



# **FORECAST 2050**

**AUGUST PUBLIC MEETING**

# 2019 SMALL AREA ESTIMATES BASE DATA

- NCTCOG's **Small Area Estimates Program** develops sub-county estimates of households, population, and employment.
- Estimates for 2019 were developed to add to a time series including 2000, 2005, 2010, and 2015.
- Small Area Estimates Program uses data from federal sources along with:
  - Other NCTCOG data, such as the geospatial data layers
  - NCTCOG's Annual Estimates Program (population and housing estimates)
  - Aerial imagery (orthophotos) available through NCTCOG's Spatial Data Cooperative Program

# 2019 SMALL AREA ESTIMATES

## DATA SOURCES USED FOR ALLOCATION

Employment	Households & Population
US Census LEHD Origin-Destination Employment Statistics	Decennial US Census Data
NCTCOG Major Employers	US Census Bureau Annual Estimates
NCTCOG Land Use	NCTCOG Annual Estimates
NCTCOG Features and Developments	NCTCOG Land Use
Parcel Data from Local Appraisal Districts	NCTCOG Features and Developments
SDCP Aerial Imagery	Parcel Data from Local Appraisal Districts
Nighttime Lights	NCTCOG Subdivisions
	SDCP Aerial Imagery

# FORECAST 2050

## REGIONAL CONTROL TOTALS

	2019	2050 Control Total	2019 – 2050 Change	2019 – 2050 % Change
<b>Population</b>	7,515,038	12,429,673	4,914,635	65.4%
<b>Employment</b>	5,213,776	8,698,026	3,484,250	66.8%
<b>2050 Population/Employment Ratio</b>			1.43	

Source: US Census Bureau, Bureau of Economic Analysis, The Perryman Group, NCTCOG

# FORECAST 2050

## COUNTY TARGETS – POPULATION

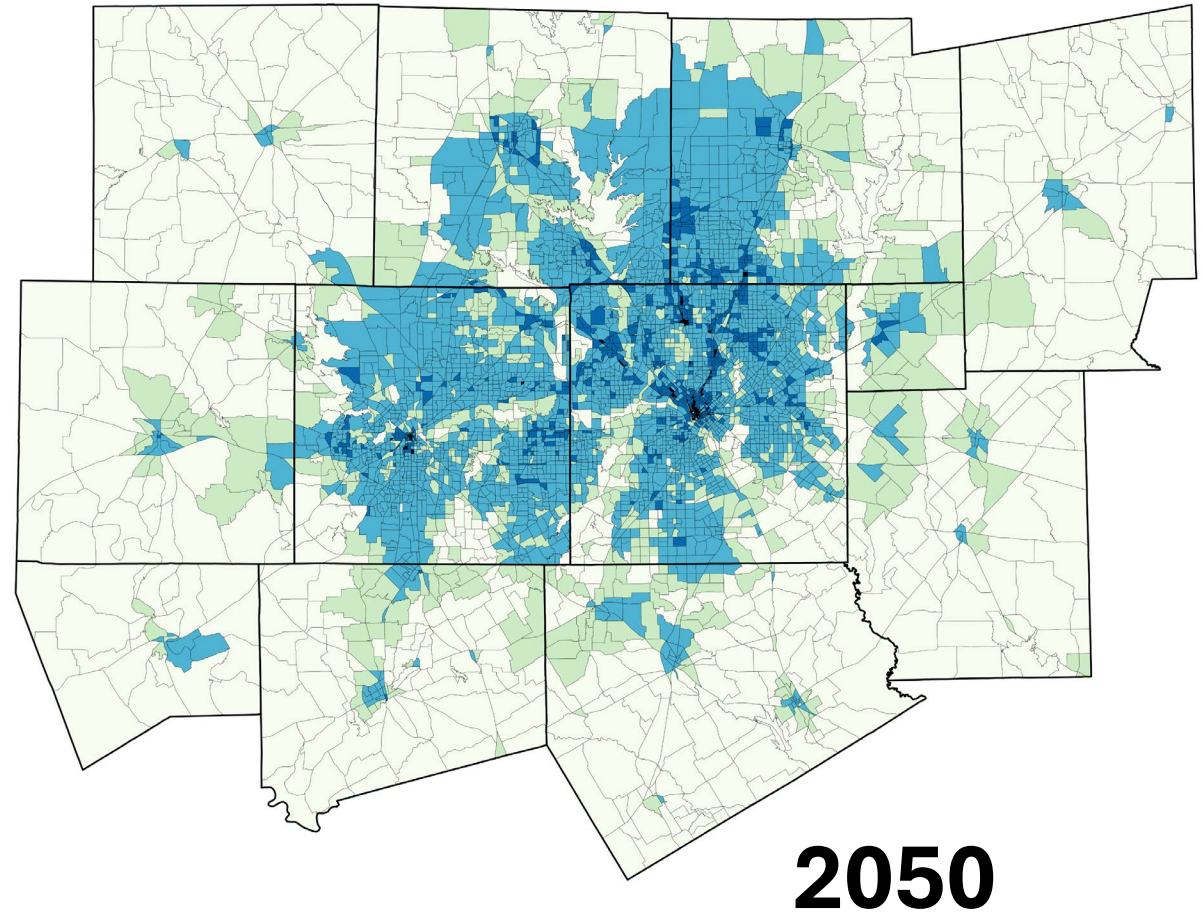
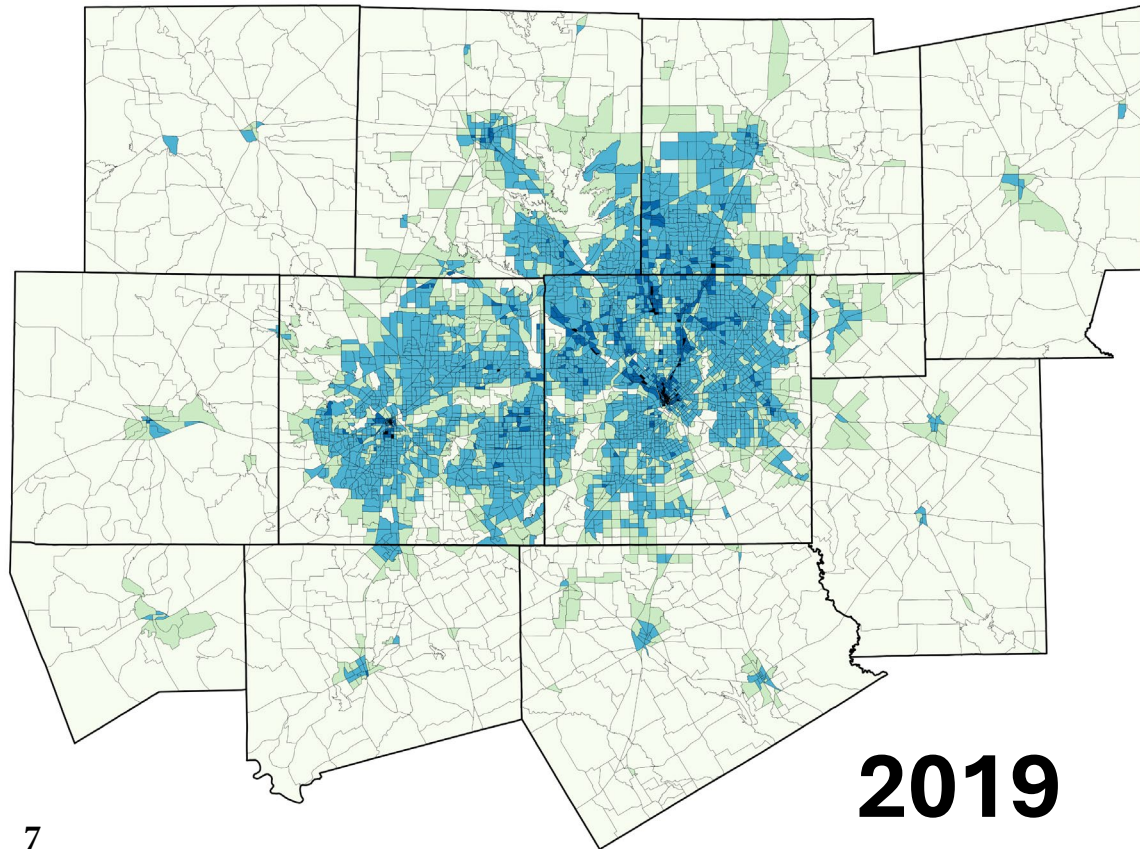
County	2019	2035	2050	2019 – 2050 Change	2019 – 2050 Percent Change	2019 – 2050 Compound Annual Growth Rate
Collin	1,036,595	1,613,969	2,158,340	1,121,745	108.2%	2.4%
Dallas	2,563,285	2,835,539	3,094,330	531,045	20.7%	0.6%
Denton	879,286	1,390,052	1,872,385	993,099	112.9%	2.5%
Ellis	187,453	324,747	452,132	264,679	141.2%	2.9%
Hood	59,934	112,725	162,845	102,911	171.7%	3.3%
Hunt	96,015	152,527	205,848	109,833	114.4%	2.5%
Johnson	174,456	275,089	368,962	194,506	111.5%	2.4%
Kaufman	140,490	234,441	321,673	181,183	129.0%	2.7%
Parker	144,367	263,189	374,523	230,156	159.4%	3.1%
Rockwall	104,942	177,129	245,395	140,453	133.8%	2.8%
Tarrant	2,061,041	2,484,544	2,877,012	815,972	39.6%	1.1%
Wise	67,174	120,815	171,552	104,378	155.4%	3.1%
<b>MPA</b>	<b>7,515,038</b>	<b>9,984,765</b>	<b>12,304,997</b>	<b>4,789,959</b>	<b>63.7%</b>	<b>1.6%</b>

# FORECAST 2050

## COUNTY TARGETS – EMPLOYMENT

County	2019	2035	2050	2019 – 2050 Change	2019 – 2050 Percent Change	2019 – 2050 Compound Annual Growth Rate
Collin	661,917	968,540	1,256,073	594,155	89.8%	2.1%
Dallas	2,341,703	2,806,213	3,241,610	899,907	38.4%	1.1%
Denton	426,842	709,055	972,523	545,681	127.8%	2.7%
Ellis	86,847	141,142	190,122	103,275	118.9%	2.6%
Hood	30,736	51,156	70,391	39,655	129.0%	2.7%
Hunt	46,302	70,471	93,498	47,196	101.9%	2.3%
Johnson	79,358	123,112	163,066	83,708	105.5%	2.4%
Kaufman	56,647	101,043	143,654	87,007	153.6%	3.0%
Parker	69,500	116,462	162,348	92,848	133.6%	2.8%
Rockwall	54,991	94,844	132,965	77,974	141.8%	2.9%
Tarrant	1,323,107	1,739,802	2,128,073	804,966	60.8%	1.5%
Wise	35,786	54,309	72,161	36,375	101.6%	2.3%
<b>MPA</b>	<b>5,213,736</b>	<b>6,976,148</b>	<b>8,626,482</b>	<b>3,412,747</b>	<b>65.5%</b>	<b>1.6%</b>

# Forecast 2050 Total Activity

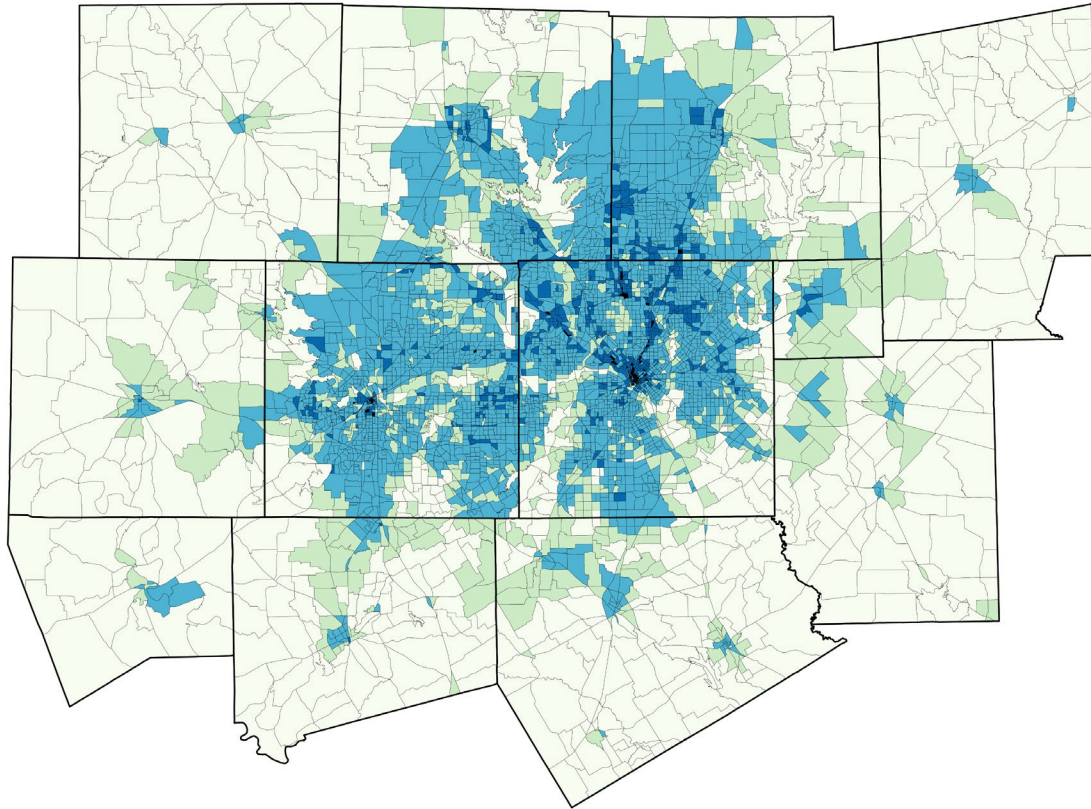


Total Activity Per Square Mile

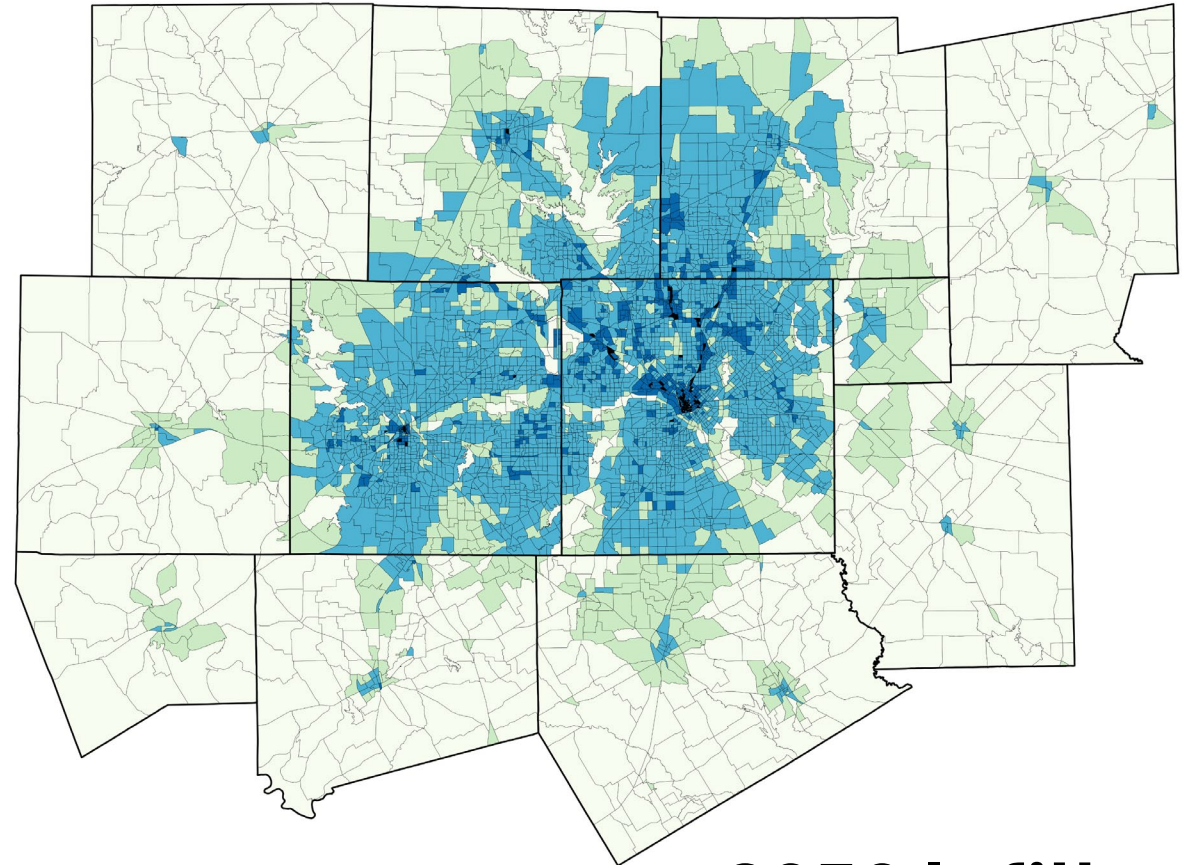
- 0 - 1,152 (1079)
- 1,152 - 4,116 (939)
- 4,116 - 19,244 (2692)
- 19,244 - 76,000 (422)
- 76,000 - 4,121,428 (120)

**Preliminary**

# Forecast 2050 Total Activity

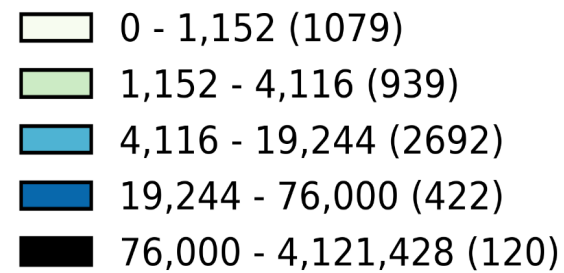


**2050 Baseline**



**2050 Infill**

Total Activity Per Square Mile



**Preliminary**



# FORECAST 2050

## LOCAL REVIEW

- While the best available data were used, there are likely to be imperfections in the base-period data.
- Statistical modeling is inherently subject to various types of error.
- Local review provides additional information that NCTCOG staff can use to refine the forecasts.
- Focus of local review:
  - Correctable errors in the base data
  - Activity that has either occurred or is certain to occur, but was not captured by the models

# FORECAST 2050 LOCAL REVIEW

- Review covers
  - Households, population, and employment
  - 2019 (base data) and 2035, 2050 (model output)
- Submitted information must be specific, detailed, and verifiable.
- NCTCOG staff will review all submissions and reconcile any conflicting inputs.
- Final data will reflect results of local review.

**Participation is strongly encouraged and much appreciated!**

# STAFF CONTACTS

**Dan Kessler**  
Assistant Director  
Transportation  
[dkessler@nctcog.org](mailto:dkessler@nctcog.org)

**Gopindra Nair**  
Senior Transportation System Modeler  
Transportation  
[gnair@nctcog.org](mailto:gnair@nctcog.org)

**Sarah Jackson**  
Geographic Information Analyst  
Research & Information Services  
[sjackson@nctcog.org](mailto:sjackson@nctcog.org)

**Donna Coggeshall**  
Research Manager  
Research & Information Services  
[dcoggeshall@nctcog.org](mailto:dcoggeshall@nctcog.org)

**Hua Yang**  
Principal Transportation System Modeler  
Transportation  
[hyang@nctcog.org](mailto:hyang@nctcog.org)

**Dhaval Jariwala**  
Transportation GIS Data Solutions  
Analyst I  
Transportation  
[djariwala@nctcog.org](mailto:djariwala@nctcog.org)

**Mark Folden**  
Senior Predictive Analytics Specialist  
Research & Information Services  
[mfolden@nctcog.org](mailto:mfolden@nctcog.org)

**Kathy Yu**  
Principal Transportation System Modeler  
Transportation  
[kyu@nctcog.org](mailto:kyu@nctcog.org)

