

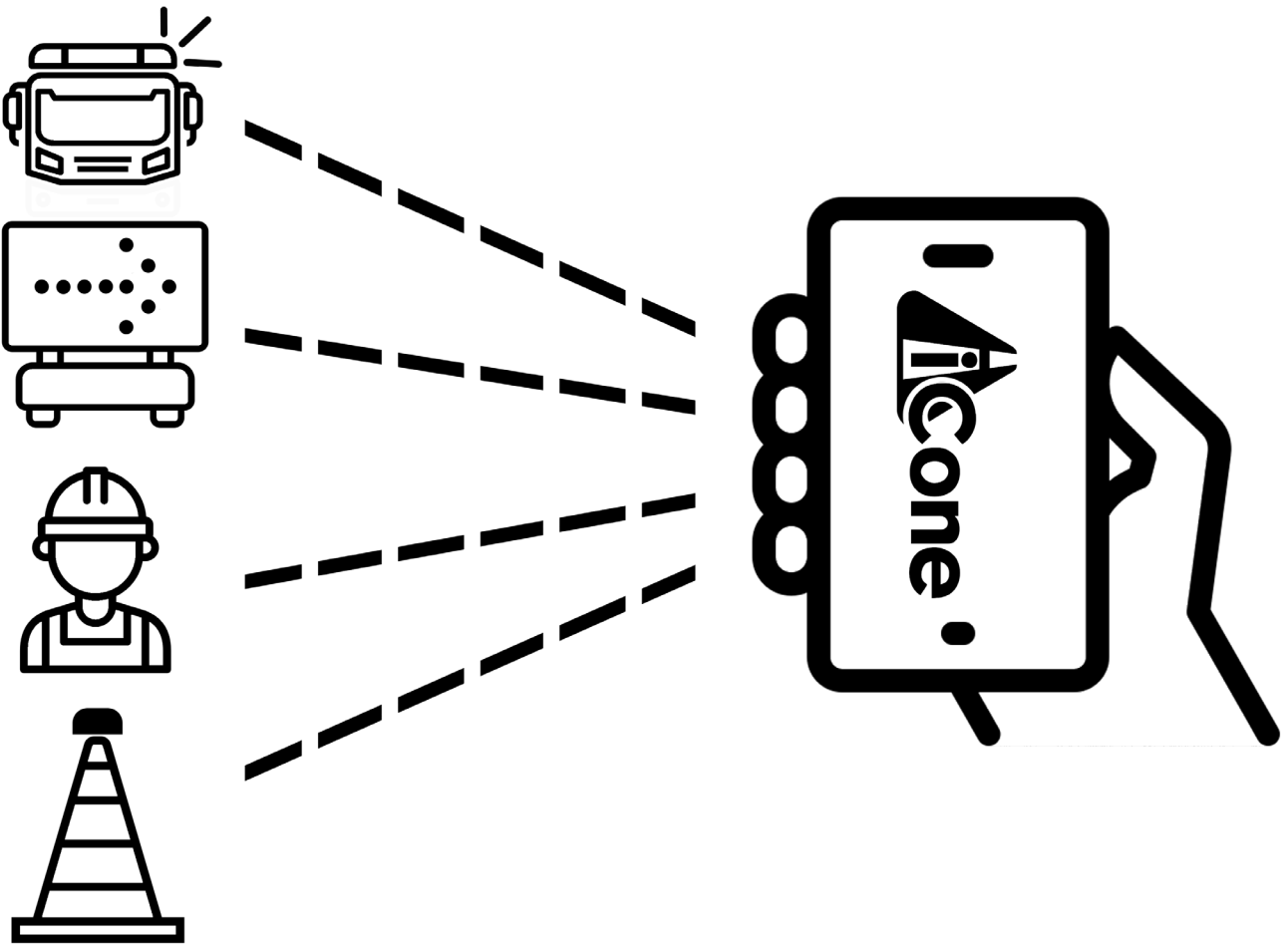


# Getting Data From the Work Zone Connecting Construction/Maintenance

Ross D Sheckler

iCone Products LLC

2024

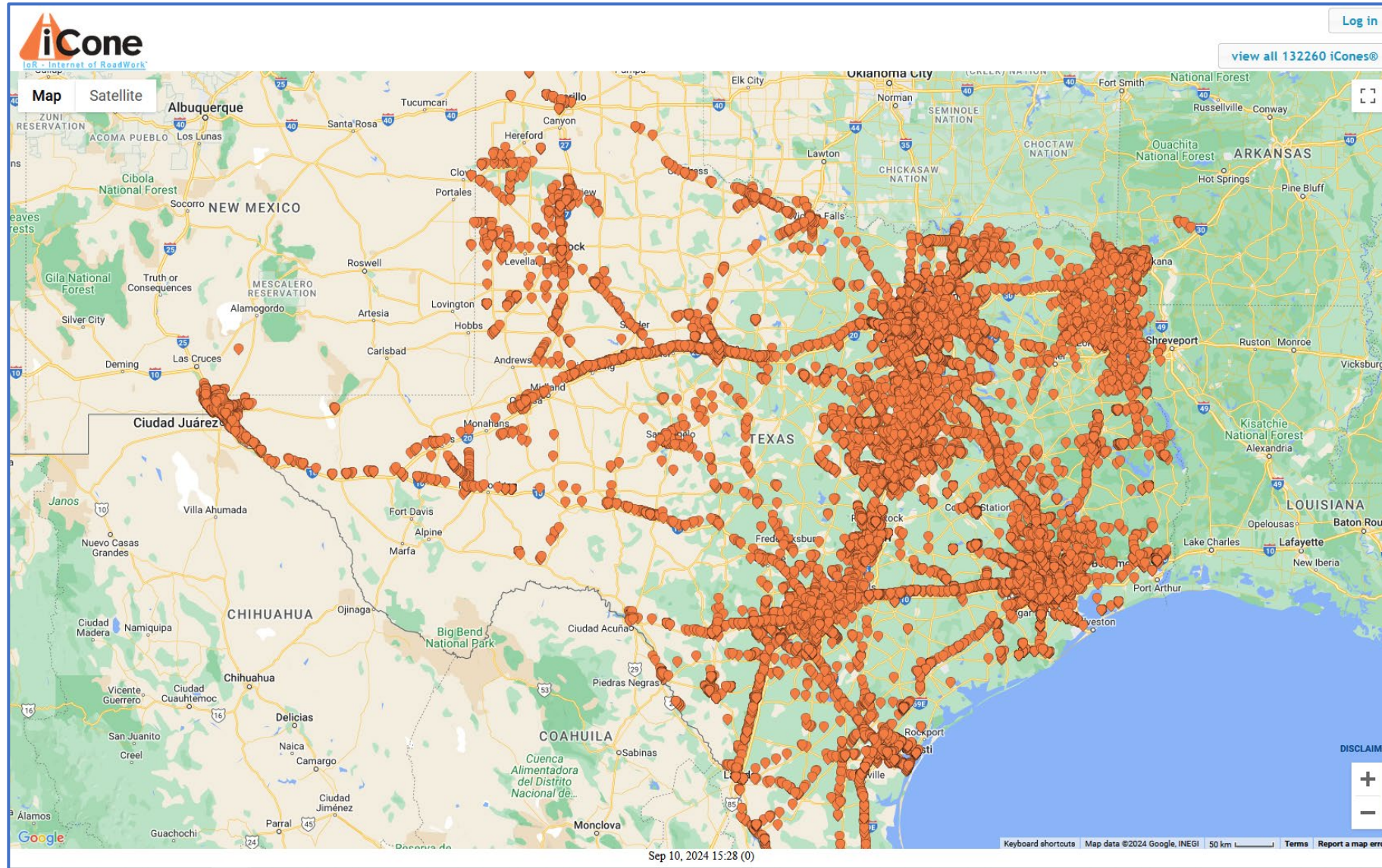


# Field Data informs – Planning Data – which supplies Drivers





# Harvesting data from emerging technologies



FLEETWATCHER

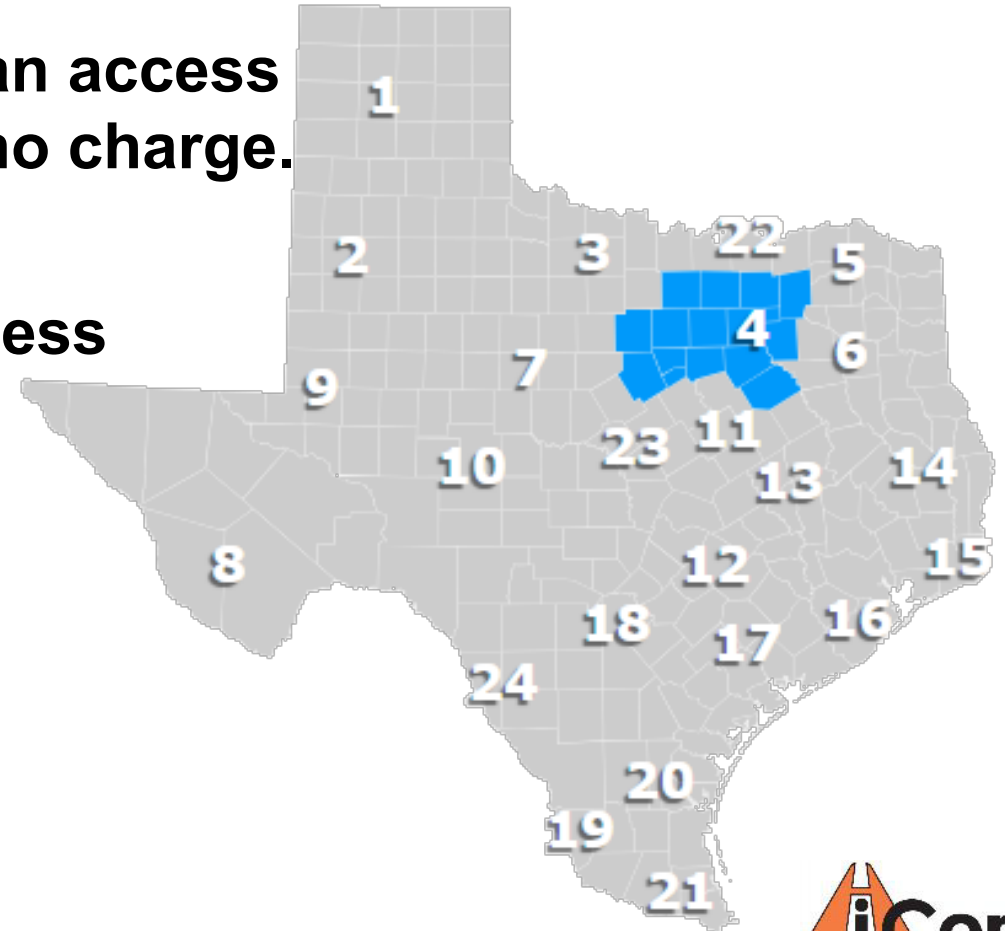


# Master/Associate Contracting Model

**Master Agency contracts for data for a region.**

[choice of 1, 10, or 60 minute intervals]

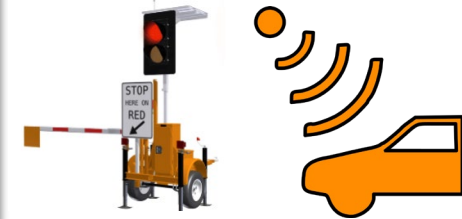
- **Associate Agencies within the region can access the data through the Master Agency at no charge.**
- **Associate Agencies can have direct access accounts for a small charge.**





# Connected Devices

- **Arrow Boards** – Trailer arrow boards, TMA trucks, service trucks
  - Lane closures and shifts
- **Flashing Beacons** – Light bars on trucks, ‘Workers Present When Flashing’
  - Workers (work trucks) present
- **Portable Signals and AFAD**
  - Unmapped STOP
- **Cone Markers**
  - First cone, last cone, etc.
- **Phone apps**
  - Workers on-site
- **Striping activities**
- **Paving activities**
- **Trucks entering/exiting**

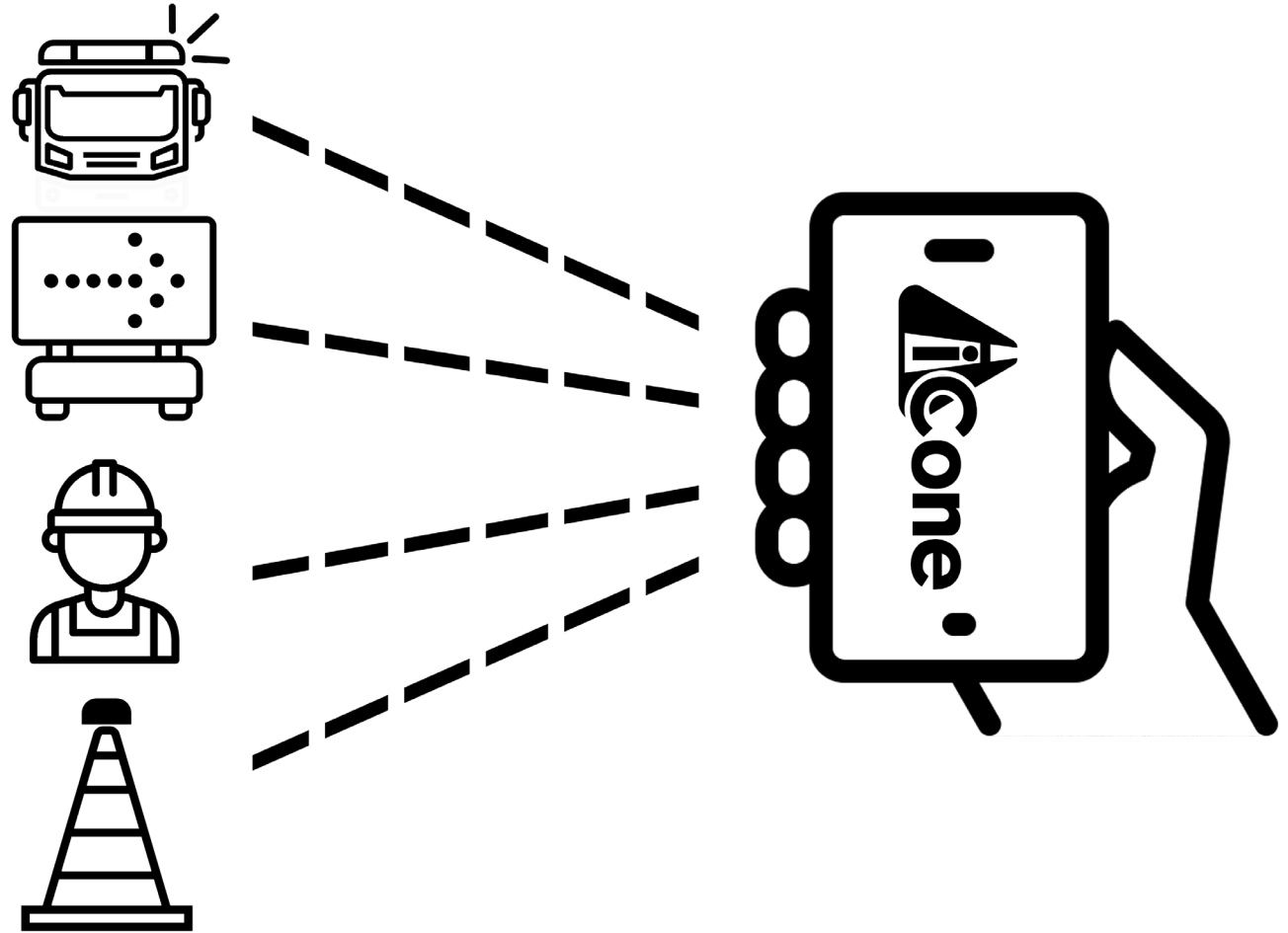


# Equipment Grant Program

**“Budgets are tight. We can’t buy anything new.”**

**Trial equipment for associate agencies when a region contracts for iCone data.**

**A simple email request process with monthly allocations that can be revisited after successful implementation of the previous grant.**



# The Flow of Work Zone Data

