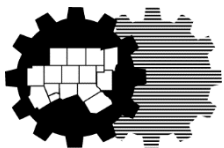


Freight North Texas 2022

A Freight Mobility Plan

Regional Freight Advisory Committee
November 08, 2022



Mike Johnson, Principal Transportation Planner
NCTCOG Transportation Department



BACKGROUND

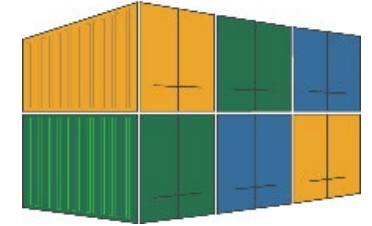
Freight North Texas: The North Central Texas Regional Freight System Inventory

- Completed in 2013
- An inventory of the freight system in North Central Texas
- Included the recommendation for several follow-up studies
- These studies included:
 - Freight Congestion and Delay
 - Truck Parking Study
 - Freight Land Use Analysis
 - Environmental Justice Report
 - Economic Impact of Freight on the Region/Freight Project Evaluation System
- These studies have all been completed



FREIGHT NORTH TEXAS 2022

FREIGHT
NORTH TEXAS



Plan Structure:

The plan has three main sections:

- **Freight in North Texas:** This section outlines the current status of freight at the regional, state, and national level.
- **Freight Planning in North Texas:** This section discusses analysis done by NCTCOG in dealing with different freight related transportation issues throughout the region.
- **Recommendations for North Texas:** This section discusses the results of the data collection and analysis done within the Freight North Texas Program in the form of recommendations for policies, programs, and projects.

Background

Freight North Texas

Freight In North Texas

Freight Planning In North
Texas

Recommendations For
North Texas

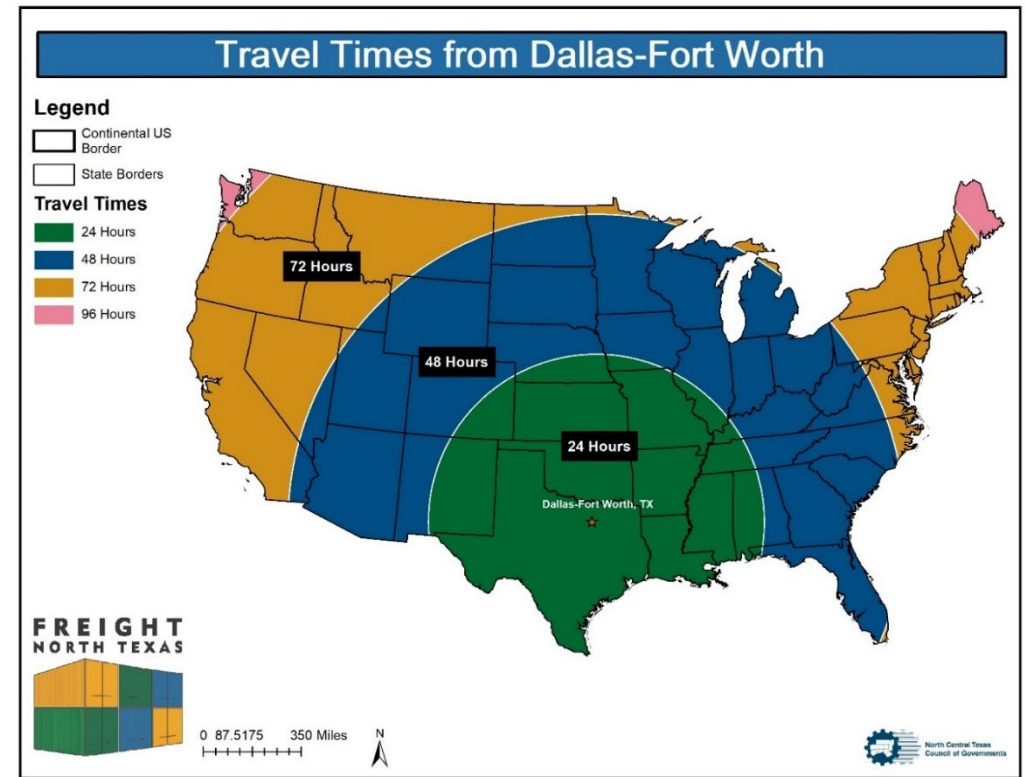
Q&D

FREIGHT IN NORTH TEXAS

This section identifies the different elements of the freight system as they are currently aligned in the region.

Importance of Freight to the Region

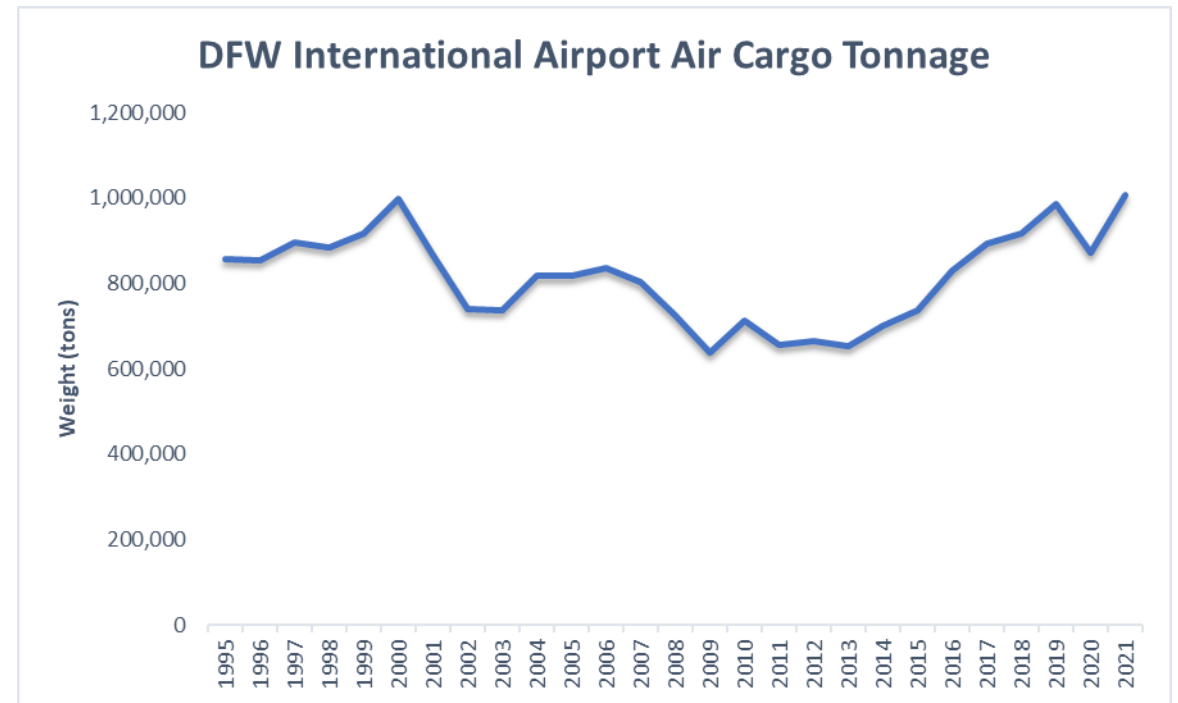
- The economic impact of freight
- Regional freight assets
- Freight's role in regional growth



FREIGHT IN NORTH TEXAS

North Texas Freight Components

- Truck
- Rail
- Pipeline
- Air Cargo
- Intermodal Transportation
- Inland Ports and Freight-Oriented Developments



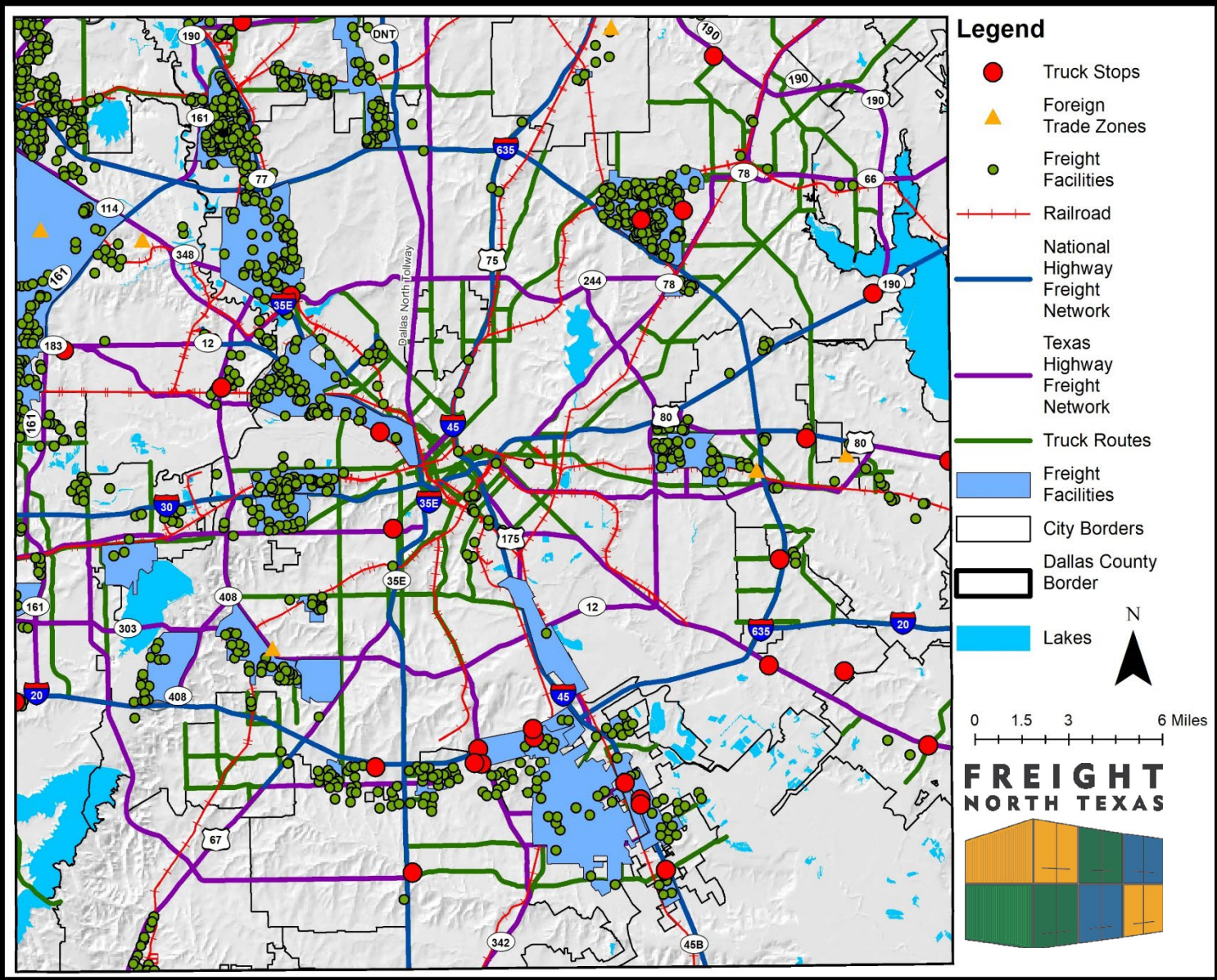
FREIGHT IN NORTH TEXAS

County Freight Scans

Looking at freight activity at the county level, including:

- Freight-Oriented Developments
- Truck Stops
- Truck Routes
- Freight Facilities
- Regional Intermodal Hubs
- Major Employers

Dallas County – Freight Scan



Dallas County has the strategic advantage of having direct access to major freight corridors serving the nation’s largest cities and ports via four Interstate Highways and freight railroads. Several industries located within the county rely directly on the efficiencies of the county’s freight system.

Freight Facts

Major Freight Employers:

- PepsiCo
- Texas Instruments
- UPS
- Parkland Hospital

Freight Employment:
376,950 total jobs which is 10.5 percent of local area employment.

Dallas County’s Infrastructure consists of over 1,400 miles of railway, roadway, and pipeline.

FREIGHT PLANNING IN NORTH CENTRAL TEXAS

Freight Modes in North Central Texas

This section includes NCTCOG freight initiatives and policies related to freight on a national, state, and regional level. The majority of the section is devoted to discussing and analyzing the region's freight systems elements.

These System Elements and Issues Include:

- Freight and the Environment
- Freight and Equity
- Truck Parking
- Freight Congestion and Delay
- Freight and Land Use
- The Economics of Infrastructure Projects and Freight
- NT MOVES – Freight and Railroads in North Texas
- Critical Urban Freight Corridors
- Hazardous Material Routing
- Freight and Technology
- Corridor Studies
- Freight and Safety

FREIGHT PLANNING IN NORTH CENTRAL TEXAS

Freight Planning Highlight – Safety:

NCTCOG conducts a Freight Safety Campaign. The 2021 Safe Driving Campaign began in early spring and ended in the fall. The last safety campaign took place in 2021. The goal of the 2021 campaign was to reduce freight-related accidents and inform the public about safe driving practices near large commercial motor vehicles.



FREIGHT PLANNING IN NORTH CENTRAL TEXAS

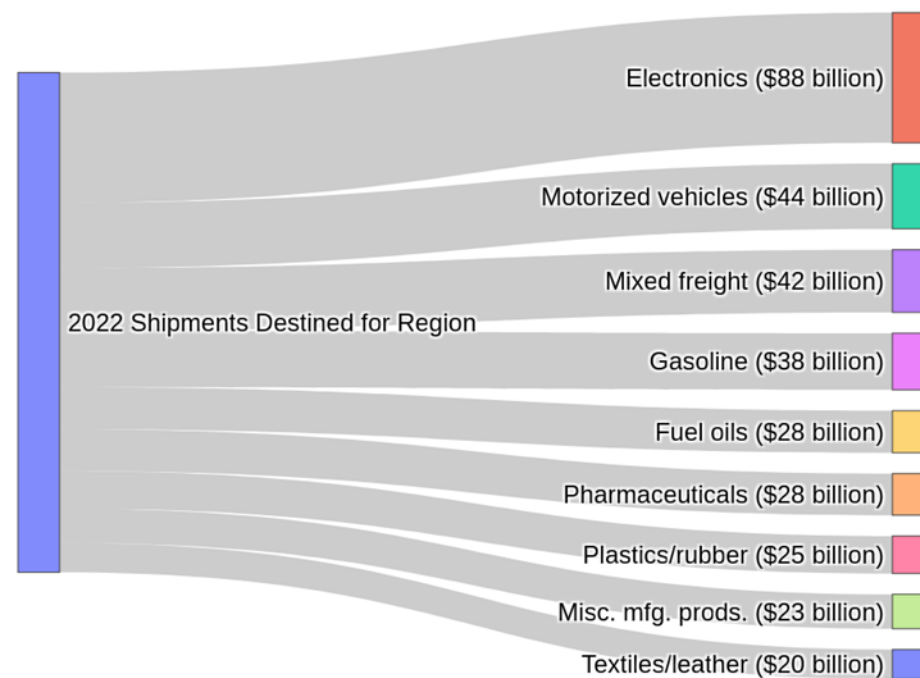
Freight Connectivity

The connectivity report discusses how the region interacts with:

- Other regions within Texas
- Surrounding states
- Mexico

This analysis is to better understand the relationship between these areas and the North Central Texas region in the context of freight.

Freight Destined for North Central Texas: Top 10 Commodities (Value)



Top 10 Commodities Total Value: \$383 billion

Commodities destined for North Central Texas: \$577 billion

RECOMMENDATIONS FOR NORTH CENTRAL TEXAS

Freight Policies

These are based on the freight policies in the **Mobility 2045 Update**

- Updating Existing Policies

Looking for opportunities to improve existing policies based on completed freight analysis

- New Policies

Potential new policies to be included in future Metropolitan Transportation Plans

Potential New Policy Example

Improve truck parking throughout the region and identify funding sources to assist with the creation of new truck parking.

RECOMMENDATIONS FOR NORTH CENTRAL TEXAS

Freight Programs

These are based on the freight programs in the **Mobility 2045 Update**

Potential new programs include:

- Freight Pilot Projects
- Freight and Land Use
- At-Grade Railroad Crossings
- Truck Parking
- Roadway Geometry



Source: NCTCOG

RECOMMENDATIONS FOR NORTH CENTRAL TEXAS

Studies and Analysis

Following is a breakdown of the studies and analysis to be done.

New Follow-Up Studies:

- Truck Bottleneck Study
- Rail Pathing Study
- Air Cargo Analysis
- Truck Routing Study
- Rail Crossing Analysis

- Commodity Flow Model
- First- and-Last Mile Improvement Study

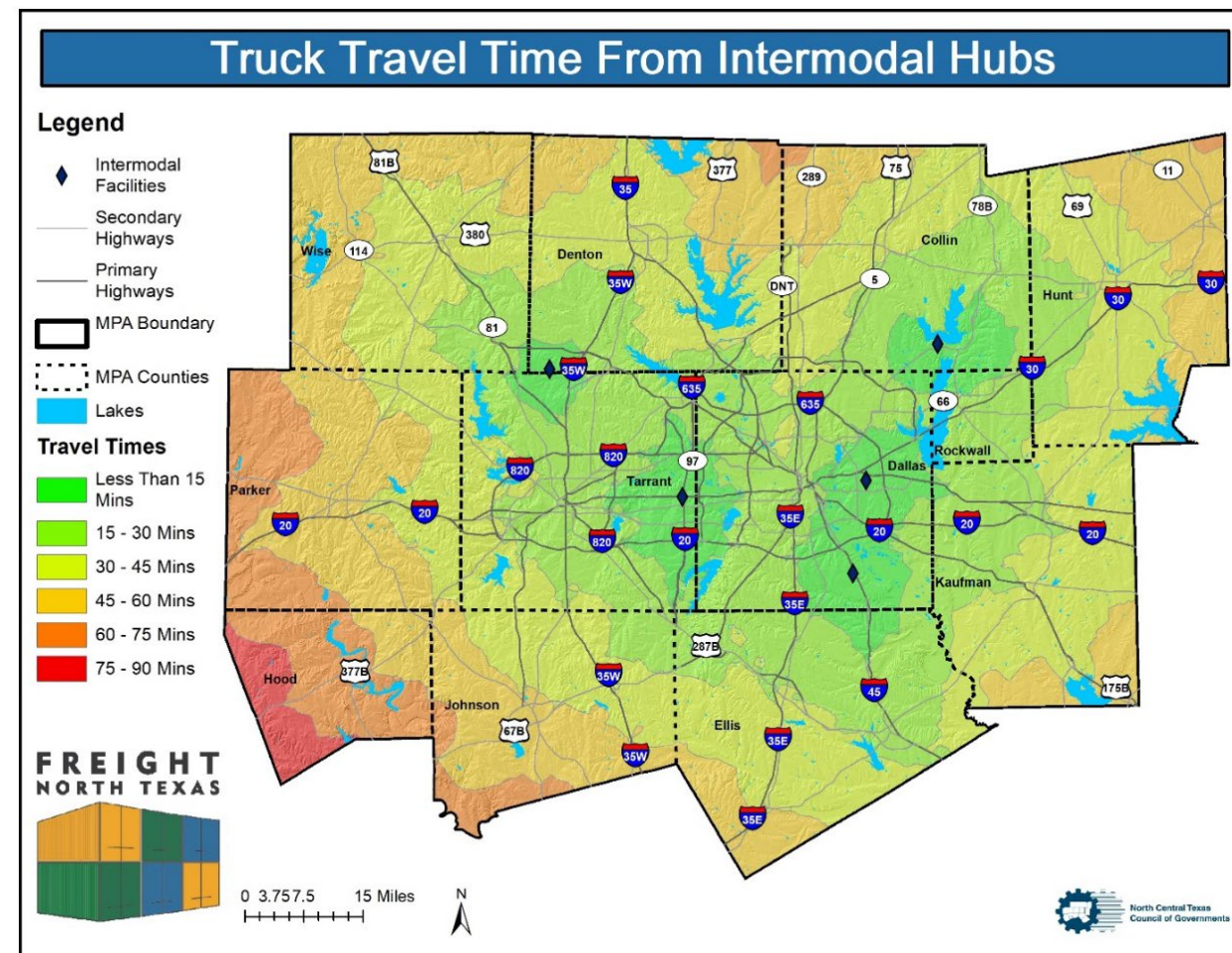
Updates to Completed Studies:

- Truck Parking Study Update
- Freight Congestion and Delay Update
- Freight Land Use Analysis Update

FREIGHT NORTH TEXAS 2022

Next Steps

- Complete Internal Review
- Complete Executive Summary and Factsheet
- Complete Webpage



QUESTIONS & DISCUSSION

Background

Freight North Texas

Freight In North Texas

Freight Planning In North
Texas

Recommendations For
North Texas

Q&D

CONTACT INFORMATION

Mike Johnson
Principal Transportation Planner
817-695-9160

MJohnson@nctcog.org

Dan Lamers, P.E.
Senior Program Manager
817-695-9263

DLamers@nctcog.org

Jeff Hathcock
Program Manager
817-608-2354

JHathcock@nctcog.org