

**DEMOGRAPHIC FORECAST**

*and*

**MOBILITY**  **2050**

*Regional Transportation Council*

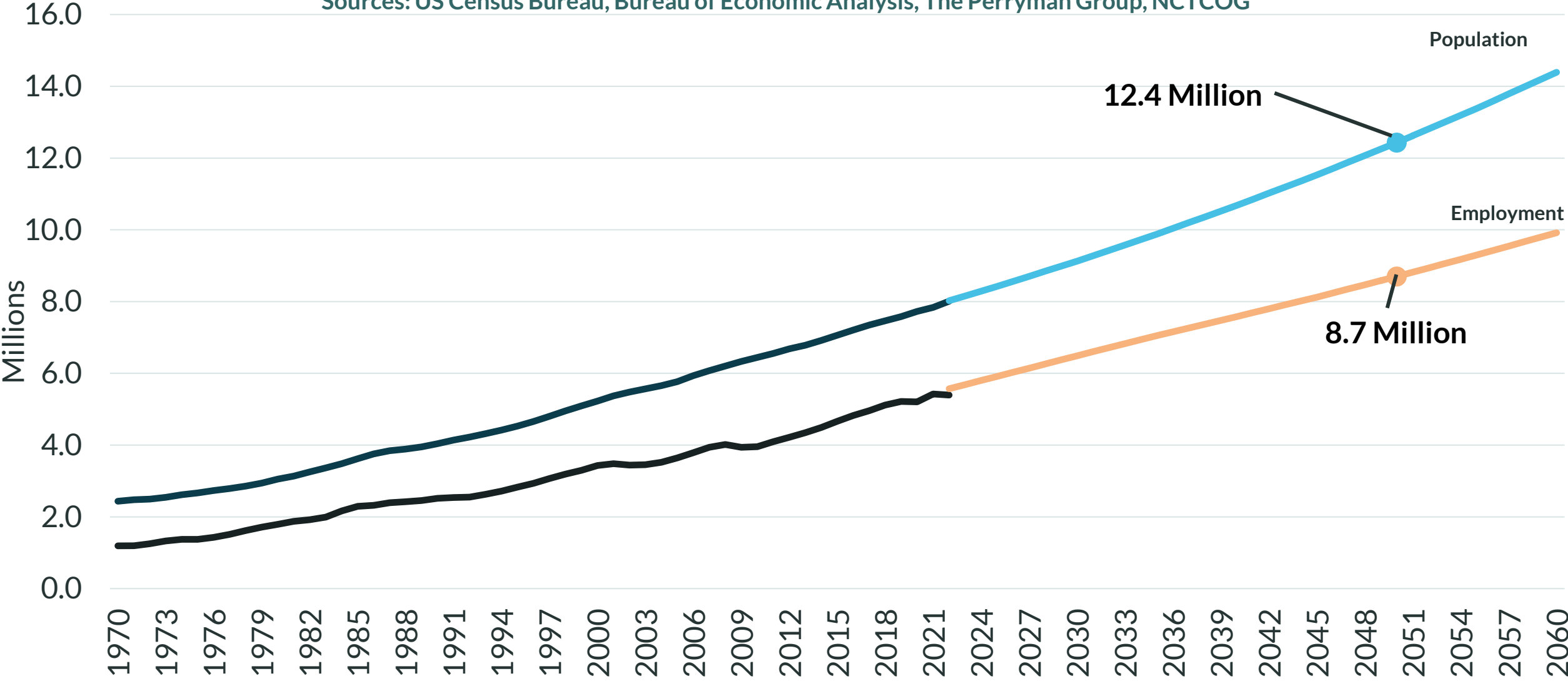
*December 12, 2024*

# Forecast Timeline



# Historical and Projected Total Population and Employment – MPA

Sources: US Census Bureau, Bureau of Economic Analysis, The Perryman Group, NCTCOG



■ CB, COG-Population    
 ■ Perryman-Population    
 ■ BEA-Employment    
 ■ Perryman-Employment

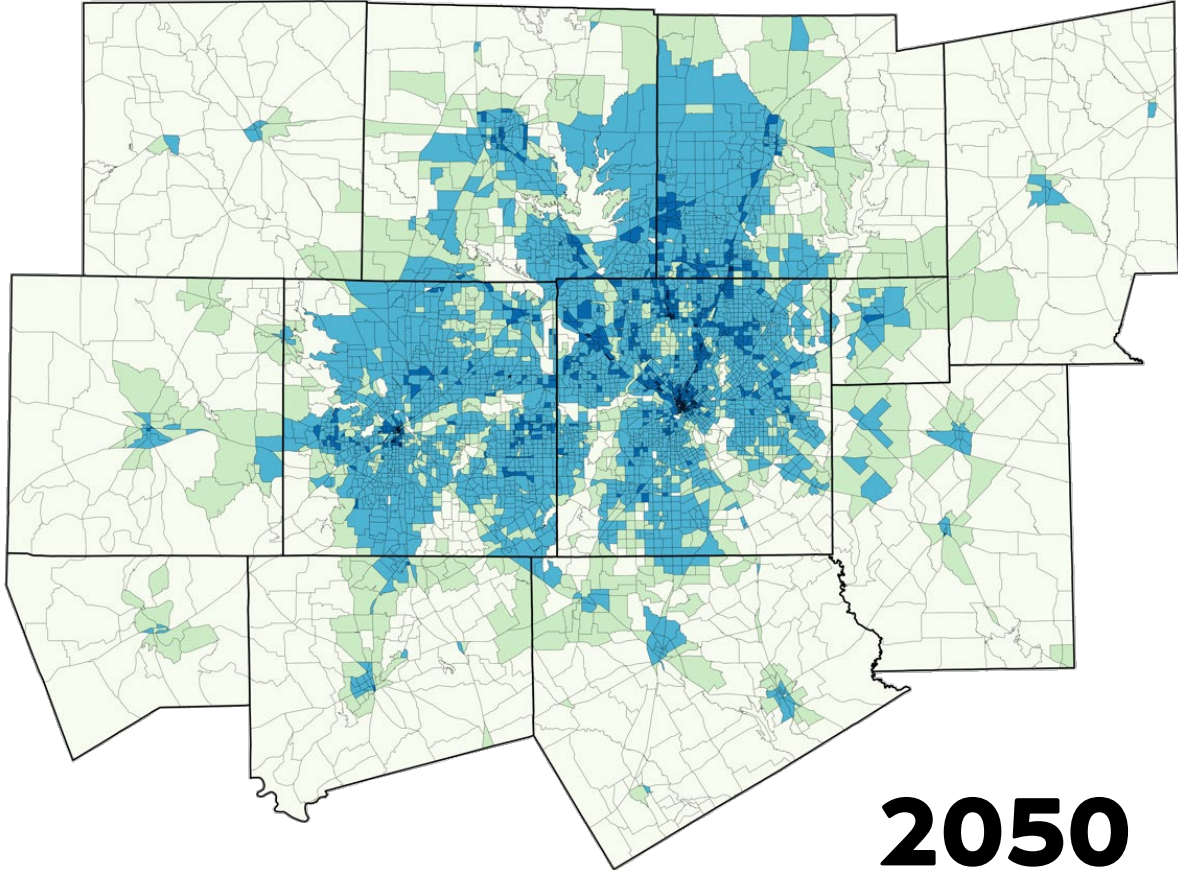
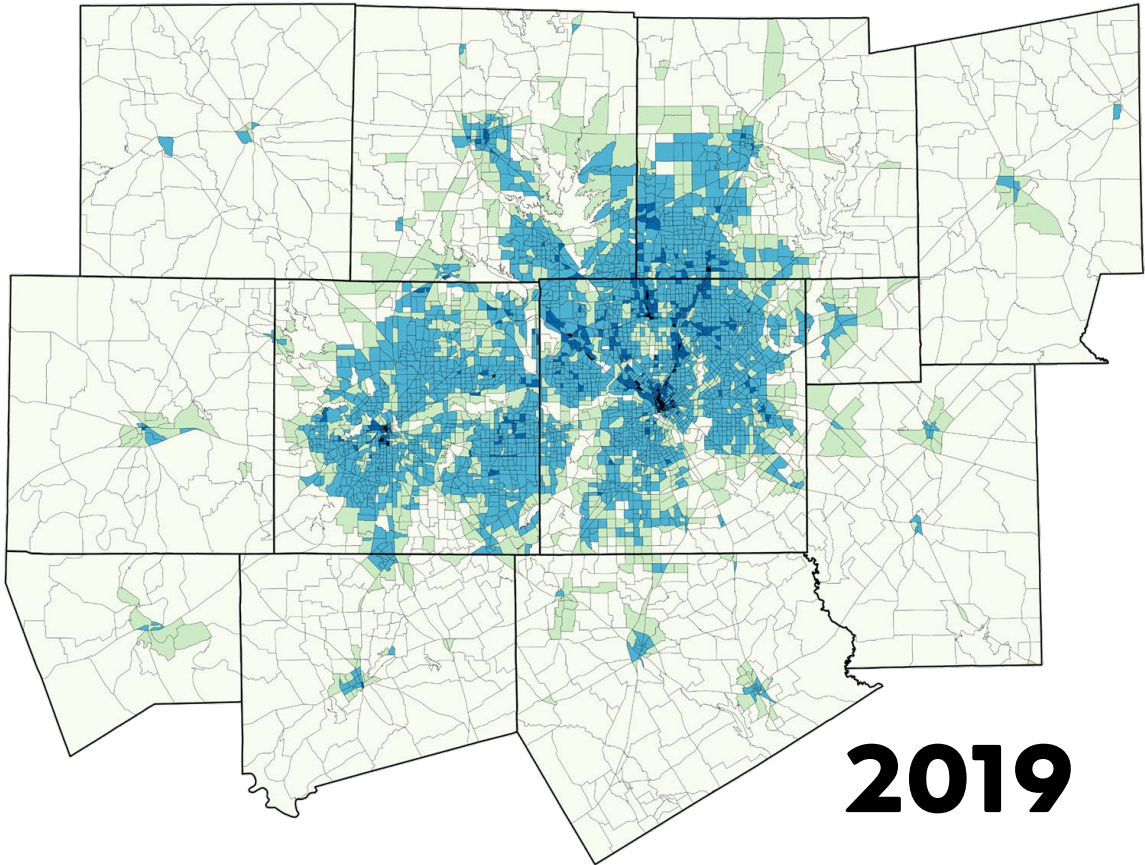
# 2050 County Forecasts – Household Population

County	2019	2035	2050	2019 – 2050 Change	2019 – 2050 Percent Change	2019 – 2050 Compound Annual Growth Rate
Collin	1,040,657	1,566,125	2,154,649	1,113,992	107.0%	2.38%
Dallas	2,565,640	2,935,741	3,070,902	505,262	19.7%	0.58%
Denton	886,945	1,382,017	1,877,835	990,890	111.7%	2.45%
Ellis	187,711	310,290	442,297	254,586	135.6%	2.80%
Hood	59,954	86,367	114,159	54,205	90.4%	2.10%
Hunt	95,977	147,964	205,990	110,013	114.6%	2.49%
Johnson	174,382	266,733	369,655	195,273	112.0%	2.45%
Kaufman	140,538	244,803	403,257	262,719	186.9%	3.46%
Parker	144,356	249,567	374,523	230,167	159.4%	3.12%
Rockwall	105,031	169,611	245,608	140,577	133.8%	2.78%
Tarrant	2,059,637	2,513,335	2,866,567	806,930	39.2%	1.07%
Wise	<u>67,176</u>	<u>115,084</u>	<u>171,714</u>	<u>104,537</u>	155.6%	3.07%
<b>MPA Total</b>	<b>7,528,004</b>	<b>9,987,637</b>	<b>12,297,156</b>	<b>4,769,152</b>	<b>63.4%</b>	<b>1.60%</b>

# 2050 County Forecasts – Employment

County	2019	2035	2050	2019 – 2050 Change	2019 – 2050 Percent Change	2019 – 2050 Compound Annual Growth Rate
Collin	662,150	964,916	1,243,330	581,180	87.8%	2.05%
Dallas	2,348,110	2,840,066	3,289,159	941,049	40.1%	1.09%
Denton	428,738	707,375	953,057	524,320	122.3%	2.61%
Ellis	86,928	142,161	206,028	119,100	137.0%	2.82%
Hood	30,733	43,127	52,007	21,275	69.2%	1.71%
Hunt	46,299	71,464	94,878	48,578	104.9%	2.34%
Johnson	79,291	123,221	166,900	87,609	110.5%	2.43%
Kaufman	56,647	108,319	189,354	132,707	234.3%	3.97%
Parker	69,499	117,475	169,621	100,122	144.1%	2.92%
Rockwall	54,837	97,275	134,769	79,931	145.8%	2.94%
Tarrant	1,319,425	1,734,172	2,120,932	801,507	60.7%	1.54%
Wise	<u>35,785</u>	<u>54,993</u>	<u>77,098</u>	<u>41,313</u>	115.5%	2.51%
<b>MPA Total</b>	<b>5,038,442</b>	<b>7,005,014</b>	<b>8,697,132</b>	<b>3,478,692</b>	<b>66.7%</b>	<b>1.66%</b>

# Forecast 2050 Total Activity



Total Activity Per Square Mile

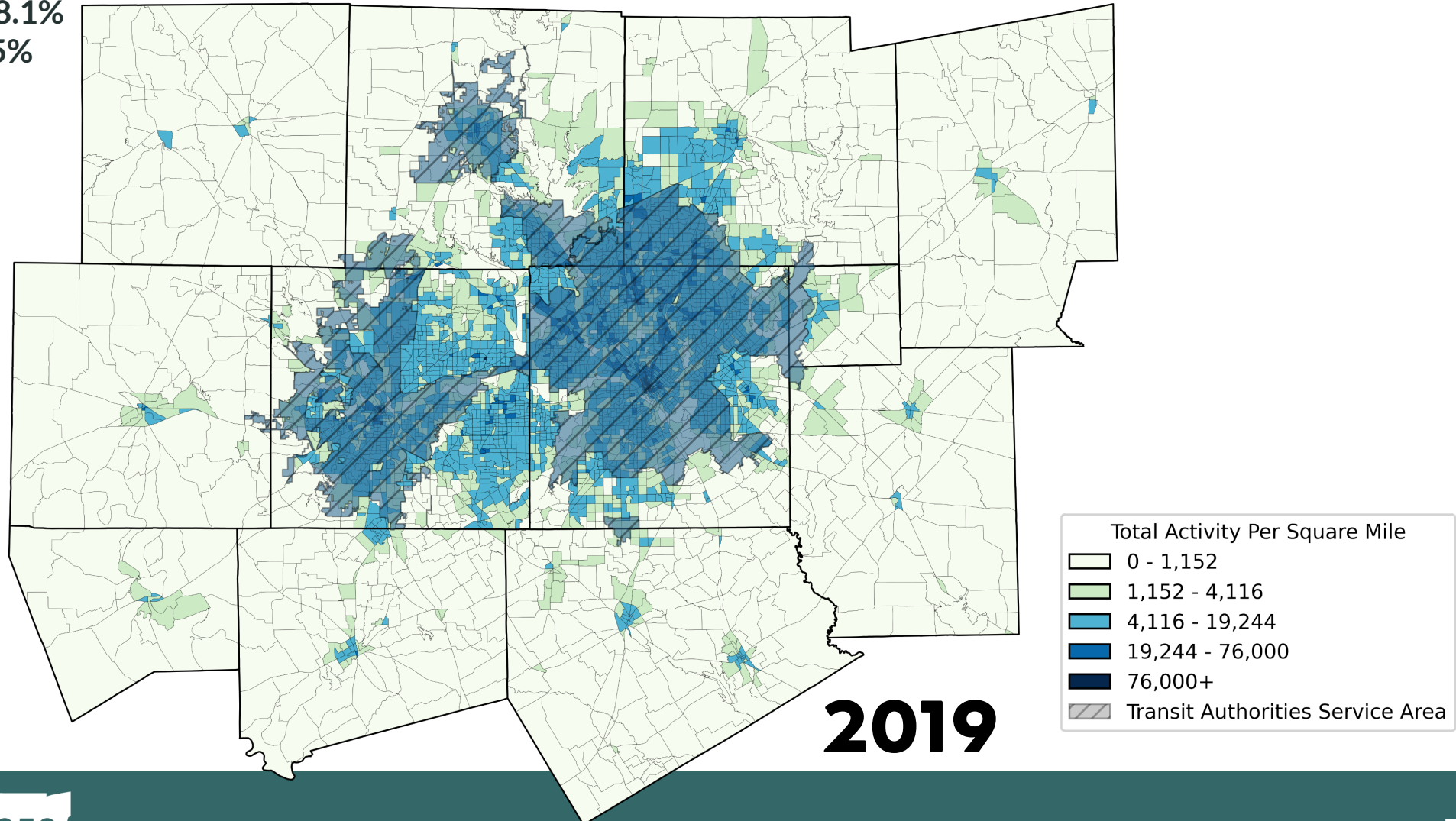
- 0 - 1,152
- 1,152 - 4,116
- 4,116 - 19,244
- 19,244 - 76,000
- 76,000+



**2019 Activity Residing  
within Transit  
Authority Service Area**

HH Population 48.1%  
Employment 63.5%

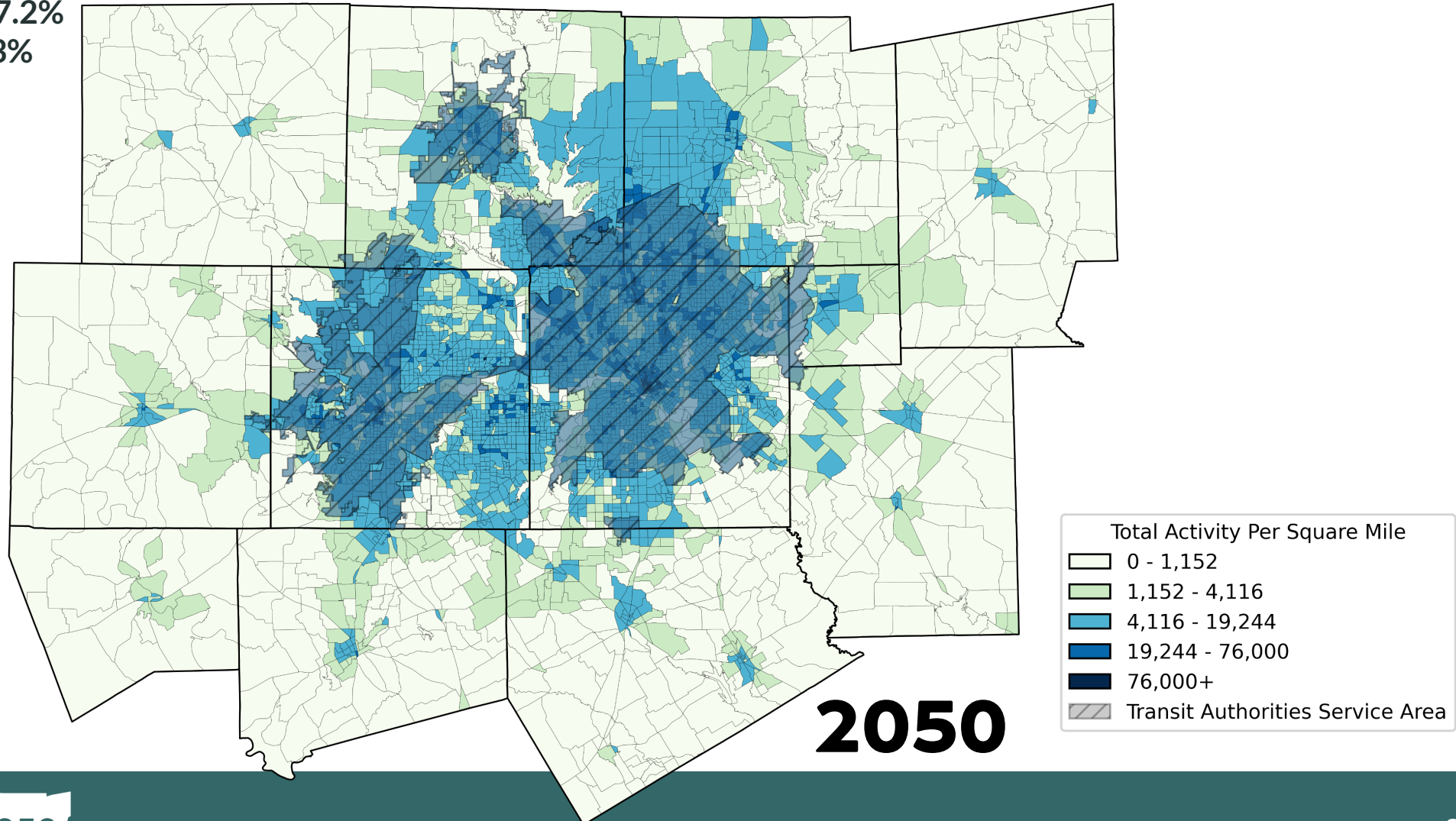
# Forecast 2050 Total Activity



**2050 Activity Residing  
within Transit  
Authority Service Area**

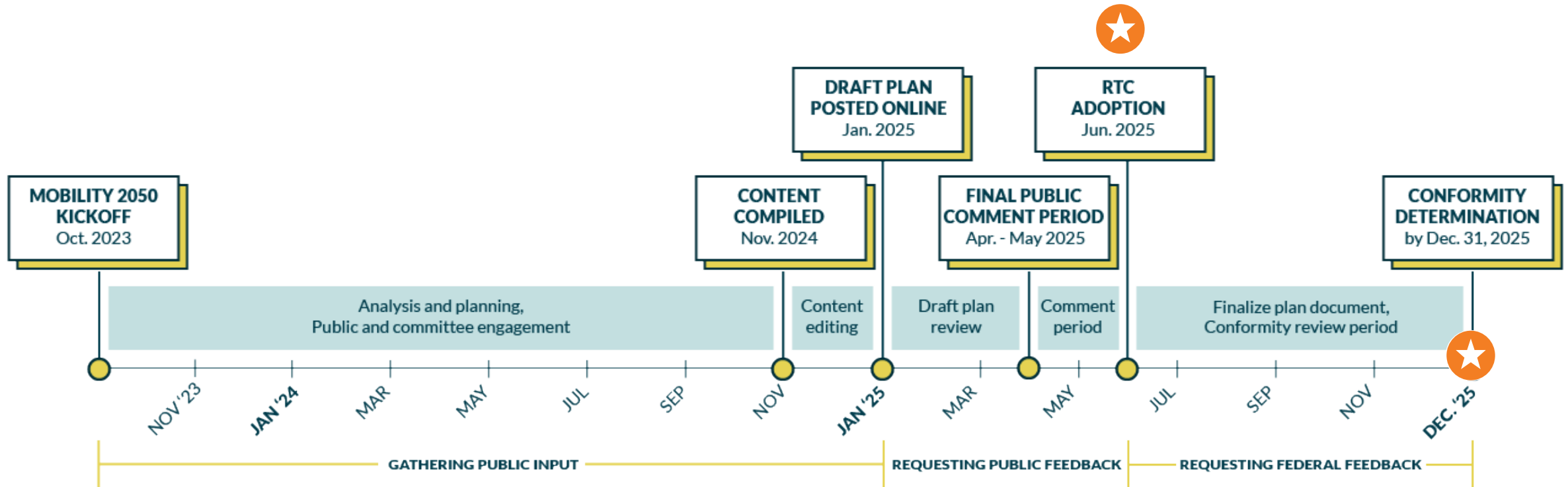
HH Population 37.2%  
Employment 55.3%

# Forecast 2050 Total Activity





# Plan Development Timeline



- Public involvement “input phase” closes at the end of 2024.
- Wrapping up technical analysis, incorporating final demographics, and developing recommendations.
- Draft plan expected in early 2025.

# Process and Requirements



- Must include all reasonably expected revenue sources, including private
- Cost must be reflected in “year of expenditure” dollars
- Cannot spend more than we reasonably expect to receive over life of plan (financial constraint rule)

While we see the **REVENUE** flowing from the BIL/IIJA, costs have risen, tempering the buying power of the funds.

DRAFT	DRAFT Mobility 2050	Can be spent on...
<b>Traditional Federal/State</b>	\$92.8 B	Roadways, strategic initiatives
<b>Local Revenue</b>	13.5	Local matching funds, roadways
<b>System/Toll</b>	8.4	Toll roads, tolled managed lanes
<b>Transit</b>	89.5	Transit capital, operating, maintenance, etc.
<b>Revenue Enhancements</b>	8.2	Above categories, as appropriate/allowed
<b>Total, Actual \$, Billions</b>	<b>\$212.4</b>	<i>2045 Update: \$148.4 Billion</i>

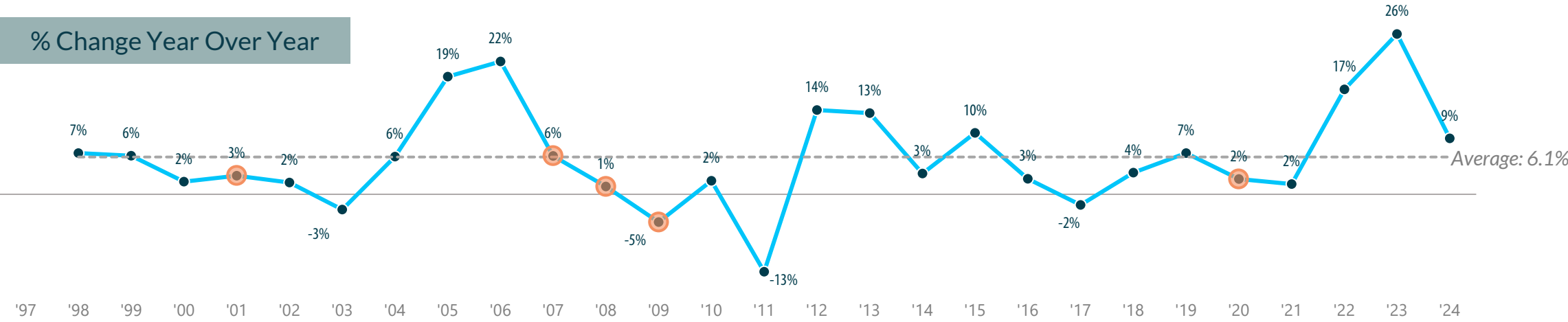
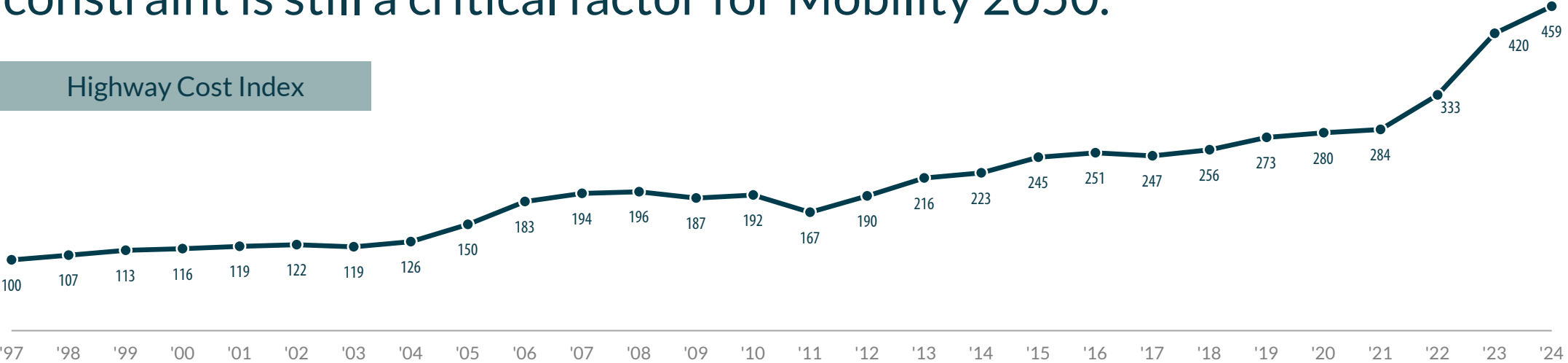
*Values may not sum due to independent rounding*

The preliminary financial plan is in progress as we compile costs and refine revenues with the latest data.

DRAFT	DRAFT Mobility 2050	Mobility 2045 Update <sup>3</sup>	Δ Draft - Previous
<b>Infrastructure Maintenance<sup>1</sup></b>	\$24.9	18.6	+6.3
<b>Management &amp; Operations</b>	23.9	29.8	-5.9
<b>Strategic Policy Initiatives<sup>2</sup></b>	6.4	5.5	+0.9
<b>Rail &amp; Bus</b>	53.9	44.9	+9.0
<b>Freeways/Tollways, Managed Lanes, and Arterials</b>	~100-103	49.7	+53.3
<b>Total, Actual \$, Billions</b>	<b>\$212 B</b>	<b>148 B</b>	<b>+64 B</b>

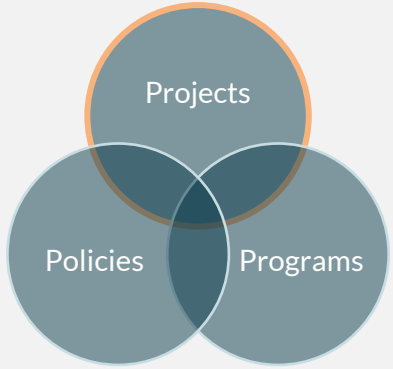
*Values may not sum due to independent rounding*

# Surging **COSTS** have started to slow in 2024, but financial constraint is still a critical factor for Mobility 2050.

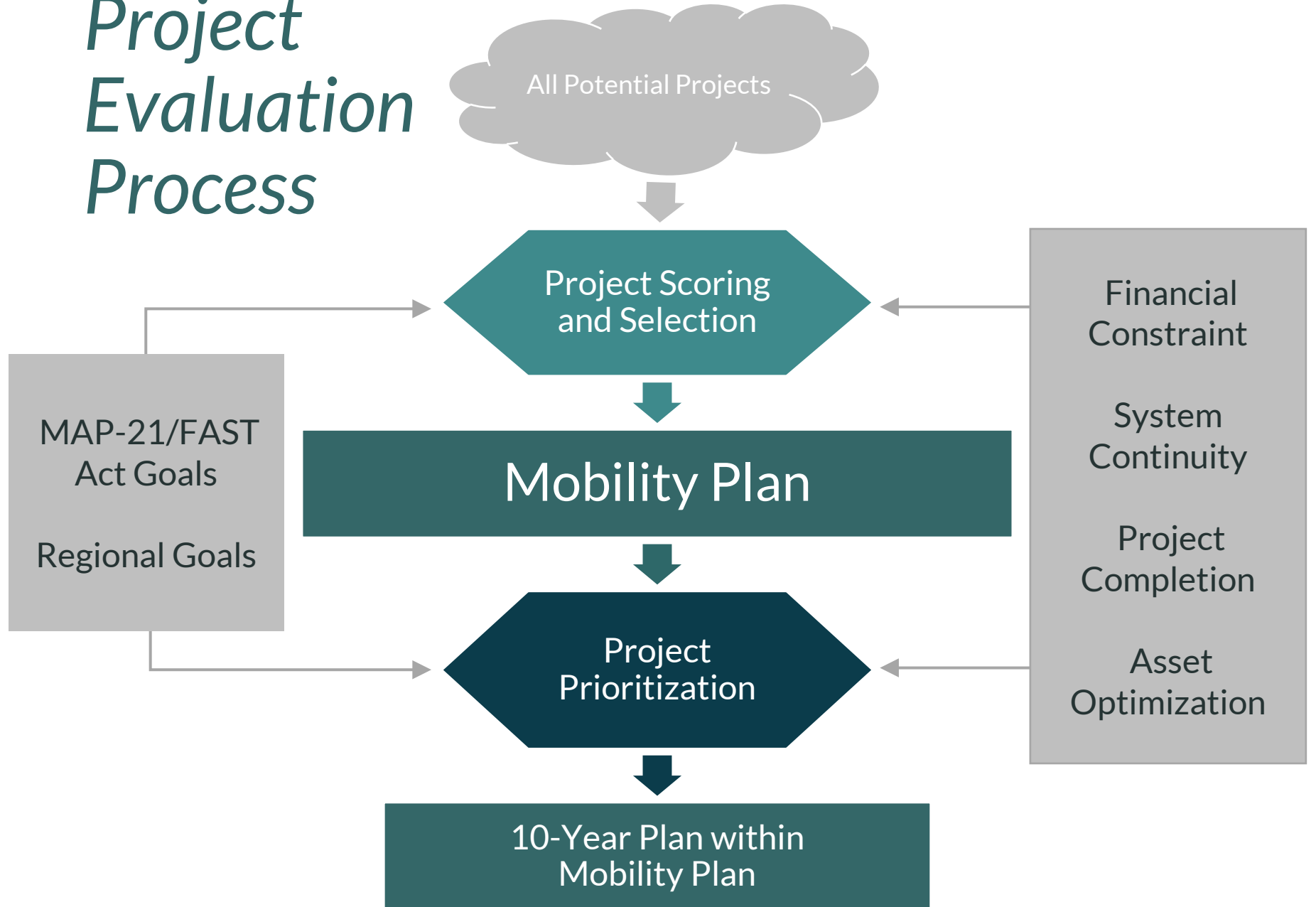




## Foundation of the Plan



# Project Evaluation Process



## MAP-21/FAST Act and Regional Goals

- Congestion Reduction
- System Reliability
- Safety
- Infrastructure Condition
- Freight Movement
- Economic Vitality
- Environmental Sustainability
- Reduced Project Delivery Delay

# Emerging Focus for Plan

- How does transportation respond to demographic growth trends?
  - Encourage infill development/density
  - Incorporate Transit 2.0 guidance for policies to support successful regional transit system
- Safety as a priority
- Funding and cost of implementing projects

# Thank you – Demographic Forecasting Collaboration

## Dan Kessler

Assistant Director  
Transportation  
[dkessler@nctcog.org](mailto:dkessler@nctcog.org)

## Sarah Jackson

Geographic Information Analyst  
Research & Information Services  
[sjackson@nctcog.org](mailto:sjackson@nctcog.org)

## Kathy Yu

Principal Transportation System  
Modeler  
Transportation  
[kyu@nctcog.org](mailto:kyu@nctcog.org)

## Donna Coggeshall

Research Manager  
Research & Information Services  
[dcoggeshall@nctcog.org](mailto:dcoggeshall@nctcog.org)

## Hua Yang

Principal Transportation System Modeler  
Transportation  
[hyang@nctcog.org](mailto:hyang@nctcog.org)

## Dhaval Jariwala

Transportation GIS Data Solutions  
Analyst I  
Transportation  
[djariwala@nctcog.org](mailto:djariwala@nctcog.org)

## Mark Folden

Senior Predictive Analytics Specialist  
Research & Information Services  
[mfolden@nctcog.org](mailto:mfolden@nctcog.org)



# Mobility Plan Contacts



Amy Johnson

Principal Transportation Planner

[ajohnson@nctcog.org](mailto:ajohnson@nctcog.org) | 817-704-5608



Brendon Wheeler, P.E., CFM

Program Manager

[bwheeler@nctcog.org](mailto:bwheeler@nctcog.org) | 682-433-0478



Dan Lamers, P.E.

Senior Program Manager

[dlamers@nctcog.org](mailto:dlamers@nctcog.org) | 817-695-9263