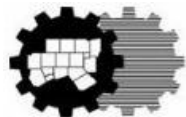


PROPOSED NATIONAL JUNETEENTH MUSEUM PARTNERSHIP

Public Involvement

June 2023



North Central Texas
Council of Governments
Transportation Department

BACKGROUND

- National Juneteenth Museum proposed to be located in Fort Worth on Rosedale Street east of IH 35W
- The community has requested regional funding for associated infrastructure:
 - Roadway
 - Sustainable Development/Parking/Land Use
 - Transit
 - Technology
 - Optimal Use of Green Space (i.e., public park)
- Supports City of Fort Worth investments/neighborhood revitalization projects (e.g., Evans and Rosedale Redevelopment project) in the same area



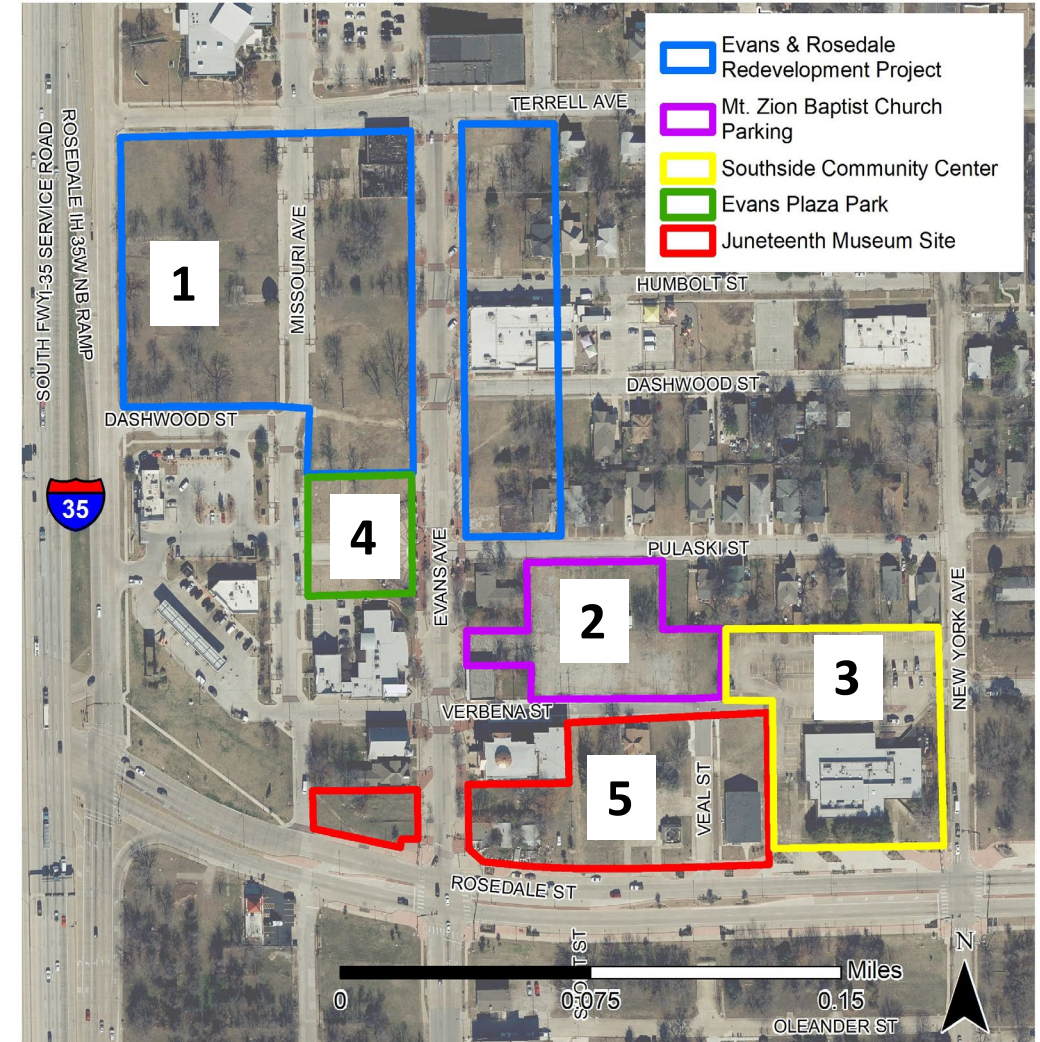
Source: National Juneteenth Museum

METHODOLOGY

- Reviewed construction elements related to transportation items for transit access, vehicular circulation, and landscaping/streetscaping
- Financial participation would involve traditional funding grants with the City of Fort Worth and/or Trinity Metro administering the funding

DEVELOPMENT CONTEXT

- City of Fort Worth Evans & Rosedale Redevelopment Project (#1)
 - City providing \$9 million public partnership with ~\$70 million from private developer, Hoque Global
 - At least 370 housing units (20 percent of them affordable), retail space, and a grocery tenant
 - Parking garage and surface lots, 400+ spaces
- Mt. Zion Baptist Church Parking (#2)
 - 11 lots, estimated 127 parking spaces
- Southside Community Center (#3)
 - 102 parking spaces. City reviewing options for future of the center.
- Evans Plaza Park (#4)
 - \$1.225 million from City committed to design and construction
- National Juneteenth Museum (#5)
 - Up to \$15M approved by City (pending private funding commitment for the Museum)



PROPOSED SITE



PROPOSED IMPROVEMENTS

TYPE	IMPROVEMENT	PROPOSED RTC FUNDING
Roadway	Realignment of East Rosedale at Veal Street intersection	\$750,000 STBG ¹
Sustainable Development/ Parking/Land Use	Reconstruct and manage parking (publicly owned/leased), add brick pavers and streetscape enhancements, add lighting and improve security; project will enhance travel and tourism	\$1,250,000 RTR ²
Transit	Construct a context-sensitively designed transit portico/ station at Rosedale and Veal Street, including real-time arrival/departure information	\$500,000 STBG ¹
Technology	Deploy broadband as a travel demand management program to reduce the need for single occupant vehicle travel	\$250,000 STBG ¹
Green Space	Management of public space to create/facilitate a walkable destination	\$250,000 RTR ²
	Total	\$3,000,000

¹ STBG = Surface Transportation Block Grant ; To be matched with regional Transportation Development Credits

² RTR = Regional Toll Revenue; No match required

CONTACT/QUESTIONS?

Christie J. Gotti
Senior Program Manager
Transportation Project Programming
cgotti@nctcog.org

Karla Windsor
Senior Program Manager
Sustainable Development
kwindsor@nctcog.org

Shannon Stevenson
Senior Program Manager
Transit Management and Planning
sstevenson@nctcog.org

Connor Sadro
Transportation Planner
Transportation Technology and Innovation
csadro@nctcog.org