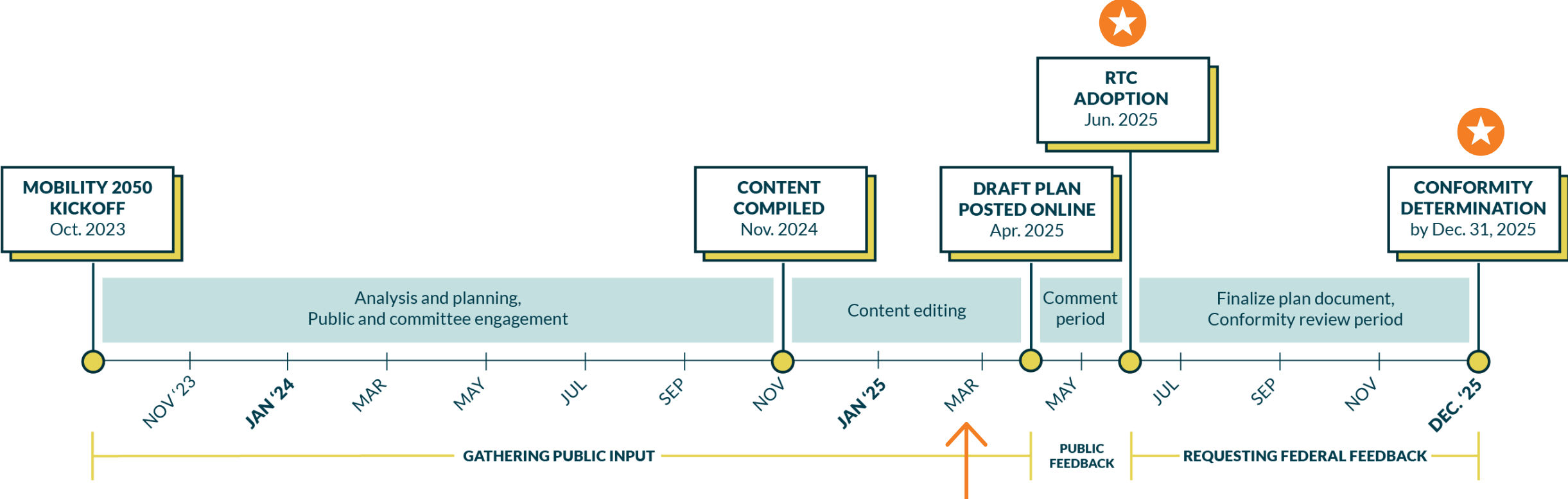


MOBILITY 2050

*Regional Transportation Council
March 13, 2025*

Plan Development Timeline



- Technical analysis complete
- Plan content being reviewed/formatted
- Public involvement analysis is being summarized

Major Mobility Plan Components

PLAN CONTENT

- PROGRAMS**
- POLICIES**
- PROJECTS**

Information

Results and Recommendations
Available for Public Review
(60 Days)

FINANCIAL PLAN

FINANCIAL CONSTRAINT

Information

Results and Recommendations
Available for Public Review
(60 Days)

NONDISCRIMINATION ANALYSIS

NO DISPARATE IMPACTS

Information

Results and Recommendations
Available for Public Review
(60 Days)

AIR QUALITY CONFORMITY

CONSISTENCY WITH FEDERAL/STATE AIR QUALITY GOALS

Information

Process in April/
Results in May
Results and Recommendations
Available for Public Review
(30 Days)

Draft Financial Plan

DRAFT	DRAFT Mobility 2050	Mobility 2045 Update ³	Δ Draft - Previous
Infrastructure Maintenance¹	\$32.9	30.7	+2.2
Management & Operations	23.9	17.9	+6.1
Strategic Policy Initiatives²	6.4	5.3	+1.1
Rail & Bus	56.0	44.9	+11.1
Freeways/Tollways, Managed Lanes, and Arterials	97.3	49.5	+47.7
Total, Actual \$, Billions	\$216.5 B	148.3 B	+68.2 B

Values may not sum due to independent rounding

¹ Infrastructure Maintenance now includes both transit and roadway. Transit operations and maintenance is assumed to be comprised of 50% maintenance.

² Strategic Policy Initiatives include programs and policy priorities for safety, technology, and equity, air quality, and sustainable development.

³ The Mobility 2045 Update comparison figures have been reorganized for comparison purposes into the Mobility 2050 categories.

Highlighted Policies

*New**

Air Quality

- Implement measures from the DFW Air Quality Improvement Plan to reduce emissions and meet NAAQS.
- Expand non-regulatory air quality monitors with local government partnerships.

Clean Fuels & Energy

- Support initiatives for energy efficiency and resilience.
- Promote alternative fuel infrastructure and best practices.
- Advance community readiness for zero-emission transportation.

Freight Planning

- Improve and expand truck parking across the region.
- Address key freight movement challenges.

Public Transportation

Support transit development and current and future funding.

Policy Bundle

Incentivize regional adoption and implementation of the policies in the plan to support plan goals for safety, mobility, and quality of life.

Updated

Air Quality

Revise and implement the DFW Air Quality Improvement Plan to meet NAAQS, reduce emissions, and secure funding as needed.

Freight and Goods Movement

- Enhance intermodal freight activity, freight-friendly land use policies, and regional connections.
- Integrate technology, monitor freight traffic, and involve stakeholders in planning through economic analysis.

Highlighted Programs

*New**

Air Quality

- **Air Quality Initiatives Grants:** Provide financial support for clean technology adoption through competitive grants.
- **Performance Measurement Frameworks:** Implement new frameworks for performance-based transportation planning.
- **Regional Air Quality Monitoring:** Secure funding, set technology standards, and maintain a real-time public data platform.
- **Scrap Tire Abatement:** Prevent illegal dumping, promote clean-up, and support proper disposal through partnerships.

Clean Fuels & Energy

- **Fuel Infrastructure Development:** Expand hydrogen and electric refueling infrastructure in collaboration with stakeholders.
- **DFW Clean Cities Coalition:** Promote clean fuel adoption through education, fleet transition support, and best practices.
- **Technology Demonstration & Deployment:** Support testing and adoption of low-emission vehicles and infrastructure.
- **Energy Efficiency & Resilience:** Enhance transportation electrification and renewable energy integration.

Sustainable Development

Parking Management: Develop data-driven parking tools and strategies to improve regional parking efficiency.

Public Transportation

Local Technology Corridors: Use innovative transit technology to enhance high-capacity corridors and transit-oriented development.

Policy Bundle

Utilize mechanisms to support the adoption and implementation of the policies in the plan, aligned with RTC policy direction.

Highlighted Programs

Updated

Air Quality

- **Conventional Vehicle Emissions Reduction:** Support emissions reductions through technical assistance, education, and best practices for stakeholders.
- **Air Quality Technical Planning & Analysis:** Conduct air quality planning, technical analyses, and collaboration on Transportation Conformity and emission inventories.

Clean Fuels & Energy

Low-Emission Technology Initiatives: Promote adoption of clean transportation technologies through policies, training, and workforce development with key partners.

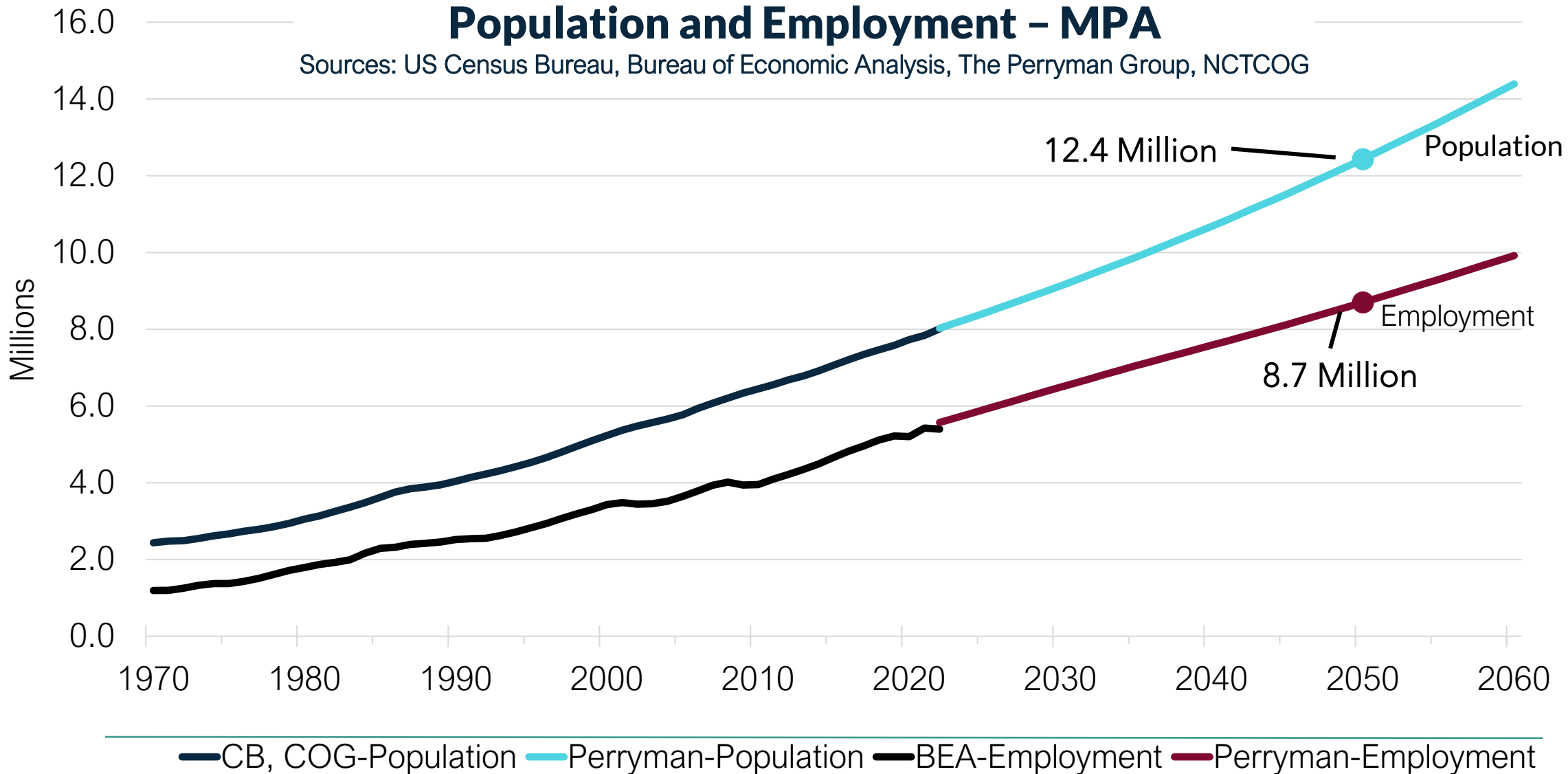
Connected/Automated Vehicles & Technologies

University Partnerships: Leverage DFW research universities to advance emerging mobility technologies on a regional and national scale.

Further details on all Policies and Programs in Mobility 2050 can be found online at www.nctcog.org/planinprogress.

Historical and Projected Total Population and Employment - MPA

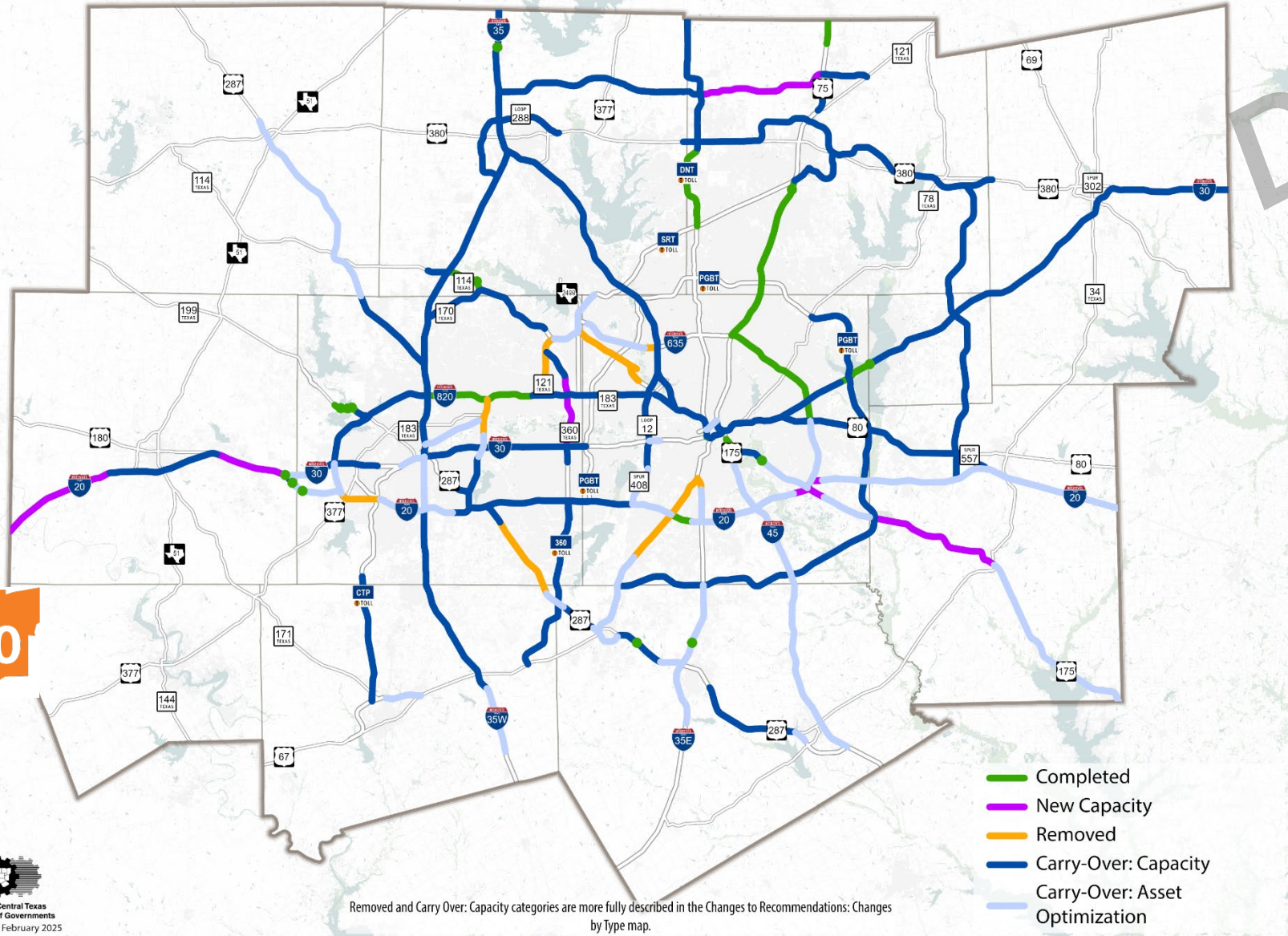
Sources: US Census Bureau, Bureau of Economic Analysis, The Perryman Group, NCTCOG



DRAFT



MOBILITY2050



- Completed
- New Capacity
- Removed
- Carry-Over: Capacity
- Carry-Over: Asset
- Optimization

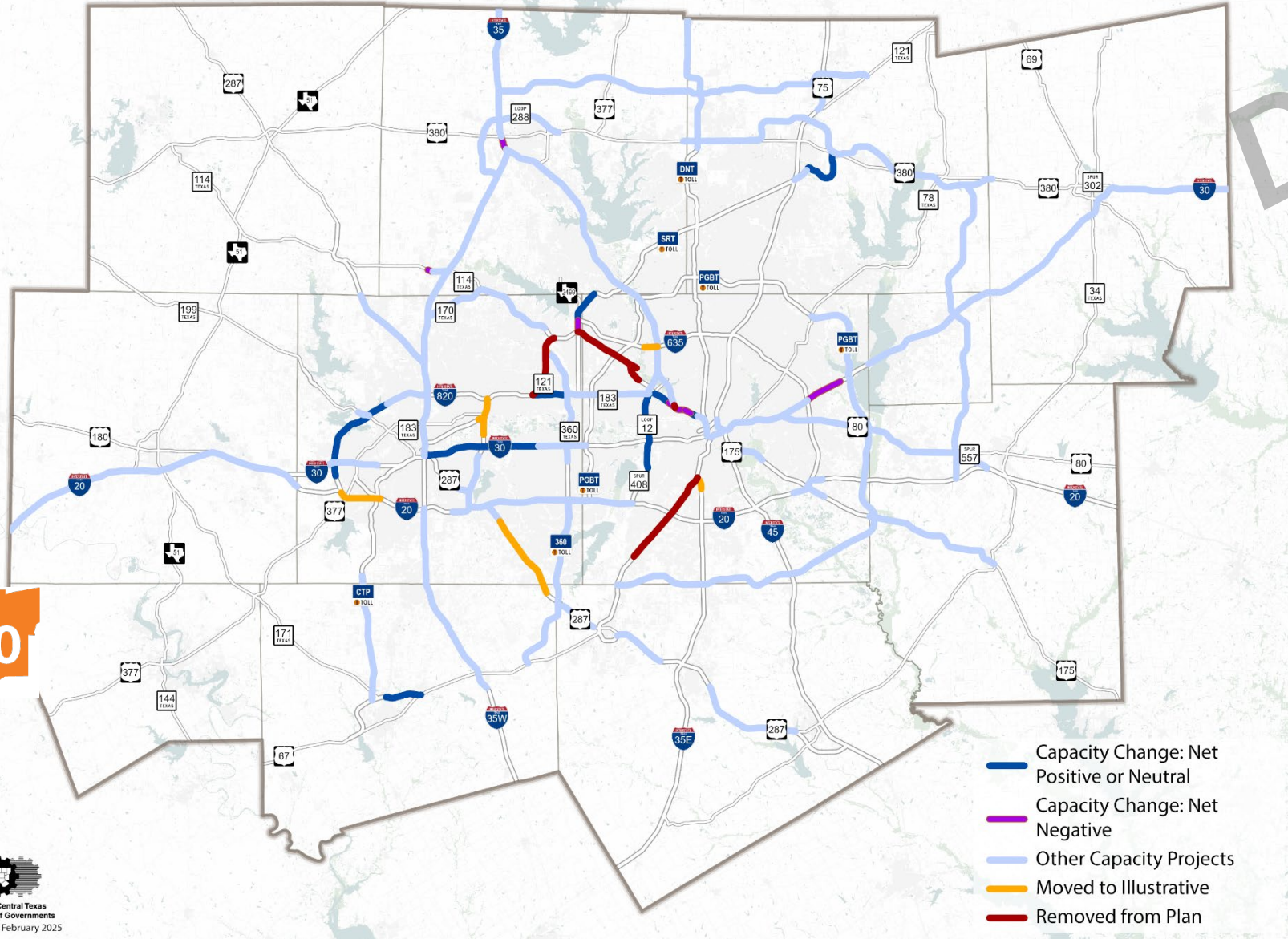


Removed and Carry Over: Capacity categories are more fully described in the Changes to Recommendations: Changes by Type map.

DRAFT



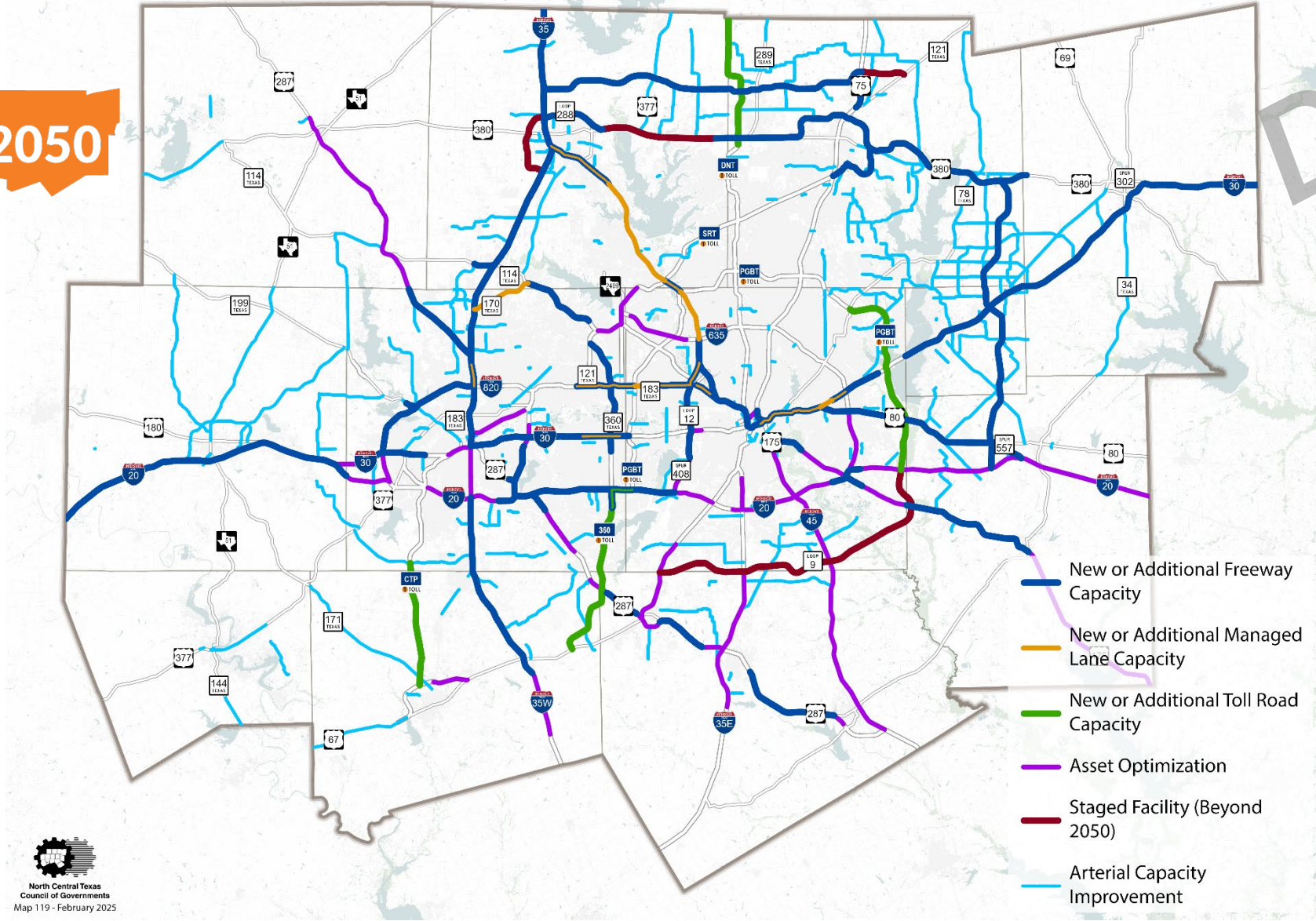
MOBILITY2050



- Capacity Change: Net Positive or Neutral
- Capacity Change: Net Negative
- Other Capacity Projects
- Moved to Illustrative
- Removed from Plan

North Central Texas Council of Governments Map 120 - February 2025

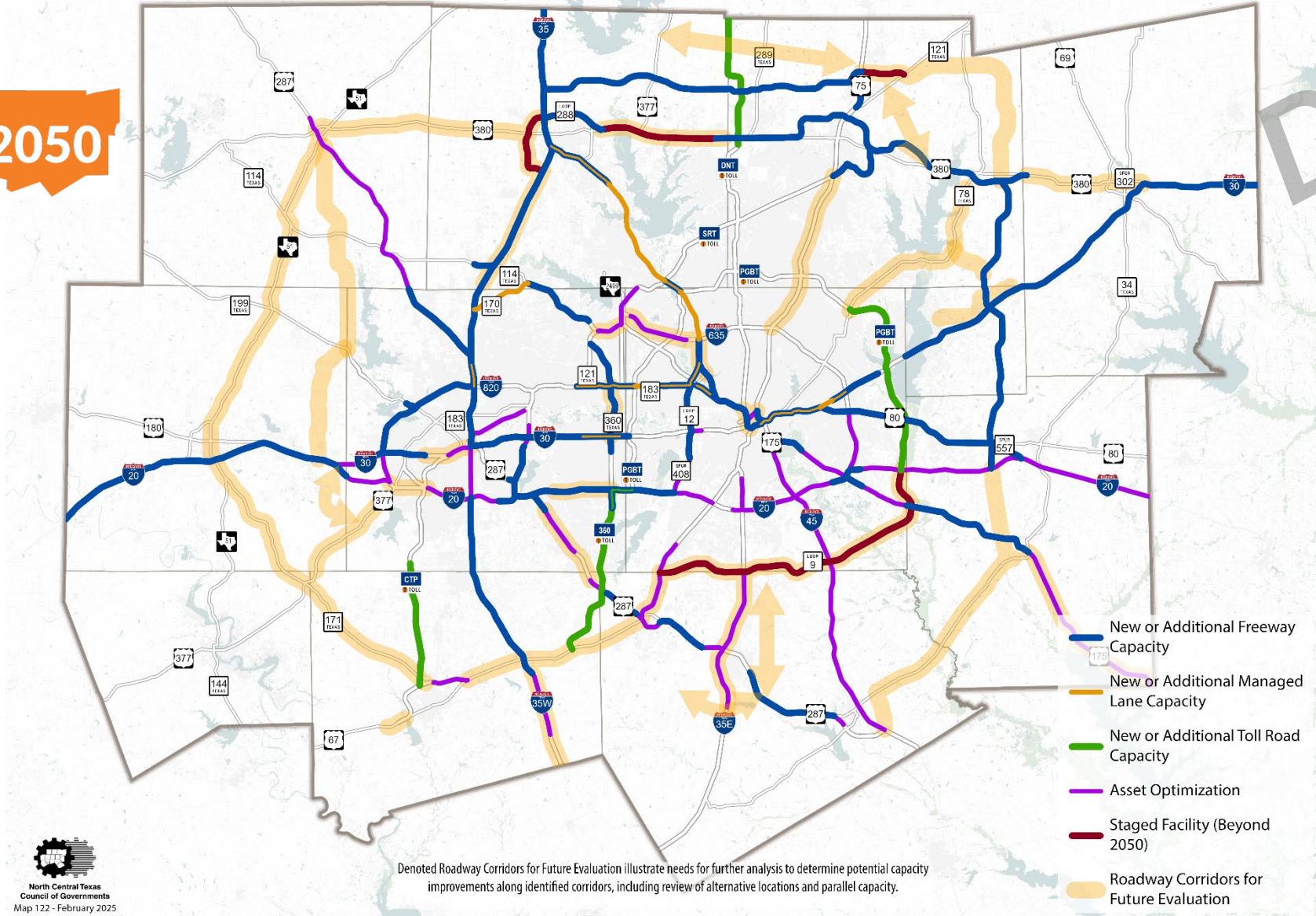
DRAFT



North Central Texas
Council of Governments
Map 119 - February 2025

- New or Additional Freeway Capacity
- New or Additional Managed Lane Capacity
- New or Additional Toll Road Capacity
- Asset Optimization
- Staged Facility (Beyond 2050)
- Arterial Capacity Improvement

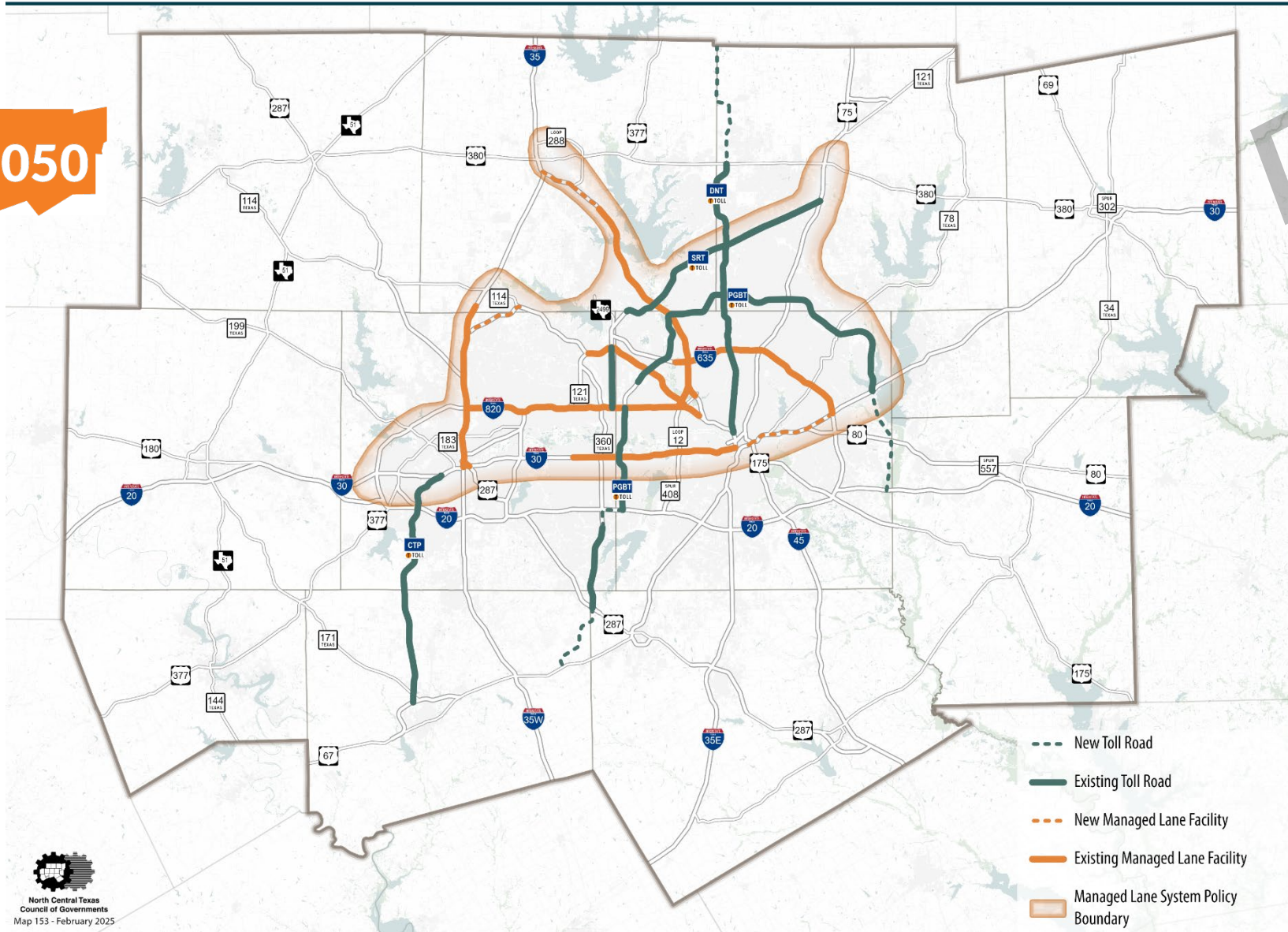
DRAFT



North Central Texas Council of Governments
Map 122 - February 2025

Denoted Roadway Corridors for Future Evaluation illustrate needs for further analysis to determine potential capacity improvements along identified corridors, including review of alternative locations and parallel capacity.

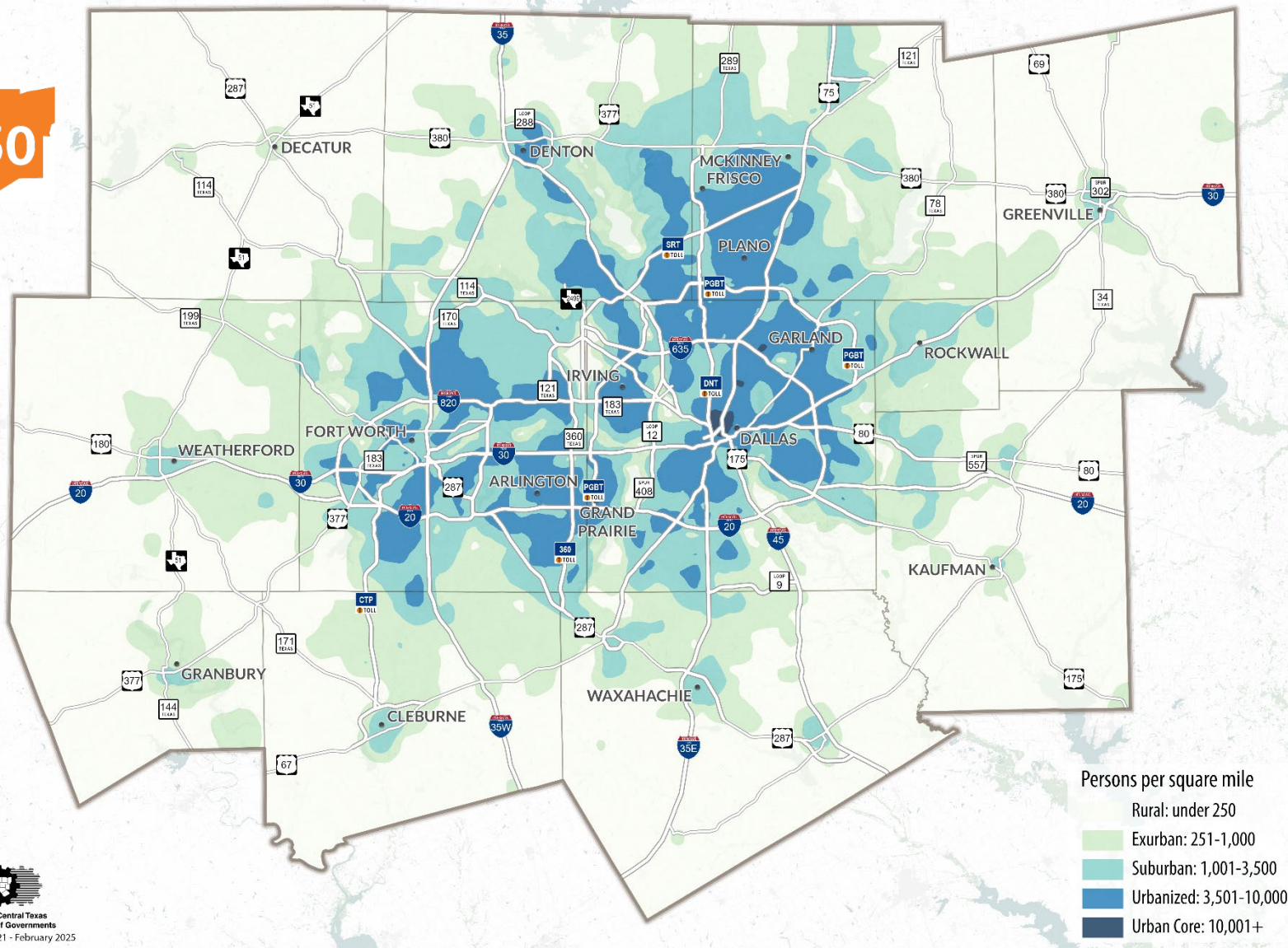
DRAFT



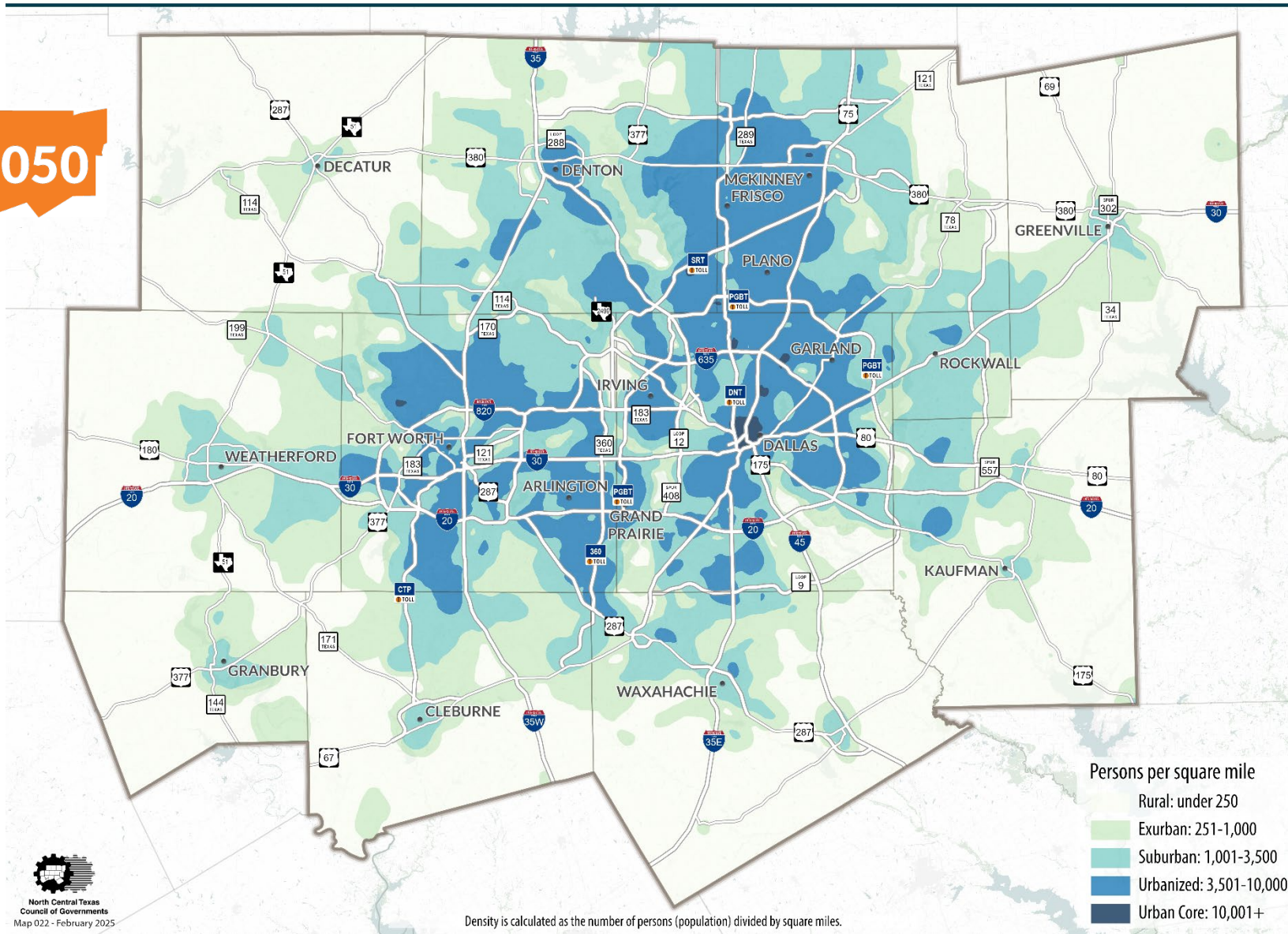
- - - New Toll Road
- Existing Toll Road
- - - New Managed Lane Facility
- Existing Managed Lane Facility
- Managed Lane System Policy Boundary

North Central Texas
Council of Governments
Map 153 - February 2025

MOBILITY2050

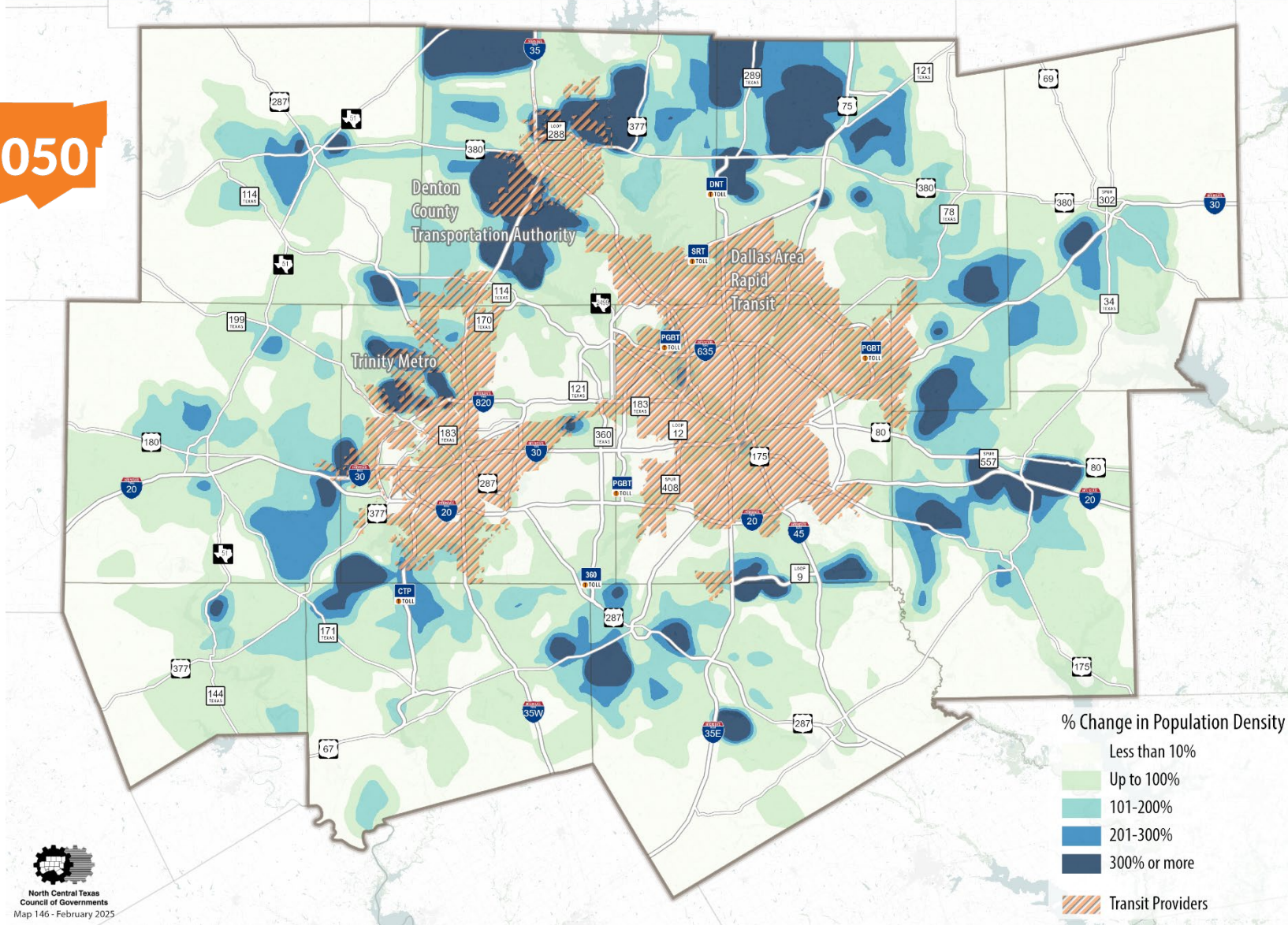


MOBILITY2050



North Central Texas
Council of Governments
Map 022 - February 2025

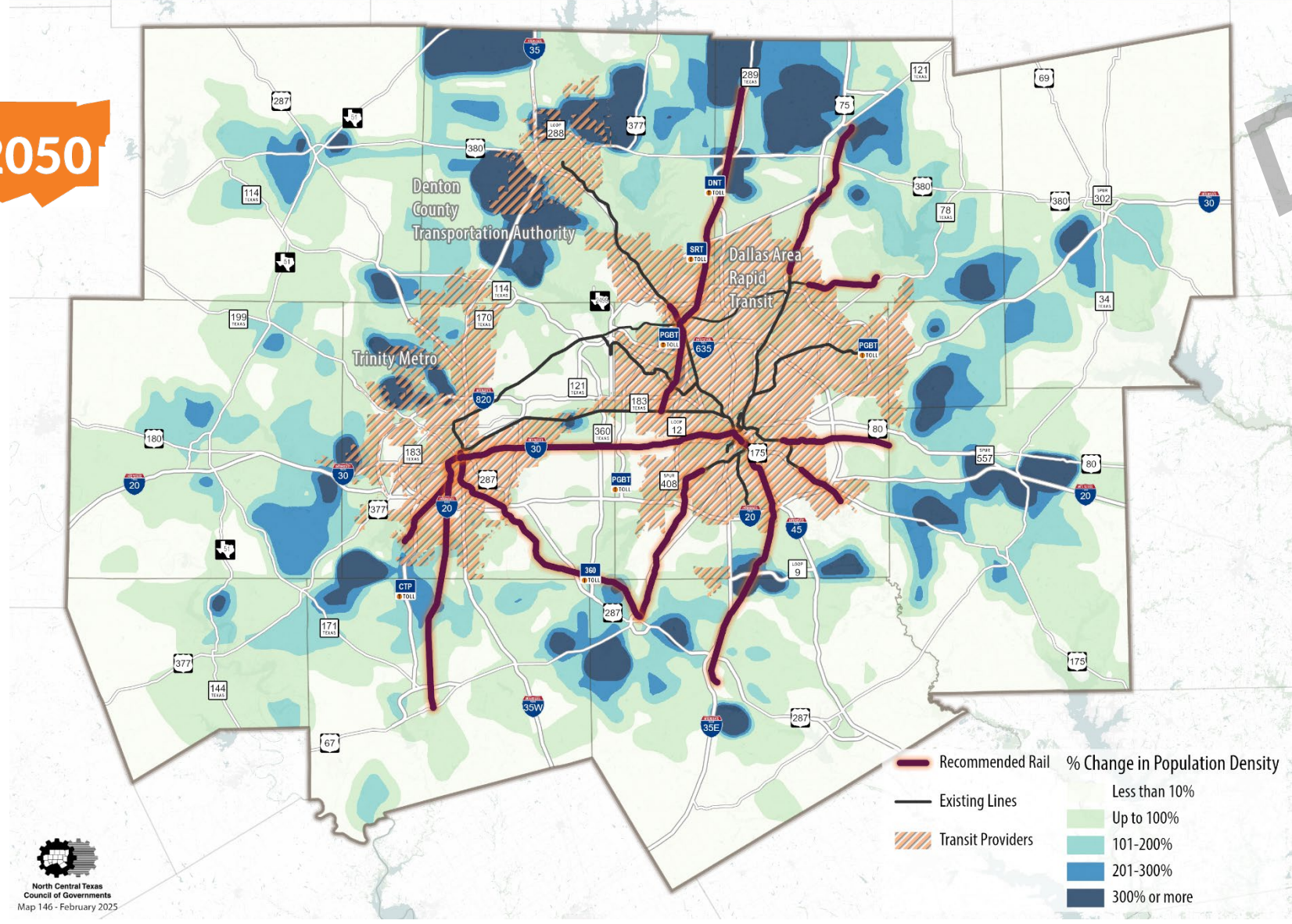
MOBILITY2050



North Central Texas Council of Governments
Map 146 - February 2025

This map presents a smoothed, interpolated representation of population change using rasterized Traffic Analysis Zones (TAZs). The interpolation process may introduce artificial growth patterns in areas where no actual development is expected. This visualization is intended for illustrative purposes only. For precise population change data, please refer to the original TAZ-based dataset.

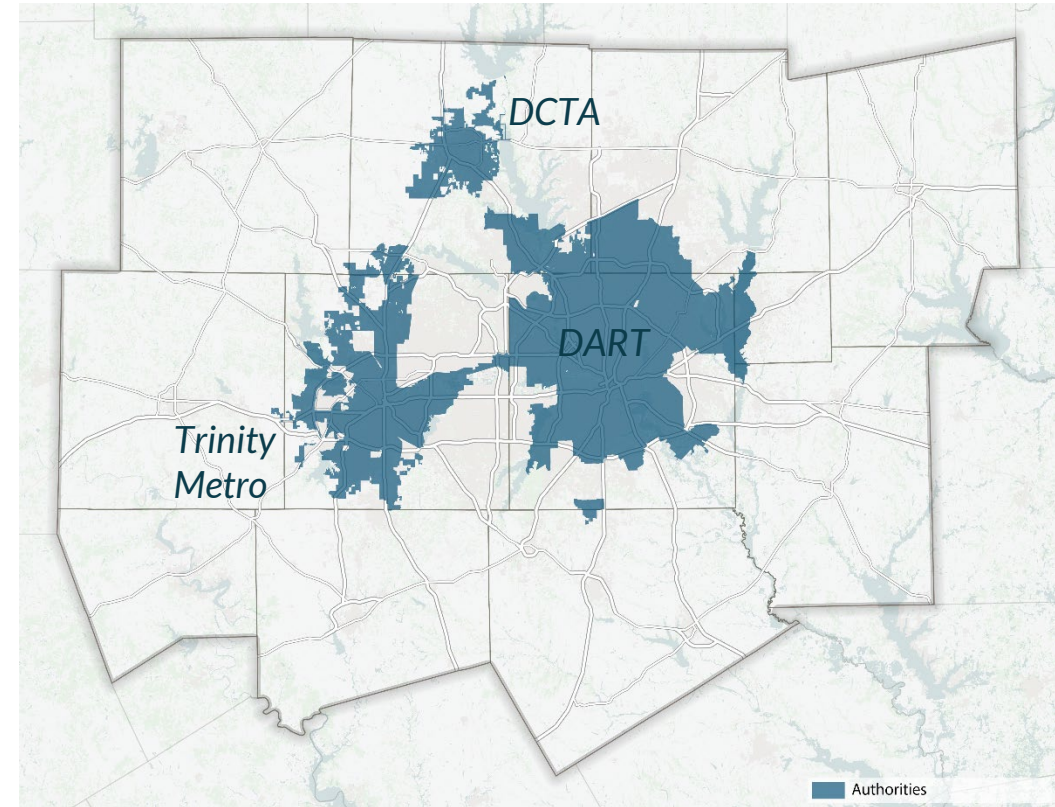
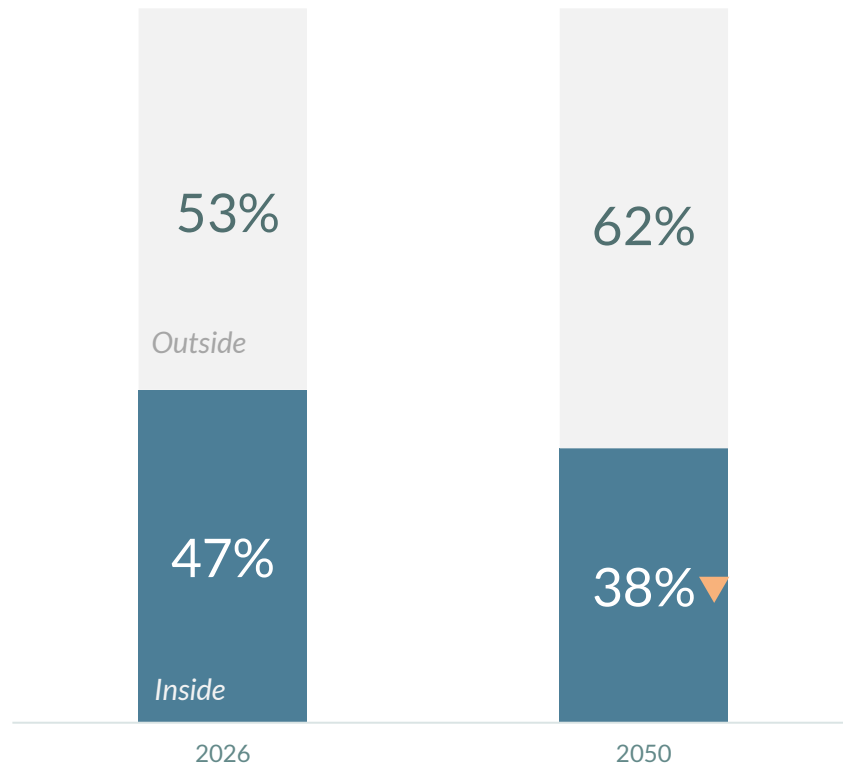
DRAFT



North Central Texas Council of Governments
Map 146 - February 2025

This map presents a smoothed, interpolated representation of population change using rasterized Traffic Analysis Zones (TAZs). The interpolation process may introduce artificial growth patterns in areas where no actual development is expected. This visualization is intended for illustrative purposes only. For precise population change data, please refer to the original TAZ-based dataset.

The population living inside a transit authority service area is expected to fall from 47% in 2026 to 38% by 2050



Work Commutes by Transit: Expectations vs. Reality

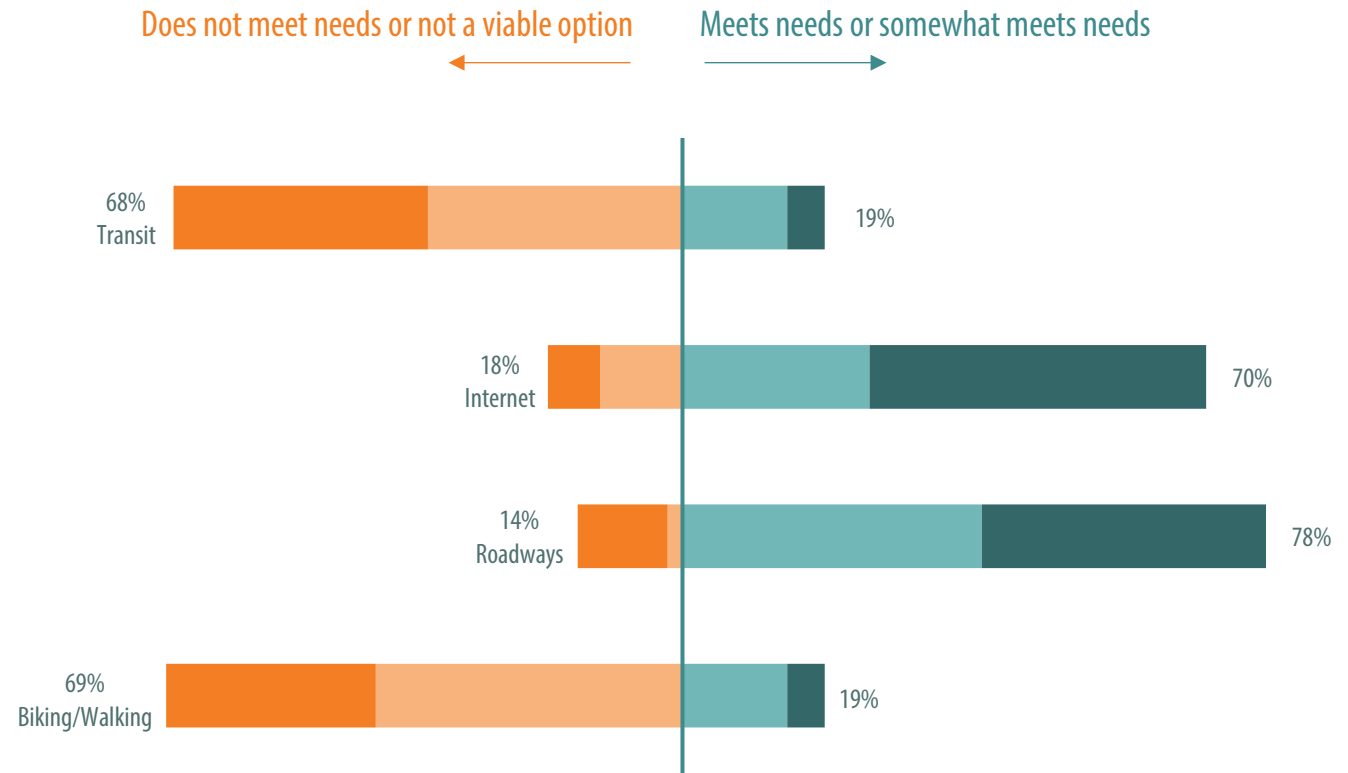
Preferred Mode

1 Transit - 2,485 votes

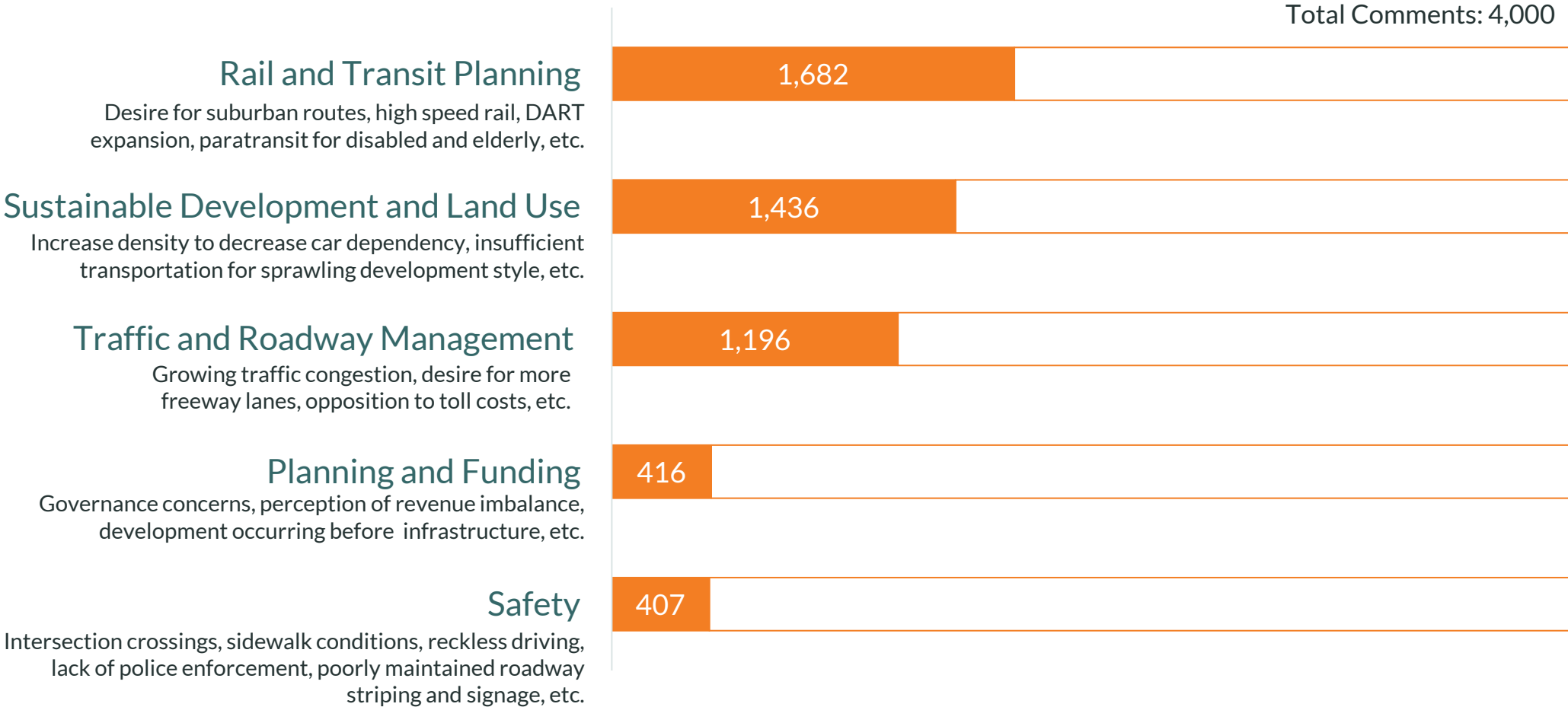
2 Internet - 2,481 votes

3 Roadways - 2,481 votes

4 Biking/Walking - 2,478 votes



Rail and Transit Planning is the most prevalent theme in public comments

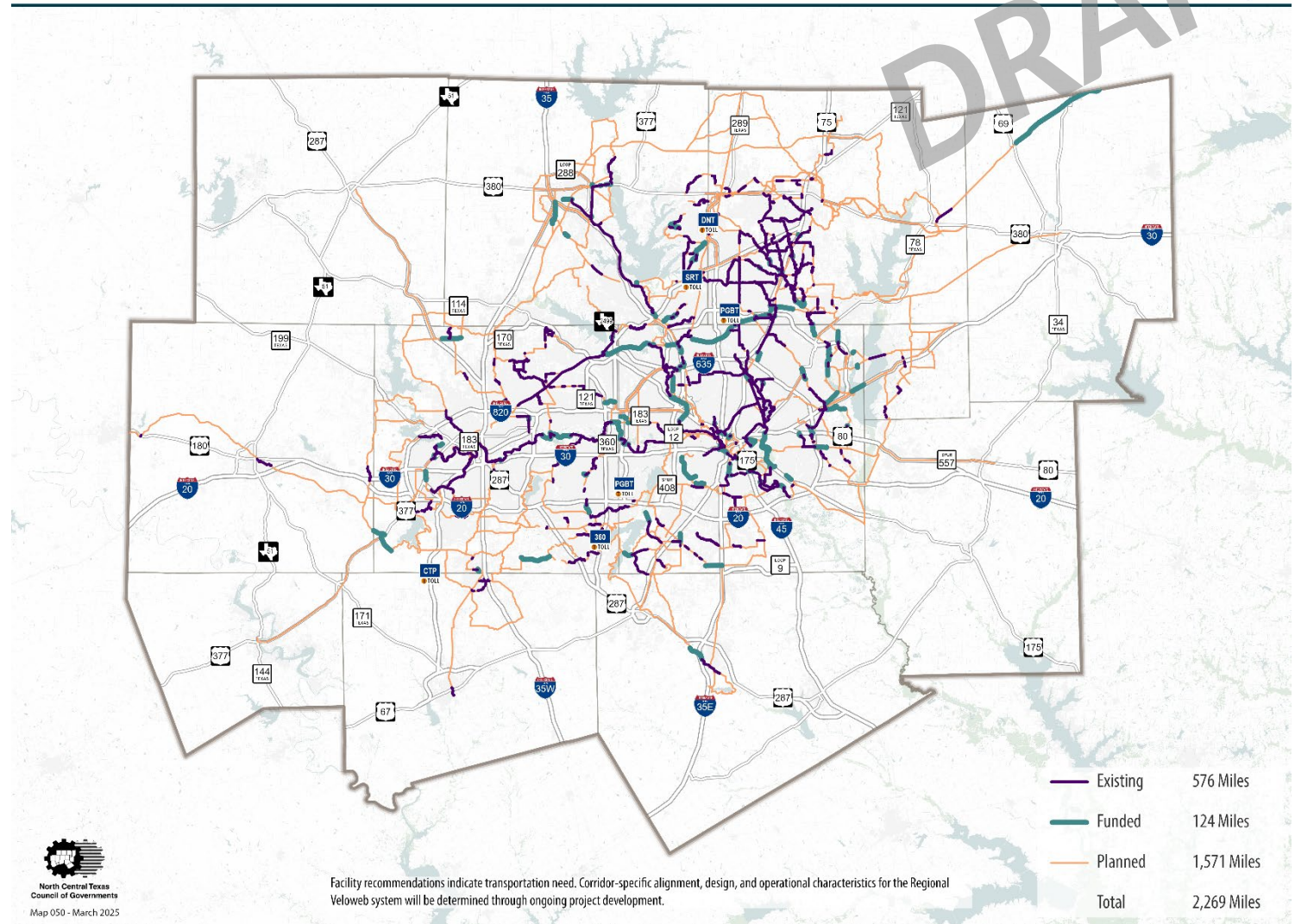
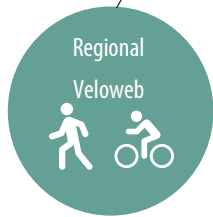


Active Transportation Recommendations

Regional Veloweb

MOBILITY 2050

MOBILITY 2050



The Nondiscrimination Analysis of Mobility 2050 projects found no disparate impacts.

What is it?

The analysis evaluates whether transportation investments in Mobility 2050 disproportionately impact protected populations (minority and low-income communities) under Title VI of the Civil Rights Act.

Why do we do it?

Federal law requires MTPs to assess whether projects result in disparate benefits or burdens to different population groups, ensuring fair access to transportation improvements.

What did we find?

The analysis of job access and congestion levels found **no disparate impacts**. Mobility improvements benefit both protected and non-protected populations, with similar changes in congestion.

Schedule to Adoption

Time Frame	Milestone
February 2025	Financial Plan and Roadway Recommendations (Information)
March 2025	Demographic Review and Transit Recommendations + Programs (Action)
April-May 2025	Required 60-day Public Comment Period RTC Information (Plan and Air Quality)
June 2025	RTC Action to Adopt Mobility 2050
July – December 2025	Federal Transportation Conformity Review Period

Requested Action

Direct staff to take draft Mobility 2050 policy, program, and project recommendations, including associated air quality conformity and nondiscrimination analyses, to public meetings for review and comment.

Staff will provide update to RTC in May and June on public feedback.

Further detail on all recommendations in Mobility 2050, including maps and project listings, can be found online at www.nctcog.org/planinprogress.

Mobility Plan Contacts



Amy Johnson

Principal Transportation Planner

ajohnson@nctcog.org | 817-704-5608



Brendon Wheeler, P.E., CFM

Program Manager

bwheeler@nctcog.org | 682-433-0478



Dan Lamers, P.E.

Senior Program Manager

dlamers@nctcog.org | 817-695-9263