

# AUTOMOTIVE RELATED BUSINESS

## Protecting the Environment and Your Business

[www.WebsiteHere.com](http://www.WebsiteHere.com)

### Do you own an Automotive Related Business?

Automotive Related Business (ARBs) are any facility whose overall business is repairing, maintaining, painting, salvaging, or selling automobiles or parts. In many communities, ARBs represent some of the largest contributors of hazardous discharges and are required to ensure that none of this waste is released into the stormwater system. Ordinances have been developed to prohibit these discharges. Violating these ordinances could result in a citation.

### What is Stormwater Runoff?

Stormwater runoff is the water that flows off roofs, driveways, parking lots, streets and other hard surfaces during rain storms. Instead of infiltrating into the ground, it flows into storm drains

What falls in here,  ends up here.



Stormwater runoff receives NO TREATMENT before entering waterways, and it might contain toxic substances such as solvents, oils, heavy metals, and washing fluids.

### Ways Your Business Might Pollute Stormwater



Allowing vehicle fluids to fall to the ground and wash away.

Improper storage of waste fluids.



Improper vehicle washing outdoors.

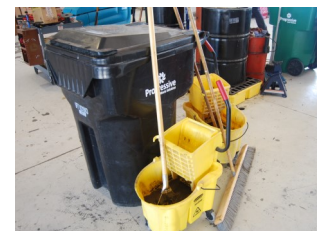
### How You Can Prevent Stormwater Pollution

Chemicals, paints, oils and any other material that could wash off-site should be correctly stored or protected.



Do not let water from washing, discharge points, oil traps, filters and separators run to stormwater drains.

Ensure that appropriate spill response equipment is available and accessible at all times.



### Contact Us

Insert email here  
Insert address here  
Insert phone number here

City Logo  
Here