



# **City-ISD Coordination in Frisco**

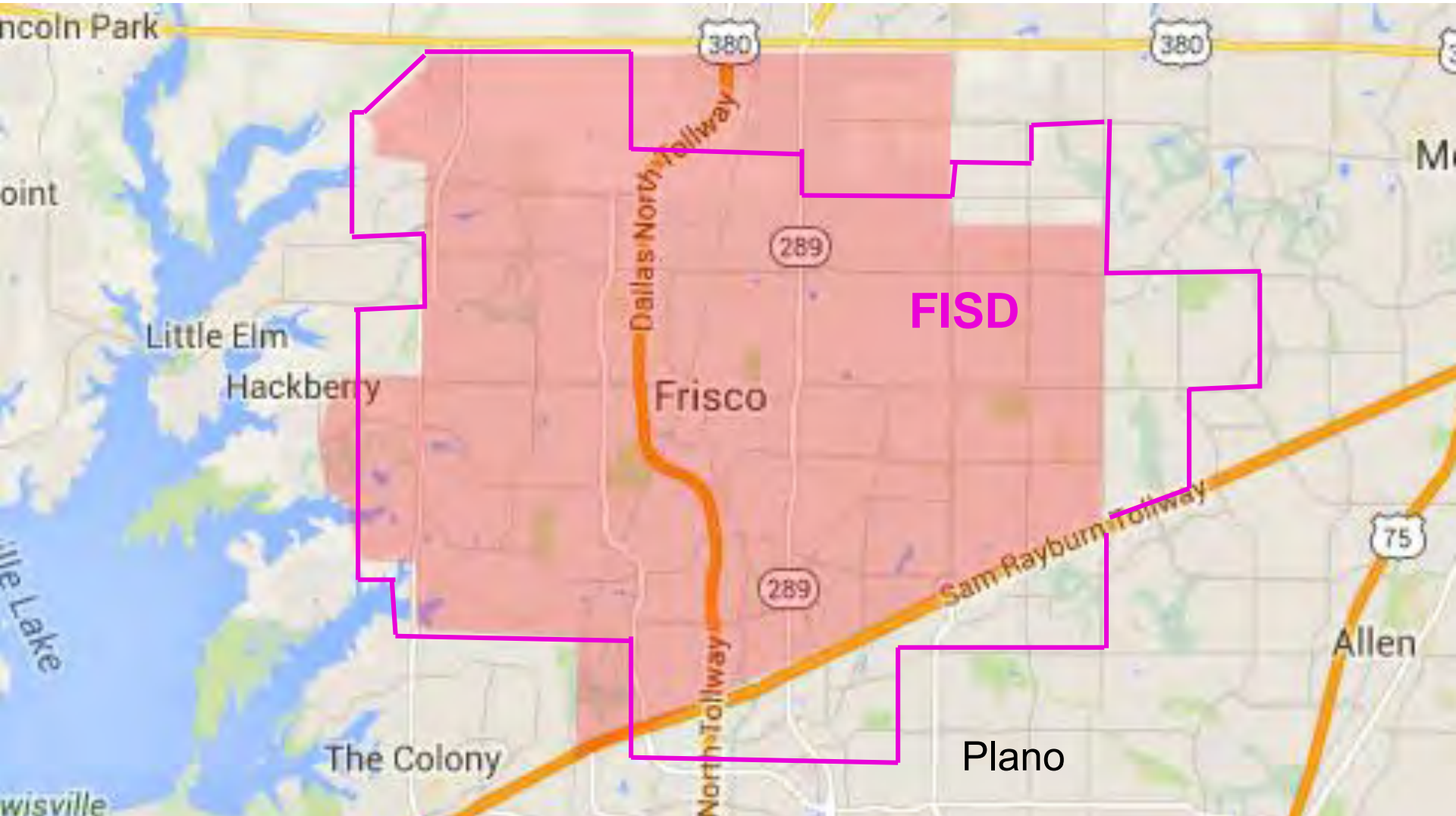
Joel Fitts, Senior Traffic Engineer  
City of Frisco

NCTCOG  
October 25, 2016



PROGRESS IN MOTION

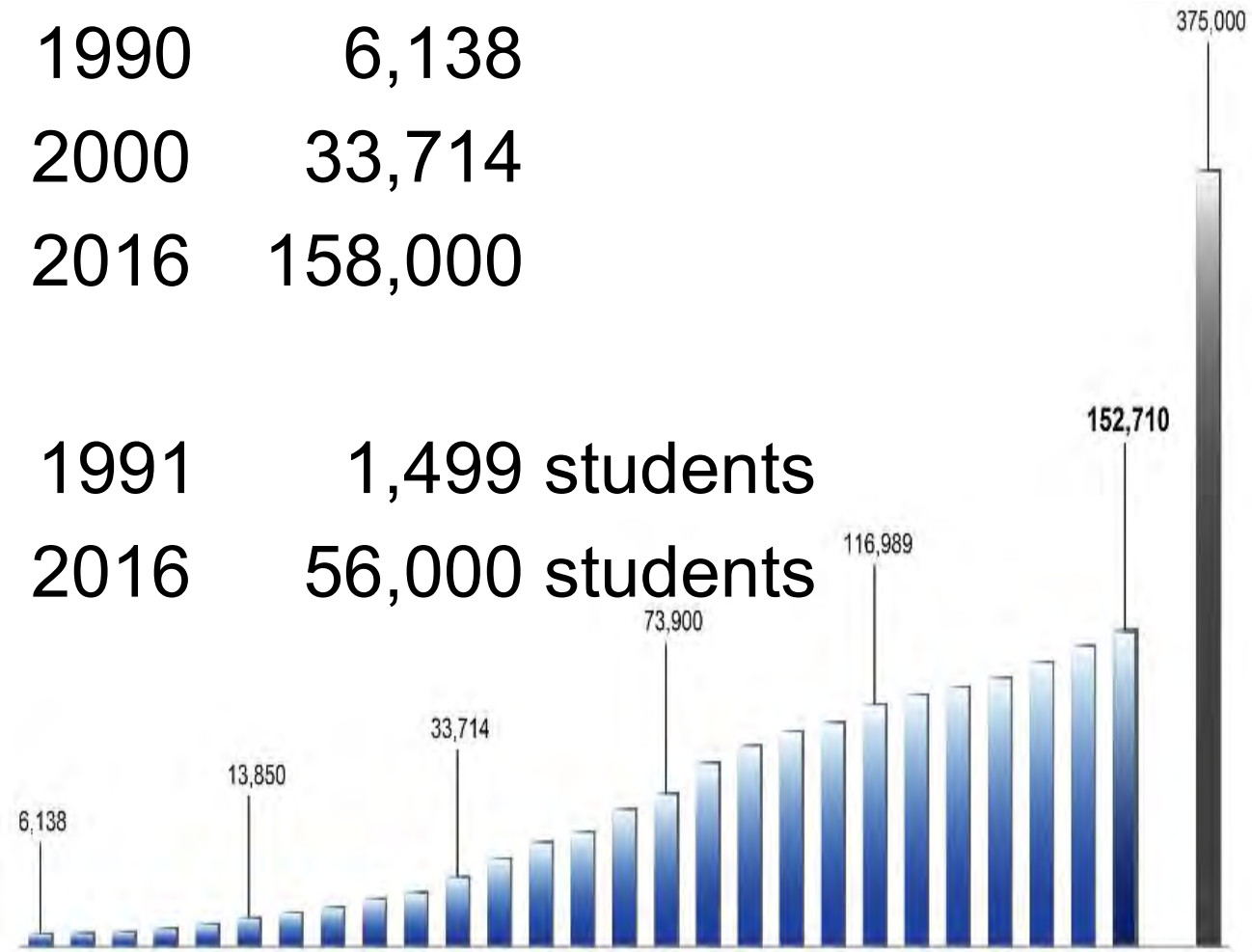
# Frisco





# Fast Growth

- Fastest growing City and ISD in the nation
- Population: 1990 6,138
- 2000 33,714
- 2016 158,000
  
- Enrollment: 1991 1,499 students
- 2016 56,000 students

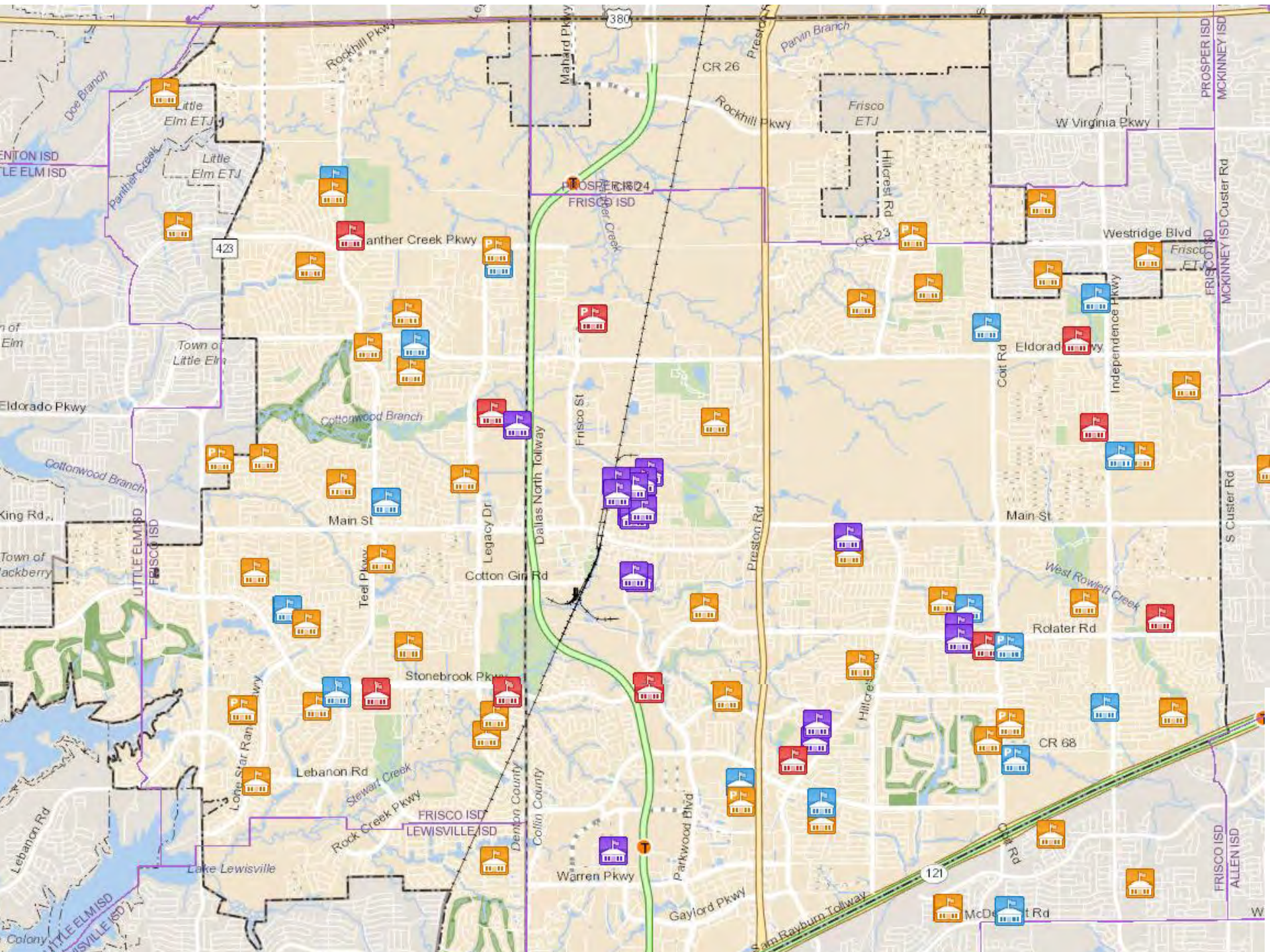


# Frisco ISD

- Small campus model
  - Elementary: 700 students
  - Middle School: 1,000 students
  - High School: 2,100 students (Class 5A)



- Open 2-4 schools every year since 1993





# Frisco ISD

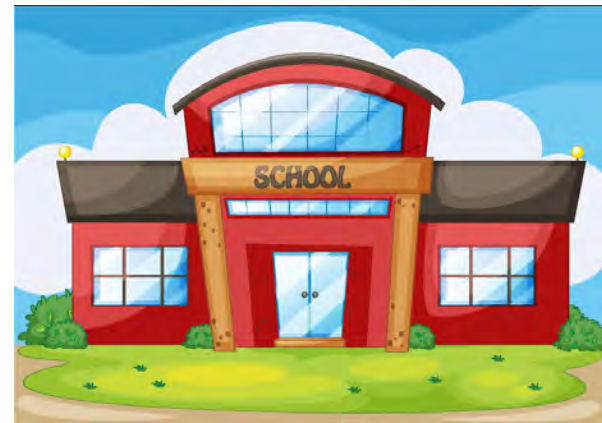
- 40 Elementary Schools (28 in Frisco)
- 16 Middle Schools (14 in Frisco)
- 9 High Schools (All in Frisco)
- 3 Special Program Centers (All in Frisco)
  
- 4 schools under construction (in Frisco)
- 5 schools under design (4 in Frisco)
- Own 4 other future school sites(2 in Frisco)

# Frisco ISD

- 40 Elementary Schools (28 in Frisco)
- 16 Middle Schools (14 in Frisco)
- 9 High Schools (All in Frisco)

## Potential Build Out (76,000 students)

- 54 Elementary Schools
- 22 Middle Schools
- 13 High Schools



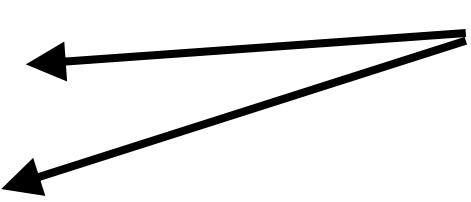
# Coordination

- Demographics
- Site Selection
- Infrastructure Needs
- School Design
- Safe Routes to School
- School Traffic & Ped Issues



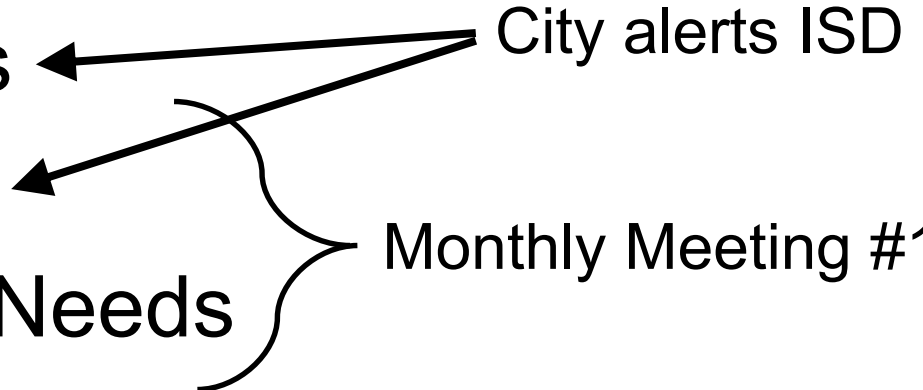


# Coordination

- Demographics
  - Site Selection
  - Infrastructure Needs
  - School Design
  - Safe Routes to School
  - School Traffic & Ped Issues
- City alerts ISD
- 

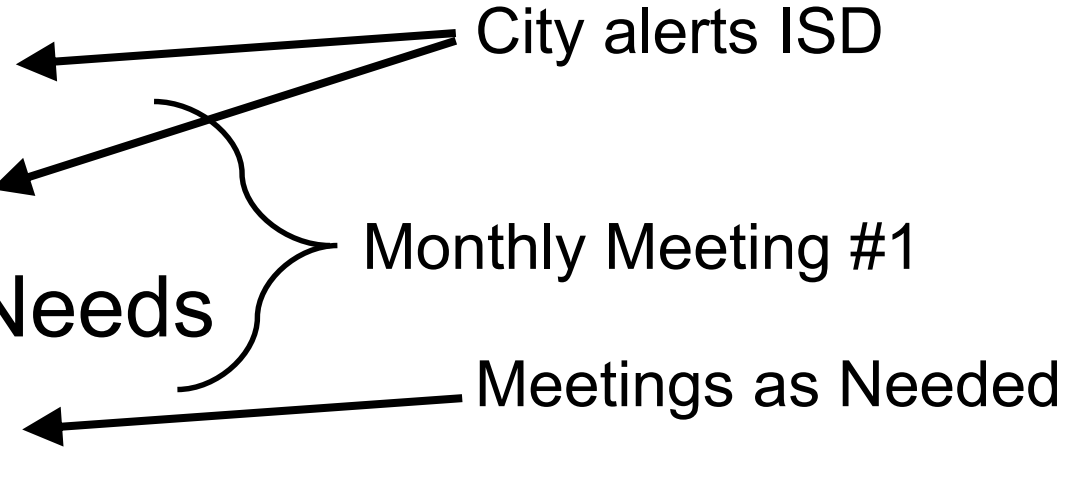


# Coordination

- Demographics
  - Site Selection
  - Infrastructure Needs
  - School Design
  - Safe Routes to School
  - School Traffic & Ped Issues
- City alerts ISD
- Monthly Meeting #1
- 



# Coordination

- Demographics
  - Site Selection
  - Infrastructure Needs
  - School Design
  - Safe Routes to School
  - School Traffic & Ped Issues
- City alerts ISD
- Monthly Meeting #1
- Meetings as Needed
- 



# Coordination

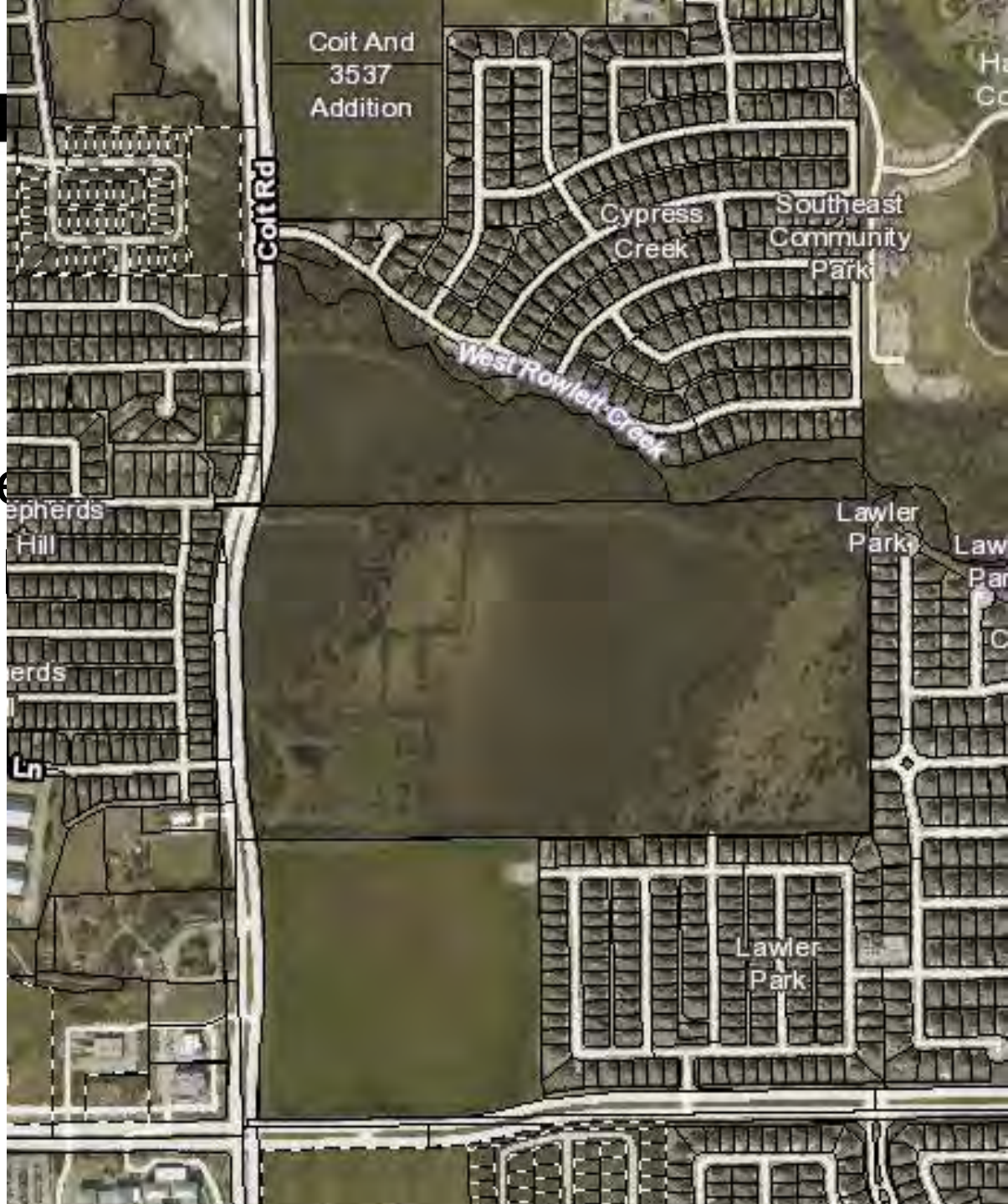
- Demographics
  - Site Selection
  - Infrastructure Needs
  - School Design
  - Safe Routes to School
  - School Traffic & Ped Issues
- City alerts ISD
- Monthly Meeting #1
- Meetings as Needed
- Monthly Meeting #2



# Site Selection

- Earliest Step: Planning Department
  - Pre-Development  
(Does FISD need a school here?)





- Earliest  
– Pre-De  
(Does



Coit And  
3537  
Addition



ARK ROAD

CANOE ROAD

COIT ROAD

HILL LANE

LYNNE DRIVE

74s

65N

74s

55s

55s

1.2 Acres

65s

74s

74s

55s

65s

40s

65s

# Site Selection

- Earliest Step: Planning Department
  - Pre-Development  
(Does FISD need a school here?)
  - Development Approval  
(Notify FISD for demographic purposes)





# Site Selection & Infrastructure Needs

- Monthly Meeting #1
- Todd Fouche, Deputy Superintendent for Business Services
- Discuss potential sites
- Infrastructure needs
  - Roads
  - Utilities
  - Sidewalks





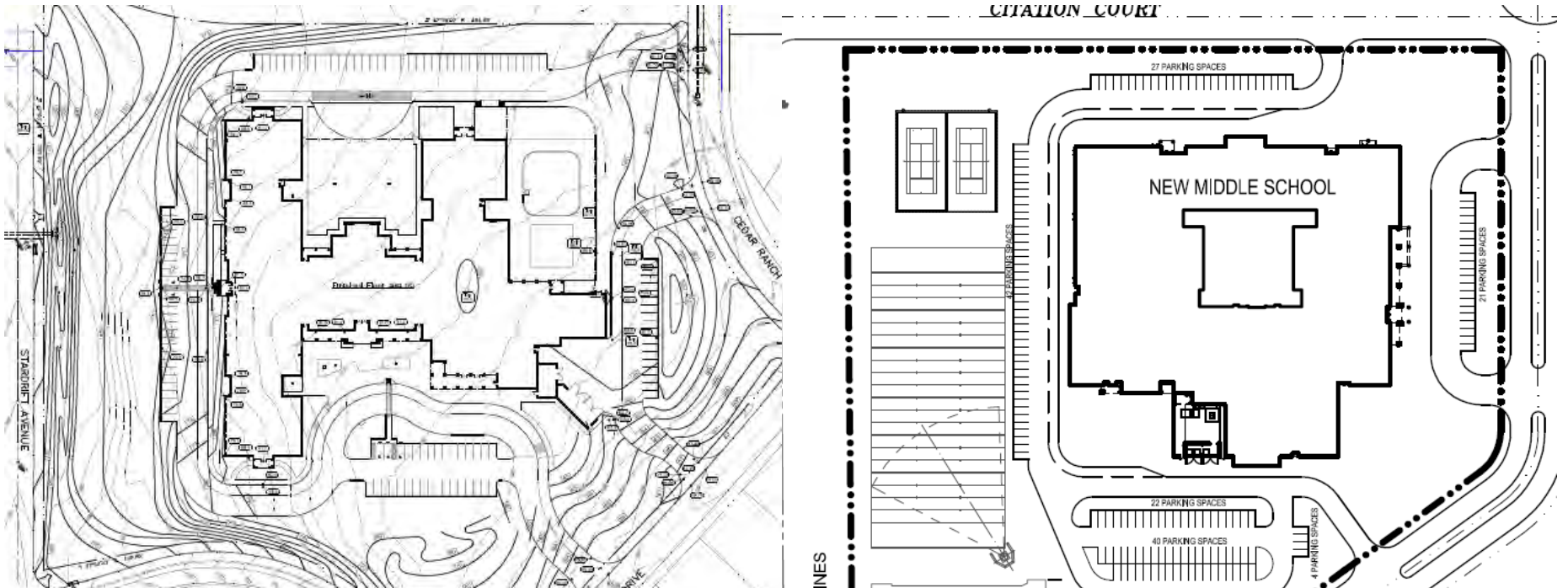
PROGRESS IN MOTION

# Site Selection & Infrastructure Needs



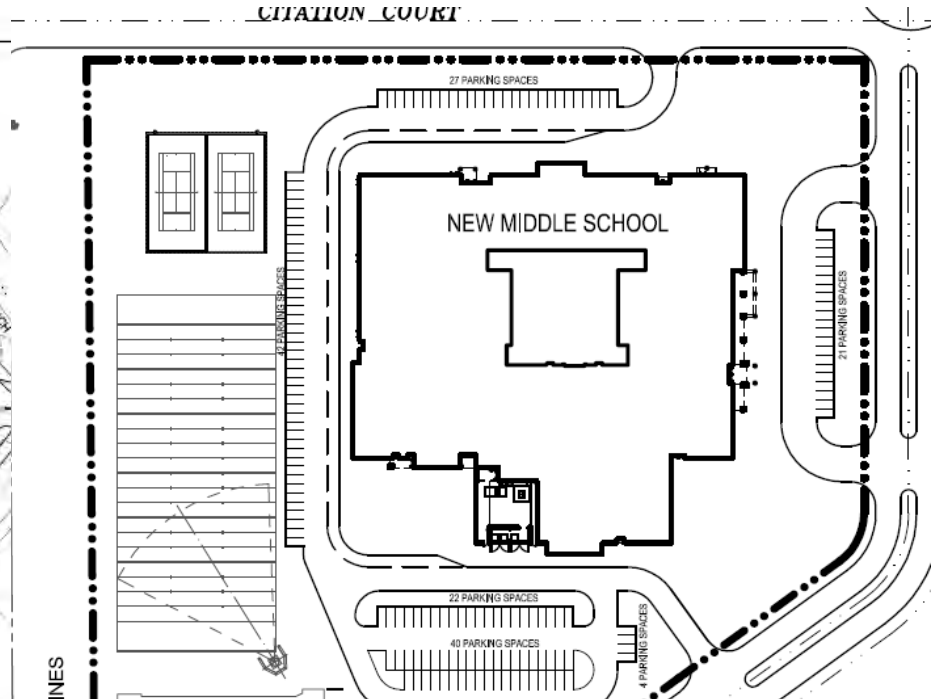
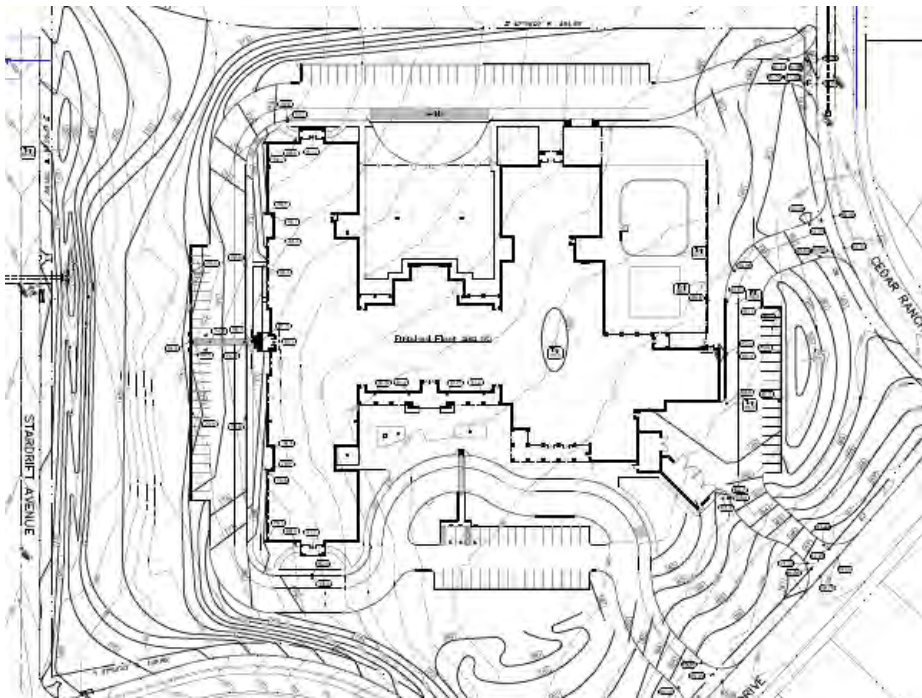
# School Design

- Pre-submittal Meetings with FISD architect and engineer
- Exchange drafts before official submittal



# School Design

- Standard circulation strategies
- Connections to neighborhoods & thoroughfares

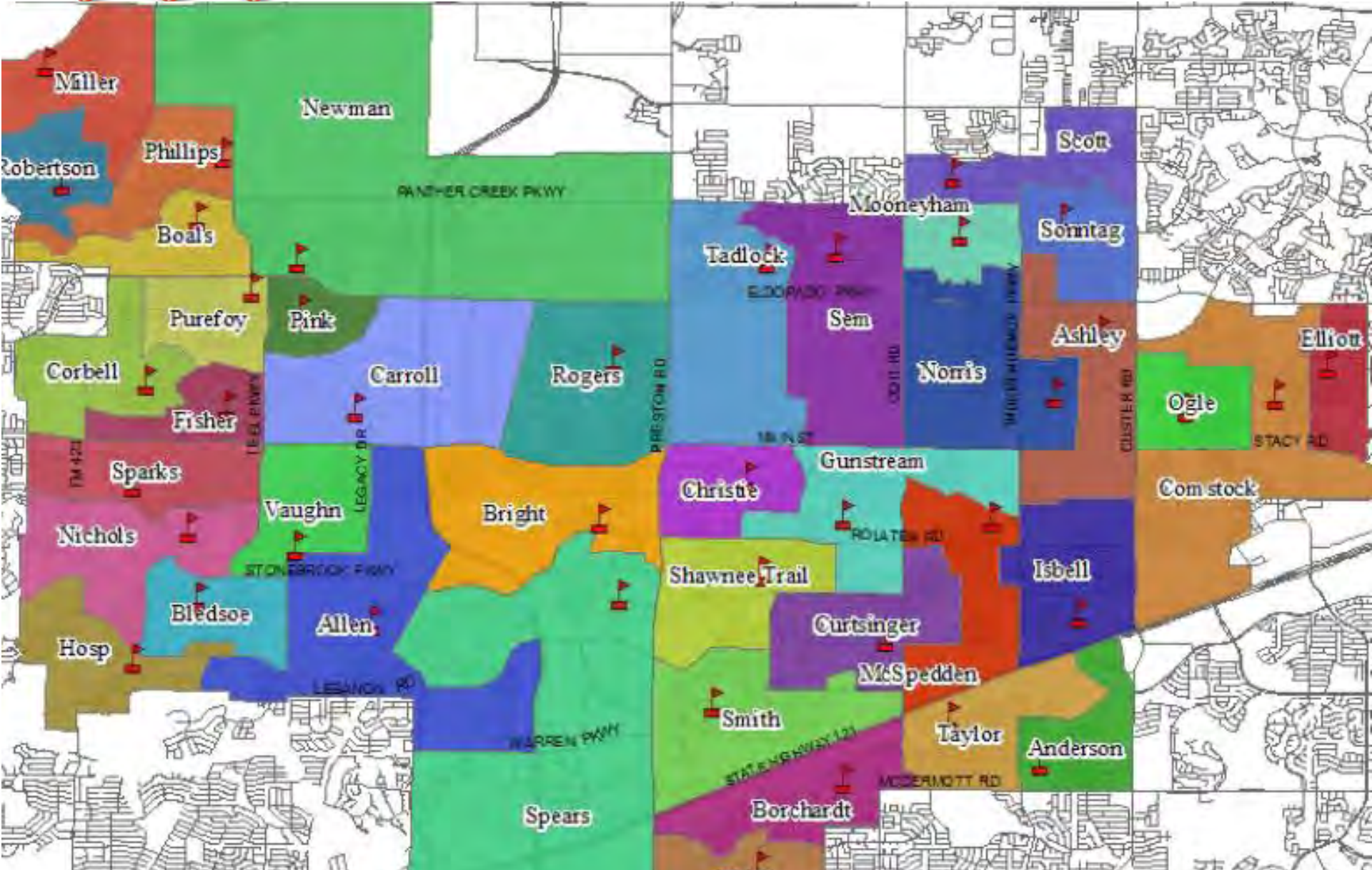


# Safe Routes to School

- New school design
  - Entrance in relationship to streets
  - Driveways and nearby traffic control
- New Neighborhoods
- Attendance Boundaries
  - Fast growth = rezoning every year
- Crossing Guards
- Annual Sidewalk Program



# FRISCO



# School Traffic Operations

- Monthly Meeting #2
- City Traffic Engineers
- Police Department (Deputy Chief and SROs)
- Doug Zambiasi, Deputy Superintendent for Support Services
- Director of Transportation (& Asst. Director)
- Bus Routing Supervisor
- Crossing Guard Supervisor
- Director of Security (& Manager)



# School Traffic Operations

- Monthly Meeting #2
- School traffic complaints
- Student pedestrian complaints
- Crossing guard requests
- Road construction impacts on buses, peds, etc.
- Sidewalk needs
- Rezoning/Safe Routes to School
- Circulation plans for new schools
- On-Campus training





Park Place Drive Phase 2  
Doc. No. 2013-230  
Dated 07-18-09 PG 1-60  
Sage Family Residential

Crossing Guard

Exit Only

No Parking

No Parking

Gate Drive

Enter Only

Buses Only

Morning Drop Off  
(All Grades)

No Parking

Vaughn  
Elementary

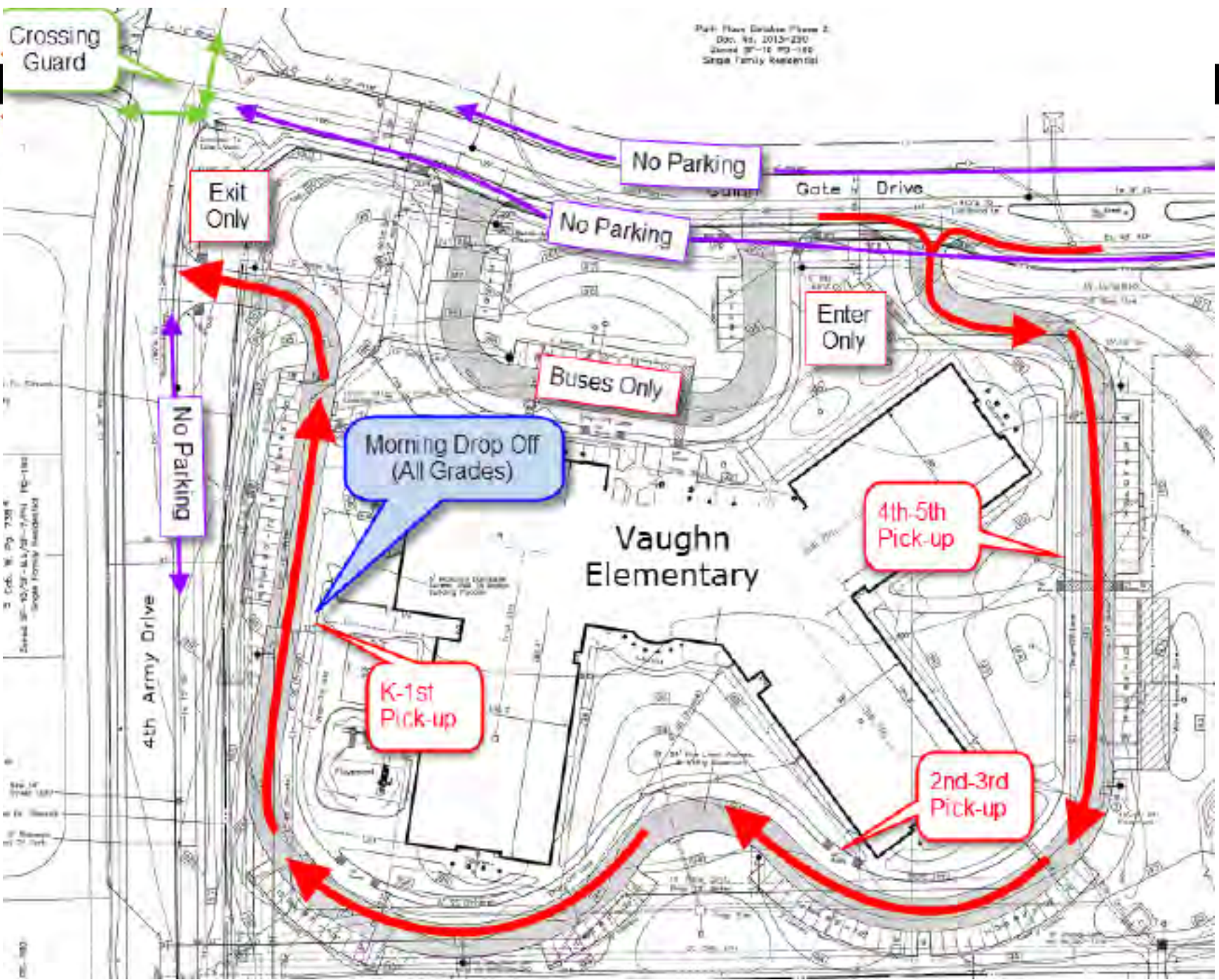
4th-5th  
Pick-up

4th Army Drive

K-1st  
Pick-up

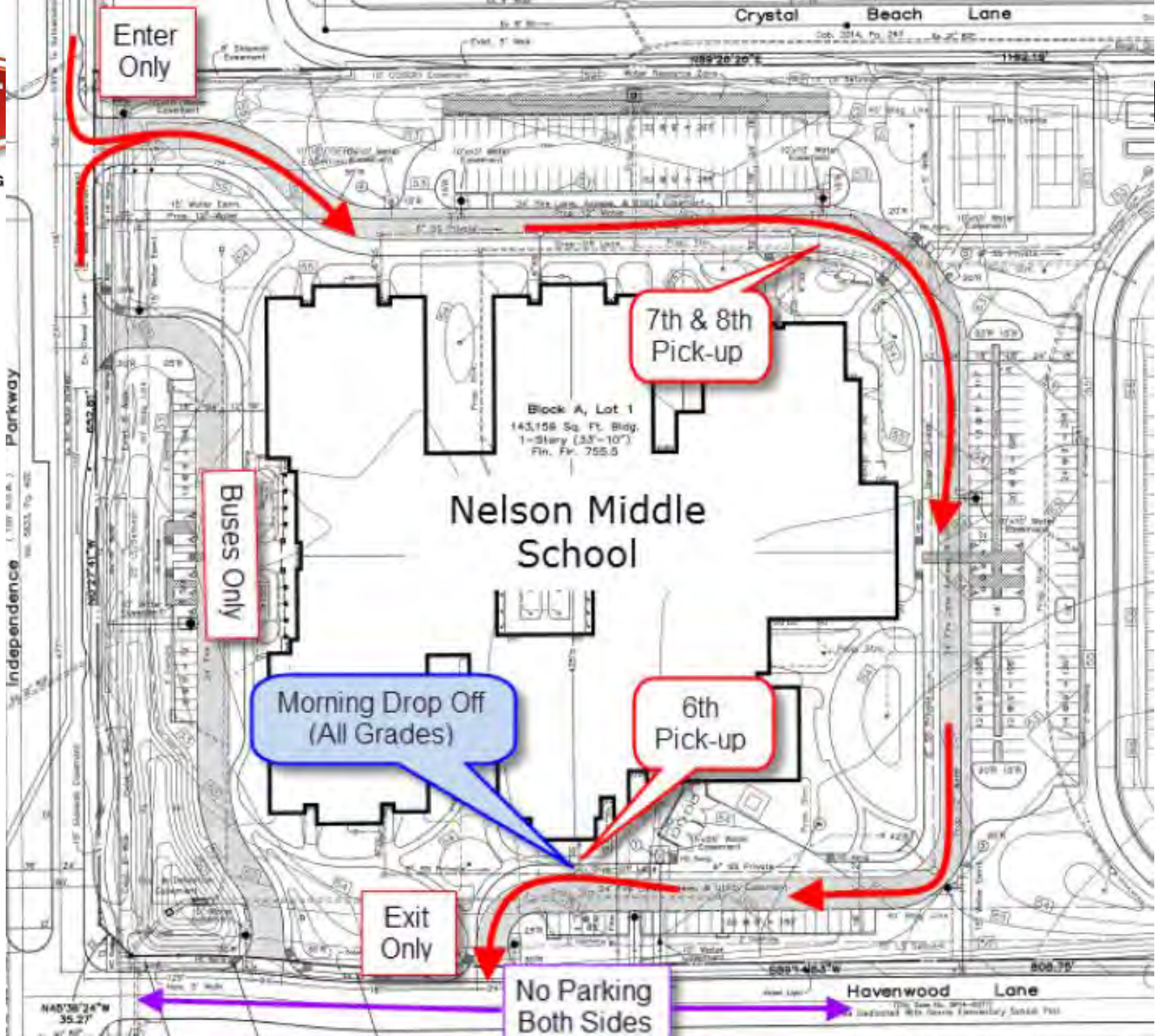
2nd-3rd  
Pick-up

City of...  
2013-230  
Sage Family Residential

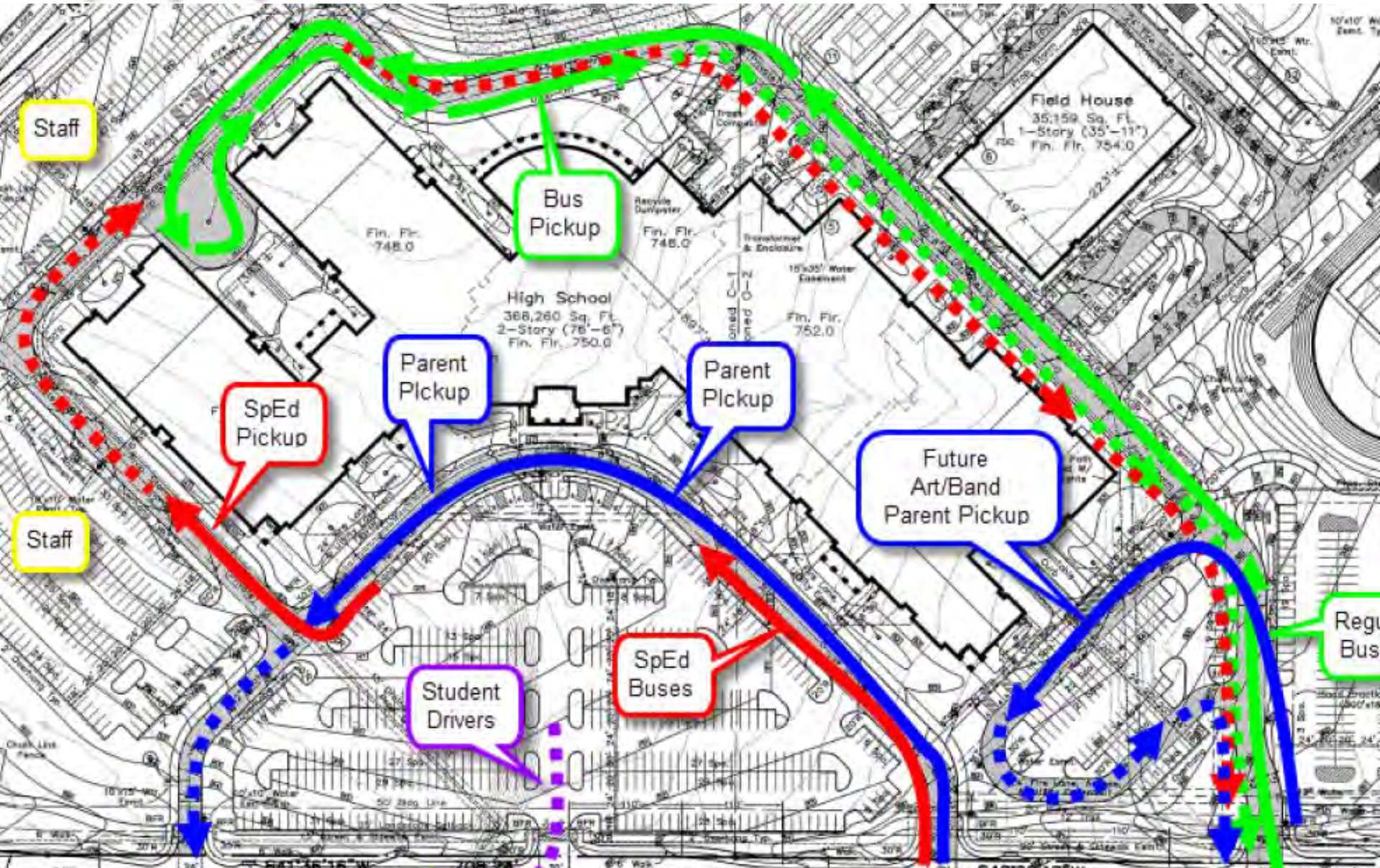




PROG



# FRISCO



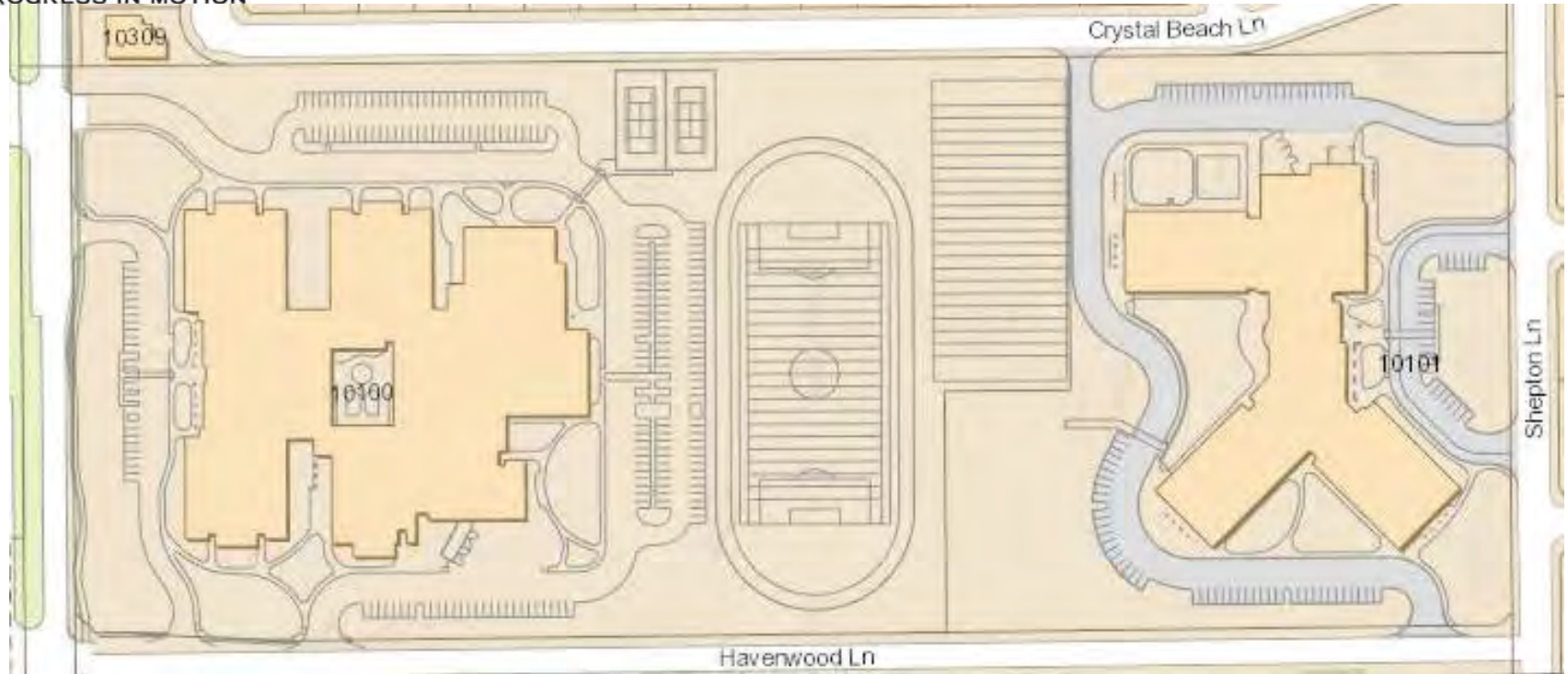
# Keys to Success

- Start from the Ground, Up
- Start from the Top, Down
- Start from the Ground, Up (every time)
- Build it into your Processes
- Include all the Players
- Avoid the Blame Game
- Lessons Learned





PROGRESS IN MOTION



Joel Fitts, P.E., PTOE  
Senior Traffic Engineer

[jfitts@friscotexas.gov](mailto:jfitts@friscotexas.gov)

972-292-5456

Questions?