



IDDE Source Tracking

CITY OF DALLAS – CASE STUDY

HILTON ANATOLE HOTEL, 1428 WYCLIFF AVE

Observing the Issue

- ▶ On May 8th 2018, while performing dry weather screening, City of Dallas personnel observed white colored water discharging from an outfall along Turtle Creek behind 1300 Wycliff Ave.



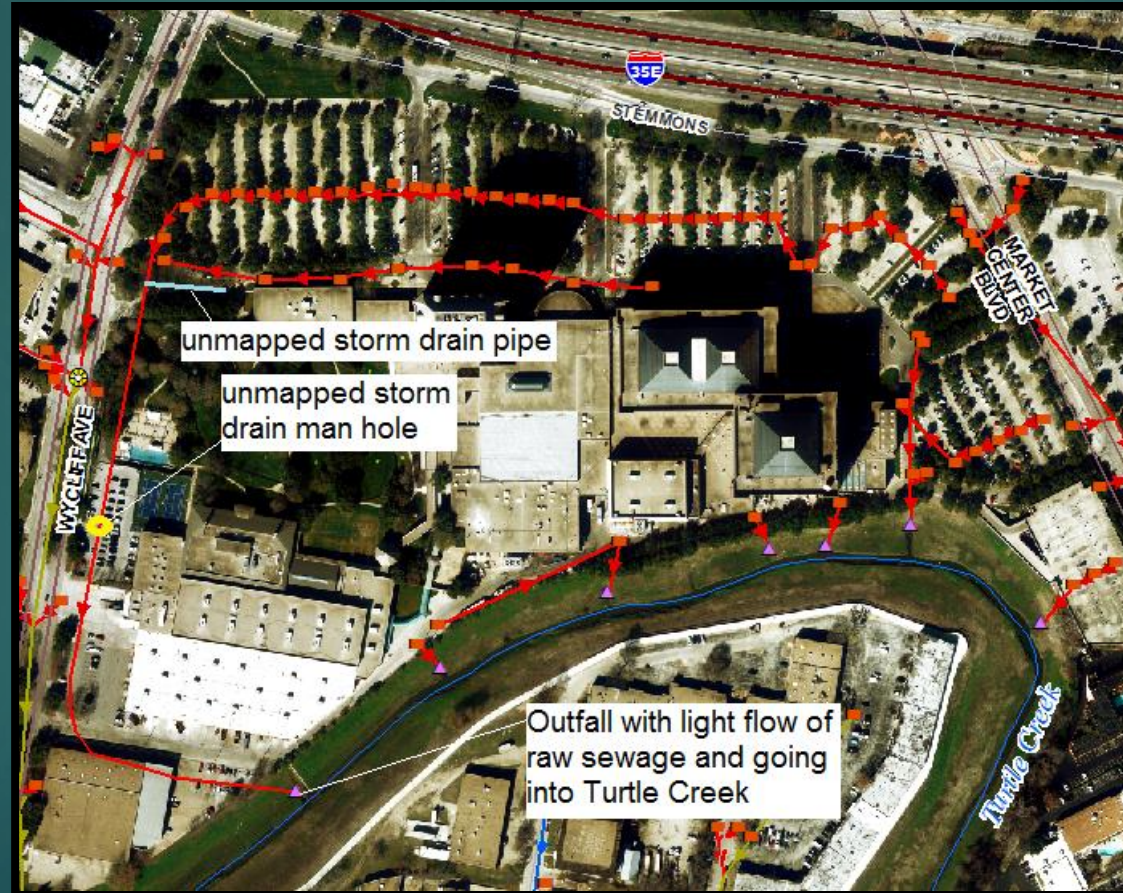
Field Sampling Results

- ▶ Dissolved Oxygen(mg/L):1.06
- ▶ pH:7.16
- ▶ Specific Conductivity(μ S/cm):1153
- ▶ Sample Temperature(C°):24.1
- ▶ Ammonia(m/L):0
- ▶ Chlorine(m/L):0
- ▶ Copper:0
- ▶ Hardness:425
- ▶ Iron:.05
- ▶ Nitrate(mg/L):1.1
- ▶ Nitrite(mg/L):.038
- ▶ Phosphorus(m/L P):.53
- ▶ TSS:62
- ▶ Turbidity:63

Tracking and investigation

- ▶ Stormwater staff reviewed drainage maps but inconsistencies with the mapping made it difficult to track discharge through storm drain lines. Inlets were visually inspected, but no signs of discharges were observed.
- ▶ A follow up was scheduled for the next day with CCTV crew to camera the lines to aid in investigation.

Tracking and Investigation



Tracking and Investigation

- ▶ CCTV crew walked the line from the outfall approximately 1350ft observing a manhole that was covered with cement from the top.
- ▶ CCTV crew also observed 42" lateral concrete pipe with signs of raw sewage coming from it. This pipe comes from in front of Hilton Anatole Hotel.
- ▶ Stormwater staff meets with hotel staff and begins dye testing on plumbing in area to see if any dye is visible in storm drain. Kitchens, bathrooms and swimming pool bar are all dye tested.
- ▶ CCTV crew attempted to camera the 42" lateral line and encountered steep inclines and debris in the line and another follow up was scheduled to continue investigation the next day.

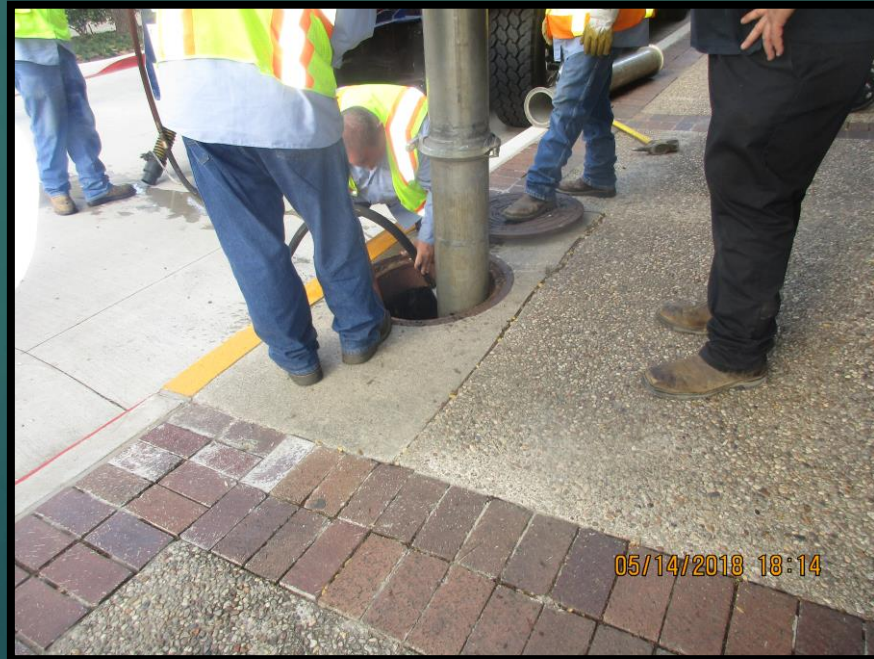
Tracking and Investigation

- ▶ DWU Waste Water division is contacted to come out and inspect the city of Dallas Wastewater lines for any possible infiltration into stormwater lines.
- ▶ The outfall is observed and still discharging a light flow of raw sewage.



Tracking and Investigation

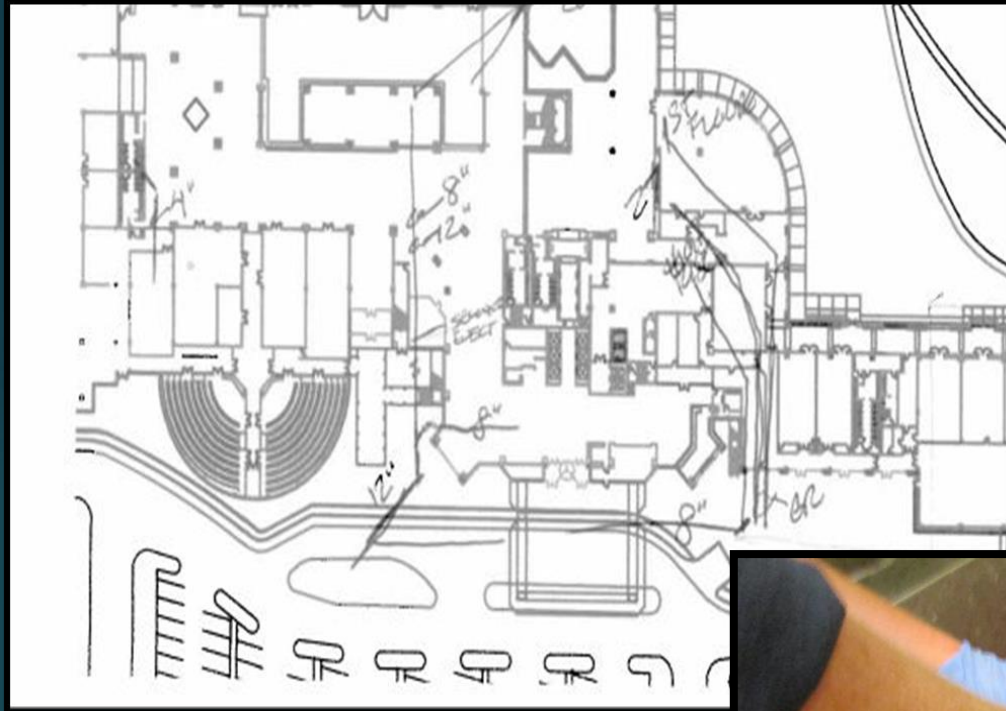
- ▶ CCTV from DWU and TWM attempted to camera 42" storm drain line but were encountering issues getting camera into line form inlet boxes.
- ▶ Hotel staff shared blueprints of plumbing with Stormwater staff but they were not conclusive.
- ▶ Grease traps in the front parking lot were dye tested for possible infiltration but no dye was observed in the storm drain line.
- ▶ CCTV noticed food particles in 42" line so all kitchens and break rooms were dye tested on the first floor of the hotel but the dye showed up on the grease traps and not in the storm drain.



Tracking and Investigation

- ▶ Investigation continued with CCTV able to camera the 42" line from the opposite direction observing that there was a heavier presence of white colored sewage at an area near another set of grease traps.
- ▶ Dye testing was performed on the grease traps, but no dye ever showed up in the storm drain.
- ▶ Another set of plumbing blueprints were provided by hotel staff.
- ▶ There was a kitchen inside the building near where the heavier sewage was noted by CCTV, but dye testing was performed on all sinks and drainpipes and no signs of dye tests were found in storm drain line.

Tracking and Investigation



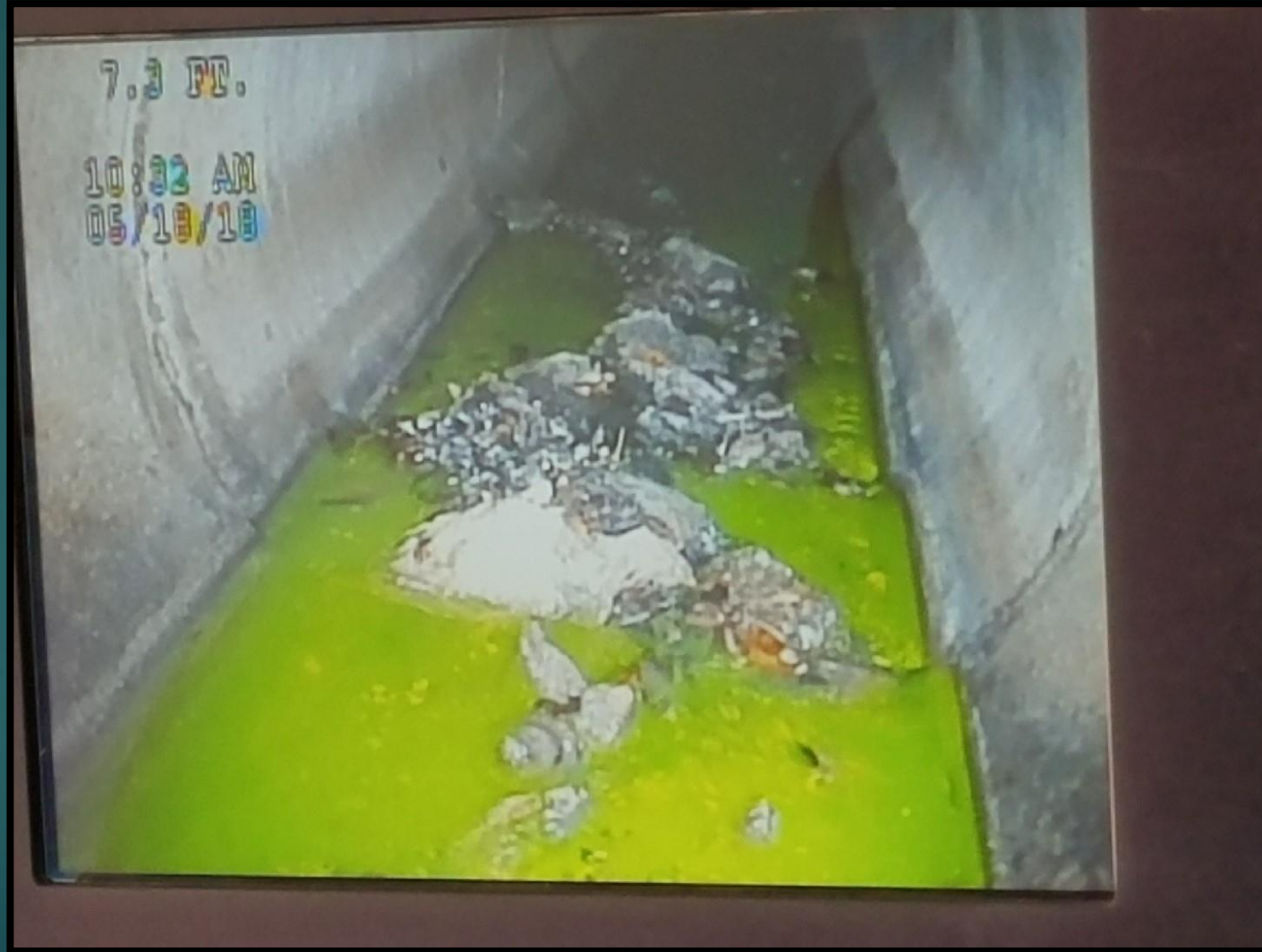
Tracking and Investigation

- ▶ On 5/17 Stormwater staff spoke with Hotel staff and informed them that the city would continue to cover all available options to find source of discharge, but hotel staff will ultimately be responsible for finding source of discharge since it was tracked back to their property.
- ▶ One more follow up was scheduled for 5/18

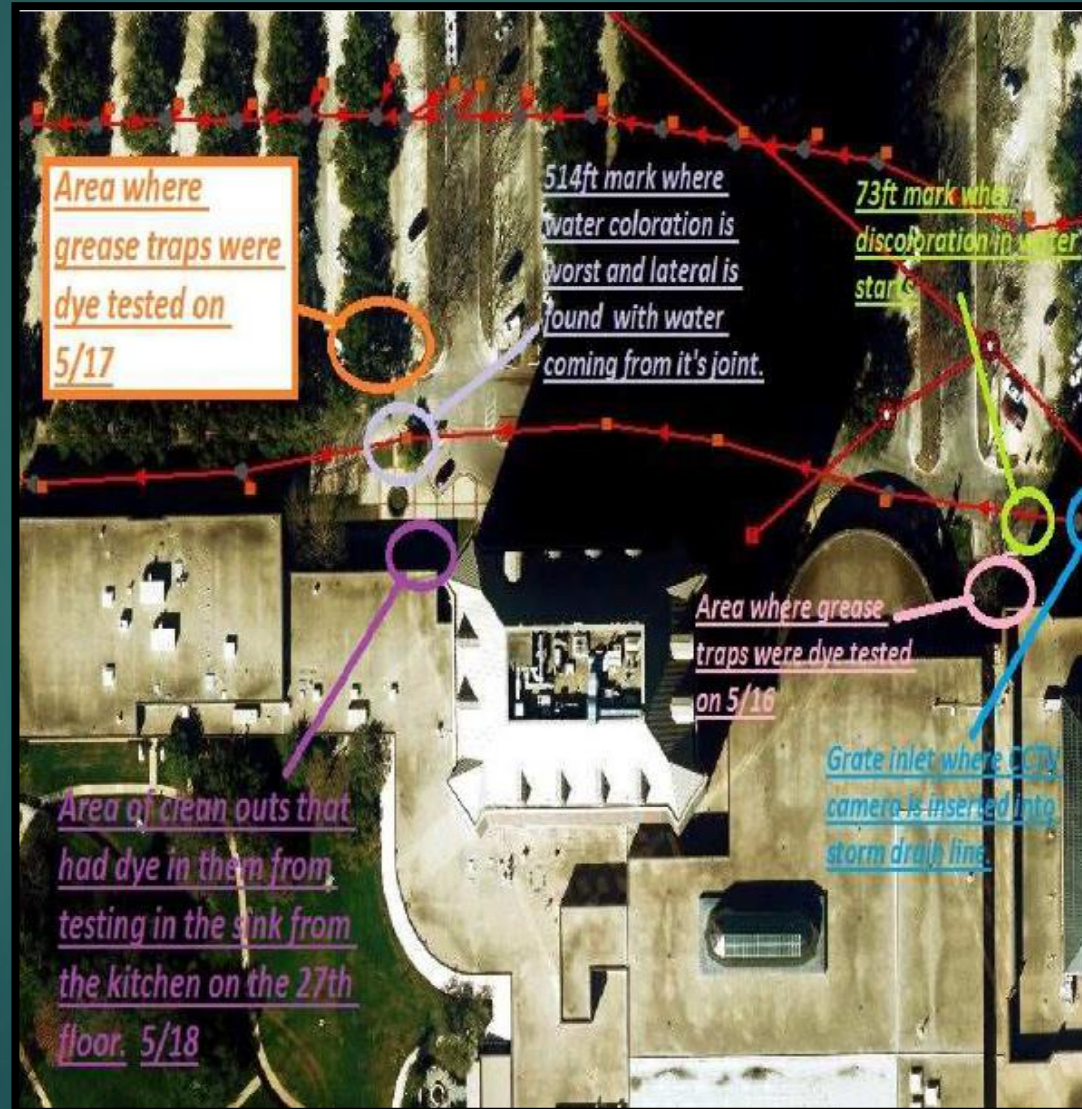
Tracking and Investigation

- ▶ Further investigation led Stormwater to perform dye testing inside a small kitchen located on the 27th floor of the hotel.
- ▶ CCTV observes dye entering the storm drain. Dye was observed in one of the cleanouts next to the building as well.
- ▶ Hotel staff was informed of the findings and issued an NOV for the illicit discharge

Tracking and Investigation



Map of Investigation



Follow Up

