

# Industrial Illicit Discharge Case Study

Dominique Eades  
Sr. Environmental Specialist

## Where and when it happened...

- On Saturday, October 23, 2021, an emergency spill call was received on the City of Fort Worth Environmental hotline about a possible discharge in a creek
- The investigator went to the location and confirmed the reported discharge to the creek
- A traceback investigation was conducted due to several industrial facilities in the area

# Traceback Investigation

- Investigator noticed the water was murky, with small metal pieces and no smell
- The flow was steady and was not coming from an outfall
- The investigator traced the current flow to a nearby industry

# Unnamed Tributary





## How it happened...

It was discovered that the industry had cut a hole in the back of the property to allow contaminated water discharge into the creek behind the facility







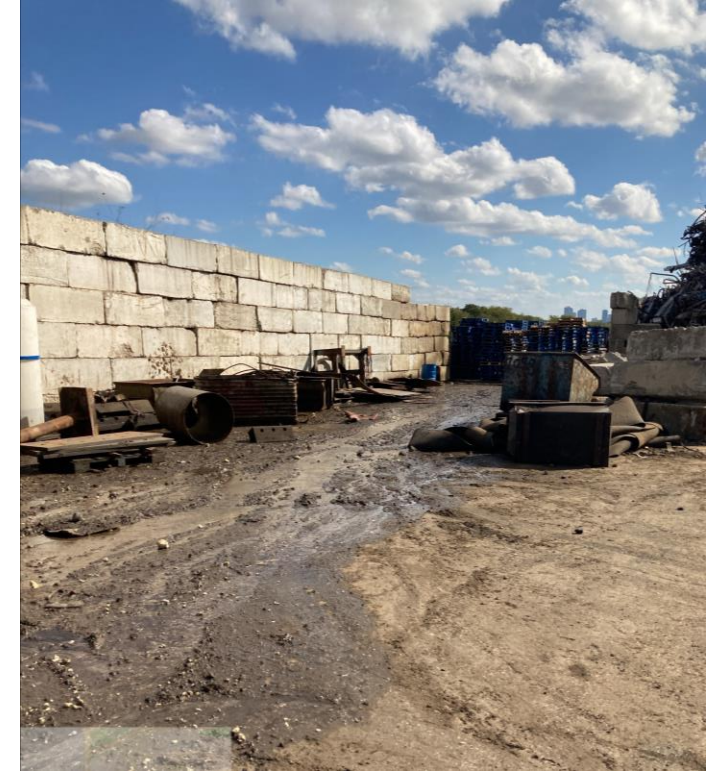


# Why it happened...



- Metal crushing machine had a leak
- Facility had contaminants on the ground such as metal materials and sediment
- The flowing liquid picked up the contaminants as it was leaving the property
- BMPs were installed but proved to be ineffective to stop the flow from discharging off property





The contaminated water entered the creek creating an illicit discharge



# Illicit Discharge Enforcement

- NOV (Notice of Violation) was issued to the facility contact person on site
  - Required to stop the illicit discharge immediately
  - Remediate the issue within 5 business days
  - Will return to speak with operations manager
- Returned Tuesday, October 26, 2021 to issue Operations Manager a citation for Illicit Discharge and verify remediation steps
- Performed an industrial facility inspection and SWPPP review while on site
- During walkthrough inspection, it was observed the hole had been filled to prevent any further discharge to creek



# Follow Up Investigation Results





# Questions?

Dominique Eades  
Sr. Environmental Specialist  
[dominique.eades@fortworthtexas.gov](mailto:dominique.eades@fortworthtexas.gov)

