



NCTCOG PRESENTATION

OpenStreetMap and NCTCOG: Exploring the Possibilities

GIS Regional Meeting | 5.16.2024

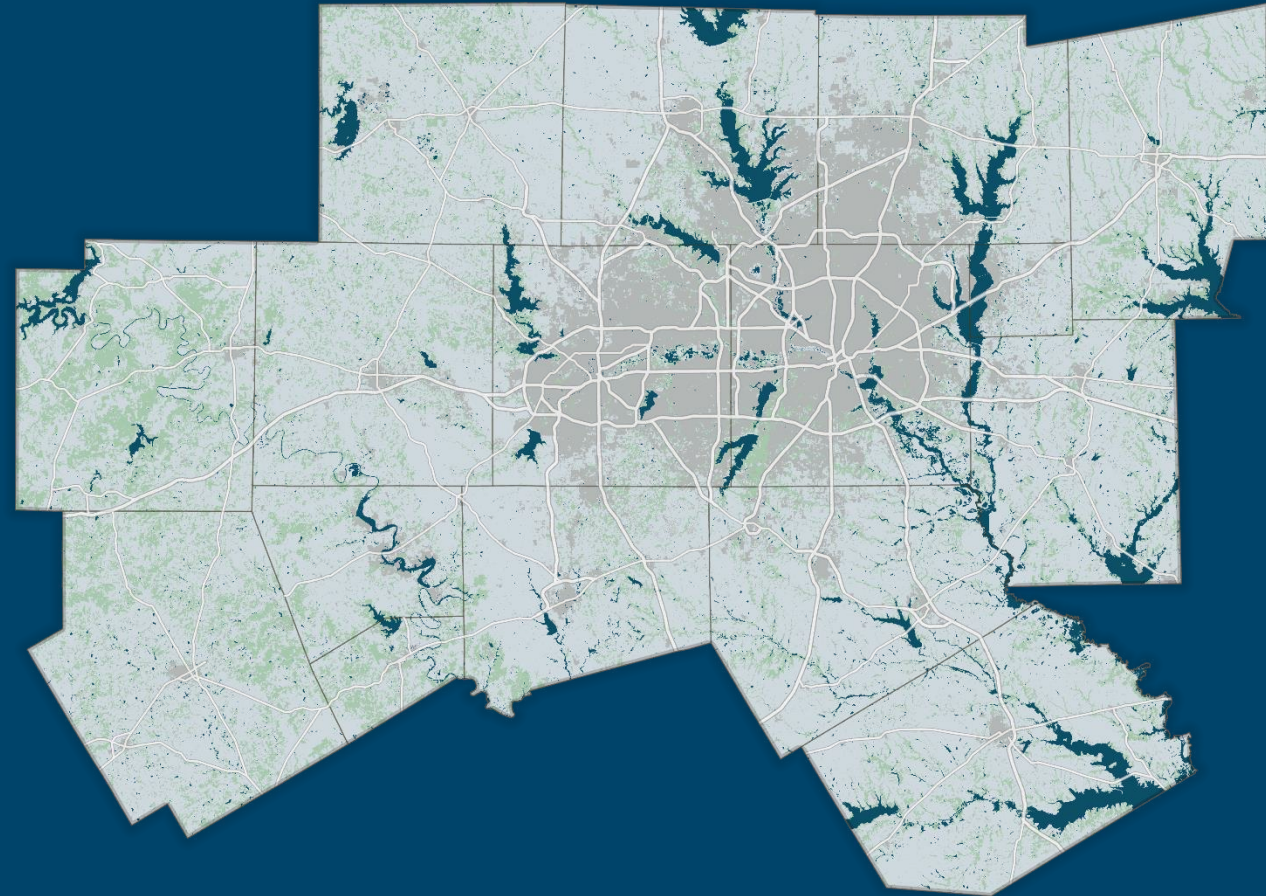
NCTCOG Transportation



Long and short-range transportation planning for North Central Texas



Provide regional coordination for transportation planning activities, especially for projects that impact multiple jurisdictions



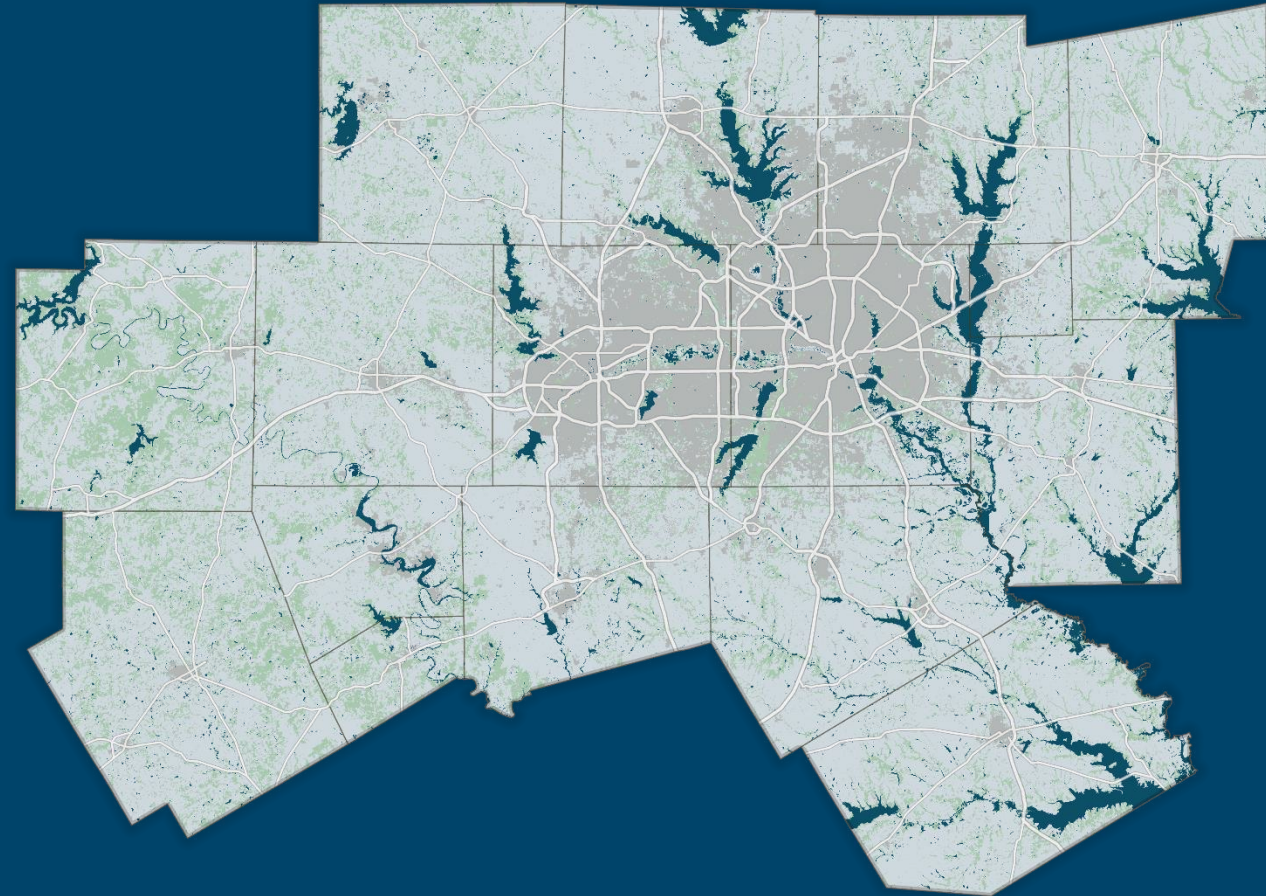
NCTCOG Transportation



Direct certain streams of federal transportation funding to transportation projects around the region



To support these planning activities, we create, maintain, and analyze a lot of data on the region's transportation system



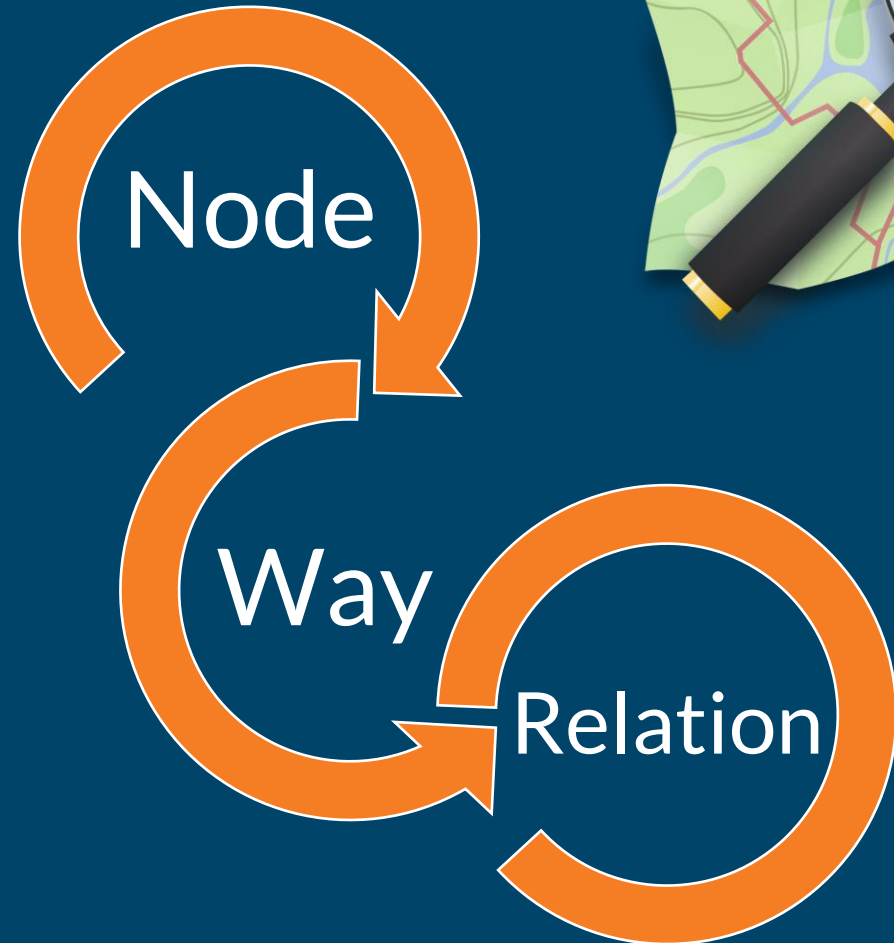
OpenStreetMap

Open-source street mapping platform ran by user community

Wealth of data curated by local communities

Data used in numerous third-party applications

Uses tag-system to attribute data to features



OpenStreetMap Data Structure



Nodes

Individual points representing features – Stop signs, signalized intersections, railroad crossings



Ways

Lines which are made up of nodes connected together – Road segments, transit lines, railroads



Relations

Nodes or ways related together in some way – Full route of IH 35W, cities, time zones



The background of the slide is a photograph of the interior of a bus, showing rows of seats and overhead handrails. The entire image is overlaid with a semi-transparent blue filter. The text is centered horizontally and vertically on the slide.

NCTCOG and OpenStreetMap

NCTCOG and OpenStreetMap

Our Uses for OSM Data

- Bicycle-pedestrian features
- Understanding traffic control devices
- OSM IDs when relating to third-party platforms
- Conflation activities
- Roads layers in vector basemaps



NCTCOG and OpenStreetMap

Consumption of OSM Data

- Updated internal datasets based on features from OSM
 - All-way stops, signalized intersections, and at-grade railroad crossings
- Created dataset of OSM roadways to be used in tandem with third-party applications

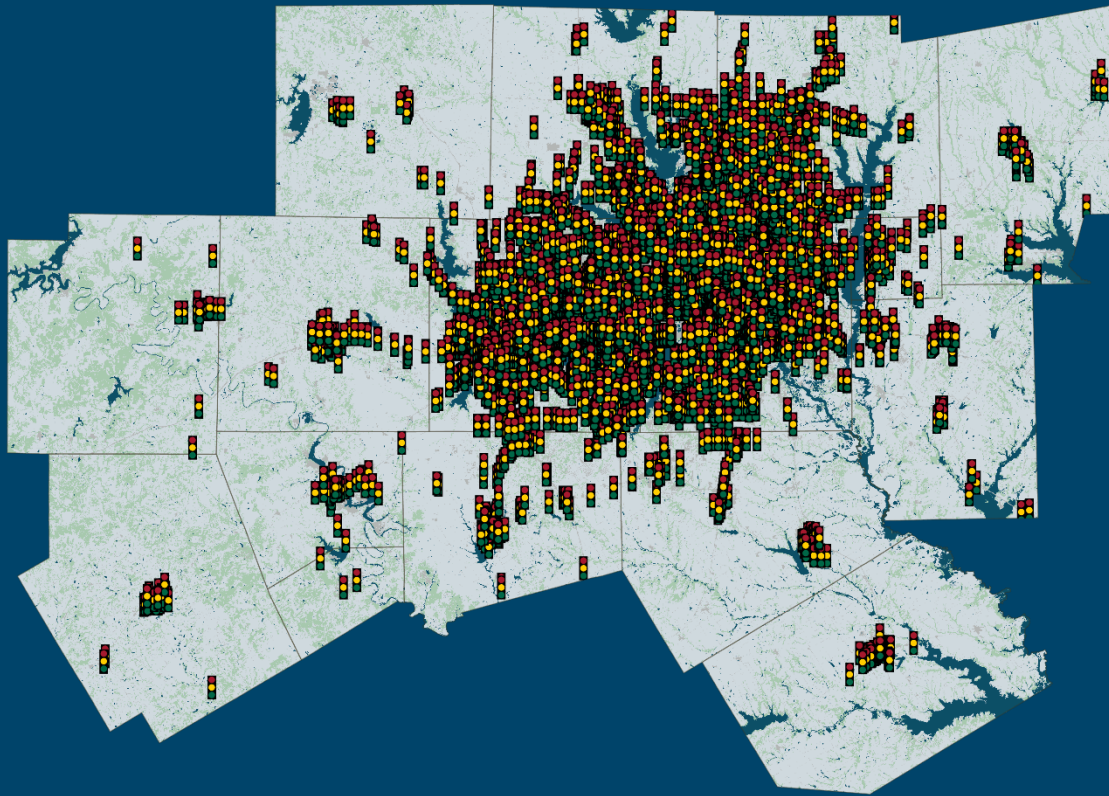
Contribution to OSM Data

- Manual edits to stop signs, signalized intersections, and railroad crossings
 - Removing and adding over 1000 features
- Automated edits to roadway network
 - Updated tags on over 600 elements

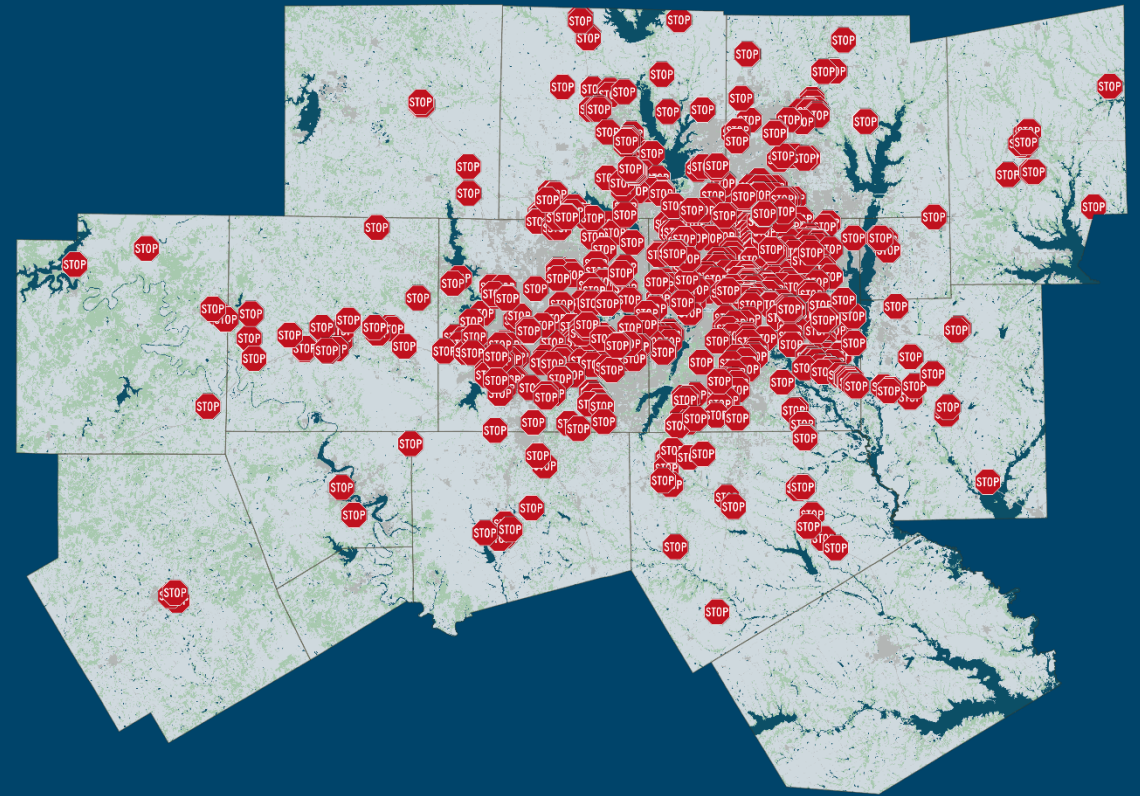


NCTCOG Datasets Enriched by OSM

Signalized Intersections

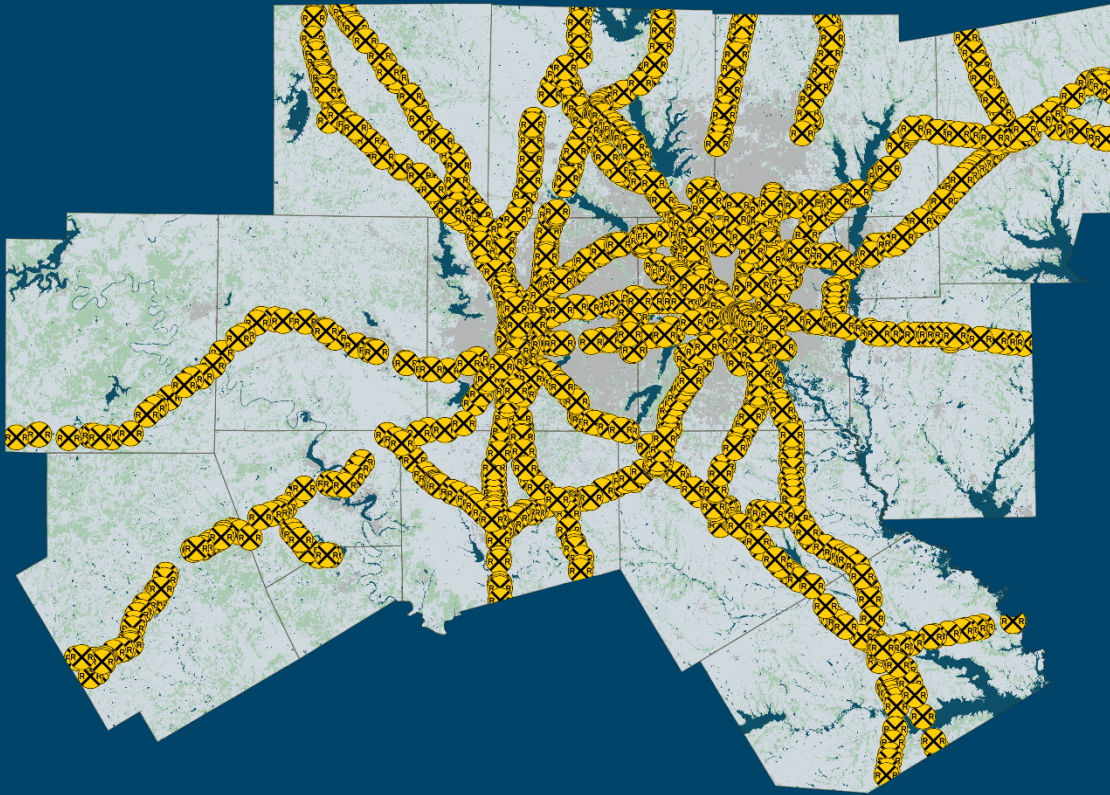


All-Way Stops

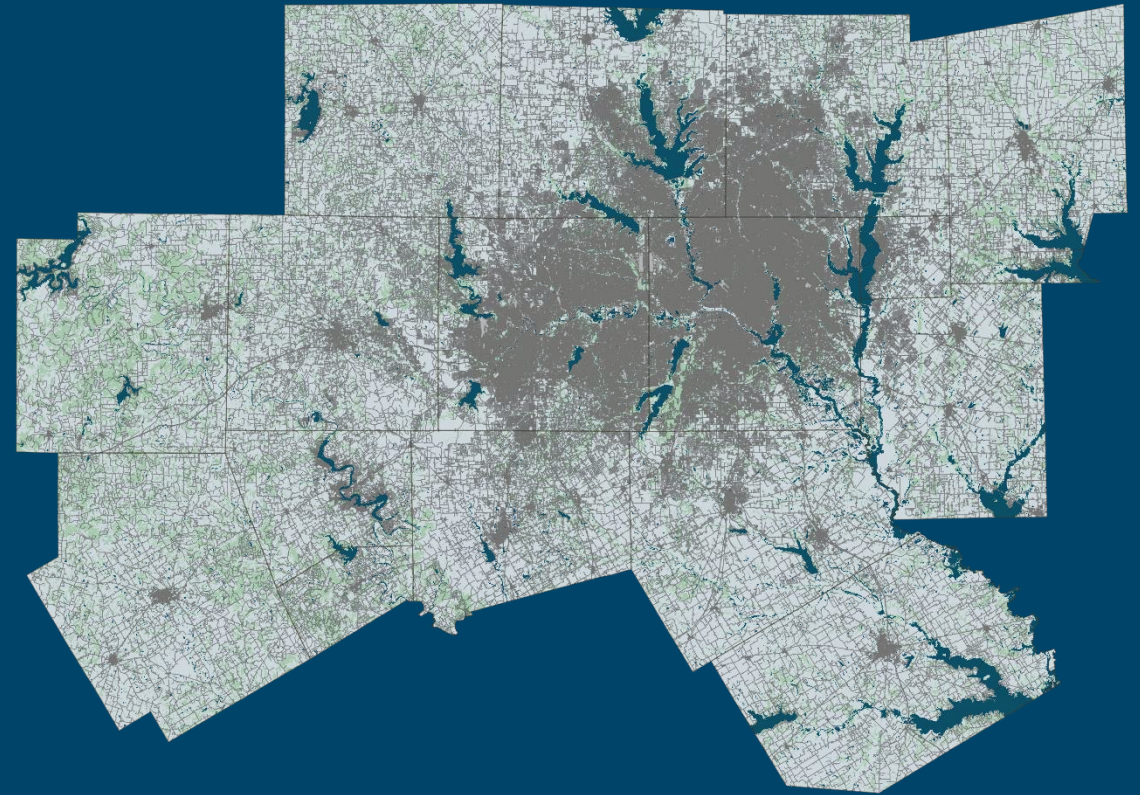


NCTCOG Datasets Enriched by OSM

At-Grade Railroad Crossings



OSM Roadways



The background of the image is the interior of a bus, showing rows of seats and overhead handrails. The entire image is overlaid with a semi-transparent blue filter. The text is centered horizontally and vertically.

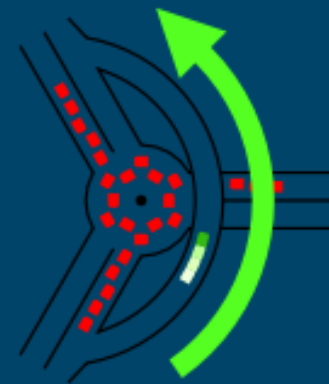
How to Interact with OpenStreetMap

Consume OSM Data

Build queries in [Overpass Turbo](#)

Create python scripts that feed queries into [Overpass API](#)

Parse through data to get appropriate tags and feed geometry to desired output



Overpass
API



Contribute to OSM Data



Manual

Use online editing applications to manually change features



Automated

Use the [OSM API](#) to create an application or python script which updates features



Community Forum

For larger or more complex edits, make sure to consult the [community forum](#) to ensure edits are made for the benefit of the community



Open Discussion



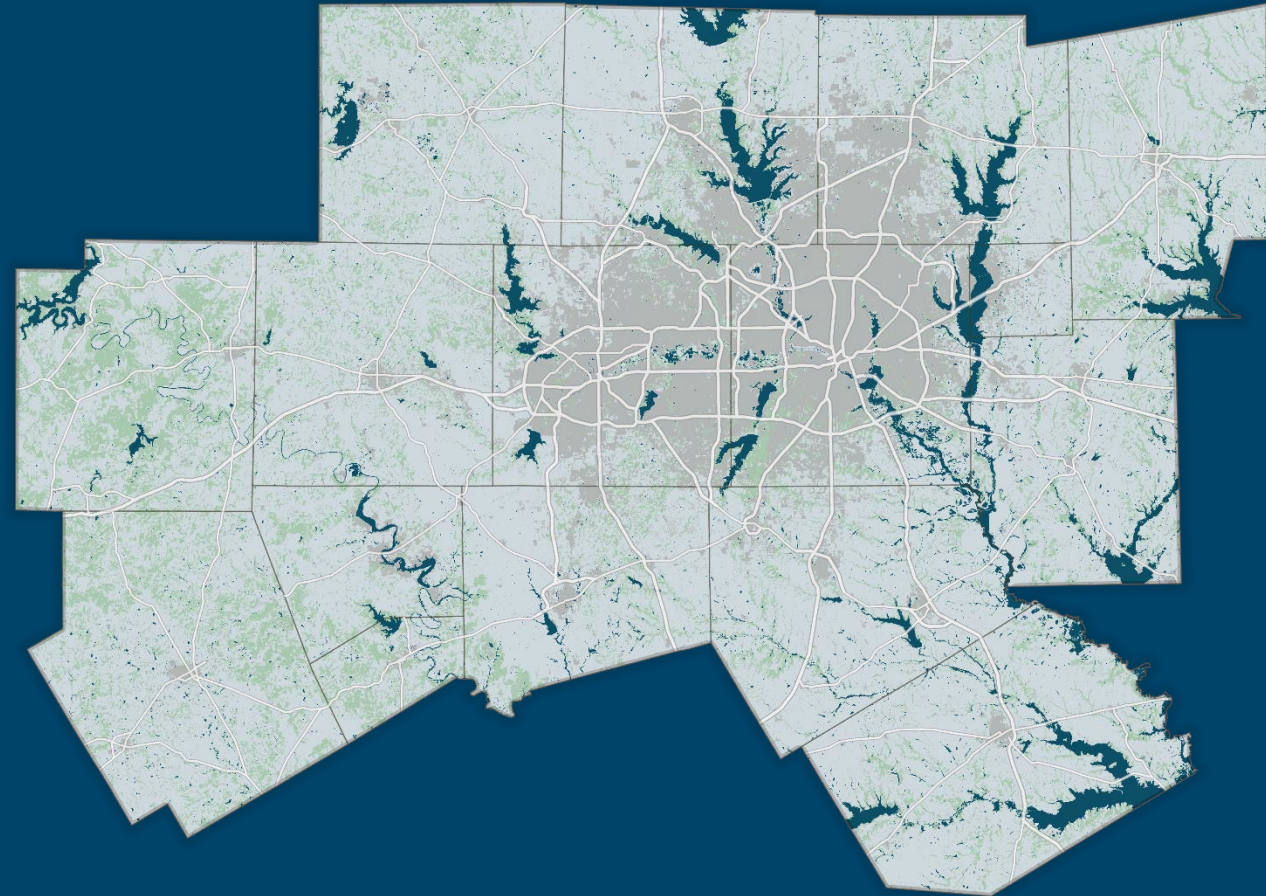
How has your organization utilized OpenStreetMap?



Does your organization use any third-party applications which utilize OSM data?



Is there any data you believe may be worthwhile for contributing to the platform?



CONTACT US

Cabe Cupit

GIS/Data Solution
Analyst

jcupit@nctcog.org

James McLane

Transportation Information
Systems Manager

jmclane@nctcog.org

