



Untamed, Unrivaled



# 502d Air Base Wing & Joint Base San Antonio Readiness and Environmental Protection Integration (REPI) Overview



**Mr. Richard King**  
**502 ABW / Community Mission Integration**



# Agenda



Untamed, Unrivaled

- REPI Program Overview
- JBSA REPI Projects
  - Camp Bullis
  - Randolph
  - Lackland
- Sentinel Landscape



# What is REPI



Untamed, Unrivaled

## Readiness and Environmental Protection Integration (REPI)

- Administered by the Office of the Secretary of Defense (OSD)
- Key tool for combating encroachment that can limit or restrict military training
- Protects military missions by helping remove or avoid land-use conflicts near installations and addressing regulatory restrictions that inhibit military activities

## How it works

- REPI uses of buffer partnerships among the Military Services, private conservation groups, and state and local governments, authorized by Congress at 10 U.S.C. § 2684a.
- These win-win partnerships share the cost of acquisition of easements or other interests in land from **willing sellers**
- Preserve compatible land uses and natural habitats near installations and ranges that helps sustain critical, at-risk military mission capabilities.

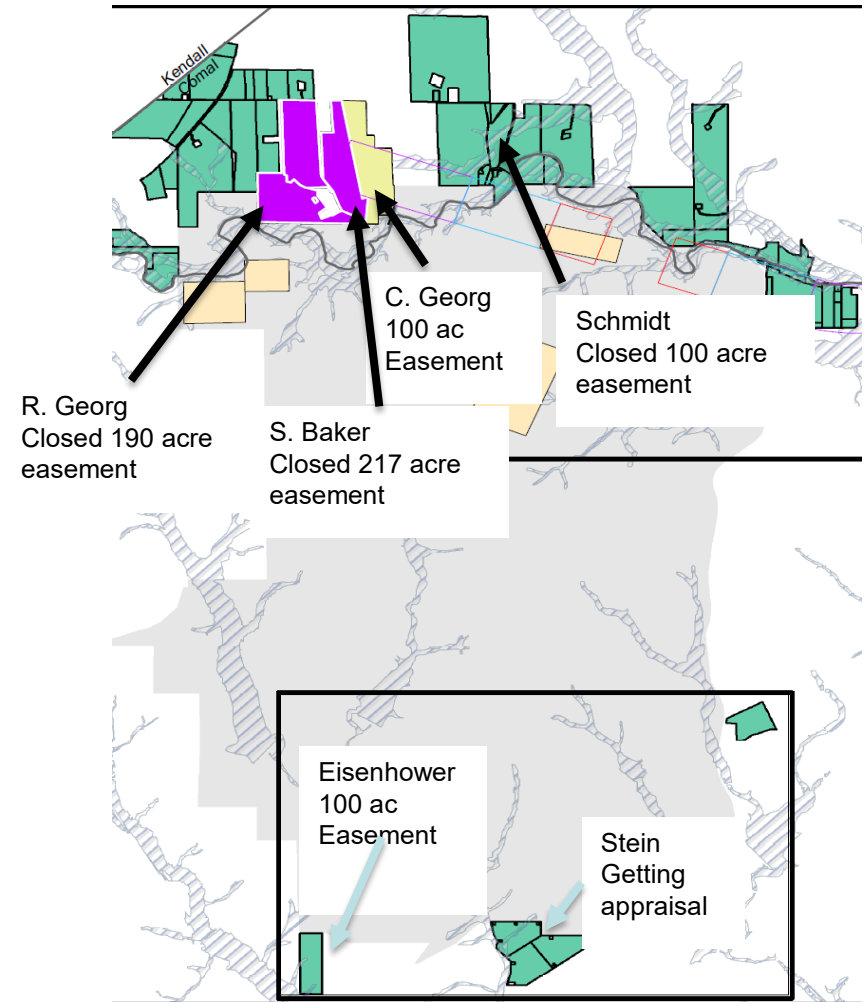


# JBSA-Camp Bullis REPI Project



Untamed, Unrivaled

- **Compatible Lands Foundation Transactions**
  - R.Georg (Closed 190 acre easement)
  - S. Baker (Closed 217 acre easement)
  - Schmidt (Closed 100 acre easement)
- REPI Challenge partnered with Edwards Aquifer Protection Program on Scenic Loop (Closed 156 acre easement)
- FY 25 REPI Challenge with San Antonio River Authority to study flood mitigation upstream on Cibolo Creek





# JBSA-Randolph



Untamed, Unrivaled

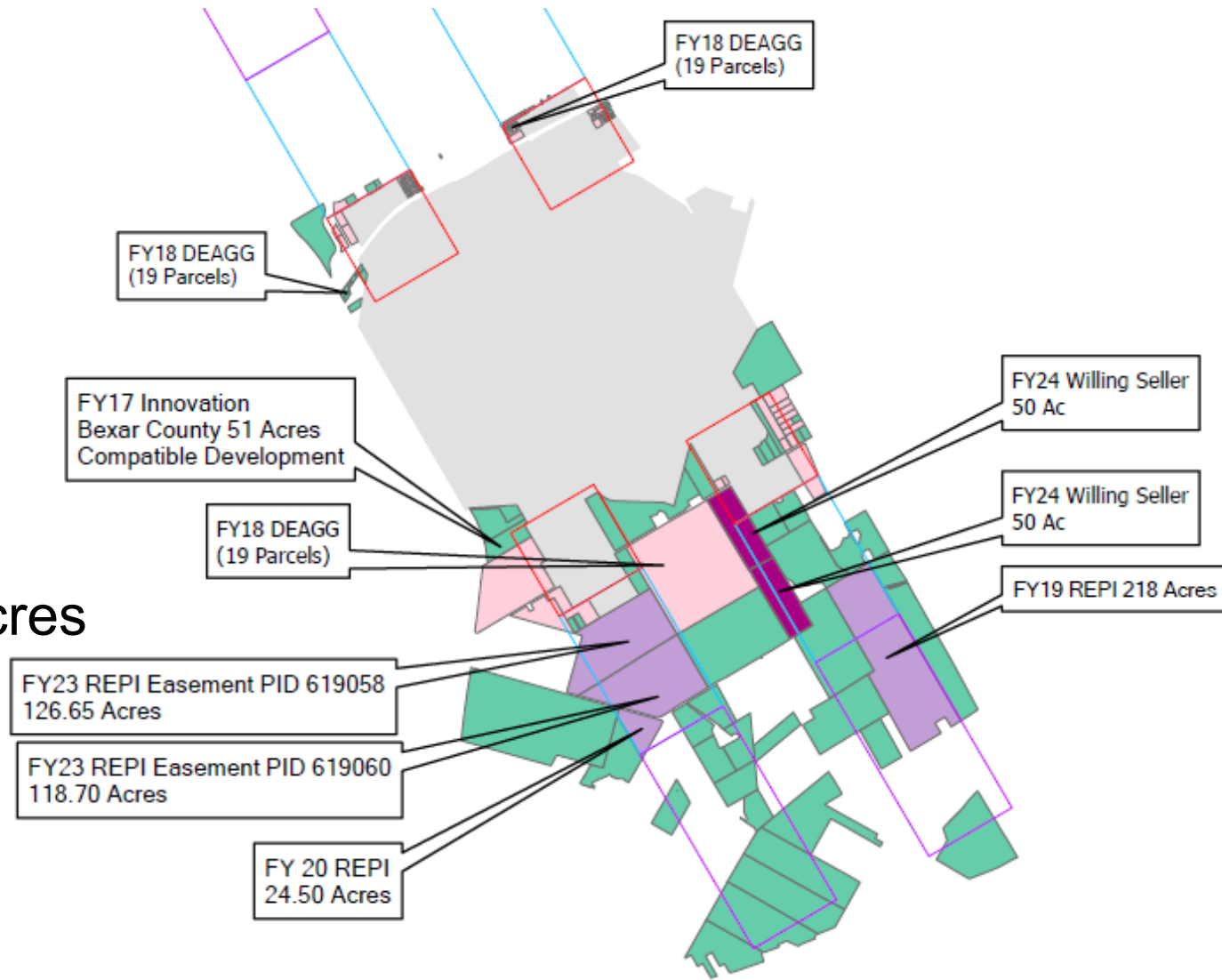
## ■ GSA Transactions

Greaves 218 acres

Hartman 24.5 acres

Buchholtz 244 acres

FY24 Schwab 100 acres





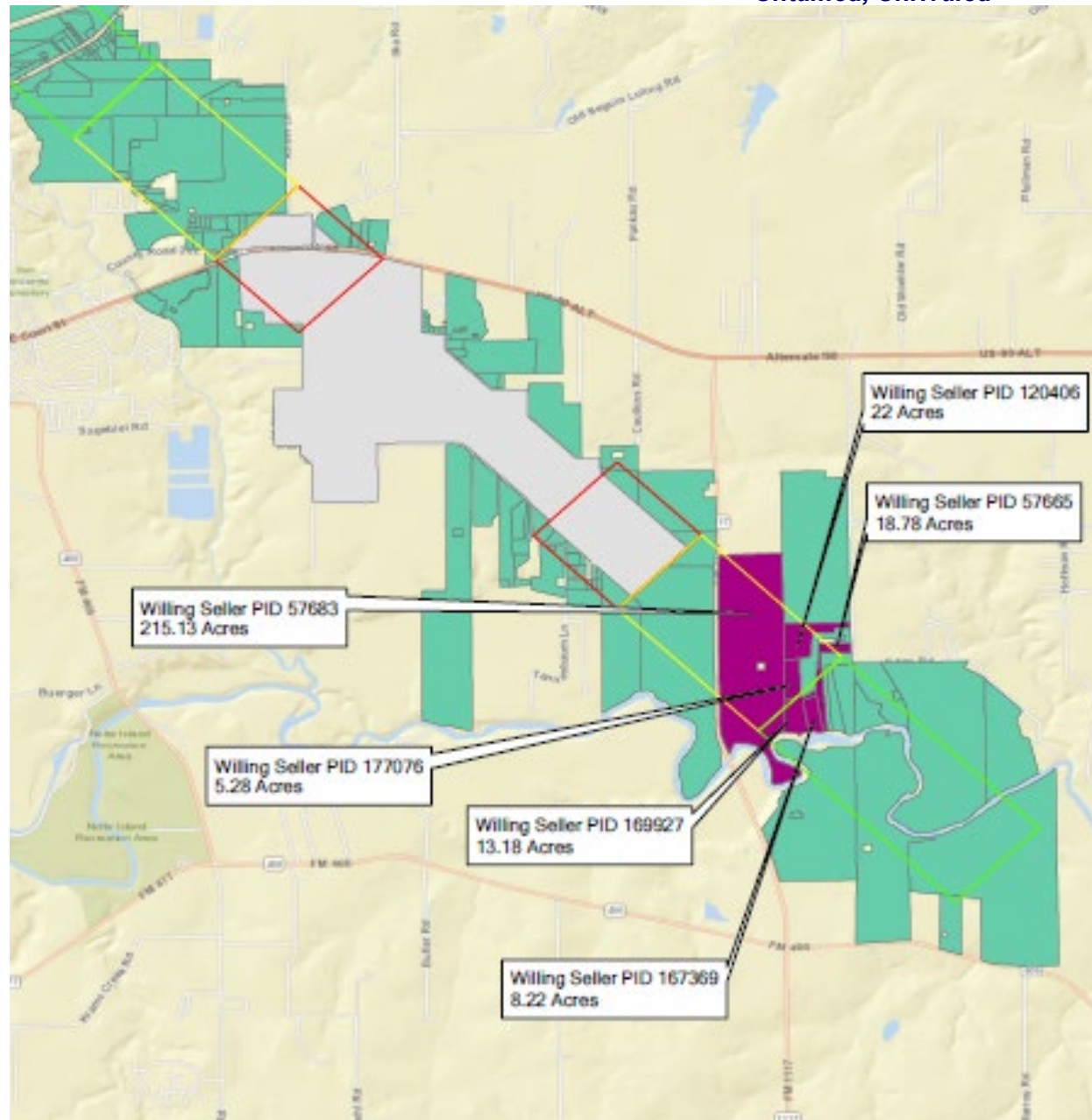


# JBSA-Seguin Aux Field



Untamed, Unrivaled

- **CLF FY24 Transactions**  
Swope 115 acres  
Seidenberger 74 acres



**JBSA Vision: The Premier Installation in the Department of Defense!**



# JBSA-Lackland

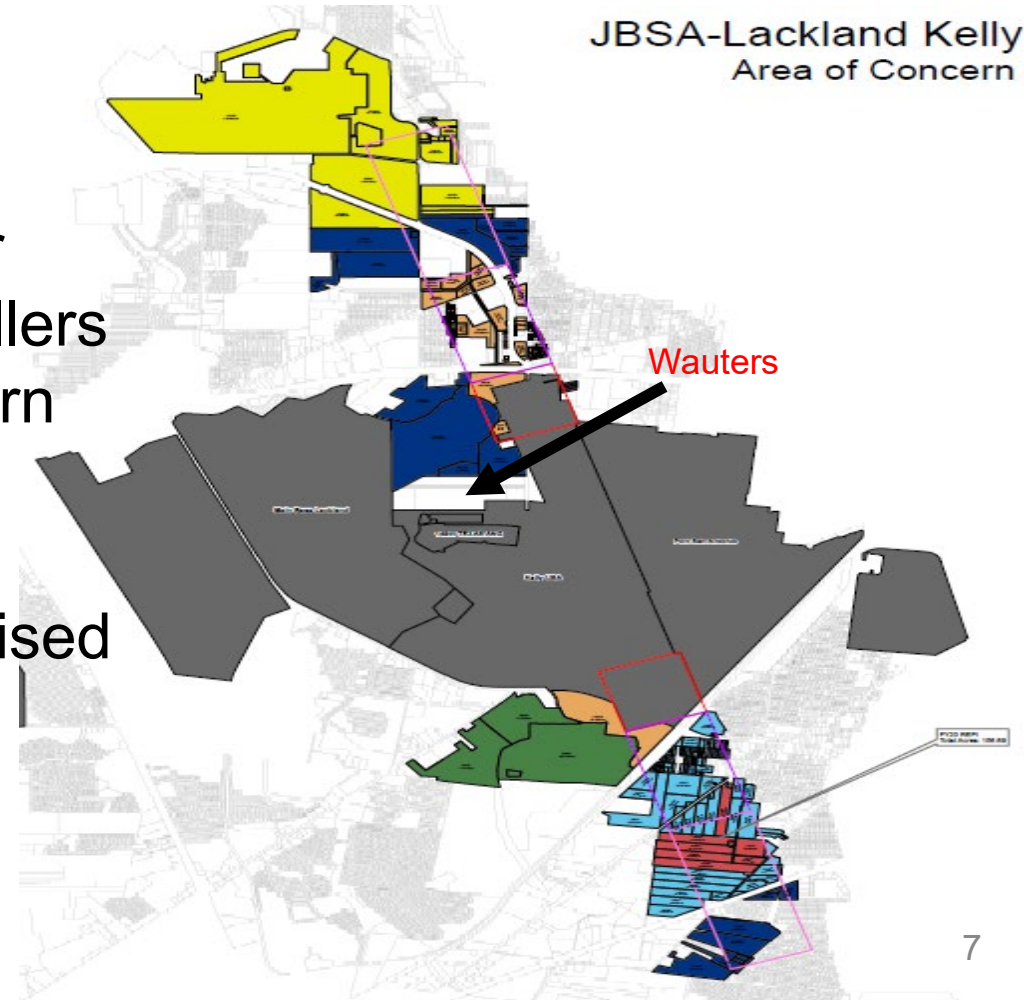


Untamed, Unrived

## JBSA-Lackland REPI Project

### ■ Green Spaces Alliance (GSA) Engagements

- Working with San Antonio River Authority for leads on willing sellers along Leon Creek in the southern APZs
- Wauters parcel has been appraised and working Phase II ESA for underground fuel tank





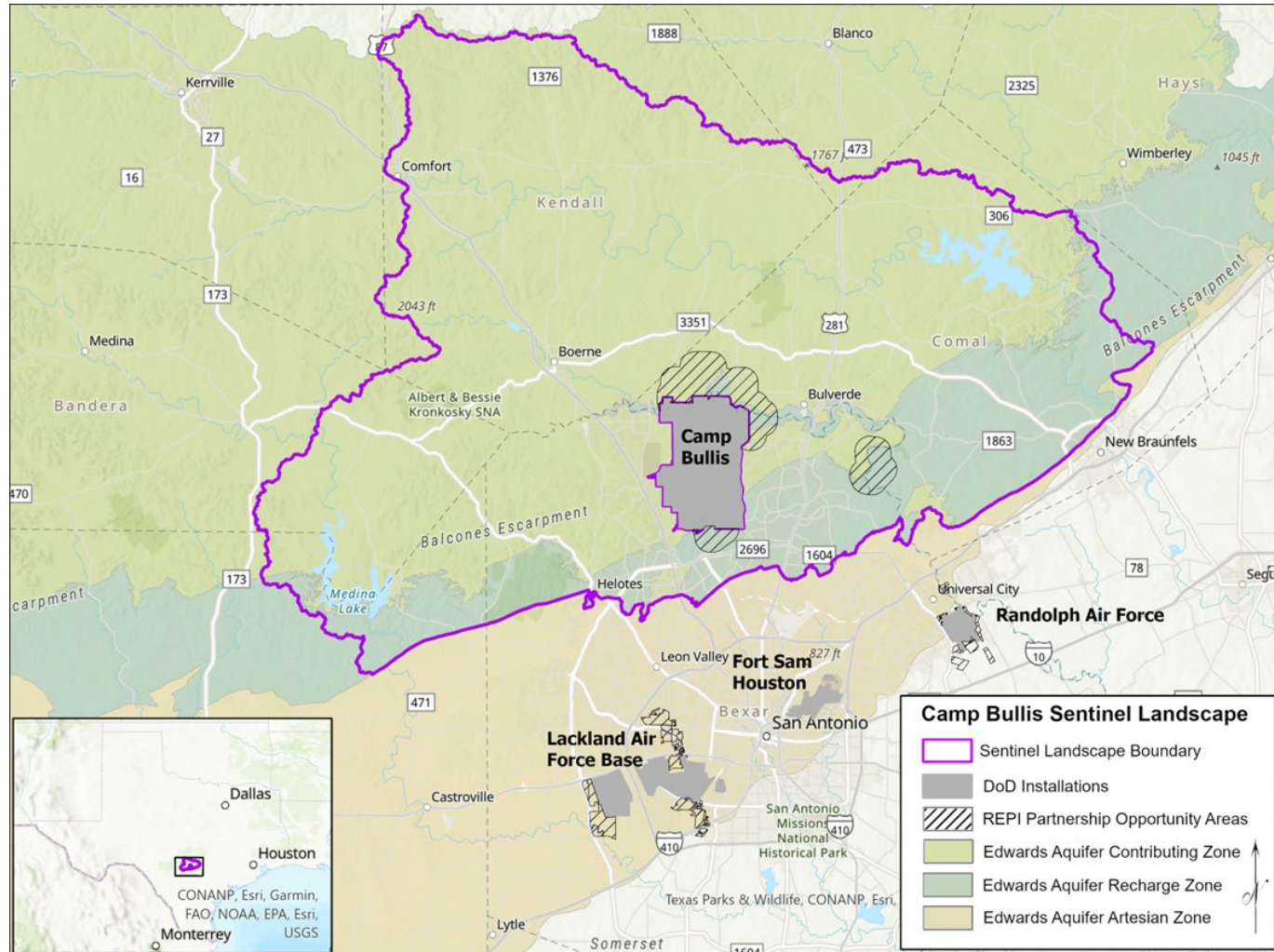
# Camp Bullis Sentinel Landscape



*Untamed, Unrivaled*

Program managed by:

- Department of Agriculture (USDA)
- Department of Defense (DoD)
- Department of the Interior (DOI)



Sources: REPI, EAA, AACOG





**Untamed, Unrivalled**

# Questions