

FORT WORTH EVANS & ROSEDALE URBAN VILLAGE

Updated: 2017

FACT SHEET

Project: Fort Worth - Evans & Rosedale Urban Village (2009)

Type: Historic District, Infill, Redevelopment

Regional Partners



North Central Texas
Council of Governments



Key Elements:

- Housing standards and guidelines
- Prototype house plans

Findings:

This urban village plan identified 17 prototypical housing plans for the redevelopment of aging, historic housing in the Evans/Rosedale area of Fort Worth. The plan details typical housing plans and general building standards for redevelopment and new development. These standards and guidelines provide affordable new and infill housing options to create a sustainable pedestrian-oriented urban neighborhood.

- Housing market assessment
- Pre-approved home plans
- Urban design standards

Unique Takeaways:

The plan team and a team of architects developed specific pre-approved housing plans for the redevelopment and reconstruction of the aging housing structures in the neighborhood, as part of the Urban Village Development Program in the City of Fort Worth. The plan report details all of the prototypical housing plans that are pre-approved and ready for construction.

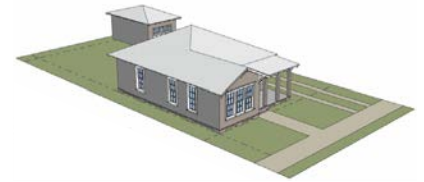
- Coordination with architecture firm to develop housing plans

Implementation Status:

These guidelines were used in discussions that led to changing zoning regulations in and around the Evans & Rosedale Urban Village to a form-based code.



T3-H Historic
Neighborhood Zone



Typical Massing of a Building in the T3-H Zone



Single-Family Detached Prototypes for the T3-H Zone



T3-T Transition Zone



Typical Massing of a Building in the T3-T Zone



Single-Family Attached Prototypes for the T3-T Zone