

NCTCOG TRANSPORTATION
DEPARTMENT

Roadway Corridor & Subarea Studies

REGIONAL FREIGHT ADVISORY COMMITTEE

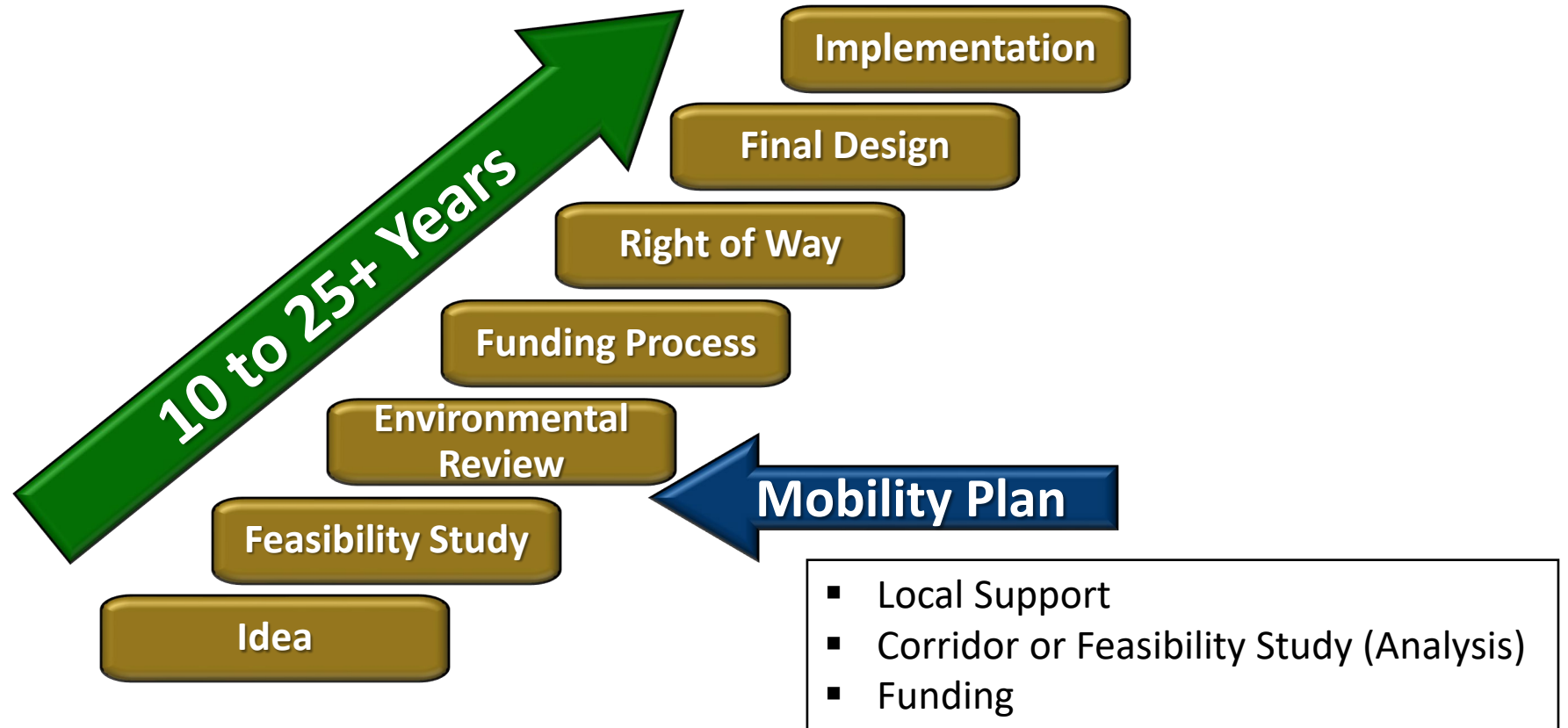
5.9.2023

SAMUEL SIMMONS, SENIOR TRANSPORTATION PLANNER

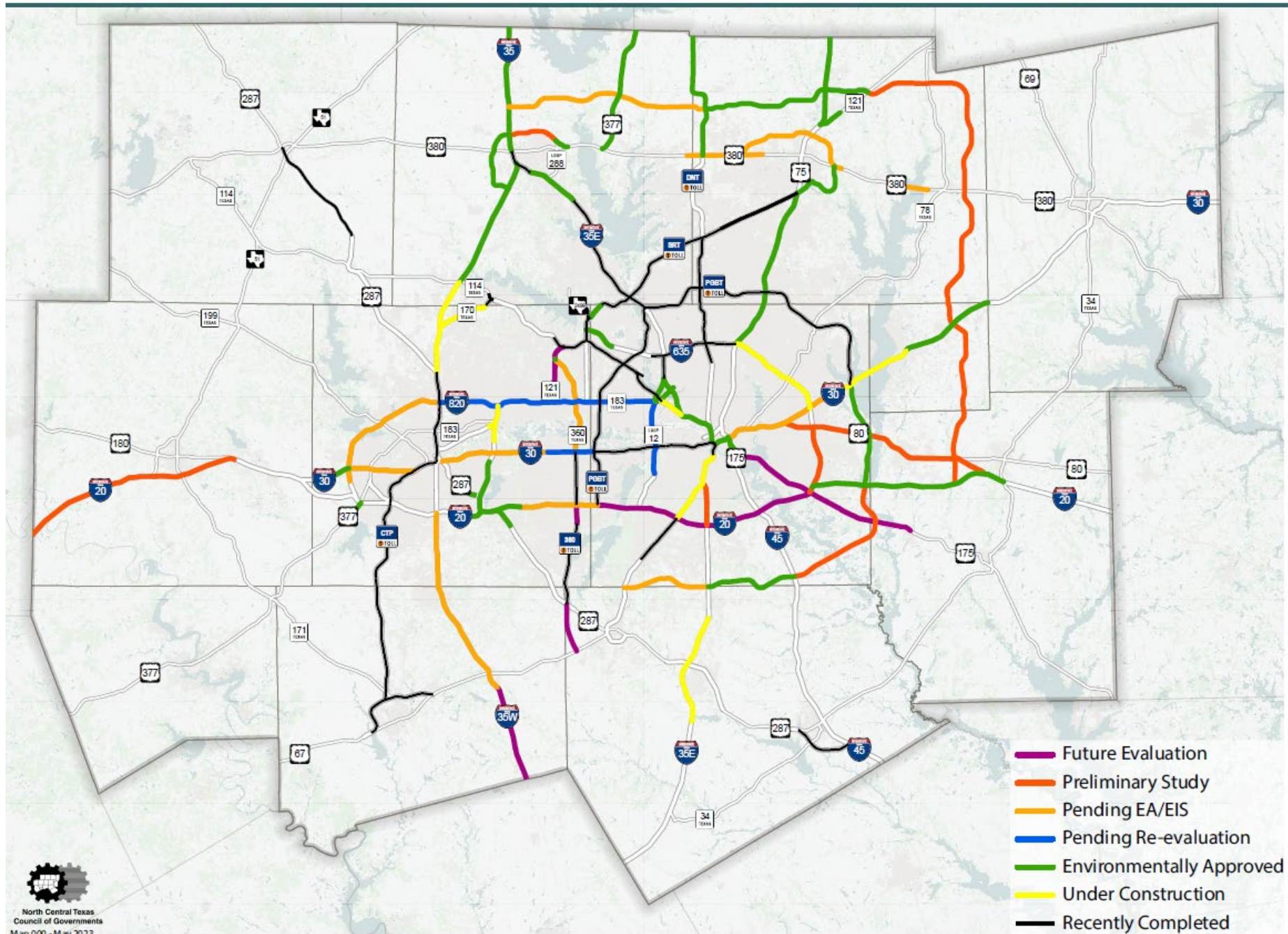
NCTCOG Roadway Team Core MPO Functions

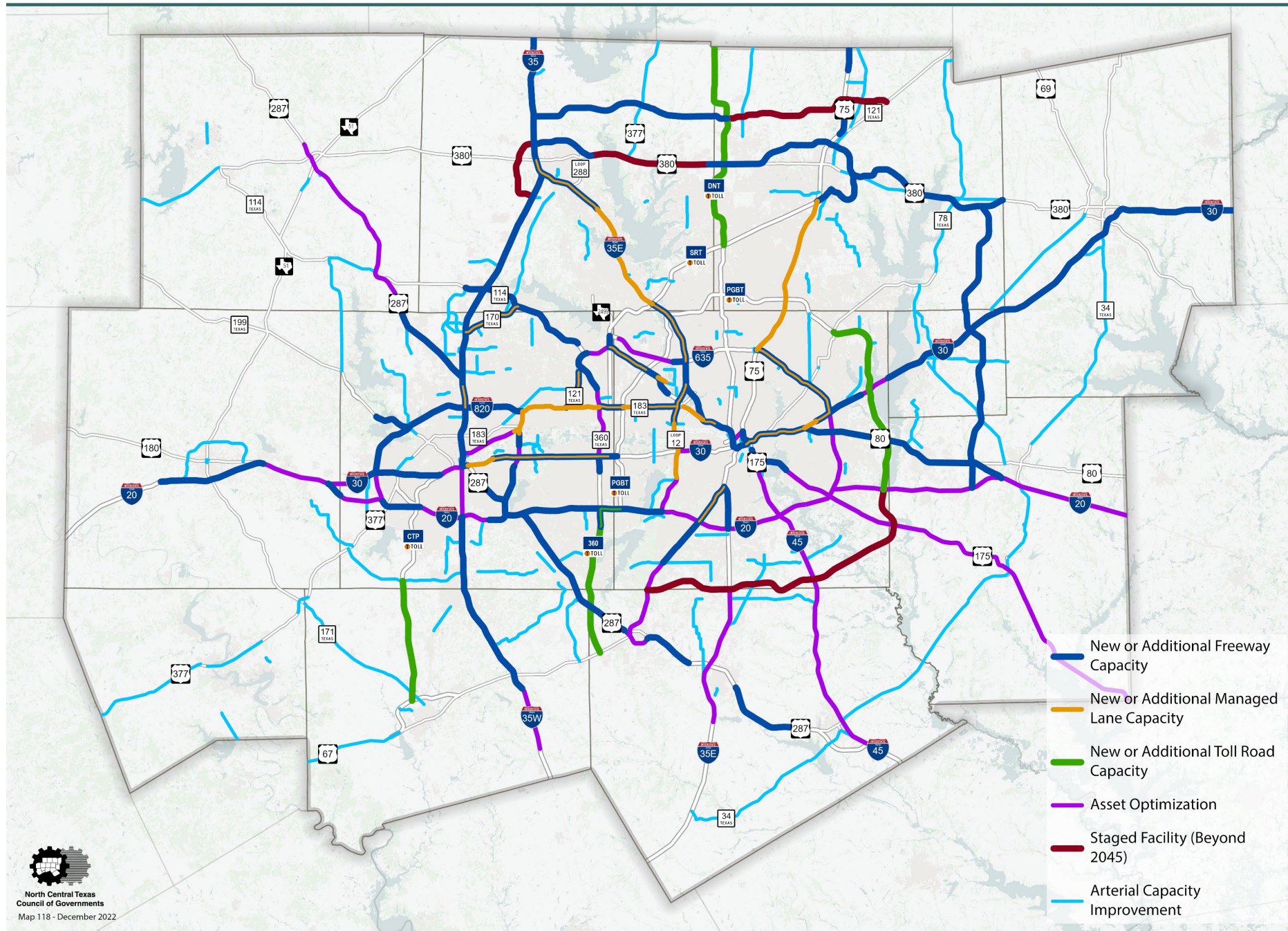
- Coordination of planning activities with regional transportation partners
- Monitor status of environmental documents
- Ensure project consistency with the Metropolitan Transportation Plan
- Provide assistance to local governments in support of comprehensive and/or thoroughfare planning efforts
- Technical Assistance Program
- Roadway Network Maintenance

Transportation Project Process



Corridor Status Map





Project Consistency

Design Concept

- Location
- Facility type
- Project limits
- Scheduled Let Date

Design Scope

- Length
- Number of lanes
- Signalization
- Other Specific Information

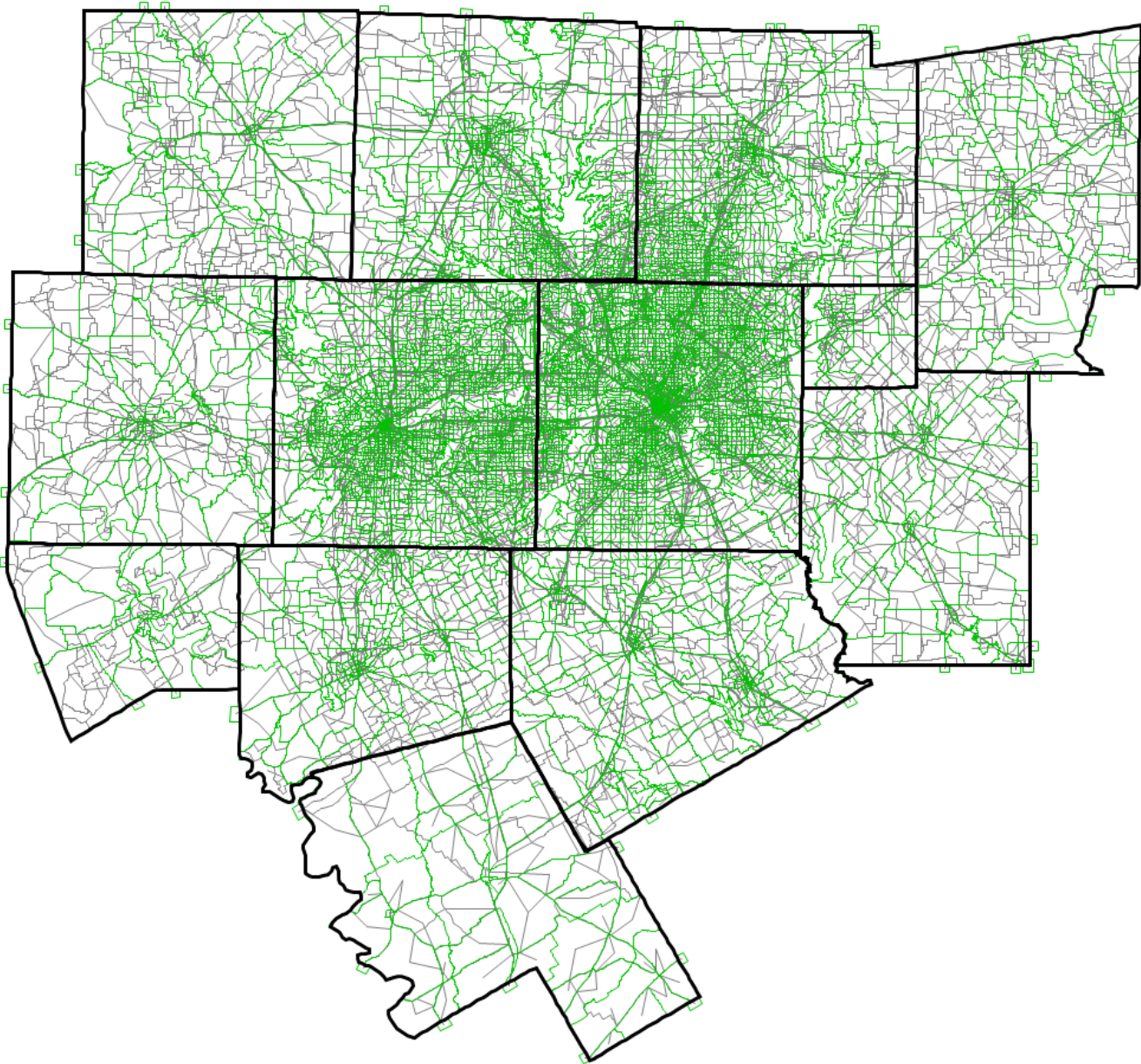
Project Cost

- Federal
- State
- Local
- Public/Private Partnerships

Current Active Projects

- IH 30 Corridor Study
- SH 360 Extension Corridor Study
- Denton County Outer Loop Corridor Study
- Kaufman County Outer Loop Feasibility Study
- Rockwall County Outer Loop Feasibility Study
- PGBT East Branch Corridor Study
- Northwest Highway Feasibility Study
- Dallas North Tollway Major Investment Study
- City of Cedar Hill Thoroughfare Plan
- City of Fort Worth Subarea Study
- Southwest Airlines Planning Study
- IH 30 Fair Park Area Street Study
- Forest Hill Drive Project
- Oak Farms Corridor Study

NCTCOG Regional Travel Demand Model



- **4- Step, Trip-Based Model**
- **TransCAD Software**
- **Launched New Platform in 2022**
- **13 Counties**
- **5,352 Traffic Analysis Zones**
- **45,000+ Roadway Links**
- **Traffic Forecasts**
- **Select Link Analysis**
- **Performance Measures**

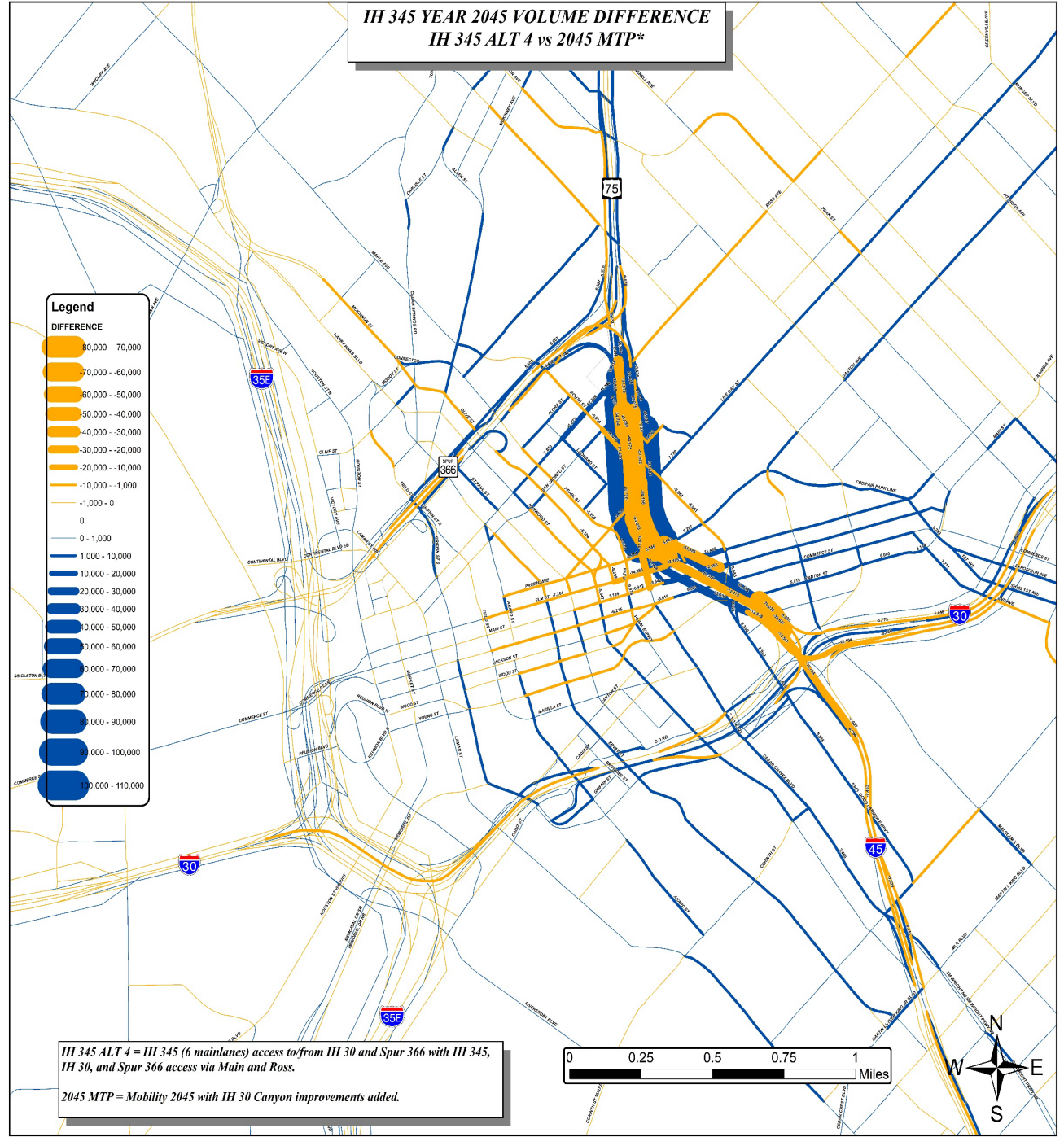


KEY TAKEAWAYS

- I-345 connects I-45 to US 75 through downtown Dallas
- Primarily a bridge structure
- Carries 180,000 vehicles daily
- 84% of traffic is destined beyond downtown*
- 16% of traffic is destined to downtown



IH 345 YEAR 2045 VOLUME DIFFERENCE
IH 345 ALT 4 vs 2045 MTP*





Study Area

IH 20

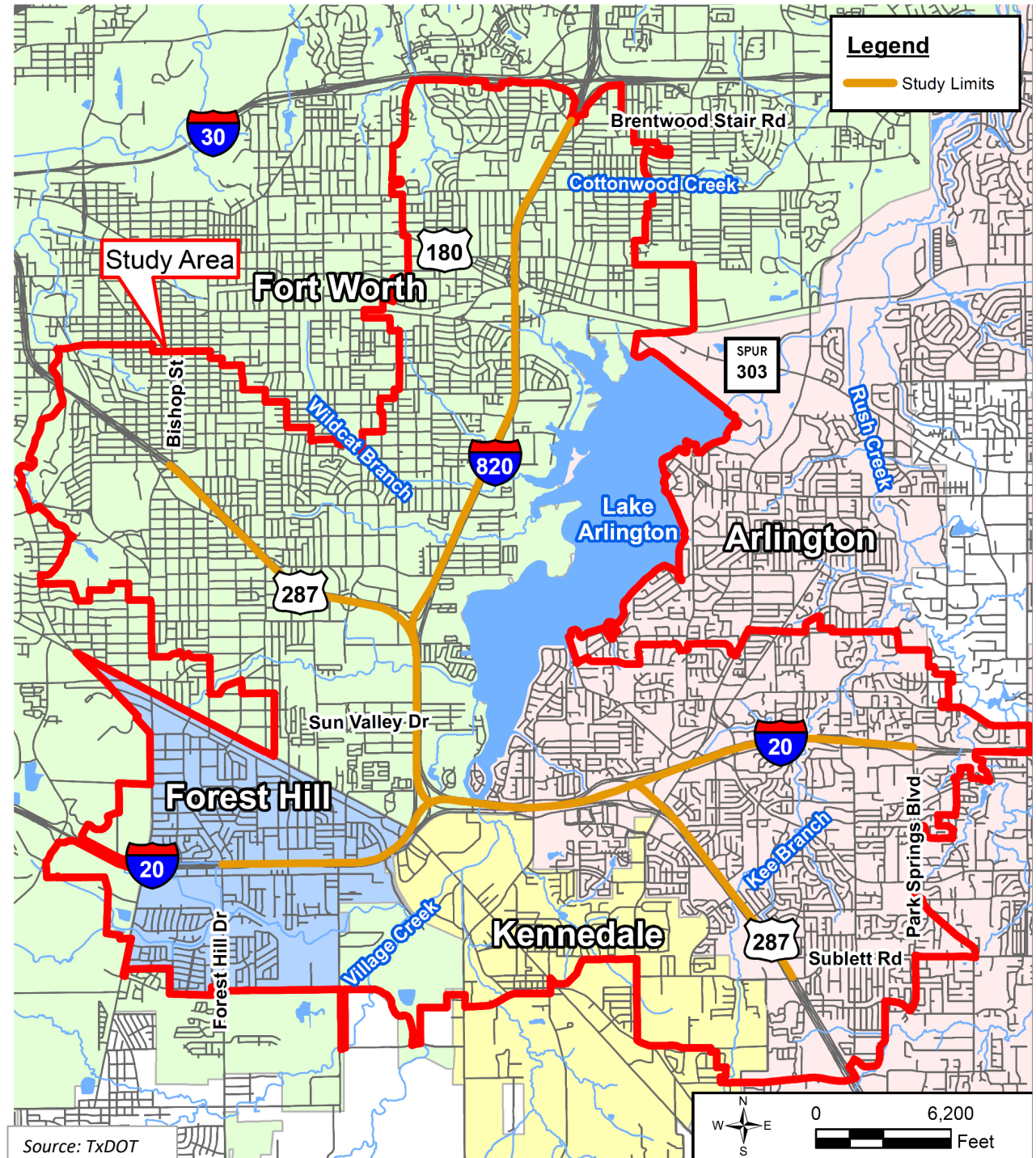
– From Forest Hill Drive
To Park Springs Boulevard

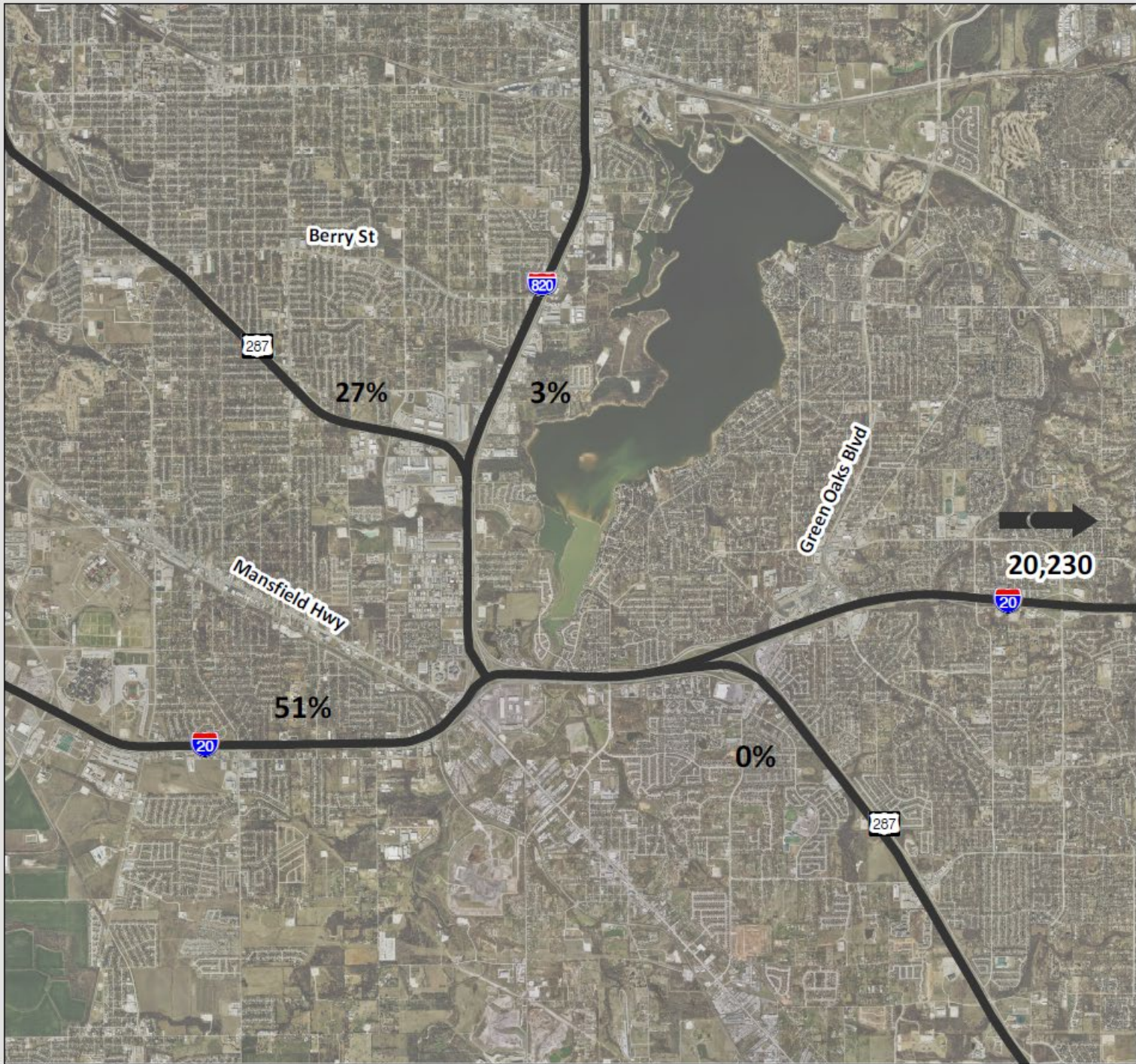
IH 820

– From IH 20
To Brentwood Stair Road

US 287

– From Bishop Street
To Sublett Road





Southeast Connector

Mobility 2040
 Select Link Analysis
 IH 20 | IH 820 | US 287

On IH 20 Eastbound PM

- IH 20 Eastbound - 20,230
- US 287 Northbound - 0
- IH 20 Eastbound - 10,397
- US 287 Southbound - 5,470
- IH 820 Southbound - 541



September 2017

WISE COUNTY

Long-Term Roadway Recommendations

- 1 FM 1810 - Realignment and US 287 Intersection Improvement
- 2 US 287 - Reopen Frontage
- 3 US 287 - Complete Frontage Connections
- 4 US 287 - Construct Frontage
- 5 FM 730/CR 4481/CR 4679 - Feasibility Study for Connecting Corridor
- 6 SH 114 - Safety and Capacity Improvements
- 7 SH 114/FM 51 Intersection Improvement
- 8 SH 101 - Reconstruct with Safety Improvements
- 9 US 380 - Improve Access to Recreational Facilities

Crash Safety Ranking

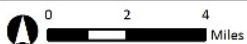
- Multiple Fatalities Recorded
- 2 Fatalities Reported

Roads At-Risk for Flooding

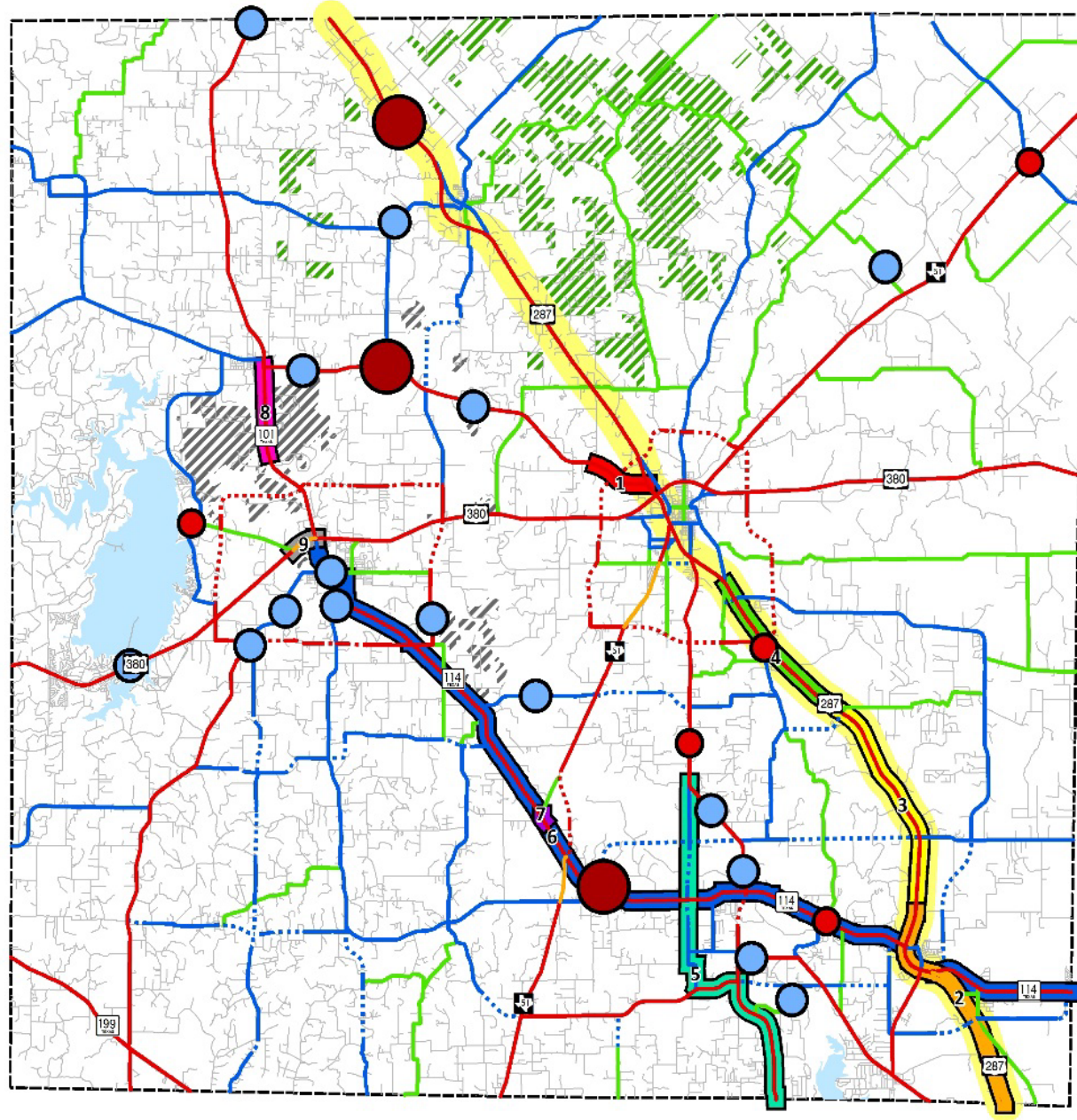
- High Impact Flood Locations

Facility Improvements

- 4/6 Lane Divided Roadway
- Proposed 4/6 Lane Divided Roadway
- 2/4 Lane Undivided Roadway
- Proposed 2/4 Lane Divided Roadway
- Enhanced Corridor
- Improvements Listed in Mobility 2040
- Other County Roadways
- Quarries
- LBJ Grasslands
- Lakes
- County Line








North Central Texas Council of Governments

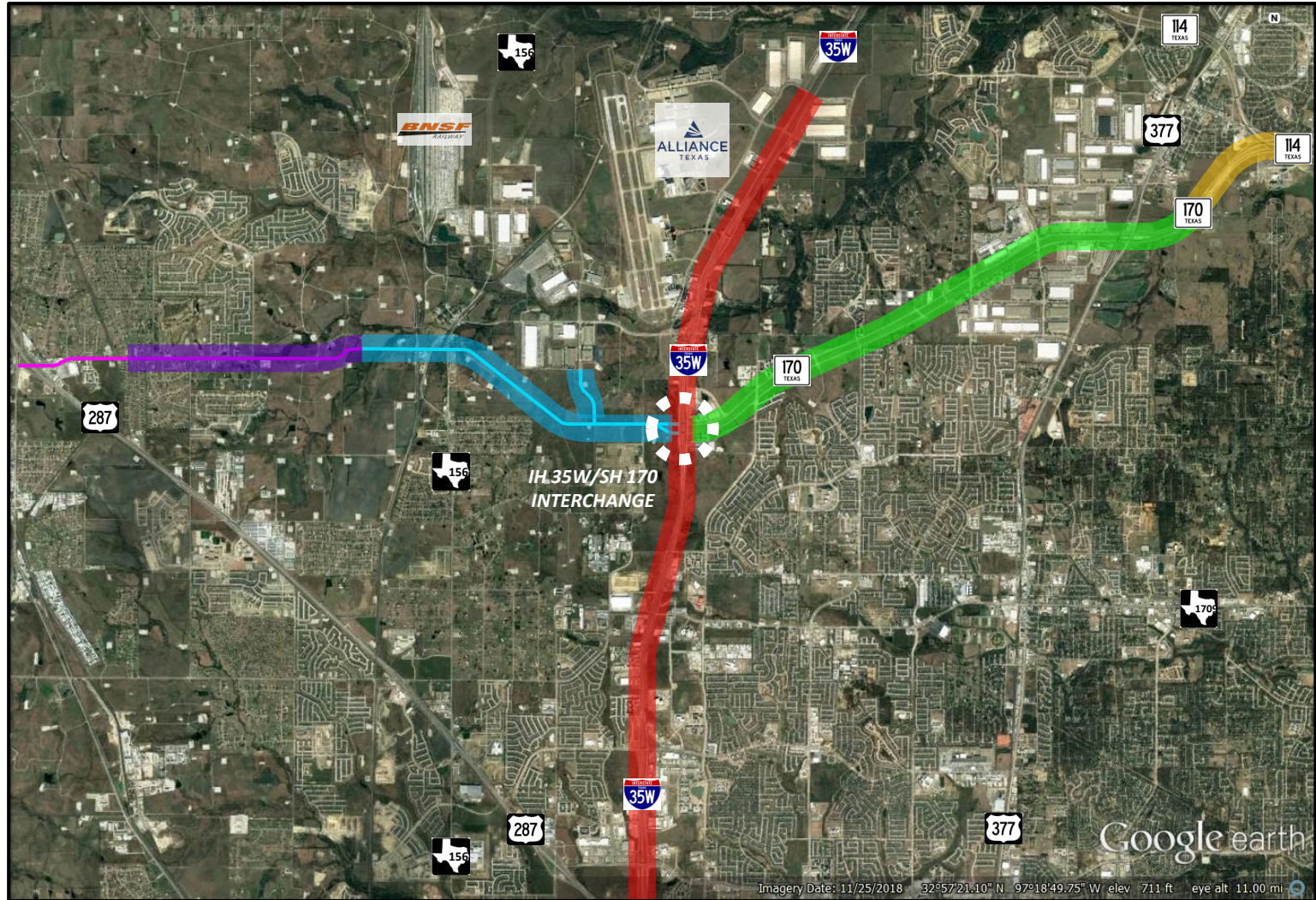


Note: New facility locations indicate transportation needs and do not represent specific alignments.

Transportation System Implementation

(US 287 – SH 114)

-  SH 114/SH 170 Interchange (TxDOT – Completed)
-  SH 170 “Super-Street” Concept (CAT 12 Funds)
-  IH 35W North Tarrant Express – Segment 3C
-  AllianceTexas/Haslet Accessibility Improvement Project – BUILD Grant
-  Fort Worth Bond Program (Avondale-Haslet Road)



CONTACT US



Samuel Simmons

Senior Transportation Planner

ssimmons@nctcog.org

817-704-2523



Berrien Barks

Program Manager

bbarks@nctcog.org

817-695-9282



Dan Lamers

Senior Program Manager

dlamers@nctcog.org

817-695-9263



Chris Reed

Principal Transportation Planner

creed@nctcog.org

817-695-9271



Brian Flood

Principal Transportation Planner

bflood@nctcog.org

817-695-9243



QUESTIONS?