

2020 Census
Participant Statistical Areas Program
(Census PSAP)

for the NCTCOG Region

Kathy Yu
North Central Texas Council of Governments

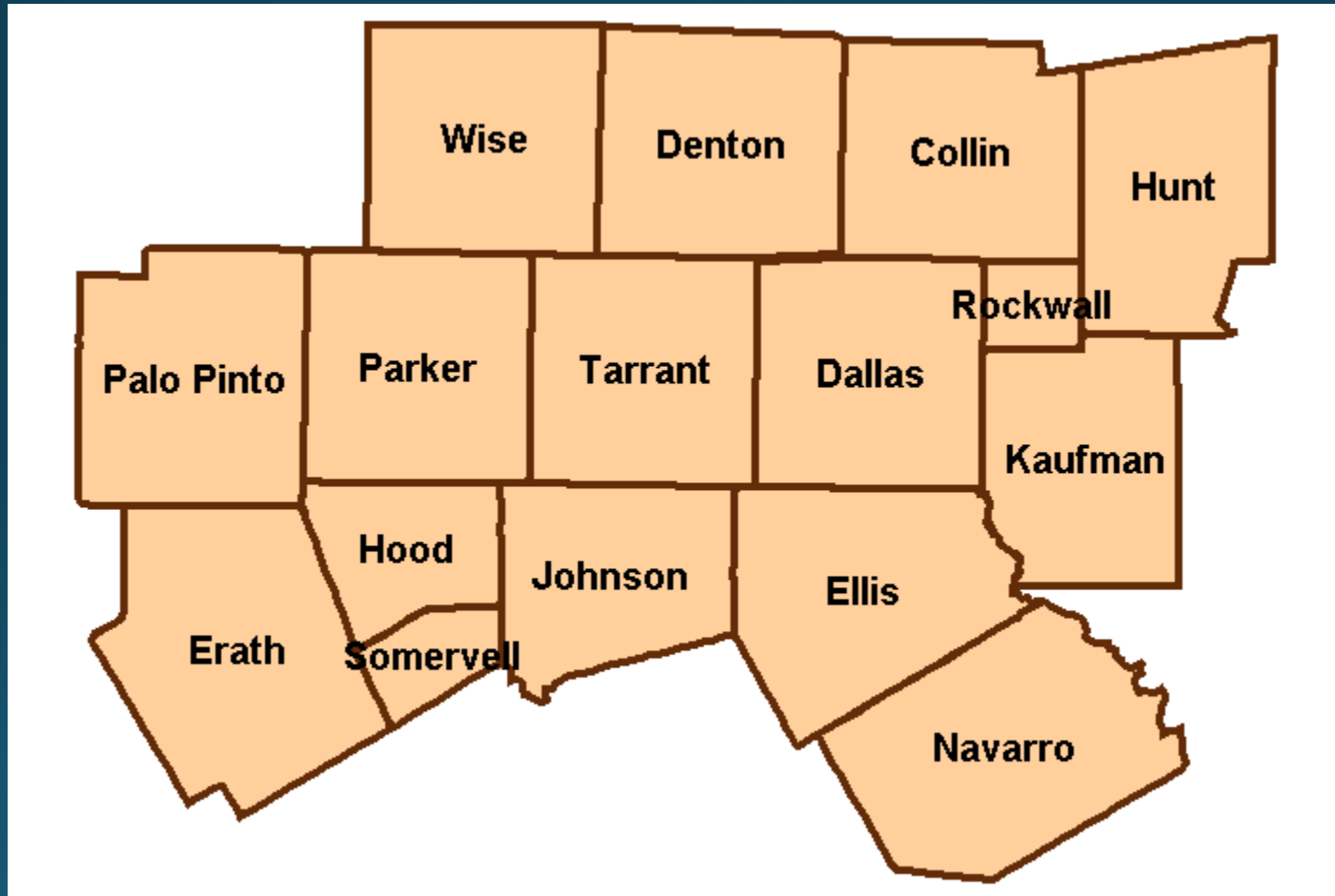
February 5, 2019



Outline

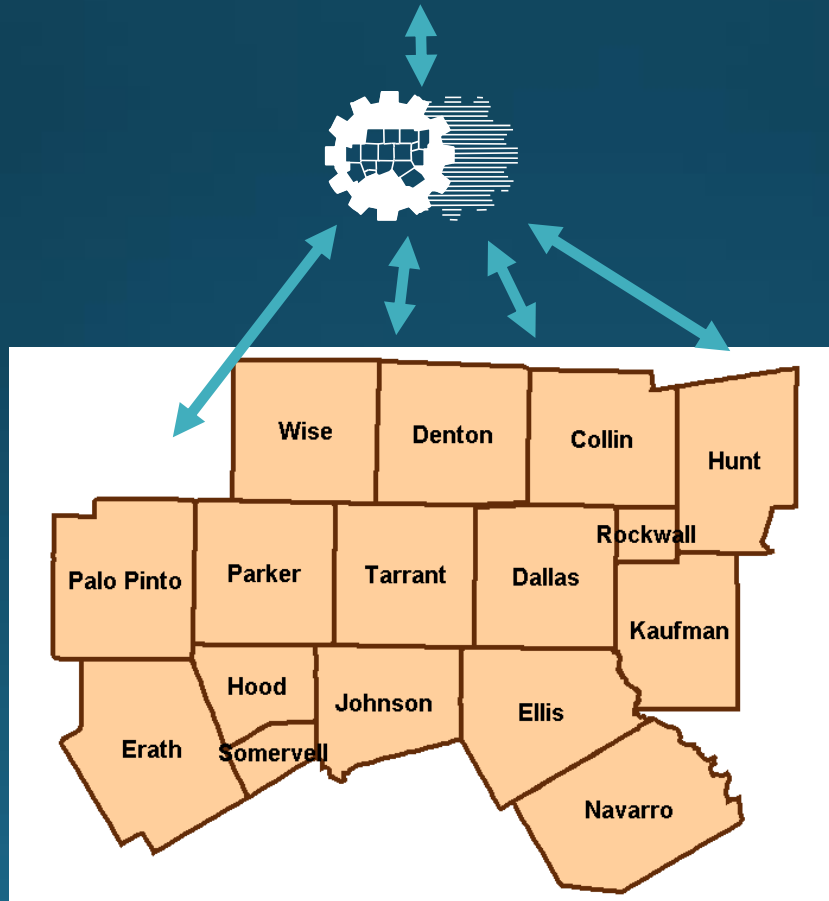
- NCTCOG as Primary Participant
- NCTCOG Pre-Plan for Boundaries
 - Census Tracts
 - Block Groups
 - Census Designated Places
 - Census County Divisions
- Program Details
 - Timeline
 - Downloads from NCTCOG, Submissions to NCTCOG
 - Website
- Discussion / Q & A

NCTCOG – Primary Participant for 16-County Region



Project Structure for Region

United States™
Census
Bureau



NCTCOG's Role

Our Responsibilities:

- Liaison with Census Bureau.
- Provide information about program to stakeholders.
- Receive boundary changes from all stakeholders.
- Resolve any boundary recommendation conflicts between adjacent or overlapping entities.
- Make final submissions for each of the 16 counties.

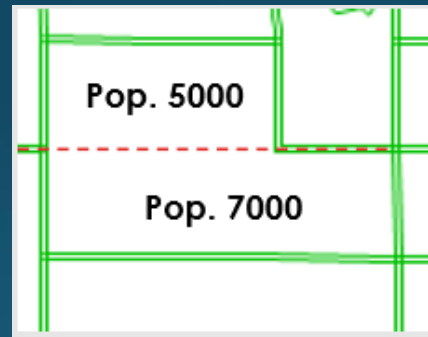
NCTCOG's 2020 Census PSAP Team

- Kathy Yu (Project Lead)
- Arash Mirzaei

- Amanda Long-Rodriguez
- Erin Lewis
- David Tidwell
- Jesse Brown

Why Should You be Involved?

- To meet minimum and maximum population/household thresholds.
- To consider new housing or business developments.
- To respect new roadways and structures.
- To modify unusual shapes of tracts/block groups.



- To separate employment centers where there is little to no population such as hospitals, parks/water, and shopping centers.

NCTCOG's Boundary Review

- NCTCOG has been reviewing the 2010 Census Tract, Block Group, CDP and CCD boundaries to see where splits and merges are required and needed.
- NCTCOG is developing an initial draft of the 2020 boundaries that will make available for each entity to review and on which to comment.
- NCTCOG is using American Community Survey 2017 5-year numbers to determine if Census Tracts and Block Groups need to be split or merged.

Census Tracts

Identifying Census Tracts to Review

Census Tract Considerations:

- Census tracts nest in counties.
- Changes are generally limited to merge and split.

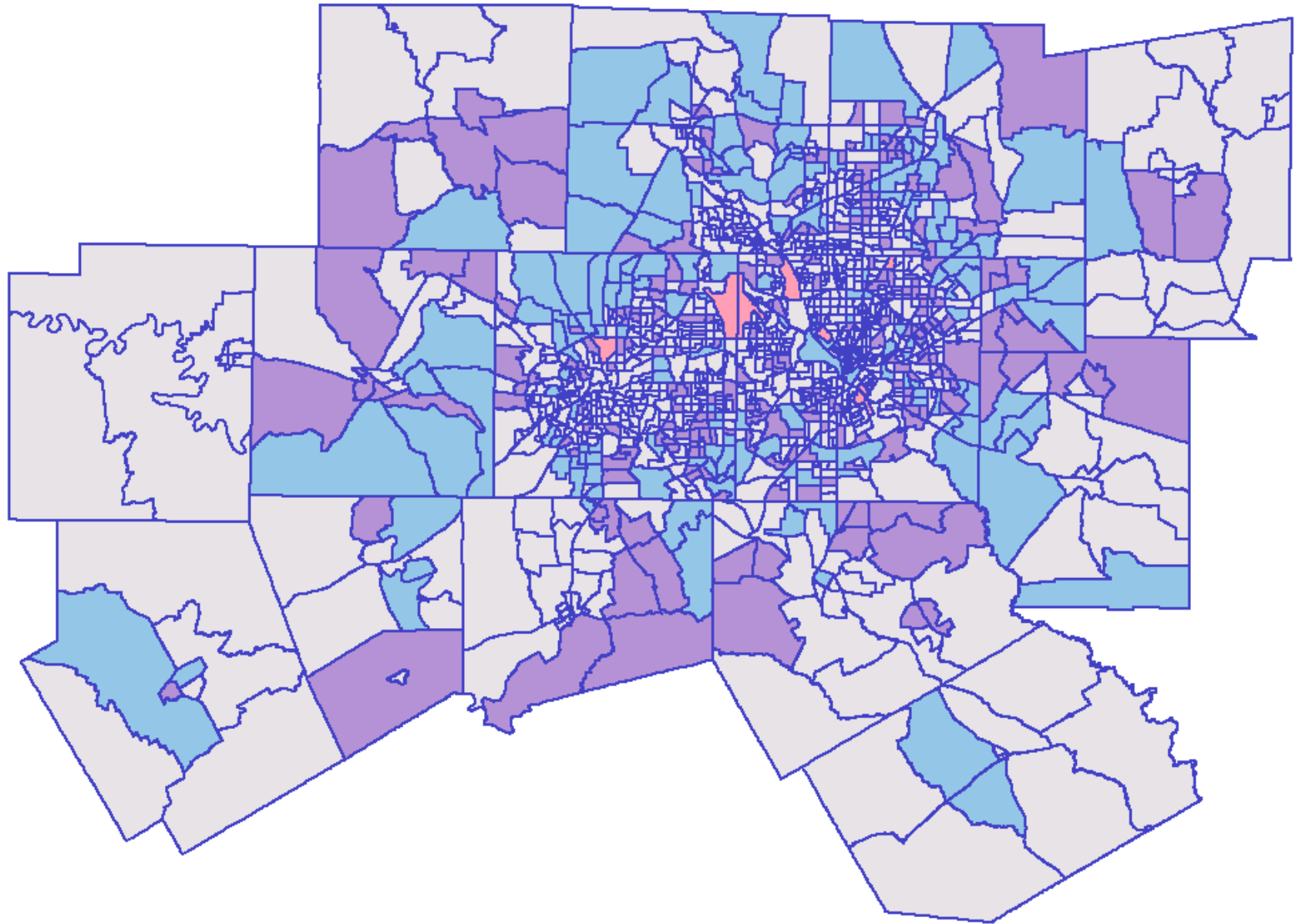
2010 Tracts – 1,351

2020 required merges (below Census Bureau minimum)– 16

2020 required splits (above Census Bureau maximum) – 191

NCTCOG is reviewing all tracts above 6,000 in population, lower than Census's population maximum of 8,000.

Therefore, we have 439 total tracts being considered for splits.



NCTCOG Census Tract Update

NCTCOG is considering the following to update tracts.

- Roadways
 - Streams
 - Land Use
 - City Boundaries
-
- NCTCOG is also considering number of households in each tract, in addition to population and housing units.

Census Tract – Split by I-35

Original Tract

0204.01

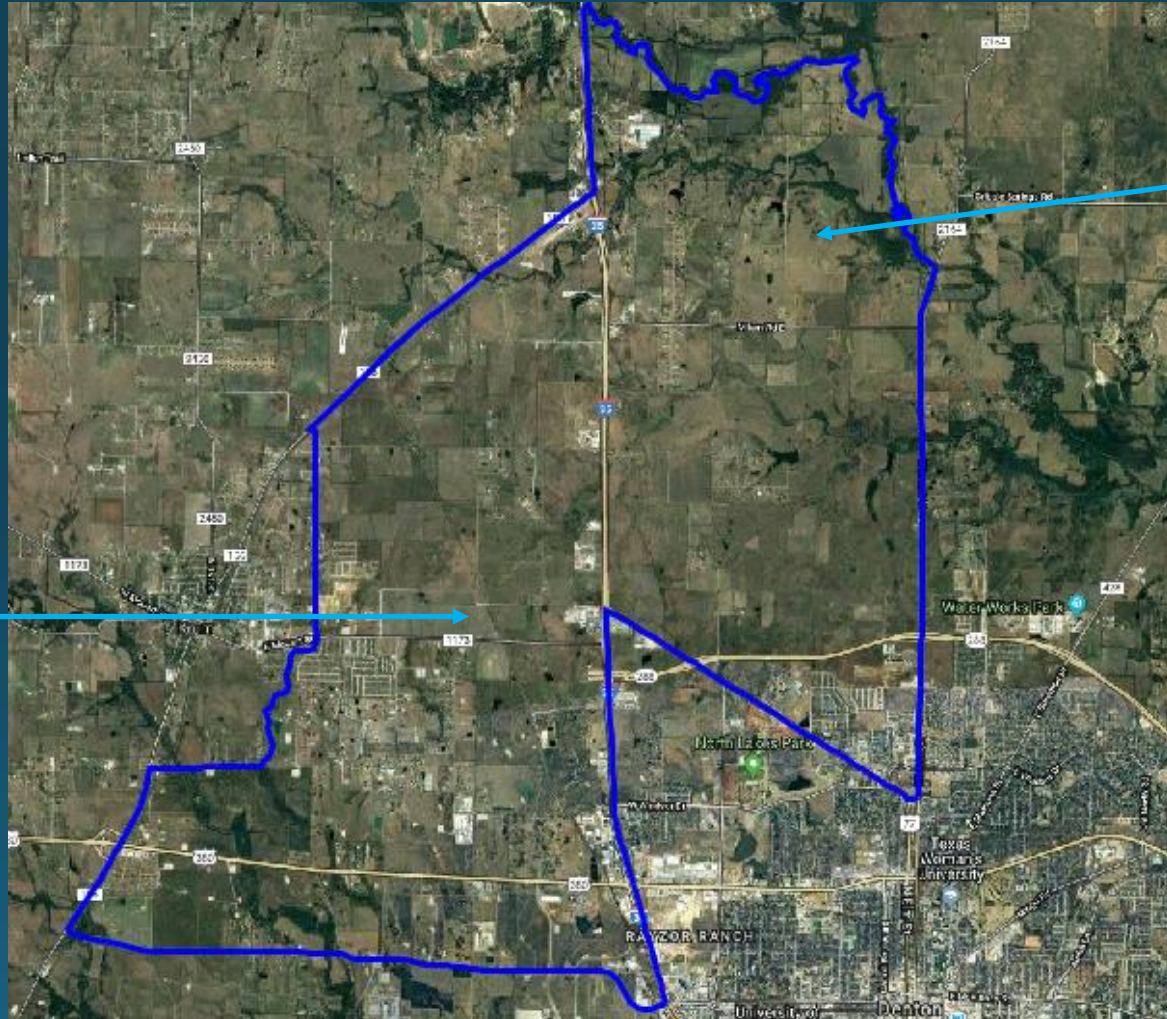
Pop: 9,137

Housing: 3,040

0204.01S01

Pop: 4,507

Housing: 1,468



0204.01S02

Pop: 4,637

Housing: 1,763

Census Block Groups

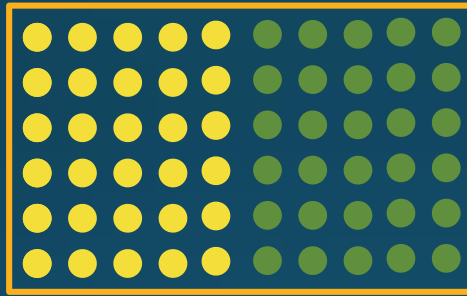
Block Group Criteria

Block Groups					
Type	Characteristics	National coverage?	Nests within:	Population threshold	Housing Threshold
Standard county based and tribal reservation based	Form the geographic framework within which census blocks are numbered. Smallest area for which demographic statistics are produced from the American Community Survey (ACS).	Yes	Census tracts	Minimum: 600 Maximum: 3000	Minimum: 240 Maximum: 1200
Special land use	Distinguish areas of little or no population that have a specific type of land use AND are coextensive with a special land use census tract. Large water bodies.	No	Census tracts	Little/None or must be within standard block groups thresholds. Area measurement thresholds are no longer applicable for special land use block groups. Recommend 600 employment	

- Block Groups nest in Census Tracts.
- There are a maximum of 9 block groups and 1 water block group within a tract.
- Block group boundaries do not have to be maintained from Census 2010. These could be completely redrawn, if desired.

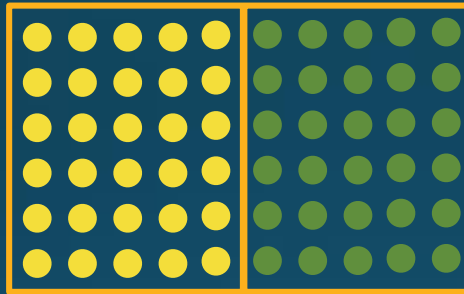
Special Block Group Illustration | PSAP 2010

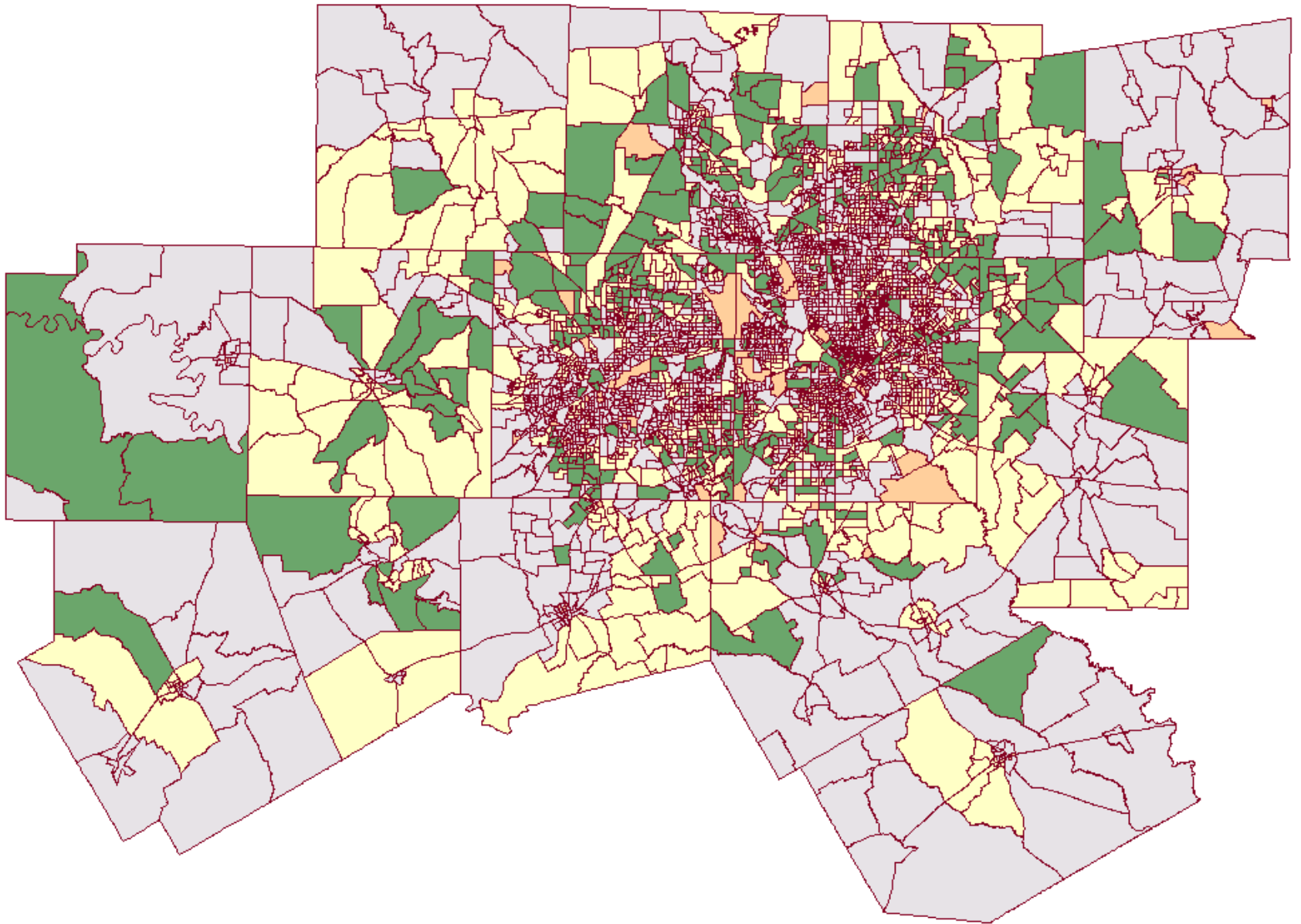
- = 20 residents
- = 20 employees
- = block group



Special Block Group Illustration | Census PSAP 2020

- = 20 residents
- = 20 employees
- = block group





NCTCOG Block Groups

Block Groups Numbers

- 2010 - 4,251
- 2020 required splits – 447
- 2020 required merges – 249
- 2020 block groups changed (required split/merges + parent tract change) – 1,956

NCTCOG is considering the following to update and possibly redraw block groups.

- Roadways
- Streams
- Land Use
- City Boundaries
- Demographics

Census Designated Places (CDPs)

Census Designated Places

NCTCOG currently has 17 CDPS.

Collin: Westminster

Denton: Lantana, Paloma Creek, Paloma Creek S, Savannah

Ellis: Bristol

Hood: Canyon Creek, Oak Trail Shores, Pecan Plantation*

Johnson: Pecan Plantation*

Kaufman: Elmo, Travis Ranch

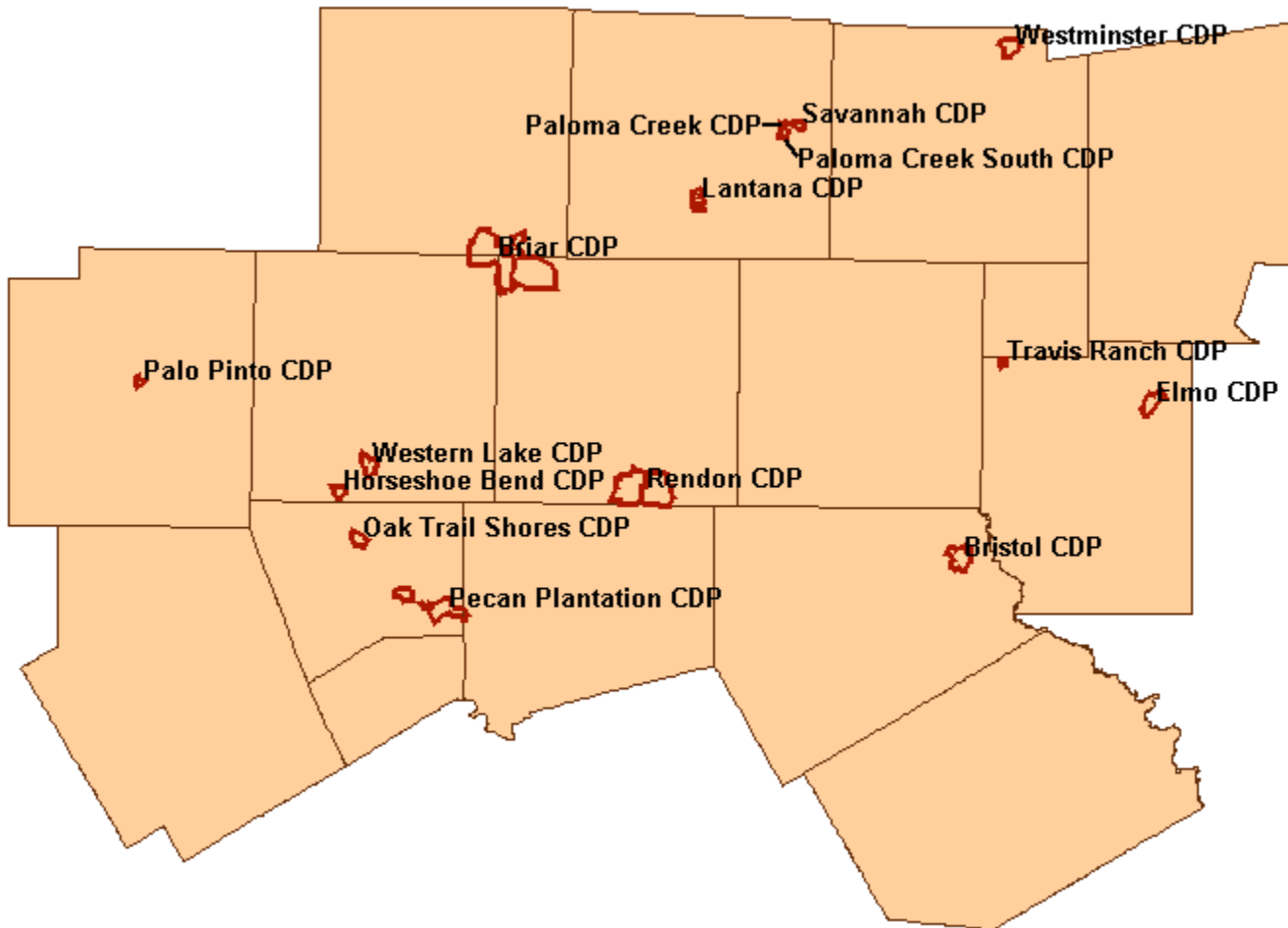
Palo Pinto: Palo Pinto

Parker: Briar**, Horseshoe Bend, Western Lake

Tarrant: Briar**, Pecan Acres*, Rendon

Wise: Briar**, Pecan Acres*

Census Designated Places - 2010



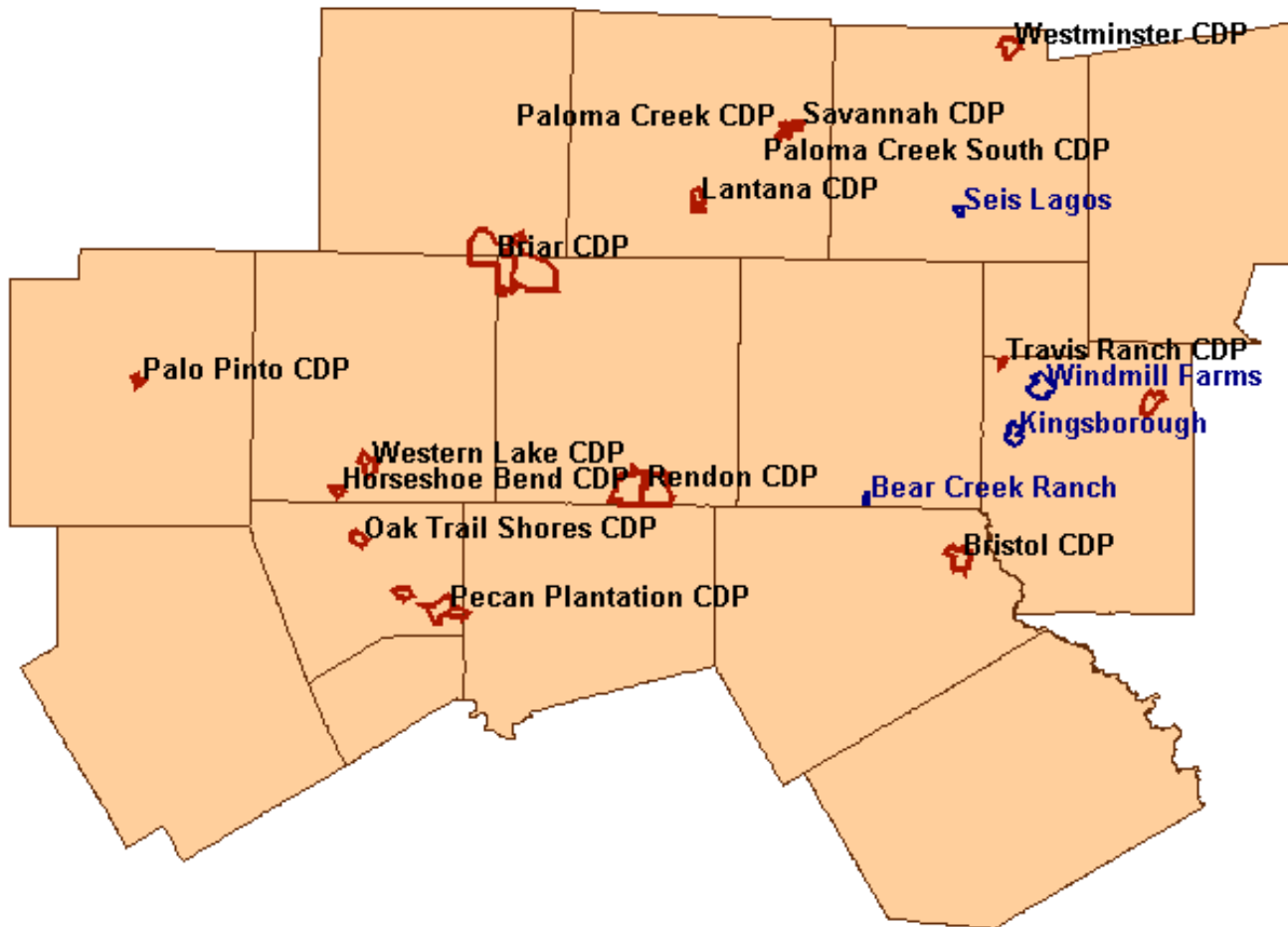
Census Designated Places

NCTCOG has reviewed municipal utility districts (MUDs) in our region that now have had significant development and potential for more. From these, we would recommend four additional CDPs.

- Bear Creek Ranch (Dallas)
- Kingsborough (Kaufman)
- Seis Lagos (Collin)
- Windmill Farms (Kaufman)

Entities are welcome to suggest additions or other changes.

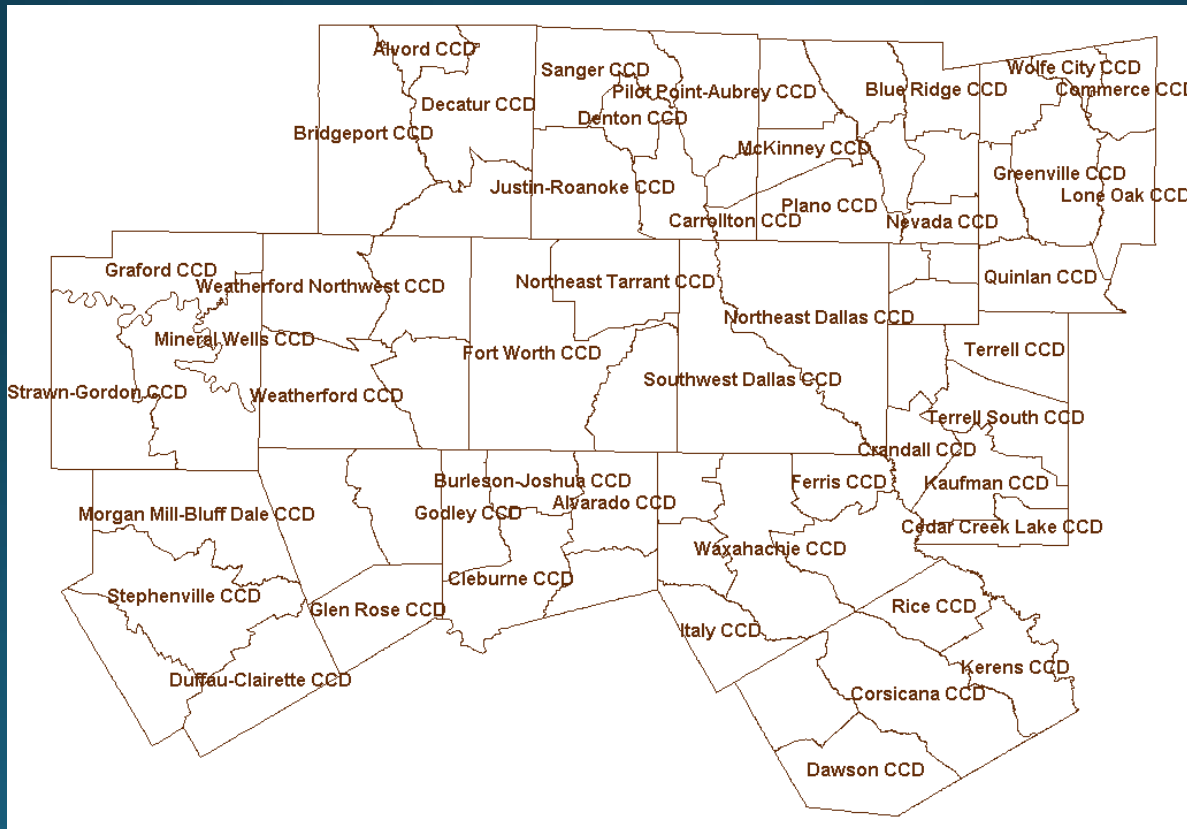
Census Designated Places - 2020



Census County Divisions (CCDs)

Census County Divisions

NCTCOG does not plan to make changes to the 71 Census County Divisions. Entities are welcome to suggest changes.



2020 Program Details for NCTCOG Region

Timeline for NCTCOG Region

Timeframe	Activity
February 5, 2019	Meeting with counties, cities, and other stakeholders.
February 15, 2019	Census Tract geography pre-plan available for download.
March 8, 2019	Census Tract comments due from all stakeholders. CCD and CDP geography pre-plan available for download.
March 31, 2019	Block Group geography pre-plan available for download.
April 30, 2019	Block Group, CCD, and CDP comments due from all stakeholders.
May 2019	NCTCOG reviews entity submissions, works with stakeholders on geography conflict resolution, and makes final submissions to Census Bureau.
June – December 2019	Census Bureau reviews boundary submissions.
January - March 2020	Verification phase begins. NCTCOG and entities have 90 calendar days to review updates.

Geography Downloads/Submissions

Geography Downloads from NCTCOG

- Download from website: <http://www.nctcog.org/census2020psap>
- Contact census2020psap@nctcog.org if another format is needed.

Submission of Geographies to NCTCOG

- Formats:
 - Adobe PDF Files of Maps
 - Shapefiles
 - GUPS Project Zip Files
- Data Source:
 - All geography changes should note the source of data used to support those changes – Decennial Census, ACS, State Data Center, local source, population counts, etc.
- Email Subject Line: [County]-[Entity]-[Geography]
for example, Tarrant – Arlington – Block Group

NCTCOG's 2020 Census PSAP Website

2020 Census Participant Statistical Areas Program (PSAP)

The 2020 Census Participant Statistical Areas Program (PSAP) allows local governments, following Census Bureau guidelines, to review and update the boundaries for Census tracts, Census block groups, Census Designated Places, and, where applicable, Census County Divisions for the 2020 Census. The updated statistical areas will be used by the Census Bureau to report data from the 2020 Decennial Census, American Community Survey, and, as appropriate, other censuses and surveys.

The North Central Texas Council of Governments (NCTCOG) is serving as the 2020 Census PSAP primary participant for all counties in NCTCOG's 16-county region. NCTCOG's Transportation Department will coordinate the edits to Census geography boundaries with input from local governments and entities and submit final boundary plans for each county to the Census Bureau in spring 2019. The Census Bureau will review the edits and determine the final delineations to be validated in 2020.

To stay informed or ask questions about the 2020 Census PSAP process in the NCTCOG region, please complete the [Contact Us form](#) below.

Shapefile Download Center:

Connect to this [page](#) to download NCTCOG pre-plans for each geography.

NCTCOG PSAP Timeline:

- February 5, 2019 - 2 p.m - Transportation Council Room, NCTCOG, 616 Six Flags Drive, Arlington, TX

Regional Planning & Projects

Congestion Management

Maps, Models & Data

Quality of Life

Funding & Business

Plans, Studies, Reports

Get Involved

About Transportation

Website- Shapefile Downloads Page

Downloads - 2020 Census Participant Statistical Areas Program

Please use the following links to download the NCTCOG pre-plan geographies for each county.
February 15, 2019 - Census Tract shapefiles will be made available.
March 8, 2019 - CDP and CCD shapefiles will be made available.
March 31, 2019 - Block Group shapefiles will be made available.

Collin County:

- Collin Tracts
- Collin CDPs and CCDs
- Collin Block Groups

Dallas County:

- Dallas Tracts
- Dallas CDPs and CCDs
- Dallas Block Groups

Denton County

- Denton Tracts
- Denton CDPs and CCDs
- Denton Block Groups

Regional Plan
& Projects

Congestion
Management

Maps, Models
Data

Quality of Life

Funding &
Business

Plans, Studies
Reports

Discussion / Q & A

Contact Us

Website:

<http://www.nctcog.org/census2020psap>

Email:

census2020psap@nctcog.org