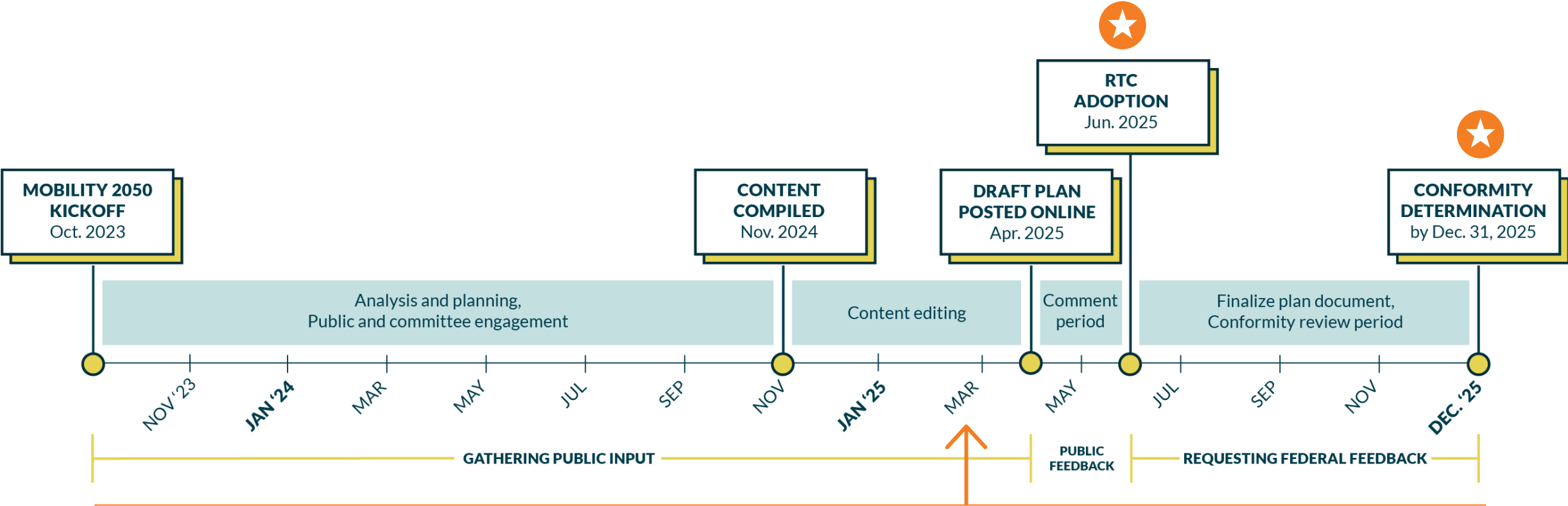


# MOBILITY 2050

*Surface Transportation Technical Committee  
March 28, 2025*

# Plan Development Timeline



- Technical analysis complete
- Plan content being reviewed/formatted
- Public involvement analysis is being summarized

# Major Mobility Plan Components

**PLAN CONTENT**

- PROGRAMS**
- POLICIES**
- PROJECTS**

**Information**

**Results and Recommendations**  
Available for Public Review  
(60 Days)

**FINANCIAL PLAN**

**FINANCIAL CONSTRAINT**

**Information**

**Results and Recommendations**  
Available for Public Review  
(60 Days)

**NONDISCRIMINATION ANALYSIS**

**NO DISPARATE IMPACTS**

**Information**

**Results and Recommendations**  
Available for Public Review  
(60 Days)

**AIR QUALITY CONFORMITY**

**CONSISTENCY WITH FEDERAL/STATE AIR QUALITY GOALS**

**Information**

Process in April/  
Results in May  
**Results and Recommendations**  
Available for Public Review  
(30 Days)

# Draft Financial Plan

DRAFT	DRAFT Mobility 2050	Mobility 2045 Update <sup>3</sup>	Δ Draft - Previous
<b>Infrastructure Maintenance<sup>1</sup></b>	\$32.1	30.7	+1.4
<b>Management &amp; Operations</b>	23.9	17.9	+6.1
<b>Strategic Policy Initiatives<sup>2</sup></b>	6.4	5.3	+1.1
<b>Rail &amp; Bus</b>	56.0	44.9	+11.1
<b>Freeways/Tollways, Managed Lanes, and Arterials</b>	97.4	49.5	+47.9
<b>Total, Actual \$, Billions</b>	<b>\$215.8 B</b>	<b>148.3 B</b>	<b>+67.5 B</b>

*Values may not sum due to independent rounding*

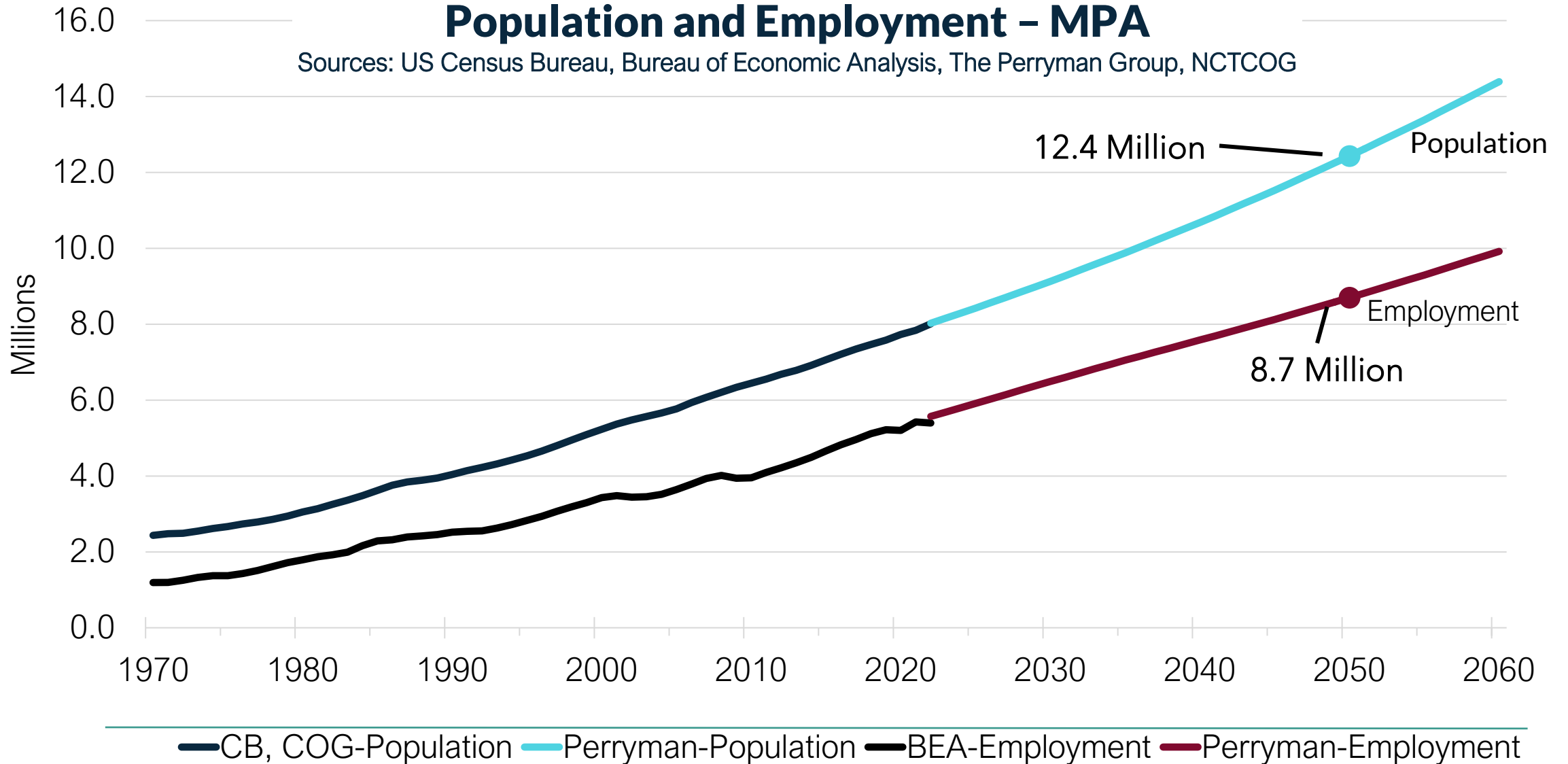
<sup>1</sup> Infrastructure Maintenance now includes both transit and roadway. Transit operations and maintenance is assumed to be comprised of 50% maintenance.

<sup>2</sup> Strategic Policy Initiatives include programs and policy priorities for safety, technology, and equity, air quality, and sustainable development.

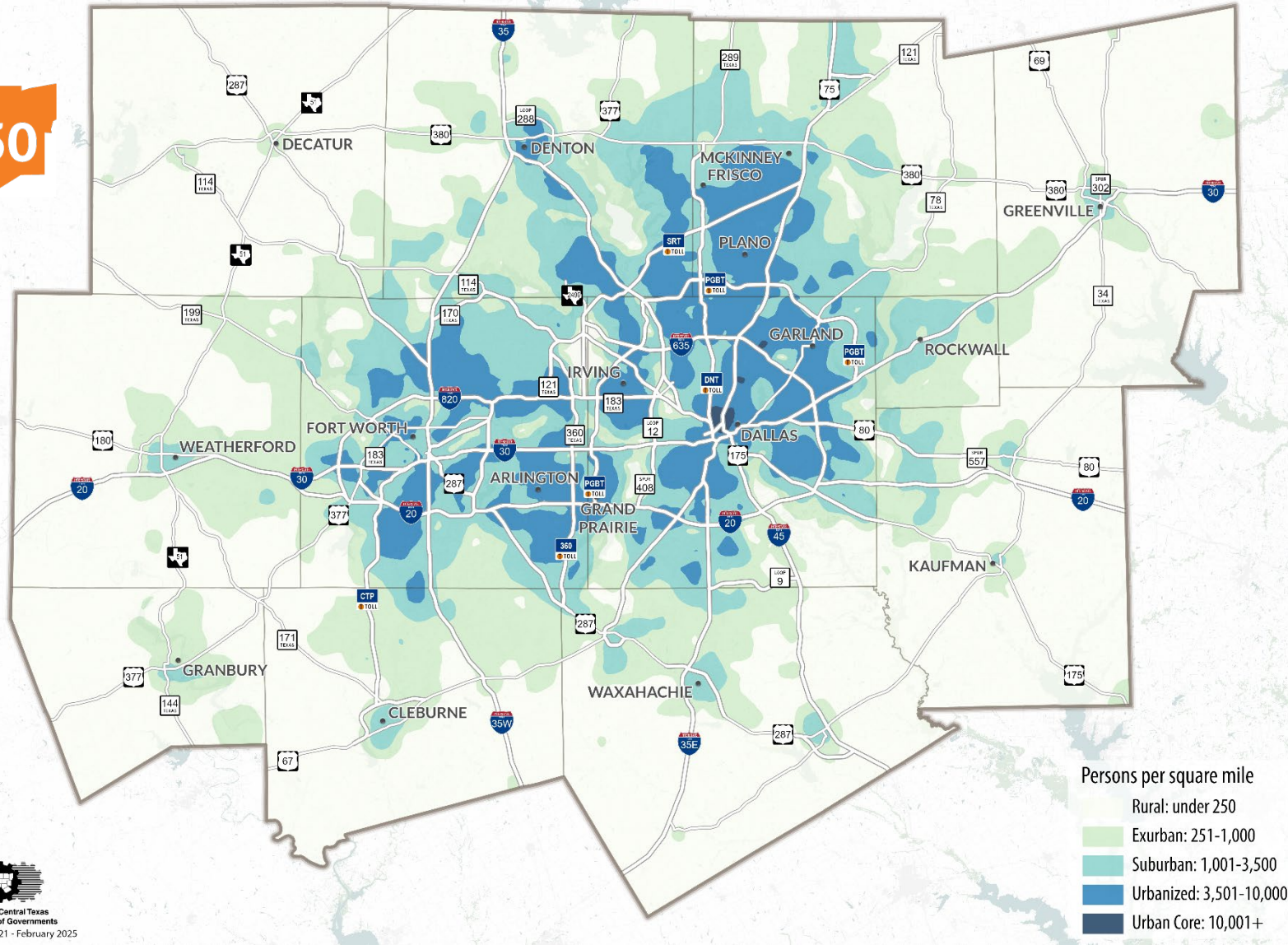
<sup>3</sup> The Mobility 2045 Update comparison figures have been reorganized for comparison purposes into the Mobility 2050 categories.

# Historical and Projected Total Population and Employment - MPA

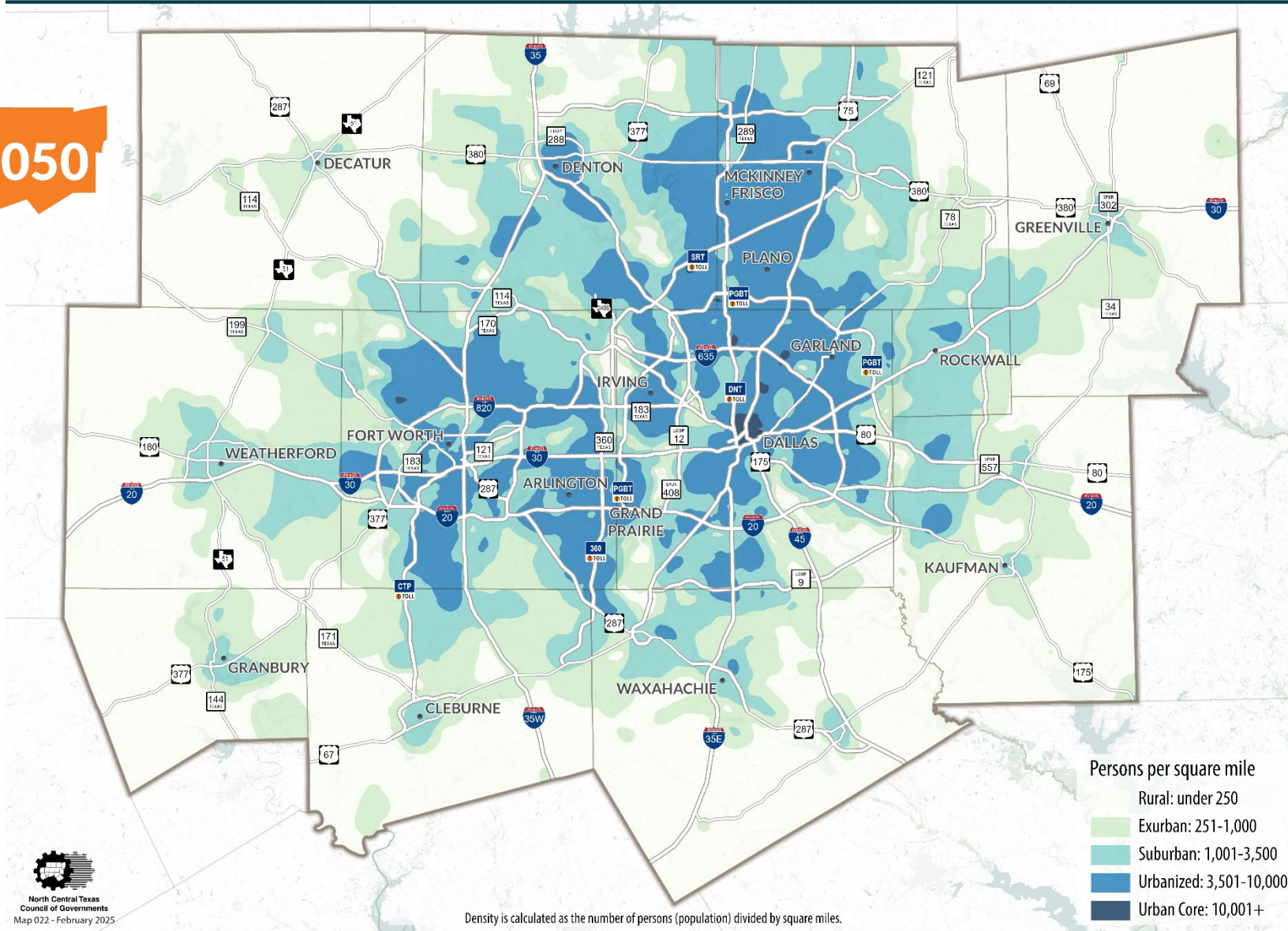
Sources: US Census Bureau, Bureau of Economic Analysis, The Perryman Group, NCTCOG



MOBILITY2050



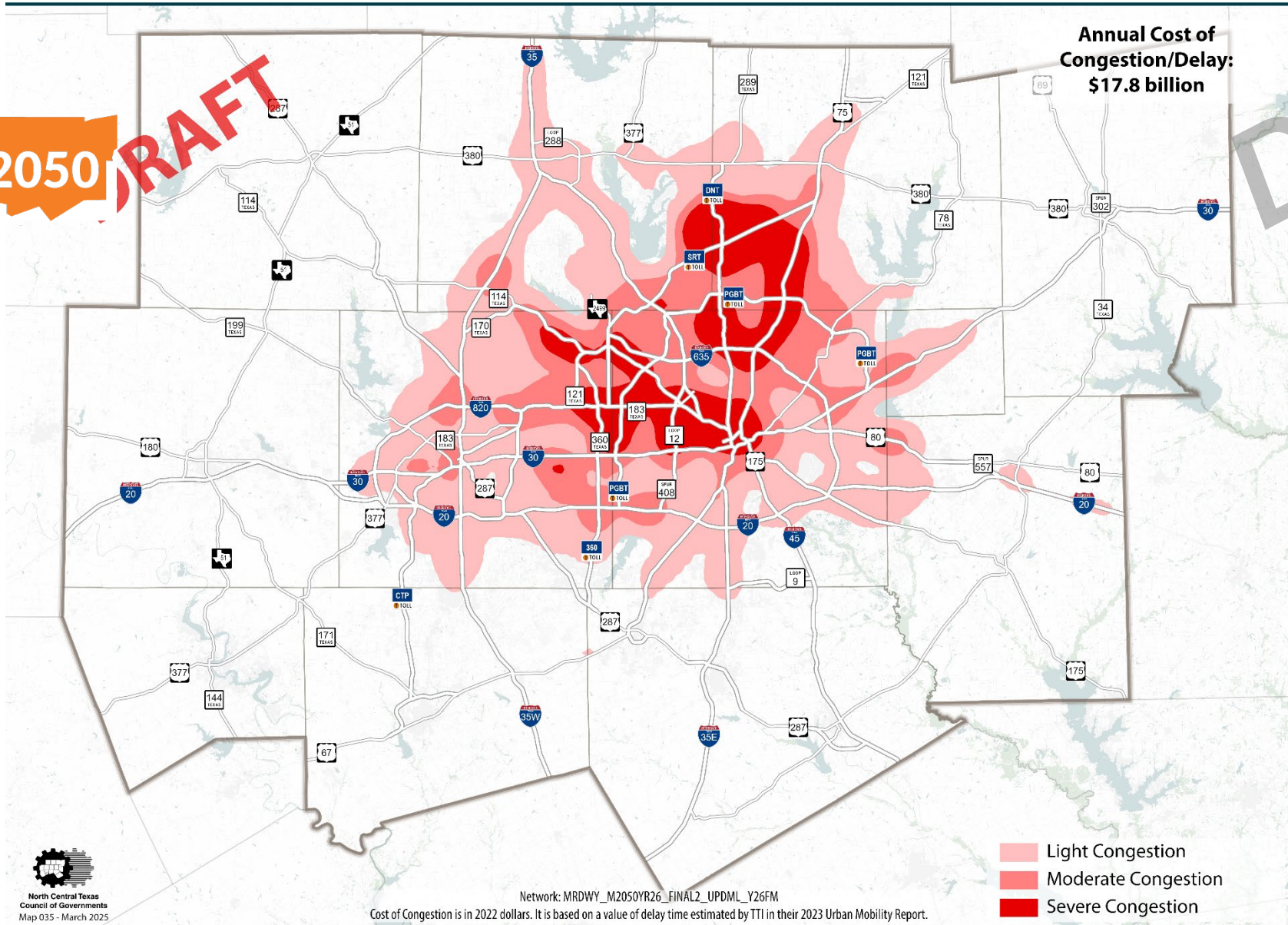
MOBILITY2050



DRAFT

Annual Cost of Congestion/Delay: \$17.8 billion

DRAFT



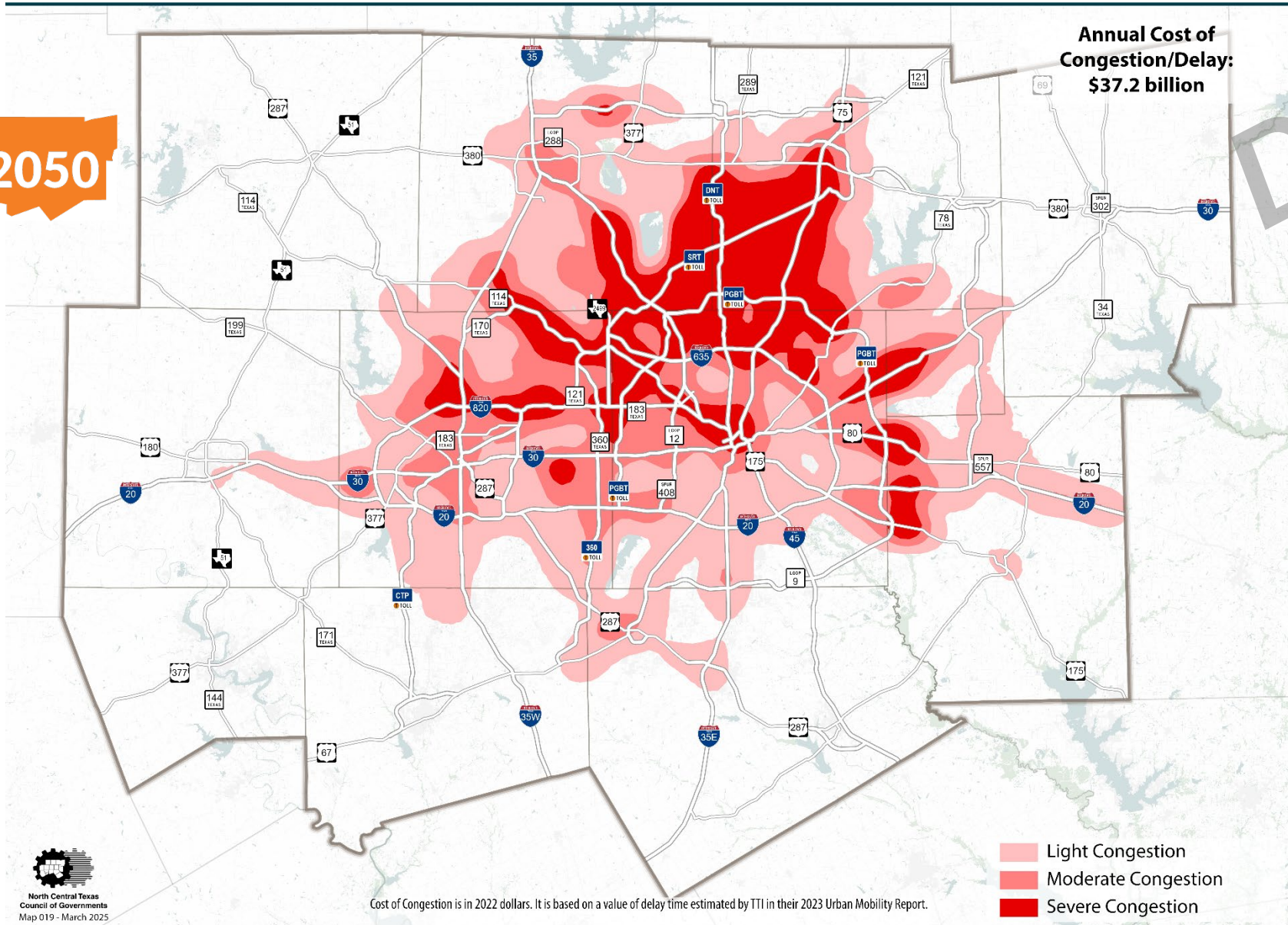
Network: MRDWY\_M2050YR26\_FINAL2\_UPDML\_Y26FM  
 Cost of Congestion is in 2022 dollars. It is based on a value of delay time estimated by TTI in their 2023 Urban Mobility Report.

- Light Congestion
- Moderate Congestion
- Severe Congestion



Annual Cost of Congestion/Delay: \$37.2 billion

DRAFT



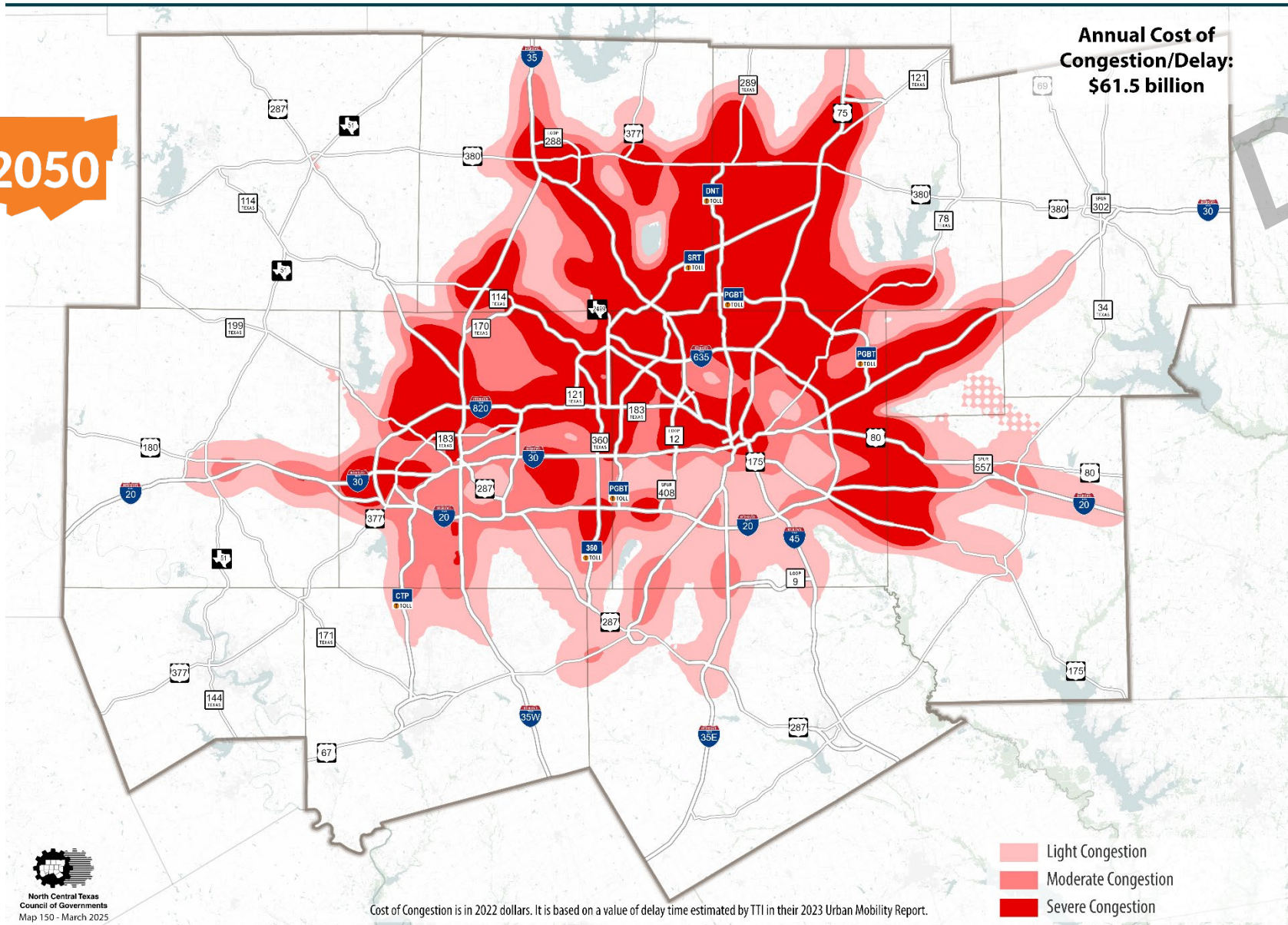
  
 North Central Texas  
 Council of Governments  
 Map 019 - March 2025

Cost of Congestion is in 2022 dollars. It is based on a value of delay time estimated by TTI in their 2023 Urban Mobility Report.

- Light Congestion
- Moderate Congestion
- Severe Congestion

Annual Cost of Congestion/Delay: \$61.5 billion

DRAFT

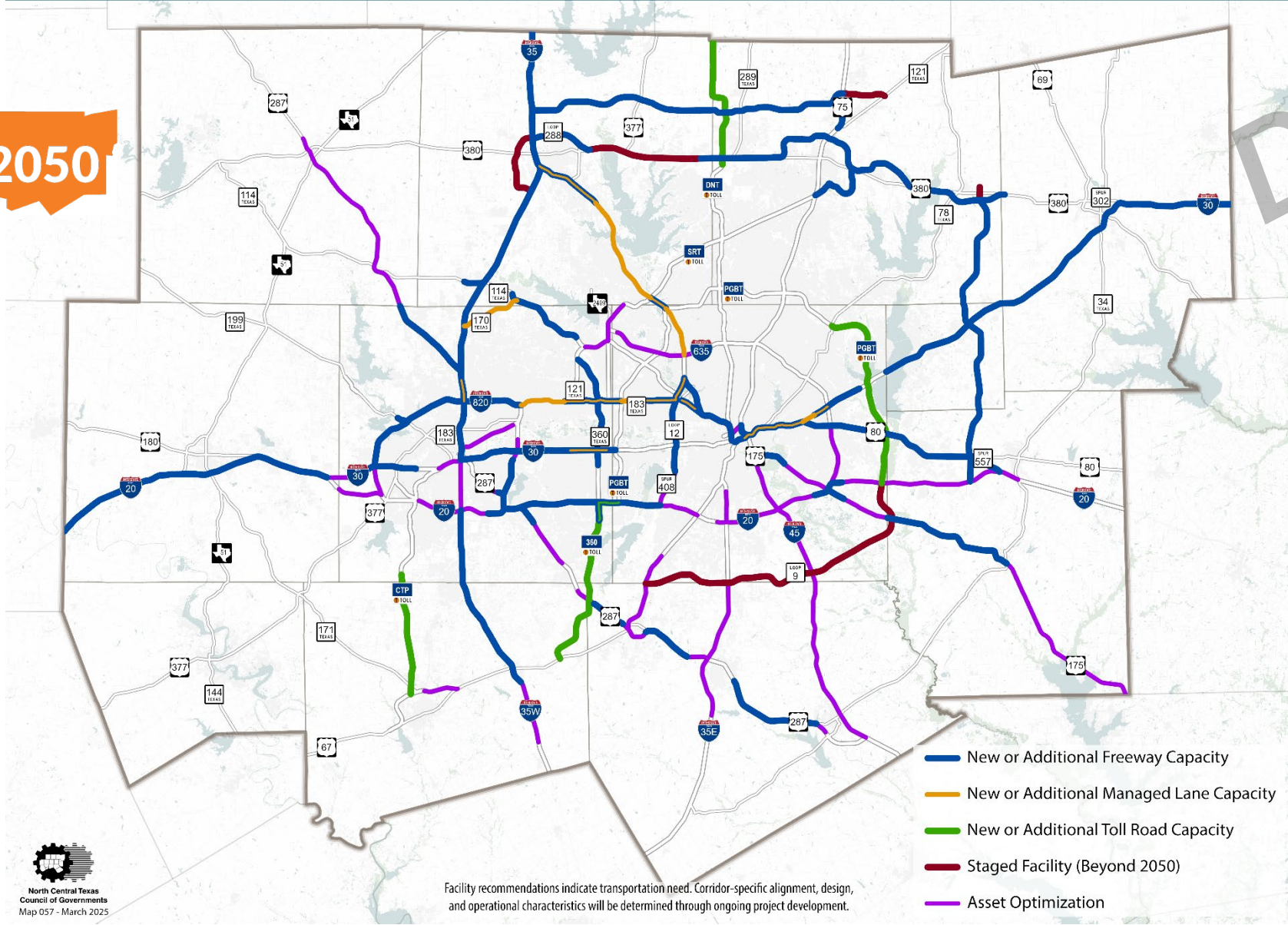


North Central Texas Council of Governments  
Map 150 - March 2025

Cost of Congestion is in 2022 dollars. It is based on a value of delay time estimated by TTI in their 2023 Urban Mobility Report.



DRAFT

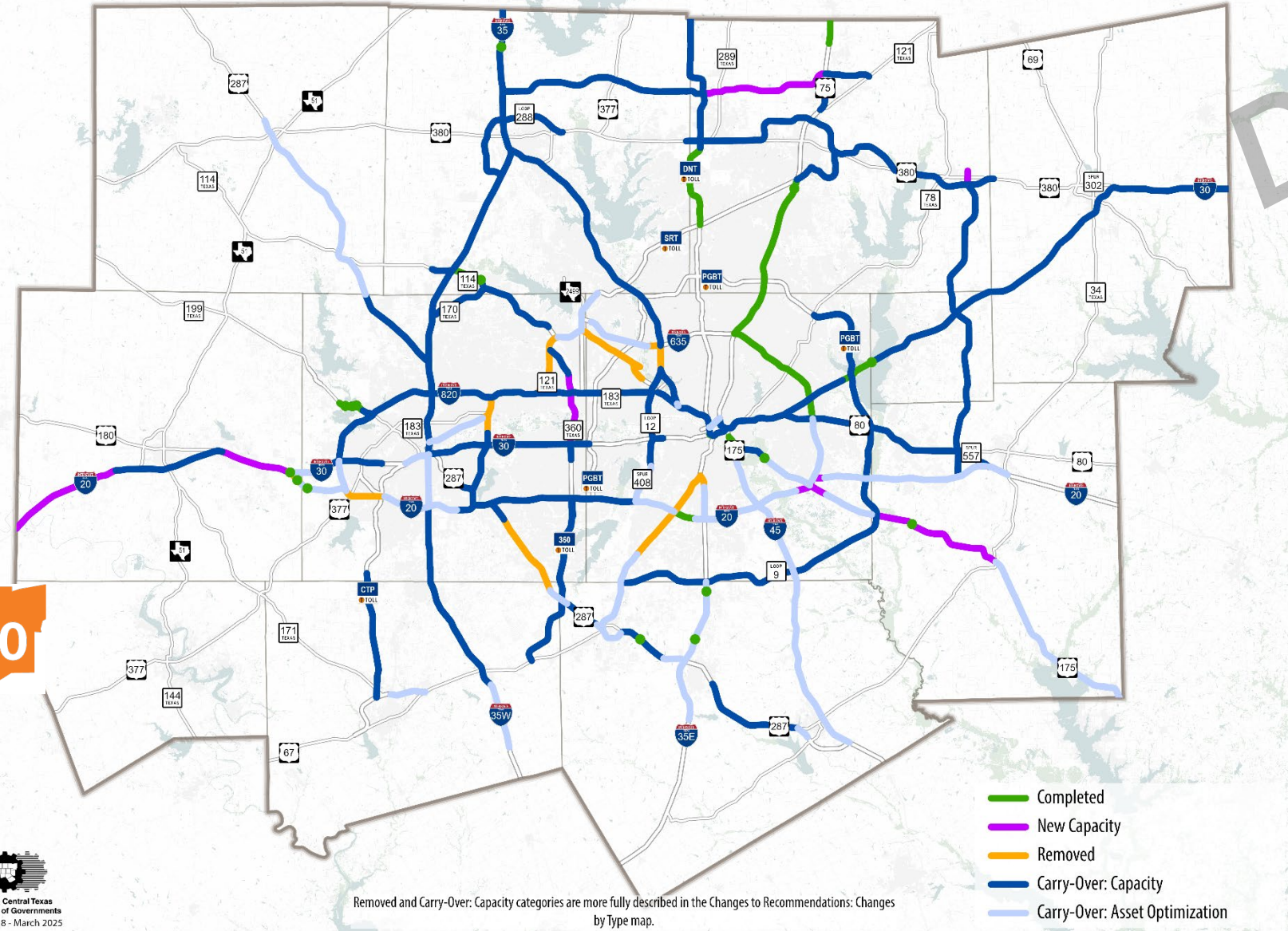


North Central Texas Council of Governments  
Map 057 - March 2025

DRAFT



MOBILITY2050



- Completed
- New Capacity
- Removed
- Carry-Over: Capacity
- Carry-Over: Asset Optimization

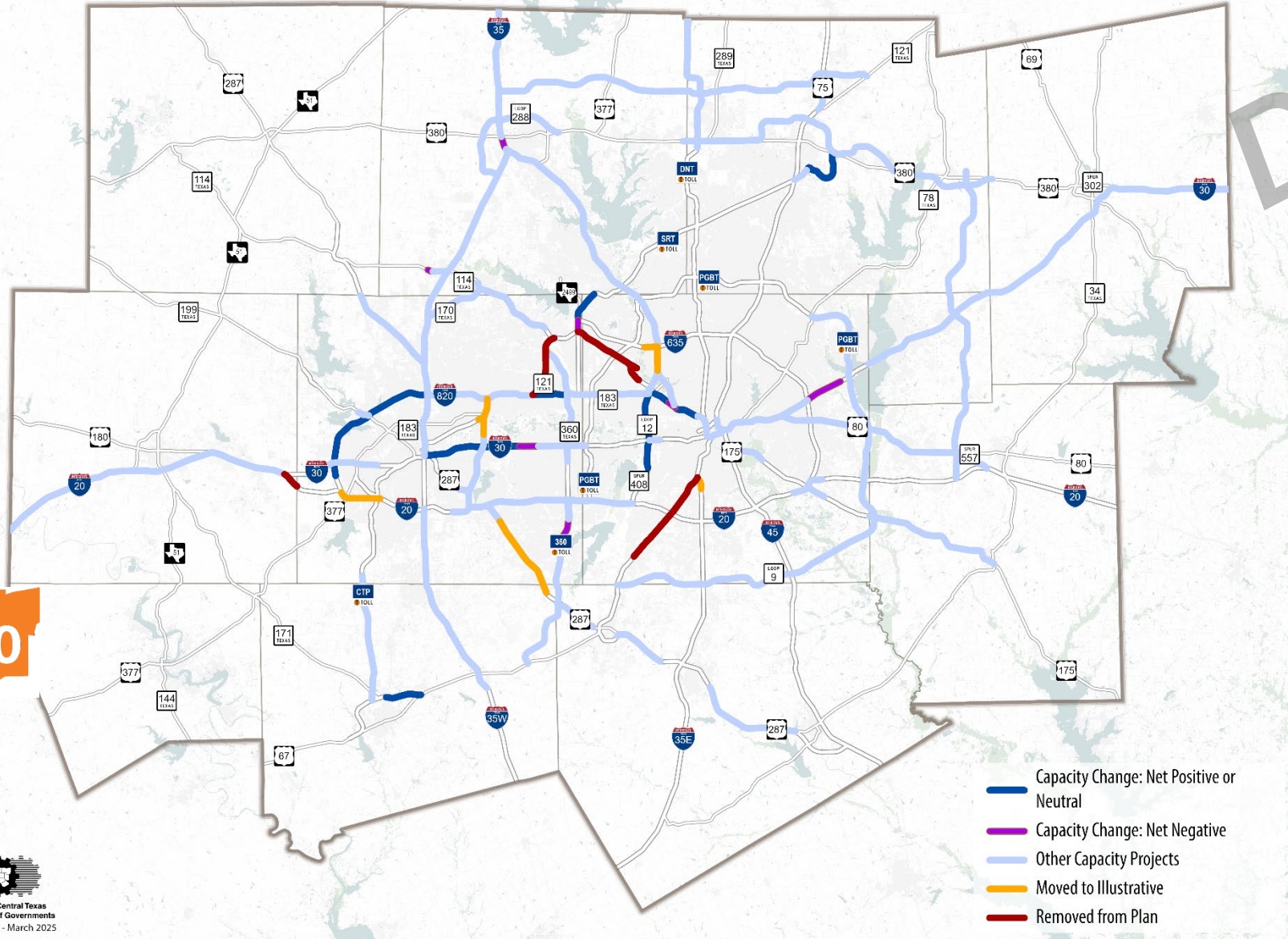
Removed and Carry-Over: Capacity categories are more fully described in the Changes to Recommendations: Changes by Type map.



DRAFT



MOBILITY2050

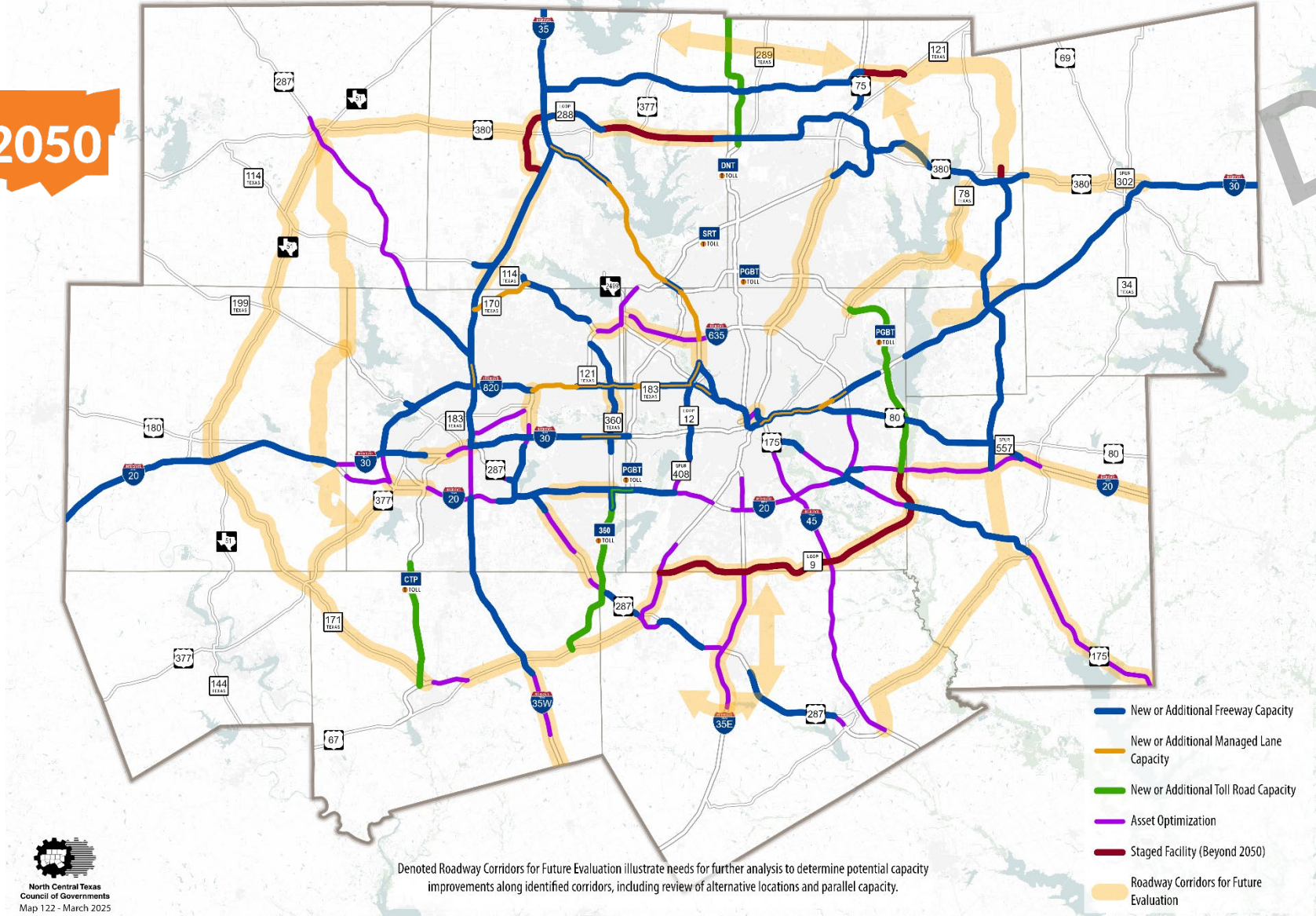


- Capacity Change: Net Positive or Neutral
- Capacity Change: Net Negative
- Other Capacity Projects
- Moved to Illustrative
- Removed from Plan

North Central Texas Council of Governments Map 120 - March 2025



DRAFT

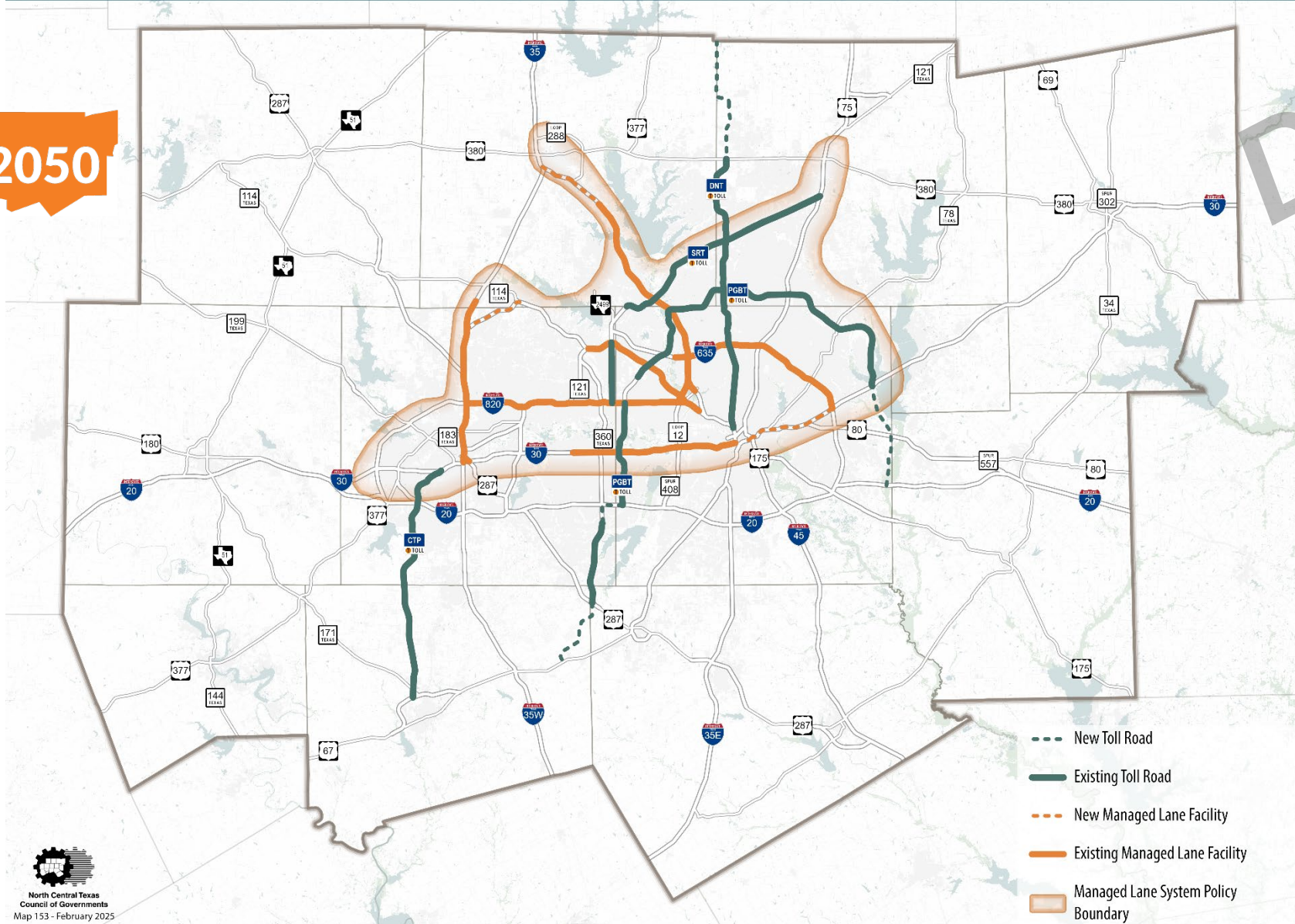


Denoted Roadway Corridors for Future Evaluation illustrate needs for further analysis to determine potential capacity improvements along identified corridors, including review of alternative locations and parallel capacity.



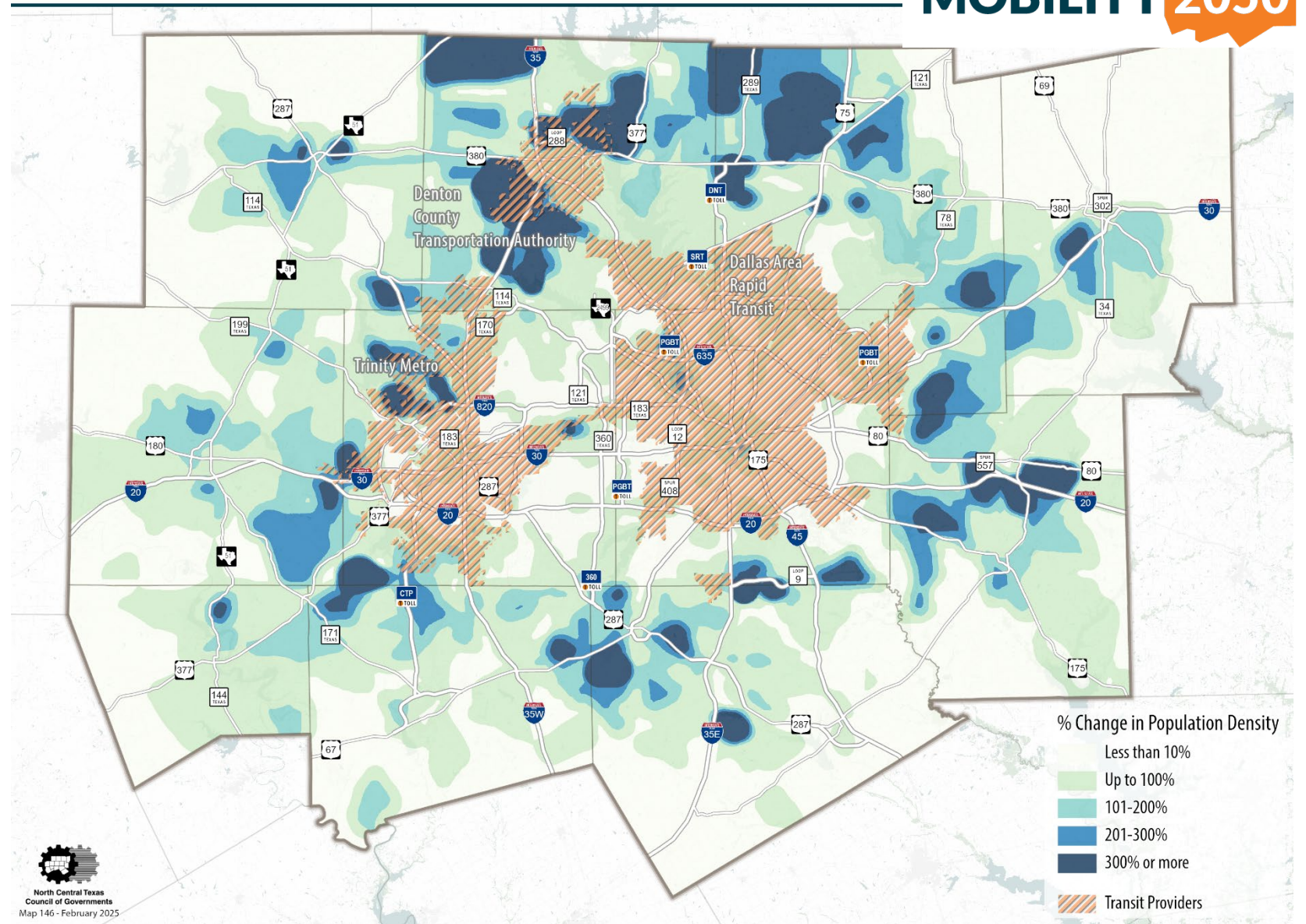
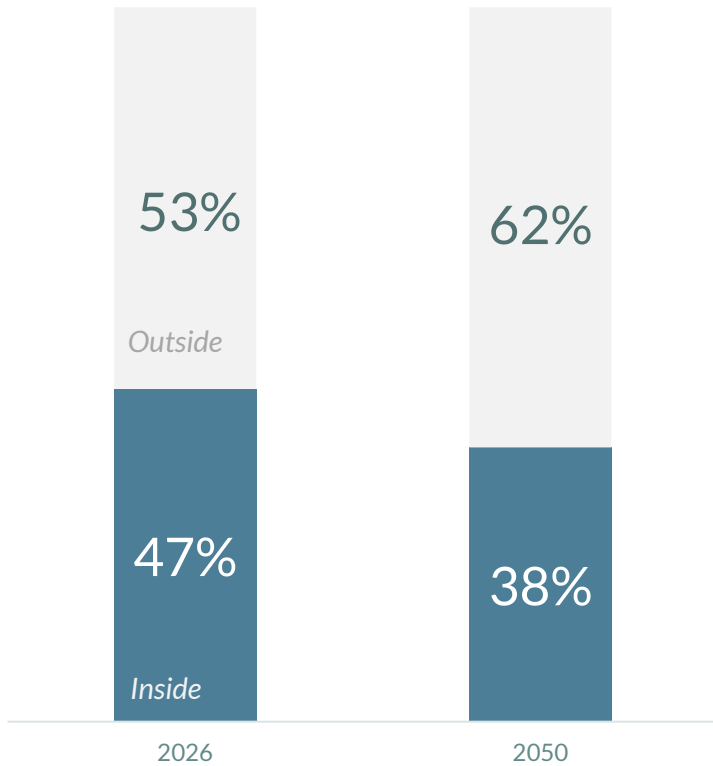


DRAFT

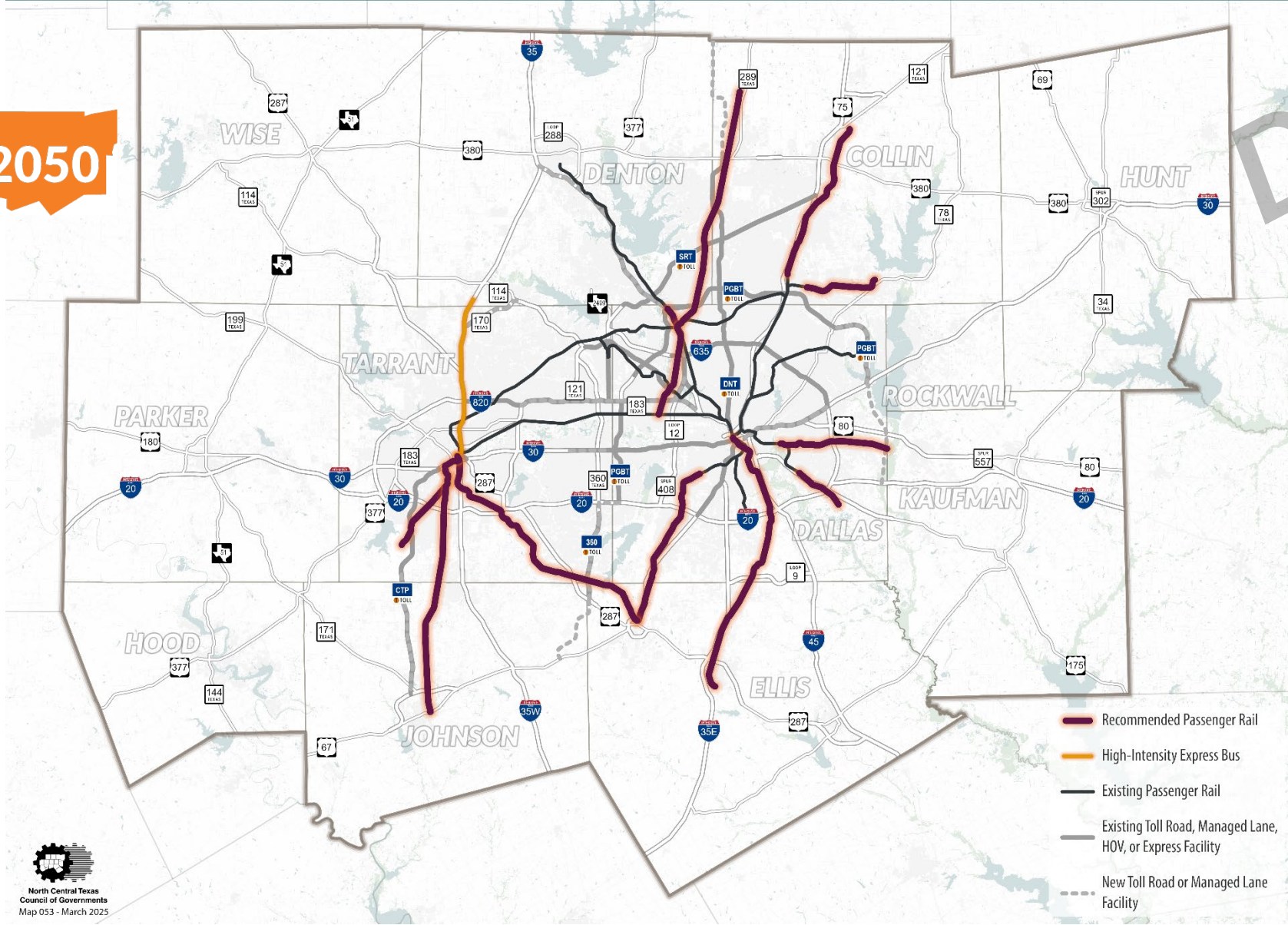


North Central Texas  
Council of Governments  
Map 153 - February 2025

# Population within Transit Authority Service Areas

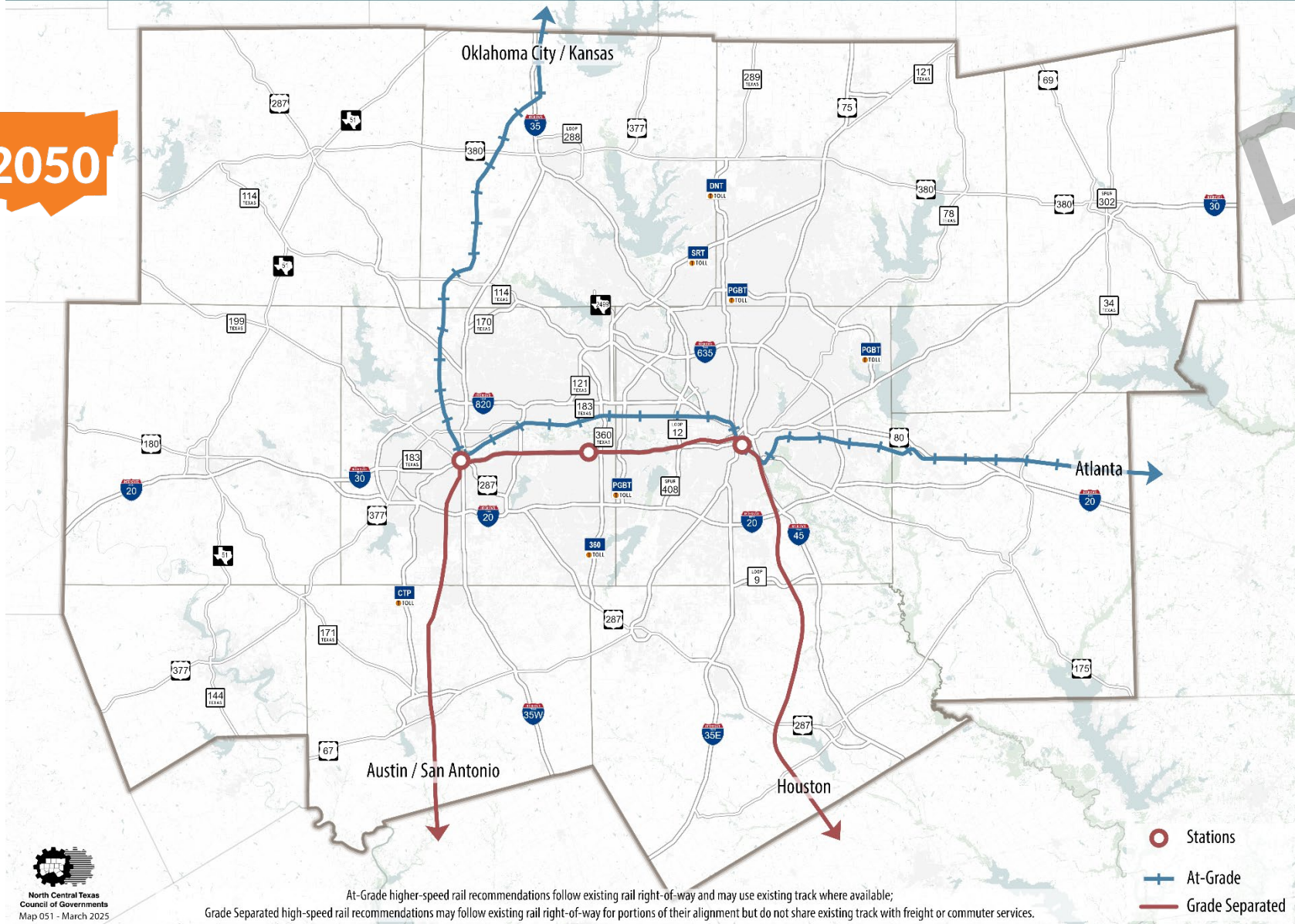


DRAFT



  
 North Central Texas  
 Council of Governments  
 Map 053 - March 2025

DRAFT

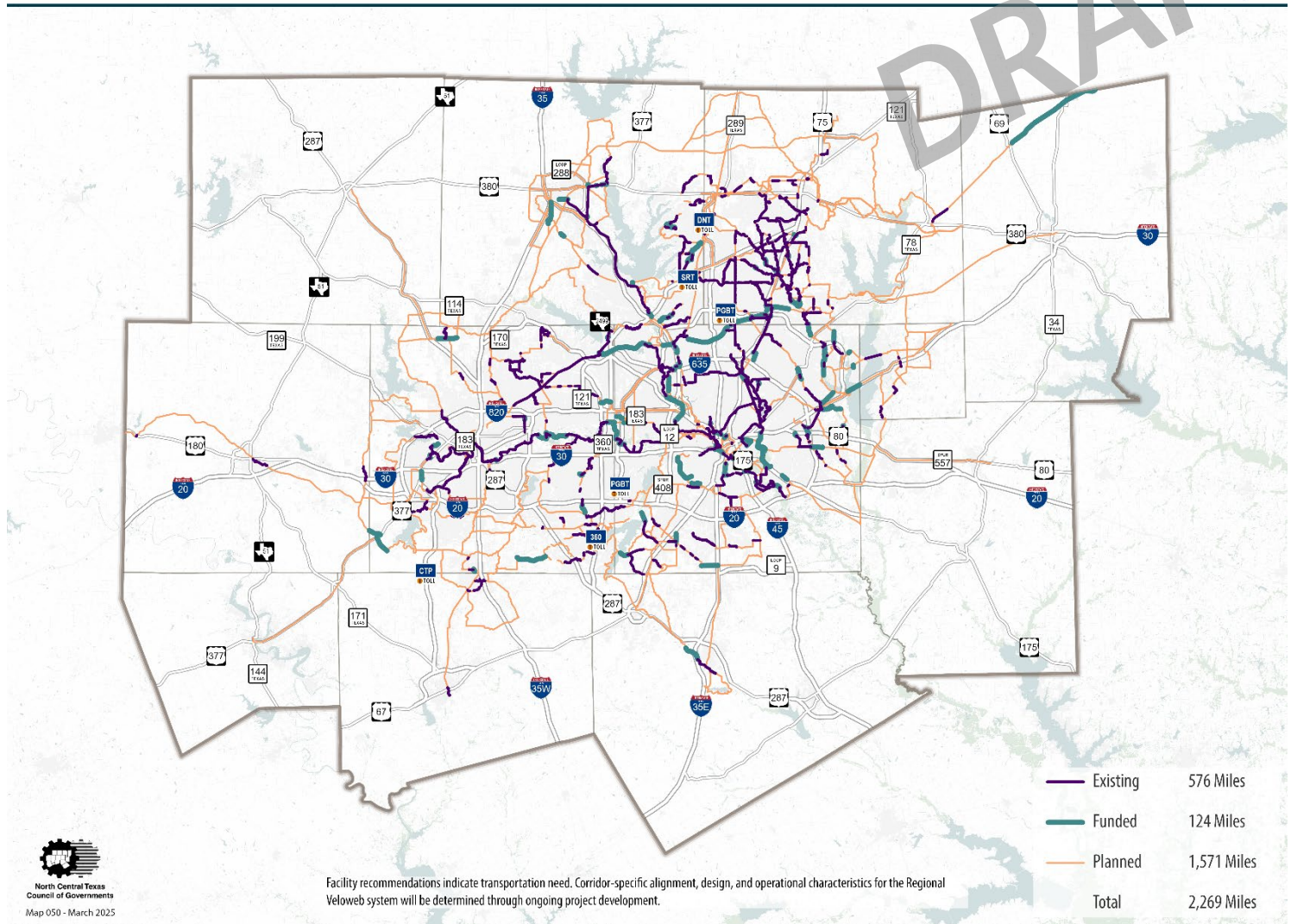
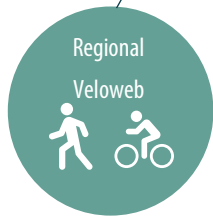


# Active Transportation Recommendations

Regional Veloweb

MOBILITY 2050

## MOBILITY 2050



# The Nondiscrimination Analysis of Mobility 2050 projects found no disparate impacts.

## What is it?

The analysis evaluates whether transportation investments in Mobility 2050 disproportionately impact protected populations (minority and low-income communities) under Title VI of the Civil Rights Act.

## Why do we do it?

Federal law requires MTPs to assess whether projects result in disparate benefits or burdens to different population groups, ensuring fair access to transportation improvements.

## What did we find?

The analysis of job access and congestion levels found **no disparate impacts**. Mobility improvements benefit both protected and non-protected populations, with similar changes in congestion.

# Schedule to Adoption

Time Frame	Milestone
January 2025	Financial Plan and Emerging Focus for Plan (Information)
March 2025	Demographic Review and Plan Recommendations (RTC Action, STTC Information)
April-May 2025	Required 60-day Public Comment Period May – STTC Action (Plan and Air Quality)
June 2025	RTC Action to Adopt Mobility 2050
July – December 2025	Federal Transportation Conformity Review Period

*Further details on all Policies, Programs, and Projects in  
Mobility 2050 can be found online at  
[www.nctcog.org/planinprogress](http://www.nctcog.org/planinprogress).*



# Mobility Plan Contacts



Amy Johnson

Principal Transportation Planner

[ajohnson@nctcog.org](mailto:ajohnson@nctcog.org) | 817-704-5608



Brendon Wheeler, P.E., CFM

Program Manager

[bwheeler@nctcog.org](mailto:bwheeler@nctcog.org) | 682-433-0478



Dan Lamers, P.E.

Senior Program Manager

[dlamers@nctcog.org](mailto:dlamers@nctcog.org) | 817-695-9263