

# Innovating GIS with AI Assistants: Enhancing Data & Decision-Making



Copyright © 2025 Esri.  
All rights reserved.

# ArcGIS AI Assistants

## Streamlining your work and making GIS easier

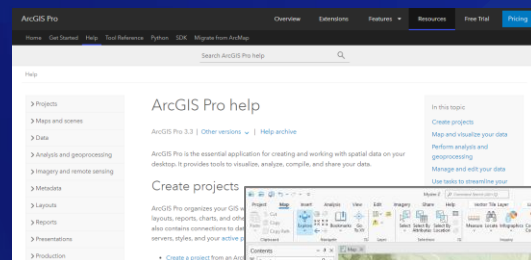
### Assistants for..

- App creation
- Mapping
- Learning
- Coding
- Storytelling
- ...

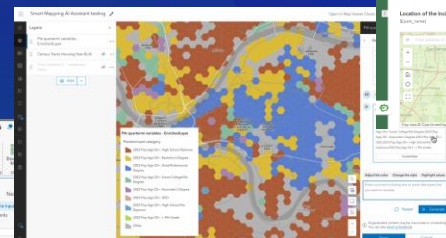
### Available now

- Business Analyst (Preview)
- Survey123 (Preview)
- Pro (Private Beta)
- Arcade (Beta)
- Hub (Beta)
- StoryMaps (Beta)
- Documentation (Beta)
- And more...

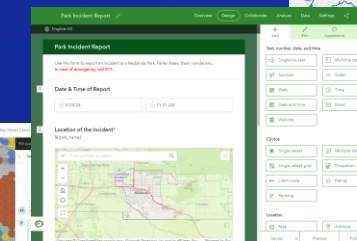
### Documentation



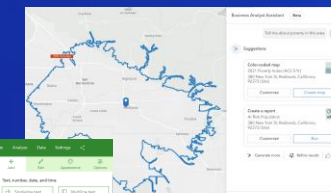
### Map Viewer & Arcade



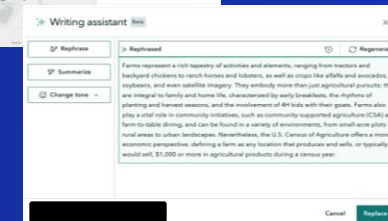
### Survey123



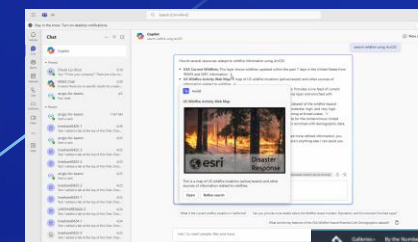
### Business Analyst



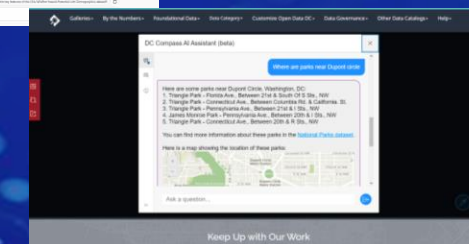
### StoryMaps



### ArcGIS for Microsoft Teams



### ArcGIS Hub



### ArcGIS

Inspiring and augmenting your power as a user

# ArcGIS Assistants (Online) | Release Plan \*



\* Tentative release plan. Subject to change.

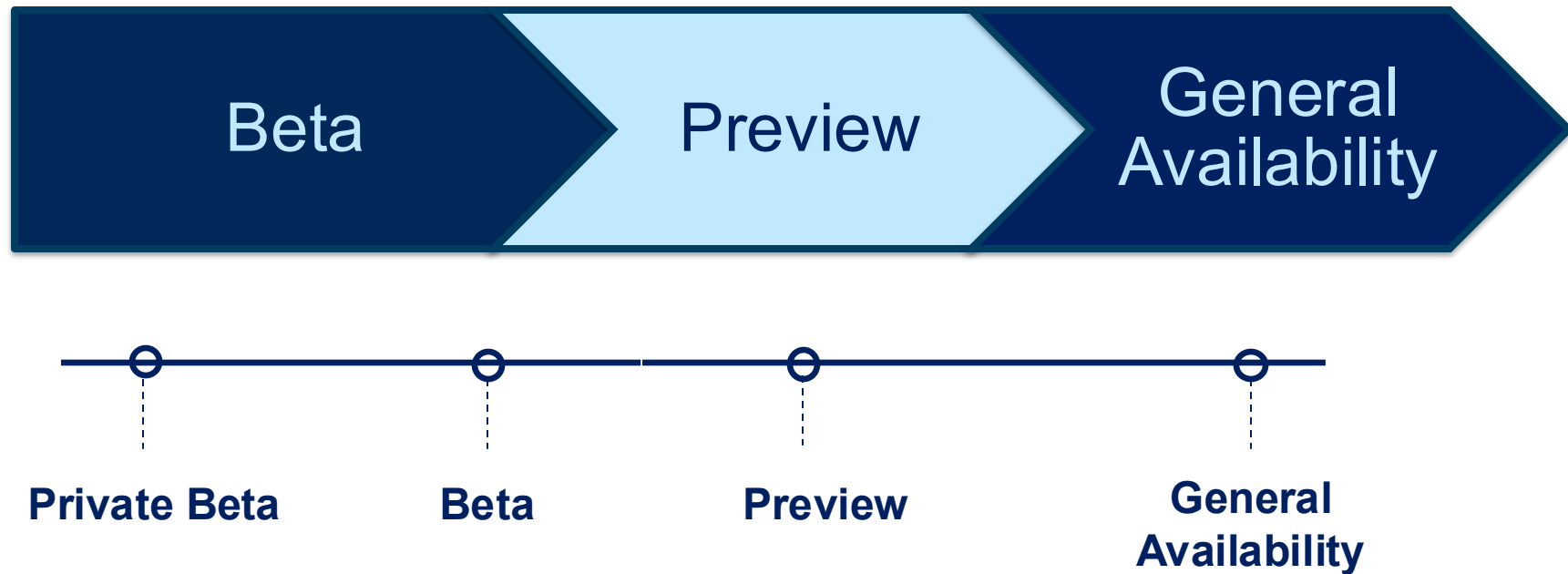


# ArcGIS Assistants (Online) | Release Plan \*



\* Tentative release plan. Subject to change.

# What is Preview?

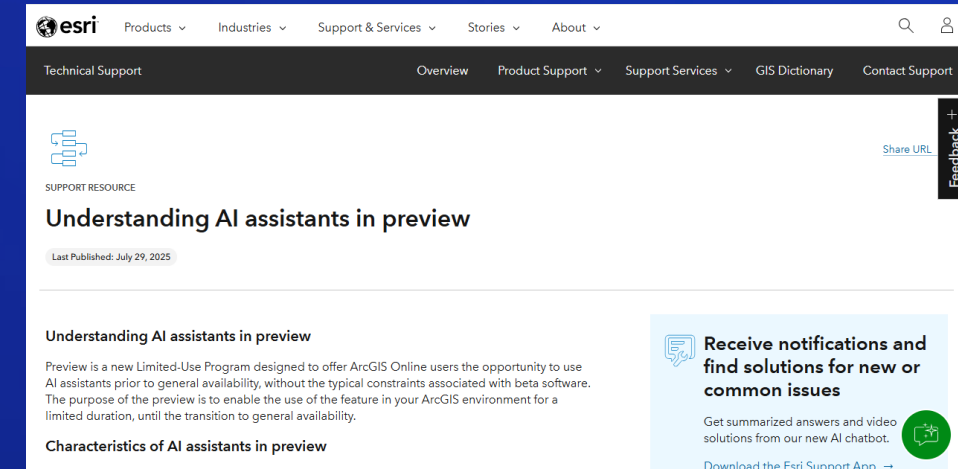


# AI assistants preview

What does preview really mean?



- AI assistants in preview :
  - Have already gone through a Beta phase
  - Fully documented and functionally complete
  - Security baseline validated and Transparency card available
  - Available for use at no additional cost while in preview
- Learn more about AI Assistants Preview
  - Survey123 web designer
  - Translation assistants in Survey123 and Instant Apps
  - Business Analyst
  - Documentation (Preview planned Online 25.R3 update)
  - Story Maps (Preview planned Online 25.R3 update)



# AI Assistants Currently in Preview

And upcoming Preview releases



- Survey123 (Web Designer)  
Azure AI Translator  
Security baseline validation  
Transparency card
- Instant Apps  
Security baseline validation  
Transparency card
- Business Analyst  
Security baseline validation  
Transparency card

*Documentation (Preview planned Online 2026 Q1 update)*

*StoryMaps (Preview planned Online 2026 Q1 update)*

## Transparency cards

The table below lists the AI transparency cards that provide in-depth details about our AI features, their structure, and the principles guiding their development and deployment.

- See [Transparency Card Structure document](#) for details concerning each field.
- See [Living Atlas](#) for Esri's GeoAI models.

### AI assistants

- ✓ ArcGIS Business Analyst assistant
- ✓ ArcGIS Survey 123 - AI assistant (Web Designer)
- ✓ ArcGIS Translation assistants
- 🔄 ArcGIS for Teams assistant
- 🔄 ArcGIS Hub assistant
- 🔄 ArcGIS Pro assistant
- 🔄 ArcGIS Arcade assistant
- 🔄 ArcGIS StoryMaps assistants
- 🔄 Documentation assistant

- ✓ Completed
- 🔄 In Process

### Deployment Status

Preview

### Help documentation

[Help document](#)

## AI Transparency Card: ArcGIS Translation assistants



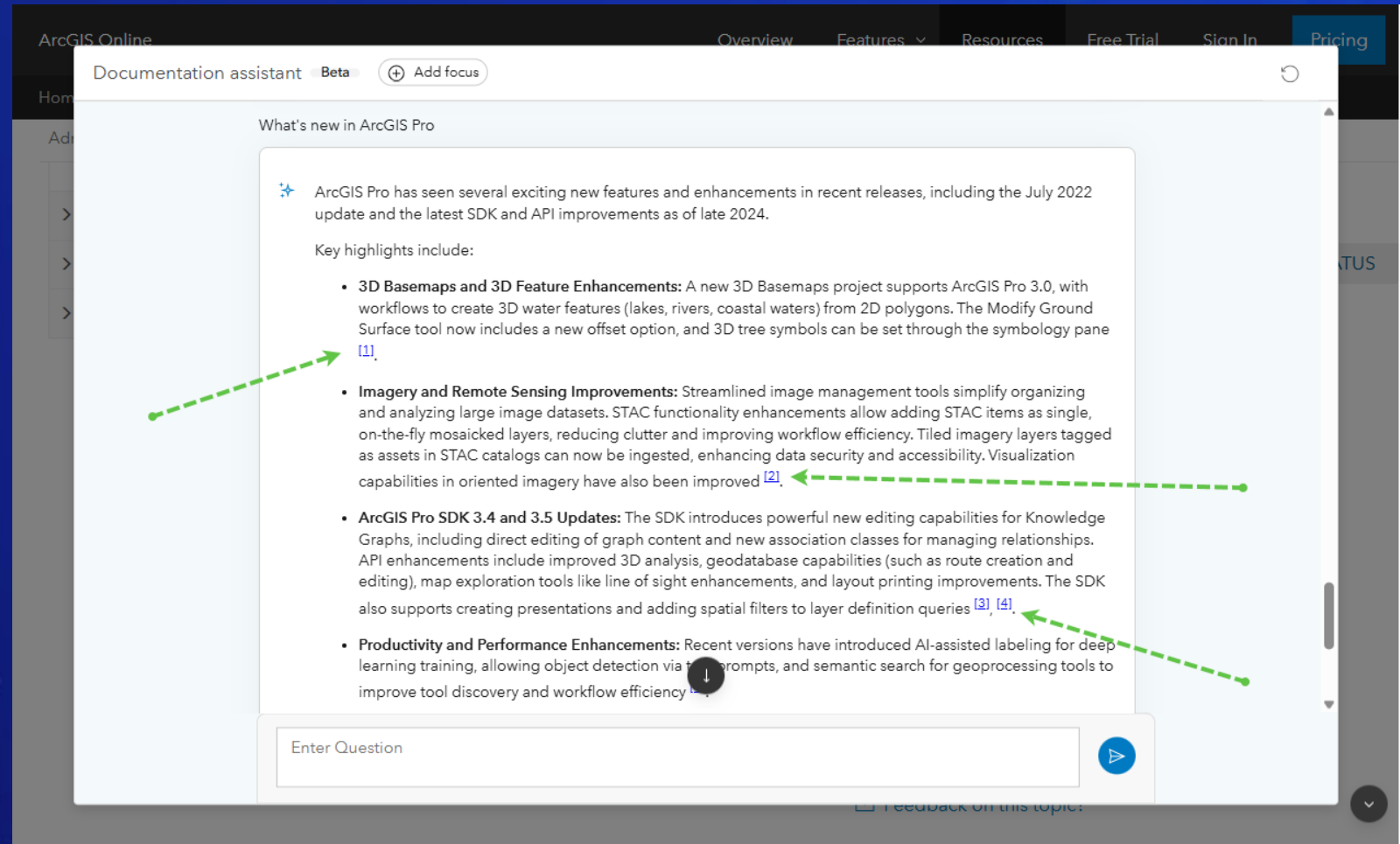
Section	Description	Response
Product - Name	ArcGIS product name	ArcGIS Survey123, ArcGIS Instant Apps
Product - Certification	Certification status of the ArcGIS Product or its subprocessors	Certified: FedRAMP Moderate
Product - Deployment	Deployment model of the product	SaaS
Name	AI feature name in the product	Translation Assistants (Preview): Survey123, Instant Apps
Purpose	Actions AI feature is expected to perform within the product	Automates text translation in supported ArcGIS workflows, allowing users to easily translate form content (e.g., questions and choices) in Survey123 into multiple languages. The new feature in ArcGIS Instant Apps is designed to help you translate your app-authored text into Instant Apps.
Release Status	Release status of AI feature	Preview
Certification	Certification status of AI feature or its subprocessors	None
Deployment	AI feature provided via what deployment model	SaaS
Management	How AI feature can be enabled or disabled?	Opt-in by AGO Administrator
Management - Feedback	Can/how user AI feedback be enabled or disabled?	Not utilized
Management - Telemetry	How user AI telemetry data can be enabled or disabled?	EUE: Admin Config, Feature Specific: None, Subprocessors: Required
Prompt Stored	Are prompts submitted to the AI stored?	No
Response Stored	Are AI-generated responses stored?	No
Personal Data	Is personal data in training, testing, or validation datasets?	No
Processing Location	Where data is processed across the product, feature, and LLM levels, including details on any subprocessors	Product: US AGO Infrastructure, Feature: US AGO Infrastructure, LLM: US Microsoft Azure AI Translator subprocessor.
Intended Users	Primary intended users of the AI feature	GIS Analysts, Survey Creators
Out-of-Scope Uses	Scenarios AI feature may not perform accurately or reliably	Translating content not directly related to ArcGIS workflows, outside supported languages, and content where nuance, confidentiality or tone are critical.
Key Function	Key capabilities and how the AI feature enhances workflows	Automate: AI feature automates translation tasks
Model Type & Technique	AI model type and technique	Classification Model: Neural machine translation
Model Used	Specific model(s) used, such as GPT-4, T5, etc.	Microsoft Azure AI Translator Version 3.0
Esri AI Framework Use	Utilizes Esri's AI Framework to process customer data	No

# Documentation assistant

What's new. October 2025 Update

- From Beta to Preview
  - Security baseline validation
  - Transparency card
- Much faster!
  - GPT4o to GPT4.1
  - Many optimizations
- Higher quality responses
  - Leveraging user feedback
- Improved content presentation
  - Embedded images
  - Inline citations

• [Learn more](#)

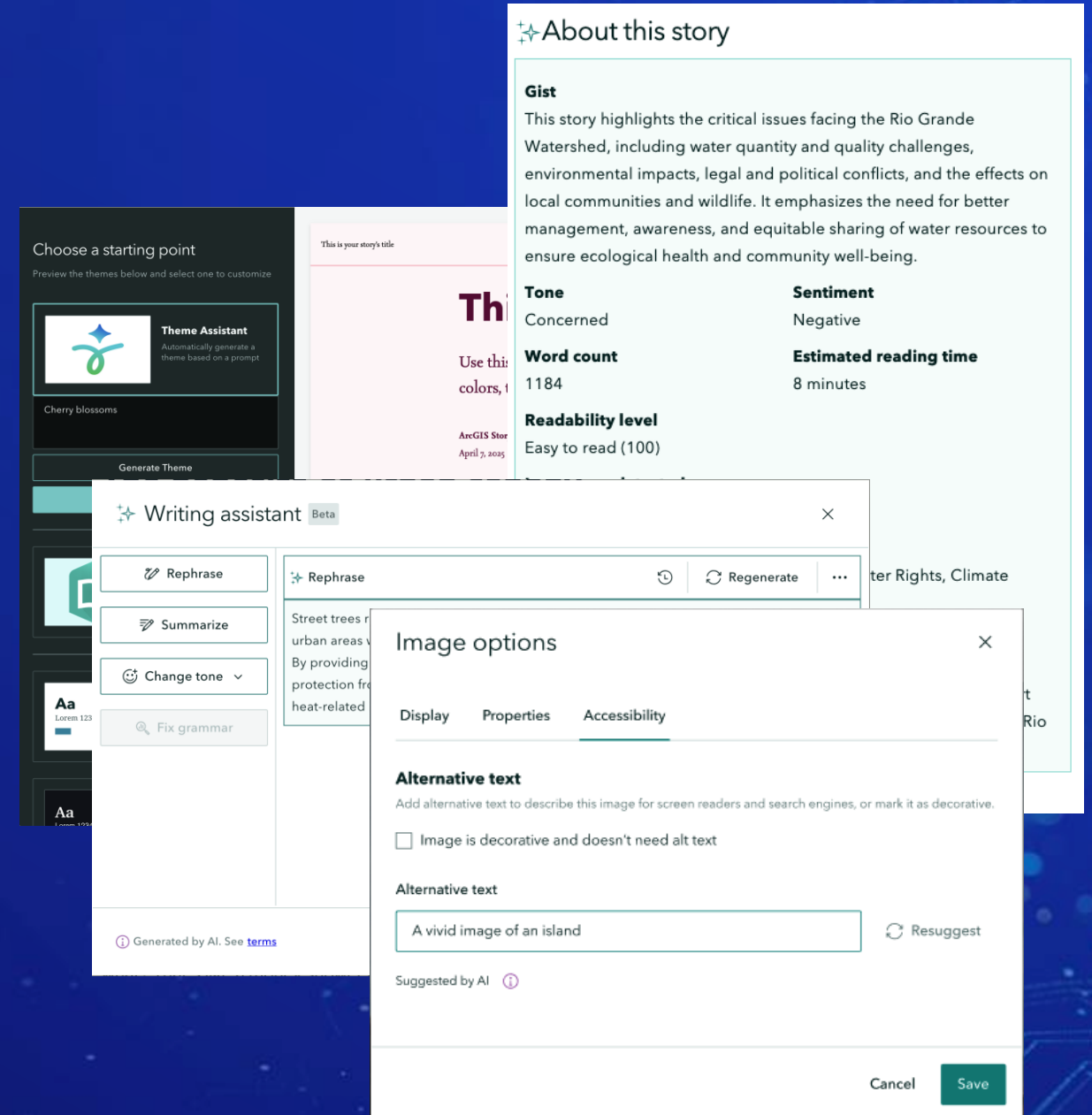




# StoryMaps assistant (beta)

A companion for better storytelling

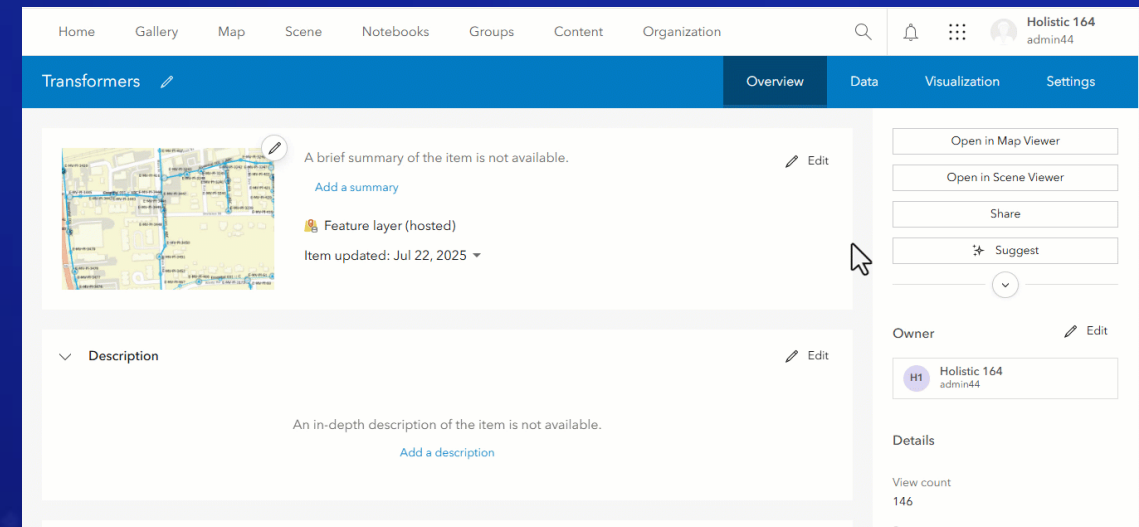
- Make your stories more accessible
- Learn about your own story gist, tone and estimated reading time
- Refine the style and tone of your writing
- Ask the assistant to suggest a theme...
- **Preview planned for Online 25.R3**
  - Transparency Card
  - Security baseline validated
- [Learn more](#)



# Item details assistant

Document your ArcGIS items for discovery and effective use

- Item metadata is key for discoverability and effective use by AI agents (and people!)
- Suggestions to help you document ArcGIS items
  - Hosted Feature Layers
    - Title, Summary, Description
    - Fields (Display name/alias, Description, Value Type)
- Release plan:
  - ArcGIS Enterprise 12.0 (Beta)
  - ArcGIS Online R3 2025 (Beta)



## Water Wells Panama

Overview

Data

Visualization


Usage

Settings



A brief summary of the item is not available.

[Add a summary](#)

 Feature layer (hosted)

Item updated: Sep 12, 2025 ▼


 Edit

Open in Map Viewer



Open in Scene Viewer

Share

 Suggest



### Owner

IH

Ismael Holistic13  
devUser13

### Details

View count

464

Source

### ▼ Description

 Edit

An in-depth description of the item is not available.

[Add a description](#)

Water Wells and Springs in Panama

← → ↺

https://esriholicdev.mapsdevext.arcgis.com/home/item.html?id=6cde148a9c1847209937549dfab656d2#overview


☆ 🔍 🌐

Home Gallery Map Scene Groups Content Organization

🔍 🔔 ⋮ 👤 Ismael Holistic13 devUser13

Water Wells and Springs in Panama

OverviewDataVisualizationUsageSettings



Comprehensive geographic data on water wells and springs across Panama, supporting water resource management and environmental planning.

📁 Feature layer (hosted)

Item updated: Sep 12, 2025

Edit

Open in Map Viewer

Open in Scene Viewer

Share

Suggest

Owner

IH

Ismael Holistic13 devUser13

Details

unt

Source

Description

This Feature Service provides detailed geographic information on water wells and springs located throughout Panama. It represents these water sources as point features and includes essential attributes such as the unique identifier for each source, its origin (well or spring), and its primary use, which encompasses domestic, agricultural, industrial, and tourism purposes.

📍 Geographic Coverage: The dataset covers the entire country of Panama, including detailed administrative divisions, providing comprehensive spatial context for each water source.

Item successfully updated.

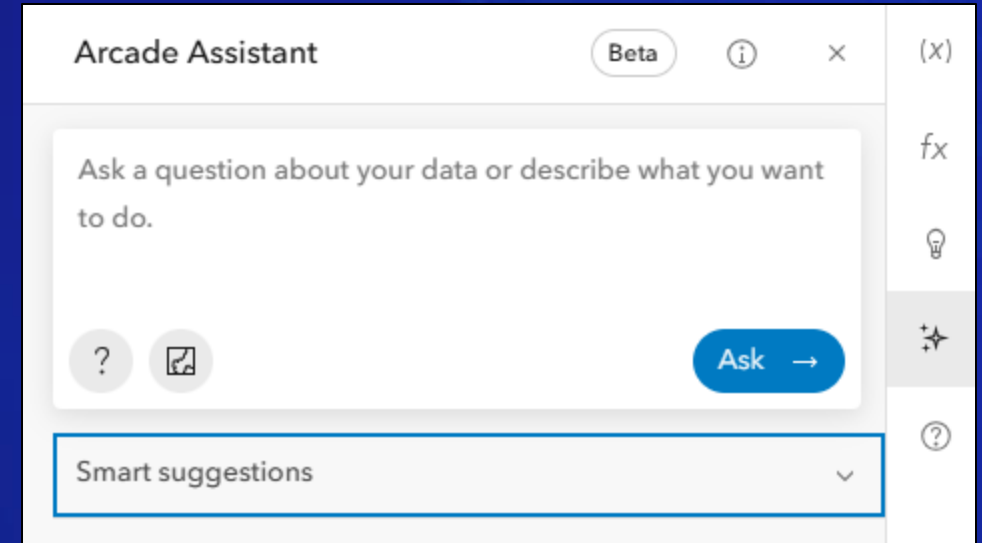


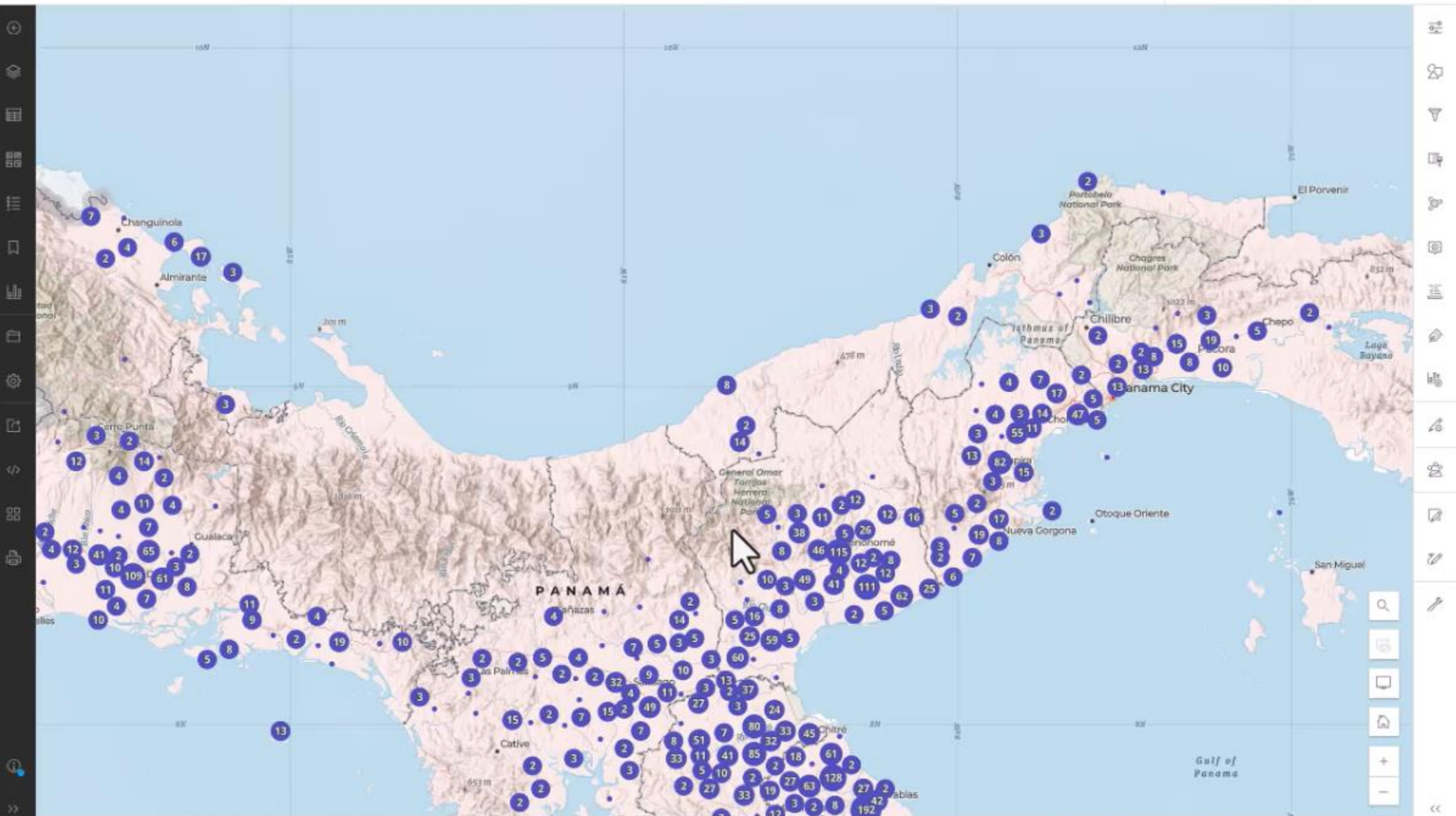
# Arcade Coding Assistant (beta)

What's new. October 2025 Update and beyond

- Initially in Map Viewer (June 2025)
  - [Announcement in ArcGIS Blog](#)
- Expanding in ArcGIS Online 25.R3
  - Scene Viewer
  - Field calculations in map viewer, home app and web editor
- Support in ArcGIS Pro planned for 2026

Arcade assistant





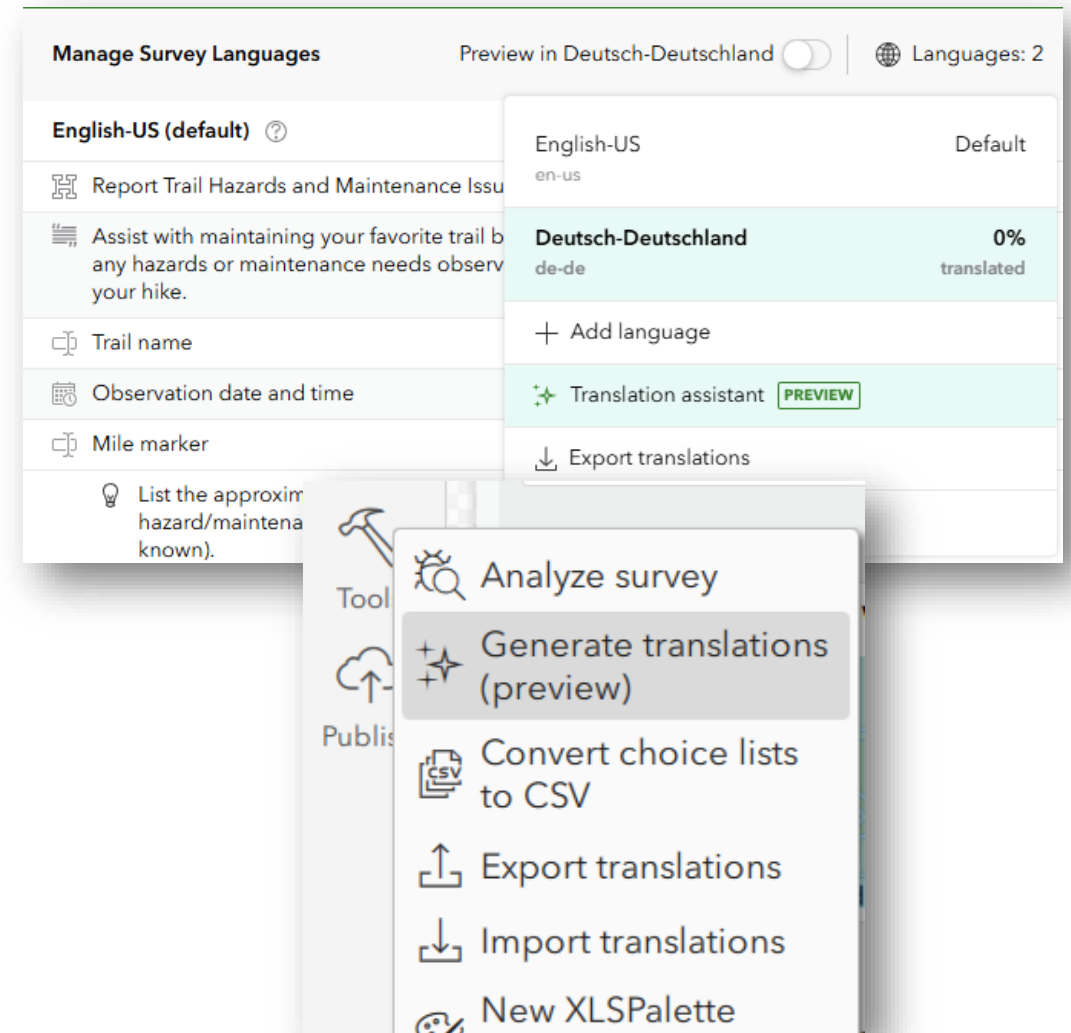
# ArcGIS Survey123

Preview



# Survey123 Translation Assistant

- Use AI to translate survey designs
- Verify by human translators for accuracy
- Requires at least one additional language
- Web designer
  - Defaults to replacing empty values
  - Optionally replace existing translations
- Connect
  - Requires Python configured with Survey123 Connect
  - Overwrites existing translations

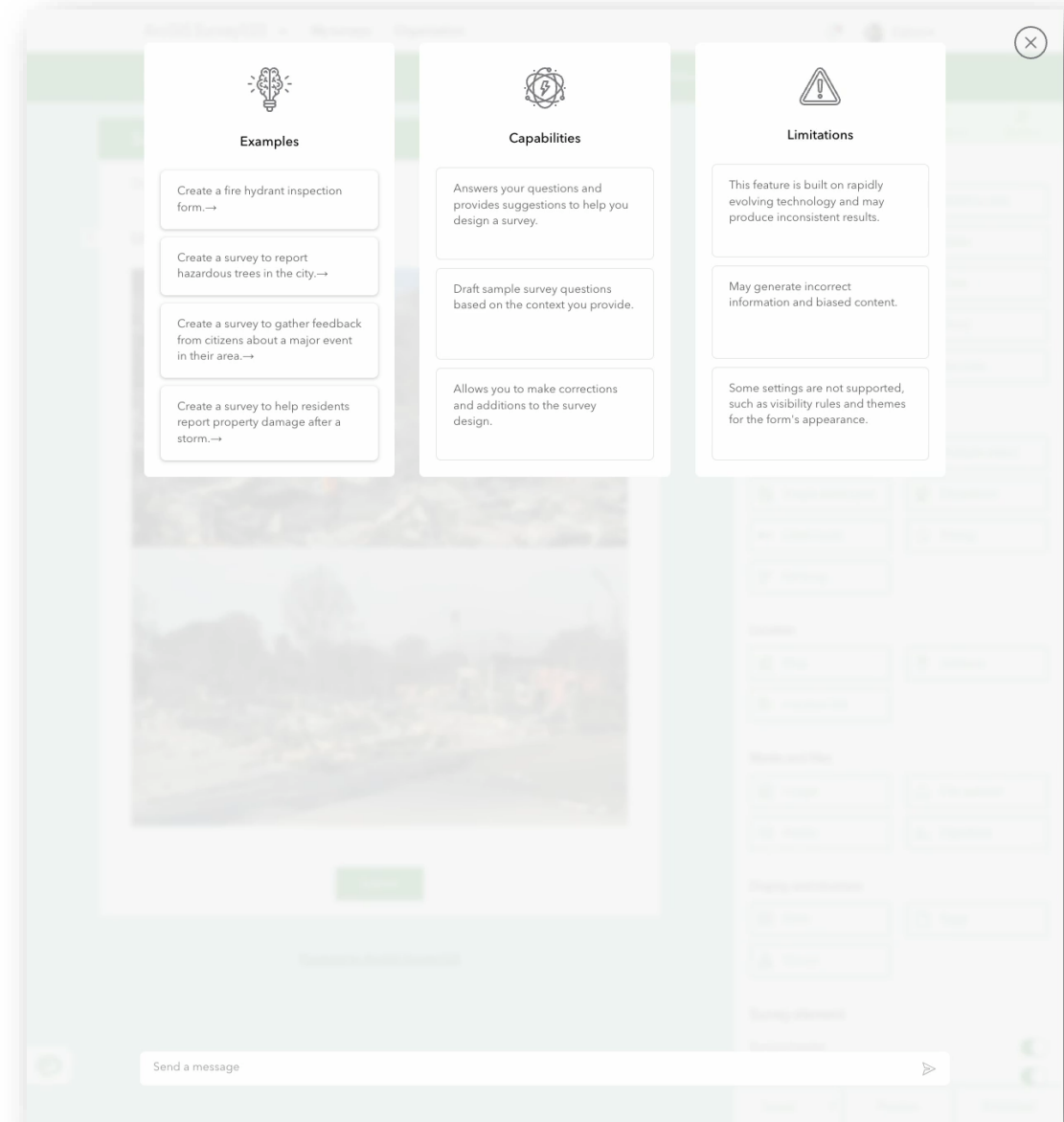




# Survey123 Web Designer Assistant



- Use AI to design surveys by a conversation
- Examples:
  - Design a survey for hydrant inspection
  - Insert an image question after question #1
  - Update the title of question #2
  - Bring the designed survey into Survey123
- Preview release
- Support Group / Page questions now



# ArcGIS Pro

AI Assistant  
Beta

# ArcGIS Pro AI Assistant

## Capabilities

Graph queries: Generate cypher queries

Query layer: Generate SQL and create query layer

Actions: With natural language inputs

Help/Documentation Assistant: Find information from ArcGIS

# ArcGIS Pro AI Assistant

## Installation and Usage



To access and use the assistant, complete the following steps:

- Ensure that ArcGIS Pro 3.5 is installed
- Install the ArcGIS Pro AI Assistant by downloading the installer
- Once installation is complete, start ArcGIS Pro and remember to sign in to an ArcGIS organization that allows the use of beta features and allows the use of the Pro Assistant.

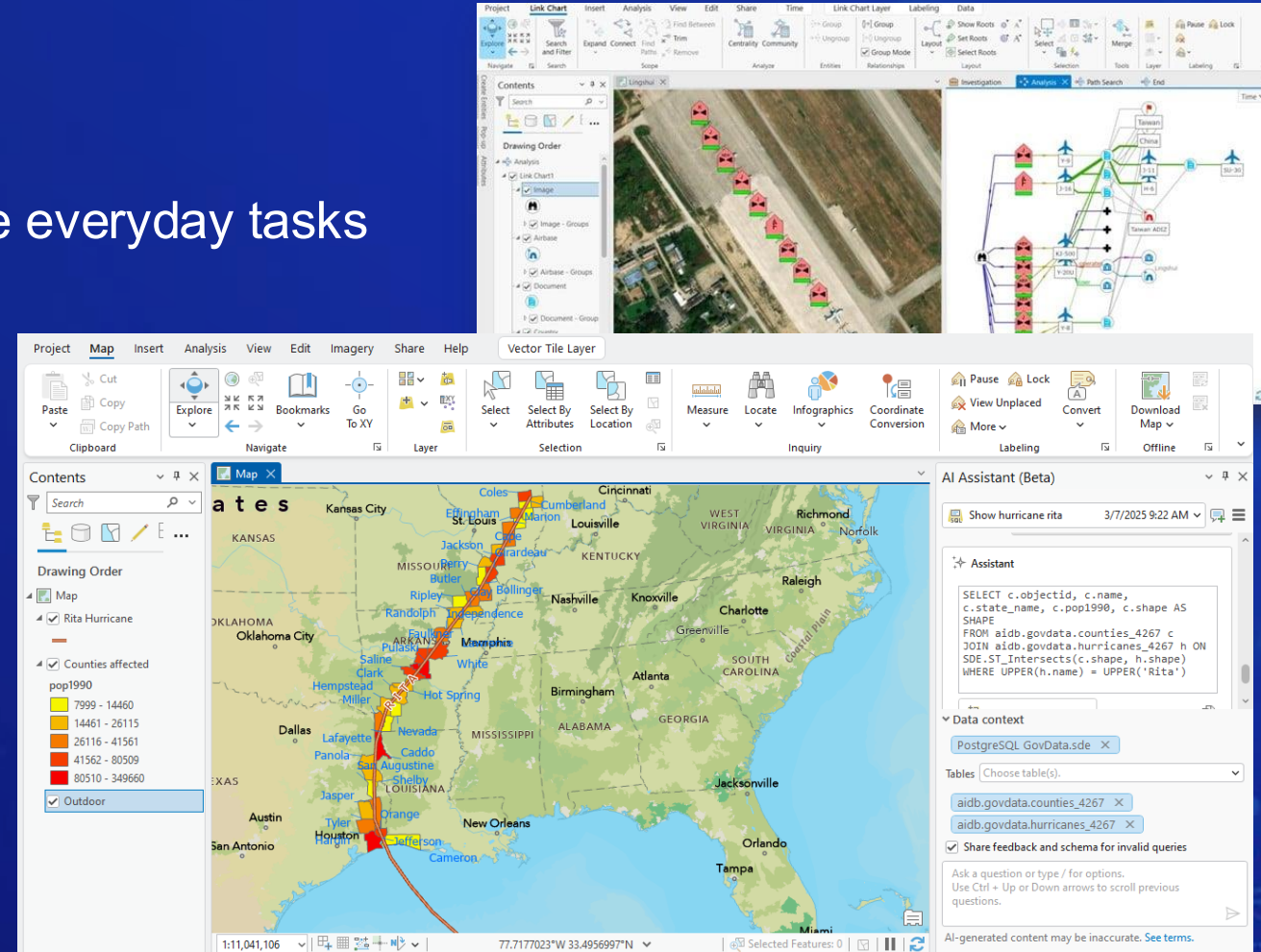
ArcGIS Pro Assistant (beta)  
Available in 3.5

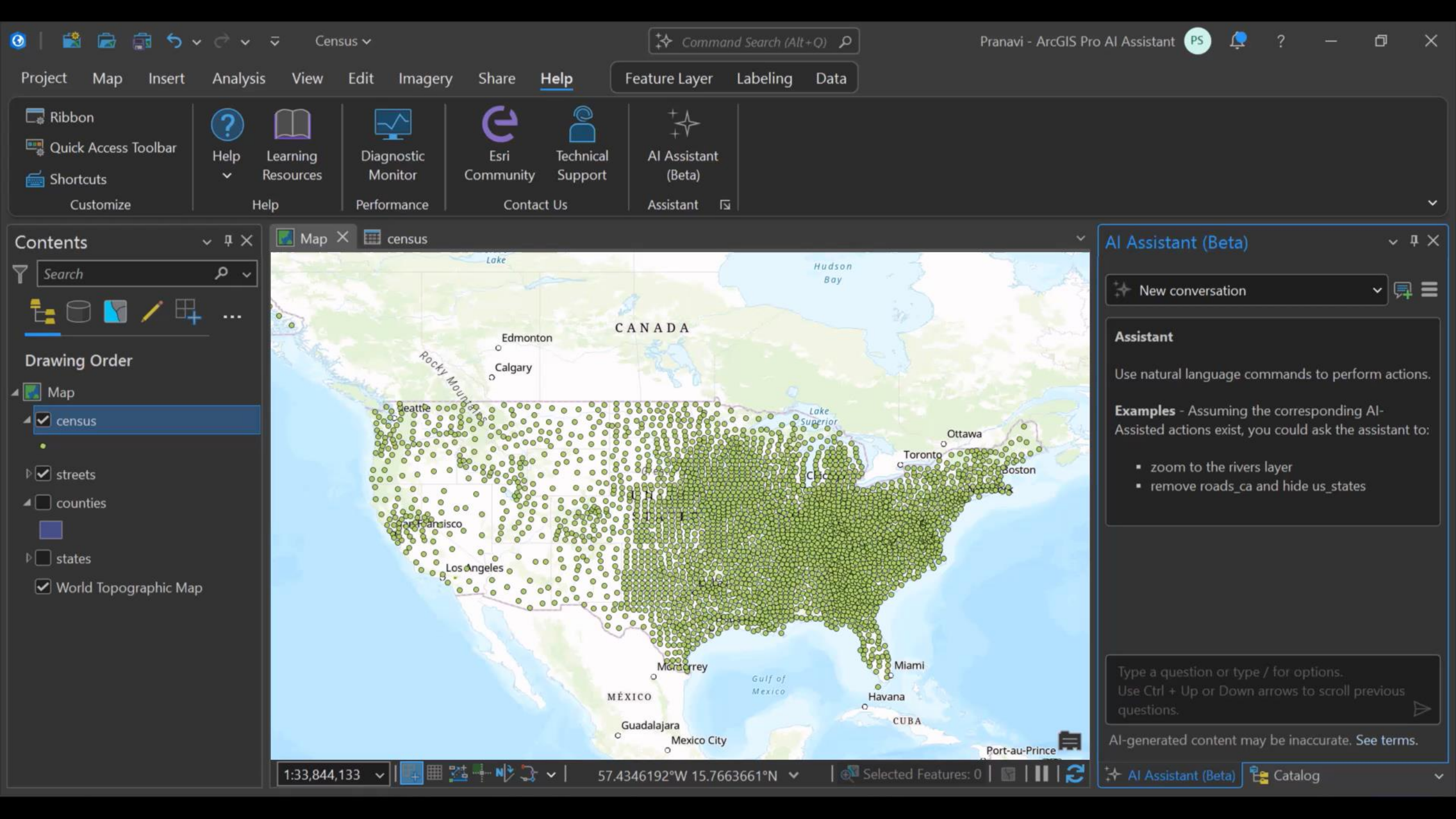


# ArcGIS Pro assistant (private beta)

Available by-invitation-only

- An in-app assistant to help you streamline everyday tasks
- Use natural language to:
  - Explore ArcGIS Pro documentation
  - Generate Query Layer SQL expressions
  - Generate Knowledge Graph Cypher queries
  - Trigger common actions in ArcGIS Pro
- Complete this [form](#) to request access
- Big update with 3.6!
  - Better actions
  - ArcPY code generation







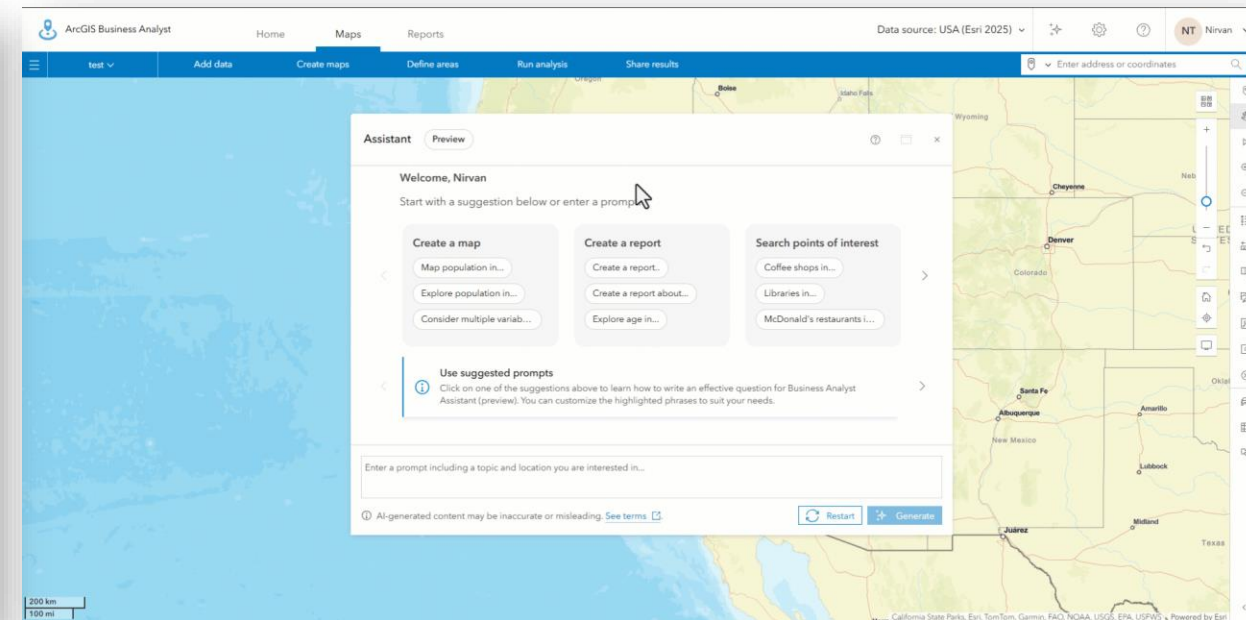
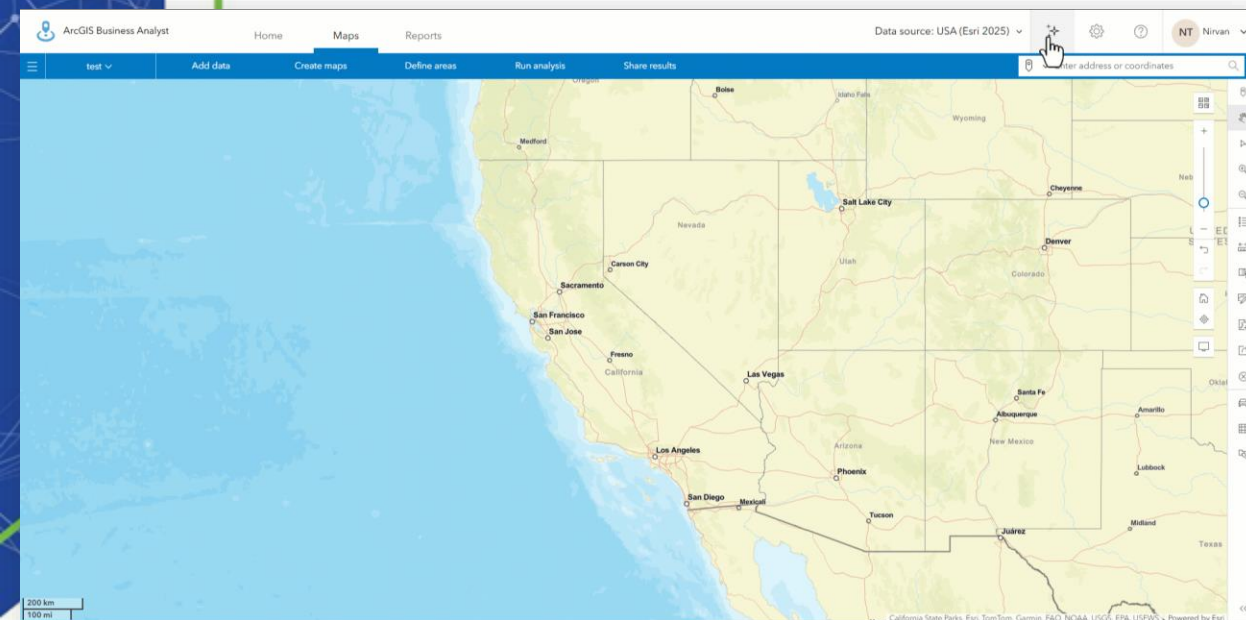
# ArcGIS Business Analyst

Preview

# Prompt Templates

Assistant prompt templates provide a guide to writing well designed prompts

Highlighted areas show parts of text that are crucial for good responses from the assistant





# Create a Map

Create a basic map by providing an area and a topic:

- Map average age in blue by block group in Denver
- Create a map of population in California

Assistant Preview

Welcome, Nirvan

Create a map of population in California

I can help you visualize selected variables in a color-coded map.

**Color-coded maps**

Area of interest

California (06)  
US.States

Variable

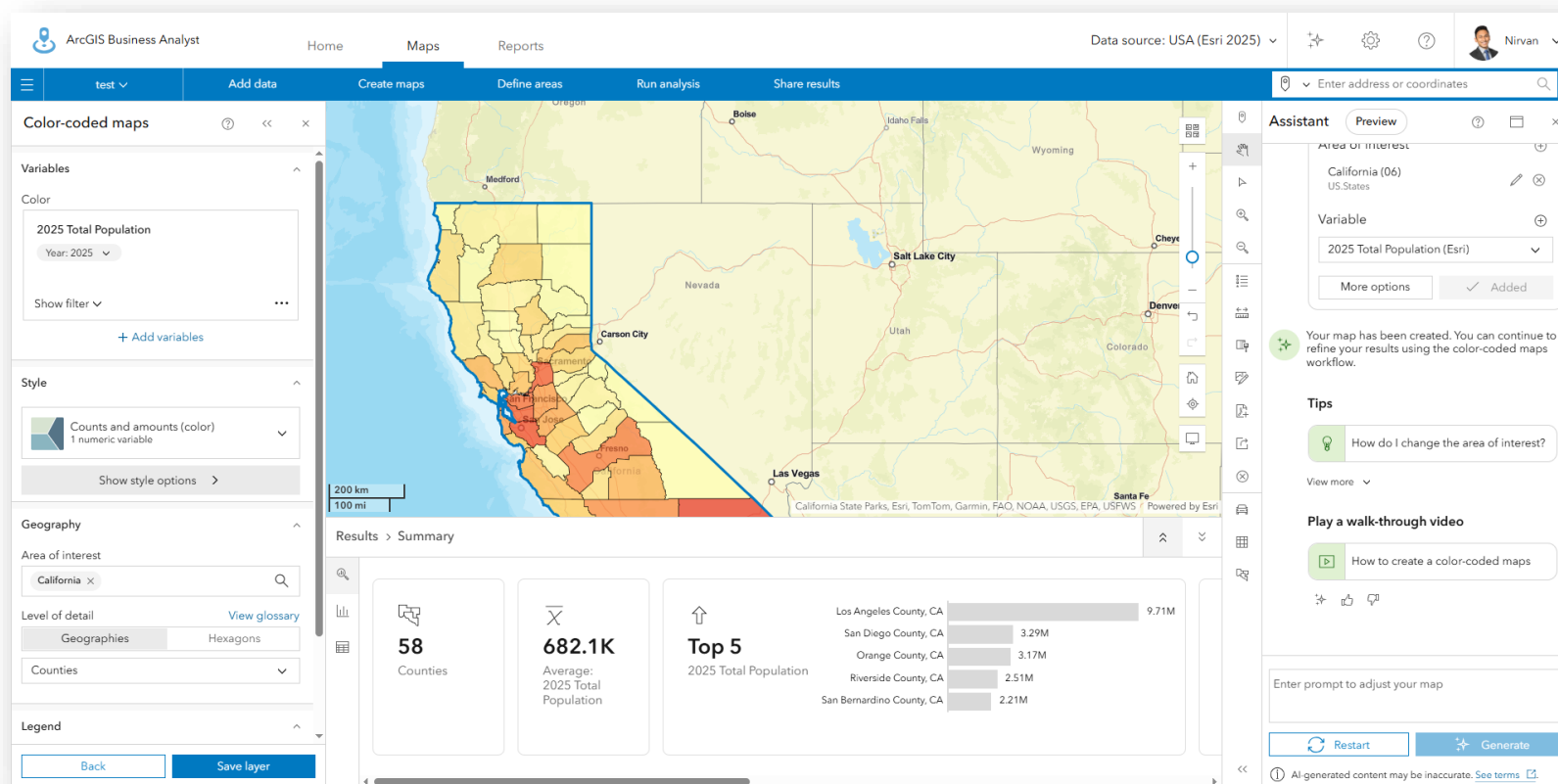
2025 Total Population (Esri)

More options Create map

Enter prompt

Restart Generate

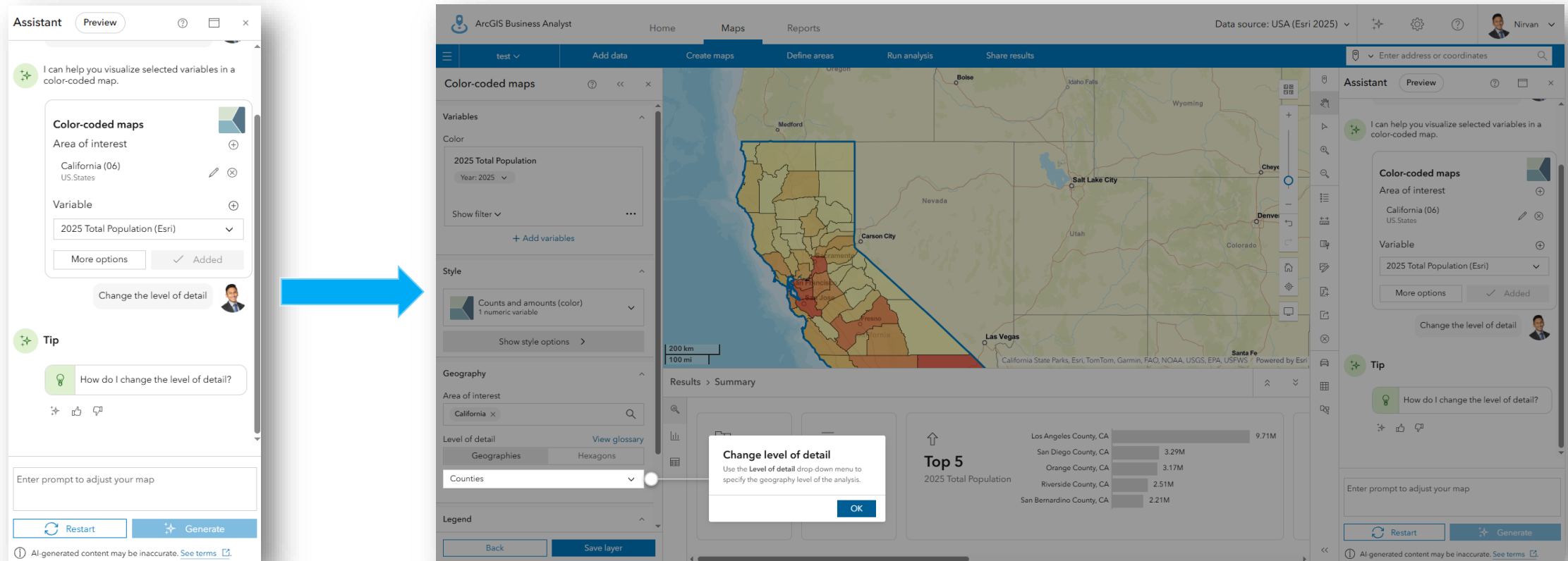
AI-generated content may be inaccurate. [See terms](#)



# Tips

Questions related to the workflow provide context specific tips:

- *How do I change the map color*
- *How do I change the level of detail*



The screenshot displays the ArcGIS Business Analyst Assistant interface. The Assistant panel on the left shows a tip: "I can help you visualize selected variables in a color-coded map." Below this, the "Color-coded maps" section is configured with "Area of interest" set to "California (06) US States" and "Variable" set to "2025 Total Population (Esri)". A blue arrow points from the Assistant panel to the main map area. The map area shows a map of California with a color-coded overlay. A "Change level of detail" dialog box is open, prompting the user to "Use the Level of detail drop-down menu to specify the geography level of the analysis." The dialog box has an "OK" button. The Assistant panel on the right shows the same configuration, but the tip is now "How do I change the level of detail?".

**Color-coded maps**

Area of interest

California (06)  
US States

Variable

2025 Total Population (Esri)

More options

✓ Added

Change the level of detail

**Tip**

How do I change the level of detail?

Enter prompt to adjust your map

Restart

Generate

AI-generated content may be inaccurate. See terms

**ArcGIS Business Analyst**

Home Maps Reports

Data source: USA (Esri 2025)

test Add data Create maps Define areas Run analysis Share results

Enter address or coordinates

**Color-coded maps**

Variables

Color

2025 Total Population

Year: 2025

Show filter

+ Add variables

**Style**

Counts and amounts (color)

1 numeric variable

Show style options

**Geography**

Area of interest

California

Level of detail

Geographies Hexagons

Counties

Legend

Back Save layer

**Results > Summary**

**Top 5**

2025 Total Population

County	Population
Los Angeles County, CA	9.71M
San Diego County, CA	3.29M
Orange County, CA	3.17M
Riverside County, CA	2.51M
San Bernardino County, CA	2.21M

**Change level of detail**

Use the Level of detail drop-down menu to specify the geography level of the analysis.

OK

**Assistant**

Preview

I can help you visualize selected variables in a color-coded map.

**Color-coded maps**

Area of interest

California (06)  
US States

Variable

2025 Total Population (Esri)

More options

✓ Added

Change the level of detail

**Tip**

How do I change the level of detail?

Enter prompt to adjust your map

Restart

Generate

AI-generated content may be inaccurate. See terms

# Create a Point Site

Create a site around an address by specifying distance, site type and address:

- A site with a 20 minute walk time from 111 Harbor Dr, San Diego
- Create a 10 minute drive time site around 380 new York street, Redlands

Assistant Preview

Welcome, Nirvan

Create a 10 minute drive time site around 380 new york street, Redlands

I can help you define an area around a location, such as a ring, drive time, or walk time.

**Create site**

Location

380 New York St, Redlands, Cal...

Rings **Drive time** Walk time

Time 10 minutes

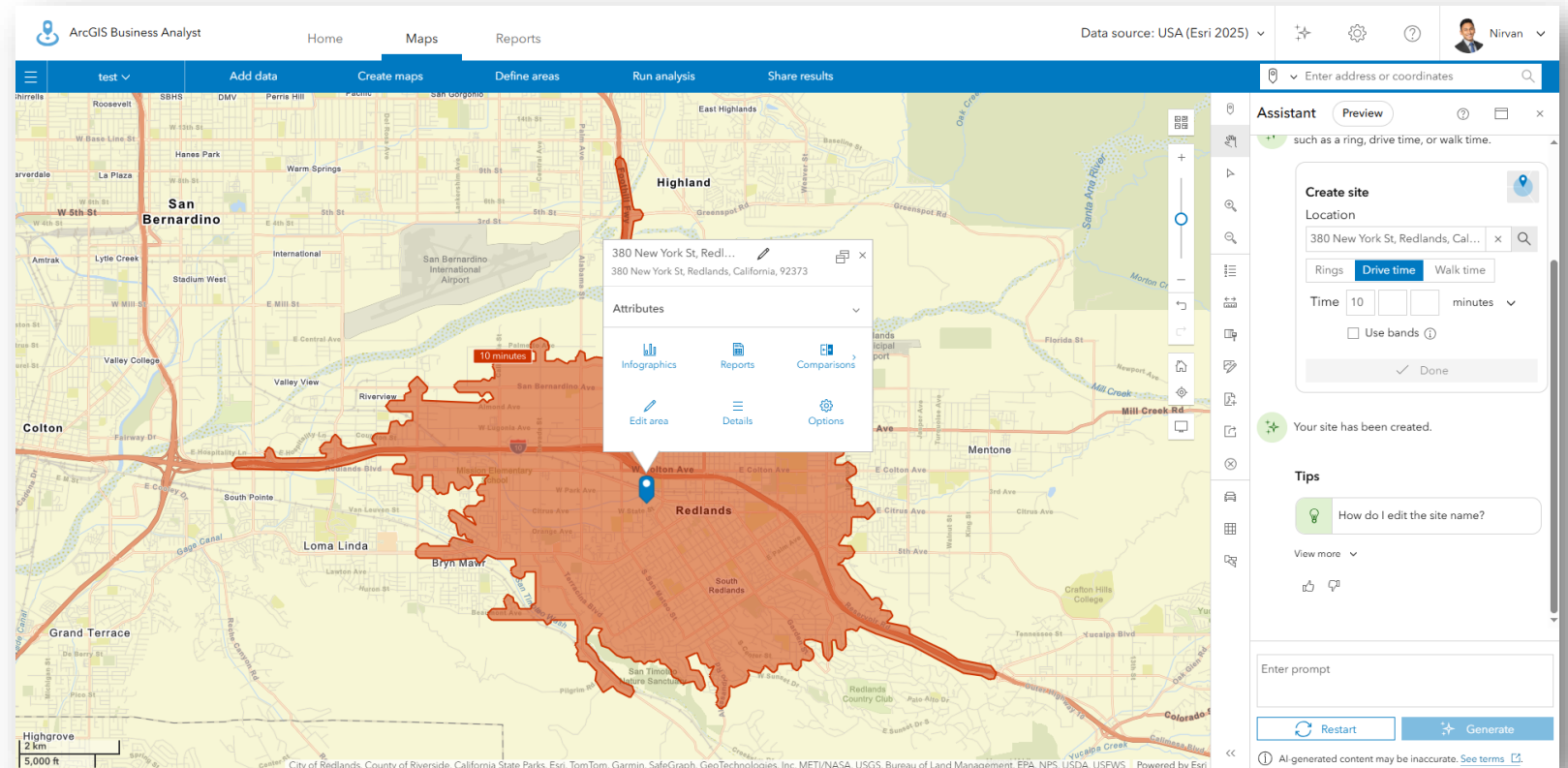
☐ Use bands

Create site

Enter prompt

Restart Generate

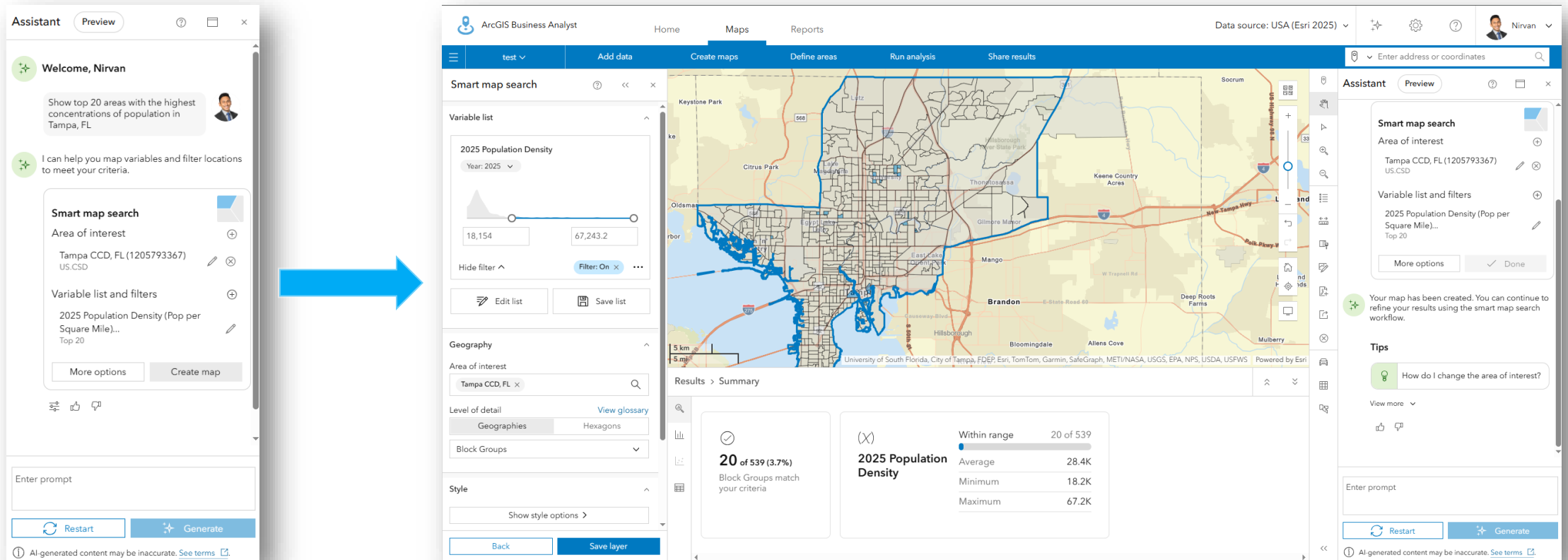
AI-generated content may be inaccurate. See terms



# Smart Map Search

Create a Smart Map by specifying topic, area, geography level and top n filter

- Find zip codes with household income greater than 100,000 in San Diego
- Show top 20 areas with the highest concentrations of population in Tampa, FL



The image displays the ArcGIS Business Analyst Smart Map Search interface, showing the workflow from the Assistant to the main map view.

**Assistant (Left Panel):**

- Welcome, Nirvan**
- Show top 20 areas with the highest concentrations of population in Tampa, FL**
- I can help you map variables and filter locations to meet your criteria.**
- Smart map search**
  - Area of interest:** Tampa CCD, FL (1205793367) US.CSD
  - Variable list and filters:** 2025 Population Density (Pop per Square Mile)... Top 20
  - Buttons:** More options, Create map
- Enter prompt**
- Buttons:** Restart, Generate
- Footer:** AI-generated content may be inaccurate. See terms

**Main Map View (Center):**

- Smart map search**
  - Variable list:** 2025 Population Density (Year: 2025) with a range slider from 18,154 to 67,243.2. Filter: On.
  - Geography:** Area of interest: Tampa CCD, FL. Level of detail: Geographies (selected), Hexagons. Block Groups.
  - Style:** Show style options >
  - Buttons:** Edit list, Save list, Back, Save layer
- Map:** A map of Tampa, FL, showing the selected area of interest and the resulting data points.
- Results > Summary**
  - 20 of 539 (3.7%)** Block Groups match your criteria.
  - 2025 Population Density**
    - Within range:** 20 of 539
    - Average:** 28.4K
    - Minimum:** 18.2K
    - Maximum:** 67.2K

**Assistant (Right Panel):**

- Smart map search**
  - Area of interest:** Tampa CCD, FL (1205793367) US.CSD
  - Variable list and filters:** 2025 Population Density (Pop per Square Mile)... Top 20
  - Buttons:** More options, Done
- Your map has been created. You can continue to refine your results using the smart map search workflow.**
- Tips:** How do I change the area of interest?
- View more**
- Enter prompt**
- Buttons:** Restart, Generate
- Footer:** AI-generated content may be inaccurate. See terms



# Benchmark Comparison

Compare two topics for an area or specific sites

- *What are the ZIP codes with the most doctors in Chicago*
- *Compare population and income for the sites on the map*

**Assistant** Preview

Welcome, Nirvan

Compare population and income for the sites on the map

I can help you analyze locations using comparison methods.

**Benchmark comparisons**

Area of interest

Convention Way, San Diego, California, 92101 ...

380 New York St, Redlands, California, 92377

Comparison methods

High to low

Variables

2025 Total Population (Esri)

2025 Per Capita Income (Esri)

Enter prompt

Restart Generate

AI-generated content may be inaccurate. See terms

**ArcGIS Business Analyst** Home Maps Reports

test Add data Create maps Define areas Run analysis Share results

Benchmark comparisons

Sites: 2

Expand rings, drive times, and walk times

Variables

Custom list

Variables: 2

Statistics

Enabling statistics adds them to the table.

Mean

Median

Standard deviation

Comparison method

Method

High to low

Style

Color ramp

Reverse order

Back Save layer

Results > Table

	Location	2025 Total Population	2025 Per Capita Income
1	Convention Way, San Diego, California, 92101 ...	124,873	\$54,384
2	380 New York St, Redlands, California, 92377	62,357	\$46,284

1 1 - 2 of 2 rows

Rows per page All (2)

**Assistant** Preview

California, 92101

380 New York St, Redlands, California, 92377

Comparison methods

High to low

Variables

2025 Total Population (Esri)

2025 Per Capita Income (Esri)

Added

Your map has been created. You can continue to refine your results using the benchmark comparisons workflow.

Tips

How do I change a variable?

View more

Enter prompt

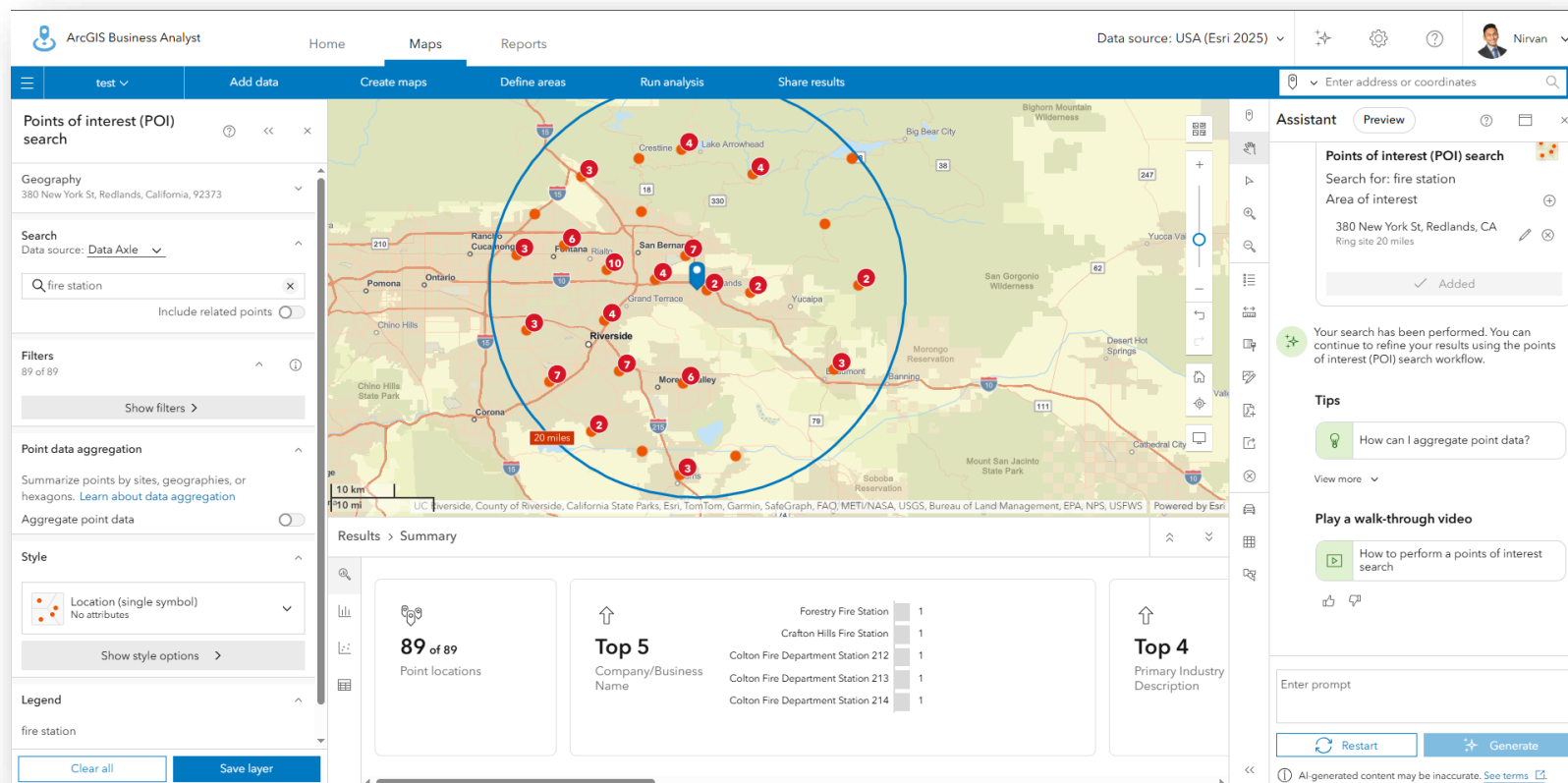
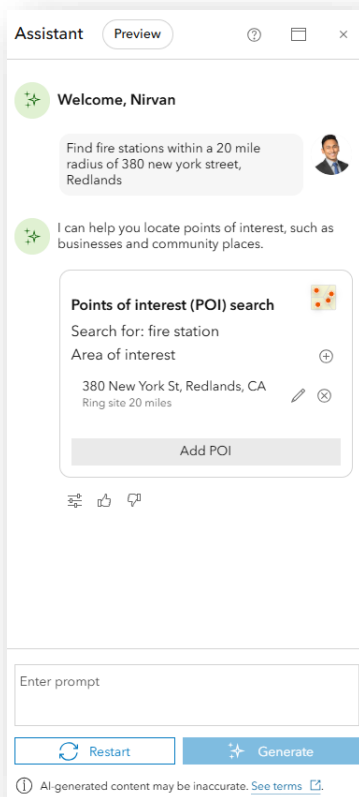
Restart Generate

AI-generated content may be inaccurate. See terms

# Complex Prompts

Specify a site and workflow to run around that site in a single prompt

- Create a poverty report within a 10-minute walk time of the convention center in San Diego
- Find fire stations within a 20-mile radius of 380 new york street, Redlands



# Multilingual Prompts

Six supported languages: English, Spanish, Portuguese, German, Japanese, French  
Web browser language must match the language of selected Country for best results

## Preferred languages

### Websites in your languages

Let websites know the languages you speak. They'll show content in those languages, when possible.

Add languages

1. French

2. English (United States)

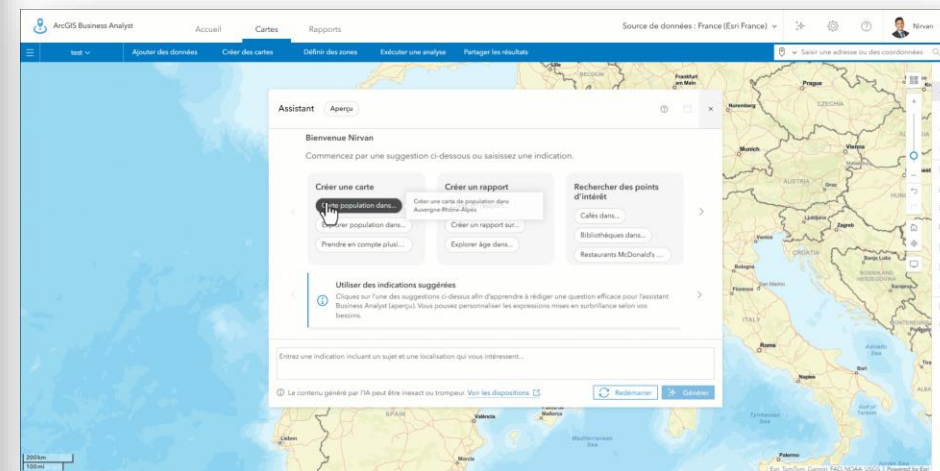
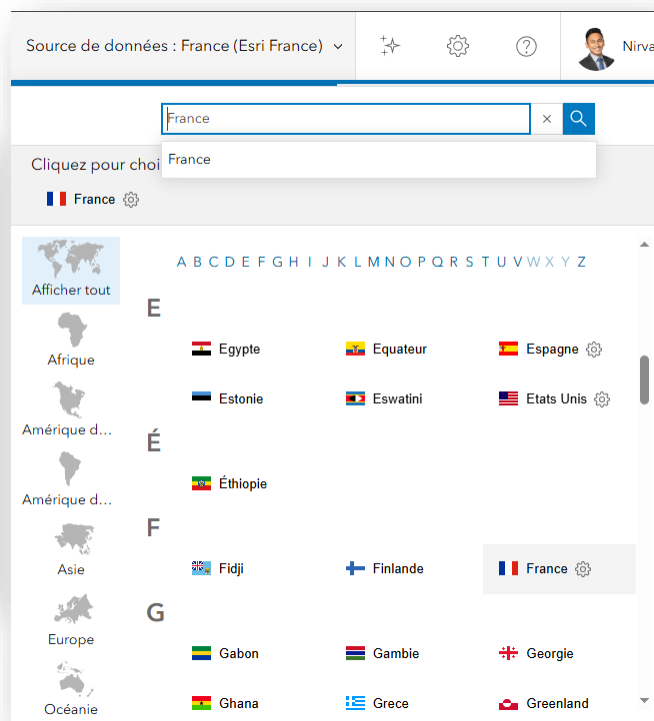
This language is used when translating pages

This language is used to display menus, settings, alerts, and other text in Chrome

3. Japanese

4. Spanish

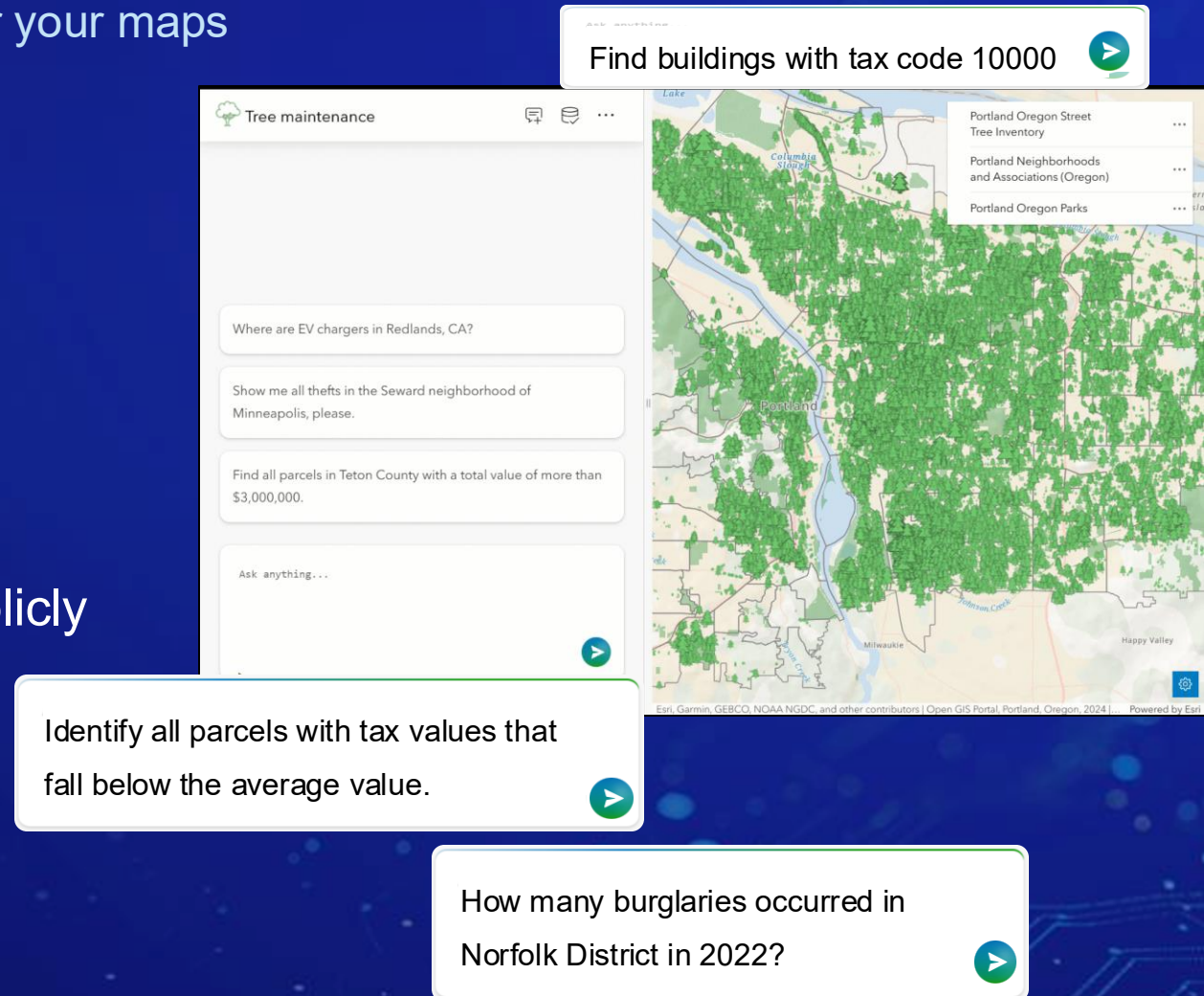
5. English



# Data Explorer Instant App template (beta coming in Q1 2026)

Create a modern, natural language experience for your maps

- Configurable Instant App template
- Enables natural language for:
  - Map exploration
  - Essential geographic analysis and filtering
  - Data summarization
- Share apps within your organization, or publicly





@arcgis-labs/ai-components

x

+

←

↺

https://arcgisdataexplorer.z13.web.core.windows.net

A

☆

⚙

⌵

👤

⋮

🌈

🗺

Data Explorer

💬

🗄

⋮

What is the total area of the city boundary polygons?

What is the average length of the city boundary polygons?

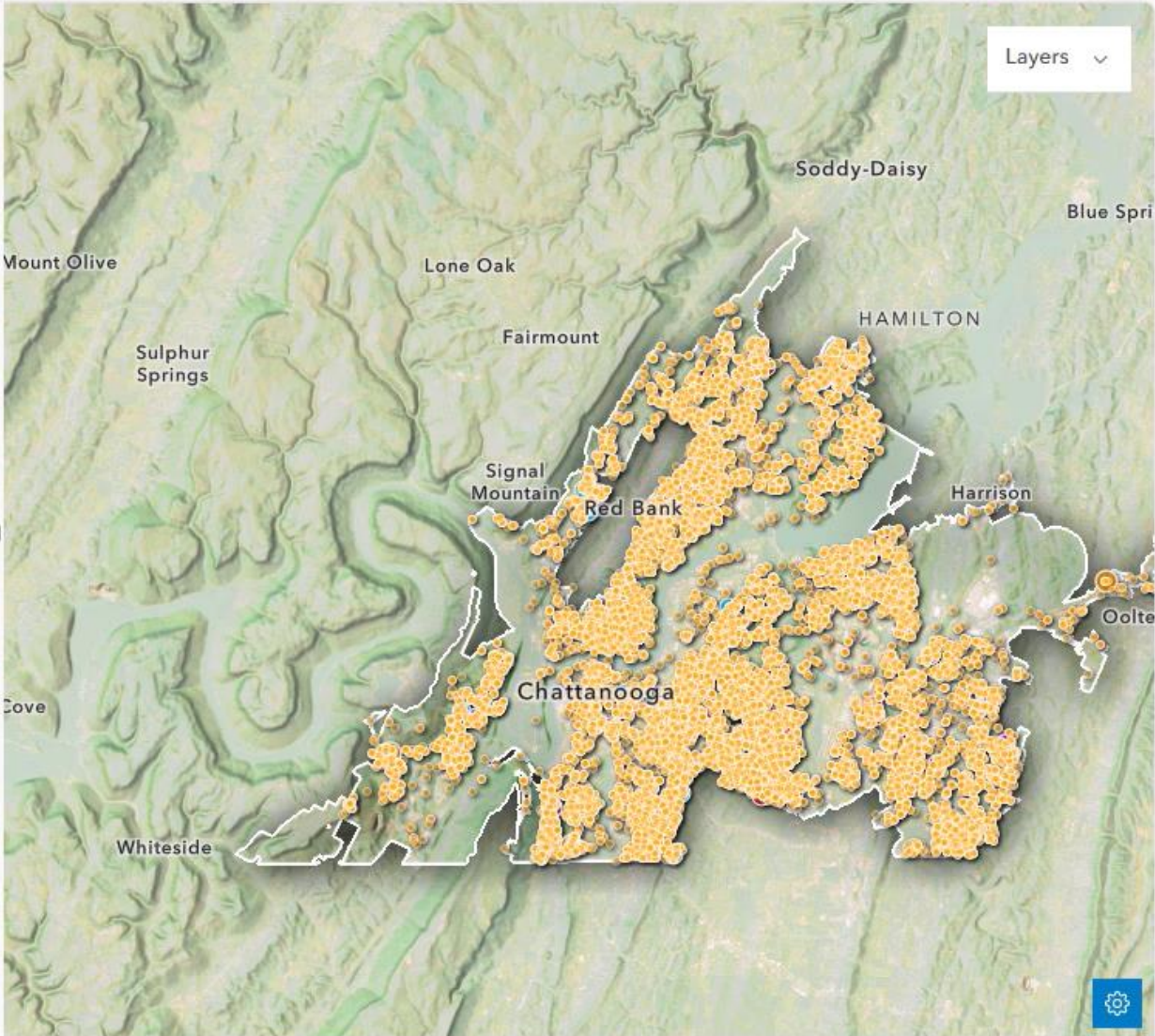
How does the area of the city boundary polygons compare to their length?

Ask a question...

➤

ⓘ AI generated content may be inaccurate. [Terms](#)

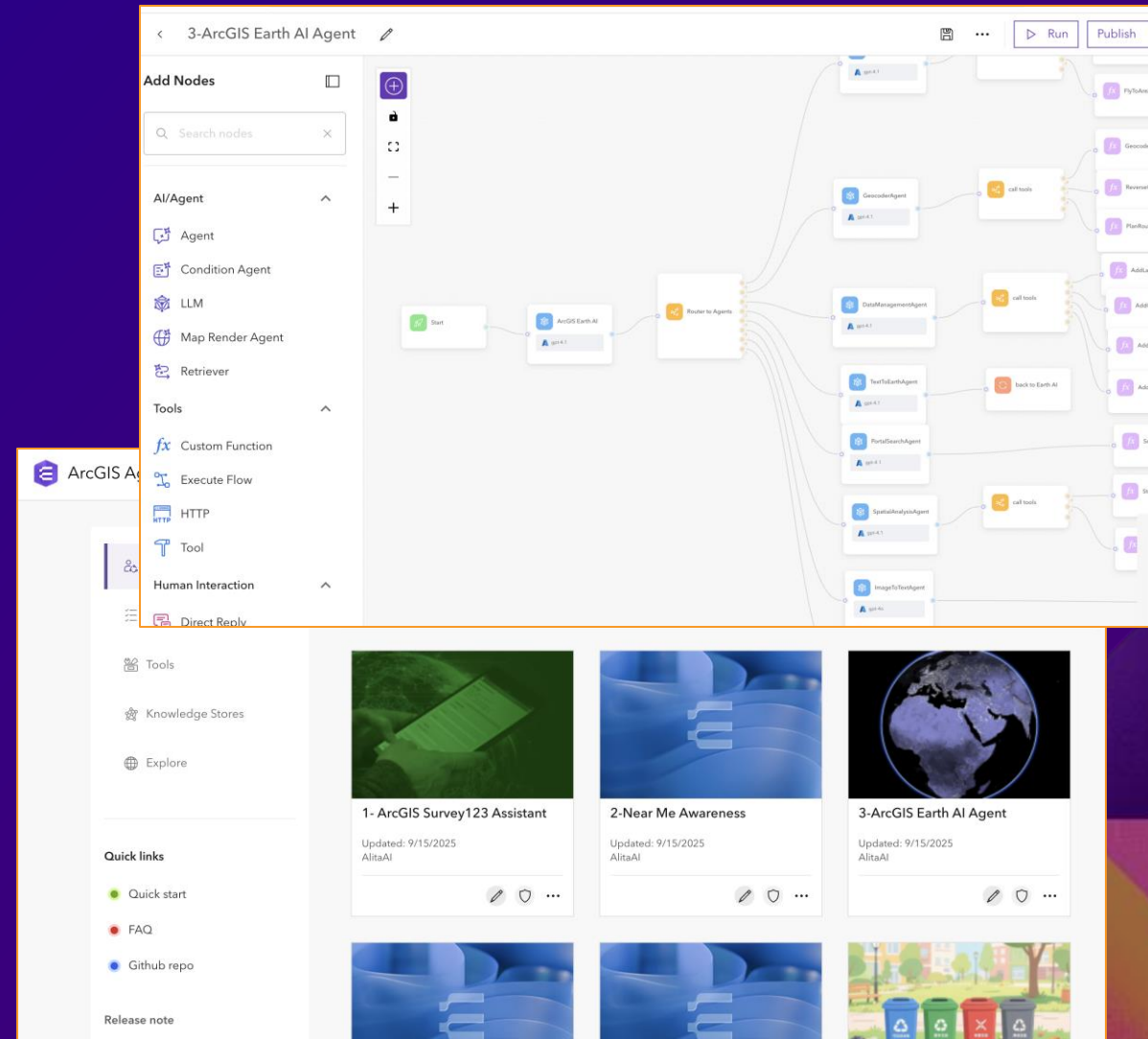
Layers ▾



Earthstar Geographics | Esri, NASA, NGA, USGS | Esri, TomTom, Garmin, SafeGraph, METI/NASA, USGS, EPA, NPS, U... Powered by Esri

# Introducing ArcGIS Agent Builder

- ArcGIS Agent Builder is a no-code environment for building geospatial AI agents.
- It empowers users to create customized orchestration flows designed for AI agents, enhanced with ArcGIS capabilities.
- ArcGIS Agent Builder supports the full lifecycle of AI Agents: Design, configuration, and optimization.
- Then, agents are deployed to the ArcGIS AI Framework.



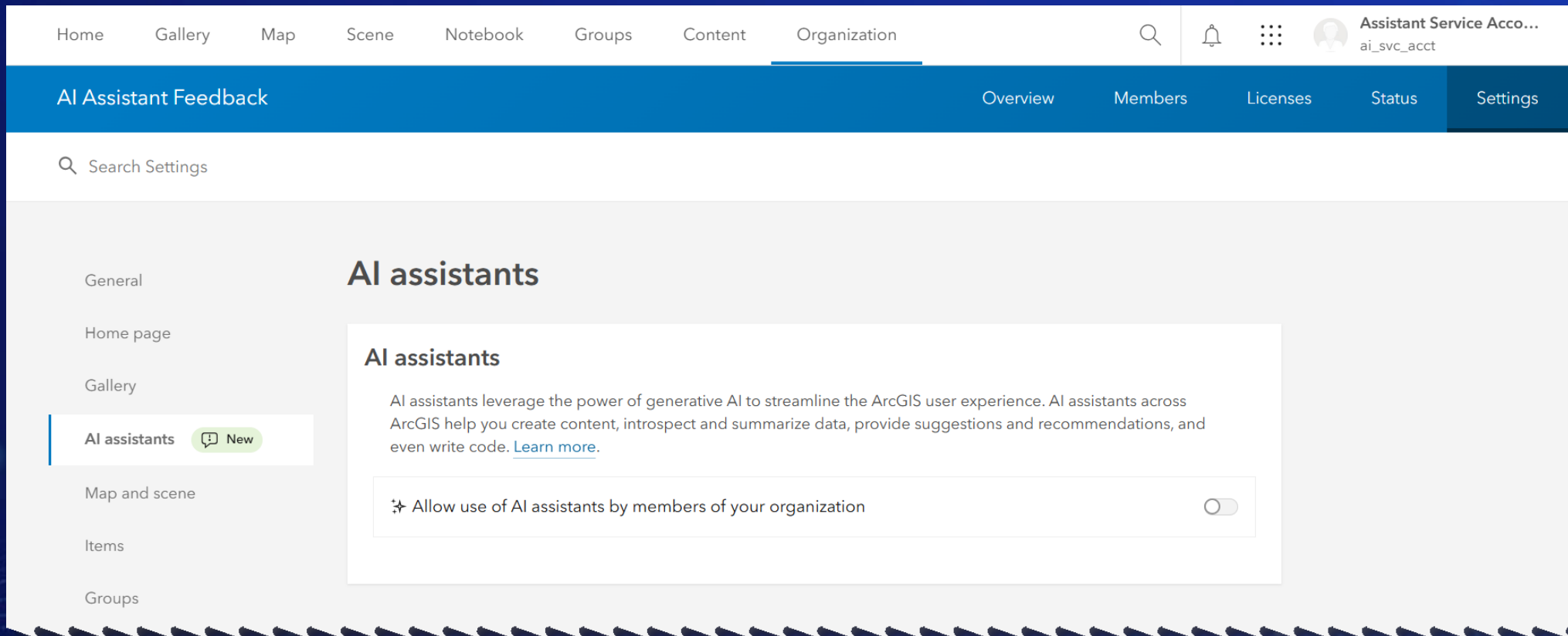


# How to Enable AI assistants in your Organization

Preview

# AI assistant organization setting

Opt-in workflow to enable use of generative AI in ArcGIS

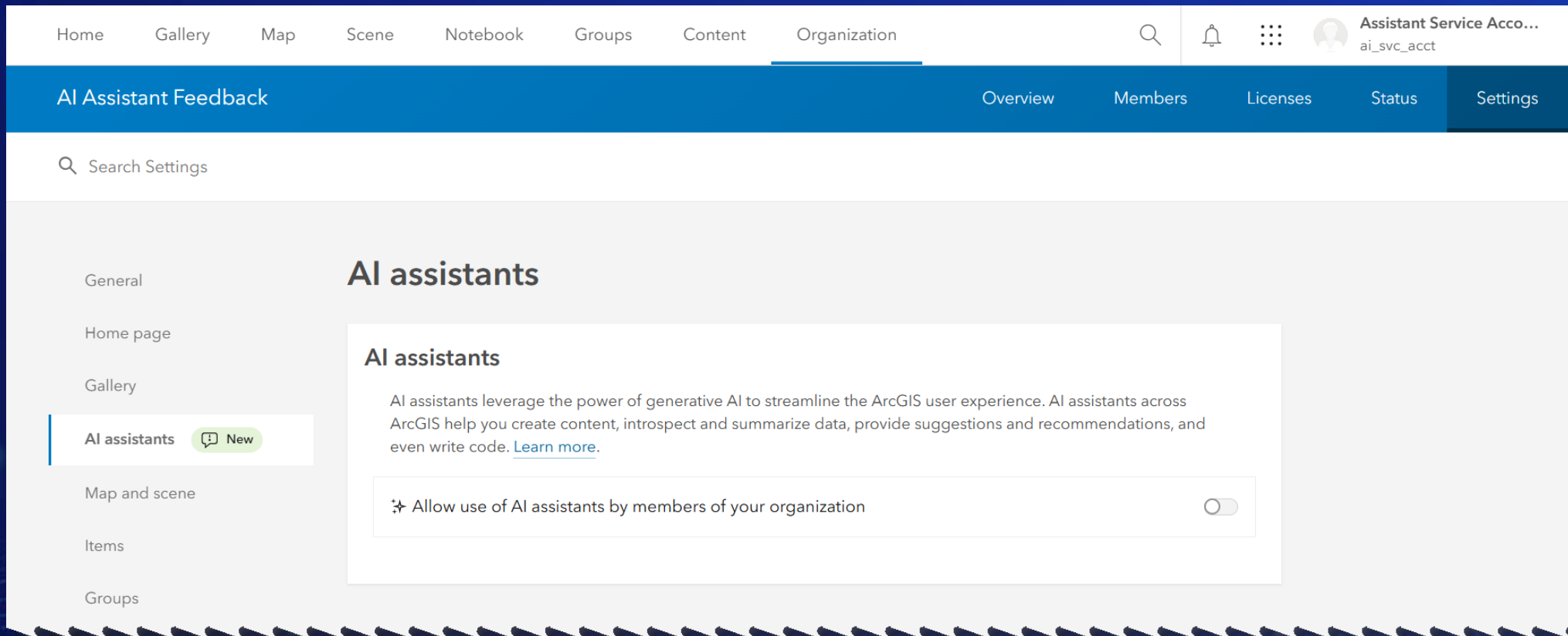


Read [Configure AI assistants help topic](#) for details



# Beta and Preview org settings

Allows administrators to block features in Beta and Preview



Read [Configure AI assistants help topic](#) for details

# ArcGIS Assistants (Enterprise) | Release Plan \*

