

Discovery

Elm Fork Trinity Watershed

“Capturing a More Complete Picture of Your Community and Your Watershed”

FEMA RiskMAP Program

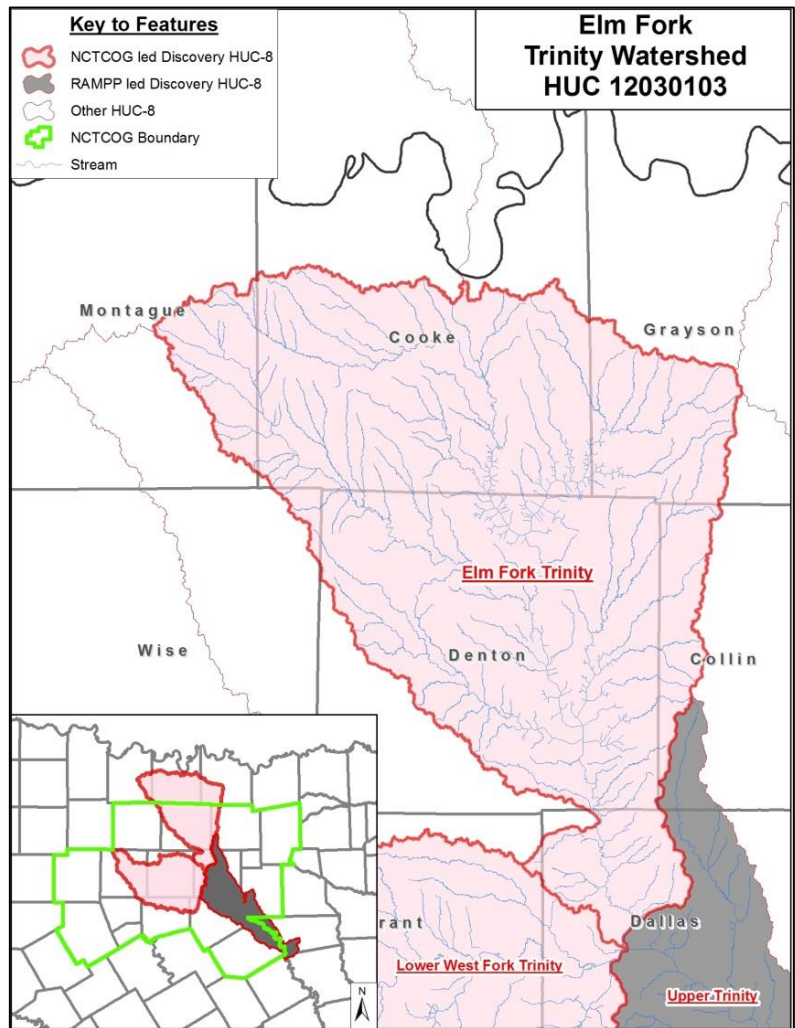
Risk Mapping, Assessment, and Planning (RiskMAP) is the Federal Emergency Management Agency (FEMA) Program that provides communities with flood information and tools they can use to enhance their mitigation plans and take action to better protect their citizens. Through more precise flood mapping products, risk assessment tools, and planning and outreach support, RiskMAP strengthens local ability to make informed decisions about reducing risk. The North Central Texas Council of Governments (NCTCOG) has been awarded a FEMA grant to assist our local governments in these important issues - locate risk, define risks, and to prepare floodplain maps within the Elm Fork Trinity Watershed.

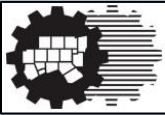
Discovery

Discovery is the first phase of an overall Hazard Mitigation process. During Discovery, we seek input from stakeholders within the basin to obtain information about local flood risk, flood hazards, mitigation plans, mitigation activities, flooding history, development plans, and floodplain management activities to help communities identify areas of risk. The Discovery process is the “discovery” of flood hazards and risk throughout the watershed. The goal of Discovery is to work closely with communities to better understand local flood risk, mitigation efforts, and other topics in order to spark watershed-wide discussions about increasing resilience to flooding. Gathered information is used to determine which areas of the watershed require mapping, risk assessment, or mitigation planning assistance. Our team will collect region-wide datasets and will coordinate with our watershed stakeholders to obtain additional data that can inform discussions regarding flood risk. Discovery meetings will be conducted in the watershed. The key goals of the

Discovery Meetings are to review and validate the gathered flood risk data; discuss the community’s flooding history, development plans, flood mapping needs, and flood risk concerns; and to discuss the vision for the watershed’s future, as well as the importance of mitigation planning and community outreach. These meetings will be “open house” style where communities are able to provide flood risk data at stations and learn more about programs that may help reduce their flood risk.

Attend a Discovery Meeting!
Details on Next Page





The North Central Texas Council of Governments (NCTCOG) is a voluntary association of, by and for local governments, and was established to assist local governments in planning for common needs, cooperating mutual benefit, and coordinating for sound regional development. NCTCOG's purpose is to strengthen both the individual and collective power of local governments and to help them recognize regional opportunities, eliminate unnecessary duplication, and make joint decisions. For more information, please visit www.nctcog.org.

NCTCOG is a FEMA Cooperating Technical Partner (CTP), which allows for them to collaborate with FEMA in order to help maintain current flood hazard information. The results of the 2009 Map Needs Assessment Study conducted by NCTCOG and the Texas Water Development Board (TWDB) were used to develop a Mapping Activity Statement (MAS) as the basis of the FEMA CTP grant. FEMA awarded a CTP grant to NCTCOG in Fiscal Year 2012 (FY12) to perform Discovery. NCTCOG's MAS is included in the RiskMAP program.

Elm Fork Trinity Watershed - Discovery Meeting Details:

Tuesday, May 28, 2013, 9 am – 12 pm: Gainesville Civic Center, 311 S Weaver Street, Gainesville, 76240

- Come-and-Go Open House meeting
- Introductory Presentation (approx. 10 minutes) will be offered at 9, 10 and 11 am – Plan to attend one of the presentations and stay to meet with open house stations.
- Communities will be able to provide flood risk data at Discovery Meeting stations
- Learn more about programs that may help reduce your flood risk
- Click [here](#) to register for this meeting

Tuesday, June 25, 2013, 9 am – 12 pm: Frisco Senior Center, 6670 Moore Street, Frisco, 75034

- Come-and-Go Open House meeting
- Introductory Presentation (approx. 10 minutes) will be offered at 9, 10 and 11 am – Plan to attend one of the presentations and stay to meet with open house stations.
- Communities will be able to provide additional flood risk data at stations
- Learn more about programs that may help reduce your flood risk
- Click [here](#) to register for this meeting

Other meeting dates and locations are also being scheduled. For more information and to RSVP, contact Leo Valencia: LValencia@nctcog.org or 817-608-2363

RiskMAP Process – Discovery

NCTCOG, in partnership with FEMA Region VI, began the Discovery process in the Elm Fork Trinity Watershed to gather local information and readily available data to determine project viability and the need for RiskMAP products to assist in the movement of communities towards resilience. Through the Discovery process, NCTCOG and FEMA can determine which areas of the watershed may be funded for further flood risk identification and assessment in a collaborative manner, taking into consideration the information collected from local communities during this process. We are currently making Pre-Discovery community contacts to gather information. We will host a Pre-Discovery meetings webinar to highlight the Discovery process and illustrate how communities can participate. Following the Discovery meetings, projects will be identified and summarized in a Discovery Report submitted to FEMA and shared with all project stakeholders.

Discovery Data Collection

The box to the right lists some of the types of data requested from each community within the watershed. We would greatly appreciate your participation in providing mapping needs and flood risk data for your community. Please submit data or questions to Leo Valencia at LValencia@nctcog.org or 817-608-2363.

Why is this Important?

Because flood hazards change over time, this effort provides a great opportunity to take a broader look at the components and activities that contribute to your community's and your watershed's flood risk. In addition to providing another perspective, participating in this process will increase your understanding of your flood risk and help you identify proactive steps you can take to protect your community from losses of life and property that often accompany flooding.

Website Information

For more information on the Discovery Process and information on the Elm Fork Trinity Watershed, please visit: <http://www.nctcog.org/envir/SEEsafe/ctp/discovery.asp>

Requested Data from Communities:

- Areas of flooding
- Historical local flooding locations, mitigation activities and grant projects (ongoing or planned)
- High water marks
- Comprehensive plans
- Local development and floodplain management plans
- Stormwater management activities
- Community ordinances
- Infrastructure information, especially for levees and new bridges, dams, culverts and road improvements
- Flood study needs
- Regional watershed plans
- Details of the current flood risk communication process
- Other information you'd like to share