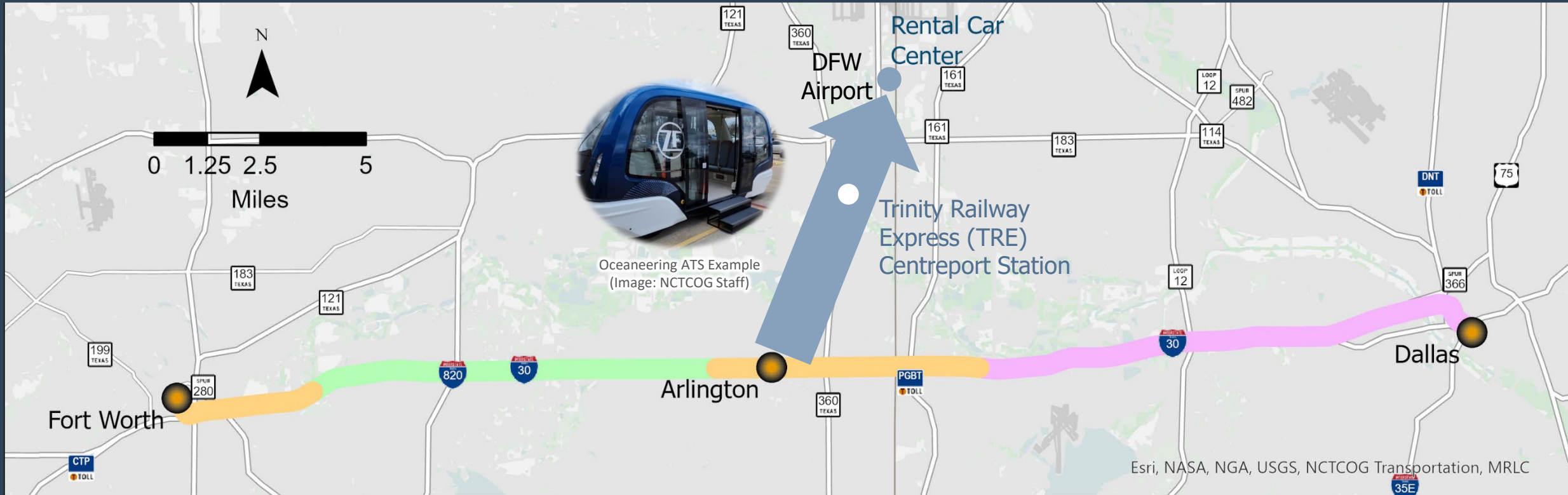
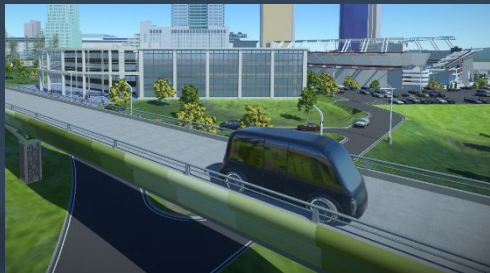


Arlington HSR-Airport ATS¹ Link



¹Automated Transportation System (ATS) recommendation provides dedicated connectivity between proposed HSR Station, TRE Centreport Station, and DFW Airport



- Airport Link Stations
- ➔ Airport Link
- High Speed Rail Stations
- High Speed Rail
- Elevated
- Trench/At-Grade
- Tunnel