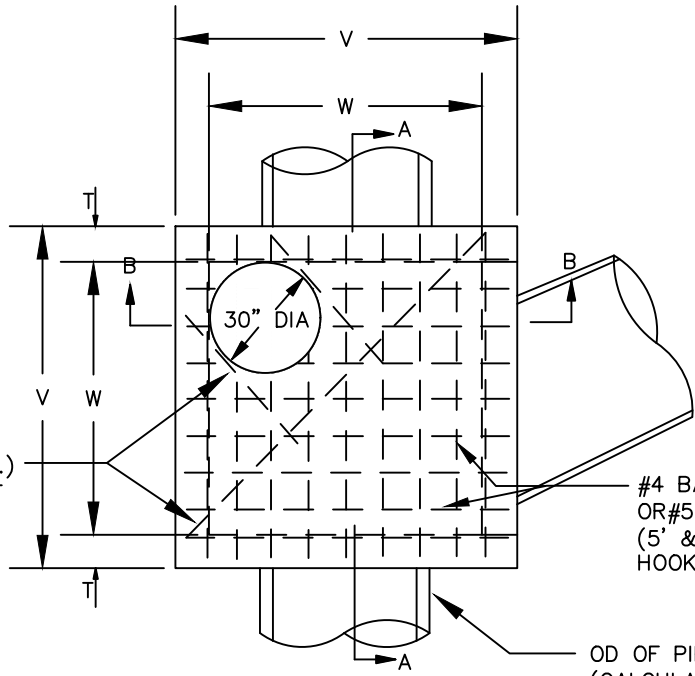


DIVISION 6000 STORMWATER DRAINAGE**TABLE OF CONTENTS**

<u>Drawing #</u>	<u>Subject</u>	<u>Section I: Item #</u>
6010A	Storm Water Manhole 4', 5', or 6' Square	502.1.4.1. Page 502-3
6010B	Storm Water Manhole 4', 5', or 6' Square	502.1.4.1. Page 502-3
6020A	Curb Inlet 5', 10', 15' or 20' Opening	702. Pages 702-1 to 702-29
6020B	Curb Inlet Cross Section & Inlet throat	702. Pages 702-1 to 702-29
6020C	Curb Inlet Rebar	702. Pages 702-1 to 702-29
6020D	Curb Inlet Bill of Reinforcing Steel	702. Pages 702-1 to 702-29
6020E	Curb Inlet Summary of Quantities	702. Pages 702-1 to 702-29
6030A	Curb Inlet Recessed 5', 10', 15', or 20' Opening	702. Pages 702-1 to 702-29
6030B	Curb Inlet Recessed Cross Section & Center Beam	702. Pages 702-1 to 702-29
6030C	Curb Inlet Recessed Inlet Throat	702. Pages 702-1 to 702-29
6030D	Curb Inlet Recessed General Notes	702. Pages 702-1 to 702-29
6030E	Curb Inlet Recessed Rebar	702. Pages 702-1 to 702-29
6030F	Curb Inlet Recessed Bill of Reinforcing Steel	702. Pages 702-1 to 702-29
6030G	Curb Inlet Recessed Summary of Quantities	702. Pages 702-1 to 702-29
6040	Drop Inlet 2', 4', 5', or 6' Square	702. Pages 702-1 to 702-29

6050	Low Flow Channel Lining Concrete Reinforced	803.3 Pages 803-6 to 803-8
6060	Concrete Apron Vertical Headwall	803.3 Pages 803-6 to 803-8
6070	Concrete Apron Sloping Headwall	803.3 Pages 803-6 to 803-8
6080	Storm Drain Pipe Collar for Field Connection	501 Pages 501-1 to 501-23 702 Pages 702-1 to 702-29
6090	Subdrains Pavement Subgrade	301 Pages 301-1 to 301-19

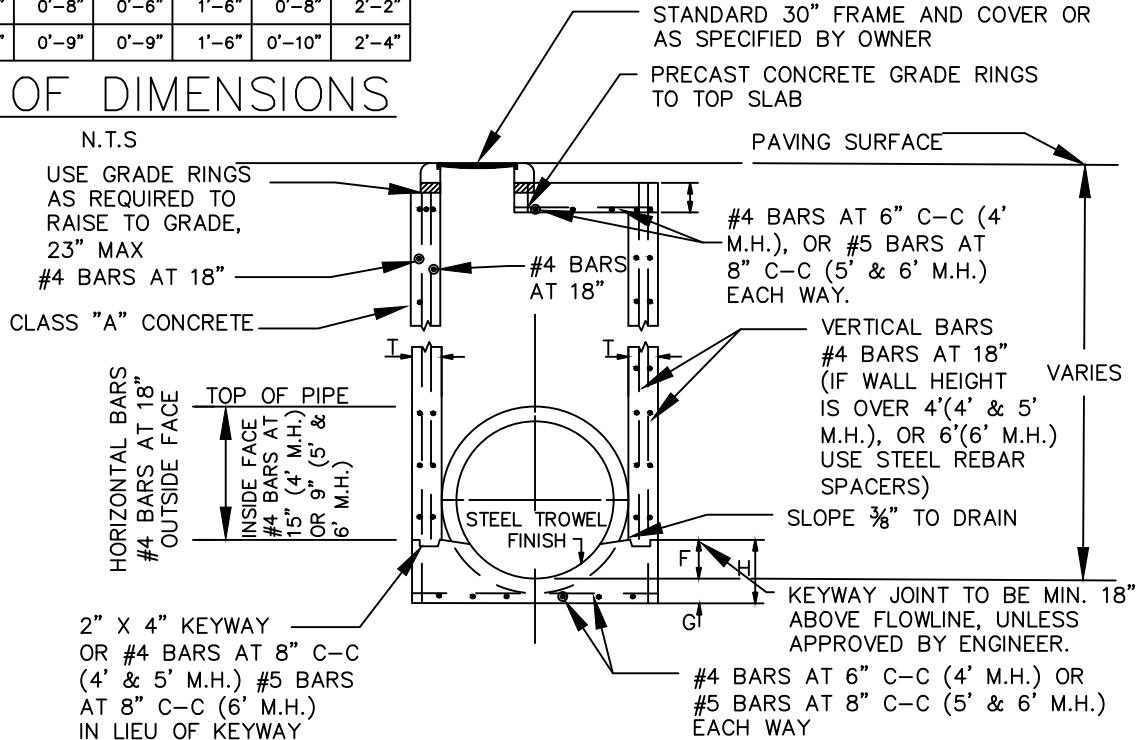
Note: Drawings of other types of inlet structures are not included in this division but may be utilized if they are of a design by an engineer and approved at the discretion of the owner.



PLAN
N.T.S

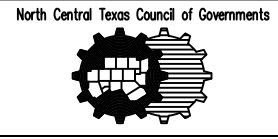
M.H. SIZE (W)	V	T	E	F	G	H
4'-0"	5'-4"	0'-8"	0'-6"	1'-6"	0'-6"	2'-0"
5'-0"	6'-4"	0'-8"	0'-6"	1'-6"	0'-8"	2'-2"
6'-0"	7'-6"	0'-9"	0'-9"	1'-6"	0'-10"	2'-4"

TABLE OF DIMENSIONS

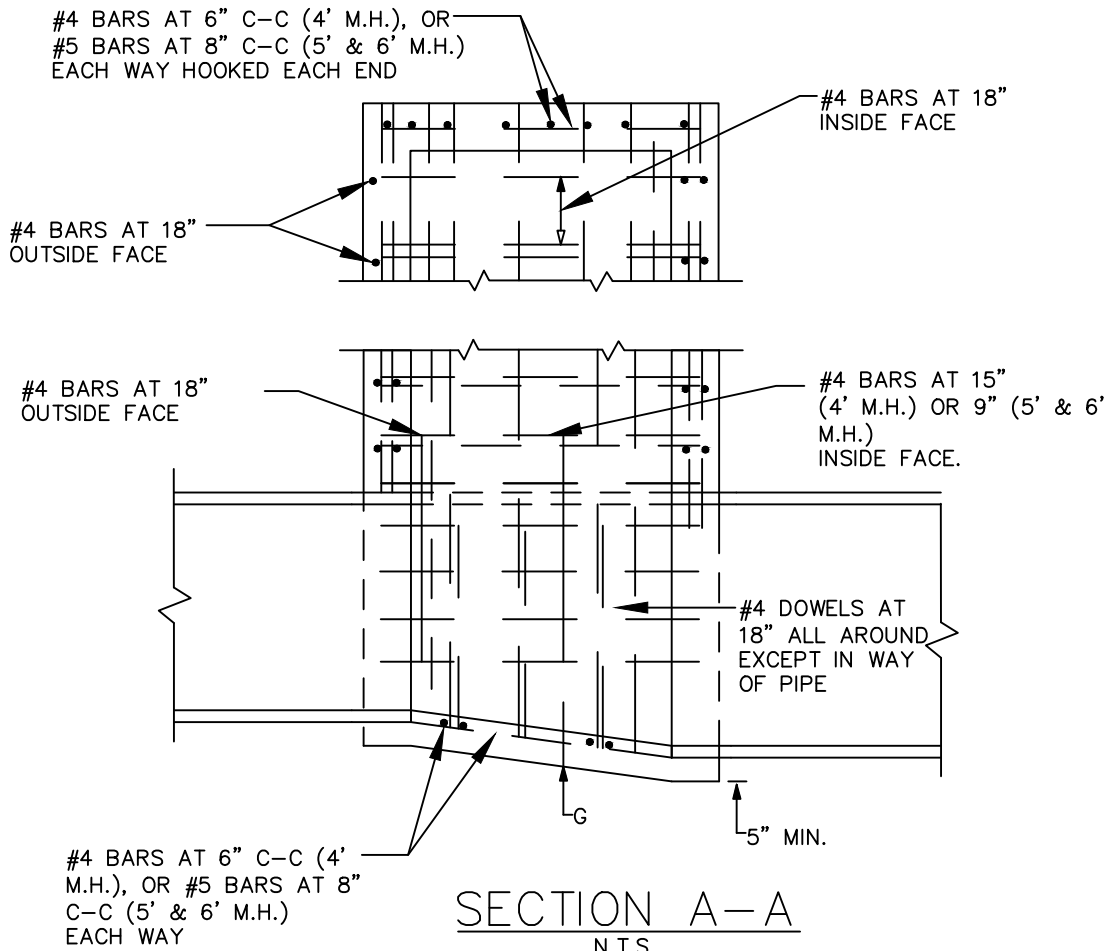


SECTION B-B
N.T.S

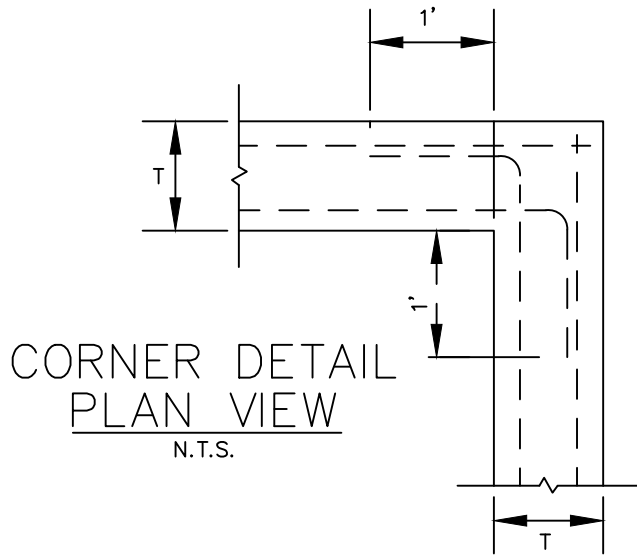
STORM WATER MANHOLE
4', 5', OR 6' SQUARE



STANDARD SPECIFICATION REFERENCE 502.1.4.1*	
DATE JULY '20	STANDARD DRAWING NO. 6010A



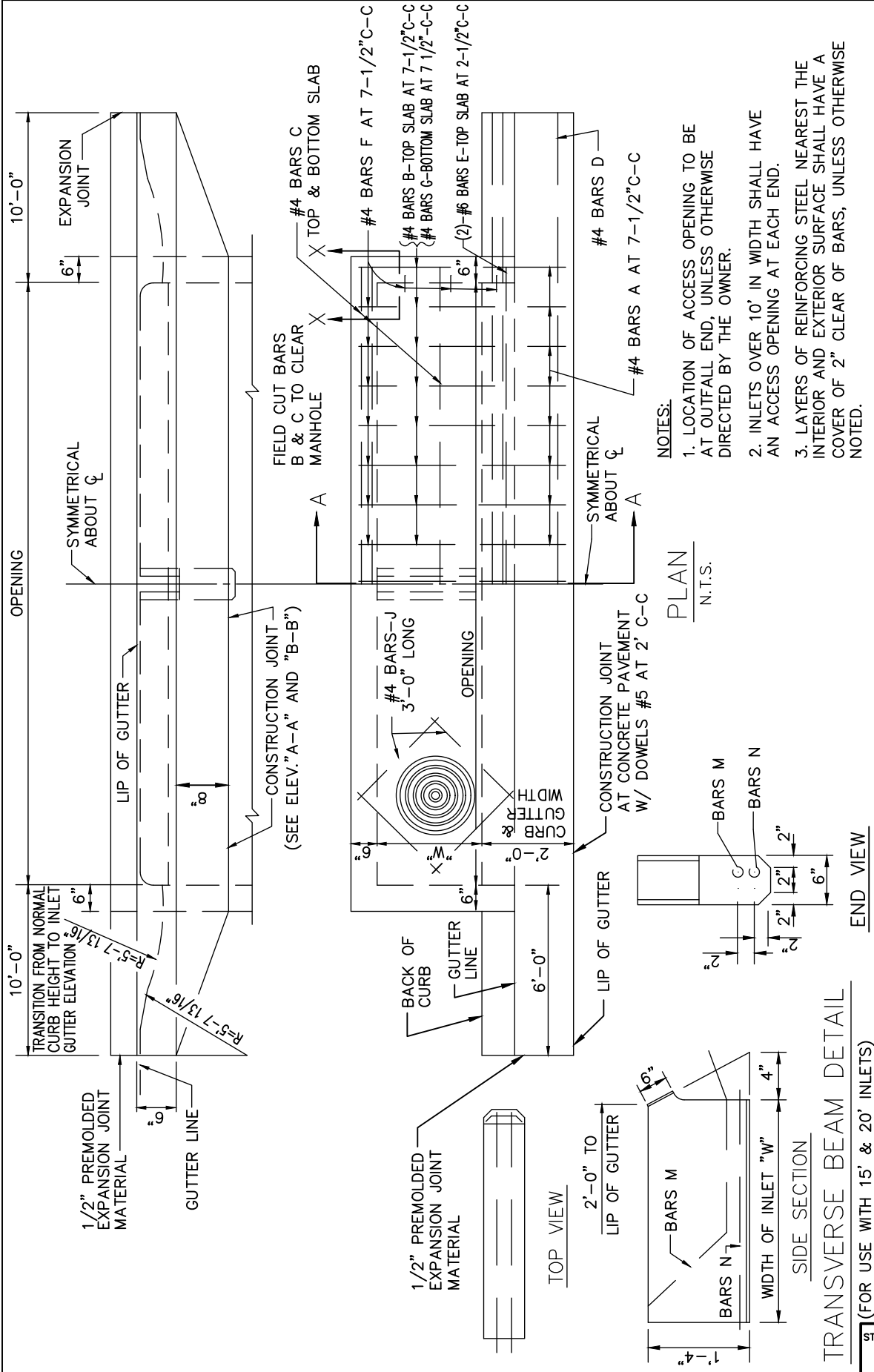
*REFERENCE TABLE 6010A



NOTES:

1. SLOPE INVERT OF MANHOLE AS INDICATED ON PLAN-PROFILE SHEET.
2. LAYERS OF REINFORCING STEEL NEAREST THE INTERIOR AND EXTERIOR SURFACE SHALL HAVE A COVER OF 2" CLEAR OF BARS, UNLESS OTHERWISE NOTED.
3. CONCRETE SHALL BE CLASS "C".
4. PRECAST PRODUCTS MAY BE USED AT THE APPROVAL OF THE OWNER.

<p>STORM WATER MANHOLE 4', 5', OR 6' SQUARE</p>	<p>North Central Texas Council of Governments</p>	<p>STANDARD SPECIFICATION REFERENCE 502.1.4.1*</p>		
		<table style="width: 100%; border-collapse: collapse;"> <tr> <td style="width: 50%; text-align: center;">DATE JULY '20</td> <td style="width: 50%; text-align: center;">STANDARD DRAWING NO. 6010B</td> </tr> </table>	DATE JULY '20	STANDARD DRAWING NO. 6010B
DATE JULY '20	STANDARD DRAWING NO. 6010B			

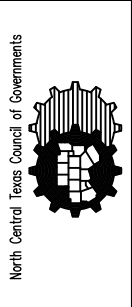


North Central Texas Council of Governments

STANDARD SPECIFICATION REFERENCE
702

DATE
OCT. '04

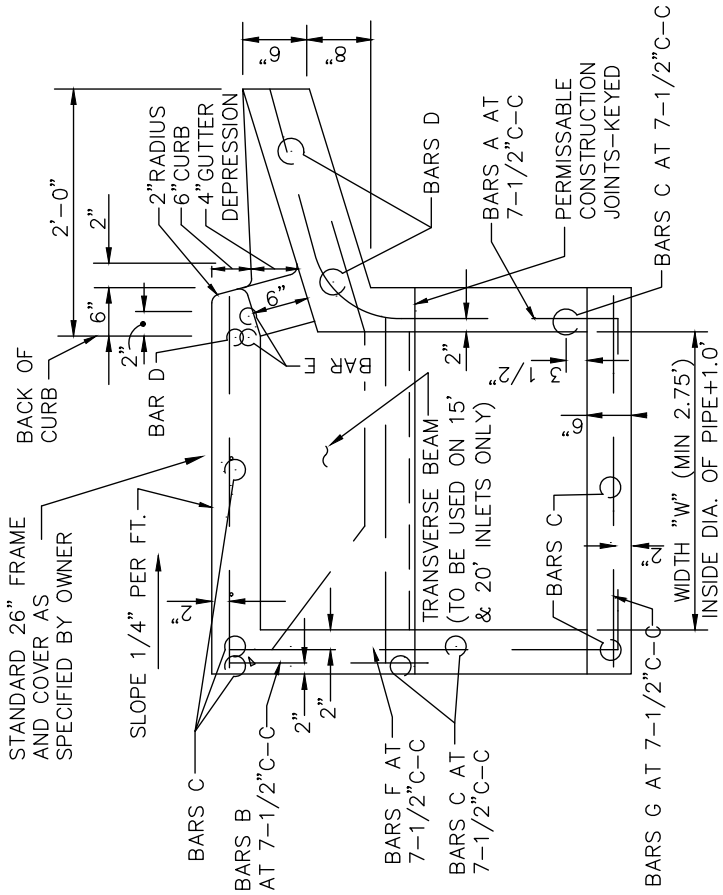
STANDARD DRAWING NO.
6020A



CURB INLET

5', 10', 15' OR 20' OPENING

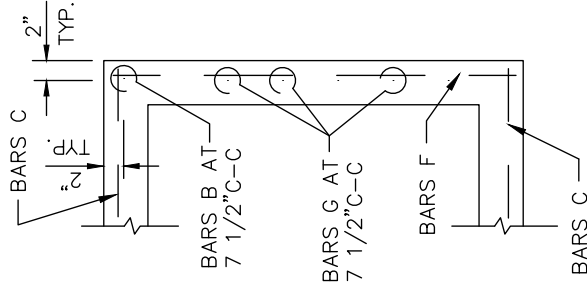
STANDARD DRAWING NO.
6020A



SECTION "A-A"

GENERAL NOTES:
N.T.S.

1. ALL CONCRETE SHALL BE CLASS "C" CONCRETE.
2. REINFORCING BARS SHALL BE STANDARD GRADE STEEL, DEFORMED REINFORCING BARS OF A DIAMETER AND LENGTH AS SHOWN.
3. CHAMFER ALL EXPOSED CORNERS 3/4" EXCEPT WHERE OTHERWISE NOTED.
4. DIMENSIONS RELATING TO REINFORCING STEEL ARE TO OUTSIDE EDGE OF BARS.
5. FIELD CUT AND BEND BARS AS NECESSARY TO ACCOMMODATE STORM SEWER PIPE.
6. RING AND COVER SHALL BE APPROVED BY THE OWNER AND INSTALLED BY THE CONTRACTOR.
7. INLET OPENING SHALL BE 6" MIN. OR 8" MAX.
8. PRECAST PRODUCT MAY BE USED AT THE APPROVAL OF THE OWNER.



SECTION "X-X"

N.T.S.

9. ALLOW 1" MIN. CLEAR SPACE BETWEEN OD OF PIPE OR BOX AND INSIDE WALL OF INLET (OD OF PIPE OR BOX SHOULD ACCOUNT FOR SKEWED CONDITIONS).
10. DEPTHS GREATER THAN 10' NEED TO BE STRUCTURALLY ENGINEERED.
11. KEYWAY JOINT TO BE MIN. 18" ABOVE FLOWLINE, UNLESS APPROVED BY ENGINEER.

STANDARD DRAWING NO.
6020B

North Central Texas Council of Governments

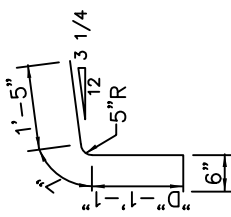


STANDARD SPECIFICATION REFERENCE
702

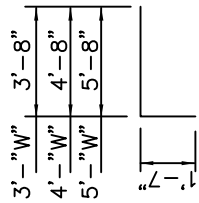
DATE
SEP. '21

STANDARD DRAWING NO.
6020B

CURB INLET
CROSS SECTION & INLET THROAT



#4 BARS A
N.T.S.



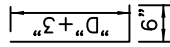
#4 BARS B
N.T.S.



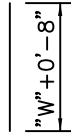
#4 BARS C & D
N.T.S.



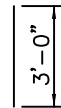
#4 BARS E
N.T.S.



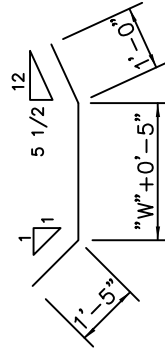
#4 BARS F
N.T.S.



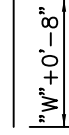
#4 BARS G
N.T.S.



#4 BARS J
N.T.S.



#3 BARS M
N.T.S.



#5 BARS N
N.T.S.

CURB INLET
REBAR



BILL OF REINFORCING STEEL

DEPTH "D"	ALL WIDTHS AND LENGTHS		"L" = 5ft						"L" = 10ft						"L" = 15 ft						"L" = 20 ft																		
			OPENING LENGTH		"W"		OPENING LENGTH		"W"		OPENING LENGTH		"W"		OPENING LENGTH		"W"		OPENING LENGTH		"W"																		
			3ft	4ft	5ft	3ft	4ft	5ft	3ft	4ft	5ft	3ft	4ft	5ft	3ft	4ft	5ft	3ft	4ft	5ft	3ft	4ft	5ft																
BARS	BARS	BARS	BARS	BARS	BARS	BARS	BARS	BARS	BARS	BARS	BARS	BARS	BARS	BARS	BARS	BARS	BARS	BARS	BARS	BARS	BARS	BARS	BARS																
C	D	E	J	F	F	A	B	G	F	F	F	A	B	G	F	F	F	A	B	G	N	F	F	F	A	B	G	M	N										
17	3	2	4	20	24	28	10	20	28	32	36	18	18	28	36	40	44	26	26	36	2	2	44	48	52	34	44	2	2										
3'-6"																																							
3'-9"	18	"	"	"	"	"	"	20	"	"	"	"	"	28	"	"	"	"	"	"	"	"	"	"	"	"	"	"	"	"									
4'-0"	19	"	"	"	"	"	"	24	"	"	"	"	"	32	"	"	"	"	"	"	"	"	"	"	"	"	"	"	"	"	"								
4'-3"	19	"	"	"	"	"	"	24	"	"	"	"	"	32	"	"	"	"	"	"	"	"	"	"	"	"	"	"	"	"	"	"							
4'-6"	21	"	"	"	"	"	"	26	"	"	"	"	"	34	"	"	"	"	"	"	"	"	"	"	"	"	"	"	"	"	"	"							
4'-9"	21	"	"	"	"	"	"	26	"	"	"	"	"	34	"	"	"	"	"	"	"	"	"	"	"	"	"	"	"	"	"	"	"						
5'-0"	21	"	"	"	"	"	"	26	"	"	"	"	"	34	"	"	"	"	"	"	"	"	"	"	"	"	"	"	"	"	"	"	"	"					
5'-3"	23	"	"	"	"	"	"	28	"	"	"	"	"	36	"	"	"	"	"	"	"	"	"	"	"	"	"	"	"	"	"	"	"	"					
5'-6"	23	"	"	"	"	"	"	28	"	"	"	"	"	36	"	"	"	"	"	"	"	"	"	"	"	"	"	"	"	"	"	"	"	"	"				
5'-9"	25	"	"	"	"	"	"	30	"	"	"	"	"	38	"	"	"	"	"	"	"	"	"	"	"	"	"	"	"	"	"	"	"	"	"				
6'-0"	25	"	"	"	"	"	"	30	"	"	"	"	"	38	"	"	"	"	"	"	"	"	"	"	"	"	"	"	"	"	"	"	"	"	"	"			
6'-3"	26	"	"	"	"	"	"	30	"	"	"	"	"	38	"	"	"	"	"	"	"	"	"	"	"	"	"	"	"	"	"	"	"	"	"	"	"		
6'-6"	27	"	"	"	"	"	"	32	"	"	"	"	"	40	"	"	"	"	"	"	"	"	"	"	"	"	"	"	"	"	"	"	"	"	"	"	"		
6'-9"	27	"	"	"	"	"	"	32	"	"	"	"	"	40	"	"	"	"	"	"	"	"	"	"	"	"	"	"	"	"	"	"	"	"	"	"	"	"	
7'-0"	29	"	"	"	"	"	"	34	"	"	"	"	"	42	"	"	"	"	"	"	"	"	"	"	"	"	"	"	"	"	"	"	"	"	"	"	"	"	
7'-3"	29	"	"	"	"	"	"	34	"	"	"	"	"	42	"	"	"	"	"	"	"	"	"	"	"	"	"	"	"	"	"	"	"	"	"	"	"	"	
7'-6"	30	"	"	"	"	"	"	34	"	"	"	"	"	42	"	"	"	"	"	"	"	"	"	"	"	"	"	"	"	"	"	"	"	"	"	"	"	"	
7'-9"	31	"	"	"	"	"	"	36	"	"	"	"	"	44	"	"	"	"	"	"	"	"	"	"	"	"	"	"	"	"	"	"	"	"	"	"	"	"	
8'-0"	31	"	"	"	"	"	"	36	"	"	"	"	"	44	"	"	"	"	"	"	"	"	"	"	"	"	"	"	"	"	"	"	"	"	"	"	"	"	"
8'-3"	32	"	"	"	"	"	"	36	"	"	"	"	"	44	"	"	"	"	"	"	"	"	"	"	"	"	"	"	"	"	"	"	"	"	"	"	"	"	"
8'-6"	33	"	"	"	"	"	"	38	"	"	"	"	"	46	"	"	"	"	"	"	"	"	"	"	"	"	"	"	"	"	"	"	"	"	"	"	"	"	"
8'-9"	34	"	"	"	"	"	"	38	"	"	"	"	"	46	"	"	"	"	"	"	"	"	"	"	"	"	"	"	"	"	"	"	"	"	"	"	"	"	"
9'-0"	35	"	"	"	"	"	"	40	"	"	"	"	"	48	"	"	"	"	"	"	"	"	"	"	"	"	"	"	"	"	"	"	"	"	"	"	"	"	"
9'-3"	36	"	"	"	"	"	"	40	"	"	"	"	"	48	"	"	"	"	"	"	"	"	"	"	"	"	"	"	"	"	"	"	"	"	"	"	"	"	"
9'-6"	37	"	"	"	"	"	"	42	"	"	"	"	"	50	"	"	"	"	"	"	"	"	"	"	"	"	"	"	"	"	"	"	"	"	"	"	"	"	
10'-0"	38	"	"	"	"	"	"	42	"	"	"	"	"	50	"	"	"	"	"	"	"	"	"	"	"	"	"	"	"	"	"	"	"	"	"	"	"	"	

NOTES:
 - FOR CONVENIENCE, DEPTHS OF INLETS SHOWN IN ABOVE TABLES ARE IN INCREMENTS OF 3 INCHES BUT ANY DEPTHS OTHER THAN THOSE SHOWN ABOVE MAY BE USED WHEREVER DEEMED NECESSARY. QUANTITIES FOR OTHER DEPTHS FALLING WITHIN THE LIMITS OF THE TABLE MAY BE FOUND BY INTERPOLATION.
 - DEPTHS GREATER THAN 10' NEED TO BE STRUCTURALLY ENGINEERED.

STANDARD SPECIFICATION REFERENCE
 702
 DATE
 OCT. '04
 STANDARD DRAWING NO.
 6020D



CURB INLET
 BILL OF REINFORCING STEEL

STANDARD DRAWING NO.
 6020D

SUMMARY OF QUANTITIES FOR CURB INLETS

DEPTH "D"	5'-0" OPENING						10'-0" OPENING						15'-0" OPENING						20'-0" OPENING					
	WIDTH 3'-0"		WIDTH 4'-0"		WIDTH 5'-0"		WIDTH 3'-0"		WIDTH 4'-0"		WIDTH 5'-0"		WIDTH 3'-0"		WIDTH 4'-0"		WIDTH 5'-0"		WIDTH 3'-0"		WIDTH 4'-0"		WIDTH 5'-0"	
	CONC C.Y.	STEEL LBS.	CONC C.Y.	STEEL LBS.	CONC C.Y.	STEEL LBS.	CONC C.Y.	STEEL LBS.	CONC C.Y.	STEEL LBS.	CONC C.Y.	STEEL LBS.	CONC C.Y.	STEEL LBS.	CONC C.Y.	STEEL LBS.	CONC C.Y.	STEEL LBS.	CONC C.Y.	STEEL LBS.	CONC C.Y.	STEEL LBS.	CONC C.Y.	STEEL LBS.
3'-6"	2.62	306	2.95	332	3.28	373	4.12	479	4.64	521	5.20	564	5.69	667	6.40	721	7.10	775	7.20	846	8.11	909	9.03	976
3'-9"	2.70	309	3.04	341	3.39	373	4.25	494	4.78	536	5.34	579	5.87	687	6.58	741	7.30	796	7.42	874	8.34	937	9.27	1010
4'-0"	2.78	328	3.14	364	3.49	399	4.38	518	4.92	565	5.49	610	6.05	718	6.77	776	7.49	835	7.64	909	8.58	976	9.51	1046
4'-3"	2.87	334	3.23	370	3.59	406	4.51	526	5.06	573	5.64	619	6.22	729	6.95	787	7.69	847	7.87	922	8.81	990	9.75	1061
4'-6"	2.95	356	3.32	394	3.69	431	4.64	558	5.20	607	5.79	656	6.40	770	7.14	830	7.88	891	8.09	973	9.04	1043	9.99	1115
4'-9"	3.03	361	3.41	410	3.79	438	4.77	566	5.34	616	5.94	665	6.57	780	7.32	841	8.07	893	8.31	986	9.27	1056	10.23	1129
5'-0"	3.12	367	3.51	416	3.90	445	4.90	574	5.47	624	6.09	674	6.75	791	7.51	853	8.27	915	8.53	999	9.50	1070	10.47	1144
5'-3"	3.20	383	3.60	424	4.00	465	5.03	600	5.61	652	6.23	704	6.93	827	7.69	890	8.46	955	8.76	1044	9.73	1118	10.71	1194
5'-6"	3.28	389	3.69	430	4.10	472	5.16	608	5.75	661	6.38	713	7.11	837	7.88	901	8.66	967	8.98	1057	9.97	1131	10.95	1208
5'-9"	3.37	405	3.78	451	4.20	495	5.29	635	5.89	690	6.53	744	7.28	874	8.07	940	8.85	1007	9.20	1102	10.20	1178	11.19	1258
6'-0"	3.45	415	3.88	460	4.30	504	5.42	646	6.03	702	6.68	757	7.45	888	8.25	954	9.05	1022	9.42	1119	10.43	1196	11.43	1276
6'-3"	3.53	425	3.97	470	4.41	515	5.55	661	6.17	718	6.83	773	7.63	908	8.44	975	9.24	1044	9.64	1147	10.66	1223	11.67	1305
6'-6"	3.62	437	4.06	486	4.51	532	5.68	681	6.31	739	6.97	797	7.81	935	8.62	1005	9.43	1057	9.87	1178	10.89	1258	11.92	1340
6'-9"	3.70	441	4.15	490	4.61	537	5.81	688	6.45	747	7.12	806	7.98	945	8.81	1015	9.63	1066	10.09	1191	11.12	1272	12.15	1355
7'-0"	3.78	460	4.25	510	4.71	560	5.94	716	6.59	777	7.27	837	8.16	981	8.99	1053	9.82	1126	10.31	1237	11.35	1319	12.40	1404
7'-3"	3.86	465	4.34	516	4.81	567	6.07	724	6.72	785	7.42	846	8.33	992	9.18	1065	10.02	1138	10.53	1249	11.59	1333	12.64	1418
7'-6"	3.95	477	4.43	529	4.91	570	6.20	742	6.86	804	7.57	866	8.51	1016	9.36	1089	10.21	1163	10.75	1290	11.82	1365	12.88	1451
7'-9"	4.03	491	4.53	544	5.02	597	6.33	762	7.00	826	7.71	890	8.67	1040	9.55	1116	10.41	1193	10.98	1313	12.05	1399	13.12	1498
8'-0"	4.12	496	4.62	550	5.12	604	6.46	770	7.14	834	7.86	899	8.86	1051	9.73	1129	10.60	1205	11.20	1325	12.28	1412	13.36	1510
8'-3"	4.20	504	4.71	559	5.22	613	6.59	784	7.28	849	8.01	915	9.04	1069	9.92	1149	10.80	1228	11.42	1353	12.51	1440	13.60	1529
8'-6"	4.28	519	4.80	576	5.32	632	6.71	804	7.42	871	8.16	938	9.21	1107	10.10	1176	10.99	1257	11.64	1385	12.74	1474	13.84	1565
8'-9"	4.37	528	4.90	586	5.42	643	6.84	819	7.56	886	8.31	954	9.39	1119	10.29	1199	11.18	1280	11.87	1410	12.97	1500	14.08	1592
9'-0"	4.45	545	4.99	605	5.53	664	6.97	842	7.70	912	8.46	982	9.56	1148	10.47	1231	11.38	1313	12.09	1447	13.21	1539	14.32	1631
9'-3"	4.53	554	5.08	614	5.63	674	7.10	858	7.84	929	8.60	999	9.74	1169	10.66	1252	11.57	1335	12.31	1474	13.44	1563	14.56	1660
9'-6"	4.62	568	5.17	630	5.73	692	7.23	878	7.97	950	8.75	1022	9.92	1195	10.84	1280	11.77	1365	12.53	1505	13.67	1600	14.80	1696
10'-0"	4.78	582	5.36	645	5.93	708	7.49	900	8.11	974	9.05	1048	10.27	1227	11.21	1312	12.16	1399	12.98	1546	14.13	1642	15.29	1739

NOTE:

- FOR CONVENIENCE, DEPTHS OF INLETS SHOWN IN ABOVE TABLES ARE IN INCREMENTS OF 3 INCHES BUT ANY DEPTHS OTHER THAN THOSE SHOWN ABOVE MAY BE USED WHEREVER DEEMED NECESSARY. QUANTITIES FOR OTHER DEPTHS FALLING WITHIN THE LIMITS OF THE TABLE MAY BE FOUND BY INTERPOLATION.
- DEPTHS GREATER THAN 10' NEED TO BE STRUCTURALLY ENGINEERED.

STANDARD DRAWING NO.
6020E

CURB INLET

SUMMARY OF QUANTITIES

North Central Texas Council of Governments



STANDARD SPECIFICATION REFERENCE

702

DATE

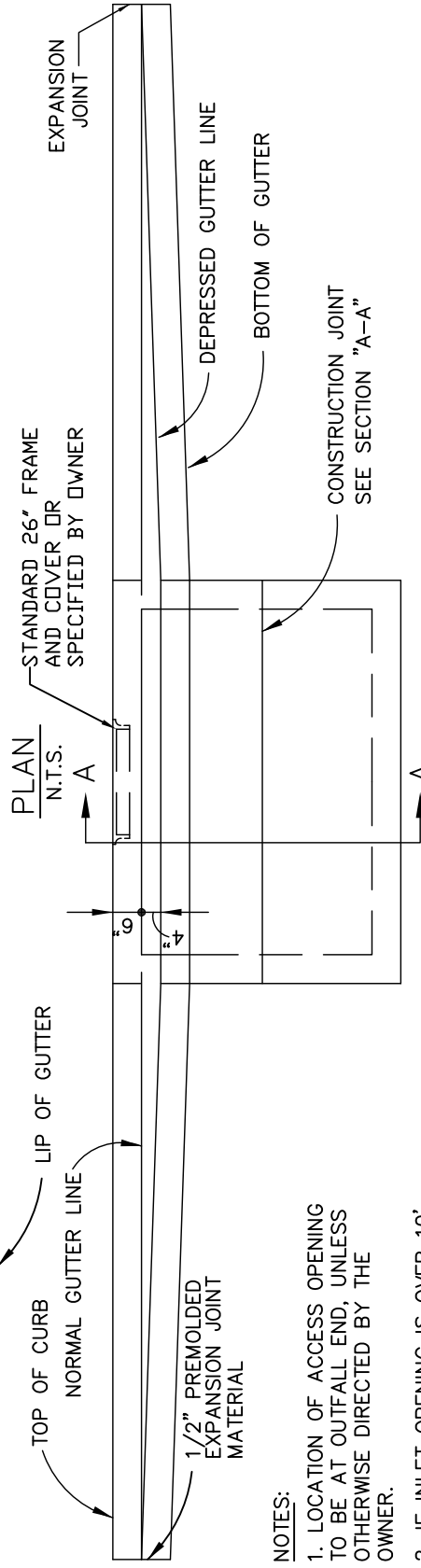
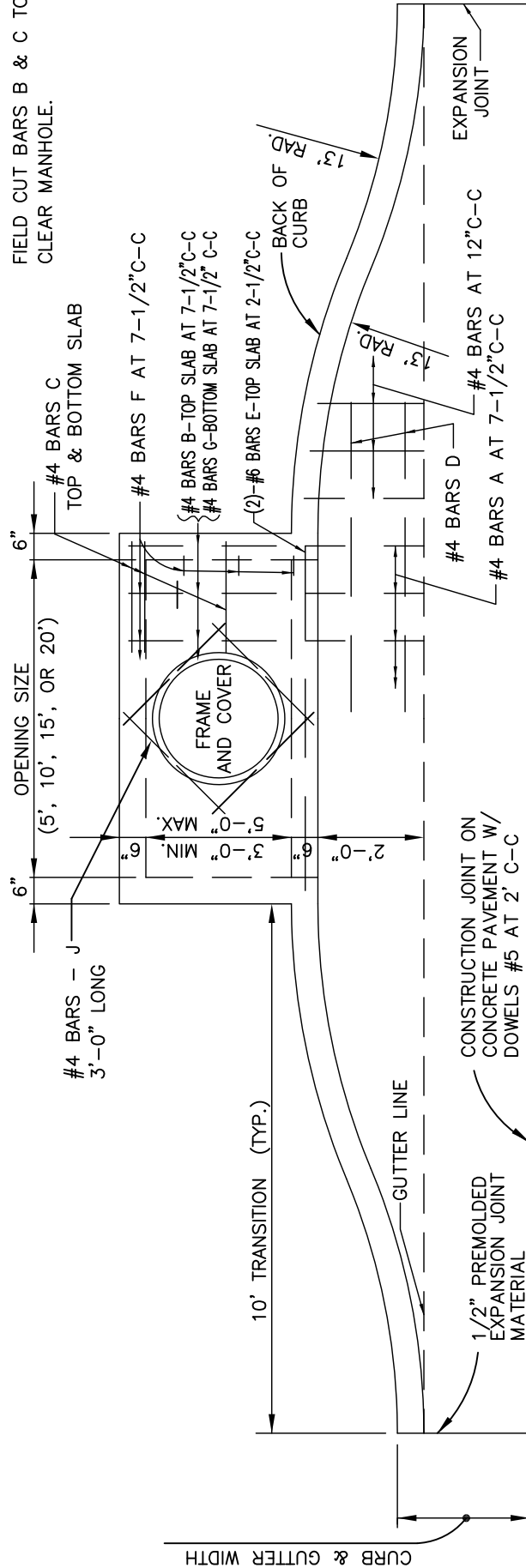
OCT. '04

STANDARD DRAWING NO.

6020E

NOTE:

FIELD CUT BARS B & C TO CLEAR MANHOLE.



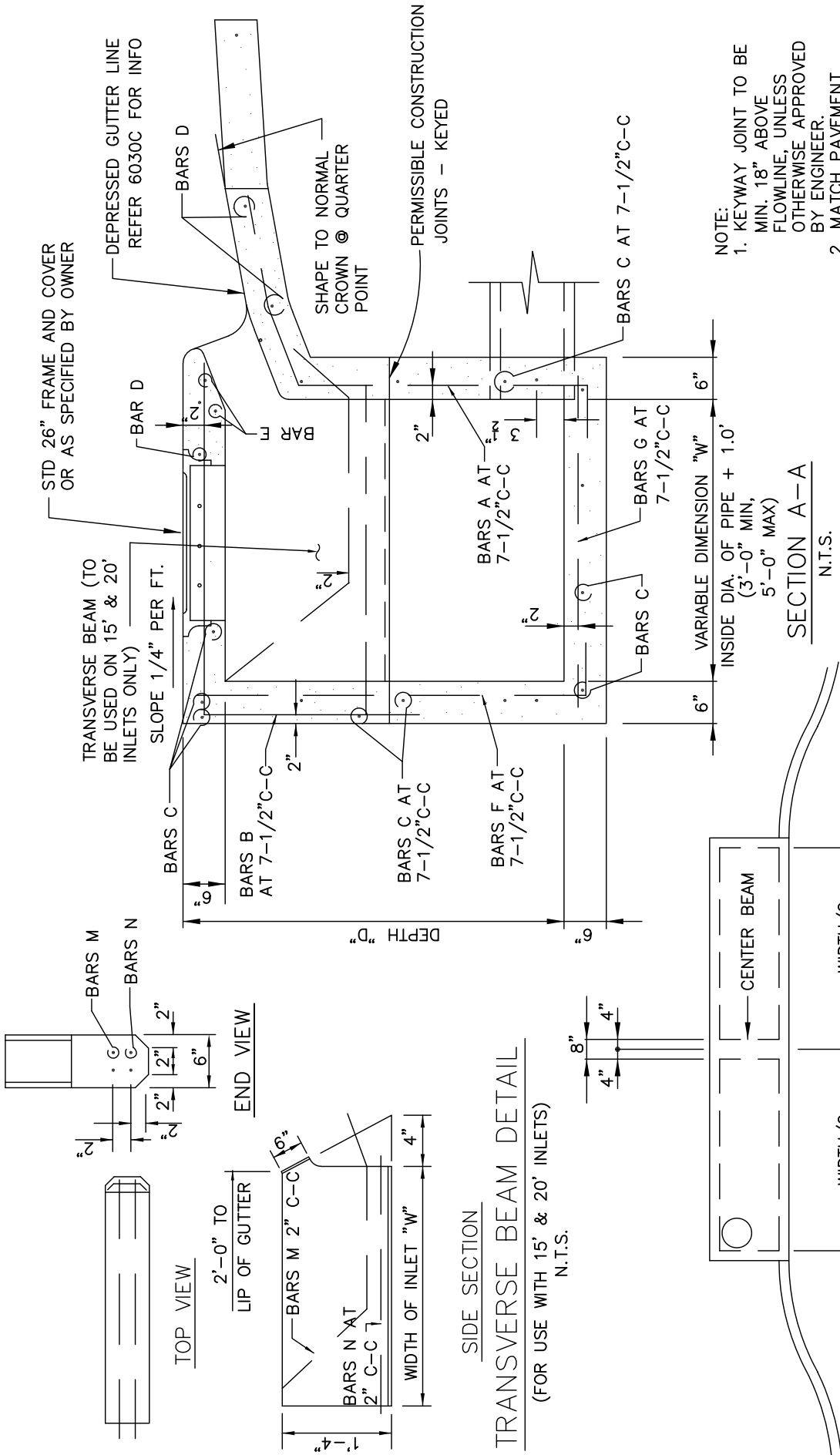
NOTES:

1. LOCATION OF ACCESS OPENING TO BE AT OUTFALL END, UNLESS OTHERWISE DIRECTED BY THE OWNER.
2. IF INLET OPENING IS OVER 10' WIDTH, THEN THERE SHALL BE A MANHOLE OPENING AT EACH END OF INLET.

STANDARD SPECIFICATION REFERENCE	702
DATE	JULY '20
STANDARD DRAWING NO.	6030A



CURB INLET RECESSED
5', 10', 15' OR 20' OPENING



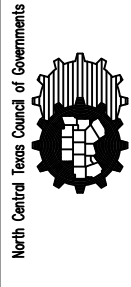
NOTE:
 1. KEYWAY JOINT TO BE MIN. 18" ABOVE FLOWLINE, UNLESS OTHERWISE APPROVED BY ENGINEER.
 2. MATCH PAVEMENT THICKNESS TO STREET, TYPICALLY 6".

SECTION A-A
 N.T.S.

TRANSVERSE BEAM DETAIL
 (FOR USE WITH 15' & 20' INLETS)
 N.T.S.

TRANSVERSE BEAM FOR 15' AND 20' INLETS
 N.T.S.

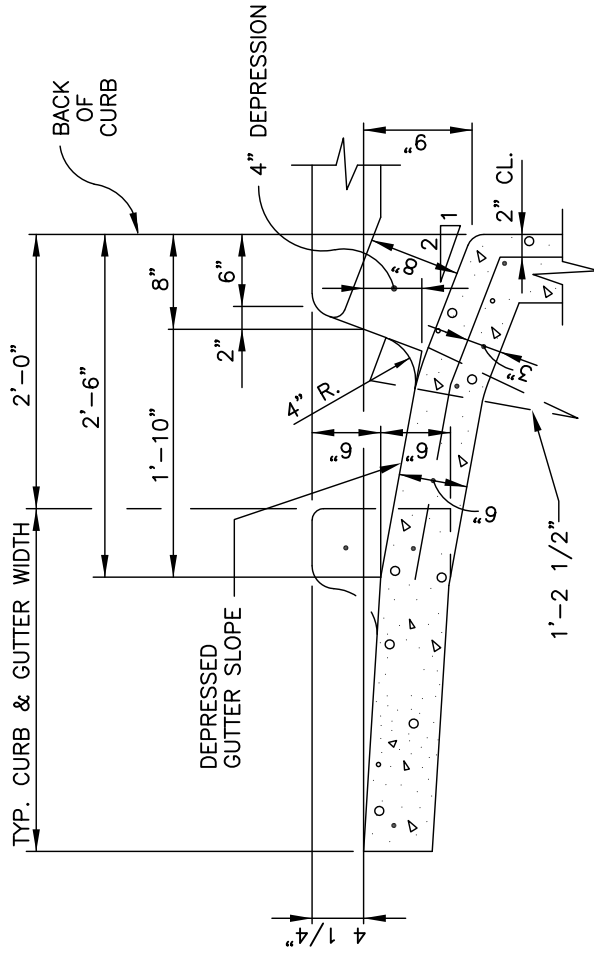
STANDARD SPECIFICATION REFERENCE	702
DATE	JULY '20
STANDARD DRAWING NO.	6030B



North Central Texas Council of Governments

CURB INLET RECESSED

CROSS SECTION & CENTER BEAM



INLET THROAT
N.T.S.

STANDARD DRAWING NO.
6030C

North Central Texas Council of Governments



STANDARD SPECIFICATION REFERENCE
702

DATE
JULY '20
STANDARD DRAWING NO.
6030C

CURB INLET RECESSED

INLET THROAT

GENERAL NOTES:

1. ALL REINFORCING STEEL SHALL BE GRADE 60. DEFORMED REINFORCING BARS AT A DIAMETER & LENGTH AS SHOWN.
2. ALL CONCRETE SHALL BE CLASS "C". ALL EXPOSED CORNERS SHALL BE CHAMFERED 3/4".
3. ALL REINFORCING STEEL SHALL HAVE A MINIMUM COVER OF 2" CLEAR OF THE BARS.
4. 10'-0" OF EXISTING CURB AND GUTTER UPSTREAM AND 10'-0" OF EXISTING CURB AND GUTTER DOWNSTREAM SHALL BE REMOVED AND REPOURED INTEGRALLY WITH EACH INLET.
5. ALL BACK FILLING SHALL BE PERFORMED BY MECHANICAL TAMPING TO 95% STANDARD PROCTOR DENSITY.
6. PRECAST PRODUCTS MAY BE USED AT THE APPROVAL OF THE OWNER.
7. ALLOW 1" MIN. CLEAR SPACE BETWEEN OD OF PIPE OR BOX AND INSIDE WALL OF INLET (OD OF PIPE OR BOX SHOULD ACCOUNT FOR SKEWED CONDITIONS).
8. FIELD CUT & BEND BARS AS NECESSARY TO ACCOMODATE STORM SEWER PIPE.
9. RING & COVER SHALL BE APPROVED BY THE OWNER AND INSTALLED BT CONTRACTOR.
10. WHEN POURING INVERTS, THE BOTTOM SHALL BE SLOPED NO MORE THAN 1/4"/FT TOWARD PIPE.
11. INLET OPENING SHALL BE 6" MIN OR 8" MAX.
12. 10 FT. MAX DEPTH.

STANDARD DRAWING NO.
6030D

CURB INLET RECESSED

GENERAL NOTES

North Central Texas Council of Governments



STANDARD SPECIFICATION REFERENCE

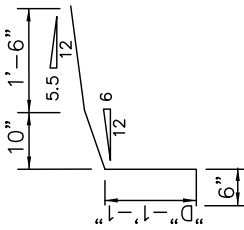
702

DATE

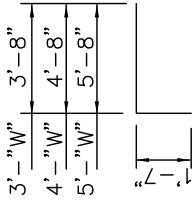
JULY '20

STANDARD DRAWING NO.

6030D



#4 BARS A
N.T.S.



#4 BARS B
N.T.S.

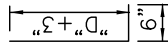
FIELD CUT D BARS
AS NECESSARY AT
TRANSITIONS



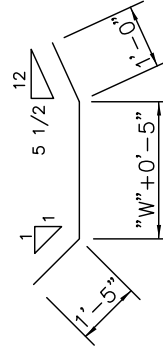
#4 BARS C & D
N.T.S.



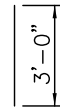
#4 BARS E
N.T.S.



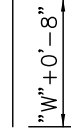
#4 BARS F
N.T.S.



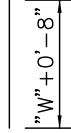
#3 BARS M
N.T.S.



#4 BARS J
N.T.S.



#5 BARS N
N.T.S.



#4 BARS G
N.T.S.

STANDARD DRAWING NO.
6030E

CURB INLET RECESSED
REBAR

North Central Texas Council of Governments



STANDARD SPECIFICATION REFERENCE
702

DATE
JULY '20
STANDARD DRAWING NO.
6030E

SUMMARY OF QUANTITIES FOR CURB INLETS

DEPTH "D"	5'-0" OPENING						10'-0" OPENING						15'-0" OPENING						20'-0" OPENING					
	3'-0"		4'-0"		5'-0"		3'-0"		4'-0"		5'-0"		3'-0"		4'-0"		5'-0"		3'-0"		4'-0"		5'-0"	
	CONC C.Y.	STEEL LBS.	CONC C.Y.	STEEL LBS.	CONC C.Y.	STEEL LBS.	CONC C.Y.	STEEL LBS.	CONC C.Y.	STEEL LBS.	CONC C.Y.	STEEL LBS.	CONC C.Y.	STEEL LBS.	CONC C.Y.	STEEL LBS.	CONC C.Y.	STEEL LBS.	CONC C.Y.	STEEL LBS.	CONC C.Y.	STEEL LBS.	CONC C.Y.	STEEL LBS.
3'-6"	2.87	324	3.23	357	3.59	390	4.41	496	4.95	540	5.50	584	5.94	684	6.67	742	7.40	799	7.48	858	8.40	926	9.31	995
3'-9"	2.96	333	3.32	367	3.69	401	4.54	512	5.09	556	5.64	601	6.12	706	6.86	764	7.60	822	7.70	886	8.63	955	9.55	1024
4'-0"	3.04	353	3.42	390	3.79	428	4.66	537	5.23	585	5.79	633	6.29	737	7.04	799	7.79	861	7.92	923	8.86	996	9.79	1068
4'-3"	3.12	358	3.51	396	3.89	434	4.79	545	5.37	594	5.94	643	6.47	748	7.23	811	7.99	873	8.14	937	9.09	1010	10.03	1083
4'-6"	3.21	376	3.60	417	4.00	457	4.92	573	5.51	624	6.09	675	6.64	786	7.41	850	8.18	915	8.36	984	9.32	1059	10.27	1134
4'-9"	3.29	382	3.69	423	4.10	464	5.05	581	5.65	633	6.24	684	6.82	796	7.60	862	8.37	927	8.59	997	9.55	1073	10.51	1149
5'-0"	3.37	387	3.79	429	4.20	471	5.18	589	5.79	641	6.38	693	7.00	807	7.78	873	8.57	939	8.81	1011	9.78	1087	10.75	1164
5'-3"	3.46	406	3.88	450	4.30	493	5.31	617	5.92	671	6.53	725	7.17	845	7.97	912	8.76	980	9.03	1057	10.02	1136	10.99	1215
5'-6"	3.54	411	3.97	456	4.40	500	5.44	625	6.06	680	6.68	735	7.35	855	8.15	924	8.96	992	9.25	1071	10.25	1150	11.23	1229
5'-9"	3.62	429	4.06	476	4.50	523	5.57	653	6.20	710	6.83	767	7.52	893	8.34	963	9.15	1034	9.48	1118	10.48	1199	11.48	1280
6'-0"	3.71	435	4.16	482	4.61	530	5.70	661	6.34	719	6.98	776	7.70	903	8.53	975	9.35	1046	9.70	1131	10.71	1213	11.72	1295
6'-3"	3.79	444	4.25	492	4.71	540	5.83	676	6.48	735	7.12	793	7.88	925	8.71	997	9.54	1069	9.92	1159	10.94	1242	11.96	1324
6'-6"	3.87	459	4.34	509	4.81	559	5.96	697	6.62	757	7.27	818	8.05	952	8.90	1026	9.74	1100	10.14	1191	11.17	1276	12.20	1361
6'-9"	3.96	464	4.43	515	4.91	566	6.09	705	6.76	766	7.42	827	8.23	962	9.08	1037	9.93	1112	10.36	1205	11.40	1290	12.44	1376
7'-0"	4.04	482	4.53	536	5.01	589	6.22	733	6.90	796	7.57	859	8.40	1000	9.27	1077	10.12	1154	10.59	1252	11.64	1339	12.68	1427
7'-3"	4.12	488	4.62	542	5.12	595	6.35	741	7.04	805	7.72	869	8.58	1010	9.45	1088	10.32	1166	10.81	1265	11.87	1353	12.92	1442
7'-6"	4.21	497	4.71	552	5.22	606	6.48	756	7.17	821	7.87	885	8.76	1032	9.64	1110	10.51	1189	11.03	1293	12.10	1382	13.16	1471
7'-9"	4.29	512	4.80	568	5.32	625	6.61	777	7.31	843	8.01	910	8.93	1059	9.82	1139	10.71	1219	11.25	1326	12.33	1417	13.40	1508
8'-0"	4.37	517	4.90	574	5.42	632	6.74	785	7.45	852	8.16	919	9.11	1069	10.01	1150	10.90	1231	11.48	1339	12.56	1431	13.64	1522
8'-3"	4.46	526	4.99	584	5.52	642	6.87	800	7.59	868	8.31	936	9.28	1091	10.19	1173	11.10	1254	11.70	1367	12.79	1459	13.88	1551
8'-6"	4.54	541	5.08	601	5.63	661	7.00	820	7.73	891	8.46	961	9.46	1118	10.38	1201	11.29	1285	11.92	1399	13.02	1494	14.12	1588
8'-9"	4.62	550	5.17	611	5.73	672	7.13	836	7.87	907	8.61	978	9.64	1139	10.56	1224	11.49	1308	12.14	1427	13.26	1522	14.36	1617
9'-0"	4.71	565	5.27	628	5.83	691	7.26	856	8.01	929	8.75	1002	9.81	1166	10.75	1252	11.68	1339	12.36	1460	13.49	1557	14.60	1654
9'-3"	4.79	574	5.36	638	5.93	701	7.39	872	8.15	945	8.90	1019	9.99	1187	10.93	1275	11.87	1362	12.59	1487	13.72	1585	14.85	1683
9'-6"	4.87	588	5.45	654	6.03	720	7.52	892	8.29	968	9.05	1044	10.16	1214	11.12	1303	12.07	1393	12.81	1520	13.95	1620	15.09	1720
10'-0"	5.04	603	5.64	670	6.24	738	7.78	916	8.56	993	9.35	1070	10.51	1246	11.49	1337	12.46	1428	13.25	1561	14.41	1662	15.57	1764

NOTE:

- FOR CONVENIENCE, DEPTHS OF INLETS SHOWN IN ABOVE TABLES ARE IN INCREMENTS OF 3 INCHES BUT ANY DEPTHS OTHER THAN THOSE SHOWN ABOVE MAY BE USED WHEREVER DEEMED NECESSARY. QUANTITIES FOR OTHER DEPTHS FALLING WITHIN THE LIMITS OF THE TABLE MAY BE FOUND BY INTERPOLATION.
- DEPTHS GREATER THAN 10' NEED TO BE STRUCTURALLY ENGINEERED.

STANDARD DRAWING NO.
6030G

CURB INLET RECESSED
SUMMARY OF QUANTITIES

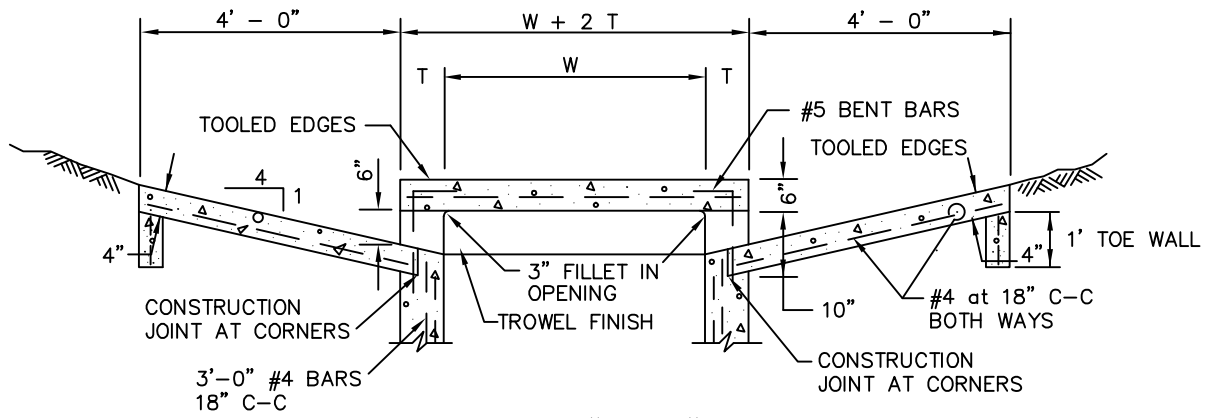
North Central Texas Council of Governments



STANDARD SPECIFICATION REFERENCE
702

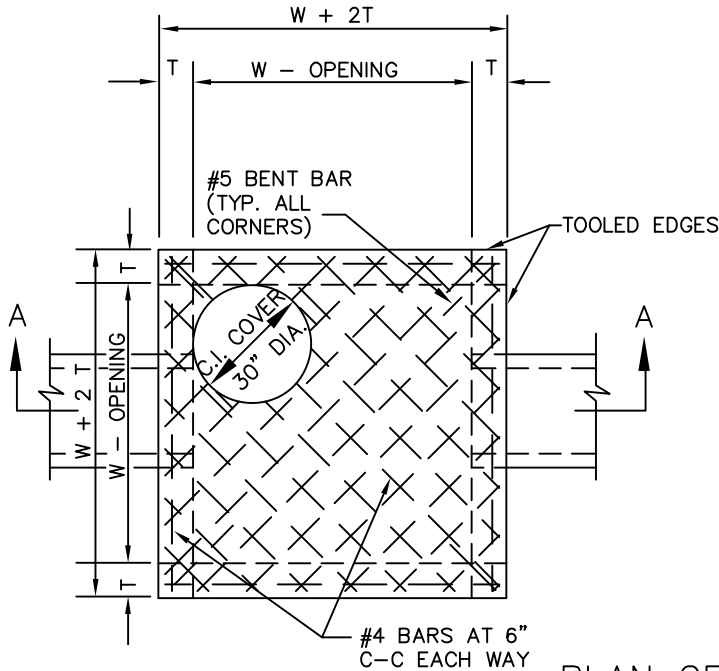
DATE
JULY '20

STANDARD DRAWING NO.
6030G



SECTION "A-A"

N.T.S.



PLAN OF TOP SLAB

N.T.S.

INLET SIZE	T	W
2' SQUARE	7"	2'-0"
4' SQUARE	7"	4'-0"
5' SQUARE	8"	5'-0"
6' SQUARE	9"	6'-0"

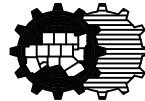
NOTES:

1. MATERIAL AND WORKMANSHIP SHALL CONFORM WITH THE REQUIREMENTS OF NCTCOG STANDARD SPECIFICATIONS FOR STANDARD CONCRETE MANHOLES. MINIMUM CLASS "C" CONCRETE.
2. LAYERS OF REINFORCING STEEL NEAREST THE INTERIOR AND EXTERIOR SURFACES SHALL HAVE A COVER OF 2" CLEAR OF BARS, UNLESS OTHERWISE NOTED.
3. FOR DETAILS OF REINFORCING OF LOWER PORTION OF INLET SEE APPROPRIATE SQUARE MANHOLE DETAILS.
4. DEPTH OF DROP INLET FROM FINISHED GRADE TO FLOW LINE OF INLET IS VARIABLE. APPROXIMATE DEPTH WILL BE SHOWN ON PLANS AT LOCATION OF INLET.
5. ALL STANDARD DROP INLETS SHALL HAVE ONE OPENING ON EACH SIDE UNLESS OTHERWISE SHOWN ON PLANS.
6. TOP SLAB MAY BE REINFORCED SAME AS 4' SQUARE MANHOLE.
7. PRECAST PRODUCTS MAY BE USED AT THE APPROVAL OF THE OWNER.
8. ALLOW 1" MIN CLEAR SPACE BETWEEN OD OF PIPE OR BOX AND INSIDE WALL OF INLET (OD OF PIPE OR BOX SHOULD ACCOUNT FOR SKEWED CONDITIONS).
9. DEPTHS OF GREATER THAN 10' NEED TO BE STRUCTURALLY ENGINEERED.

DROP INLET

2', 4', 5', OR 6' SQUARE

North Central Texas Council of Governments



STANDARD SPECIFICATION REFERENCE

702

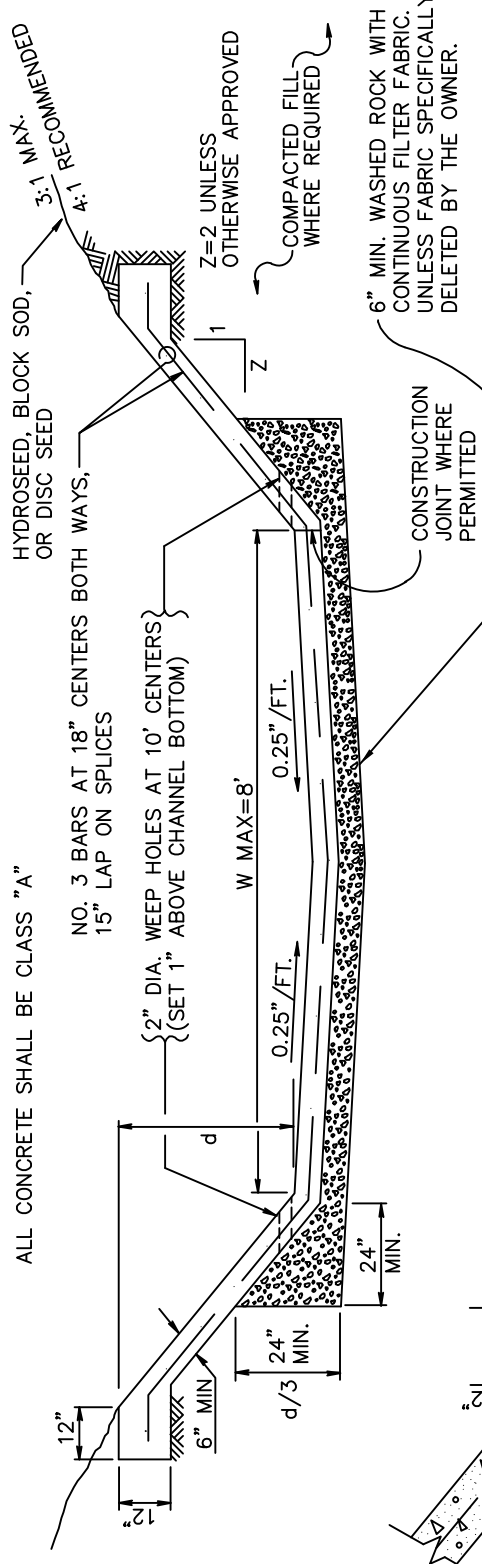
DATE
JULY '20

STANDARD DRAWING NO.
6040

* GEO TEXTILE RECOMMENDED AT CONNECTION OF TOP OF SLOPE TO EARTHEN MATERIAL.

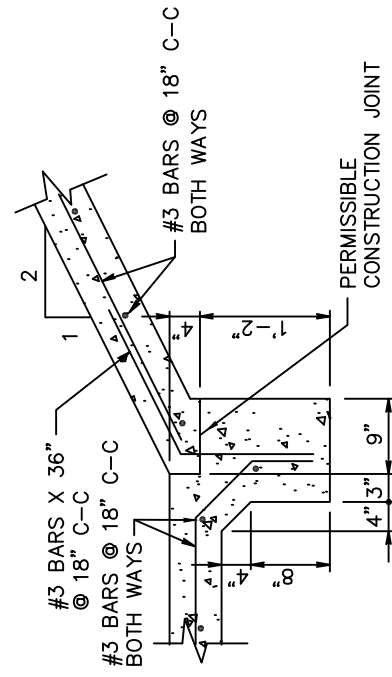
FILL AREAS SHALL BE COMPACTED TO 95% STD. PROCTOR DENSITY AT OPTIMUM MOISTURE CONTENT PRIOR TO CHANNEL EXCAVATION.

ALL CONCRETE SHALL BE CLASS "A"



REINFORCED CONCRETE CHANNEL SECTION
N.T.S.

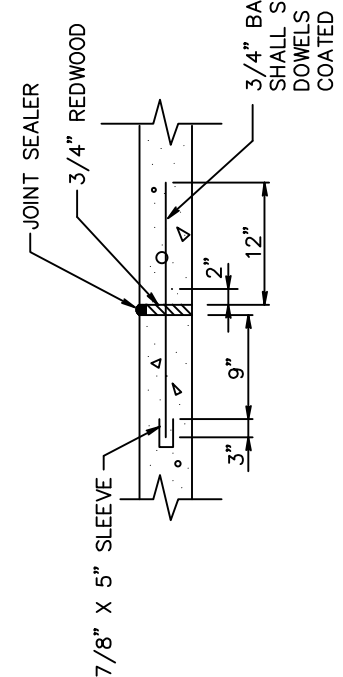
CONSTRUCTION JOINT
N.T.S.




ALTERNATE CONSTRUCTION JOINT
N.T.S.

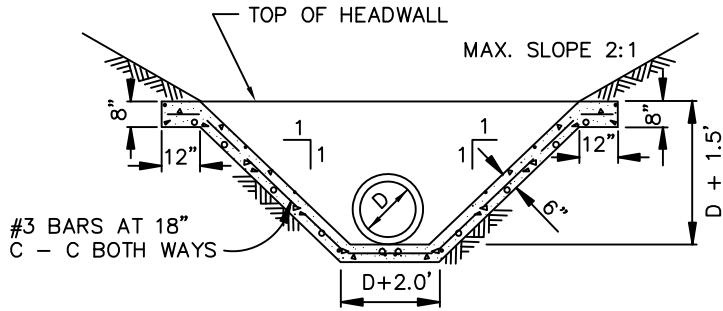
TRANSVERSE EXPANSION JOINT

SPACE 100' C-C AND USE AT ENDS OF CURVES - P.C. AND P.T. N.T.S.

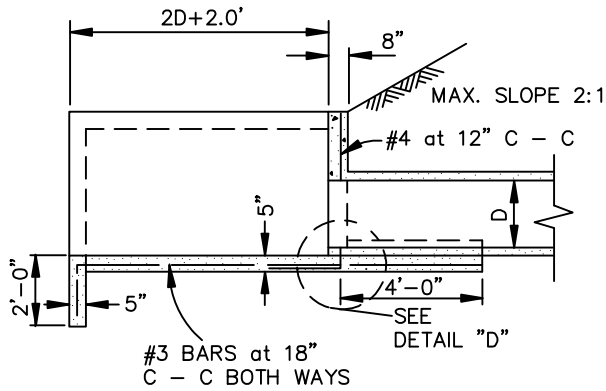


*REFER TO ISWM FOR ALTERNATE BIOSWALE OPTIONS

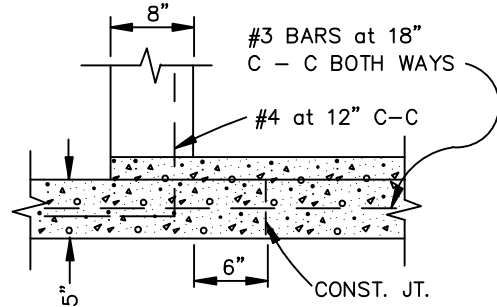
STANDARD DRAWING NO. 6050	 North Central Texas Council of Governments	STANDARD SPECIFICATION REFERENCE 803.3
		DATE JULY '20
LOW FLOW CHANNEL LINING CONCRETE REINFORCED		STANDARD DRAWING NO. 6050



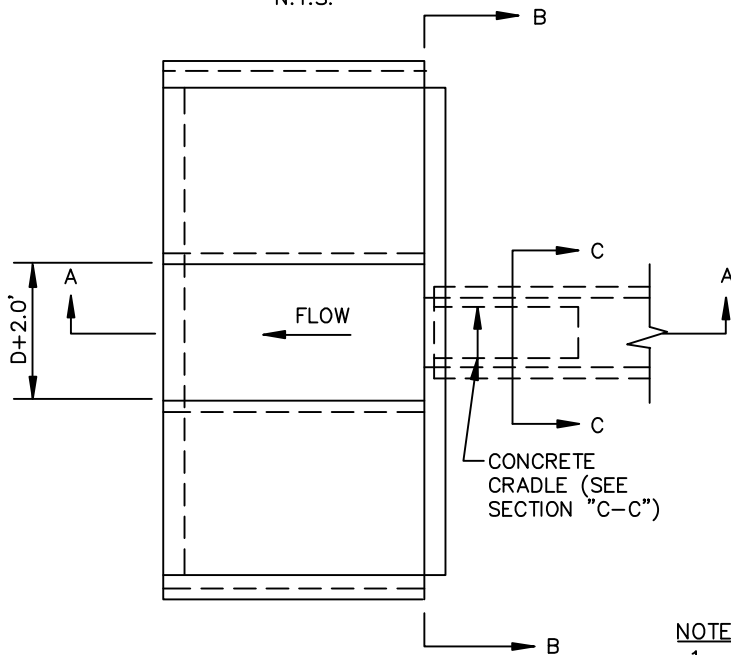
SECTION "B-B"
N.T.S.



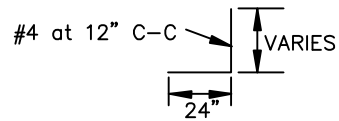
SECTION "A-A"
N.T.S.



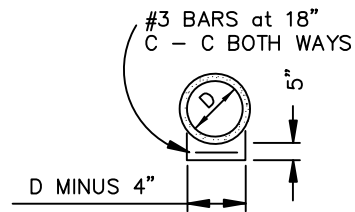
DETAIL "D"
N.T.S.



PLAN
N.T.S.



BAR DETAIL
N.T.S.



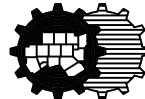
SECTION "C-C"
N.T.S.

NOTES:

1. CONCRETE SHALL BE CLASS "C"
2. SEE TXDOT DETAILS FOR ADDITIONAL HEADWALL OPTIONS.

CONCRETE APRON
VERTICAL HEADWALL

North Central Texas Council of Governments

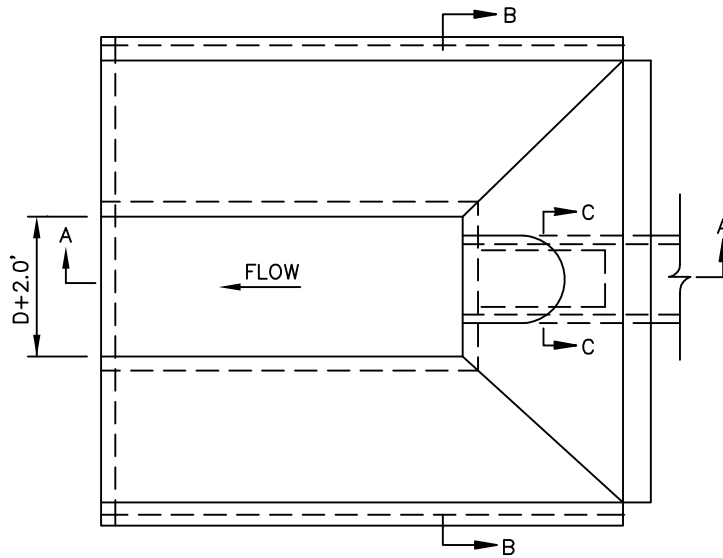


STANDARD SPECIFICATION REFERENCE

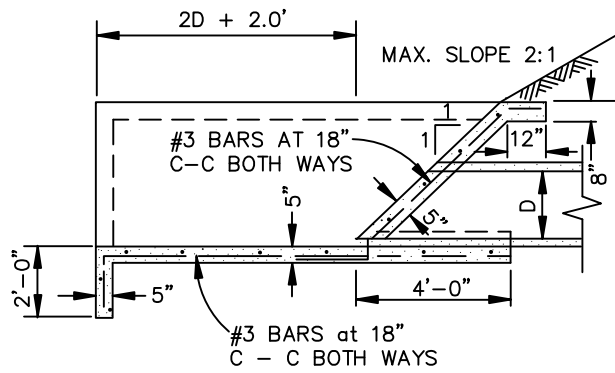
803.3

DATE
JULY '20

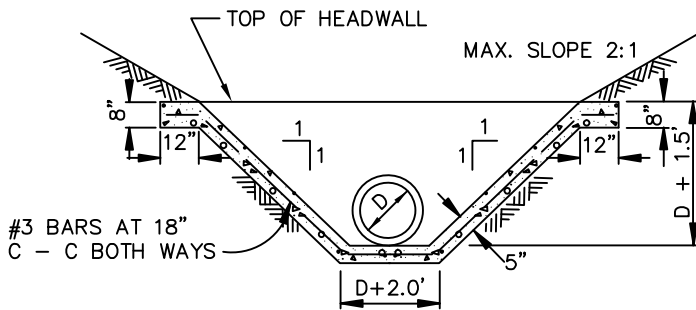
STANDARD DRAWING NO.
6060



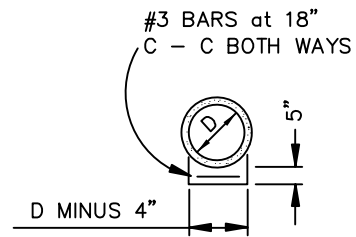
PLAN
N.T.S.



SECTION A-A
N.T.S.



SECTION B-B
N.T.S.



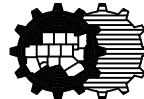
SECTION C-C
N.T.S.

NOTES:

1. CONCRETE SHALL BE CLASS "A".
2. WHEN SITE IT NOT APPLICABLE, SEE TXDOT

CONCRETE APRON
SLOPING HEADWALL

North Central Texas Council of Governments

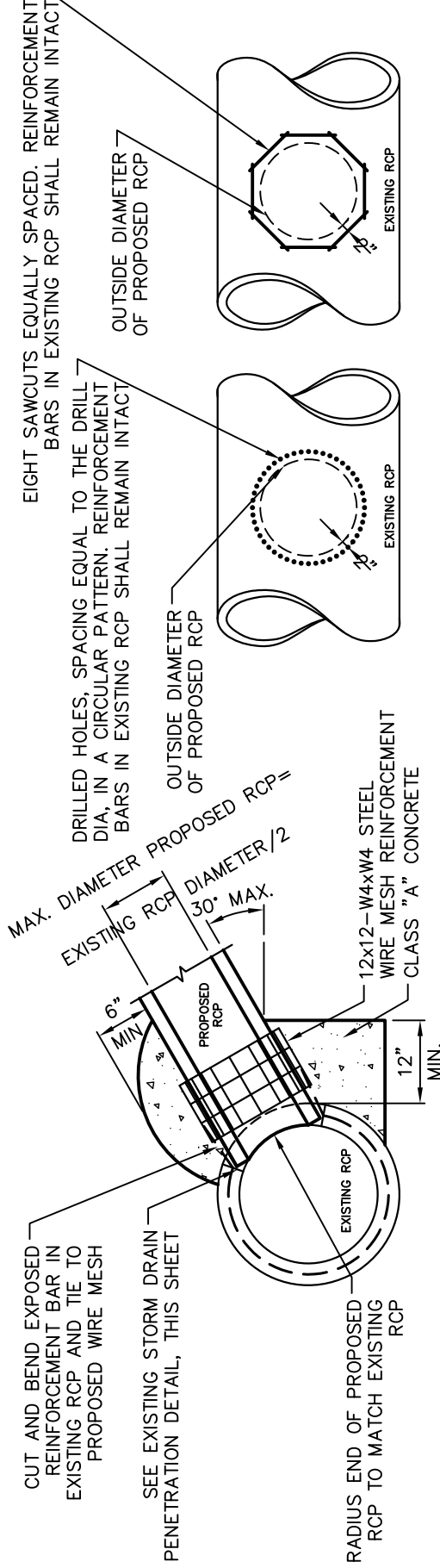


STANDARD SPECIFICATION REFERENCE

803.3

DATE
JULY '20

STANDARD DRAWING NO.
6070



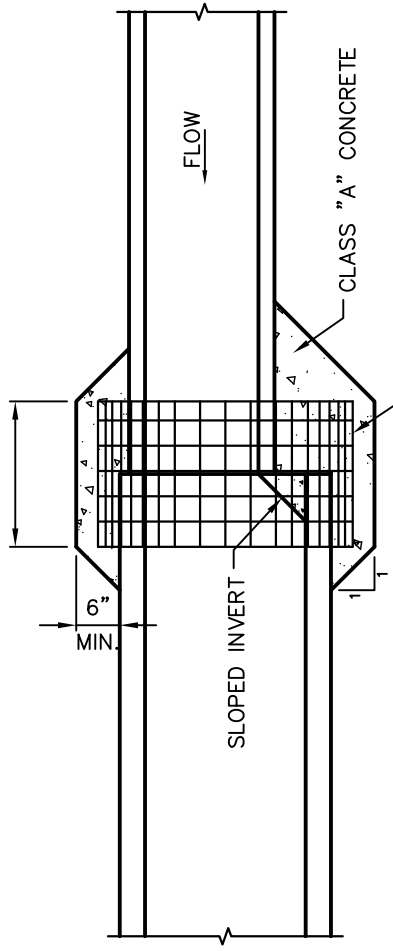
EXISTING STORM DRAIN PENETRATION METHODS
N.T.S.

LENGTH EQUALS DIAMETER OF SMALLER PIPE

CONNECTION OF PROPOSED TO EXISTING RCP STORM DRAIN
N.T.S.

NOTES:

1. THE CONNECTION METHODS SHOWN ON THIS DETAIL SHALL ONLY BE EMPLOYED WHEN THE USE OF A PREFABRICATED RCP CONNECTION IS NOT POSSIBLE, AND WITH THE APPROVAL OF THE OWNER.
2. NO. 3 BARS ON 6" CTRS. MAY BE USED IN PLACE OF WIRE MESH REINFORCEMENT.
3. FOR OTHER PIPE MATERIALS, REFER TO MANUFACTURER'S DETAILS.



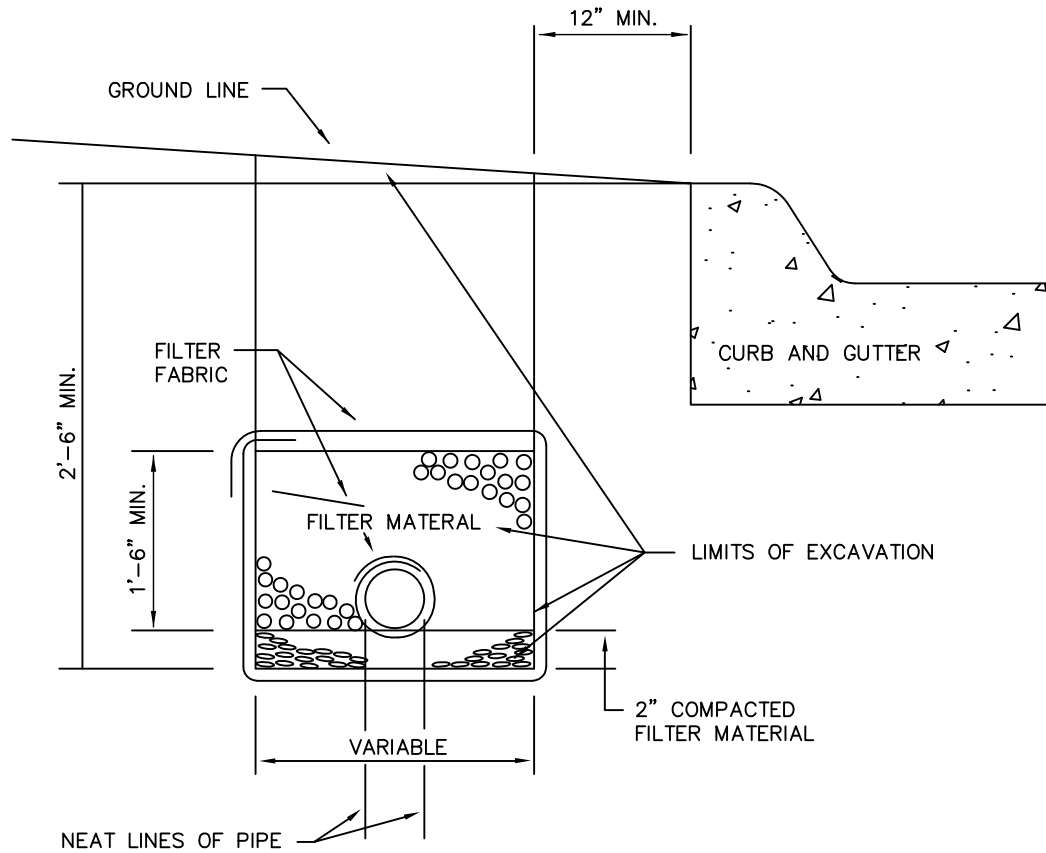
PIPE COLLAR FOR FIELD CONNECTION
N.T.S.

STANDARD DRAWING NO.
6080

STORM DRAIN PIPE COLLAR
FOR FIELD CONNECTION



North Central Texas Council of Governments
STANDARD SPECIFICATION REFERENCE
501, 702
DATE
JULY '20
STANDARD DRAWING NO.
6080



SECTION
N.T.S.

LIMITS OF EXCAVATION

DEPTH OF TRENCH (FT.)	DIST. IN FT. OUTSIDE NEAT LINES OF PIPE SUBDRAIN
0 TO 6	1.00
6 TO 10	1.50
10 TO 15	2.00
OVER 15	2.50

FILTER MATERIAL SPECIFICATIONS

SIEVE SIZE	PERCENTAGE RETAINED ON SIEVE	
	TYPE A	TYPE B
1 1/2	----	0 - 10
3/4	0 - 10	20 - 40
3/8	15 - 35	----
NO. 4	35 - 55	40 - 60

TYPES OF PIPE ACCEPTABLE FOR USE AS SUBDRAIN

1. PERFORATED CORRUGATED METAL PIPE.
2. PERFORATED PVC PIPE.
3. PERFORATED POLYETHYLENE PIPE.

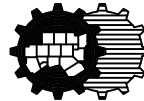
MATERIAL FINER THAN NO. 4 SIEVE

4	----
20	35 - 65
50	75 - 100

SUBDRAINS

PAVEMENT SUBGRADE

North Central Texas Council of Governments



STANDARD SPECIFICATION REFERENCE

301

DATE
JULY '20

STANDARD DRAWING NO.
6090