

# Unplanned Potable Water Discharge

When a discharge is discovered, record notification time, inspector arrival and responding crew arrival time. If there is potential for an environmental impact, a report must be submitted to TCEQ no later than 24 hours of discovery of unplanned discharge. (Texas Water Code Sec. 26.039)

Discharge entering storm drain or receiving water?

No

Use internal operating procedures and BMPs

**BMPs:** Implement appropriate BMPs (TAC §327.5)

- Administrative
- Dechlorination—neutralize the effects of the incident
- Erosion/sediment control

**Monitor:** Collect samples for pH, turbidity and chlorine residual, if possible (*Note:* if discharge continues after site is secured, sampling may occur during repair activities).

**Compare to Benchmarks:** Is Chlorine Residual >0.1 mg/L, Turbidity >0.3 NTU, and pH <6.0 or >9.0 in 95% of samples in a month? These recommendations are based on guidance from the TCEQ and the Texas Water Code. Local recommendations maybe more stringent.

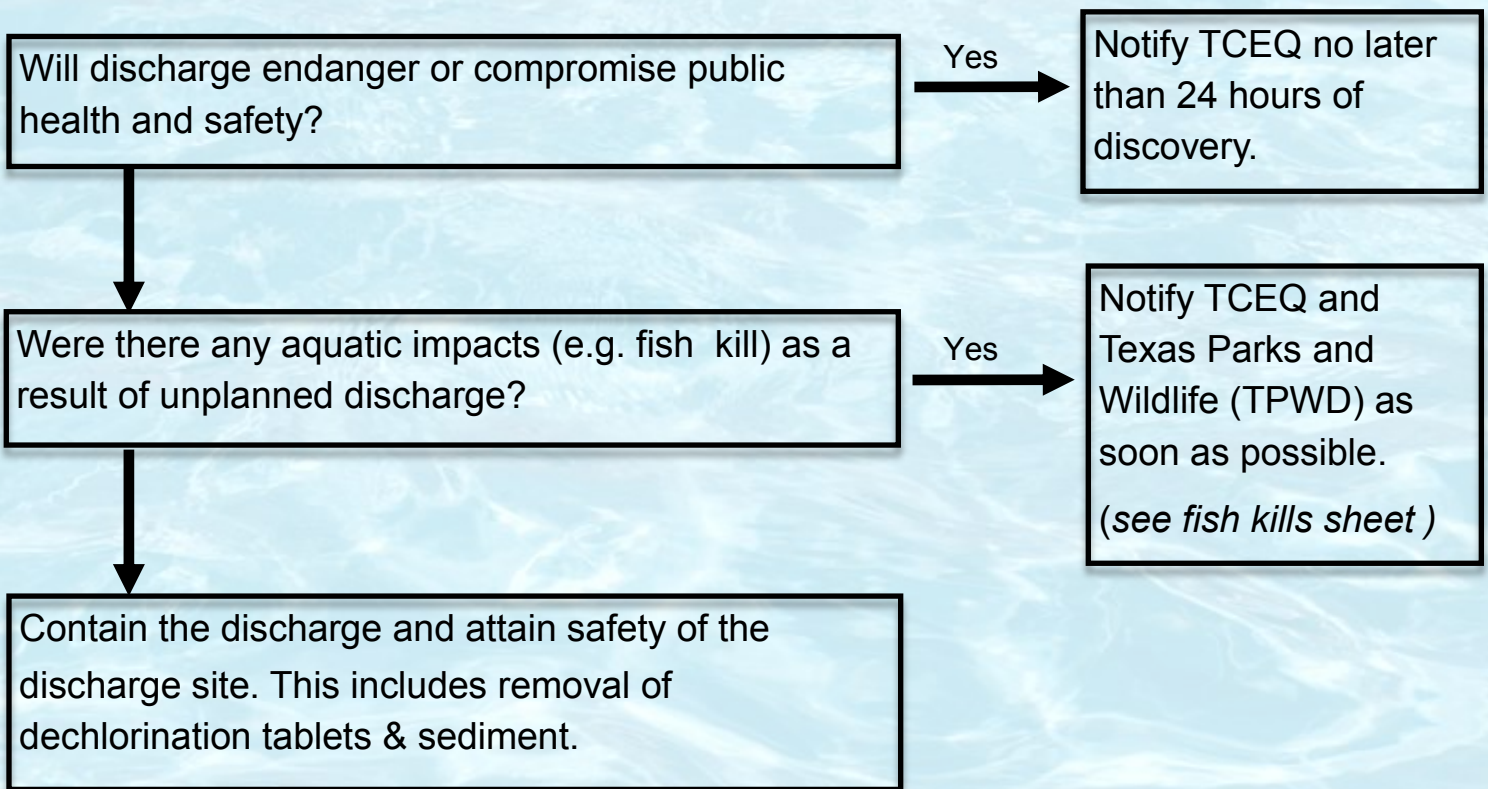
Yes

If discharge continues, modify BMPs as needed, collect additional sample.

**Record Data:** Record response times, discharge and monitoring data at each discharge. Estimate the amount of water discharged (volume) .

*Continued on reverse*





## **Helpful Links**

### **TPWD Kills and Spills Team**

[http://tpwd.texas.gov/landwater/water/environconcerns/kills\\_and\\_spills/](http://tpwd.texas.gov/landwater/water/environconcerns/kills_and_spills/)

### **TCEQ Water Quality Information**

<https://www.tceq.texas.gov/waterquality>

### **EPA National Pollutant Discharge Elimination System (NPDES)**

<http://www.epa.gov/npdes>

### **North Central Texas Council of Government's IDDE Field Investigation Guide**

[http://www.nctcog.org/envir/see-clean/stormwater/program-areas/illicit-discharge/documents/IDDEFieldGuide\\_Final.pdf](http://www.nctcog.org/envir/see-clean/stormwater/program-areas/illicit-discharge/documents/IDDEFieldGuide_Final.pdf)





## Reporting Fish and/or Wildlife Kills

### **Reporting a Kill—Make note of the following items if possible:**

- Take pictures
- Location, date, and time
- Water color, clarity, and any odor
- Recent weather
- Relative water temp to ambient air temperature
- pH, chlorine, Dissolved Oxygen (DO), turbidity, conductivity, and Total Dissolved Solids (TDS)
- Number, size, and species of affected organisms
- Condition and behavior of animals or organisms
- Written report to TPWD & TCEQ within 5 days of the kill

### **TCEQ Region 4 Reporting—Notification Guidelines**

#### **Fish Kills = Automatic Enforcement Action (30 TAC §327)**

- During business hours
  - Call TCEQ R4 main number, (817) 588-5800, ask to speak with person answering calls for the Water Section
- Outside business hours—Emergency/Spill Hotline at (800) 832-8224

#### **For routine potable water discharges, please use one of the following reporting methods:**

- Send email to [WWTeamR4@tceq.texas.gov](mailto:WWTeamR4@tceq.texas.gov)
- Send fax to (817) 588-5701
- Call TCEQ R4 main number, (817) 588-5800
- After hours, dial “1” to leave message

### **TPWD Notification Guidelines— Call Kills and Spills Team (KAST)**

#### **24 hour Communications Centers - (512) 389-4848 or (281) 842-8100**

- TPWD staff will relay the information directly to the Regional Biologist





## Common Freshwater Fish in North Central Texas



**Largemouth Bass**

- Multiple soft rays in the dorsal fin
- Dull green base color
- Dark patterns on sides



**Bluegill (Sunfish)**

- Yellow belly
- Spiny dorsal fin
- Upper sides dark olive green blending to brown



**Green Sunfish**

- Dark green
- Almost blue, fading to lighter green on sides
- Faint vertical bars on sides



**Longear Sunfish**

- Bright orange or scarlet
- Abnormally long opercle (ear) flap
- Head and fins have turquoise markings





**Channel Catfish**

- Small black spots
- Olive brown to slate blue
- Large prominent whiskers
- Forked Tail



**Yellow Bullhead Catfish**

- White chin barbels
- No well forked tail
- Large prominent whiskers



**Black Bullhead Catfish**

- Black chin barbels
- No well forked tail
- Large prominent whiskers



**Common Carp**

- Large scales
- Barbels, no whiskers
- Typically orange to yellow



**Crappie**

- White to silvery with black spots
- May have green hue
- Dark black head





**River Carpsucker**

- Blue-green sides
- Reddish-orange pectoral and tail fins
- Diamond shaped scales



**Smallmouth Buffalo (Carp)**

- Arched back
- Large eyes
- Large, close-knit scales



**Spotted Gar**

- Long, cylindrical bodies
- Dark roundish spots on head
- Many sharp teeth



**Red Shiner (minnow)**

- Blue-green sides
- Reddish-orange pectoral and tail fins
- Diamond shaped scales



**Central Stoneroller (minnow)**

- Olive coloration with cream colored belly
- Forked tail
- Curved shape scales



# Common Freshwater Wildlife in North Central Texas



**Small mouth Salamander**

- Black dorsal color
- Light colored flecks on sides
- Small head with large body and tail



**Green Toad**

- Flat head and body
- Many warts on back
- Bright green or yellow-green coloration



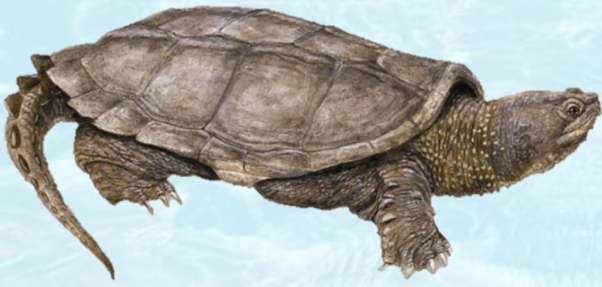
**Texas Toad**

- Mainly gray
- Brown or yellow-green spots
- Rounded body with small warts



**Texas 'Red Swamp' Crawfish**

- Dark red to nearly black
- Wedge shaped black strip on abdomen
- 2-5 inches long



**Snapping Turtle**

- Long tail
- Large head
- Large hooked beak



**Red-eared Slider**

- Red or orange stripe behind each eye
- Green to brown skin with yellow stripes
- Green shell with yellow lines-will darken overtime



**Softshell Turtle**

- Soft, flexible shell
- Shell lacks spines or bumps; leathery texture
- White or black spots on 2/3 of shell