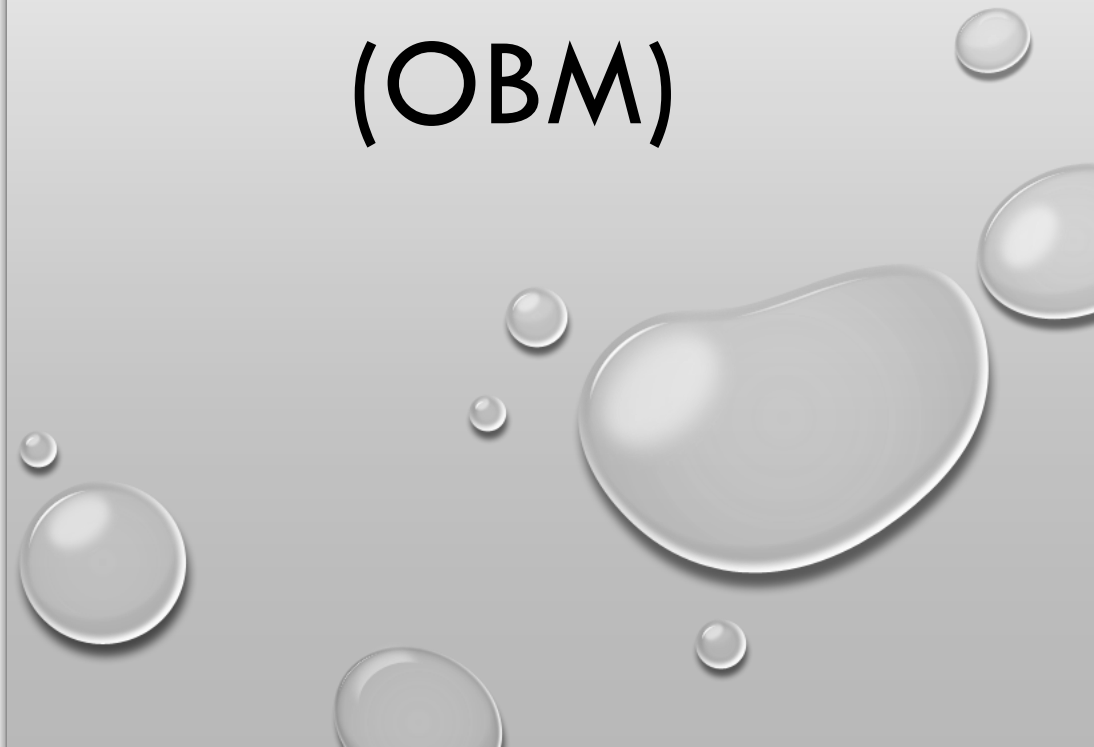
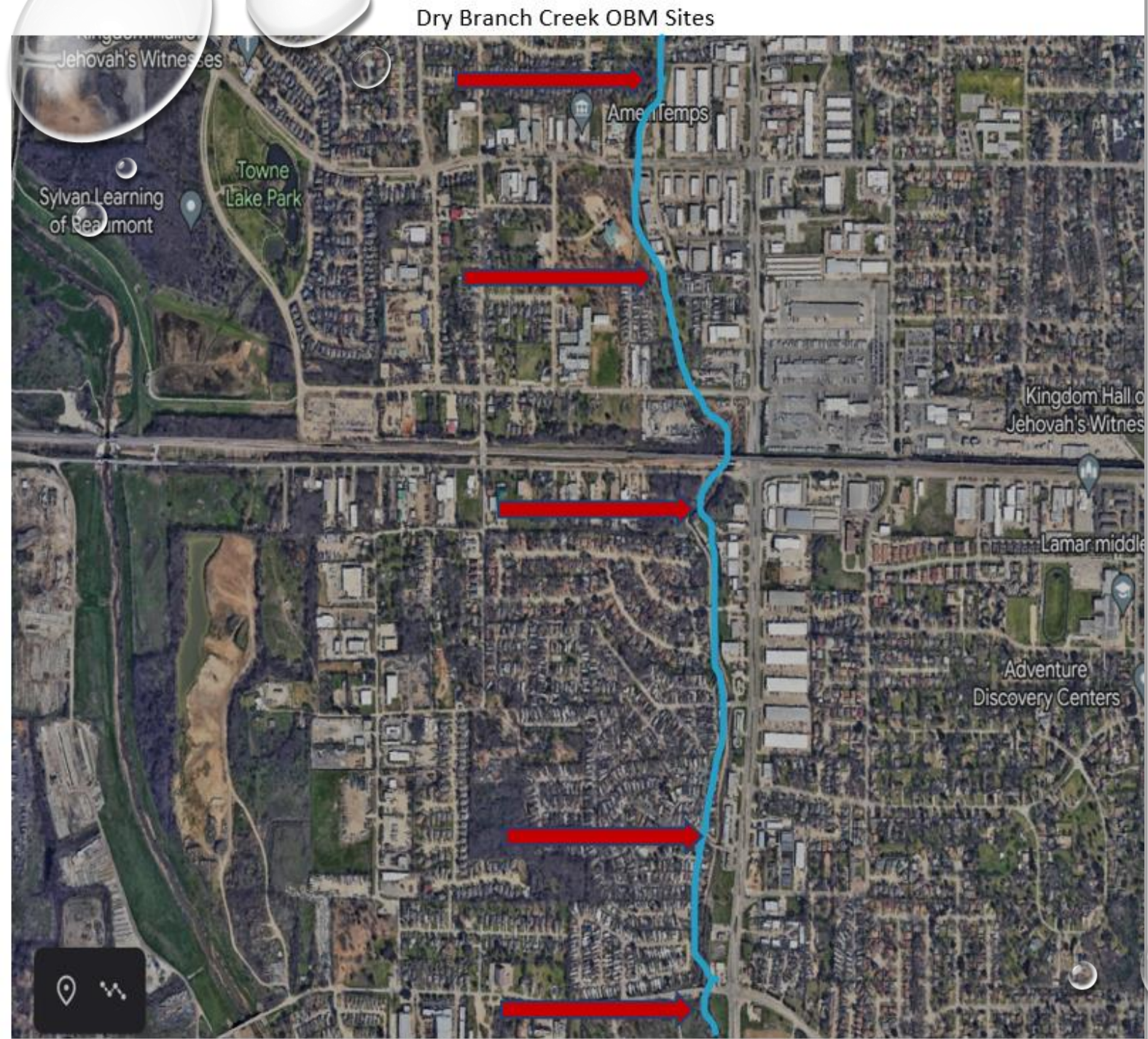


# OPTICAL BRIGHTENER MONITORING (OBM)



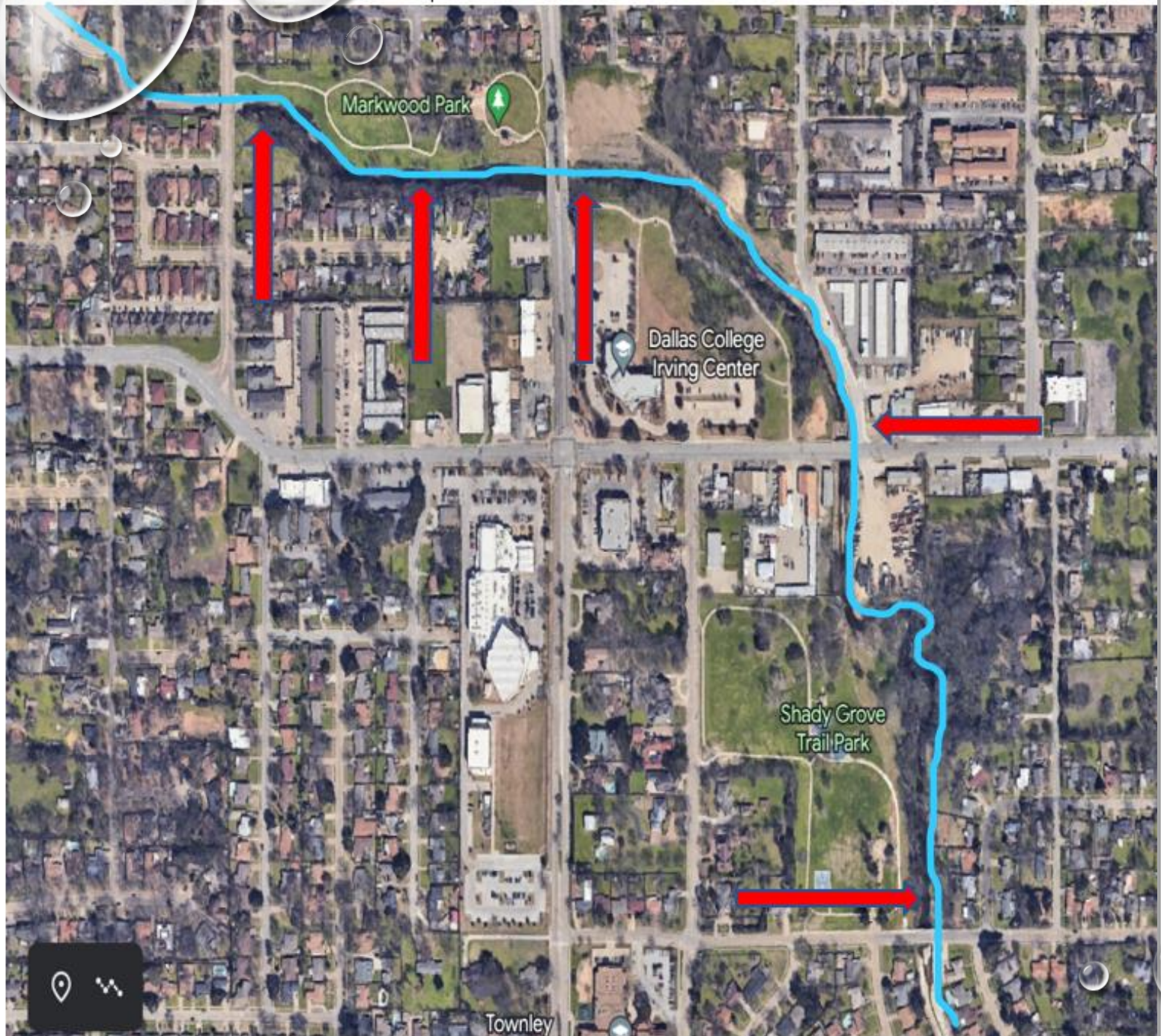


# Dry Branch Creek OBM Sites



# DRY BRANCH CREEK SAMPLING STATIONS





# WEST IRVING BRANCH SAMPLING STATIONS





# OBM STEP BY STEP







# THE RIG





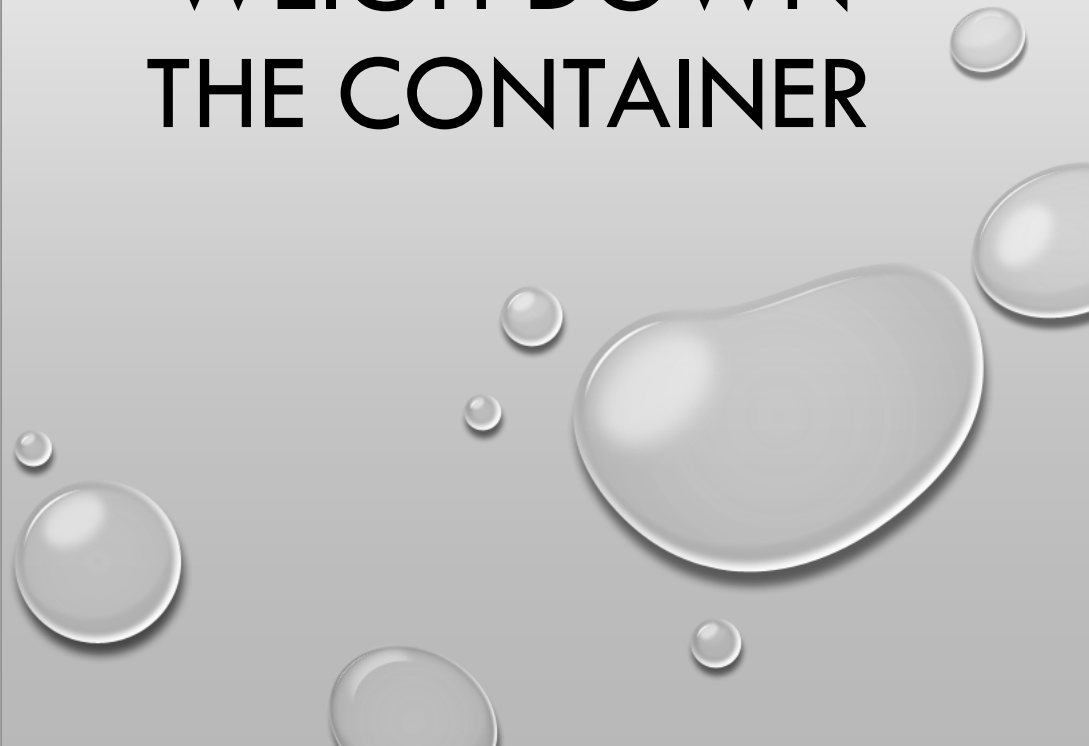


# MEDIA CONTAINER





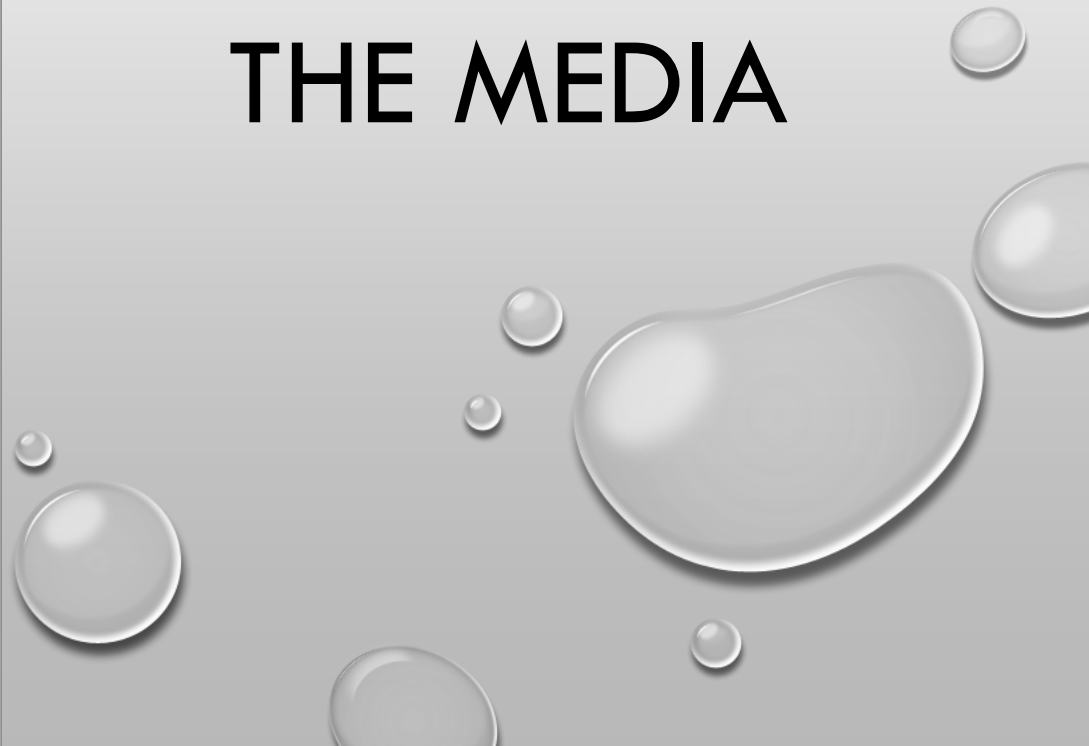
**ROCKS ARE  
USED TO  
WEIGH DOWN  
THE CONTAINER**







# THE MEDIA







**AVOID TOUCHING  
THE ACTUAL MEDIA.  
USE THE PLASTIC  
WRAP TO RELEASE**







**MEDIA INSIDE  
CONTAINER**







**DEPLOY IN  
CENTER OF  
STREAM OR  
WHERE MOST  
FLOW IS GOING**







**COLLECTION**



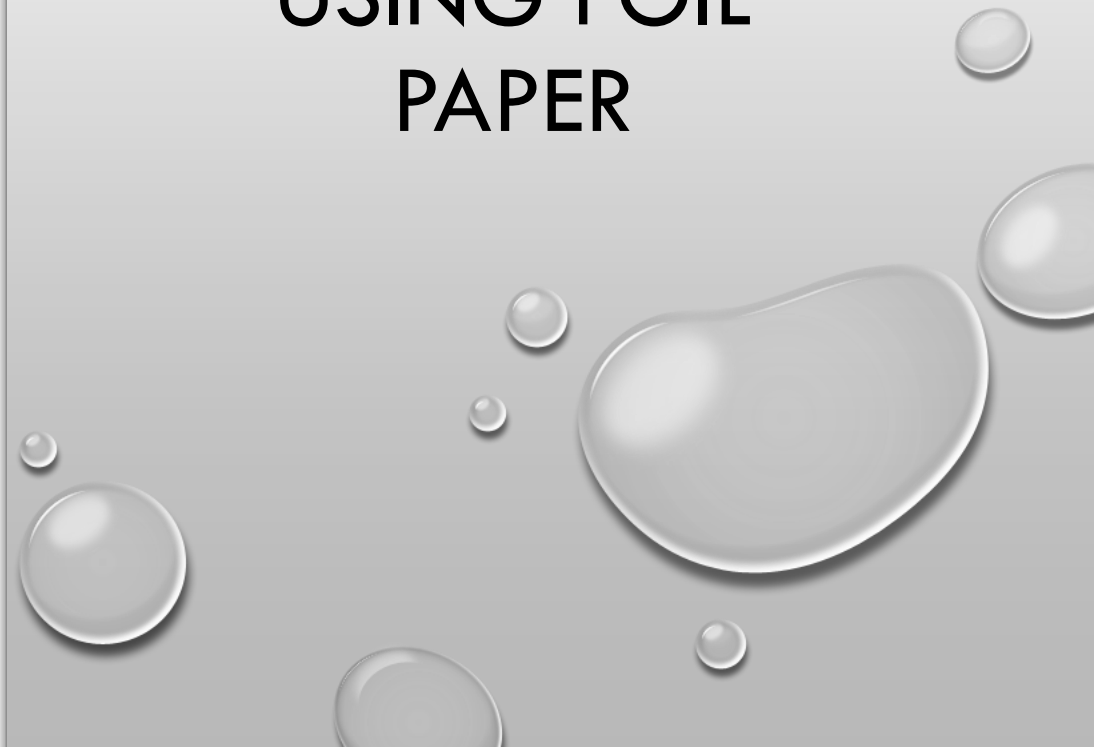








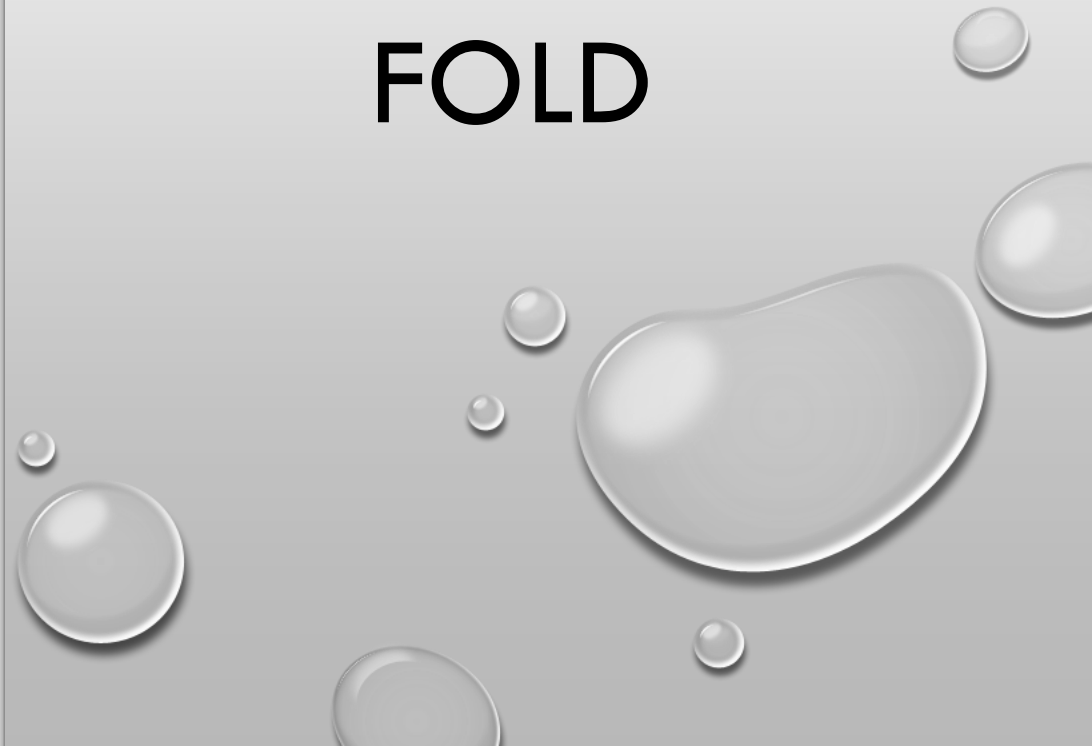
**FOLD AND  
SQUEEZE OUT  
EXCESS WATER  
USING FOIL  
PAPER**







**GIVE THE  
FOIL PAPER  
ONE MORE  
FOLD**







**PUT BACK  
INSIDE BAG**

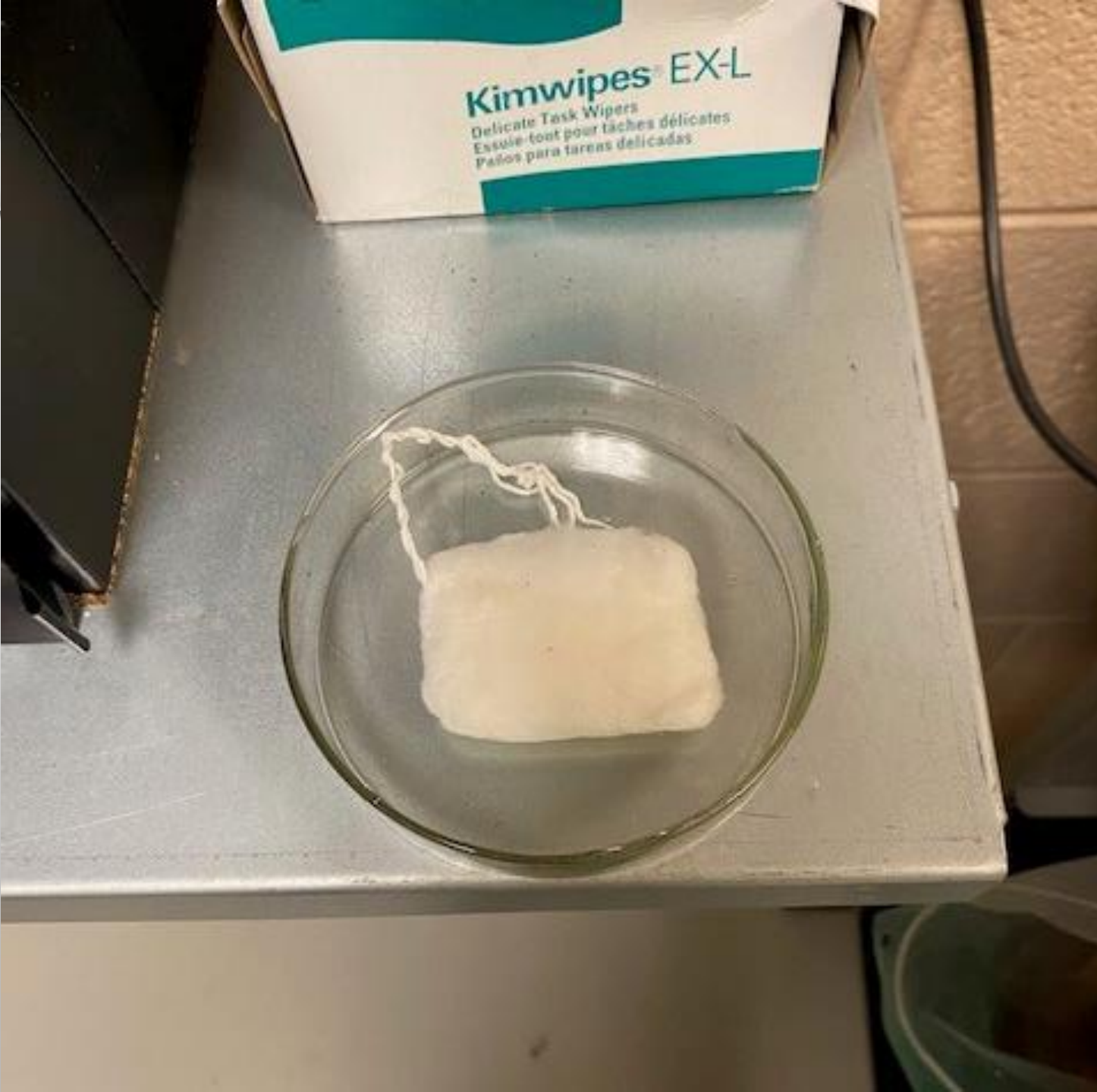




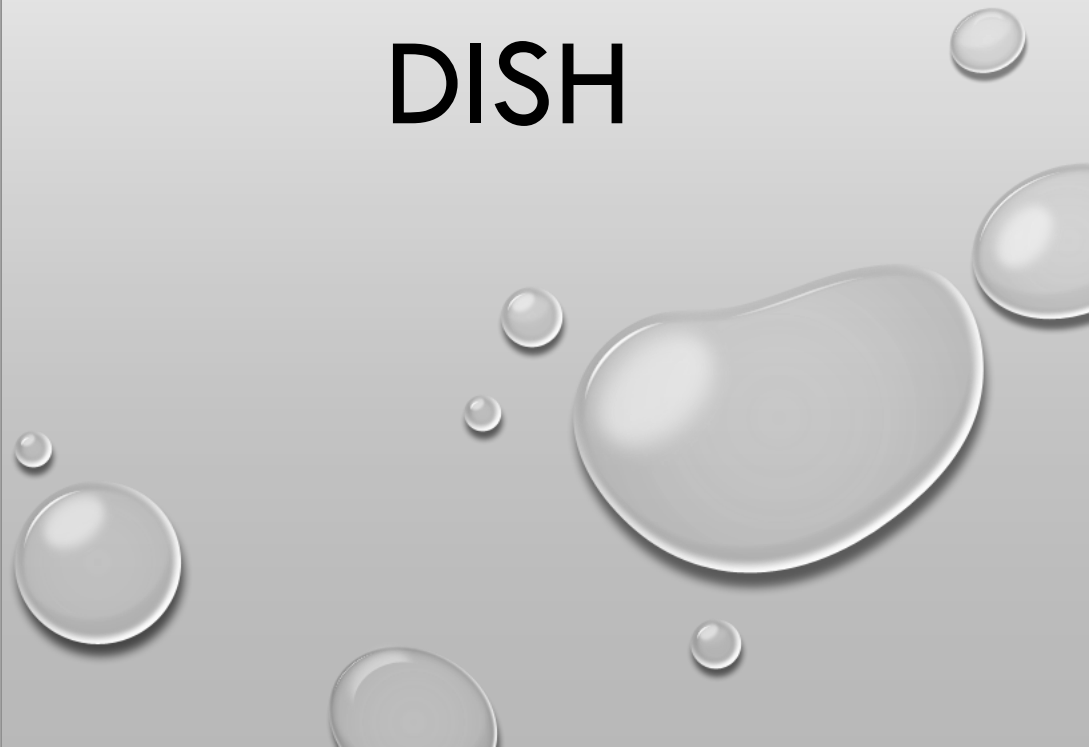
**VOILA!!**



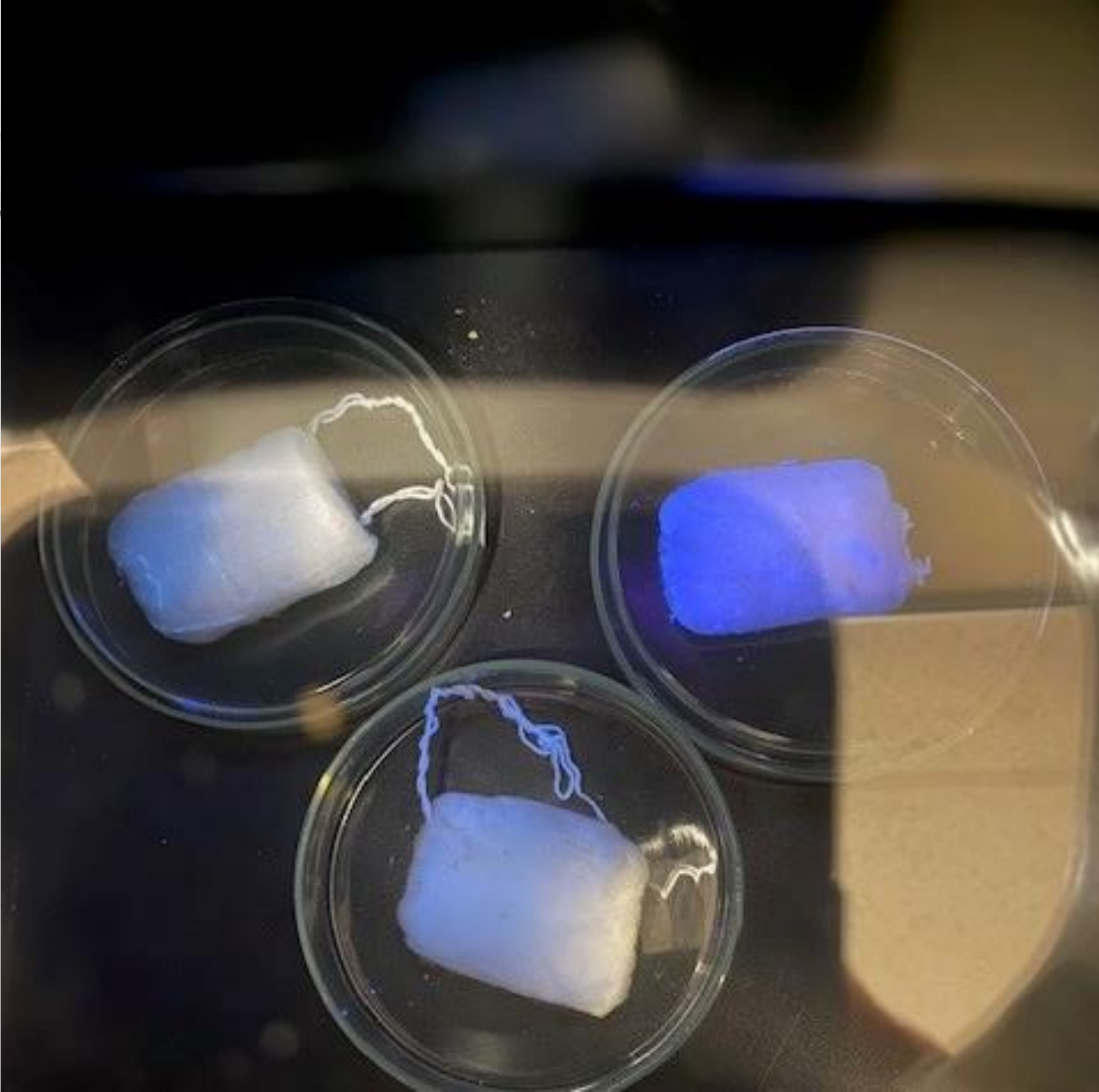




**IN THE LAB,  
PLACE MEDIA  
ON PETRI  
DISH**







**COMPARE  
AGAINST MEDIA  
STANDARDS AND  
RECORD DATA**





# OPTICAL BRIGHTNER MONITORING

| Date:        |       |       |       |       |       | Sampler: |           |
|--------------|-------|-------|-------|-------|-------|----------|-----------|
| Field Deploy |       |       |       |       |       | Ammonia  | E. Coli   |
| Initial Wet  |       |       | Dry   |       |       |          |           |
| ID#1:        | ID#2: | ID#3: | ID#1: | ID#2: | ID#3: | mg/L     | MPN/100ml |
| DB-1         |       |       |       |       |       |          |           |
| DB-2         |       |       |       |       |       |          |           |
| DB-3         |       |       |       |       |       |          |           |
| DB-4         |       |       |       |       |       |          |           |
| DB-5         |       |       |       |       |       |          |           |
| WIB-1        |       |       |       |       |       |          |           |
| WIB-2        |       |       |       |       |       |          |           |
| WIB-3        |       |       |       |       |       |          |           |
| WIB-4        |       |       |       |       |       |          |           |
| WIB-5        |       |       |       |       |       |          |           |





**HANG TO DRY  
THEN RE-READ  
MEDIA ONCE  
DRIED. RECORD  
DATA**







**QUESTIONS?**