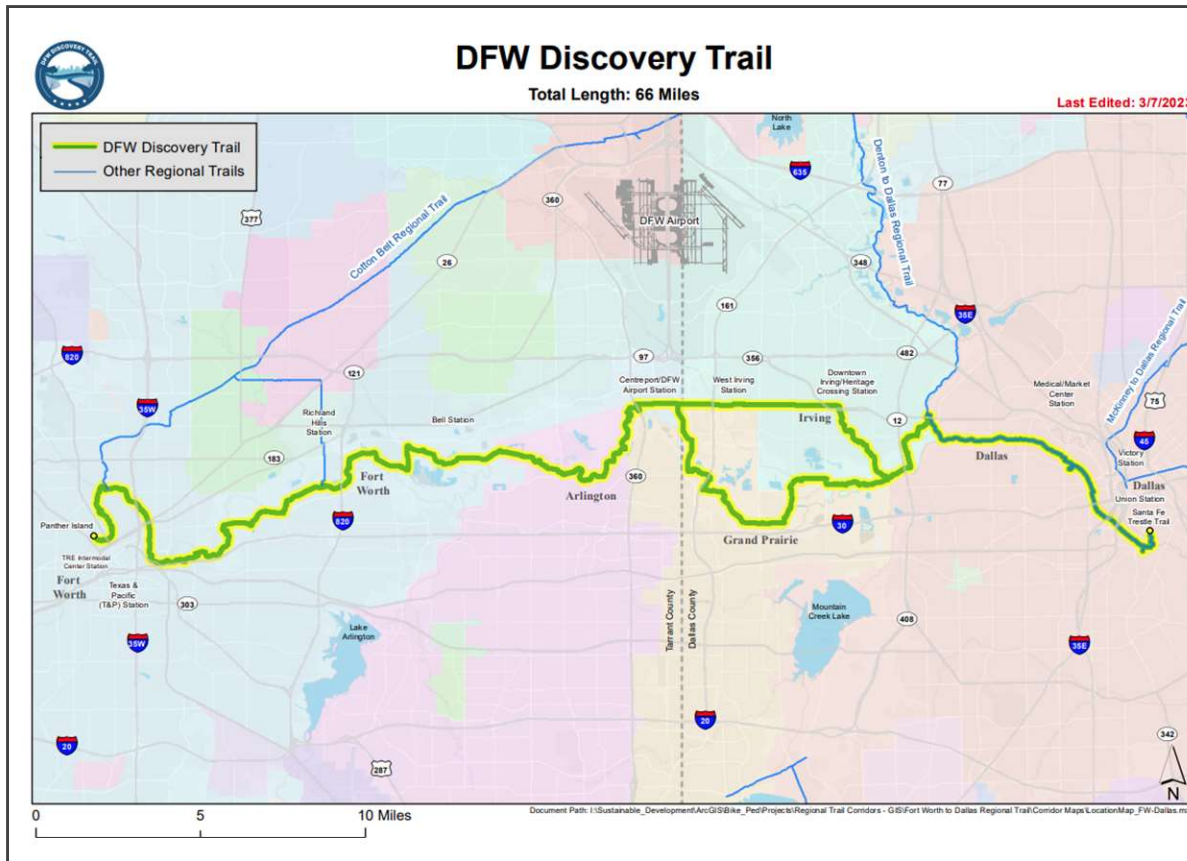


An Arlington Tour of the DFW Discovery Trail

This 30-year effort to connect downtown Fort Worth with downtown Dallas by trail was initiated back in 1996, planned by 2013, funded by 2019, branded by 2023, and will hopefully be completed by the end of 2026.



Regional Trail Extent

The DFW Discovery Trail follows along the West Fork of the Trinity River and links Trinity Trails in Fort Worth, River Legacy Trail in Arlington, Mike Lewis Trail in Grand Prairie, Campion Trail in Irving, and the Trinity Skyline Trail in Dallas.



As you will see in the upcoming tour, River Legacy Trail winds through a dense tree canopy where many bobcats have been sighted by parks personnel. My pictures did not see much wildlife (let alone bobcats) because of our Gator ATV; it was so loud that it reminded me of the Old Timey Car rides that were once popular at Six Flags long ago. Of course, Fort Worth is known for horned frogs, Grand Prairie has ospreys (sea hawks), Irving has herons, but what's up with dragonflies for Dallas? Maybe they wanted the alliteration....

Trail use/experience: peace and quiet, active recreation

Colors/Materials: natural, traditional, stone

Local Images/Elements: Trinity River, flora/fauna, bridges

Branding Approach: Welcoming, friendly, modern, natural

- At completion, 66-mile multi-use trail spanning five cities: Fort Worth, Arlington, Grand Prairie, Irving, and Dallas
- >50 miles existing, 12 miles under construction
- Majority of trail completion expected in 2024



A Hike and Bike Scenic Experience

The DFW Discovery Trail has great potential for natural and beautiful scenery throughout the various city parks situated within the Trinity River flood path. But as you will see, it will be a high bar to achieve considering the maintenance it will require for such a long trail.



Tour and Status

Click map to display online photo tour. Arlington has only about 8 miles of trail out of the 60-mile extent. It begins with the bridge crossing the Trinity River just east of Greenbelt, runs along the south side of the Trinity on the north side of River Legacy Park proper, crosses over to the north side of the Trinity just west of Hwy 157 Collins, runs south and east of the Veridian community, and ends at Hwy 360 just west of TRE Centreport Station. Tour comments: Delay in bridge construction on the westside connection with Fort Worth, trail relocation and drainage repair west of Collins, and trail maintenance on the eastside connection with Fort Worth. Trail gets a bit claustrophobic through the dense tree canopy, but beautiful vistas along the south and east Veridian portion of the Trinity River.

Trail Completion

- Most sections of trail anticipated to be complete in 2025. Full trail completion expected 2029-2030.
- Additional branding and wayfinding implementation strategies will be developed as trail moves toward completion

Wayfinding Signage Fabrication

- Developed design intent drawings to allow sign fabricators to develop an accurate bid for cities
- Cities can use to implement signage as trail segments are completed or upgraded

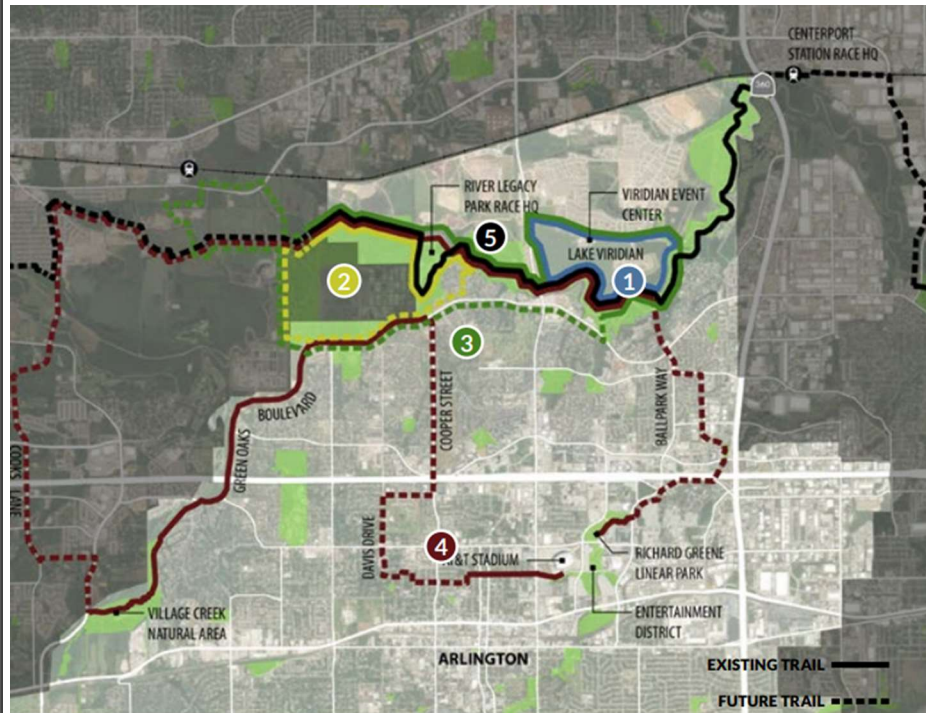
Trail M&O

- Exploring option of Trinity Coalition taking on role of umbrella organization



Still In
Progress

As you noticed from our picture tour, no DFW Discovery Trail signage has been implemented. Much of the trail is being rerouted due to erosion mitigation along the Trinity River. More emergency kiosks need to be added and the mileage markers will probably have to be moved. In addition to unpredictable storm damage like local flooding and downed trees, regular maintenance will occasionally necessitate closure of the trail. A cooperative like the proposed Trinity Coalition is definitely needed to display trail status to the public (as well as our maintenance crews) through a centralized website.

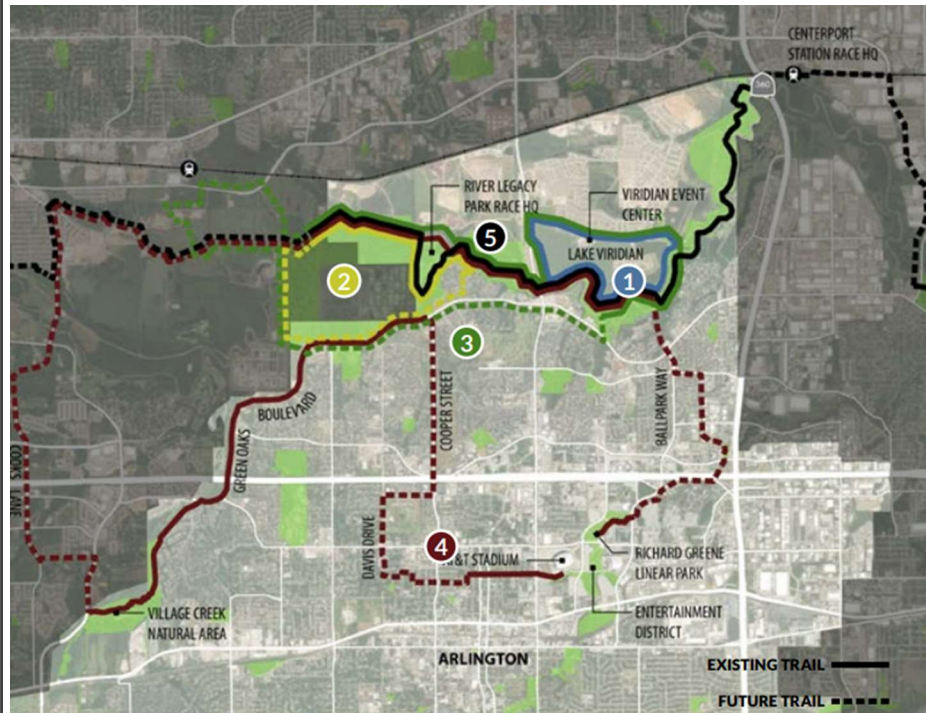


1 ARLINGTON 5K

This potential 5k route is 1 mile longer than a 5k but because it loops around Lake Viridian it's not possible to shorten unless the race start and finish are in two different locations. However, for a community race that does not need to be a specific length, it's a great route. Availability of parking, multiple options for race headquarter locations, and the beautiful segments of trail make this a great race location, including the ability for the Viridian community to participate without needing to park at the race headquarters.

Potential Run Events

Exciting potential routes for running races along the Trinity Trail. Lake Veridian 5K.

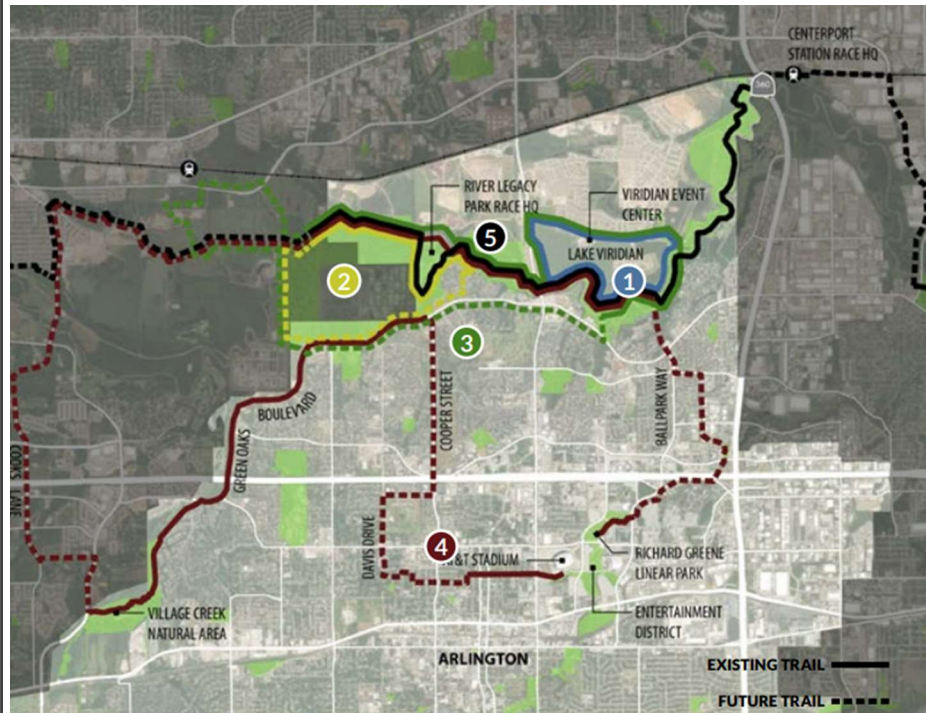


2 ARLINGTON 10K

This route through River Legacy utilizes surrounding roads and a neighborhood connection to complete a 10k. The neighborhood connection may need to be confirmed or may need access permission from neighbors. There's a lot of shade through the River Legacy Park and includes a loop inside the larger race loop to complete the length. A portion of this route also includes a planned segment of the DFW Discovery Trail. Parking arrangements currently being used by River Legacy races would need to be employed for this race event as well.

Potential Run Events

River Legacy 10K.



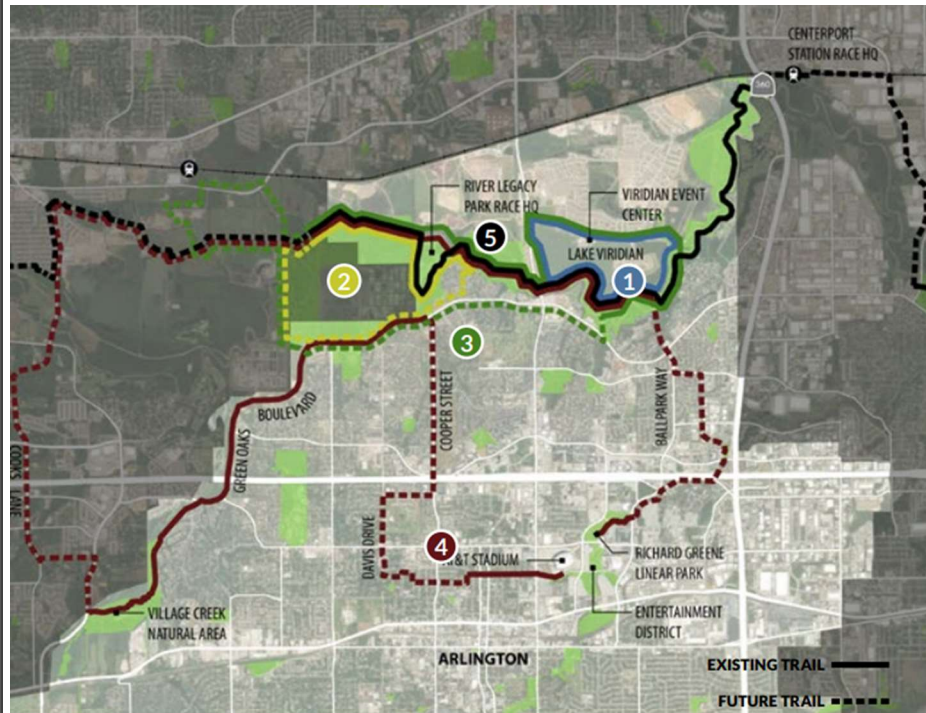
3 ARLINGTON HALF MARATHON

This potential ½ marathon route loops around Lake Viridian trail and through River Legacy trails with a western loop through neighborhoods and a slightly industrial area. It is 2 miles longer than a standard ½ marathon unless portions include a turnaround on the trail rather than a continuous loop. A portion of the route is also on a planned trail or sidewalk along a road.

This route is also convenient because it has a large parking option near Lake Viridian. However, it is commercial parking that has 425 spaces, and may be a slight inconvenience for the shopping center retail spaces.

Potential Run Events

North Arlington Half Marathon.

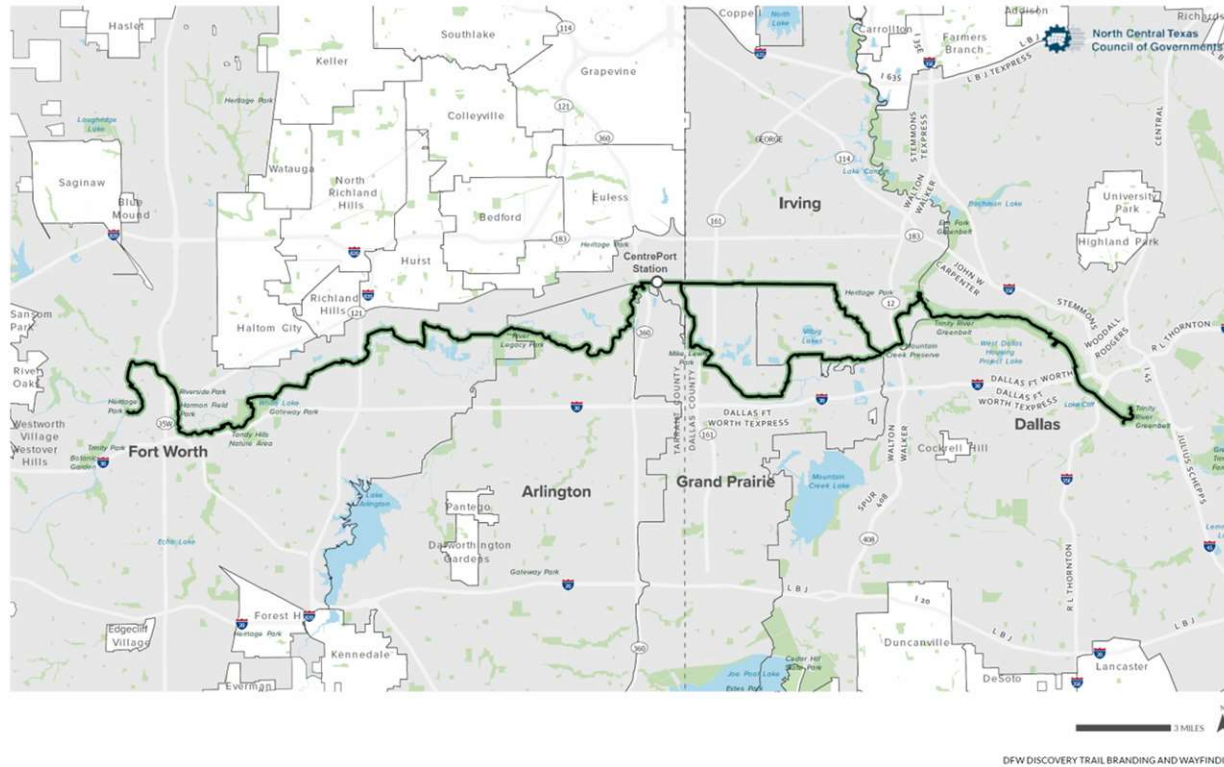


4 FORT WORTH/ARLINGTON NATIONAL MARATHON

Beginning and ending at the Entertainment District around AT&T Stadium, the race headquarters should enable all race participants to park on-site. The majority of this route is off-street, winding along Village Creek Trail, the DFW Discovery Trail through River Legacy Park, and the planned paths along Cooks Lane and along Ballpark Way and Brown Blvd. Two fairly short segments at the beginning of the route and end of the route must be on-street, but these high-capacity roads should easily accommodate one lane removal for the race route. The segment through the neighborhoods just west of AT&T Stadium zigs a little to create the exact length for the route. Ideally, the race begins through the neighborhood and ends at the Richard Greene Linear Park.

Potential Run Events

Cross Timbers Fort Worth-Arlington Marathon ending with a finish line inside AT&T Stadium.



Potential Run Events



Kevin Kokes, AICP
Land Use Mobility Program Manager
North Central Texas Council of Governments
kkokes@nctcog.org



Karla Windsor, AICP
Senior Program Manager
North Central Texas Council of Governments
kwindsor@nctcog.org

What?! You
want to
know more?!

Please contact NCTCOG for more information on the overall effort for the DFW Discovery Trail.



- **Victor Gutzler**
- Asset System Analyst
- 817.459.5492
- victor.gutzler@arlingtontx.gov
- Arlington Parks and Recreation
717 W. Main St. | Arlington, TX 76013
- naturallyfun.org • arlingtongolf.com

I hope this sparked
your interest.
Thank You.