

Trinity Metro Overview

Phil Dupler
Director of Planning

Vani Chitiprolu
Transit/GIS Data Coordinator



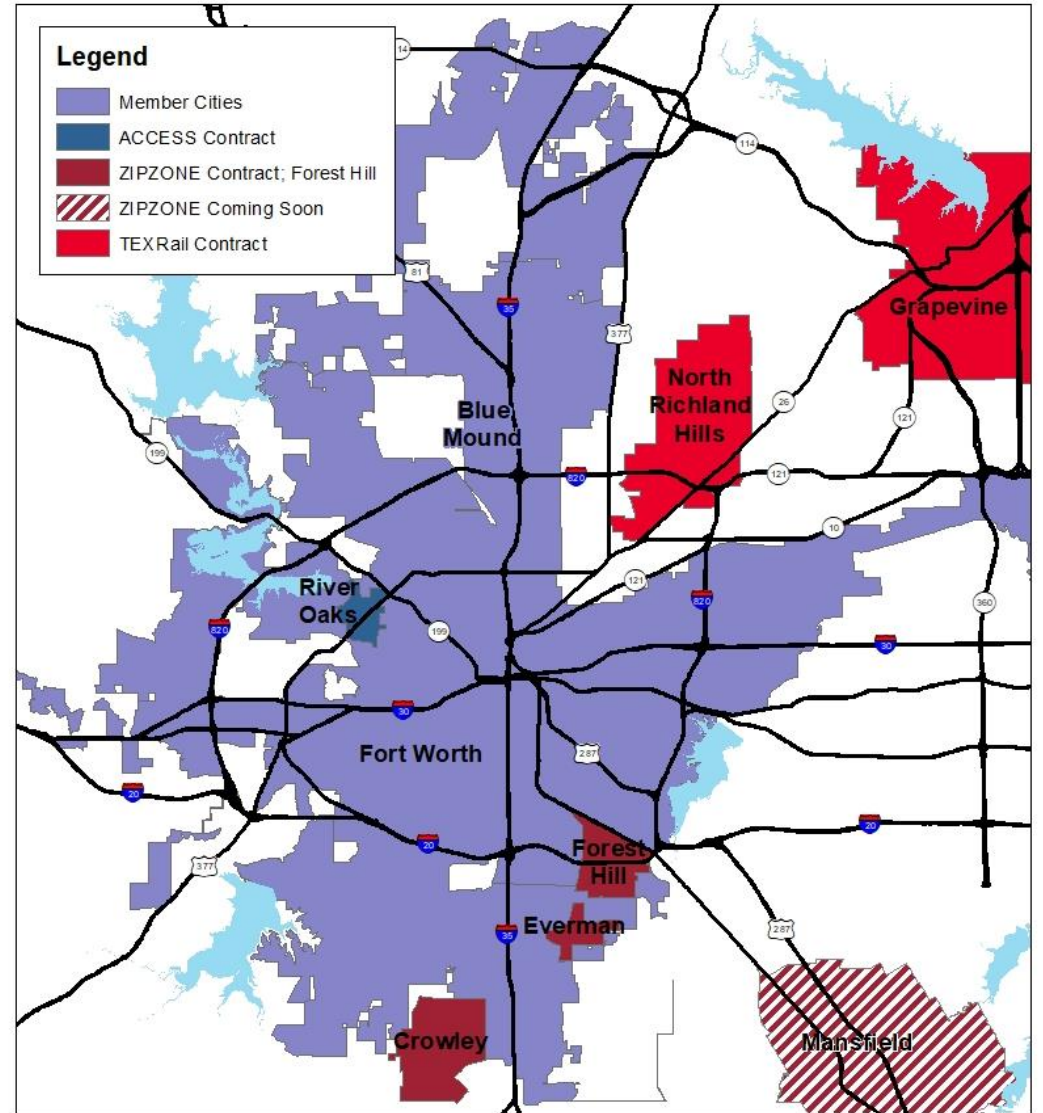
Trinity Metro Overview

Fort Worth Area Public Transit

Serving the cities of Fort Worth, Forest Hill, Blue Mound, River Oaks, Everman and Crowley¹

Rail Stations only in North Richland Hills and Grapevine²

1. Fort Worth and Blue Mound are full member cities. Forest Hill, River Oaks, Everman and Crowley served under contract.
2. Grapevine has limited shuttle bus service primarily serving tourists & visitors but not operated by Trinity Metro



Trinity Metro Overview

Seven Modes of Service

Fixed Route Bus Service –

142 buses on 37 routes serving
~13,973 trips/day



Trinity Metro Overview

Seven Modes of Service

Trinity Railway Express (TRE) –
9 locomotives and 26 cars
serving ~4,569 trips/day



Trinity Metro Overview

Seven Modes of Service

TEXRail - 8 TEXRail Diesel
Multiple Units (DMUs) serving
~2,048 trips/day



Trinity Metro Overview

Seven Modes of Service

ACCESS - 38 paratransit vans and 50 contractor vehicles serving ~1,139 trips/day



Trinity Metro Overview

Seven Modes of Service

Vanpool - 101 vans serving
~1,430 trips/day



Trinity Metro Overview

Seven Modes of Service

ZIPZONE – 31 minivans
serving 1,158 trips/day



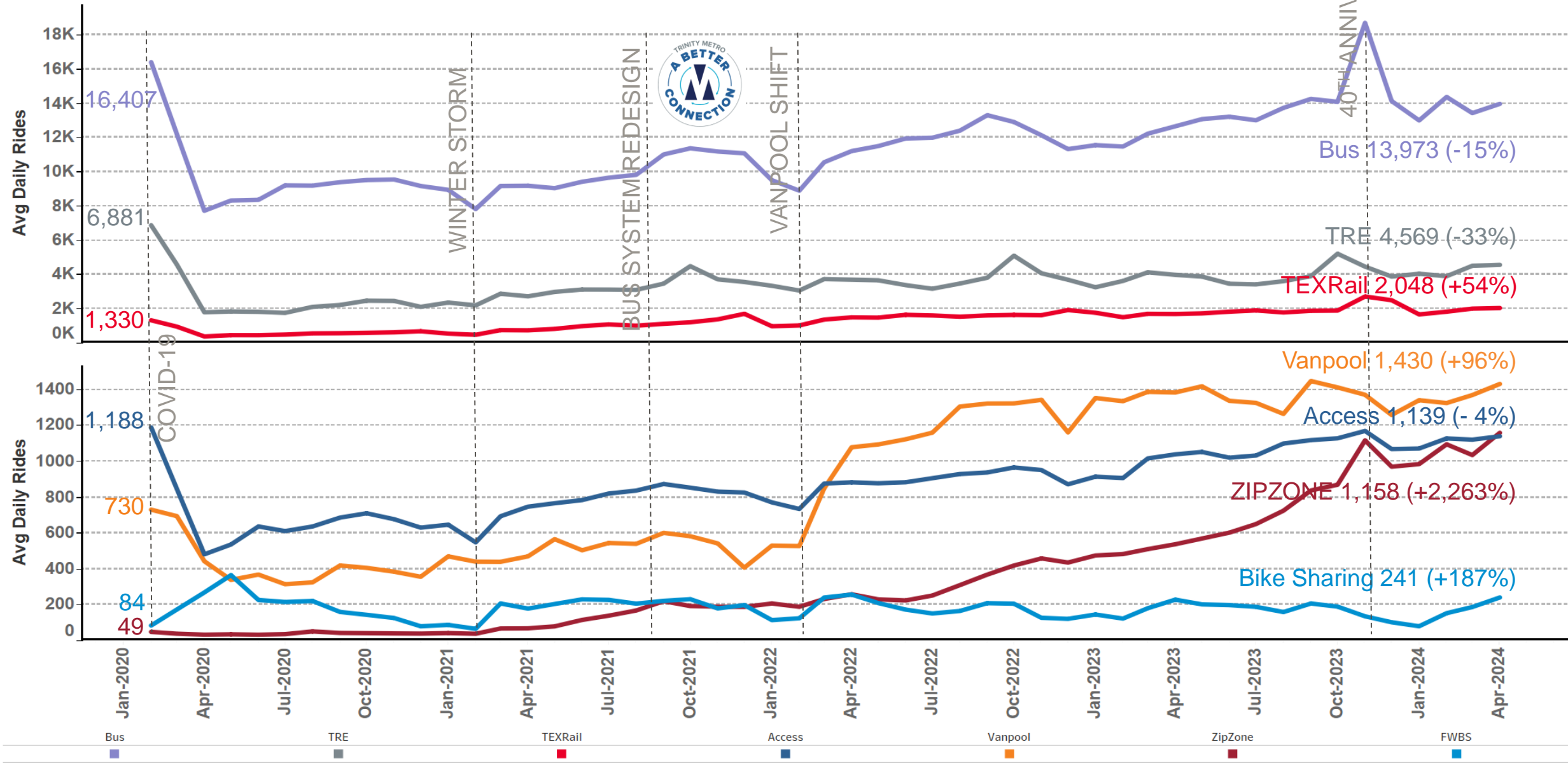
Trinity Metro Overview

Seven Modes of Service

Fort Worth Bike Sharing – 370 bicycles and 62 stations serving ~241 trips/day



Ridership by Mode



Planning Department

- Service Planning
 - New Routes/Changes to Existing Routes
 - Schedule/Timing Adjustments
- Infrastructure Planning
 - Add new Bus Stops/Remove old Bus Stops
 - Add/remove Benches, Shelters, Lighting, Signage, etc.
 - Concrete Pads, Sidewalks, Ramps, Accessibility
- Federal/State/Local Coordination
 - National Transit Database/Ridership
 - FTA Rules Compliance
 - City Traffic Control, Signals, Detours, Etc.
- Data Analysis (Big Data) & GIS

Public Meetings



Mobile Survey Bus



Big Data Connectivity



What is GTFS?

Where to find GTFS data for you region?

<https://www.transit.dot.gov/funding/grant-programs/capital-investments/stops-general-transit-feed-specification-gtfs-data>

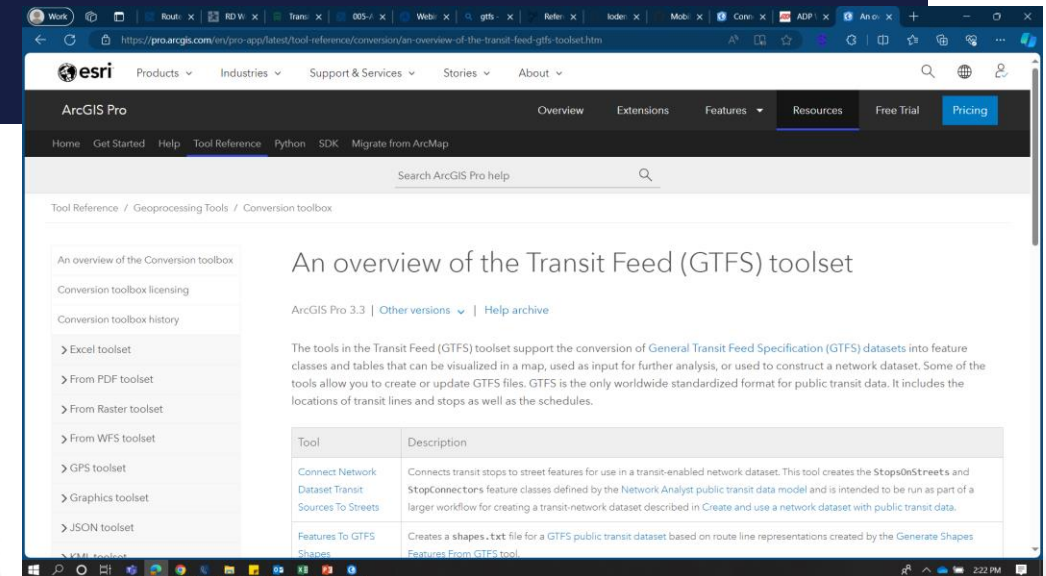
<https://gtfs.org/>

<https://gtfs.org/schedule/reference/>



Importing the static GTFS data into a feature dataset.





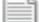

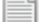




<https://pro.arcgis.com/en/pro-app/latest/tool-reference/conversion/an-overview-of-the-transit-feed-gtfs-toolset.htm>



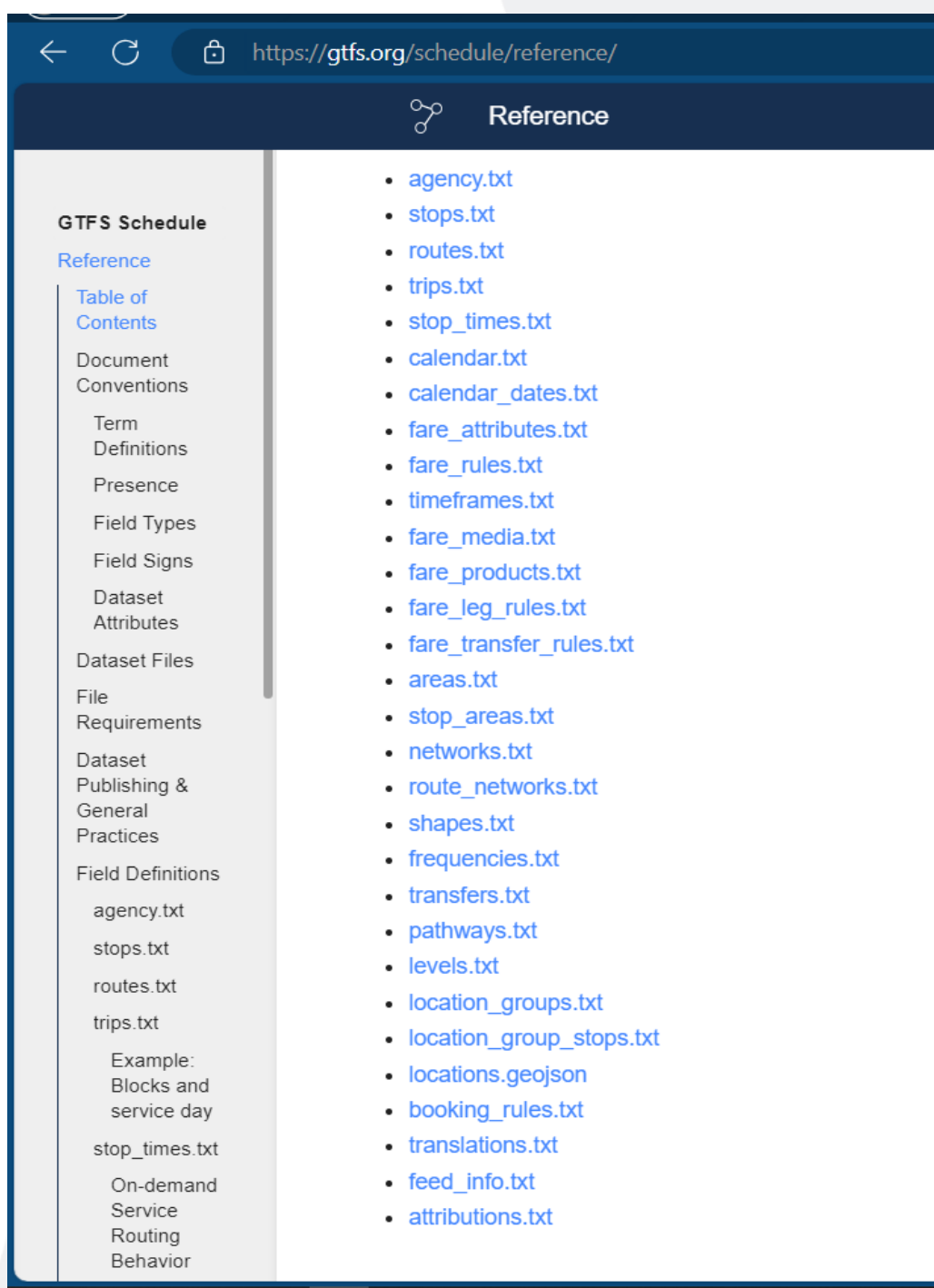
The screenshot shows the ArcGIS Pro help page for the Transit Feed (GTFS) toolset. The page title is "An overview of the Transit Feed (GTFS) toolset". The page content includes a table with two columns: "Tool" and "Description".

Tool	Description
Connect Network Dataset Transit Sources To Streets	Connects transit stops to street features for use in a transit-enabled network dataset. This tool creates the <code>StopsOnStreets</code> and <code>StopConnectors</code> feature classes defined by the Network Analyst public transit data model and is intended to be run as part of a larger workflow for creating a transit-network dataset described in Create and use a network dataset with public transit data.
Features To GTFS Shapes	Creates a <code>shapes.txt</code> file for a GTFS public transit dataset based on route line representations created by the Generate Shapes From GTFS tool.

Sample GTFS dataset

Name	Date modified	Type
 agency.txt	4/5/2024 11:53 AM	Text Document
 calendar.txt	3/26/2024 3:32 PM	Text Document
 calendar_dates.txt	4/5/2024 11:34 AM	Text Document
 DIRECTIONS.txt	4/2/2024 11:58 AM	Text Document
 feed_info.txt	4/5/2024 11:35 AM	Text Document
 routes.txt	4/5/2024 4:08 PM	Text Document
 shapes.txt	4/5/2024 11:53 AM	Text Document
 stop_times.txt	5/3/2024 2:09 PM	Text Document
 stops.txt	4/5/2024 12:08 PM	Text Document
 transfers.txt	2/13/2024 5:40 PM	Text Document
 trips.txt	4/29/2024 10:26 AM	Text Document

List of files that can be included in a static GTFS feed



The screenshot shows a web browser at the URL <https://gtfs.org/schedule/reference/>. The page title is "Reference". On the left side, there is a navigation menu under the heading "GTFS Schedule". The "Reference" section is expanded, showing a "Table of Contents" with the following items: Document Conventions, Term Definitions, Presence, Field Types, Field Signs, Dataset Attributes, Dataset Files, File Requirements, Dataset Publishing & General Practices, and Field Definitions. The "Field Definitions" section is further expanded to show a list of files: agency.txt, stops.txt, routes.txt, trips.txt, Example: Blocks and service day, stop_times.txt, On-demand Service Routing Behavior, agency.txt, stops.txt, routes.txt, trips.txt, stop_times.txt, and attributions.txt. On the right side of the page, there is a list of files for a static GTFS feed, including: agency.txt, stops.txt, routes.txt, trips.txt, stop_times.txt, calendar.txt, calendar_dates.txt, fare_attributes.txt, fare_rules.txt, timeframes.txt, fare_media.txt, fare_products.txt, fare_leg_rules.txt, fare_transfer_rules.txt, areas.txt, stop_areas.txt, networks.txt, route_networks.txt, shapes.txt, frequencies.txt, transfers.txt, pathways.txt, levels.txt, location_groups.txt, location_group_stops.txt, locations.geojson, booking_rules.txt, translations.txt, feed_info.txt, and attributions.txt.

GTFS Schedule

Reference

Table of Contents

Document Conventions

Term Definitions

Presence

Field Types

Field Signs

Dataset Attributes

Dataset Files

File Requirements

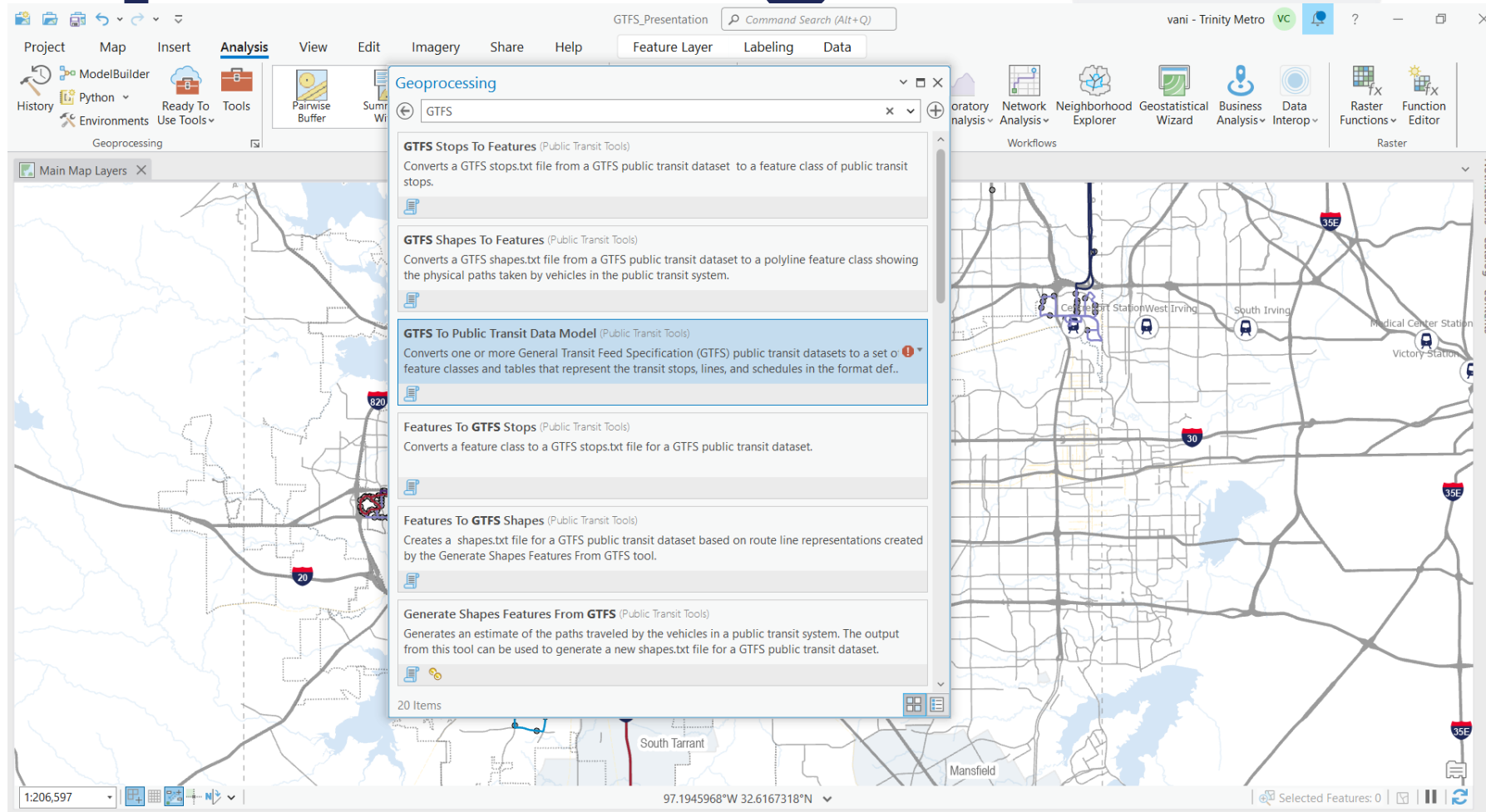
Dataset Publishing & General Practices

Field Definitions

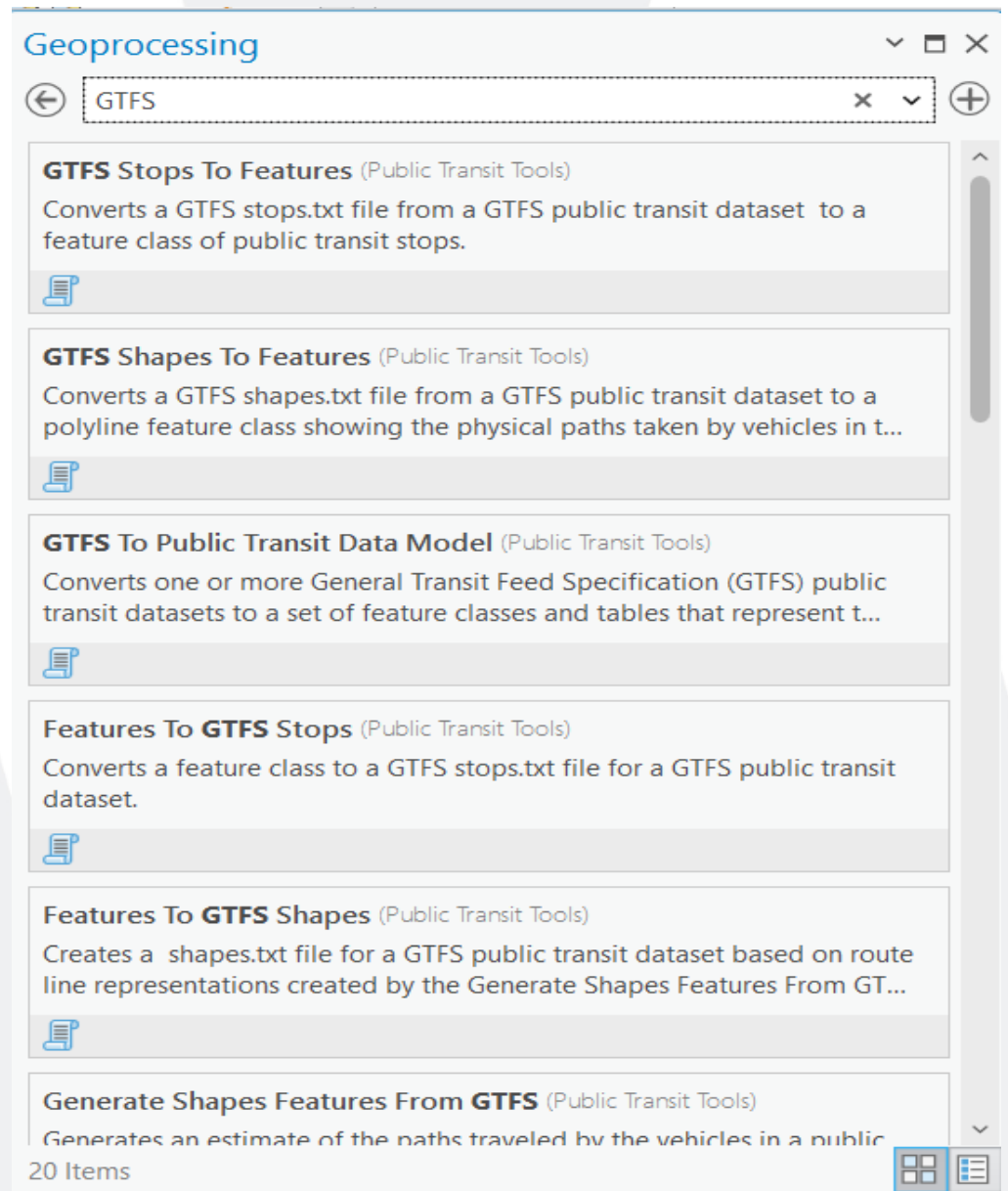
- agency.txt
- stops.txt
- routes.txt
- trips.txt
- Example: Blocks and service day
- stop_times.txt
- On-demand Service Routing Behavior

- agency.txt
- stops.txt
- routes.txt
- trips.txt
- stop_times.txt
- calendar.txt
- calendar_dates.txt
- fare_attributes.txt
- fare_rules.txt
- timeframes.txt
- fare_media.txt
- fare_products.txt
- fare_leg_rules.txt
- fare_transfer_rules.txt
- areas.txt
- stop_areas.txt
- networks.txt
- route_networks.txt
- shapes.txt
- frequencies.txt
- transfers.txt
- pathways.txt
- levels.txt
- location_groups.txt
- location_group_stops.txt
- locations.geojson
- booking_rules.txt
- translations.txt
- feed_info.txt
- attributions.txt

Geo-processing tools for GTFS



Geo processing tools for GTFS



GTFS_Presentation Command Search (Alt+Q) vani - Trinity Metro VC

Project Map Insert Analysis View Edit Imagery Share Help Feature Layer Labeling Data

History Python Ready To Use Tools Environments Use Tools

Geoprocessing Tools Portal Workflows Raster

Pairwise Buffer Summarize Within Spatial Join Pairwise Clip

Feature Analysis Raster Analysis Data Engineering Suitability Modeler Visibility Analysis Exploratory 3D Analysis Network Analysis Neighborhood Explorer Geostatistical Wizard Business Analysis Data Interop Raster Functions Function Editor

Main Map Layers

Smithfield Station Iron Horse Station Mercantile Mercantile Center Station Bell Station Trinity Lakes Station Side Station Texas Pacific Station Central Station West Irving South Irving Medical Center Station Victory Station Southside Southeast South Tarrant Mansfield

1:206,597 97.2850325°W 32.6827244°N Selected Features: 0

Trinity Metro Overview

Phil Dupler

Director of Planning

phil.dupler@ridetm.org

817-215-8701

