

North Central Texas  
Council of Governments

# Project Update Meeting

Breakout Station 3: Stakeholder Engagement  
September 2024



Funded by the Texas General Land Office,  
Community Development Block Grant,  
Disaster Recovery Program.



Also Funded by the Texas Water Development Board  
and Texas Department of Transportation.

# FEMA Equitable Stakeholder Engagement

# FEMA Equity-Based Outreach Grant

- \$100,000
- Supports outreach in both West and North study areas
- FEMA definition: Fair, just, impartial treatment
  - Communities of color
  - Members of LGBTQ+ community
  - Persons with disabilities
  - Persons who may face discrimination based on religion, national origin, and persons with Limited English Proficiency
  - Persons living in rural areas

## Stakeholder Engagement Plan

1. Identifying Stakeholders

2. Prioritizing Local Governments for Outreach

3. Preparing for Outreach to Local Governments

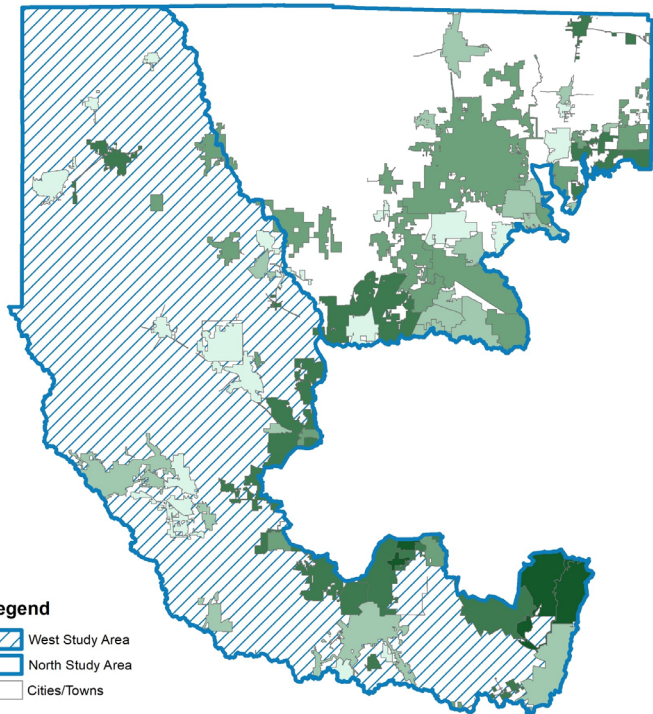
4. Following Up After Outreach to Local Governments

5. Addressing Equity

6. Reaching Rural and Agricultural Audiences

7. Reaching Business Audiences

### Communities of Color



- Legend**
- West Study Area
  - North Study Area
  - Cities/Towns
- Communities of Color**
- 7.16% - 17.36%
  - 17.37% - 29.10%
  - 29.11% - 42.77%
  - 42.78% - 62.44%
  - 62.45% - 93.11%

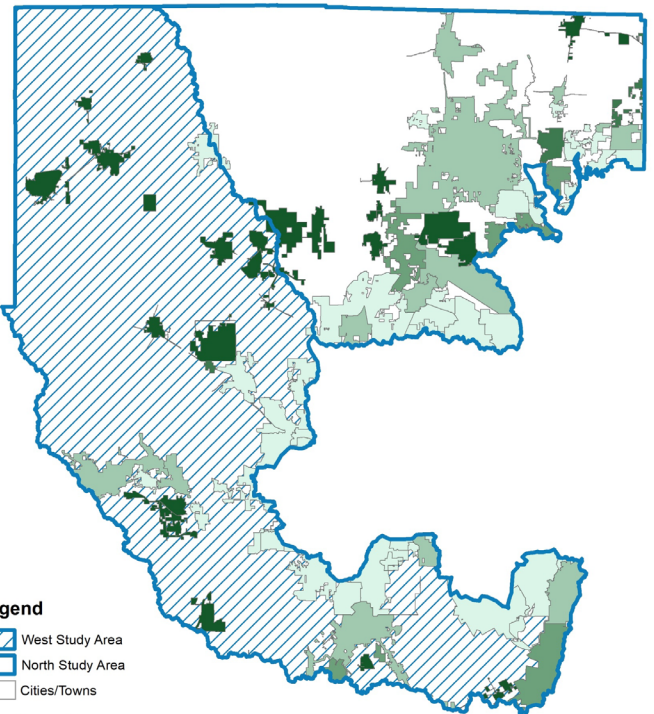
Data is from the American Community Survey 5-Year Estimates, 2017-2021, Table B03002. Communities of color are individuals who identify themselves as Hispanic or Latino and/or any race other than white.

0 5 10 20 Miles

N

North Central Texas Council of Governments  
January 23, 2024

### Rural Households



- Legend**
- West Study Area
  - North Study Area
  - Cities/Towns
- Rural Households**
- 0.00% - 1.58%
  - 1.59% - 6.21%
  - 6.22% - 17.30%
  - 17.31% - 59.63%
  - 59.64% - 100%

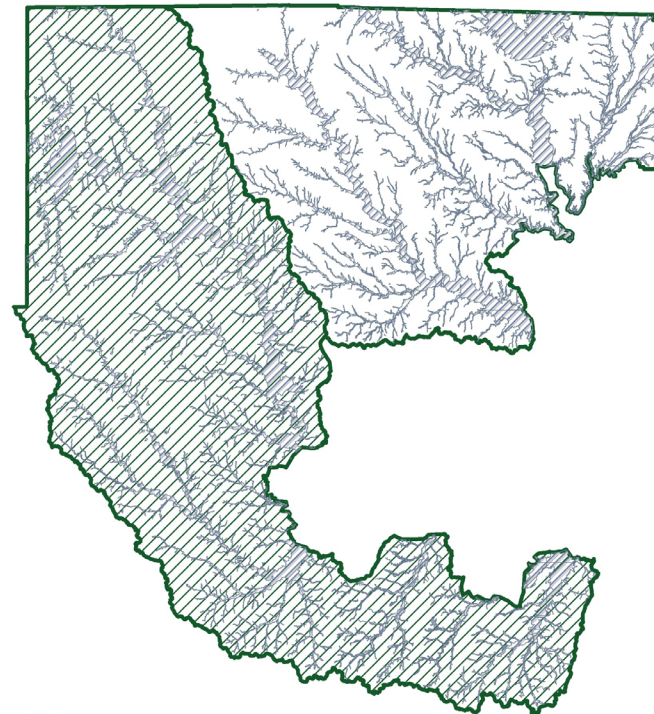
Data is from the 2020 Decennial Census, Table H2. Rural encompasses all households not included in an urban area. Urban areas were defined in 2020 as those with Census blocks of at least 2,000 housing units or with a population of at least 5,000.

0 5 10 20 Miles

N

North Central Texas Council of Governments  
January 23, 2024

### FEMA Special Flood Hazard Area



- Legend**
- West Study Area
  - North Study Area
  - FEMA Special Flood Hazard Area

Special Flood Hazard Area was downloaded from FEMA's Flood Map Service Center. This area is defined by FEMA as the area that will be inundated by the flood event having a 1-percent change of being equaled or exceeded in any given year.

0 5 10 20 Miles

N

North Central Texas Council of Governments  
January 24, 2024

# Equity Data by County - Percentages

County	Communities of Color <sup>1</sup>	Same-Sex Married or Unmarried Partners <sup>2</sup>	Persons with Disabilities <sup>3</sup>	National Origin Foreign Born <sup>4</sup>	Limited English Speaking Households <sup>5</sup>	Rural Housing Units <sup>6</sup>
Dallas	72.08	0.50	9.92	24.54	9.28	0.50
Denton	43.06	0.36	8.54	15.89	3.32	6.79
Ellis	42.05	0.19	11.59	7.80	2.61	29.99
Hood	16.98	0.22	12.50	3.07	1.12	38.76
Johnson	30.34	0.22	10.28	4.37	3.23	44.50
Parker	18.22	0.19	11.58	4.78	1.76	63.08
Tarrant	55.19	0.33	9.81	16.26	5.70	1.19
Wise	24.80	0.16	15.49	7.27	2.82	90.24

<sup>1</sup> American Community Survey 2017-2021 5-Year Estimates Table B03002

<sup>2</sup> Decennial Census 2020 Table DP1

<sup>3</sup> American Community Survey 2017-2021 5-Year Estimates Table B18101

<sup>4</sup> American Community Survey 2017-2021 5-Year Estimates Table DP02

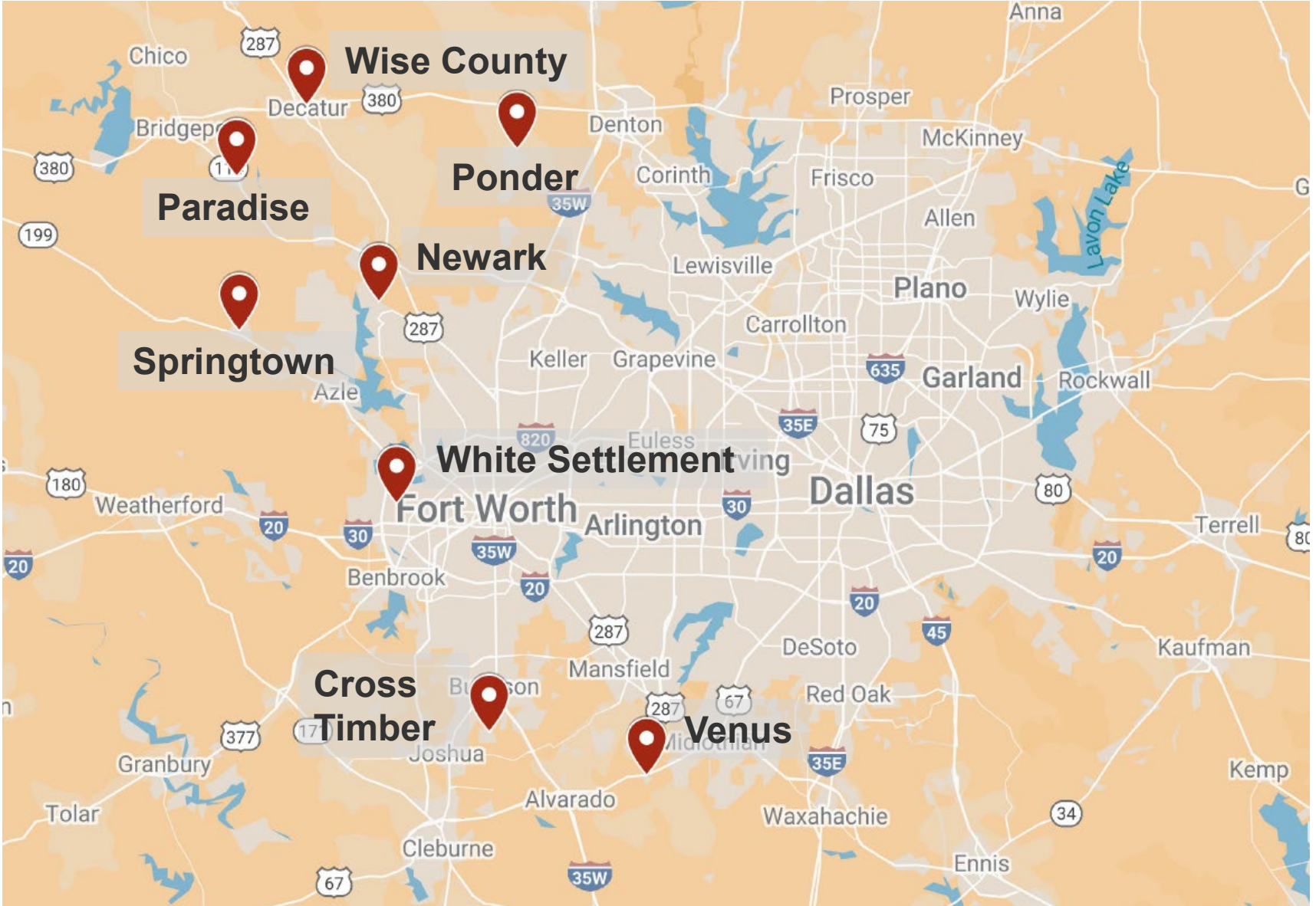
<sup>5</sup> American Community Survey 2017-2021 5-Year Estimates Table S1602

<sup>6</sup> Decennial Census 2020 Table H2

# Community Visit Takeaways

# Communities Visited

- Cross Timber
- Newark
- Paradise
- Ponder
- Springtown
- Venus
- White Settlement
- Wise County



# Common Themes from Community Visits

- Developer Relationships and Policy
  - What requirements does the city have for developers related to stormwater management?
  - Do you find it hard to enforce codes and regulations on developers?
- Growth Challenges and Opportunities
  - How is future growth being factored into flood management and infrastructure planning efforts?
  - How does flooding affect critical infrastructure in your community (roads, bridges, utilities)?
- Green Stormwater Infrastructure
  - Does the city support or encourage green stormwater infrastructure?
  - Have you considered green stormwater infrastructure as a solution for water supply?





# Common Themes from Community Visits

## Quotes

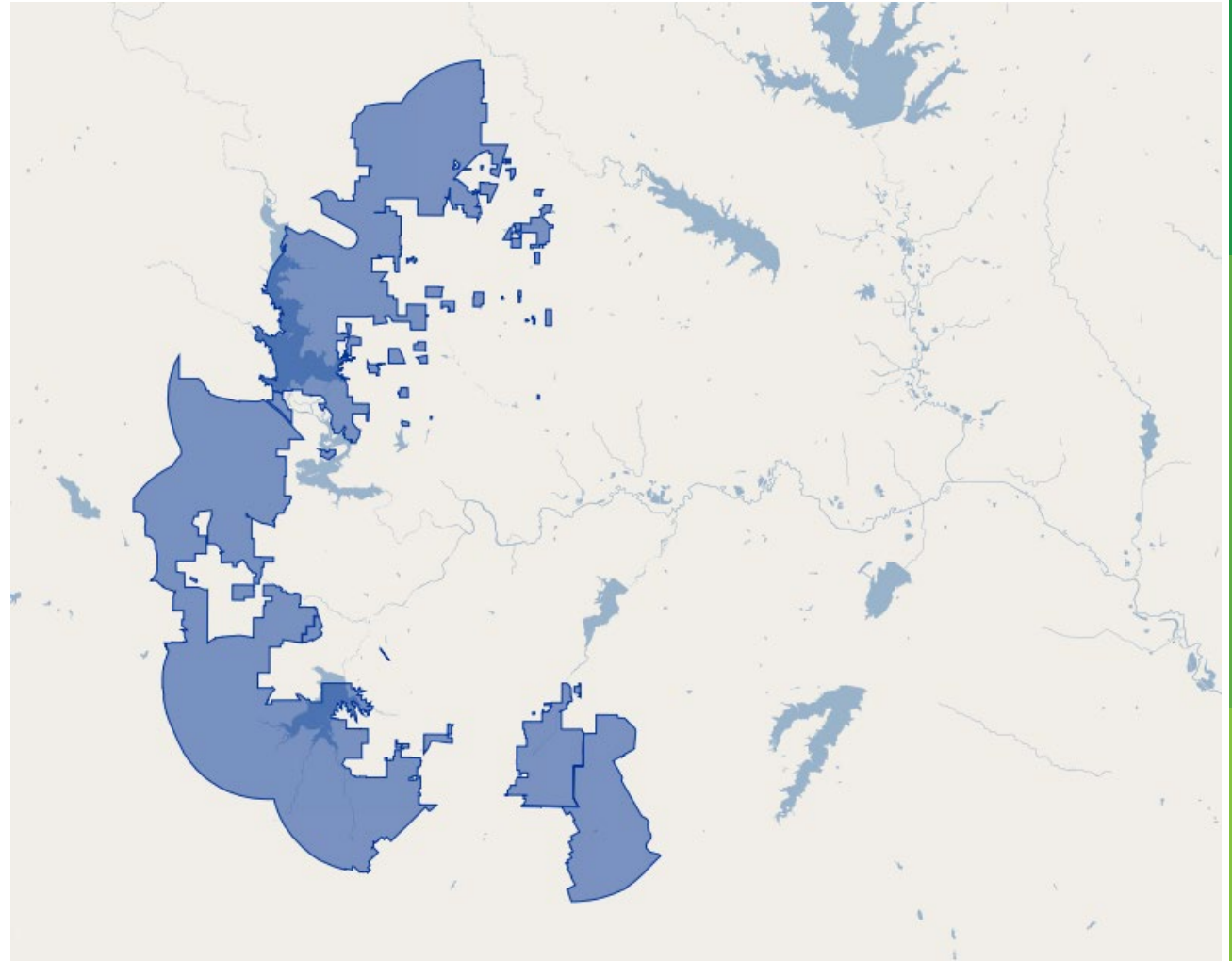
- “The amount of flow is only going to increase. It's not going to decrease.”
- “Hindsight is 20/20.”
- “Planning is important.”



# S.B. 2038: ETJ Bill

Texas Senate Bill 2038 allows property owners to remove their land from a city's extraterritorial jurisdiction (ETJ).

Property owners can submit a letter with their deed to remove themselves from an ETJ. Residents can also request an election by submitting a petition with the signatures of at least 5% of the registered voters in the area. If a majority of qualified voters approve the release, the city must release the area.



# H.B. 3699: Shot Clock Bill

The "shot clock" is a set of statutory timelines in Texas's Local Government Code that requires municipalities to act on plan or plat submissions within a certain amount of time. The shot clock applies to plats, but not site plans or subdivision construction plans.

The shot clock requires municipalities to:

- Approve, approve with conditions, or disapprove a plan or plat within 30 days of the plan or plat being filed
- Automatically approve applications if they are not processed properly under 30 days
- Extend the 30-day processing period in 30-day increments if requested by the applicant or if a takings impact analysis is triggered



# Green Stormwater Infrastructure

TSI will produce:

Menu of potential GSI and NBS mitigation strategies

Ideal locations for GSI and NBS

Return-on-investment analysis

Benefits:

- Reduces and treats stormwater at its source
- Slows and reduces stormwater discharges
- Recharges groundwater



Above: Bioretention in a parking lot; Below: Bioretention Cell (Credit: Texas A&M AgriLife)



# Developer Stakeholder Engagement

# Engagement Roadmap

1. Stakeholder Identification/Outreach
  1. Identification of “Development Community”
  2. Options for Communication/Collaboration
2. Stakeholder Concerns/Obstacles
  1. Preliminary Survey
  2. Perceptions
  3. Communication/Education
  4. Uncertainties (Cost, Timeline, Liabilities)
3. Strategies to Meet Obstacles
  1. Education
  2. Simplification/Tools
  3. Incentivization
  4. Limit Liability
5. Roadmap for Continued Engagement
  1. Share Survey Results
  2. Provide Resources to TSI



# Next Steps

Utilize contact information provided by mTAP participants to expand outreach and launch developer advisory committee.

During local government outreach, ask about knowledge of, support for green stormwater infrastructure and low impact development.

Evaluate interest in legislative agenda from Trinity River COMMON VISION Steering Committee to promote legislation that supports flood mitigation.

Address concerns about “just another planning study” – plan for continuing engagement.

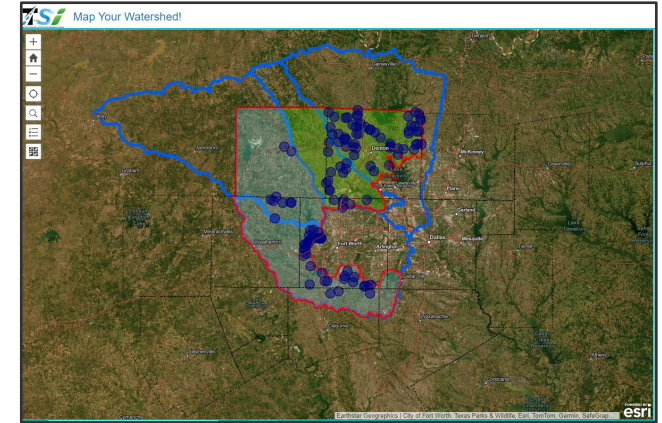


# How You Can Help!



# Community Input With: Map Your Watershed!

Map Your Watershed! allows users to identify infrastructure and environmental features that face frequent flooding or whose presence could mitigate flooding. These features could include roads that are covered with water during heavy rain; green infrastructure, such as detention ponds that retain stormwater; or open space planned for enhancement, such as recreation trails. Please identify any other features you believe are relevant to the Integrated Transportation and Stormwater Infrastructure Initiative.



# Technical Advisory Group

The Technical Advisory Group provides input to the TSI Project team regarding policy, outreach, data, and challenges that communities face. The goals of the advisory group are as follows:

- Use technical and local knowledge to provide policy guidance
- Provide technical input to identify gaps in planning
- Give feedback on data and modeling needs for the study area
- Provide guidance that helps project team produce products
- Act as a link between project team and community leadership
- Support and represent the interests of stakeholders
- Collaborate with TSI project to support shared goals
- Provide advice on overall approach best practices

**Next Meeting**  
Monday, October 25, 2024  
10:30 AM – 12:00 PM  
Microsoft Teams

# Contact



Sue Alvarez, PE, CFM  
Director, Environment & Development  
NCTCOG  
817-704-2549  
salvarez@nctcog.org



Matt Lepinski, PE  
Lead Hydraulic Engineer, Water  
Resources Branch  
US Army Corps of Engineers  
817-886-1683  
Matthew.T.Lepinski@usace.army.mil



Jai-W Hayes-Jackson, CFM  
Planner, Environment & Development  
NCTCOG  
817-695-9212  
jhayes-Jackson@nctcog.org



Jeff Neal, PTP  
Senior Program Manager, Transportation  
NCTCOG  
817-608-2345  
jneal@nctcog.org



Kate Zielke, CFM  
Program Supervisor, Environment &  
Development  
NCTCOG  
817-695-9227  
kzielke@nctcog.org

