



# TMDL Avian Management Webinar & Roundtable

June 24, 2024

Joy Douglas, Environment and Development Planner

North Central Texas Council of Governments

# Webinar Procedures

- This webinar will be recorded and posted to the NCTCOG TMDL webpage under the green banner labeled “Workshops”
  - [www.nctcog.org/TMDL](http://www.nctcog.org/TMDL)
- All registrants and attendees will receive an email with the presentation slides and a subsequent email when the recording is posted.
- Please keep your microphone on mute until the Question-and-Answer period at the end of the presentations.
  - Questions can also be typed into the chat box.
- Thank you!

# What is the North Central Texas Council of Governments?

- Voluntary association of local governments
- Established in 1966
- Assists local governments in:
  - Planning for common needs
  - Cooperating for mutual benefit
  - Recognizing regional opportunities
  - Resolving regional problems
  - Making joint decisions



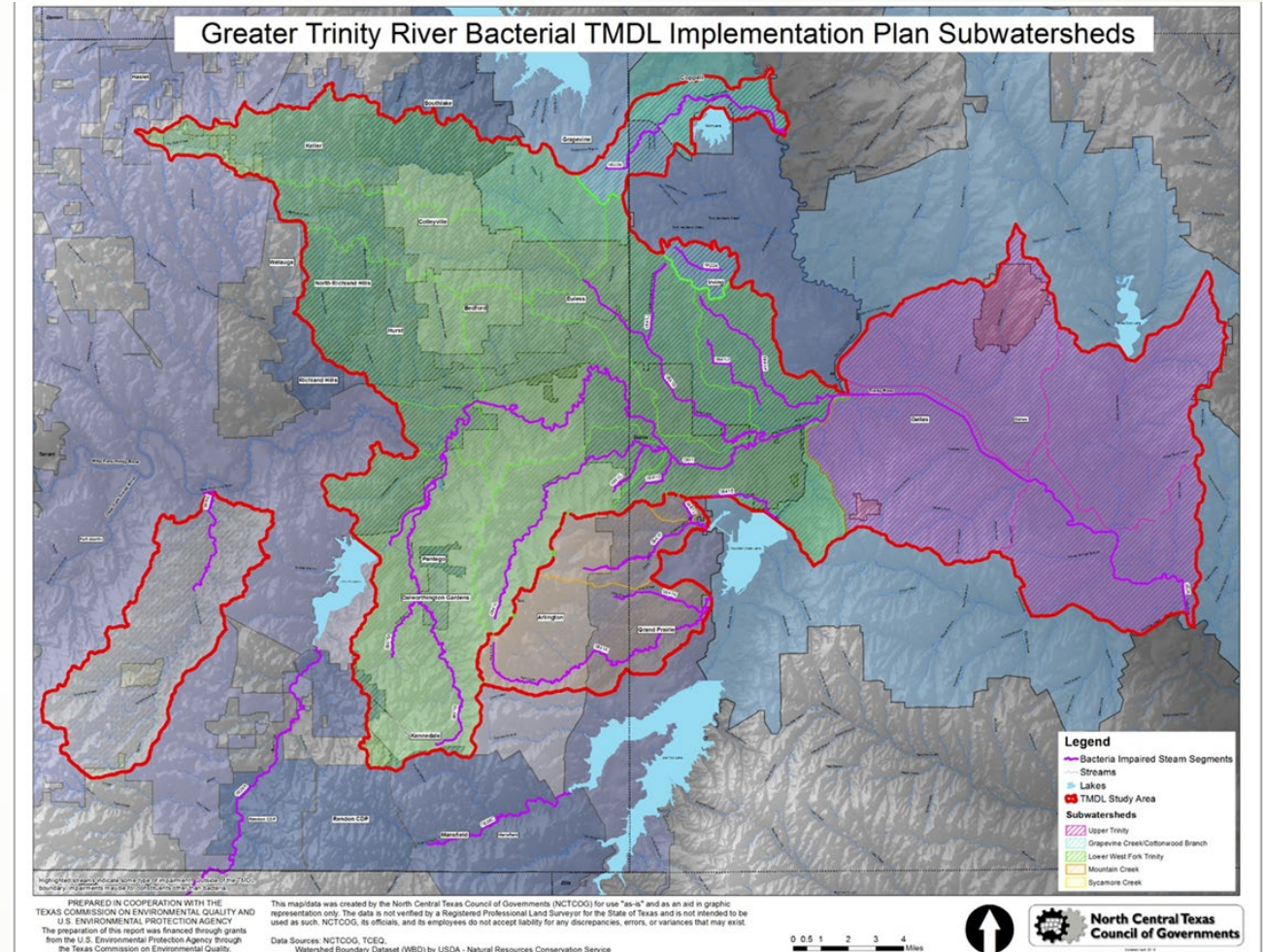
# Bacteria Impairments in the DFW Metroplex

- What does impairment mean?
  - A waterway is not meeting state water quality standards for its designated use.
- What could be causing the impairment?
  - Pet waste,
  - Sanitary sewer overflows,
  - Agricultural practices,
  - Wastewater treatment plants,
  - Illicit discharges,
  - Onsite sewage facilities (septic systems), and
  - Wildlife waste
- What is a total maximum daily load (TMDL)?
  - A budget for a pollutant that a waterway can receive and still safely maintain its designated use.



# Greater Trinity River Bacterial TMDL Implementation Plan Subwatersheds

- Upper Trinity River Segment 0805
- Elm Fork Tributaries of Grapevine Creek and Cottonwood Branch
- Lower West Fork Trinity River Segment 0841 and 12 of its tributaries
- Upstream of Mountain Creek Lake Segments 0841F, 0841K, 0841N, 0841P, 0841Q, and 0841V
- Sycamore Creek Segment 0806E



# How is NCTCOG working with local governments to address TMDLs?



Approved by the Commission: December 11, 2013  
Approved by the Coordination Committee: July 11, 2012  
Revised by the Coordination Committee: June 13, 2019

## Implementation Plan Twenty-Two Total Maximum Daily Loads for Bacteria in the Greater Trinity River Region

### Upper Trinity River

Segment 0805  
Assessment Units 0805\_03 and 0805\_04

### Cottonwood Branch and Grapevine Creek

Segments 0822A and 0822B  
Assessment Units 0822A\_02 and 0822B\_01

### Lower West Fork Trinity River

Segments 0841, 0841B, 0841C, 0841E, 0841G, 0841H, 0841J, 0841L, 0841M, 0841R, 0841T, and 0841U  
Assessment Units 0841\_01, 0841\_02, 0841B\_01, 0841C\_01, 0841E\_01, 0841G\_01, 0841H\_01, 0841J\_01, 0841L\_01, 0841M\_01, 0841R\_01, 0841T\_01, and 0841U\_01

### Mountain Creek Lake Tributaries

Segments 0841F, 0841K, 0841N, and 0841V  
Assessment Units 0841F\_01, 0841K\_01, 0841N\_01, and 0841V\_01

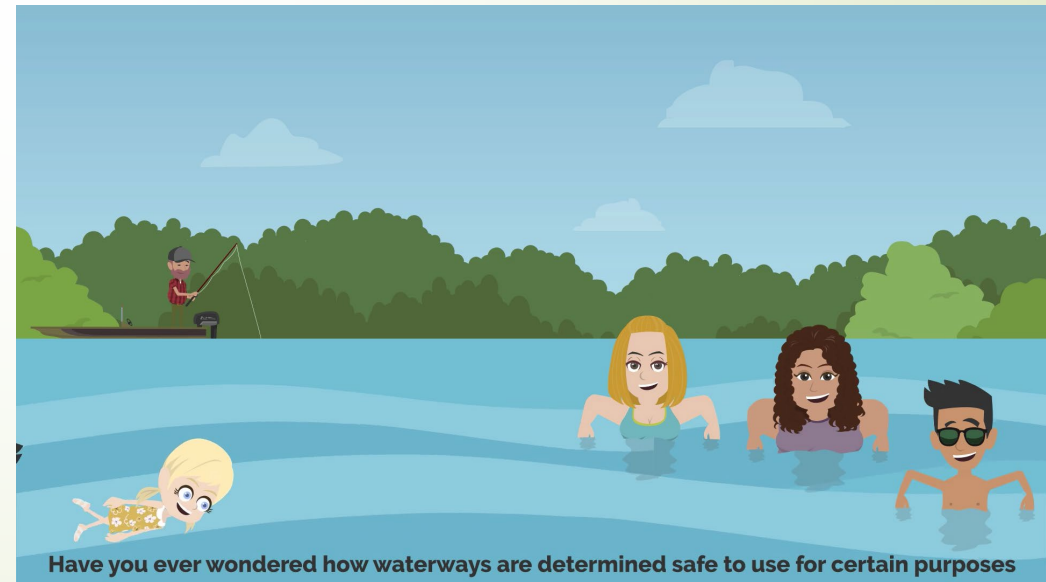
### Sycamore Creek

Segment 0806E  
Assessment Unit 0806E\_01

- Through the Implementation Plan, NCTCOG works with local governments to implement best management practices (BMPs) to reduce the sources of bacteria. The I-Plan includes BMPs for
  - Participation in regional initiatives,
  - Education and outreach,
  - Ordinance, guideline, or management plan adoption, and more!
- This Implementation Plan also guides the projects and workshops selected by the TMDL Coordination Committee.

## Available TMDL Resources

- [What is a TMDL? Tri-Fold Brochure](#)
- [What is a TMDL? Educational Explainer Video](#)
- [Don't Feed the Birds Explainer Video](#)
- Other Activities:
  - Quarterly Newsletters
  - BMP Library
  - Workshops and Webinars



Have you ever wondered how waterways are determined safe to use for certain purposes



# Managing Nuisance Rookeries and Negative Impacts of Feeding Waterfowl

Rachel Richter

Urban Wildlife Biologist

Texas Parks and Wildlife Department



# Managing Black Vulture Predation on Small Acreage & Resident Canada Geese Management

Adam Henry

Wildlife Assistant District Supervisor Biologist

US Department of Agriculture - Texas Wildlife Services Fort Worth District

# Roundtable

# Roundtable Questions

- What is one aspect of avian management that is challenging to convey in educational forums like this one?
- What is something you **wish more people** were aware of when it comes to avian management education?
- What are some key takeaways that you would impart upon viewers and attendees of this forum that they can implement in their day to day as well as educate others?
- Is there something **NCTCOG can provide** to you to bolster your TMDL activities or programs?
- What **topics are you most interested in learning more about** in future workshops or webinars?



Questions?

# What's Coming Up For NCTCOG Related To TMDL

- **TMDL Workshop “State of the Greater Trinity River Region I-Plan”** August 6<sup>th</sup> via Microsoft Teams

# Contact

## Joy Douglas

Environment and Development Planner

[jdouglas@nctcog.org](mailto:jdouglas@nctcog.org)

(817) 422-5876

## Casey Cannon

Environment and Development Planner II

[ccannon@nctcog.org](mailto:ccannon@nctcog.org)

(817) 608-2313

## Hannah Ordonez

Senior Environment and Development  
Planner

[hordonez@nctcog.org](mailto:hordonez@nctcog.org)

817-695-9215

# Connect



Facebook.com/nctcogenv



@nctcogenv



nctcogenv



youtube.com/user/nctcoged



EandD@nctcog.org



nctcog.org/envir