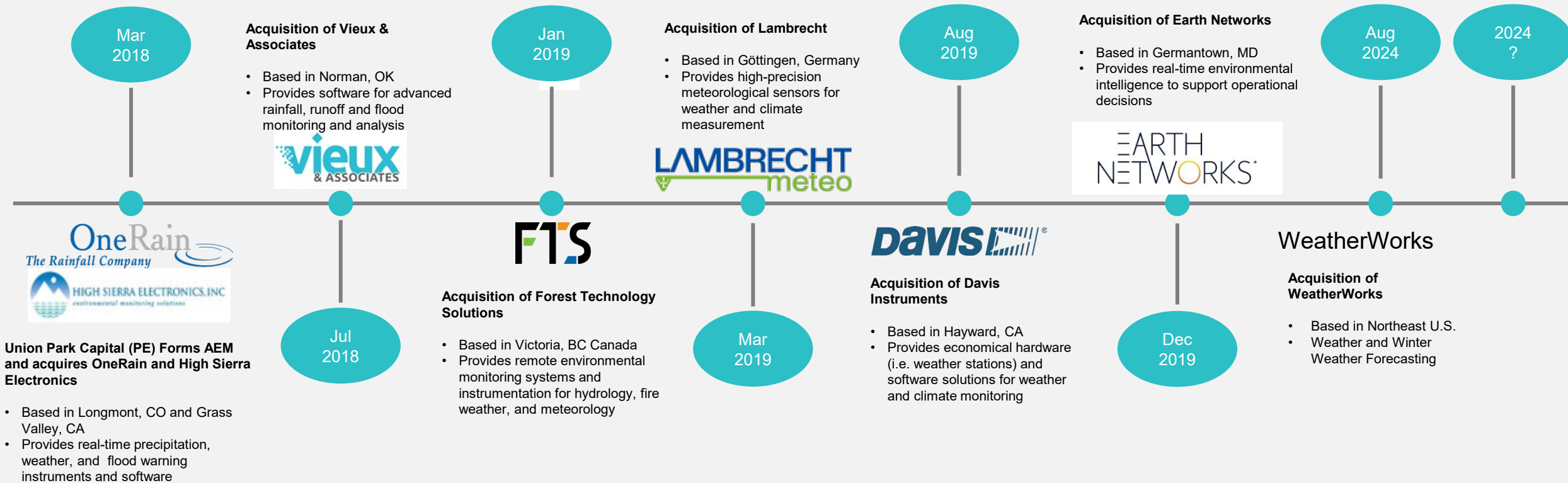


Capabilities Overview for Water and Large International Projects

AEM Introduction





• A Family of Established Innovators
 • Strong brands with long legacies from 26 to 160 years!
 • Nearly 400 highly experienced industry specialists

aem.eco

We support our customers' critical missions in...

Flood Warning

Dam Safety

Reservoir Operations

Flooded Roadways

Road Weather

Water Resources

Irrigation

Wastewater & Stormwater

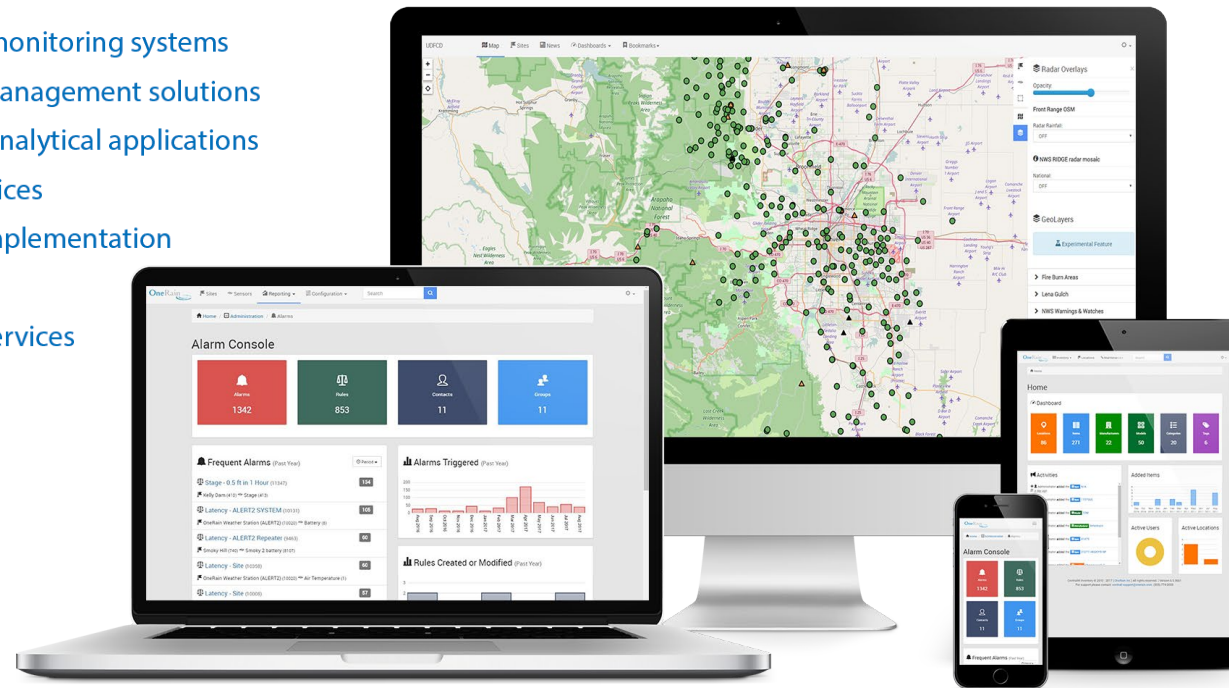
Wildfire

Severe Weather

How we do it...

Experts in measuring and understanding water

- End-to-end real-time hydrometeorological monitoring systems
- Contrail® 24/7-reliable data collection and management solutions
- StormData™ radar rainfall for real-time and analytical applications
- StormLink® telemetry systems and data services
- Complete hydrologic network design and implementation
- OneRainTech™ Field Services
- Best practices consulting and professional services



“We partner with our customers to deliver solutions that help them achieve their goals and mission success.”

Complete Network Design and Implementation



Flood Early Warning & Emergency Management



Dam Safety and Operations



GateOps™ for Reservoir Operations



- Decision support for Dam and Reservoir water inflow/outflow operations.

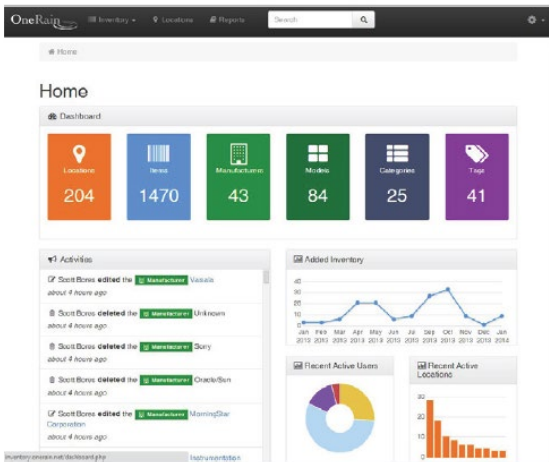
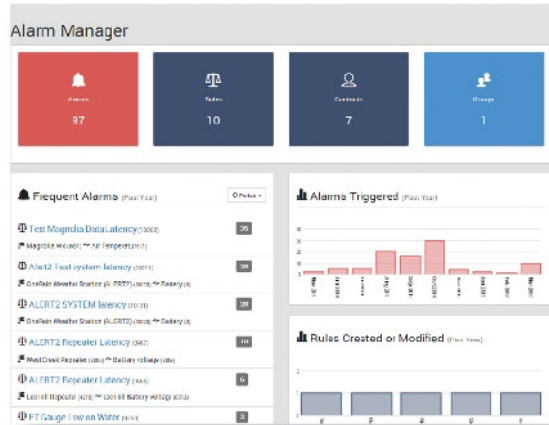
Urban and Flash Flooding



Stormwater & Wastewater Management



Elements 360[®]



Total Control of Your Hydrometeorological Network Data and Information Distribution

Contrail Base Station is the visualization tool of choice when managing and controlling access to your hydrologic data is critical. Contrail supports the real-time data collection, processing, archiving and dissemination of your hydrometeorological and water resources data in one place.

Alarm Management

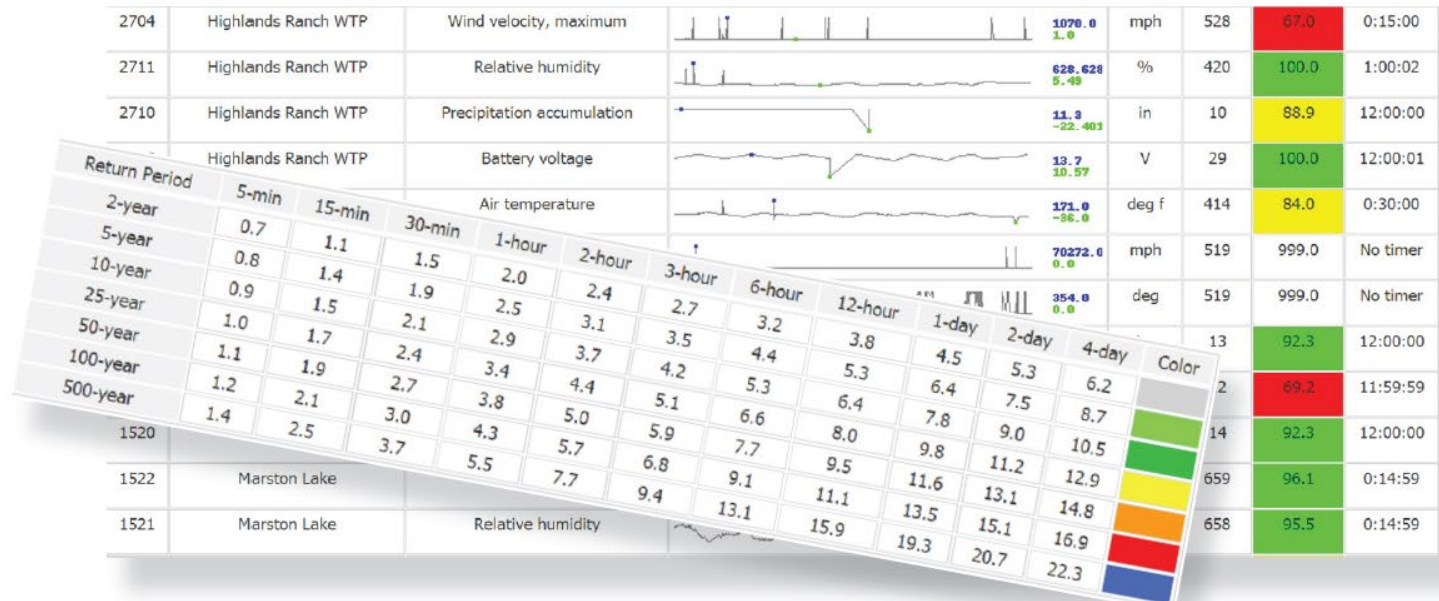
Build Custom Definable Alarms and Delivery Notifications
Create customized rules to trigger an alarm for any sensor or group of sensors within your software's data reach.



Rule		On
Rule Id	20	
Site	L-52 (25005)	
Sensor	Rain Increment (Inc)	
Auto Acknowledge	On	
Published	OneRain 4 months ago	
Equation	$\sum (\text{last_value}(1499,10) > 1)$	
Processor	Primary (1)	

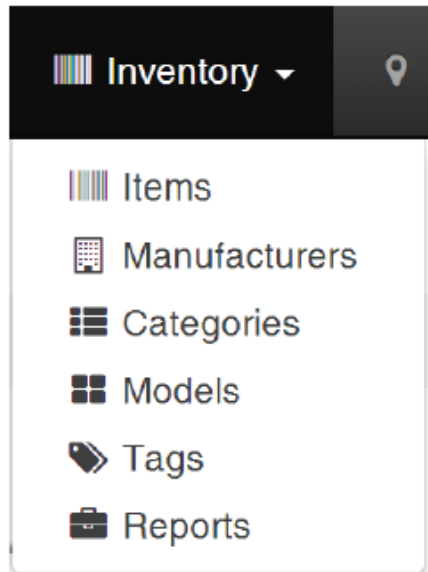
Elements 360 ® Analytics

Site	Sensor ID	5-min	15-min	30-min	1-hour	2-hour	3-hour	6-hour	12-hour	1-day	2-day	4-day
Houston Transtar	1000	0.2	0.3	0.4	0.6	1.0	1.2	1.5	1.7	1.9	1.9	2.7
D109 Harris Gully @ South McGregor Way	400	0.8	1.5	2.4	4.0	7.0	7.7	8.8	10.5	10.5	12.3	19.3
D100 Brays Bayou @ Lawndale Street	410	0.7	1.3	2.2	3.7	6.3	7.0	8.9	13.1	13.1	14.1	21.3
D100 Brays Bayou @ South Main Street	420	0.6	1.5	2.4	4.0	6.7	8.5	9.5	12.0	12.1	13.3	18.0
D100 Brays Bayou @ Stella Link Road	430	0.6	1.5	2.3	4.0	6.5	7.8	9.6	11.3	11.4	13.1	19.7



- Suite of flexible integrated data-analysis tools that extends the power of Contrail.

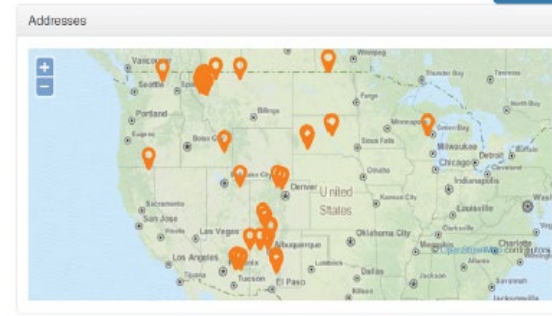
Elements 360® Inventory plus



 Models 90

 Locations 210

Model	Category	Model	Manufacturer
100M Bubbler Tubing	Bubbler		
10W Solar Panel	Solar Pa		
10W Solar Panel	Solar Pa		
12 V 35 amp hr deep cycle battery	Battery		
12v 18Ah AGM	Battery		
20:1 Voltage Divider	Telemetry	CVD20	Campbell Scientific, Inc.
20W Solar Panel	Solar Panel	SX 320 M	BP Solar



- Centralized Web-based asset tracking and maintenance management tool for real-time monitoring networks.

StormData™ Radar Rainfall and StormProperties™ Analysis



Real-time, future and historical radar data services.

Example: Radar Water Level Sensor Installations



Bridge Installation



Side of River Installation

Example: Rain Gauge and Weather Station



Rain Gauge



Weather Station

Example: Loggers



StormLink® Satellite Communications



- Reliable, robust, and stable
- Redundant data paths
- Secure global network
- 24 x 7 Web accessible
- Suitable for remote applications



Gauge Network Installation & Maintenance



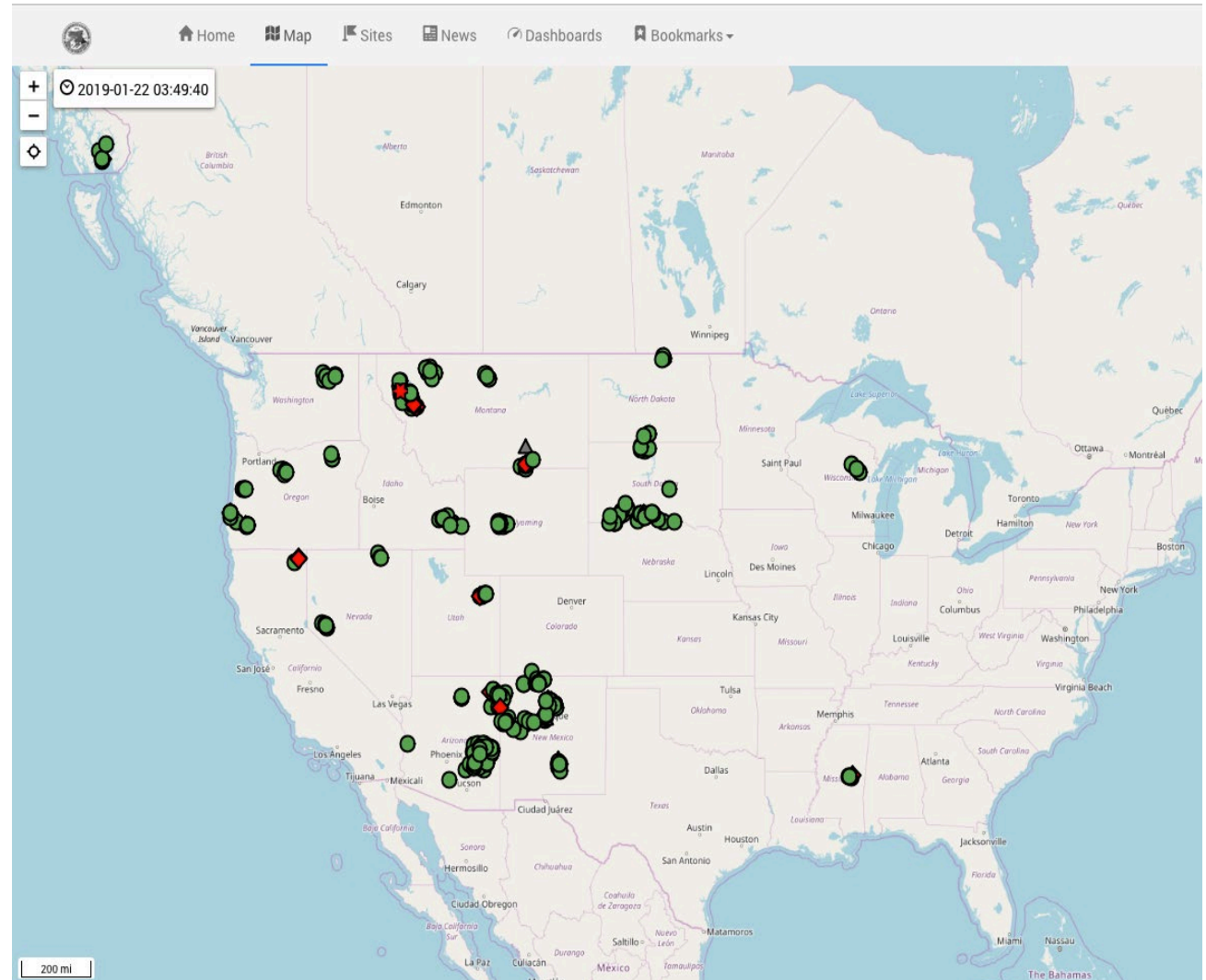
Maintenance services for real-time hydrologic data collection networks.

BIA Dam Safety Program

Department of the Interior



- **SCOPE**
 - 40 Sovereign Tribal Lands
 - 137 High Hazard Dams
 - Budget \$25M per year
 - Instrumentation/telemetry
 - Real-time (20-second latency) Satellite
 - Rainfall Events
 - Structural Integrity
 - Software
 - Data collection/monitoring
 - Alarming
 - National and tribal specific
 - National Monitoring Center
 - 7/24 Operations
 - Most dams do not have staff on site
 - Initiate Emergency Action Plans
 - Tribal local response



BIA Dam Safety Program

Instrumentation and Telemetry



- Types of Dam Instrumentation
 - Reservoir Level
 - Inflow
 - Gate Positions
 - Outflow
 - Structural and seismic
 - Piezometers
- Types of Telemetry
 - GOES (Meteosat)
 - Up to 1-hour latency
 - StormLink® (Inmarsat: L-band, real-time)
 - 20-second latency
 - ALERT/ALERT2™*
 - Real-time VHF-UHF radio

BIA Dam Safety Program

Contrail® Software

• National View

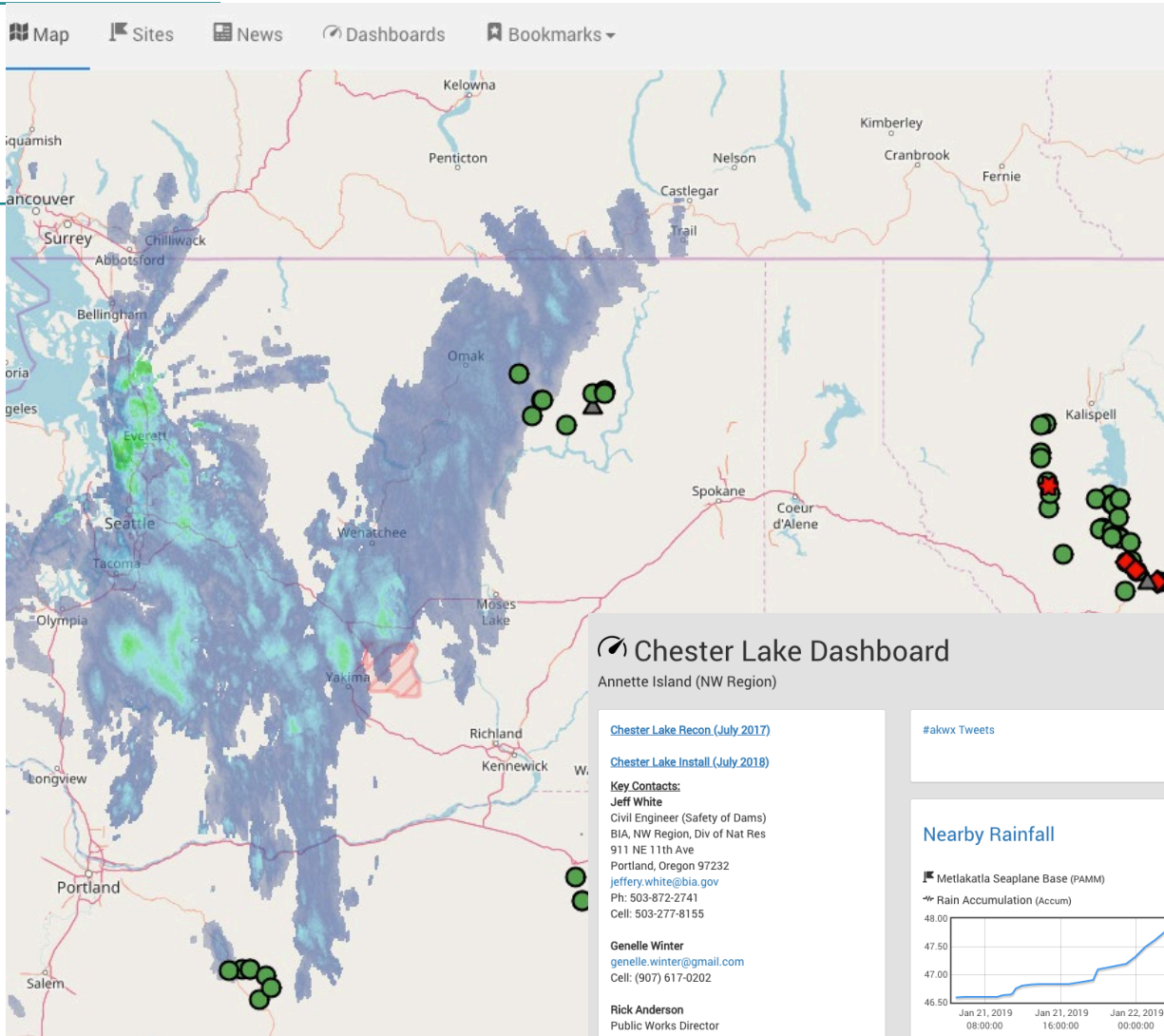
- Alarm Status
- Weather Radar
- GIS

• Tribal View

- Each tribe views their own dams
- GIS and Operational Dashboards

• Cloud Hosted

- Geographically redundant servers
- Responsive for desktop PC and mobile devices.



Chester Lake Dashboard

Annette Island (NW Region)

[Chester Lake Recon \(July 2017\)](#)

[Chester Lake Install \(July 2018\)](#)

Key Contacts:
Jeff White
Civil Engineer (Safety of Dams)
BIA, NW Region, Div of Nat Res
911 NE 11th Ave
Portland, Oregon 97232
jeffery.white@bia.gov
Ph: 503-872-2741
Cell: 503-277-8155

Genelle Winter
genelle.winter@gmail.com
Cell: (907) 617-0202

Rick Anderson
Public Works Director
mic_maint@aptalaska.net
Cell: (907) 617-4045 - AT&T

Floyd Russell
floydtrussellsmpl@gmail.com
Cell: (907) 821-3983 - AT&T

Gavin Hudson
Tribal Council
mr.gavinhudson@gmail.com

Albert Smith
libertya1978@gmail.com

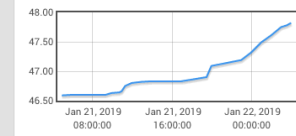
Weather Links:

#akwx Tweets

Nearby Rainfall

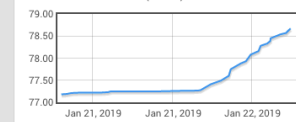
Metlakatla Seaplane Base (PAMM)

Rain Accumulation (Accum)



Annette Island Airport, AK (PANT)

Rain Accumulation (Accum)

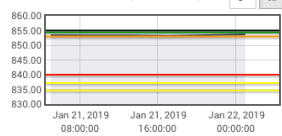


3
Active Alarms @ Chester Lake

Chester Lake Reservoir

Chester Lake Dam (2001)

Reservoir Elevation (SDXP113Slot1)



Chester Lake Dam (2001)

Rainfall Accumulation (Accum)



AEM Strengths

- Solution Design (Software, Hardware, Telemetry Network)
- Software
 - Decision Support Software
 - Data Collection and Data Management Software
 - Hydrologic Modeling Software
- Hardware Manufacturer
 - Sensors, Loggers and Telemetry
- Integration of Software and Hardware (ours and third party)

- We are Experts in Water



Thank you

QUESTIONS OR COMMENTS?

Contact Information

Barry Fulfer, CFM
Account Executive Texas and Oklahoma
barry.fulfer@aem.eco
Cell/Office 214-558-3926

For more information, let's talk at:
info@aem.eco

aem.eco