



Upcoming Meetings:

October 14, 2015

Guest Speaker: Commissioner Victor Vandergriff

Location: UTA

December 9, 2015

Guest Speaker: Lt. General Joe Weber, USMC, RET

Meetings are held the 2nd Wednesdays of even numbered months from 3:00 PM - 4:30 PM

Locations TBD, please check website



WWW.SETTPARTNERSHIP.COM

The Southeast Tarrant County Transportation Partnership shall direct its efforts to the following activities:

- ⇒ Working collaboratively with residents, community and business leaders, to meet the transportation and development needs of Southeast Tarrant County.
- ⇒ Advocating our legislature and local governing bodies to promote strategies for funding projects aimed at improving transportation opportunities and resources within the Tarrant County region.
- ⇒ Creating cohesive coordination among our member body to implement transportation plans, programs and projects that enhance transportation opportunities within the Southeast Tarrant County region.

What can the public do to participate now and going forward?

- ⇒ Become a member of this partnership and help us advocate for our region's transportation needs
- ⇒ Stay informed
- ⇒ Communicate to your support to elected officials
- ⇒ Participate in events and efforts that articulate support for this development

City Manager Bob Hart, Kennedale || Manager Clayton Chandler, Mansfield || City Manager Tom Hart, Grand Prairie || City Manager Trey Yelverton, Arlington || Commissioner Andy Nguyen, Tarrant County || Councilwoman Kathryn Wilemon, Arlington || Mayor Brian Johnson, Kennedale || Mayor David Cook, Mansfield || Mayor Jeff Williams, Arlington || Mayor Ron Jensen, Grand Prairie || President Lynn McGinley, Grand Prairie Chamber of Commerce || President Randall Canedy, Mansfield Frost Bank

Please email Amanda Au at Alau@Tarrantcounty.com or call our office at 817-548-3900 to learn more or reserve your place at the next meeting.

DALLAS DISTRICT

PROGRESS

Monthly Report on Dallas District Projects and Topics *** COLLIN CO. | DALLAS CO. | DENTON CO. | ELLIS CO. | KAUFMAN CO. | NAVARRO CO. | ROCKWALL CO.

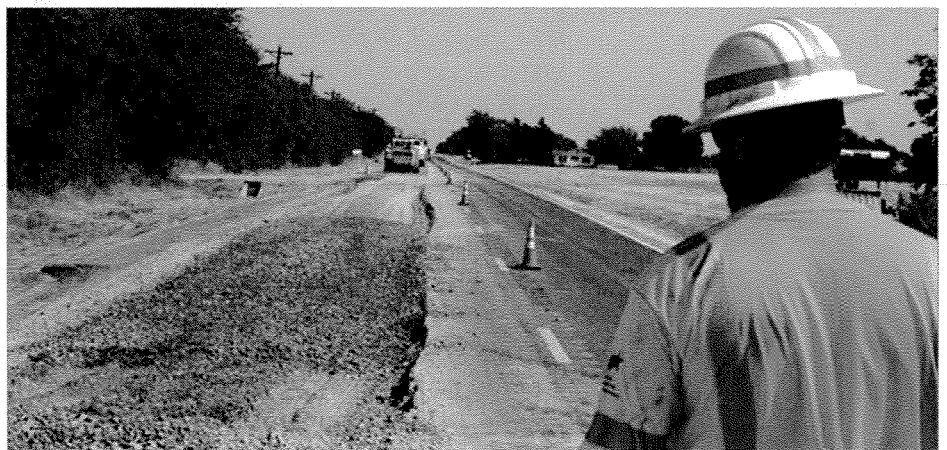
NEW FEATURE TO HIGHLIGHT MAINTENANCE

New addition to Progress Report will be used across many other platforms

DALLAS—The Maintenance Minute, launched this month, is an effort to shed light on the work being done daily in each of the district's maintenance sections.

The idea is to use the Maintenance Minute to highlight the work and achievements—large or small—from each of the seven counties that make up the Dallas District.

Public information officers have begun spending more time out in the field with maintenance crews, gathering news, photos and videos to be shared on social media and in other print publications that circulate throughout the district offices. A new logo has been designed to brand the Maintenance Minute, and the district will use the hashtag #MaintenanceMinute to help circulate information across numerous social media platforms.



Crew Chief James Swistak oversees a base repair of a mile-long stretch of FM2862 in Blue Ridge. #MaintenanceMinute

SOURCE: www.txdot.gov

TxDOT graphic



The new #MaintenanceMinute logo helps build a strong brand unique to the Dallas District.

SOURCE: www.txdot.gov

TxDOT graphic

"We love this idea," said Michael Anthony, TxDOT's Ellis County maintenance supervisor. "We are definitely excited to highlight our guys and the work they do every day."

The topics covered by the Maintenance Minute will range from major road closures to minor pothole repairs, providing another tool that will help TxDOT push the message of how the Dallas District strives daily to build a safe

and efficient traffic system.

The addition of the Maintenance Minute to The Progress Report means readers will be able to find a rundown of what happened the previous month in each of the maintenance sections. On the back page— replacing the monthly Kudos section—will be bulleted highlights of some of the things accomplished at each maintenance office. The same feature stories, which readers have grown accustomed to, will remain on the front page, highlighting the progress of major projects.

We hope you enjoy this new feature, as we put additional focus on the hard work being done in the field by such a dedicated and selfless group of men and women.

AUGUST 2015 MAINTENANCE ACCOMPLISHMENTS:

Navarro County:

- FM 636—Curb removal and replacement

Kaufman/Rockwall:

- FM 2578—Base repair and ditch cleaning
- I-20: Pothole work and herbicide
- FM 148: New guardrail
- FM 552: Pothole work

Ellis County:

- I-45 Frontage Road—Pothole work, herbicide and erosion control
- US 287—Litter removal
- US 287/I-45—Slope repair

Denton County:

- FM 1385—Sealing base repair, traffic control, new signals
- I-35—Litter removal

Collin County:

- FM 2862—Overlay, base repair
- SH 121/SH 160—Herbicide
- US 75—Guardrail repair, concrete traffic barrier replacement.

AUGUST 2015 LET PROJECTS

CSJ NUMBER	HWY	LIMITS	TYPE OF WORK	EST. (M)	BID (M)	(%)	EST. TOTAL COSTS (M)**	CONTRACTOR	
0048-04-079	I-35E	US 77 south of Waxahachie to US 77 north of Waxahachie	Reconstruct and widen from 4 lanes to 6 lanes	\$138.40	\$126.41	-8.66	\$144.23	OHL USA, Inc.	1
1451-01-025	FM 55	At Big Onion Creek	Replace bridge and approaches	\$1.43	\$1.53	6.83	\$1.76	IEA Inc.	2
AUGUST 2015 TOTAL				\$139.83	\$127.95	-8.50	\$145.98		
DISTRICT FY ACCUMULATIVE LETTINGS				\$1,423.17	\$1,527.06	7.30			
DALLAS DISTRICT LETTING CAP							\$1,046.87*		

*District FY 2015 Letting Vol. Cap includes the following:
 1) The SH 183 Managed Lanes project for \$513 million.
 **Est. Total Proj. Costs includes estimated PE, ROW, E&C, Indirect Costs and Potential Change Order Costs at the time of bid.

SEPTEMBER 2015 PROJECTED LETTING PROJECTS (SUBJECT TO CHANGE)

CSJ NUMBER	HWY	LIMITS	TYPE OF WORK	EST. (M)	
0048-08-049	I-35E	2 miles south of FM 566 (Hill C/L) to US 77 south of Waxahachie	Widen 4 lane rural to 6 lanes	\$34.68	1
0081-13-041	I-35W	Eagle Parkway to SH 114	Construct 2 lane southbound frontage roads	\$17.23	2
0092-14-080	I-345	I-30: northbound & southbound to SP 366 over I-30, US 75, and DART Railroad	Repair steel elements subject to fatigue loading	\$28.59	3
0281-01-032	SH 78	FM 6 to Bus 78E (North)	Mill, base repair and overlay	\$2.65	4
0442-02-157	I-35E	On I-35E, SL 12, and SP 408	Full depth repair concrete pavement and overlay	\$3.29	5
0047-06-157*	US 75	Various locations in Collin County	For the construction of full depth repair	\$1.32	
0048-03-092*	US 77	Various highways in the Dallas District	Seal coat	\$12.10	
TOTAL				\$99.86	

*Unmapped.

COMPLETED CONSTRUCTION PROJECTS (FROM AUGUST 1 - 31, 2015)

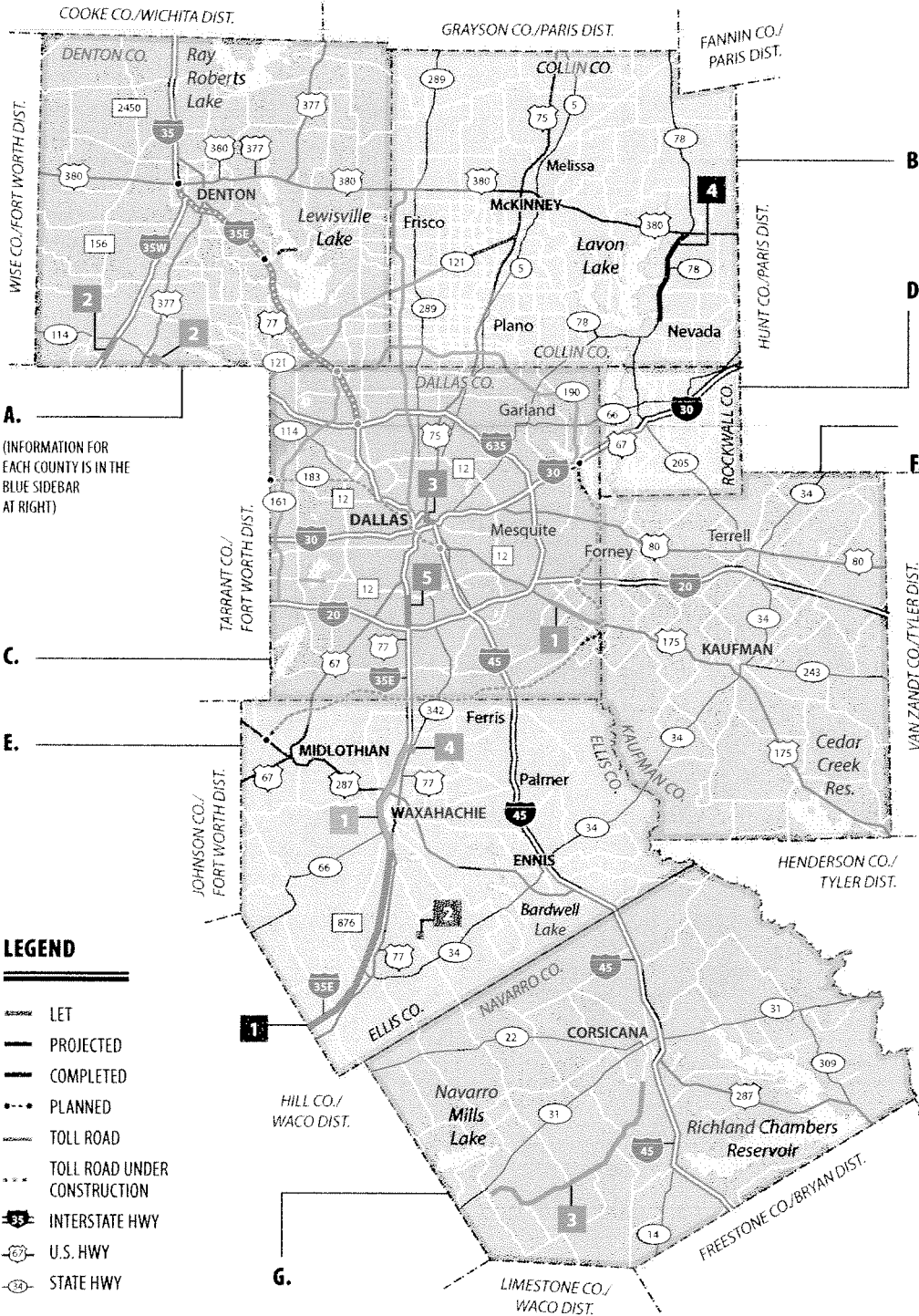
CSJ NUMBER	HWY	LIMITS	TYPE OF WORK	DATE COMPLETED	COST (M)	
0197-02-114	US 175	West of Simonds Rd. to east of Malloy Bridge Rd.	Install safety lighting	8/18/15	\$0.62	1
0353-02-060	SH 114	North of Bus 114 to west of Trophy Club Dr.	Complete main lanes & frontage roads at SH 170	8/07/15	\$33.33	2
0162-09-035	FM 709	Waco St. near Dawson to North of FM 2555	Provide additional paved surface width	8/19/15	\$4.79	3
0048-03-087	US 77	At SH 342	Rehabilitation of traffic signals	8/21/15	\$0.27	4
TOTAL					\$39.01	

SOURCE: Texas Department of Transportation.

TxDOT graphic

DALLAS DISTRICT PROJECTS MAP

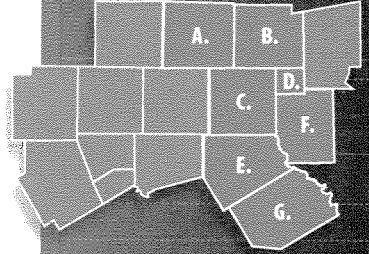
Colored and numbered boxes correspond with the charts on page 2 and show projects that have let in August, are projected to let in September or have recently been completed.



A.
(INFORMATION FOR EACH COUNTY IS IN THE BLUE SIDEBAR AT RIGHT)

- LEGEND**
- LET
 - PROJECTED
 - COMPLETED
 - ... PLANNED
 - TOLL ROAD
 - TOLL ROAD UNDER CONSTRUCTION
 - INTERSTATE HWY
 - U.S. HWY
 - STATE HWY

SOURCE: TxDOT research.
*POPULATION ESTIMATE: NCTCOG.



DALLAS DISTRICT TOTALS
 VEHICLE REGISTRATION | 3,591,178
 *POPULATION ESTIMATE | 4,259,090
 LANE MILES | 10,847.34

A. | DENTON COUNTY
 VEHICLE REGISTRATION: 559,501
 *POPULATION ESTIMATE: 683,010
 LANE MILES: 1,597.47

B. | COLLIN COUNTY
 VEHICLE REGISTRATION: 680,383
 *POPULATION ESTIMATE: 804,390
 LANE MILES: 1,563.69

C. | DALLAS COUNTY
 VEHICLE REGISTRATION: 1,952,662
 *POPULATION ESTIMATE: 2,385,990
 LANE MILES: 3,440.13

D. | ROCKWALL COUNTY
 VEHICLE REGISTRATION: 79,075
 *POPULATION ESTIMATE: 80,270
 LANE MILES: 346.35

E. | ELLIS COUNTY
 VEHICLE REGISTRATION: 165,360
 *POPULATION ESTIMATE: 152,580
 LANE MILES: 1,516.77

F. | KAUFMAN COUNTY
 VEHICLE REGISTRATION: 103,929
 *POPULATION ESTIMATE: 104,600
 LANE MILES: 1,191.95

G. | NAVARRO COUNTY
 VEHICLE REGISTRATION: 50,268
 *POPULATION ESTIMATE: 48,250
 LANE MILES: 1,190.98



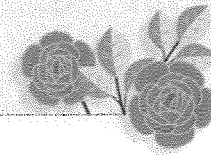
Mr. Daniel K. of Savannah, Texas:
 "The traffic signal at southbound FM 1385 and US 380 seems to be cycling too fast in all directions again. I have contacted TxDOT about this issue before and the resolution reduced congestion in all directions quite

significantly. It seems to have reset itself, though. Thanks for always being helpful. I certainly appreciate the work y'all do!"

Ms. Cheryl P. of Dallas, TX:
 "Thank you for the tremendous

improvement in re-stripping the intersection of Gaston with Grand/Garland Rd. Hopefully, this will make for safer driving conditions in our neighborhood. Job well done!"

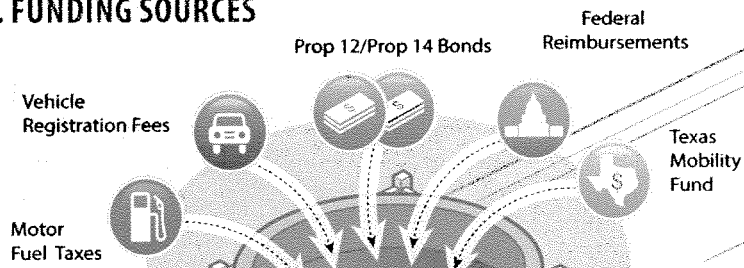
SOURCE: Texas Department of Transportation



TxDOT graphic

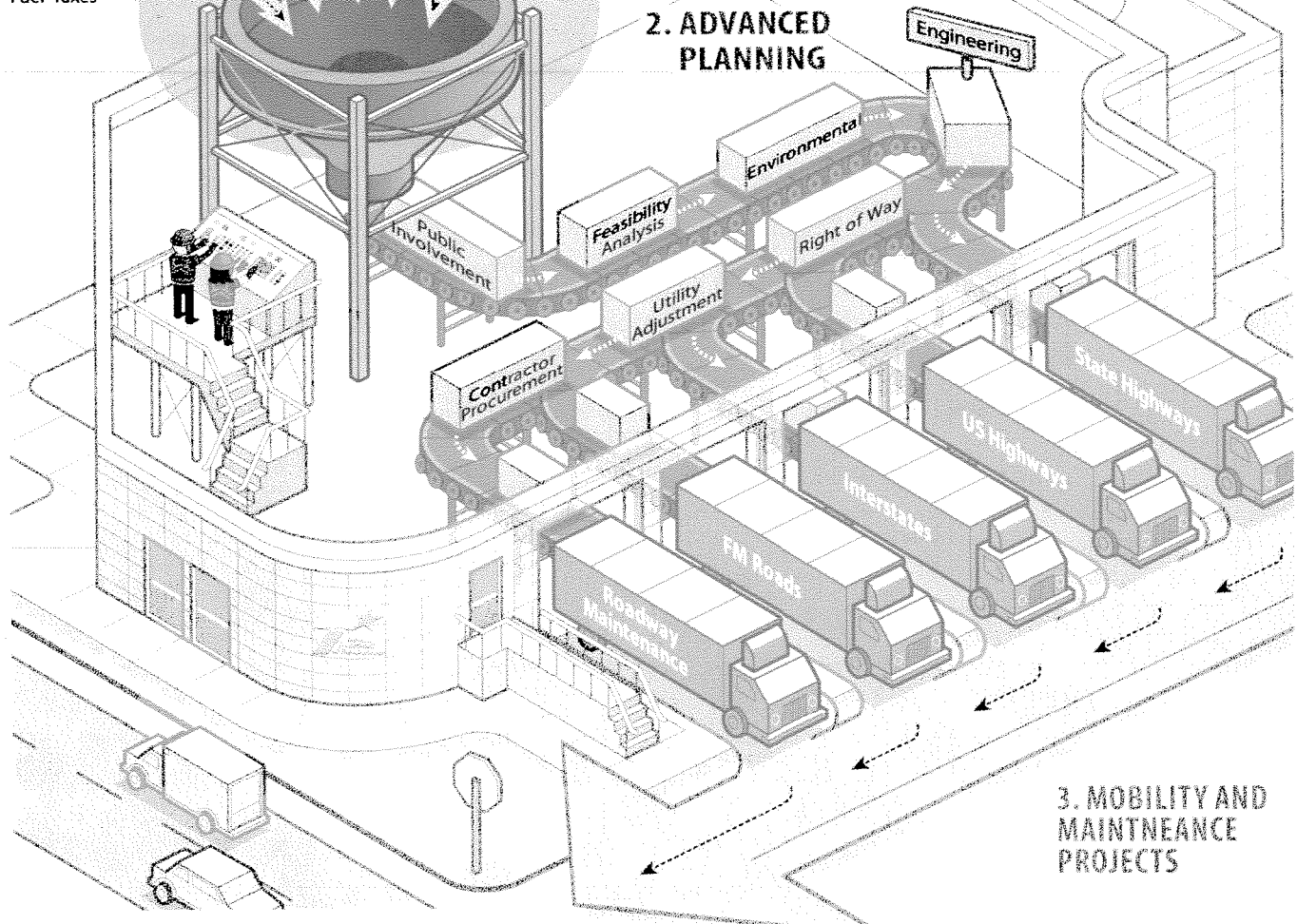
A VISIONARY LOOK AT THE BUSINESS OF BUILDING ROADWAYS

1. FUNDING SOURCES



A factory-themed metaphorical take on the business of how TxDOT builds roadways:

2. ADVANCED PLANNING



3. MOBILITY AND MAINTNEANCE PROJECTS

SOURCE: Texas Department of Transportation

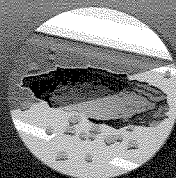
DEAN HOLLINGSWORTH/TxDOT Information Specialist

DALLAS DISTRICT | PROGRESS



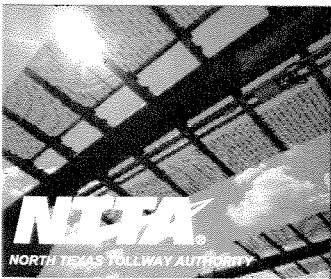
TEXAS DEPARTMENT OF
 TRANSPORTATION
 4777 E. Highway 80
 Mesquite, TX
 75150-6643

FOR MORE INFORMATION:
 214-320-4480
 dalinfo@txdot.gov
 www.txdot.gov



REPORT A POTHOLE:

Visit www.txdot.gov/contact-us/formhtml?form=Report_a_Pothole or call 800.452.9292. Progress report can be downloaded at <http://www.txdot.gov/inside-txdot/district/dallas/progress.html>



On **T**he Move

September 2015

Get Excited: Additional College & Sport TollTags Coming Soon



Stand out from the crowd as a super fan with your new specialty TollTag. Specialty TollTags combine the same benefits of standard TollTags with your favorite team

colors. Specialty TollTags will help your vehicle stand out from the herd as you save money while traveling North Texas toll roads, TEXpress lanes and Oklahoma toll roads.

- Texas A&M University
- University of North Texas
- University of Texas
- Baylor University
- Oklahoma State University
- Oklahoma University

Upgrade to a specialty TollTag emblazoned with the logo of your team or university now. Current available specialty TollTags include SMU, TCU, Dallas Cowboys, Dallas Mavericks and Dallas Stars. Upcoming designs will celebrate:

- Texas Rangers
- Texas Tech University

TollTags are available to new and existing TollTag customers at either the standard \$40 deposit or the \$20 Starter TollTag for infrequent users. Score your specialty TollTag for as low as \$19.99; SMU and TCU TollTags are free for a limited time.

Visit www.specialtytolltags.com

NTTA Maintenance: Continuing to Put Driver Safety and Comfort at the Forefront



Throughout NTTA's system, the maintenance crews continue to maintain roads to provide you, the driver, with a quality driving experience. Your toll dollars go a long way in funding the upkeep of our existing tollways, making NTTA toll roads clean and reliable. Proactive maintenance aids in extending the

life of toll roads as they age.

Crews began making pavement repairs in August at various locations along the Dallas North Tollway to improve the ride quality for motorists. This work at Galleria Drive and Spring Valley Road is designed to help improve the driving surface for a more comfortable ride along the Tollway.

NTTA teams also began restriping the Dallas North Tollway main lanes and ramps from the Sam Rayburn Tollway to U.S. 380. The new striping will help to make roadway lines more visible for drivers as they travel along the road.

NTTA will continue to refresh existing pavement markings in late September on the President George Bush Turnpike between Interstate 35E and State Highway 78 to make striping more visible for motorists day or night. The easier it is for you to see the lane lines along our roadways, the safer it is for you to switch lanes or make other traffic maneuvers.

PROJECT UPDATES

How Paving Helps Build the PGBT Fourth Lane

Paving will begin soon on a new fourth lane along the President George Bush Turnpike between Dallas North Tollway and Coit Road. The new lanes, one in each direction, are being built in the center median.

The stages of the paving process include:

- First, crews will place asphalt to

provide the initial foundation for the new fourth lane.

- Next, concrete paving will begin. During the various stages of paving, some minor lane closures may be scheduled to allow haul trucks and concrete trucks to enter and exit the work areas safely from traffic.

As always, drivers should stay alert and exercise caution in construction zones. Remember, that text or call can wait. NTTA wants drivers on NTTA roadways to arrive at their destinations safely. Stay Alive. Just Drive.

DNT: Work on Intersection Bridges Continues Into September

During the summer, Dallas North Tollway drivers likely noticed work on the DNT bridges throughout Plano as crews remove concrete bridge rails and bridge overhangs in the area.

The DNT Improvement Projects work has now progressed to the southbound sides of the bridges.

To minimize impacts to traffic, crews will perform this work during overnight hours to allow for city streets closures and protect the public from debris. In the coming weeks, drivers can also expect to see crews working on the bridge elements that support the additional lanes. Visit ProgressNTTA.org for

information on traffic shifts and closures.

TollTag Savings Arrive Fashionably Early on LBJ TEXpress Lanes on Sept. 10

A reminder to TollTag drivers on TEXpress Lanes – you're saving money there, too! The entire 16.5 miles of the LBJ Express Lanes project open Sept. 10, more than three months ahead of schedule, completing construction on one of the largest and most complex transportation infrastructure projects in the nation in less than five years.

The LBJ Express features a combination of four main lanes and two to three continuous frontage roads in each direction, along with two

to three TEXpress Lanes in each direction that use variable congestion-management pricing to keep traffic moving at a minimum of 50 mph.

The project provides an entirely new, rebuilt highway system across North Dallas decades earlier than possible, with improved mobility by almost doubling preconstruction roadway capacity. The LBJ Express also adds mobil-

ity and choice within the corridor, better managing the diverse and growing traffic across North Dallas.

TEXpress Lanes, toll lanes built within an existing highway, have prices that change based on the level of traffic in the corridor. TollTag customers always receive the lowest rates, and carpoolers can save even more.

CONTACT US:

CARRIE ROGERS
DIRECTOR OF GOVERNMENT AFFAIRS
214.224.2269
PETE HAVEL
DIRECTOR OF LEGISLATIVE AFFAIRS
214.224.2287

NTTA
NORTH TEXAS TOLLWAY AUTHORITY
5900 W. Plano Parkway
Plano, Texas 75093

972.818.6882
www.ntta.org