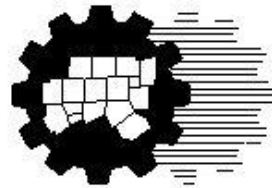




Bicycle and Pedestrian Advisory Committee (BPAC)

Regional Veloweb Update Review

August 19, 2009



**North Central Texas Council of Governments
Transportation Department**

The Regional Veloweb

A 644-mile interconnected network of off-street trails designed to provide safe efficient mobility to pedestrians, cyclists, and in-line skaters.

Design Considerations:

- Concrete surface
- Design speed of 25 miles per hour
- Recommended width of 12 feet to accommodate a variety of users
- Grade separated crossings
- Few, if any, signalized or stop sign intersections
- Easy access from roadways, particularly on-street bicycle routes





The Regional Veloweb

NCTCOG Veloweb Strategy

According to the Mobility 2030: The Metropolitan Transportation Plan for the Dallas- Fort Worth Area, 2009 Amendment:

- Prioritize funding recommendations based on locations that provide access to transit, access to high exposure areas, or complete a trail connection.
- Promote transportation plans that provide regional connectivity.
- Identify activity centers on the Veloweb plan and focus on constructing the Veloweb extending outward.

The Regional Veloweb

MTP 2030 Map

- Existing Regional Veloweb map was developed in 1997
- Recommended routes and trails included in the Regional Veloweb are considered high priority projects and are often used as part of the evaluation process when funding becomes available for various Regional Transportation Council (RTC) programs





The Regional Veloweb

Route Determination, 1997

Individual routes were determined by:

- Creating an inventory of existing and funded trails
- Identifying facilities planned by local governments
- Identifying routes that could provide air quality benefits
- Identifying routes linking transit stations
- Examining the potential of linking routes
- Examining the potential for securing free or low cost right-of-way along the proposed routes

The Regional Veloweb

MTP 2030 Map



The Metropolitan
Transportation Plan

Bicycle-Pedestrian Transportation Districts

Legend

Recommended Veloweb Routes

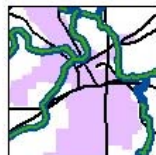
- Completed: 112 miles
- Funded: 34 miles
- Needed: 289 miles

Candidate Veloweb Routes

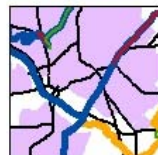
- Completed: 7 miles
- Needed: 202 miles

- Bicycle-Pedestrian Transportation Districts
Within all rail corridors, all existing and planned stations are bicycle and pedestrian districts.
- Freeways
- County Boundaries
- Metropolitan Planning Area Boundary

Fort Worth CBD



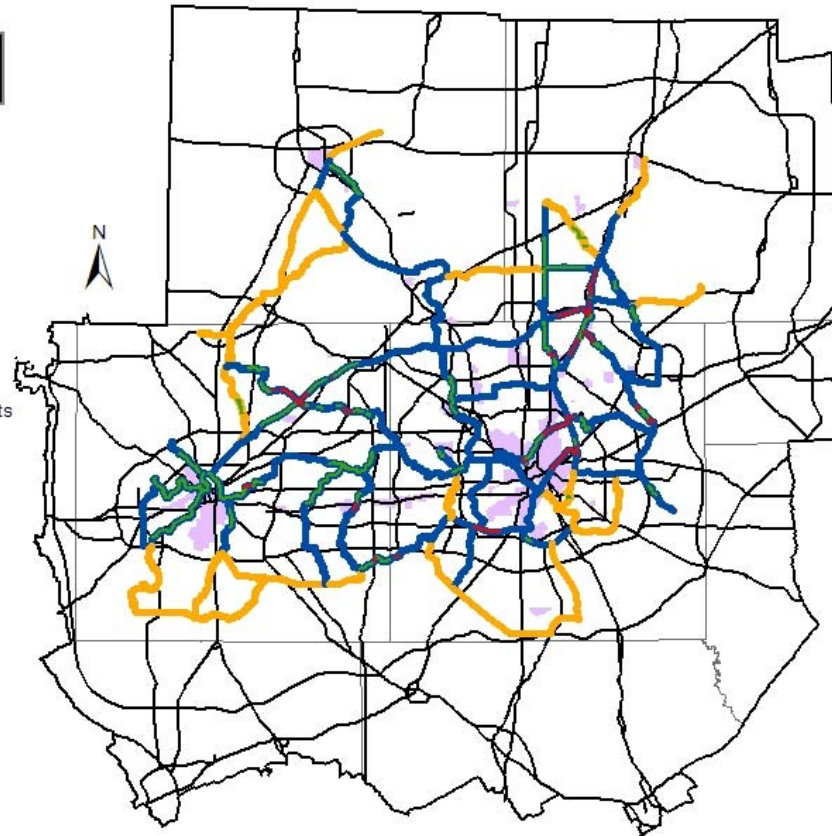
Dallas CBD



New facility locations indicate transportation needs and do not represent specific alignments



South Central Texas
Council of Governments
Transportation



January 18, 2008



The Regional Veloweb Update

Review Meetings, 2008

A series of county-specific workshops were held in 2008 as an opportunity for local government staff, bicycle and pedestrian interested parties, and interested citizens to provide feedback about existing and planned regional trail facilities.

January 31, 2008

Kick Off, NCTCOG

March 6, 2008

Tarrant County

April 3, 2008

Denton County

May 23, 2008

Dallas County

May 29, 2008

Collin County

July 17, 2008

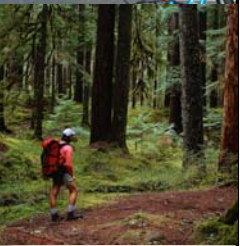
Rockwall & Kaufman Counties

August 5, 2008

Johnson & Ellis Counties

August 12, 2008

Parker County



The Regional Veloweb

Review Goals

- Assess the condition of current Veloweb facilities
- Encourage partnerships for bicycle and pedestrian facility implementation
- Identify regularly traveled routes
- Identify missing routes and unmarked trails
- Evaluate the need to re-align the Veloweb plan in areas
- Promote a consistent Regional Veloweb design
- Provide a forum to discuss issues and successes
- Evaluate overall connections to employment locations, transit stations, schools, and other commuter destinations



The Regional Veloweb

Methodology

- Inventory comments and suggestions from previously held County workshops.
- Incorporate the recommendations from the county workshops that are consistent with City/County plans and are missing connections or needed extensions.
- Acquire local cities and counties comprehensive plans, trail master plans, and/or ArcGIS shape files to identify existing, planned, and funded trails, and update the Regional Veloweb accordingly.



The Regional Veloweb

Methodology

- Further assess the Regional Veloweb based on the following conditions:
 - heavily traveled paths not already included
 - connections to transit and other desired destinations
 - extension into the proposed Metropolitan Planning Area (MPA) expanded boundary
 - utilization of levees, abandoned rail lines, and utility corridors for trail right-of-way
 - costly right-of-way attainment
 - connections between jurisdictions

The Regional Veloweb

Updated Map



DRAFT

Regional Veloweb

Legend

Regional Veloweb Routes

- Existing
- Funded
- Needed

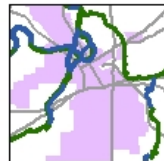
Recommendations from County Workshops

- Re-Alignment
- Missing Connections
- Needs Improvement
- Funded (newly identified)
- Existing (newly identified)
- Bicycle-Pedestrian Transportation Districts
Within all rail corridors, all existing and planned stations are bicycle and pedestrian districts.

- Freeways
- County Boundaries
- Metropolitan Planning Area Boundary
- Major Lakes

Fort Worth CBD

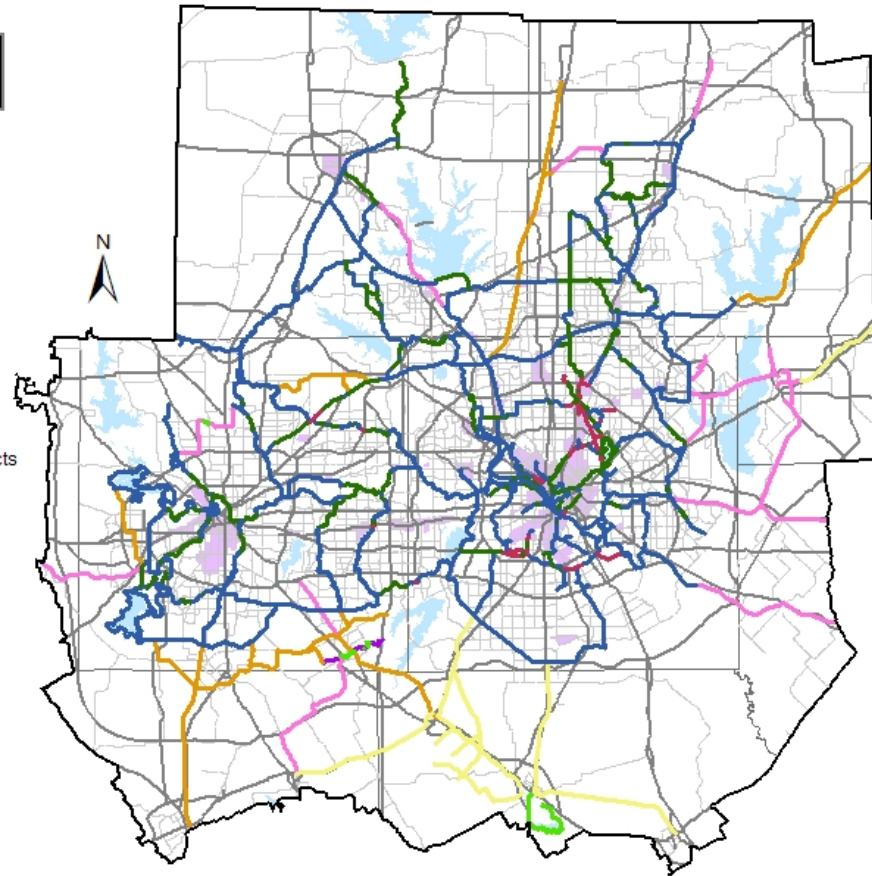
Dallas CBD



New facility locations indicate transportation needs and do not represent specific alignments



South Central Texas
Council of Governments
Transportation



August 13, 2009

The Regional Veloweb

Next Steps



| | |
|----------------------------|--|
| August BPAC Meeting | Present Inventory Map |
| October BPAC Meeting | Distribute survey to identify criteria for prioritization |
| October 2009/November 2009 | Metropolitan Planning Area (MPA) Boundary Expansion Approval |
| Spring BPAC Meeting | Present Final Drafts and receive feedback |
| Spring 2010 | Outreach Meetings (3) |
| Spring 2010 | NCTCOG Public Meetings |
| Spring 2010 | Present to STTC |
| Spring 2010 | Present to RTC |
| 2010 – 2011 | Include in re-write of MTP |

Contact Information

Deborah Humphreys
Transportation Planner
dhumphreys@nctcog.org
or (817) 608-2394

On the Web:

www.nctcog.org/trans/sustdev/bikeped/veloweb.asp



Why Bike/Walk? Health ... Fitness ... Fun ... Economic Savings ... Air Quality Benefits ... Gain Support to Expand Regional Facilities ... Foster Bicycle/Pedestrian Friendliness ... Create Strength in Numbers ... Create a Memory ... Try Something New or Different ... Start a New Routine ... Inspire an Active Lifestyle for your Community and Family

