



REGIONAL LANDSCAPE INITIATIVES

Best Management Practices for
North Texas Water Conservation
Programs



WITH GREAT POWER COMES GREAT RESPONSIBILITY

- Population
- Growth Rate
- Water Demand





//

**A GOAL
WITHOUT
A PLAN
IS JUST A WISH**



THE WORK CONTINUES

- Water conservation coordinators need support and resources
- Quality of life AND water efficiency
- Clarity for customers = increased buy-in



CREATED WITH YOU IN MIND

- Simple
- Collaborative
- Talking points
- Resources




**NOW IS
THE TIME**



**STAKES ARE
HIGH**

A close-up photograph of an irrigation system in operation. Multiple nozzles are spraying water onto a lush green lawn. The water droplets are captured in mid-air, creating a misty effect. In the background, a blurred residential street with houses and trees is visible. A dark, vertical pipe or riser is partially visible in the lower right foreground.

What We Are Proposing



Promotion of ET-Based Weekly Watering Advice & Recommendations



Recommended Plant List



**Additional Water Saving
Measures for New
Irrigation System Requirements**

A close-up photograph of a calendar grid on a wooden desk. The calendar shows dates from 7 to 30. A pencil is visible on the left side, and a yellow pencil is at the bottom right. A blue semi-transparent rectangle is overlaid on the calendar, containing the text "Year-Round Twice Per Week Watering Schedules".

Year-Round Twice Per Week Watering Schedules

Time of Day Watering Schedules



A photograph of a parking lot with a central island. The island has a red curb and a green lawn with a sprinkler. The parking lot is paved with asphalt. In the background, there are trees, a building, and a hill. A blue overlay with white text is centered over the image. The text reads "Water Waste Provisions".

Water Waste Provisions

NO PARKING FIRE



Rain and Freeze Sensors for Commercial Sprinkler Systems

Time of Day Watering Schedules



Adopt a Water Efficiency Outreach Program



We're
Chasing Leaks

for



Fix a Leak Week



PUT DOWN ROOTS

Outreach Assistance Available
from Water Providers

PLANTS

WATERISAWESOME.COM

A photograph of a baseball field with a blue text overlay. The field is green with brown dirt paths. In the background, there are trees and a building. A sign is visible on the right side of the field.

Park/Athletic Field Conservation



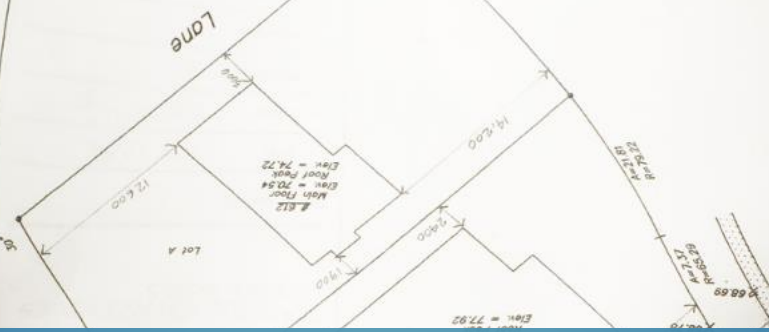
Golf Course Conservation and Reuse

Use of Licensed Irrigators to Inspect & Review All Irrigation Permits & Plans

NOTE
Unless otherwise specified, the dimensions shown relate to distances from property boundaries to foundation walls only at the date of survey.
Title information is based on a Title Search dated December 13th, 2001
Title No. _____
Property Boundaries of Parcel Affected shown thus: _____
Foundations shown thus: _____
Elevations are geodetic and derived from ASCM 292805(Elev=1064.22)
Add 1000 m. to all elevations to obtain true elevations.
Elevations are metric and shown thus: _____
Power poles are shown thus: _____
X 65.32
X 77.92

BLOCK PLAN
1.250

Lane



Frd. no. 84
14,500



A photograph of a residential driveway. The driveway is paved with concrete and asphalt. In the background, there is a brick house with a white garage door and an American flag hanging from the porch. To the right, there are green trees and a lawn. A blue rectangular box is overlaid on the center of the image, containing white text.

**Offer Free or Discounted
Irrigation System Check-Ups
for Residential Customers**

A close-up photograph of a green irrigation controller panel. The panel features several buttons: a red button labeled 'OFF', a blue button with a water drop icon, and a blue button with a clock icon labeled 'DATE/TIME'. A semi-transparent blue rectangular box is overlaid on the center of the image, containing white text.

**Rebates to Encourage
Improved Efficiency in
Existing Irrigation Systems**

A man in a green t-shirt and khaki shorts stands in a residential neighborhood. A blue semi-transparent text box is overlaid on the image, containing the text "YOU'VE GOT THE POWER". The background shows a street with houses, a tree in a concrete planter, and a person in a white cap and sunglasses partially visible.

**YOU'VE GOT
THE POWER**



ARE YOU IN?

Find the Regional Landscape Initiatives @
waterisawesome.com/articles/rli