



[Wastewater Treatment](#)

[Water Treatment](#)

[Water Storage](#)

[Lake Livingston](#)

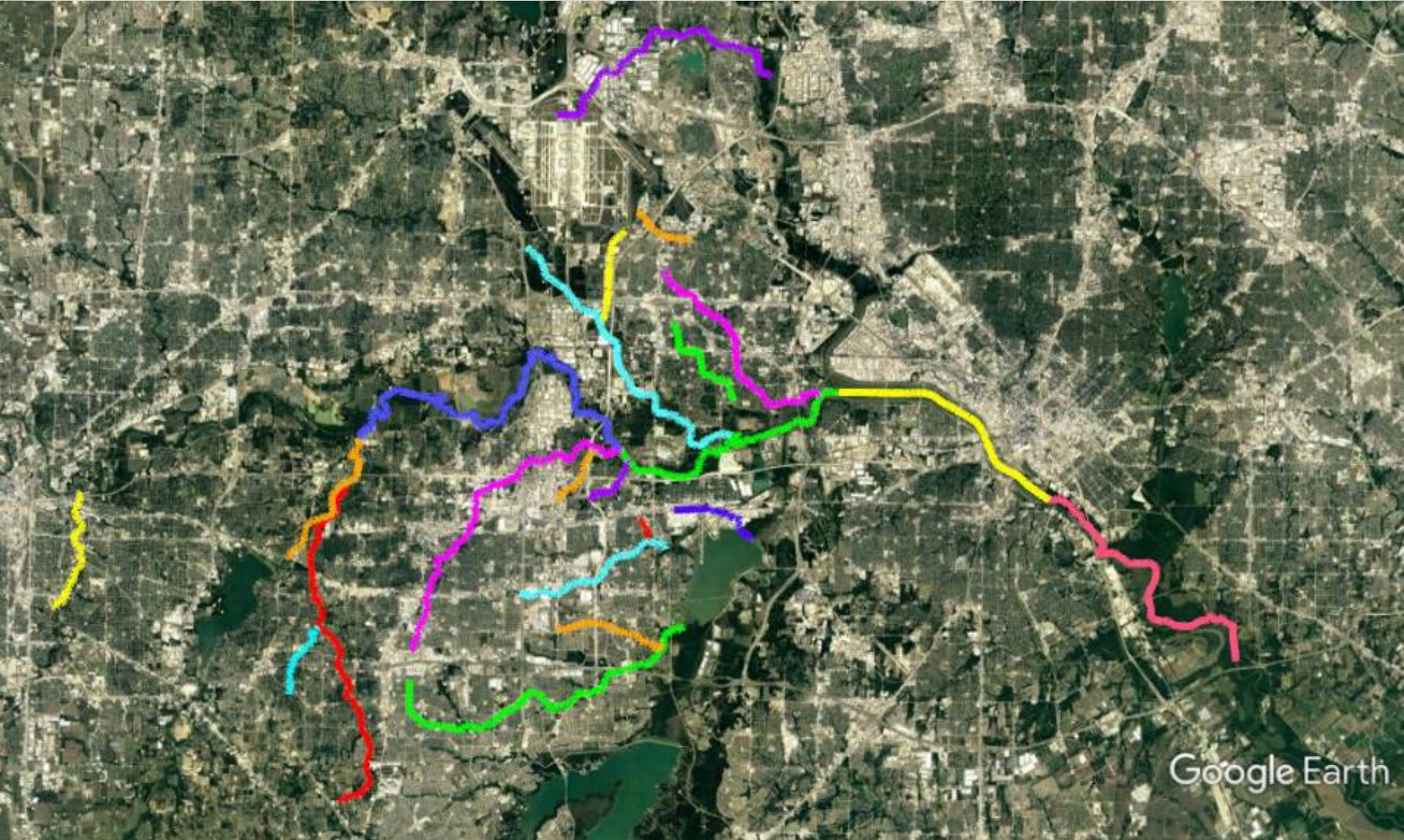
[Recreation Facilities](#)

# Monitoring and Assessment News

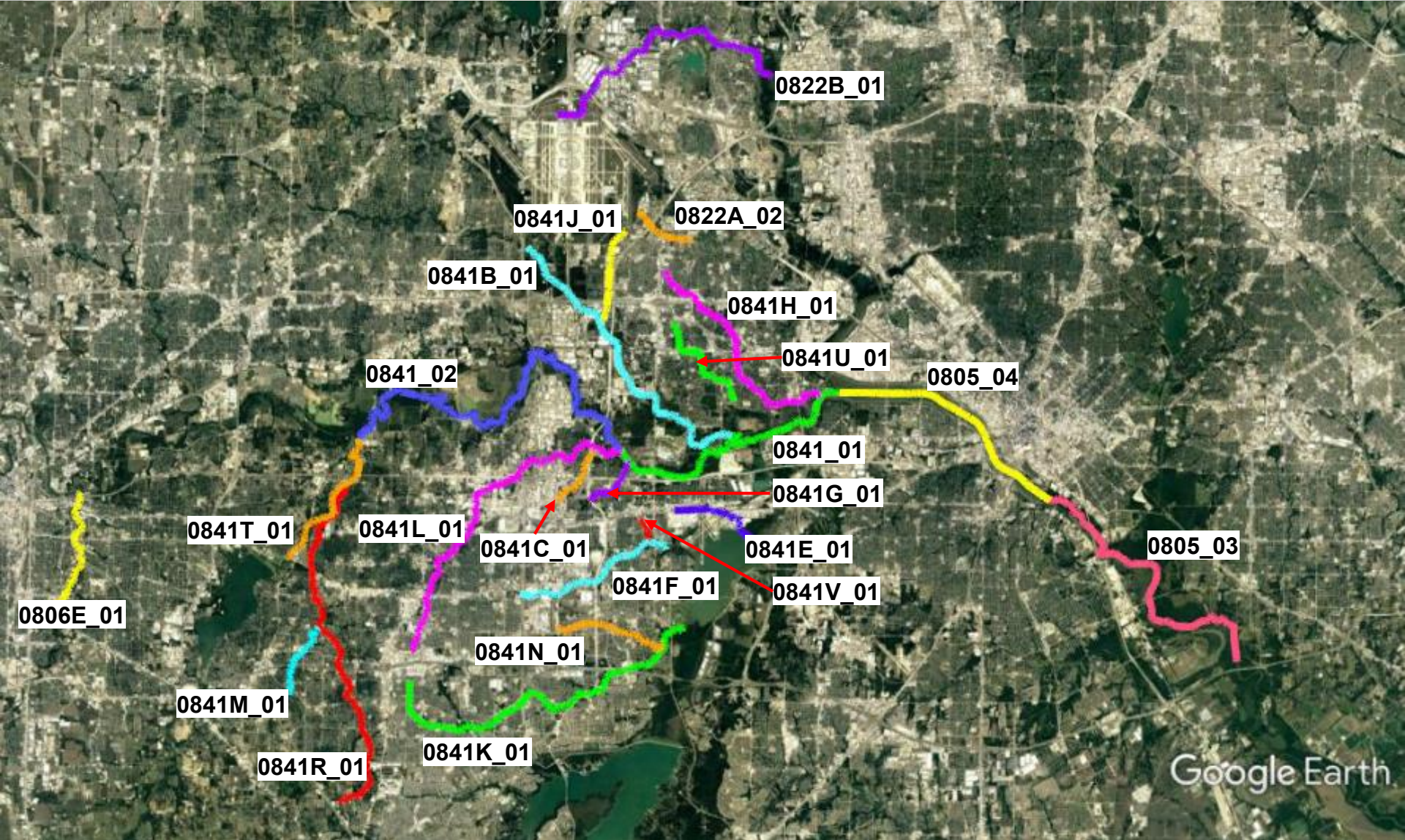


Trinity River Authority of Texas

# I-Plan Assessment Units



# I-Plan Assessment Units



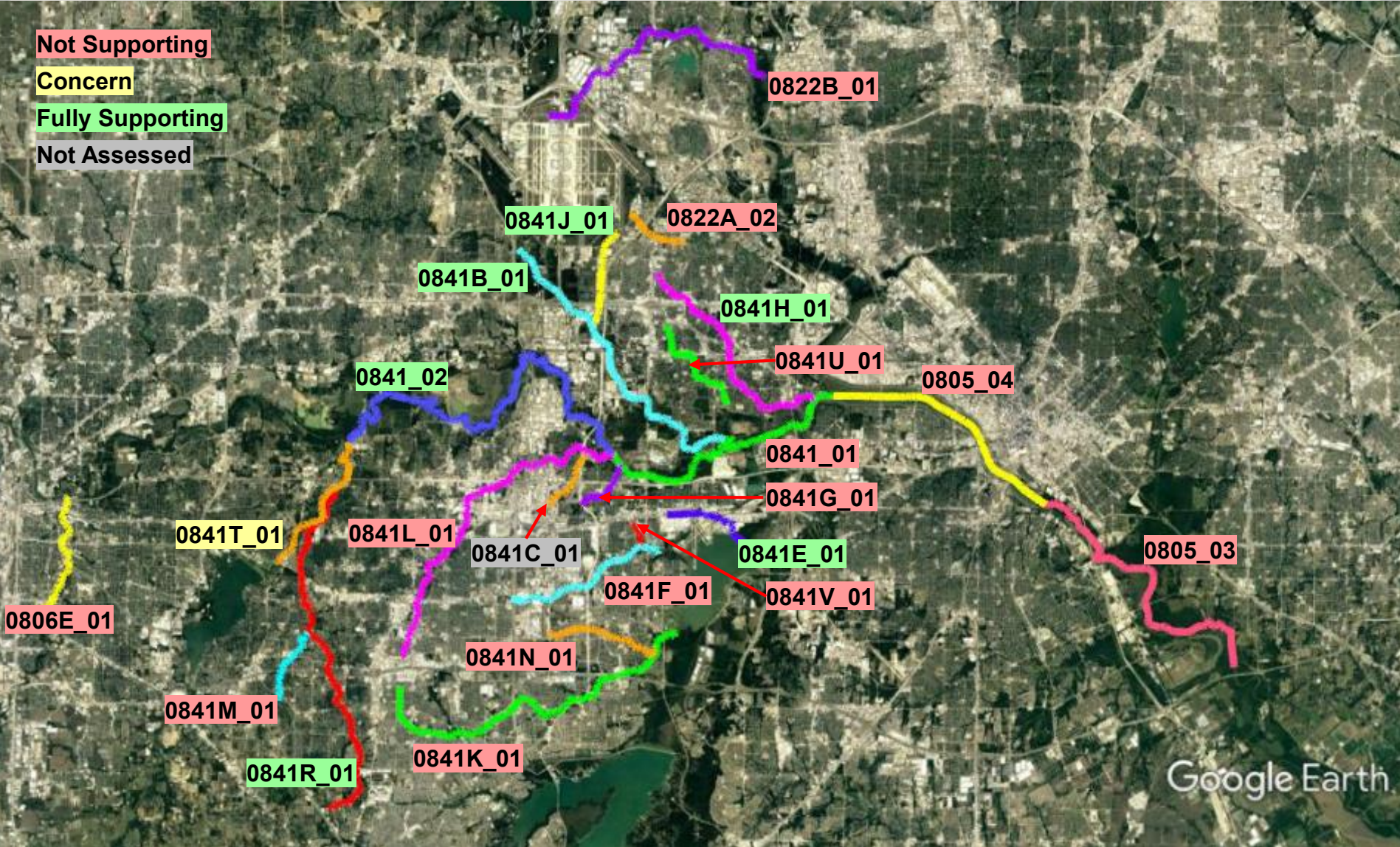
# Draft 2020 Texas Integrated Report

Not Supporting

Concern

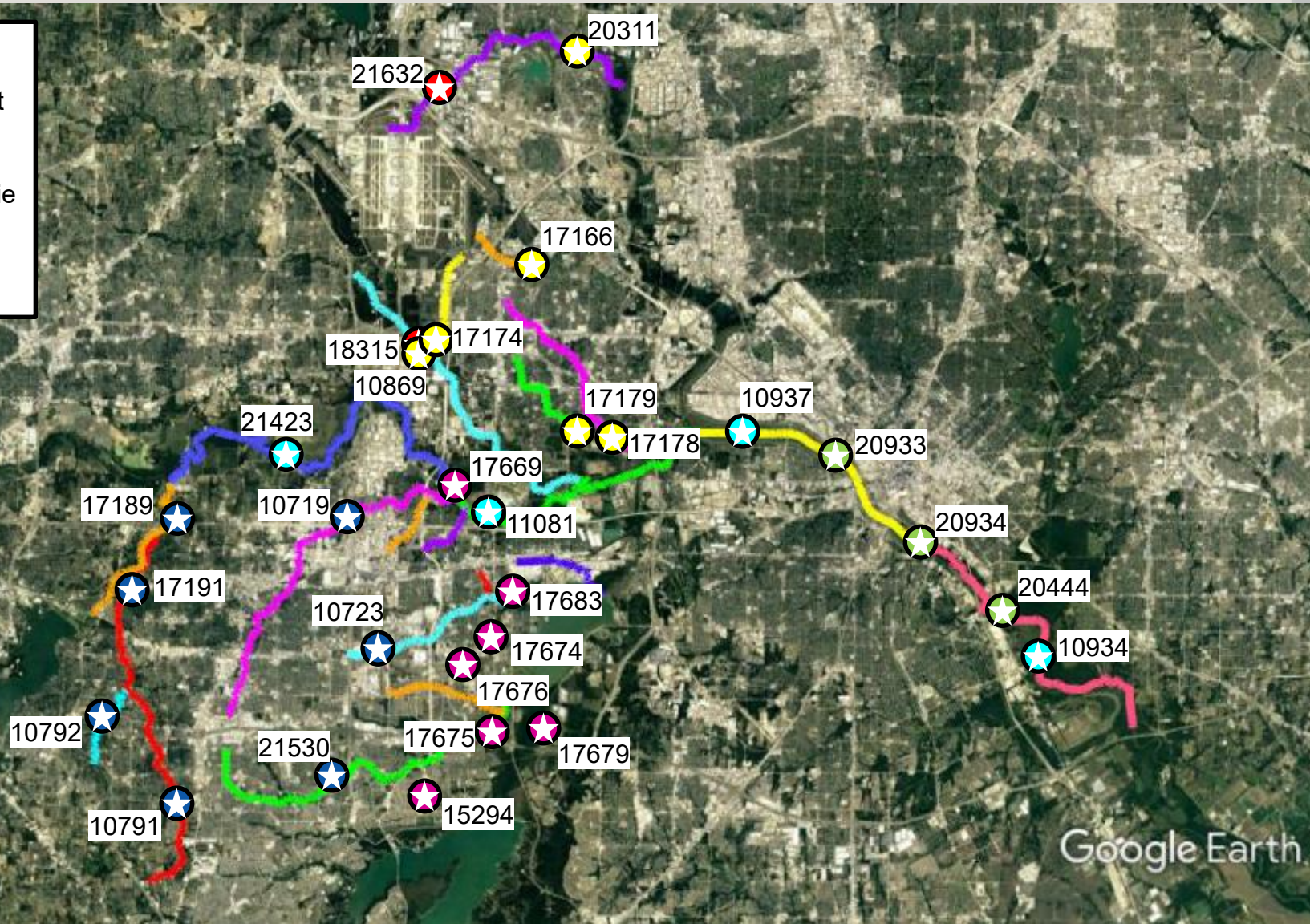
Fully Supporting

Not Assessed



# 2020 Monitoring Schedule

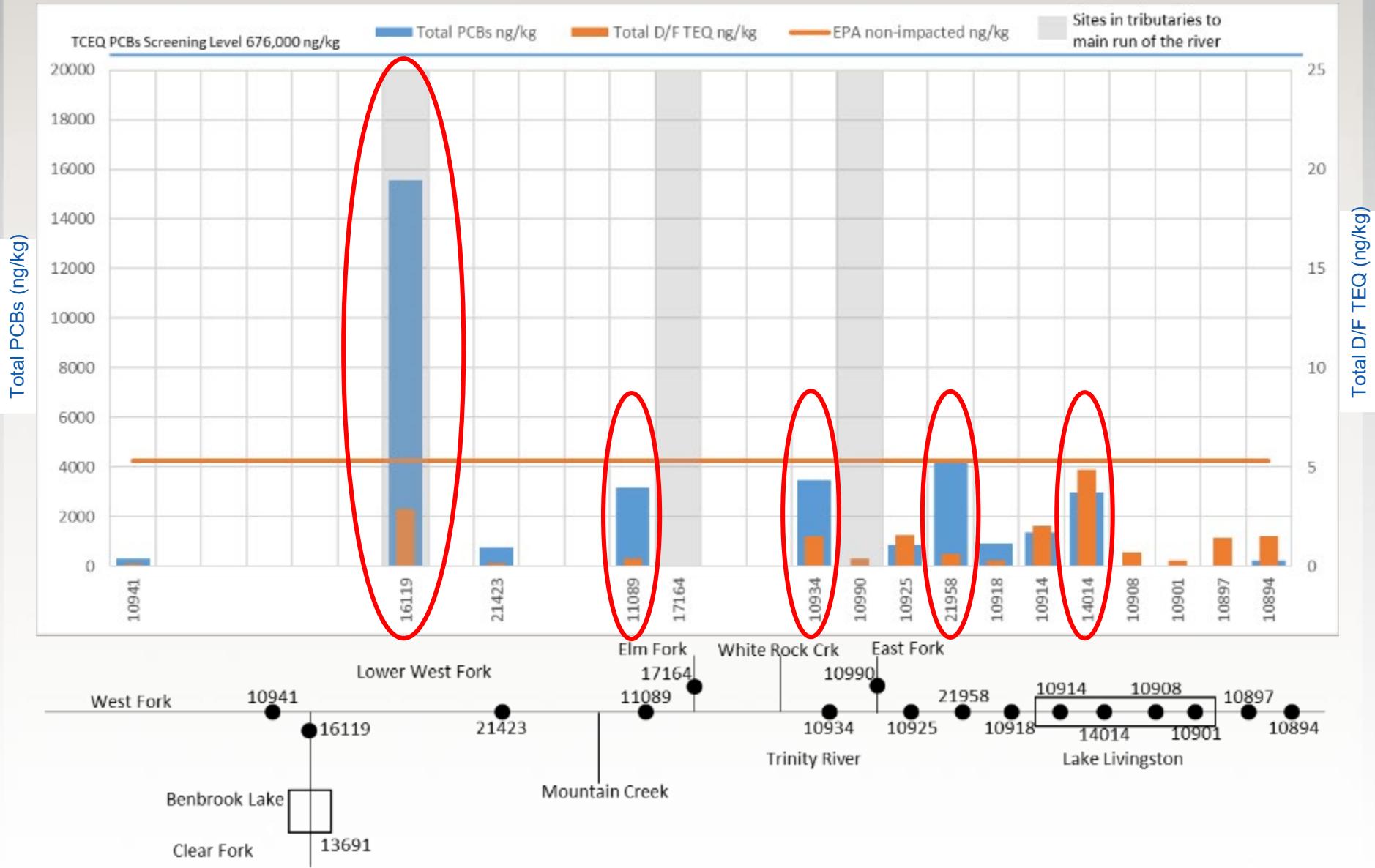
-  Arlington
-  DFW Airport
-  Dallas
-  Grand Prairie
-  Irving
-  TRA



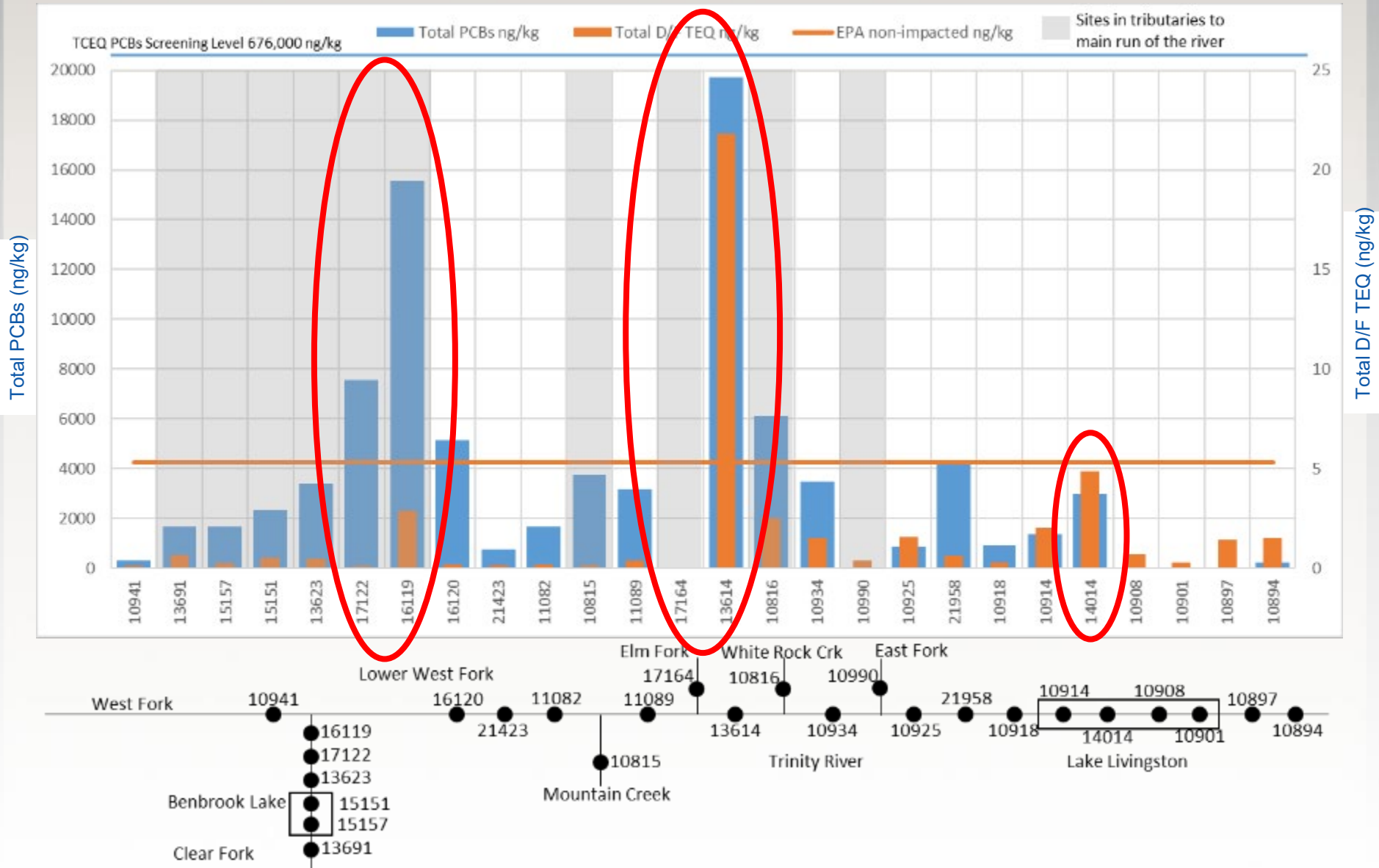


# PCBs, Dioxins, and Furans in Sediments

# PCBs, Dioxins, and Furans in Sediments Phase 1 Results

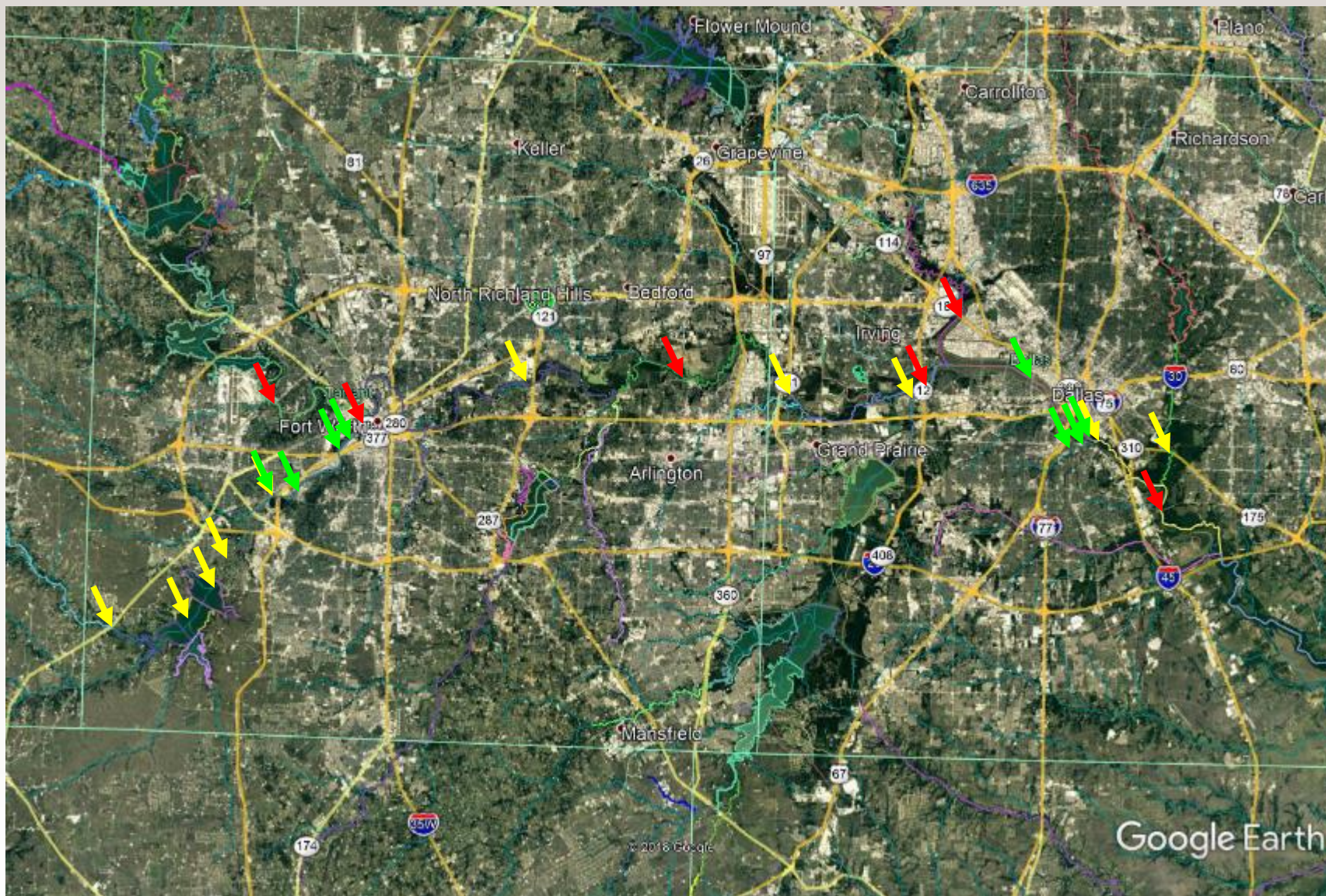


# PCBs, Dioxins, and Furans in Sediments Phase 2 Results





# Sites



↓ Phase 1 Sites

↓ Phase 2 Sites

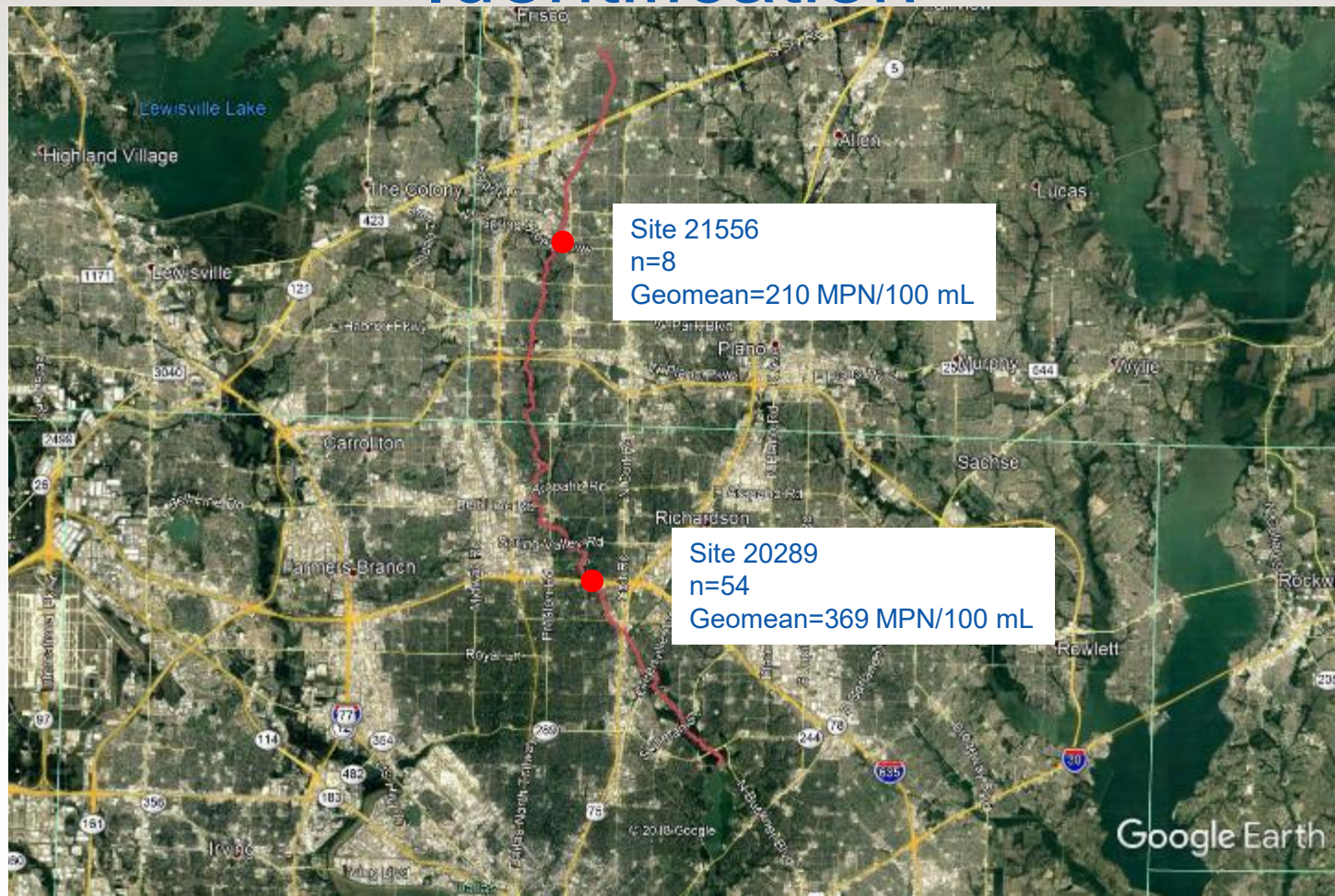
↓ Phase 3 Sites



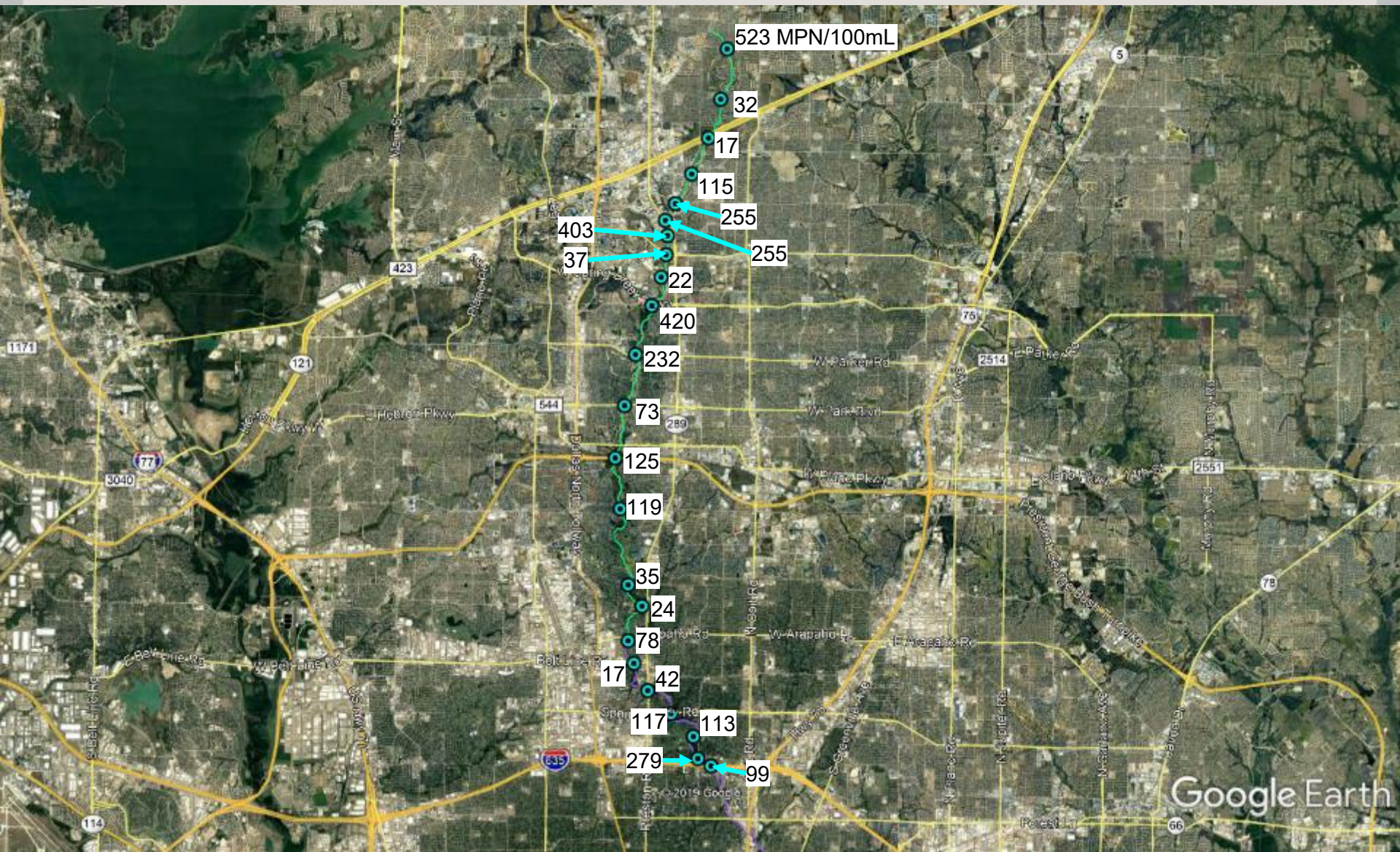
# White Rock Creek *E. coli* Source Identification



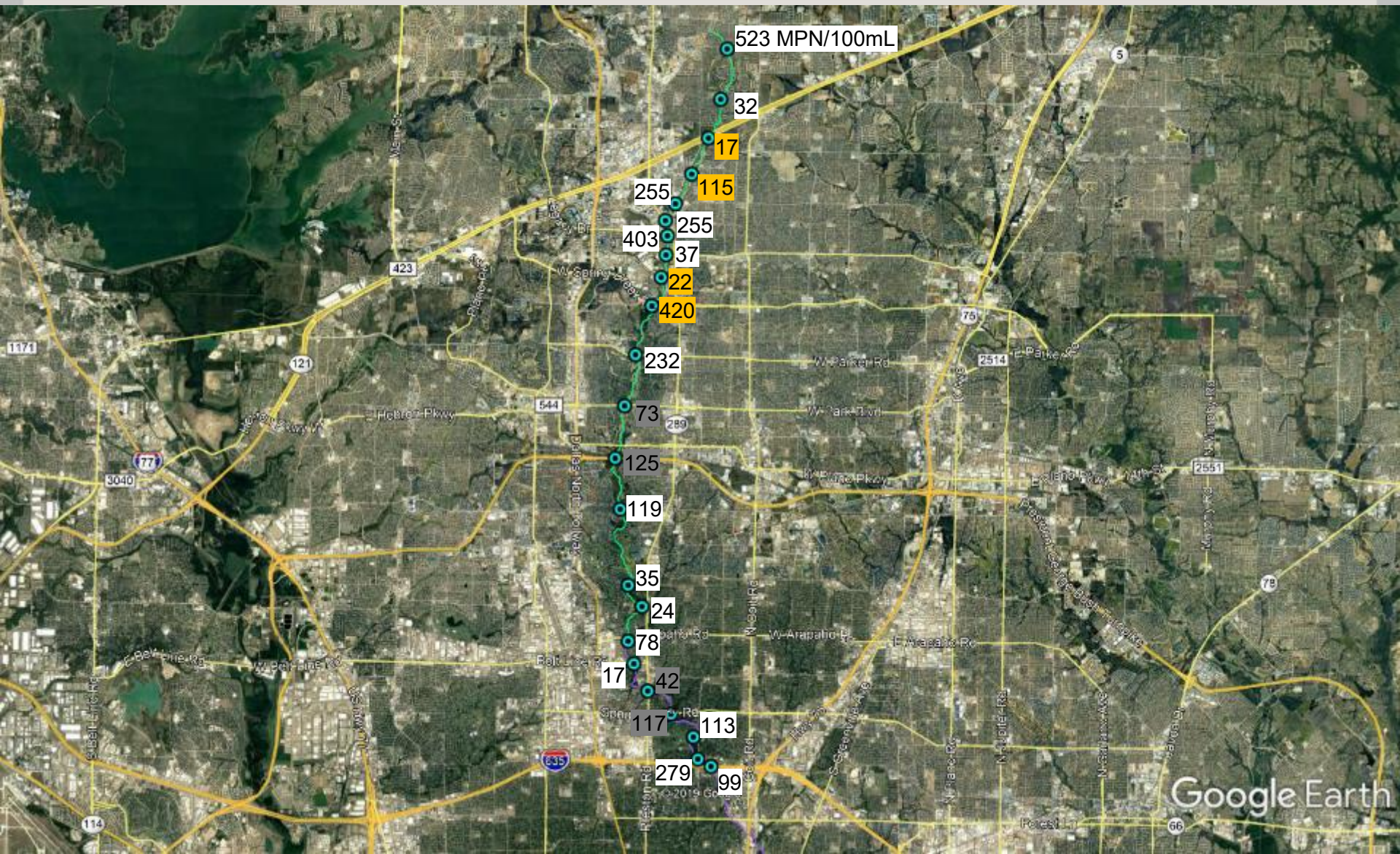
# White Rock Creek *E. coli* Source Identification



# White Rock Creek *E. coli* Source Identification Dry Weather



# White Rock Creek *E. coli* Source Identification Dry Weather



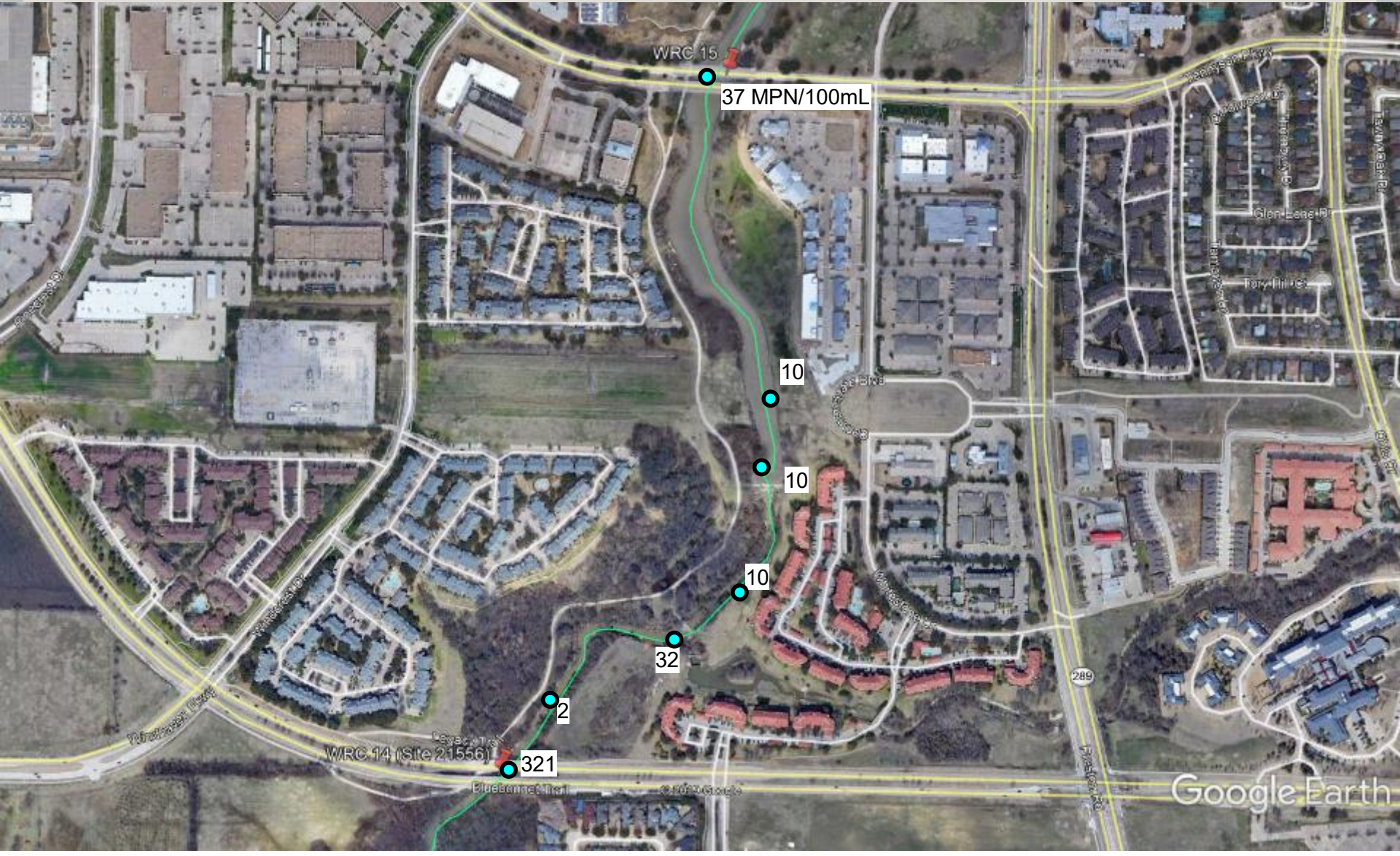
# White Rock Creek *E. coli* Source Identification

## Dry Weather Fine Scale – 121 to McDermott



# White Rock Creek *E. coli* Source Identification

## Dry Weather Fine Scale – Tennyson to Spring Creek





## *E. coli* in Sediment





# Water Quality Protection Surveys

# Village Creek-Lake Arlington Water Quality Protection Survey



**Station** Village Creek at Freeman Road WS19

**Date/Time** 3/7/2018 10:30

## Waste Type

Toxic +5	Medical waste +5	Human Waste +5	Dead animals +5
Graffiti +5	Construction +2	House Waste +2	Beer cans etc. +1
Basic Litter +1	Fishing +1	Tires +1	Other +?
			Subtotal: <u>22</u>

## Erosion

Yes +5	No +0	Subtotal: <u>22</u>
--------	-------	---------------------

## Homeless Occupation

Yes +10	No +0	Subtotal: <u>32</u>
---------	-------	---------------------

## Estimated Flow Discharge

> 10CFS +10	1-10CFS +5	<1CFS +1	No Flow +0
			Subtotal: <u>42</u>

## Trash

From offsite X1	Placed or dumped X2	Product: <u>84</u>
-----------------	---------------------	--------------------

## Waste Quantity

< Trash can X1	> trash can < dumpster X1.2	About 1 Dumpster X1.5	> Dumpster X2
			Product: <u>168</u>

## Impact Score

Minimal 1 - 12	Some 12.1 - 20	Significant 20.1 - 40	Critical 40.1+
----------------	----------------	-----------------------	----------------

Photos Taken?	Notes
---------------	-------

Yes	This site has it all in mass quantities, includes automotive fluids, paints, and possible theft of items. Camera battery died before site was fully explored.
-----	---



# Story Map




Primary Lake Arlington Wat: X


← → ↻ 🔍 tregis.maps.arcgis.com/apps/Shortlist/index.html?appid=b02ae97e7e7940c1e472045e5544105

Apps ScienceAlert: The B... ScienceDaily: Your s... Yahoo CRF Data Tool AWS Precipitation... Get Maps | topView Textavel USGS WaterWatch... Music and Podcasts... Expenses LIMS LabWare 7





















## Preliminary Lake Arlington Water Quality Protection Survey 2018

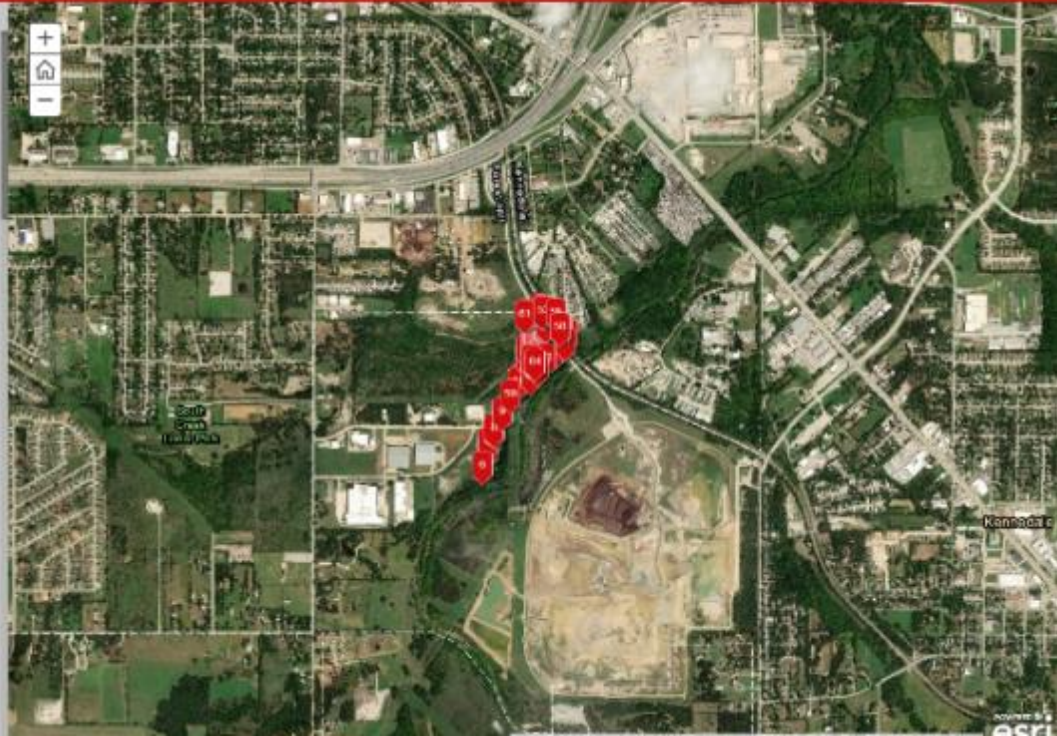
Village Creek aka Arlington Watershed Protection Plan Trinity River Authority Planning Environmental Services

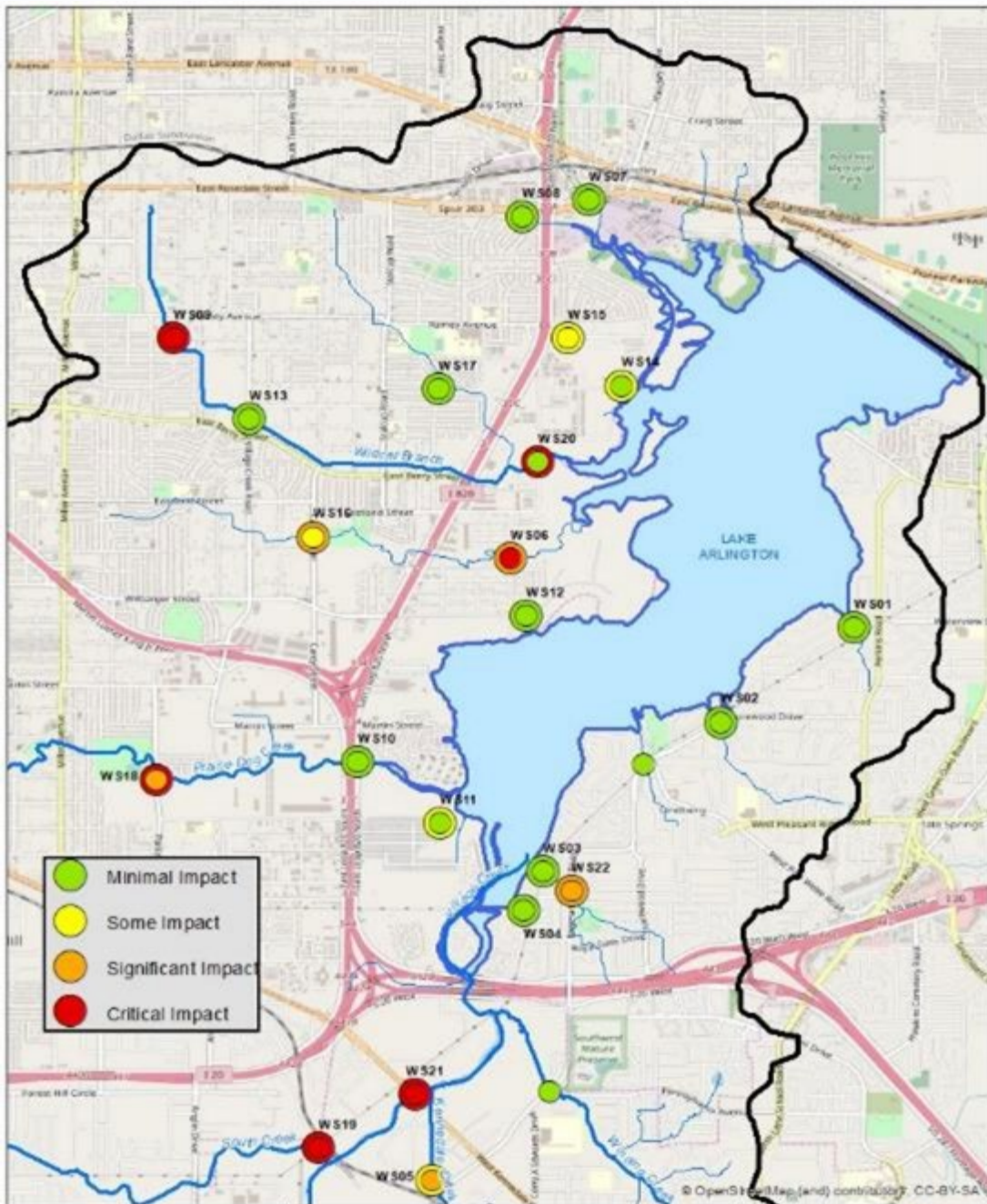
A story map   



Overview WS01 WS02 WS03 WS04 WS05 WS06 WS07 WS08 WS09 WS10 WS11 WS12 WS13 WS14 WS15 WS16 WS17 WS18

 1 WS18	 2 WS18	 3 WS18	 4 WS18
 5 WS18	 6 WS18	 7 WS18	 8 WS18
 9 WS18	 10 WS18	 11 WS18	 12 WS18
 13 WS18	 14 WS18	 15 WS18	 16 WS18
 17 WS18	 18 WS18	 19 WS18	 20 WS18





# WS20 Clean Up Effort - Before



# WS20 Clean Up Effort - After



# WS18 Code Enforcement - Before



# WS18 Code Enforcement - After







Life, uh,  
finds a  
way.

Angela Kilpatrick  
kilpatricka@trinityra.org  
817 493 5179