

# North Central Texas Watershed Stakeholders Meeting

March 16, 2023

Elena Berg, Environment and Development Planner III

[eberg@nctcog.org](mailto:eberg@nctcog.org)

*Prepared in cooperation with the  
Texas Commission on Environmental Quality and  
U.S. Environmental Protection Agency*



# Today's Agenda

## **Welcome and Introductions**

## **Presentation – Conserving Land, Protecting Water in North Texas**

- Blake Alldredge, Water Education Coordinator  
Upper Trinity Regional Water District

## **Roundtable Discussion**

- Please share current water quality tasks or information and identify any areas of collaboration.

## **NCTCOG Updates**

- Elena Berg, NCTCOG

## **Wrap-Up and Adjourn**

# Introductions

# Conserving Land, Protecting Water in North Texas

**Blake Aldredge**

**March 16, 2023**



UPPER TRINITY  
CONSERVATION TRUST

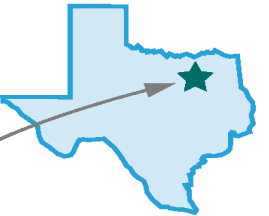




A photograph of a water treatment facility. In the foreground, a large canal of dark water flows. In the background, there is a large, light-colored building with a prominent blue roof. To the right of the building, there are several large white storage tanks. The sky is overcast with light clouds. The image is partially obscured by a dark grey curved overlay on the right side.

# Upper Trinity Regional Water District

- Created in 1989
- Provides regional water & wastewater services for 29 communities
- Serves Denton & Collin Counties

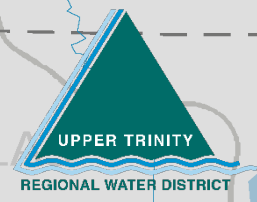
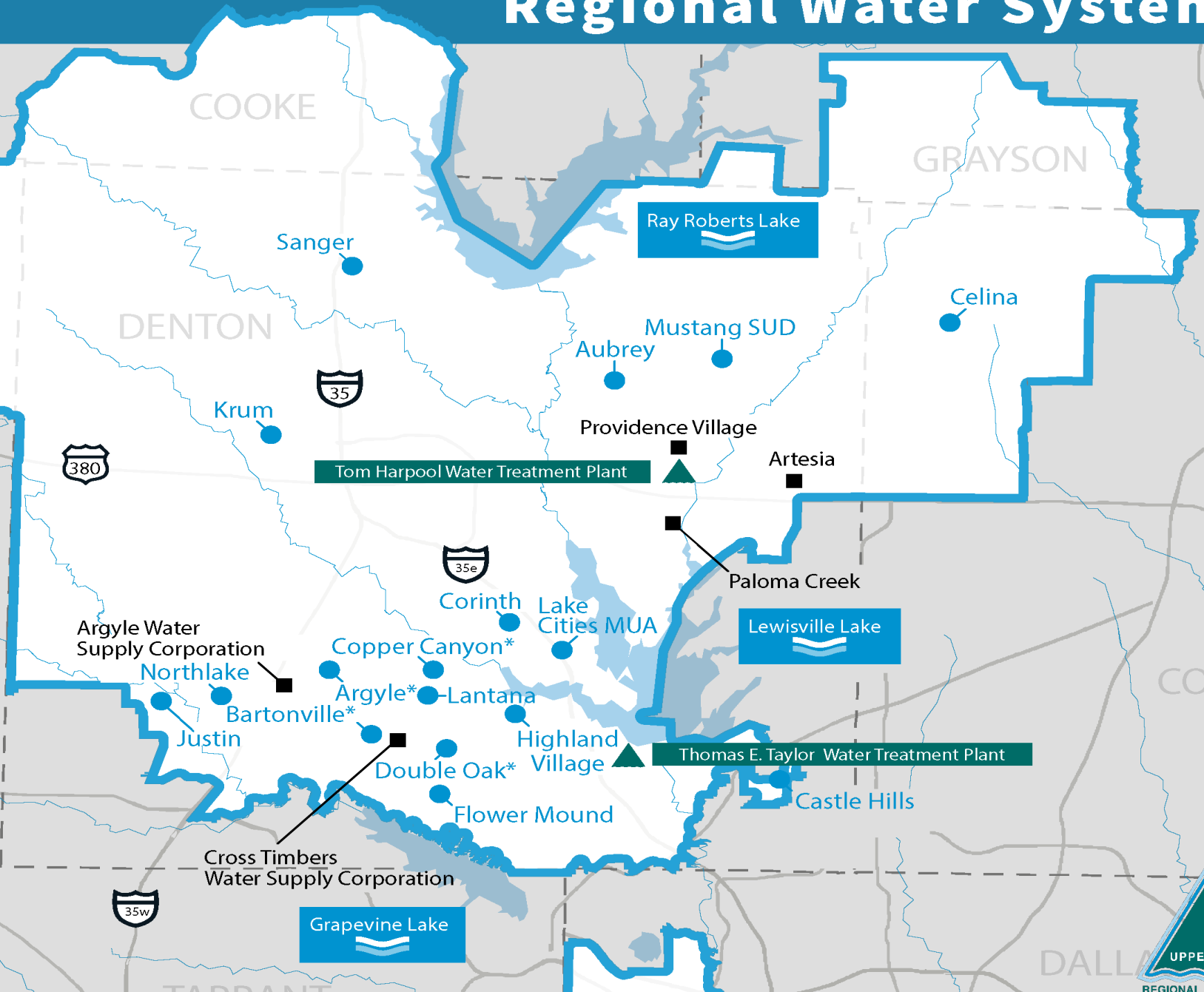


Upper Trinity Regional Water District

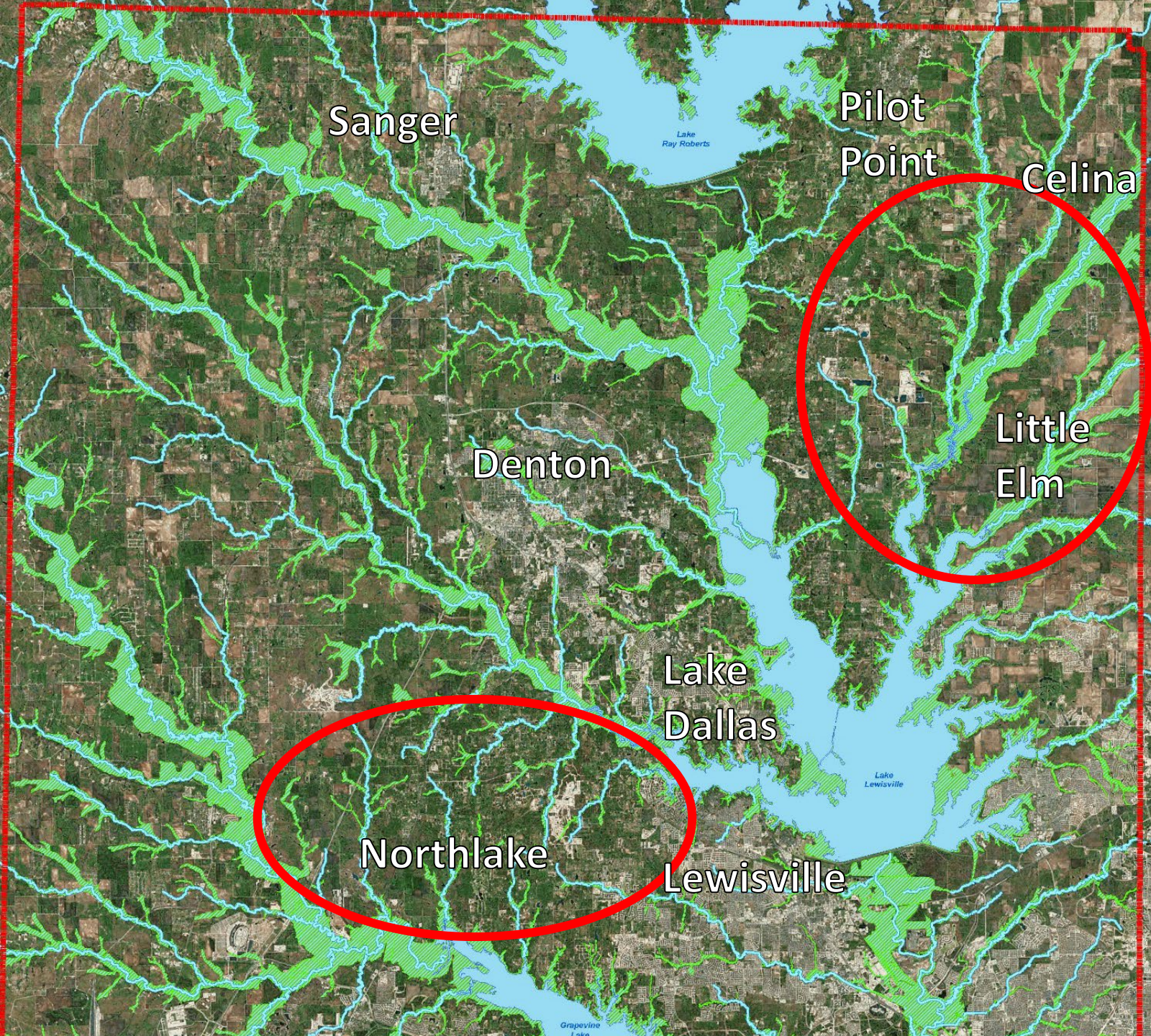
- ▲ Water Treatment Plant
- Members | \*Served indirectly
- Customer Cities/Utilities:

Lake water is drawn from:

- Lewisville Lake (by contract with cities of Dallas and Denton)
- Ray Roberts Lake (by contract with cities of Dallas and Denton)
- Jim Chapman (Cooper) Lake (by contract with City of Commerce)





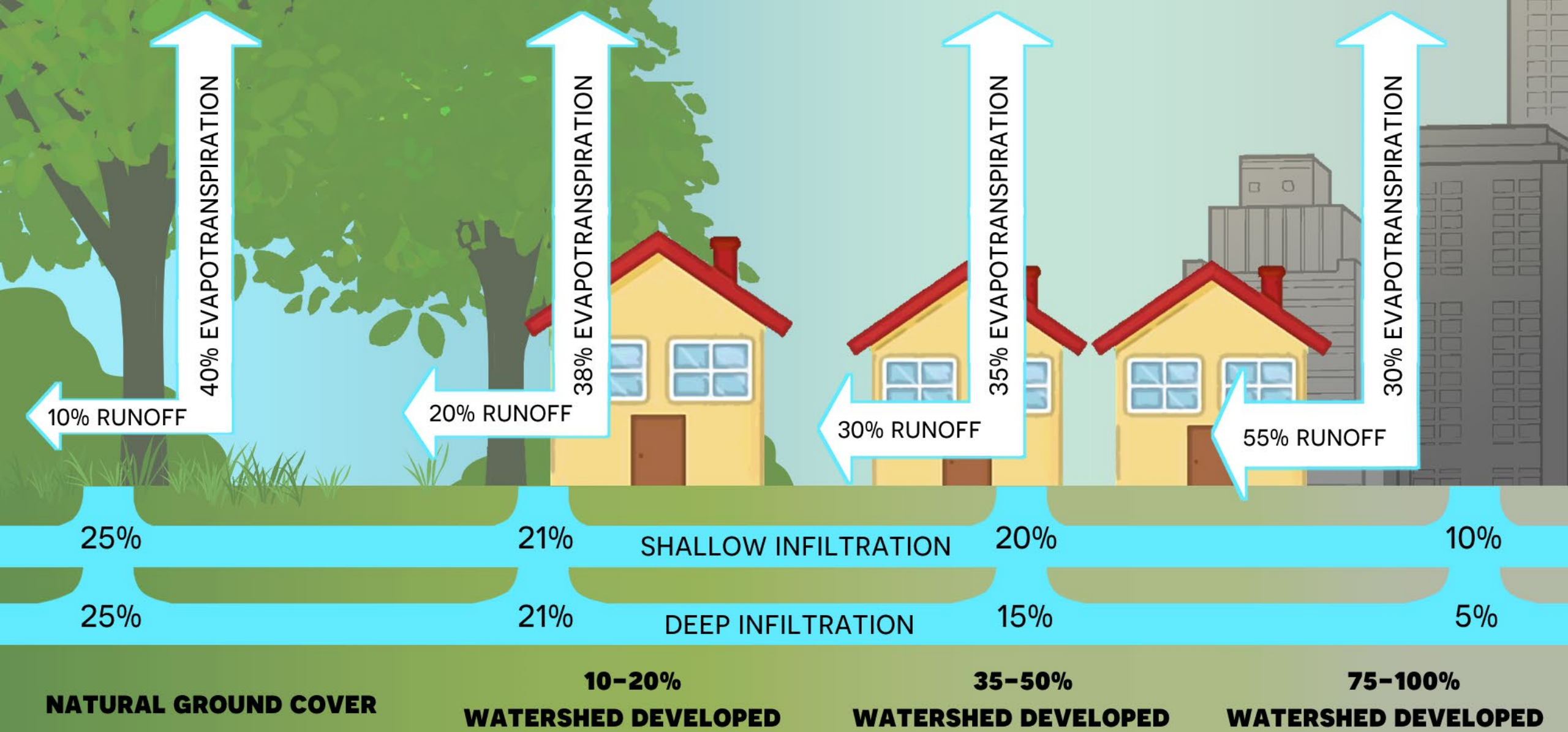


# Our Waterways

- Thousands of miles of streams and creeks
- Three major water supply reservoirs
- Hundreds of miles of hike/bike trails







# COMPARING WATER FLOW IN NATURAL AND URBAN AREAS

UTRWD.COM



# Why is Watershed Management Important?

- Protects Drinking Water Sources
- Protects Human Health / Aquatic Life
- Recreational / Economic Benefits





# Upper Trinity Conservation Trust

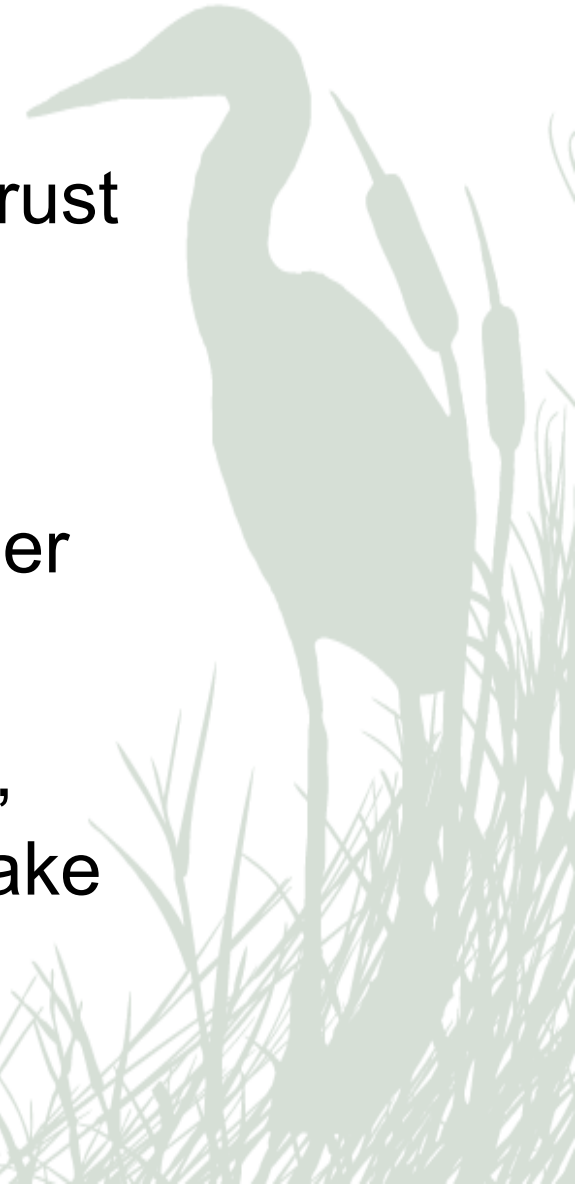
---



**PROUD  
MEMBER**



- Established in 2010
- 501 (C)(3) Non-Profit Land Trust
- Landowner Outreach and Education
- Preserve Greenbelts and other Key Watershed Features
- Focuses on Lakes Lewisville, Ray Roberts, Grapevine & Lake Ralph Hall



# Watershed Partners Program

*Increasing awareness & fostering partnerships to help protect our watersheds.*

## Founding Partners



## Sustaining Partners

Carollo Engineers  
City of Denton  
City of Corinth  
James Naylor  
Bryan Gelbke

## Contributing Partners

Oscar Burchard  
Lewisville ISD

## Supporting Partners

Town of Northlake  
Svatik Family

**Join the Partners Program & help lead a focused effort in watershed protection.**



# Education & Outreach

---



- Partner with other agencies and non-profits to provide educational workshops for landowners covering land stewardship practices.
- Training for city and county staff on stormwater management and stream restoration.



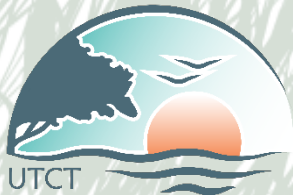
# What is a Conservation Easement?

---

- Voluntary agreement between landowner and land trust whereby the landowner restricts certain uses of the property to protect its natural, productive or cultural features.

## Important Points:

- Landowner retains ownership and enjoy it.
- Runs in perpetuity.



# Why a Conservation Easement?

---



- Preserve special features while continuing to own and enjoy the land.
- Protect water quality in the creeks, rivers and lakes.
- Preserve wildlife and aquatic habitat.
- Potential income tax benefits for owners.





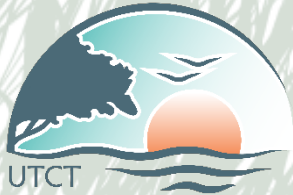
# Benefits of Greenbelts

---



Little Elm Creek, NE Denton County

- Serves as a buffer to protect water quality.
- Lessen flooding impacts.
- Preserve wildlife and aquatic habitat.





# Benefits of Greenbelts

---



Greenbelt within Lantana community

- Enhance the health and quality of life for residents.
- Provide nature-based recreation and education opportunities and experiences.



# Social Benefits of Greenbelts

---



Family enjoying trails along Grapevine Lake

- ✓ Recreation/Exercise → Lower Chronic Disease
- ✓ Connection to Nature → Greater Well-Being → Lower Stress & Anxiety → Improved Mental Health

## Better Physical, Mental and Emotional Health

“Healthy Trees, Healthy Lives” (*Texas A&M Forest Service*)





# Economic Benefits of Greenbelts

---



## Lewisville Lake in 2016:

- ✓ 2.7 million visits
  - ✓ \$65 million in visitor spending within 30 miles
  - ✓ Supports 601 jobs
- \*USACE Lewisville Lake 2020 Master Plan

***Water Treatment Costs?***  
***Flood Damage?***





# Benefits of Conserved Lands

---



- Every **\$1** invested in conservation yields up to **\$9** return on investment.
  - Water Quality
  - Water Quantity
  - Flood Protection
  - Agricultural Productivity

*\*Valuing Economic Benefits of Texas Conservation Lands (Texas Land Trust Council)*





# Benefits of Conserved Lands

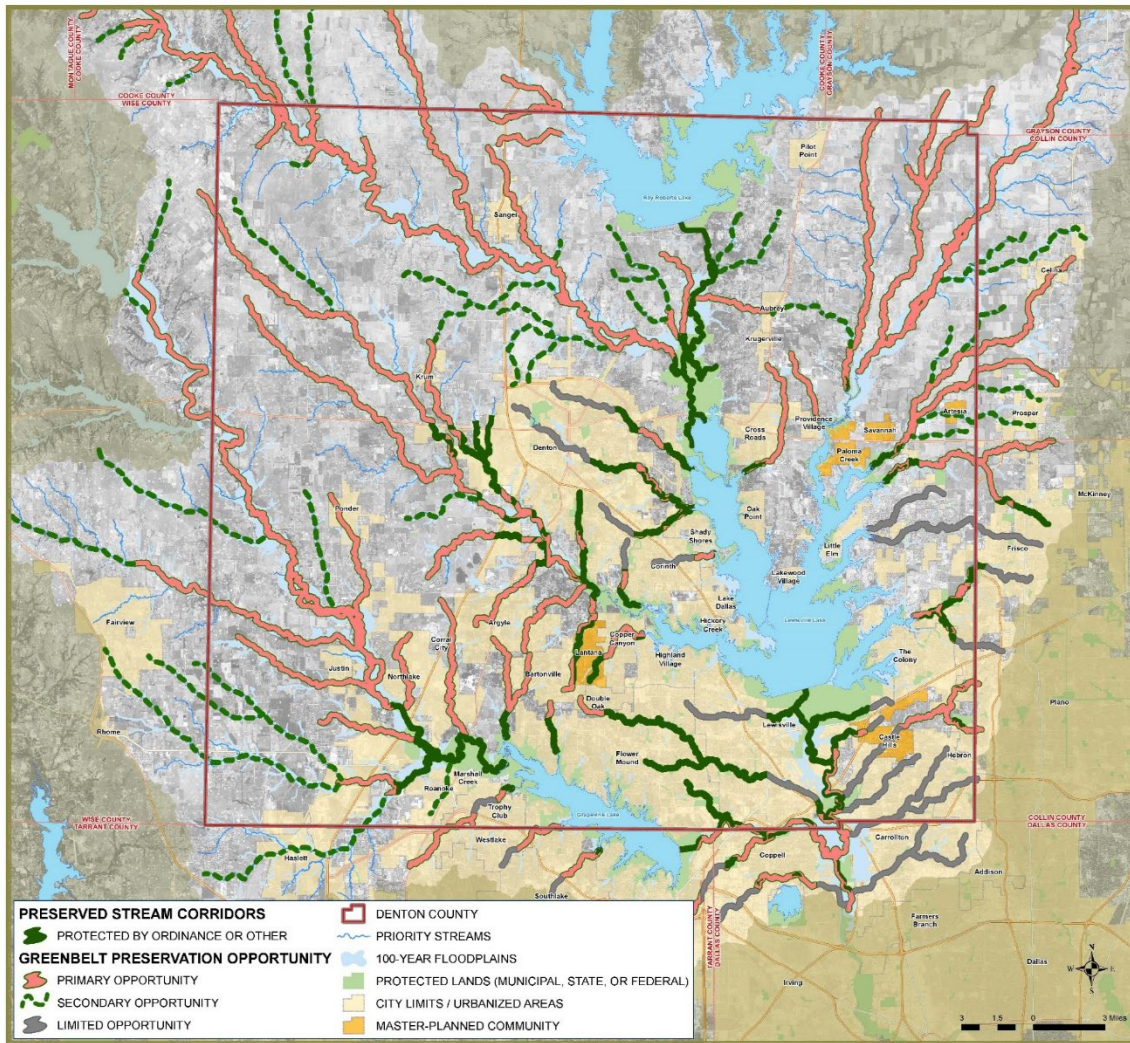
---



- Saves **\$69 million** per year in projected water treatment costs.
- Capture **\$316 million** in usable water.
- Every **\$1** spent on flood risk reduction can decrease disaster costs by **\$4**.



# Denton County Greenbelt Plan



- Adopted by Denton County, UTRWD & UTCT in 2017.
- Guides preservation of greenbelts and related natural areas.
- Identifies strategic areas.
- Advocates a common vision.
- Provides a toolbox of implementation strategies - - on a voluntary basis.



# Green Stormwater Infrastructure







UTCT





## Riparian Vegetation is Key

- Stabilizes streambank soil
- Dissipates floodwater energy
- Filters water

# Entities Adopting the Greenbelt Plan

---

*City of Aubrey*

*City of Corinth*

*City of Denton*

*Town of Double Oak*

*Town of Flower Mound*

*Town of Hickory Creek*

*City of Justin*

*Lake Cities MUA*

*Lantana*

*City of Lewisville*

*City of Pilot Point*

*City of Sanger*

*...interested?*



# Stay Connected!

---

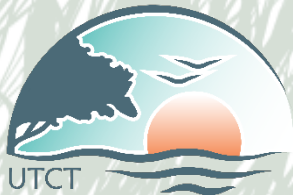


Upper Trinity  
Conservation Trust



@UTCTrust

[www.utct.org](http://www.utct.org)





# Questions and Comments

# Roundtable

Please share your current relevant water quality tasks or information and, if applicable, identify any areas of potential collaboration.



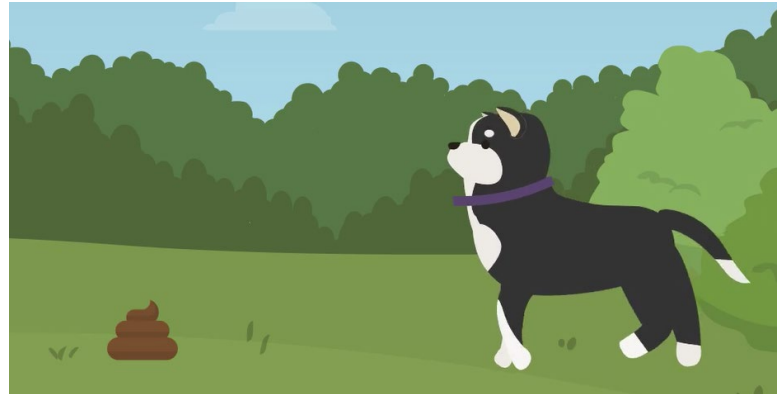
# NCTCOG Updates

1. NCTCOG's TMDL program
2. Piloting resources for Trash Free Waters project
3. Additional Tasks in NCTCOG's Water Quality Management Planning program

# Total Maximum Daily Load Program

Feedback requested by March 31, 2023, on two draft items below. Provide feedback to Hannah Allen, [hallen@nctcog.org](mailto:hallen@nctcog.org).

1. [Draft Doo the Right Thing \(pet waste\) Educational Explainer Video](#)



2. [Draft On-Site Sewage Facility \(OSSF\) Postcard](#)

**How's That Septic System Been Doing?**  
Your On-Site Sewage Facility (OSSF) can last nearly 30 years if you treat it right.

**When's the last time you pumped it?**  
It's recommended to pump your OSSF every three to five years to ensure proper treatment and draining and prevent system failures. You don't want to learn you're overdue during a midnight trip to the bathroom.

**Are you taking care to only flush the Three P's?**  
Pee, poop, toilet paper — that's all that should be going down your toilets. No more, no less. Hygiene products, wipes, floss, etc. all go in the trash.

**Are you being careful in the kitchen?**  
Avoid putting fat, oil, and grease (FOG) down the drain as these will solidify and clog your pipes. You should also take care to only put soft perishables through your garbage disposal as things like coffee grounds or eggshells cause clogs.

Your OSSF is a delicate ecosystem.

A diagram showing a cross-section of a septic tank and distribution box. The septic tank is a large red container with a smaller red distribution box on top. A pipe connects the two. The tank is shown with a layer of brown sludge at the bottom and a layer of white effluent on top. The distribution box has two outlets leading to two smaller red containers.

# Piloting Resources from NCTCOG's Trash Free Waters Project

- Currently working to purchase materials to facilitate pilot efforts:
  - [Recreational Litter Cleanup Toolkit](#)
  - [Trash Free Texas Restaurant Program Draft Toolkits](#) (under "Upcoming Events")



- Piloting entities receive materials FREE OF CHARGE!
- Sign-up [HERE](#) by Friday, March 17 at 5:00 p.m. to participate or notify Elena Berg today.

# Piloting Resources for NCTCOG's Trash Free Waters Project

## Recreational Litter Cleanup Toolkit

**Pladdling Drop-off**  
*Please place your collected litter in the bin.*



What is Pladdling?  
Scan To Learn More

**TRASH FREE TEXAS**

[www.trashfreetexas.org](http://www.trashfreetexas.org)

**Plogging Drop-off**  
*Please place your collected litter in the bin.*



What is Plogging?  
Scan To Learn More

**TRASH FREE TEXAS**

**FORT WORTH**

[www.trashfreetexas.org](http://www.trashfreetexas.org)



Let's **REDUCE** litter too...

## Trash Free Texas Restaurant Program

- Draft Toolkit for Restaurants
- Draft Toolkit for Communities
  
- Focus: To voluntarily reduce use of single-use plastics at restaurants (mainly straws and utensils)
  
- Role of communities: lead, inform, and/or engage residents and restaurants in effort.



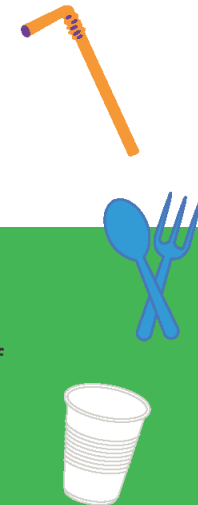
# Materials from Trash Free Texas Restaurant Program



# MORE Materials from Trash Free Texas Restaurant Program



## TAKE A PAUSE ON PLASTIC



[Restaurant Name or Logo]

is reducing our single-use plastic waste to keep litter out of our community.

You can help by skipping the straw, utensils or drink lids when you don't really need them.

If you need an item - don't worry, we have them available on request. Just make sure you properly dispose of the items.

Funding was provided by EPA. 





# EVEN More Materials from Trash Free Texas Restaurant Program!

**Help Us Keep  
Our Community  
Clean**

[Restaurant Name or Logo]

is reducing our single-use plastic waste to keep litter out of our community.

You can help by skipping the straw, utensils or drink lids when you don't need them.

If you need an item - don't worry, we have them available on request. Just make sure you properly dispose of the items.

 Funding was provided by EPA.





# Integrating New Tasks into NCTCOG's Water Quality Management Planning program

## ▶ Current Major Tasks

- ▶ Quarterly webinars on water topics
- ▶ Annually updating the North Central Texas Water Quality Management Plan (WQMP)

## ▶ New funding from Bipartisan Infrastructure Law

## ▶ New Major Tasks

- ▶ Improve the data collection and mapping for on-site sewage facilities in the WQMP
- ▶ Coordination with regional/state stakeholders on urban forestry
- ▶ Additional webinars/workshops focused on climate resilience and/or environmental justice

# Upcoming NCTCOG Meetings

Joint TMDL Stormwater and Wastewater  
Subcommittees Meeting (online) - March 21, 2023

[Add to Calendar](#)

Water Resources Council - April 12, 2023 (online)

[Add to Calendar](#)



# Connect with NCTCOG E & D Happenings!

Environment and Development Events Webpage:  
<https://www.nctcog.org/envir/events>

Subscribe to E & D Email Lists:  
<https://www.nctcog.org/envir/mail>

# NCTCOG Staff Contacts

## ▶ Elena Berg

- ▶ Environment and Development Planner III
- ▶ [Eberg@nctcog.org](mailto:Eberg@nctcog.org)
- ▶ 817-608-2363

## ▶ Cassidy Campbell

- ▶ Program Manager, Environment and Development
- ▶ [Ccampbell@nctcog.org](mailto:Ccampbell@nctcog.org)
- ▶ 817-608-2368

## ▶ Edith Marvin

- ▶ Director, Environment and Development
- ▶ [Emarvin@nctcog.org](mailto:Emarvin@nctcog.org)
- ▶ 817-695-9211





Thank you!

The background features abstract, overlapping geometric shapes in various shades of blue, ranging from light sky blue to deep navy blue. These shapes are primarily located on the right side of the frame, creating a modern, layered effect against the white background.