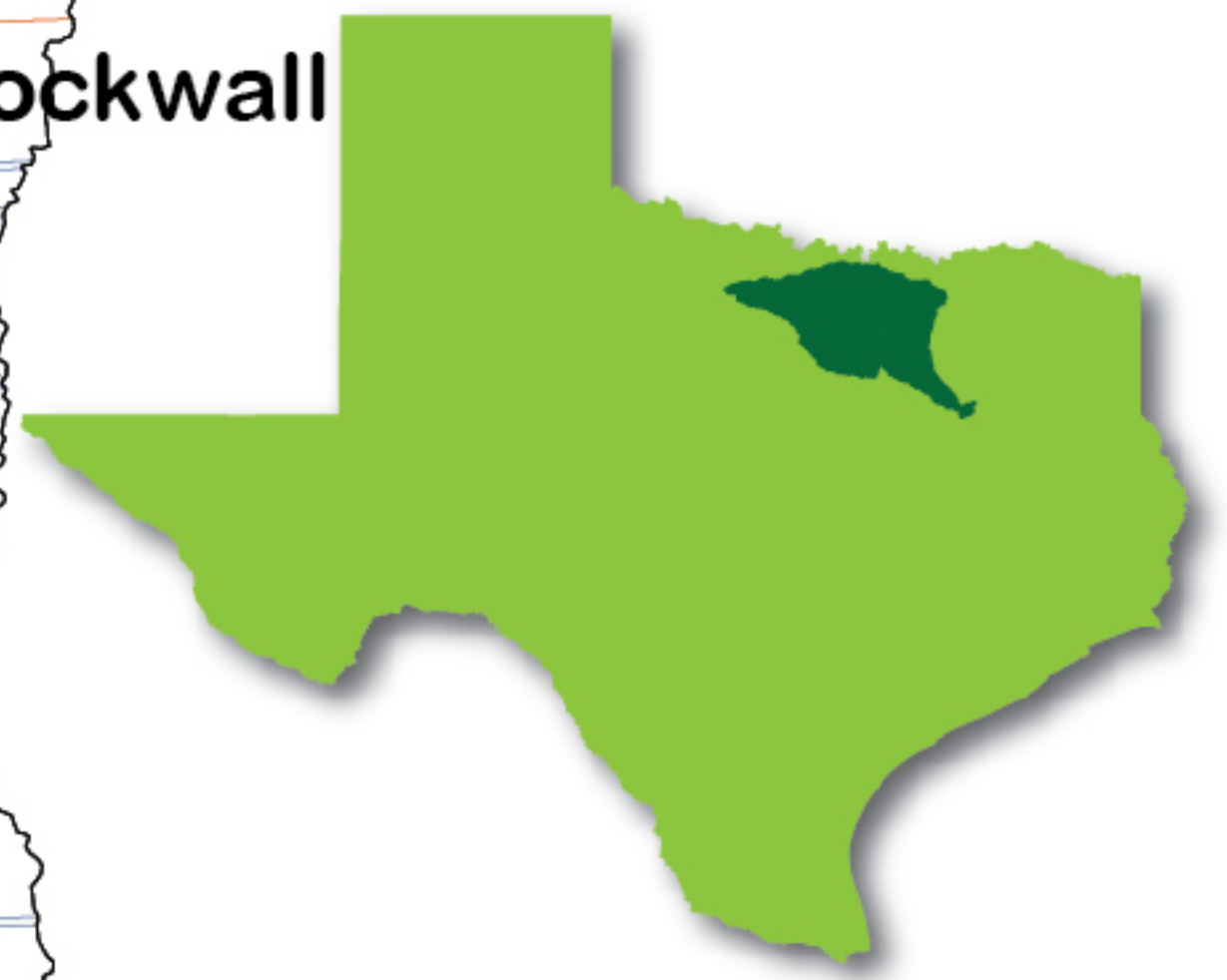
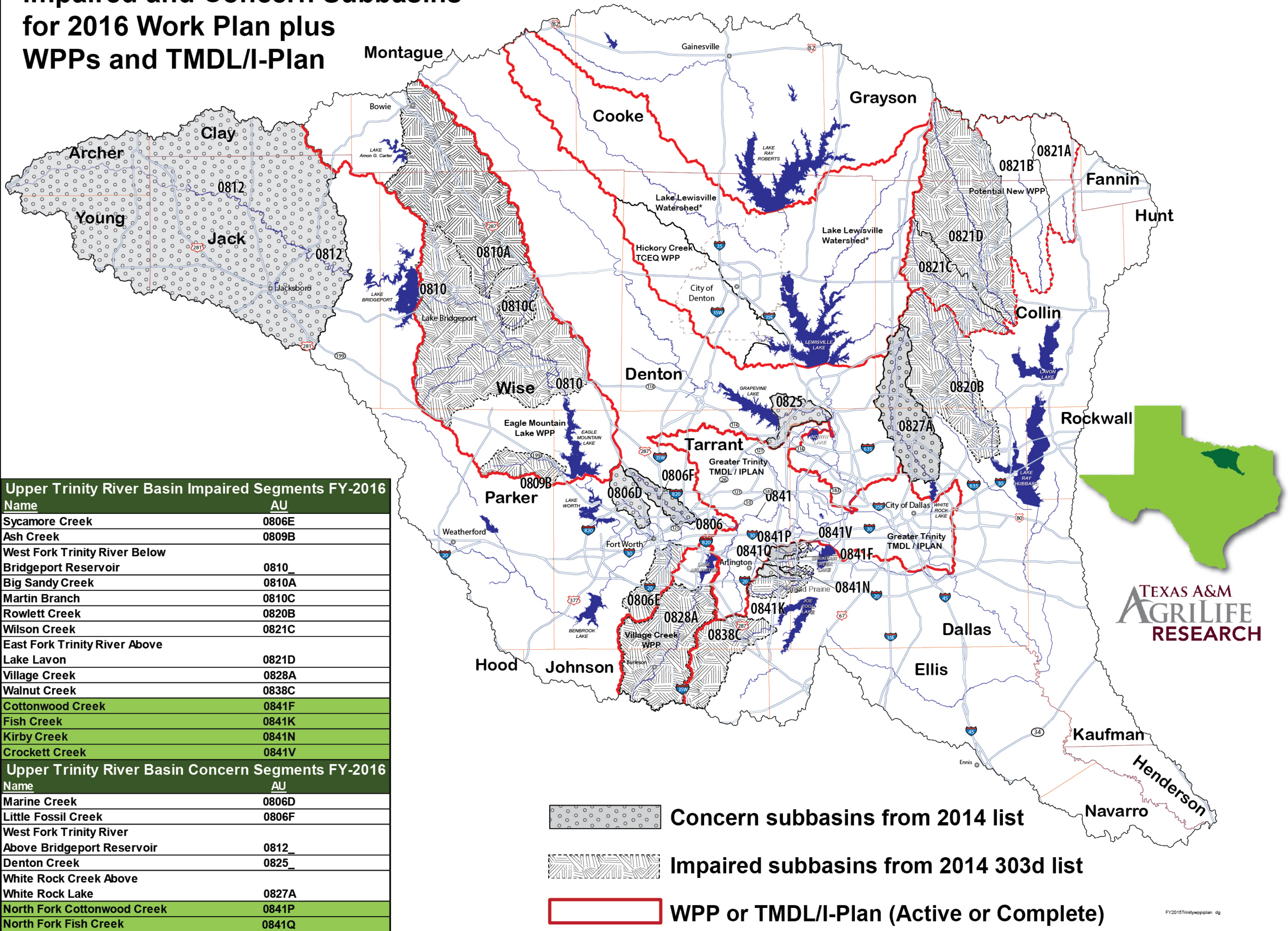


# Impaired and Concern Subbasins for 2016 Work Plan plus WPPs and TMDL/I-Plan



TEXAS A&M  
AGRILIFE  
RESEARCH

| Upper Trinity River Basin Impaired Segments FY-2016 |       |
|-----------------------------------------------------|-------|
| Name                                                | AU    |
| Sycamore Creek                                      | 0806E |
| Ash Creek                                           | 0809B |
| West Fork Trinity River Below Bridgeport Reservoir  | 0810_ |
| Big Sandy Creek                                     | 0810A |
| Martin Branch                                       | 0810C |
| Rowlett Creek                                       | 0820B |
| Wilson Creek                                        | 0821C |
| East Fork Trinity River Above Lake Lavon            | 0821D |
| Village Creek                                       | 0828A |
| Walnut Creek                                        | 0838C |
| Cottonwood Creek                                    | 0841F |
| Fish Creek                                          | 0841K |
| Kirby Creek                                         | 0841N |
| Crockett Creek                                      | 0841V |
| Upper Trinity River Basin Concern Segments FY-2016  |       |
| Name                                                | AU    |
| Marine Creek                                        | 0806D |
| Little Fossil Creek                                 | 0806F |
| West Fork Trinity River Above Bridgeport Reservoir  | 0812_ |
| Denton Creek                                        | 0825_ |
| White Rock Creek Above White Rock Lake              | 0827A |
| North Fork Cottonwood Creek                         | 0841P |
| North Fork Fish Creek                               | 0841Q |

- Concern subbasins from 2014 list
- Impaired subbasins from 2014 303d list
- WPP or TMDL/I-Plan (Active or Complete)

Assignment to the Greater Trinity TMDL/I-Plan likely